

Legend

Site Boundary

Distance from the Site Boundary

Fanellan 400kV Substation & Converter Station – Development Platform

Proposed Beaulay to Denny 400 kV Overhead Line Temporary Diversion Tower

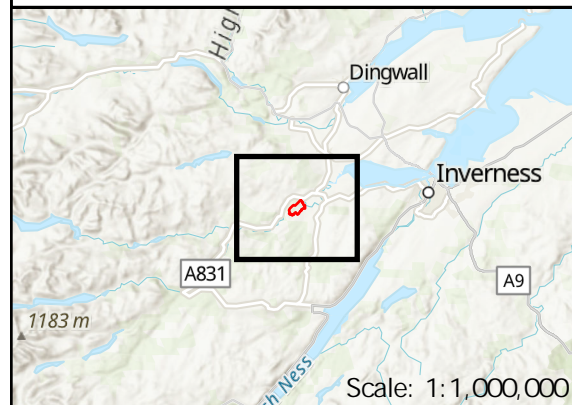
Zone of Theoretical Visibility

Upper Portion Visibility

Upper Portion and Lower Portion Visibility

Note:

- 1) The theoretical visibility of the upper portions show the taller aspects of the structures, which is the height above 15 m.
- 2) The ZTV for the Fanellan 400kV Substation & Converter Station with a height of 27.5 m occupying a development platform at 127 m AOD (marked in blue). The assumed viewer eye height is 2 m above ground level.
- 3) The ZTV for the Proposed Beaulay to Denny 400 kV Overhead Line Temporary Diversion Towers is calculated based on their maximum height (52.11 m - 53.11 m), with a viewer height of 2 m above ground level.
- 4) The theoretical visibility of the lower portions show a modified limited height of the structures, which is set at 15 m. The rest of the parameters remain.
- 5) The terrain model is 2 m LiDAR Digital Surface Model. The LiDAR models the ground surface where there are no upstanding objects but includes the top surface of objects such as trees and buildings.
- 6) Earth curvature and atmospheric refraction have been taken into account.



Reproduced by permission of Ordnance Survey. Crown copyright and database right 2023 all rights reserved. Ordnance Survey Licence number 0100022432. Digital Surface Model – © Bluesky International Limited. SSSEN Transmission take no responsibility for the release or accuracy of latest version Basemaps from Ordnance Survey	
Project No:	LT000459
Project:	Fanellan 400kV Substation and Converter Station
Title:	Figure 8.4b - Upper Portion ZTV: Fanellan 400kV Substation & Converter Station and Proposed Beaulay to Denny 400 kV Overhead Line Temporary Diversion
Drawn by:	MAL 26/02/25
Drawing:	70112533-WSP-DR-DA-024