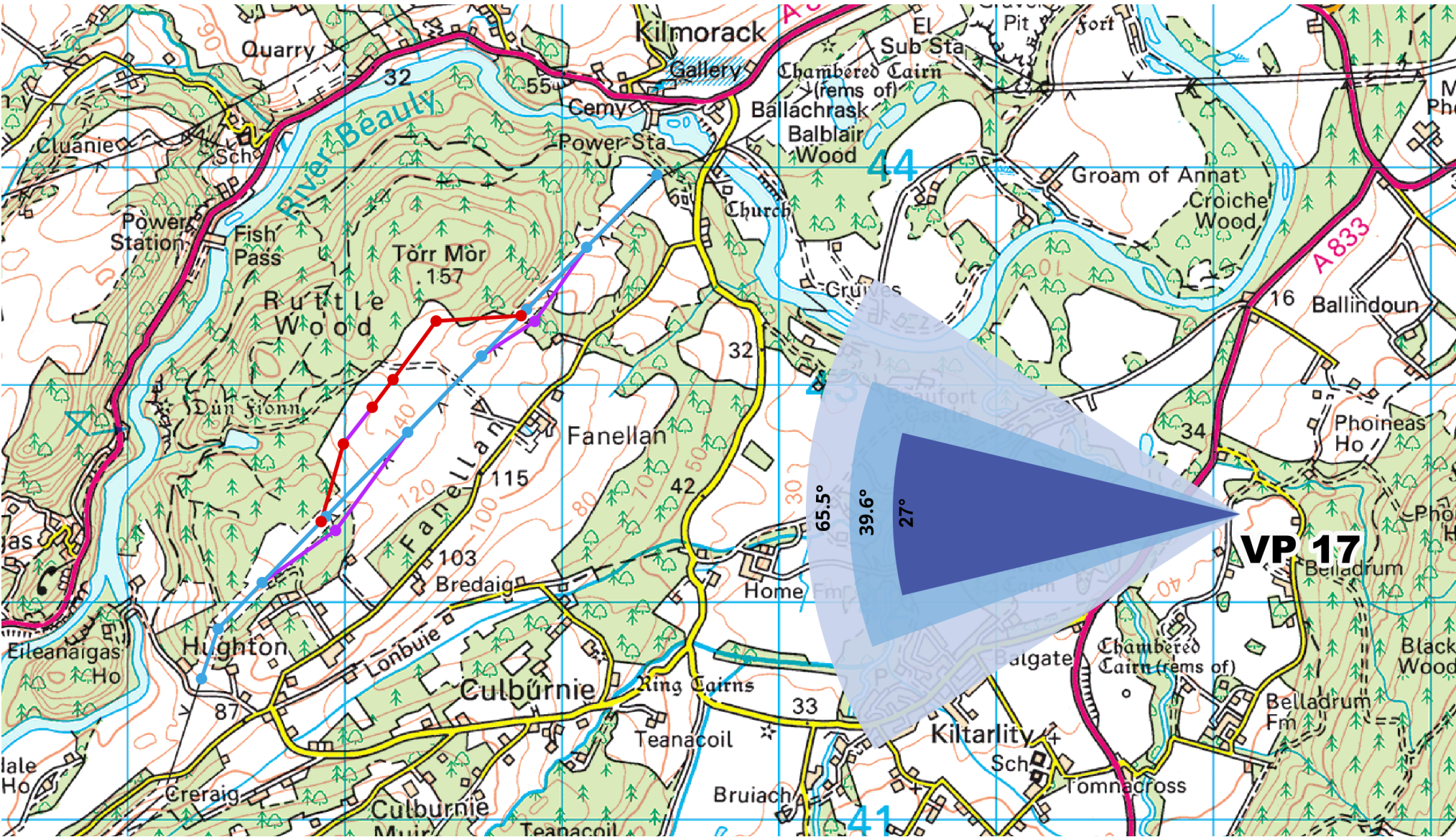


Mapped Location



Key:

- Existing Beaulieu to Denny 400 kV Overhead Line
- Proposed Beaulieu to Denny 400 kV Overhead Line Permanent Diversion and Tie ins
- Temporary Beaulieu to Denny 400 kV Overhead Line Diversion

Alignment information correct as of 22.12.2024

**Proposed Beaulieu to Denny 400 kV Overhead Line
Temporary Diversion and Permanent Tie-ins
Viewpoint Visualisations
Figure 5.21a
Viewpoint 17: View looking west from Belladrum Tartan Heart
Festival Grounds**

Location Description:
The viewpoint is on Belladrum Road, Kiltarlity.
There is parking available to the west of the
viewpoint in a large area. The viewpoint can be
accessed via foot over a field from the parking
area.

Camera Location



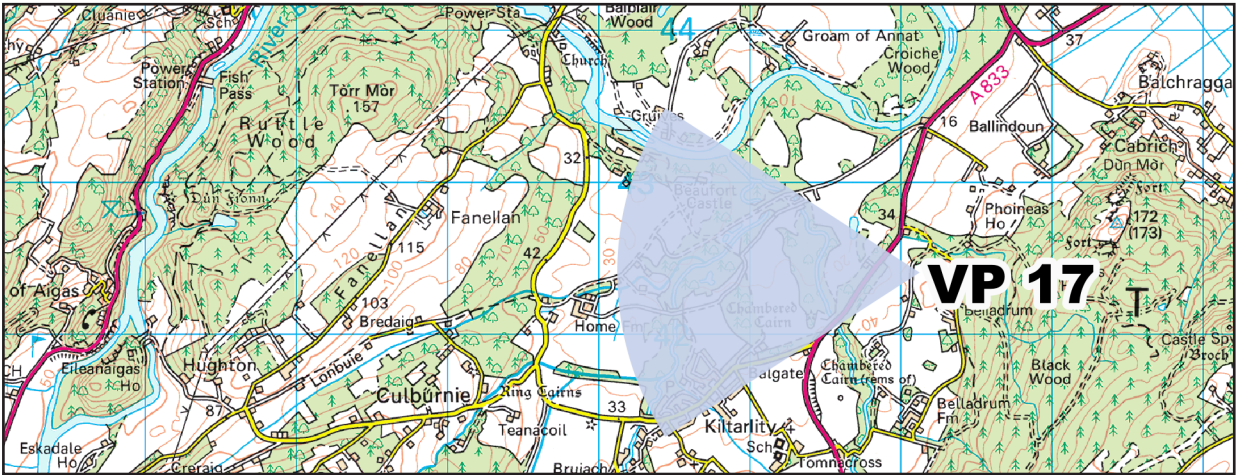
Location Data

OSGB36 Location:	252124 842405
AOD:	163m
Camera Height:	1.5m
Distance to Development:	3499m





Alignment information correct as of 22.12.2024



**Proposed Beauly to Denny 400 kV Overhead Line
Temporary Diversion and Permanent Tie-ins
Viewpoint Visualisations
Figure 5.21b
Viewpoint 17: View looking west from Belladrum Tartan
Heart Festival Grounds**

Viewpoint Location: X 252124, Y 842405 AOD: 163m
Distance to Development and Direction of view: 3499m, 270°
(North-West)

*Receptors represented: Recreational receptors visiting Belladrum Tartan Heart
Festival Grounds.*

*This visualisation has been identified and created for use with the visual impact
assessment, but can also be used to inform landscape impacts on LCT229
Enclosed Farmland.*

*The image should be viewed at a comfortable arm's length (approximately
500mm) and viewed normally with both eyes. The printed image is representative
of the Proposed Development, but is not representative of scale or distance.*

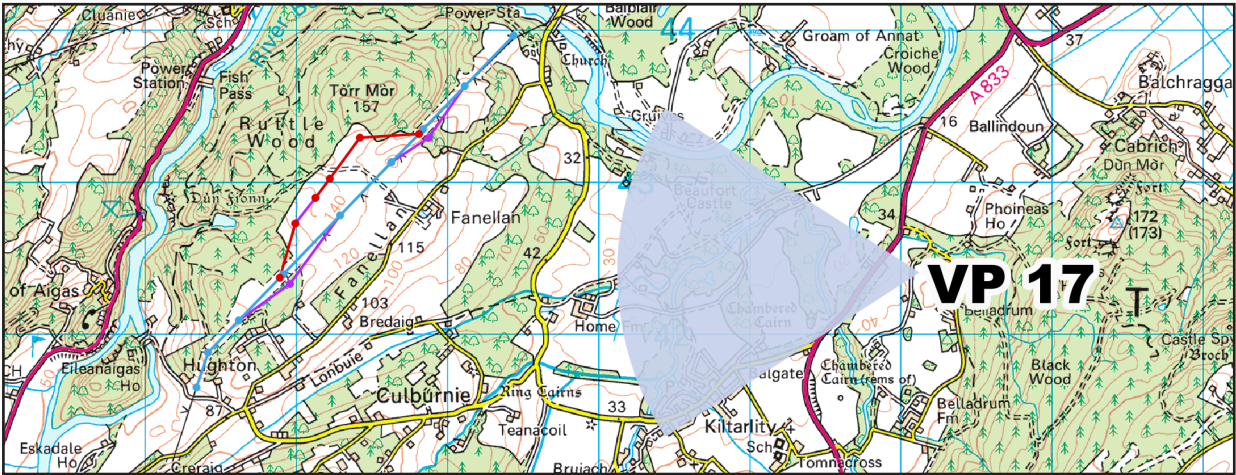
Camera: Sony ILCE-7M4
Lens: 50mm
Height of camera above the ground: 1.5m
Date: 22/10/2024



Operational View (Baseline) - 65.5°



Alignment information correct as of 22.12.2024



Receptors represented: Recreational receptors visiting Belladrum Tartan Heart Festival Grounds.

This visualisation has been identified and created for use with the visual impact assessment, but can also be used to inform landscape impacts on LCT229 Enclosed Farmland.

The image should be viewed at a comfortable arm's length (approximately 500mm) and viewed normally with both eyes. The printed image is representative of the Proposed Development, but is not representative of scale or distance.

Key:

- Existing Beaulieu to Denny 400 kV Overhead Line
- Proposed Beaulieu to Denny 400 kV Overhead Line Permanent Diversion and Tie ins
- Temporary Beaulieu to Denny 400 kV Overhead Line Diversion

**Proposed Beaulieu to Denny 400 kV Overhead Line
Temporary Diversion and Permanent Tie-ins
Viewpoint Visualisations
Figure 5.21c**

**Viewpoint 17: View looking west from Belladrum Tartan
Heart Festival Grounds
Construction View (Photowire: Proposed Beaulieu to Denny 400 kV Overhead
Line Temporary Diversion and Permanent Tie-ins and Fanellan 400kV
Substation & Converter Station SSEN Proposed Site) - 65.5°**

Viewpoint Location: X 252124, Y 842405 AOD: 163m
Distance to Development and Direction of view: 3499m, 270°
(North-West)

Camera: Sony ILCE-7M4
Lens: 50mm
Height of camera above the ground: 1.5m
Date: 22/10/2024





Proposed Beaulay to Denny 400 kV Overhead Line Temporary Diversion and Permanent Tie-ins
Figure 5.21-d Viewpoint 17: View looking west from Belladrum Tartan Heart Festival Grounds

Construction View (Photowire: Proposed Beaulay to Denny 400 kV Overhead Line Temporary Diversion and Permanent Tie-ins and Fanellan 400kV Substation & Converter Station SSN Proposed Site) - 50mm

Viewpoint Location: X 252124, Y 842405 AOD: 163m
 Distance to Development and Direction of view: 3499m, 270°
 Date: 22/10/2024

*The image should be viewed at a comfortable arm's length (approximately 500mm) and viewed normally with both eyes.
 The printed image is representative of the Proposed Development, but is not representative of scale or distance.*

Camera: Sony ILCE-7M4
 Lens: 50mm
 Height of camera above the ground: 1.5m



TRANSMISSION



Proposed Beauty to Denny 400 kV Overhead Line Temporary Diversion and Permanent Tie-ins
Figure 5.21-a Viewpoint 17: View looking west from Belladrum Tartan Heart Festival Grounds
 Construction View (Photowire: Proposed Beauty to Denny 400 kV Overhead Line Temporary Diversion and Permanent Tie-ins and Fanellan 400kV Substation & Converter Station SSEN Proposed Site) - 75mm

Viewpoint Location: X 252124, Y 842405 AOD: 163m
 Distance to Development and Direction of view: 3499m, 270°
 Date: 22/10/2024

*The image should be viewed at a comfortable arm's length (approximately 500mm) and viewed normally with both eyes.
 The printed image is representative of the Proposed Development, but is not representative of scale or distance.*

Camera: Sony ILCE-7M4
 Lens: 50mm
 Height of camera above the ground: 1.5m



TRANSMISSION