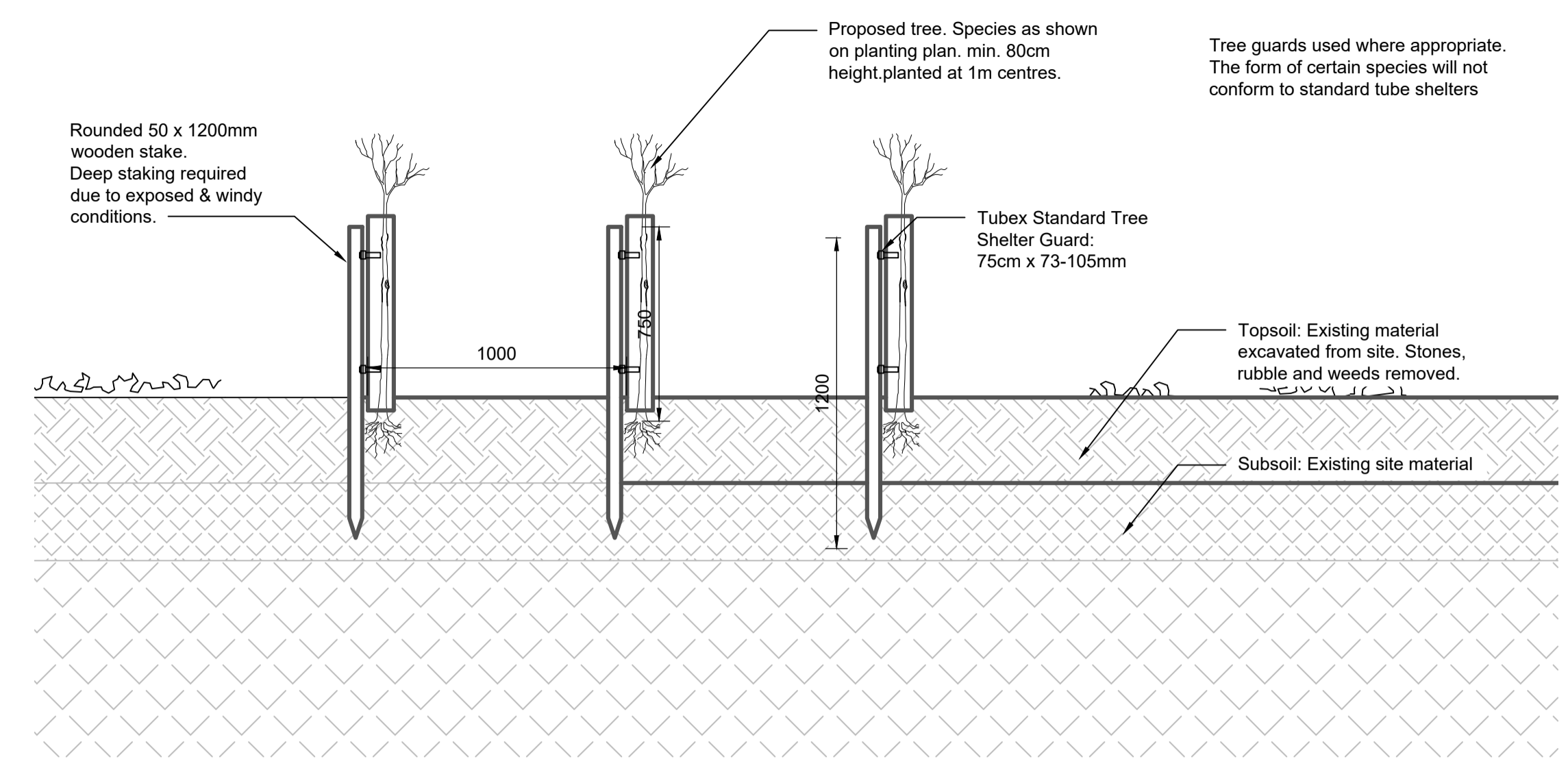
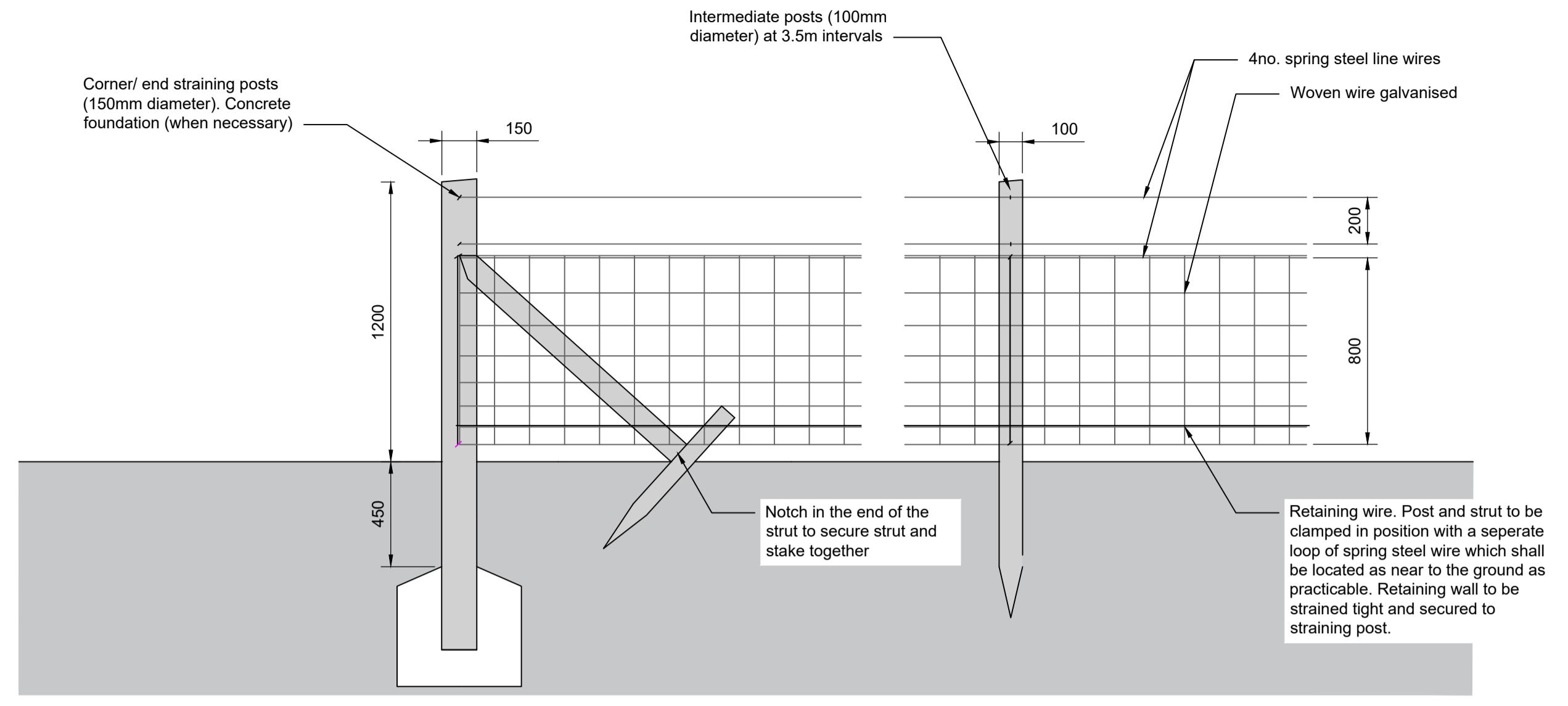


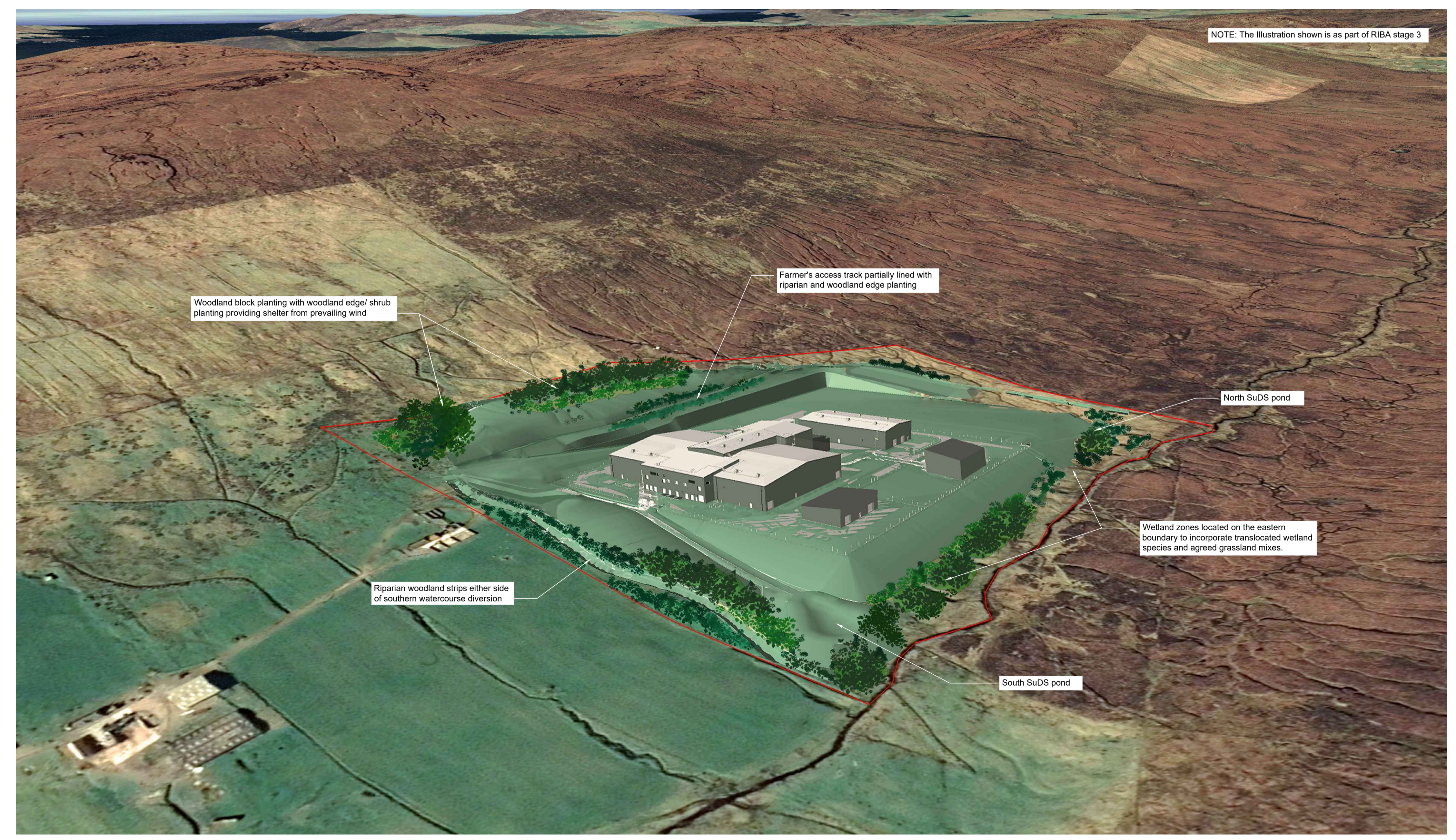
1 Detail: Woodland tree shelter guard and staking
1:20 @A1



2 Detail: Stock-proof post and wire fence
1:20 @A1



3 Landscape Visualisation
North West View across development



Notes

- All dimensions are in metres unless stated otherwise.
- Do not scale from this drawing, if in doubt ask.
- This drawing is to be read in conjunction with the reference drawings, engineering proposals and together with the specification and pre-construction information.
- Planting shall take place during favourable weather and soil conditions during the planting season between October to March with bare-rooted conifers or evergreens being planted during the months of November or March.

Key to symbols

- Refer to drawing

Reference drawings

0005_KERG_LAY_0813_1600_01 - Landscape Proposals (Sheet 1 of 2)
0005_KERG_LAY_0813_1600_02 - Landscape Proposals (Sheet 2 of 2)
0005_KERG_DET_0813_1601_01 - Landscape Details & Visualisation
LT09-KERG-0005-00-XX-RP-L-0922_01 - Landscape Maintenance Report

Rev	Date	Drawn	Description	Ch'k'd	App'd
04	11/03/20	AA	FOR PLANNING SUBMISSION	RP	CM
03	21/02/20	AA	C2 BUILDING UPDATE	RP	JC
02	20/02/20	AA	ISSUE FOR COMMENT	RP	CM
01	29/01/20	AA	DRAFT ISSUE	RP	CM

Status Stamp

FOR COMMENT

MOTT MACDONALD

St Vincent Plaza
319 St Vincent Street
Glasgow, G2 5LD
United Kingdom

T +44 (0)141 222 4500
F -
W www.mottmac.com

Client

Scottish & Southern
Electricity Networks

Title

**SHETLAND HVDC LINK PROJECT
KERGORD
Landscape Detailing & Visualisation**

Sheet 01 of 01

Designed	R. Playford	RP	Eng check	R. Playford	RP
Drawn	A. Abbey	AA	Coordination	C McMillan	CM
Dwg check	R. Playford	RP	Approved	J Craig	JC
MMD Project Number	404396	Scale at A1	As shown	Security	STD
Suitability Description	Suitable for Review & Comment			Suit. Code	S3
SSE Drawing Number	0005_KERG_DET_0813_1601_01	Drawing Number	LT09-KERG-0005-00-XX-DR-L-1601_01	Revision	04