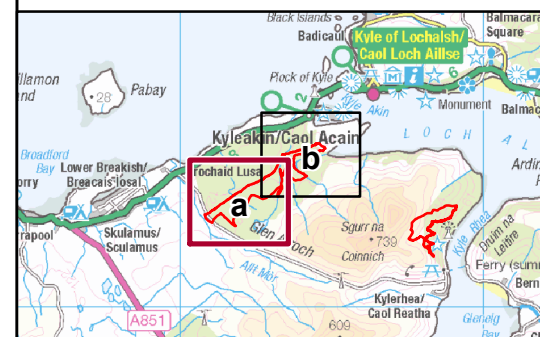


Key

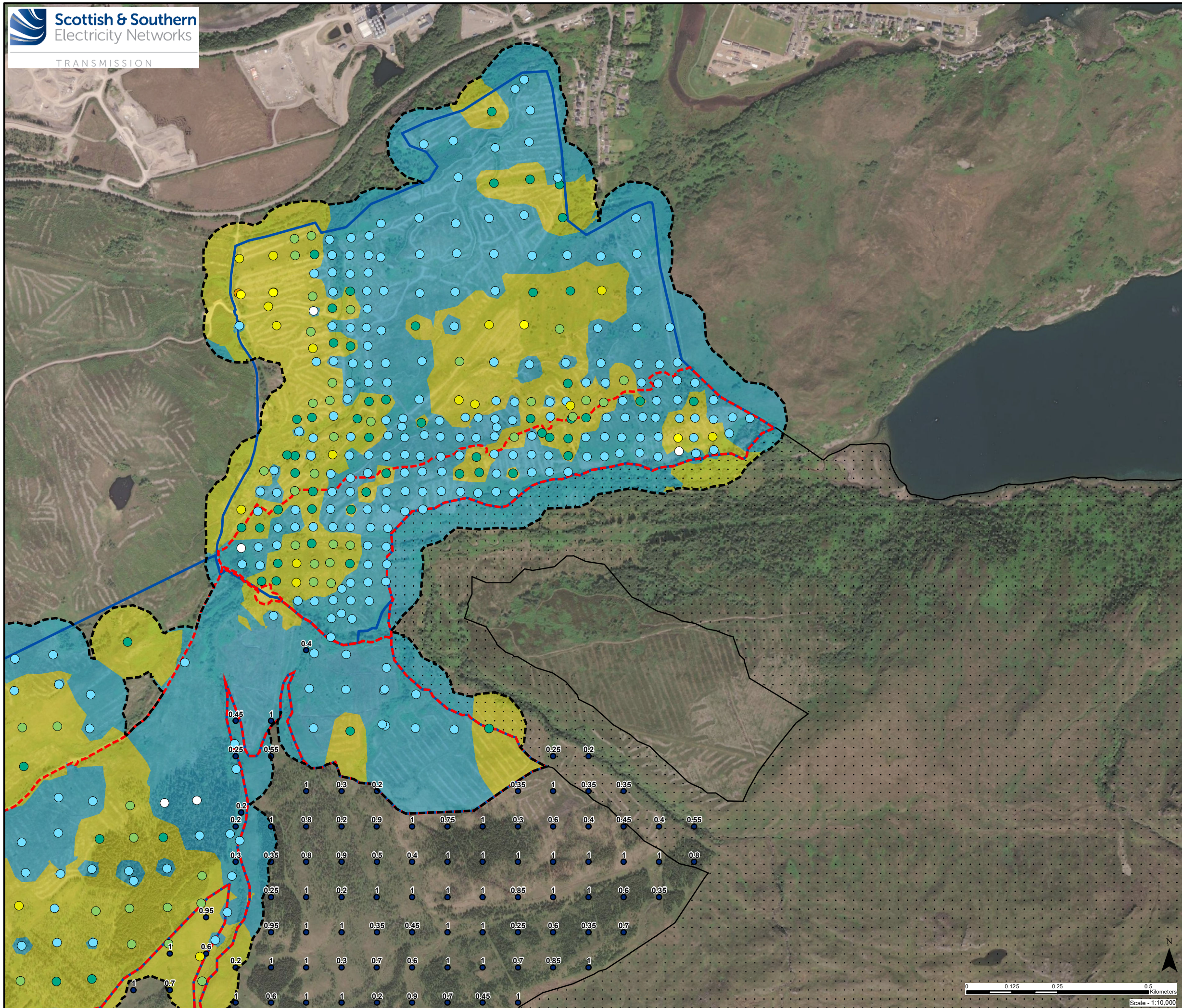
- Compensation Area
- Compensation Search Area
- Peat Analysis Boundary (PAB)
- Source: NatureScot**
- Special Area of Conservation (SAC)
- Peat Depth Sample Location**
- No Peat
- ≤0.50m
- 0.51 - 1.00m
- 1.01 - 2.00m
- 2.01 - 3.00m
- 3.01 - 4.00m
- 5.01 - 5.30m
- Forestry and Land Scotland (FLS) Location (Labelled with Depth in Metres - capped at 1m)
- Interpolated Peat Depths**
- 0 - 50cm
- > 50 cm

The interpolation model results were generated using the Inverse Distance Weighted (IDW) modelling technique



Reproduced by permission of Ordnance Survey on behalf of HMSO.
 Crown copyright and database right 2023 all rights reserved.
 Source: Esri, Maxar, Earthstar Geographics, and the GIS User Community;
 Contains NatureScot information licensed under the Open Government Licence v3.0.

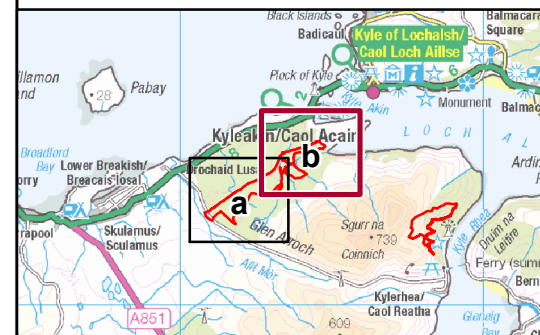
Project No: LT91	
Project:	Skye Reinforcement Project Compensation Plan
Title:	Compensation Areas A & C: Peat Depths
Drawn by:	LM
	21/06/2023
Drawing:	Figure 2a



Key

- Compensation Area
- Compensation Search Area
- Peat Analysis Boundary (PAB)
- Source: NatureScot**
- Special Area of Conservation (SAC)
- Peat Depth Sample Location**
- No Peat
- ≤0.50m
- 0.51 - 1.00m
- 1.01 - 2.00m
- 2.01 - 3.00m
- 3.01 - 4.00m
- 4.01 - 5.00m
- Forestry and Land Scotland (FLS) Location (Labelled with Depth in Metres - capped at 1m)
- Interpolated Peat Depths**
- 0 - 50cm
- > 50 cm

The interpolation model results were generated using the Inverse Distance Weighted (IDW) modelling technique



Reproduced by permission of Ordnance Survey on behalf of HMSO.
 Crown copyright and database right 2023 all rights reserved.
 Source: Esri, Maxar, Earthstar Geographics, and the GIS User Community;
 Contains NatureScot information licensed under the Open Government Licence v3.0.

Project No: LT91	
Project:	Skye Reinforcement Project Compensation Plan
Title:	Compensation Areas A & C: Peat Depths
Drawn by: LM	21/06/2023
Drawing:	Figure 2b

