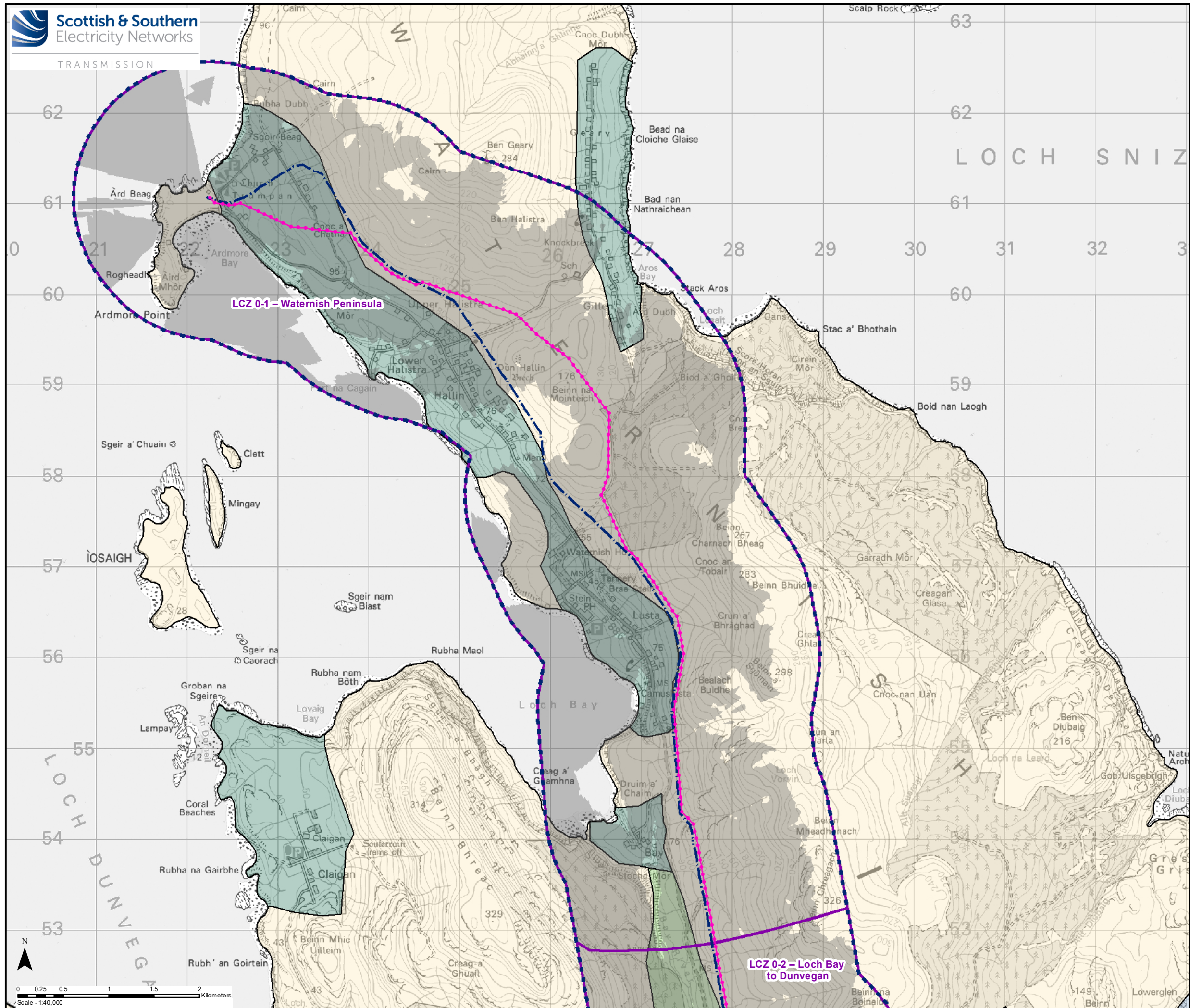


TRANSMISSION



**Key**

- 1.5km Study Area
- Proposed OHL Alignment
- Proposed Wood Pole (H Pole)
- Existing 132 kV OHL to be dismantled (Wood Pole)
- Zone of Theoretical Visibility (ZTV)

**Landscape Assessment**

- Local Character Zones (LCZ)

**Landscape Character Types (LCT)**

- LCT 357. Farmed and Settled Lowlands - Skye & Lochalsh
- LCT 358. Low Smooth Moorland
- LCT 359. Upland Sloping Moorland
- LCT 360. Stepped Moorland
- LCT 361. Stepped Hills

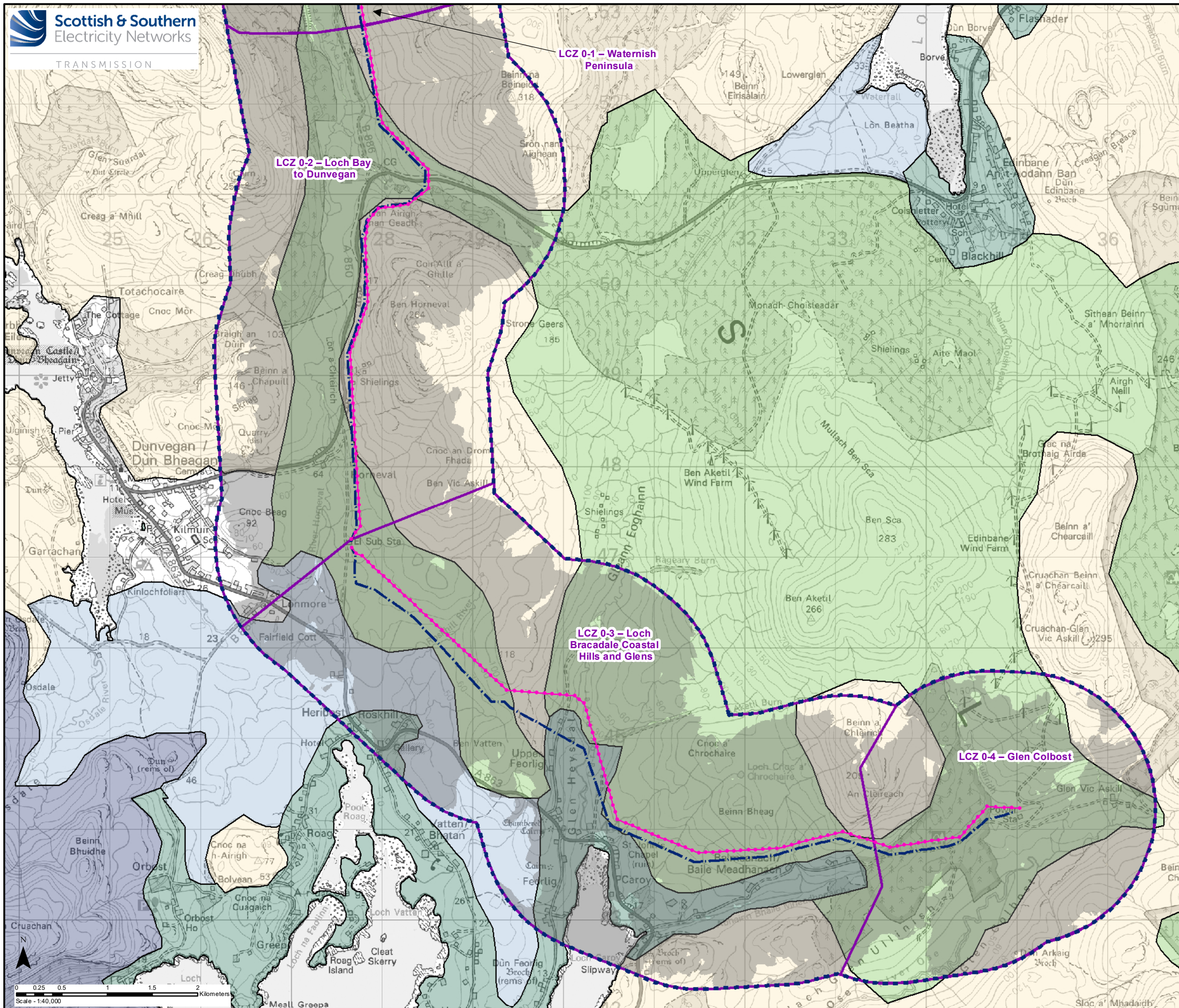
Reproduced by permission of Ordnance Survey on behalf of HMSO.  
Crown copyright and database right 2022 all rights reserved.  
Ordnance Survey Licence number EL273236.

Project No: LT91  
Project: Skye Reinforcement Project  
EIA Report

Title: Figure V2-3.3-S0a  
Section 0 Landscape Character

Drawn by: BL/LV 26/08/2022

Drawing: 119026-D-EIA-V2-3.3-S0a-1.0.0



**Key**

- 1.5km Study Area
- Proposed OHL Alignment
- Proposed Wood Pole (H Pole)
- Existing 132 kV OHL to be dismantled (Wood Pole)
- Zone of Theoretical Visibility (ZTV)

Landscape Assessment

- Local Character Zones (LCZ)

Landscape Character Types (LCT)

- LCT 357. Farmed and Settled Lowlands - Skye & Lochalsh
- LCT 358. Low Smooth Moorland
- LCT 359. Upland Sloping Moorland
- LCT 360. Stepped Moorland
- LCT 361. Stepped Hills

Reproduced by permission of Ordnance Survey on behalf of HMSO.  
Crown copyright and database right 2022 all rights reserved.  
Ordnance Survey Licence number EL273236.

Project No: LT91  
Project: Skye Reinforcement Project  
EIA Report

Title: Figure V2-3.3-S0b  
Section 0 Landscape Character

Drawn by: BL/LV 26/08/2022

Drawing: 119026-D-EIA-V2-3.3-S0b-1.0.0