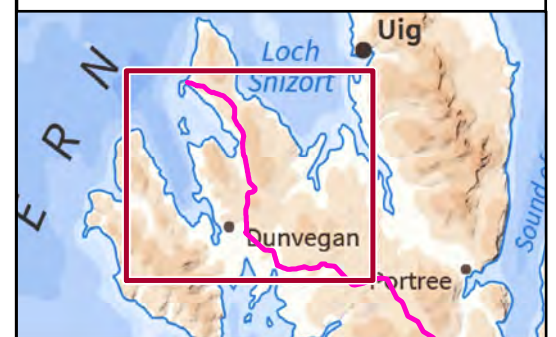


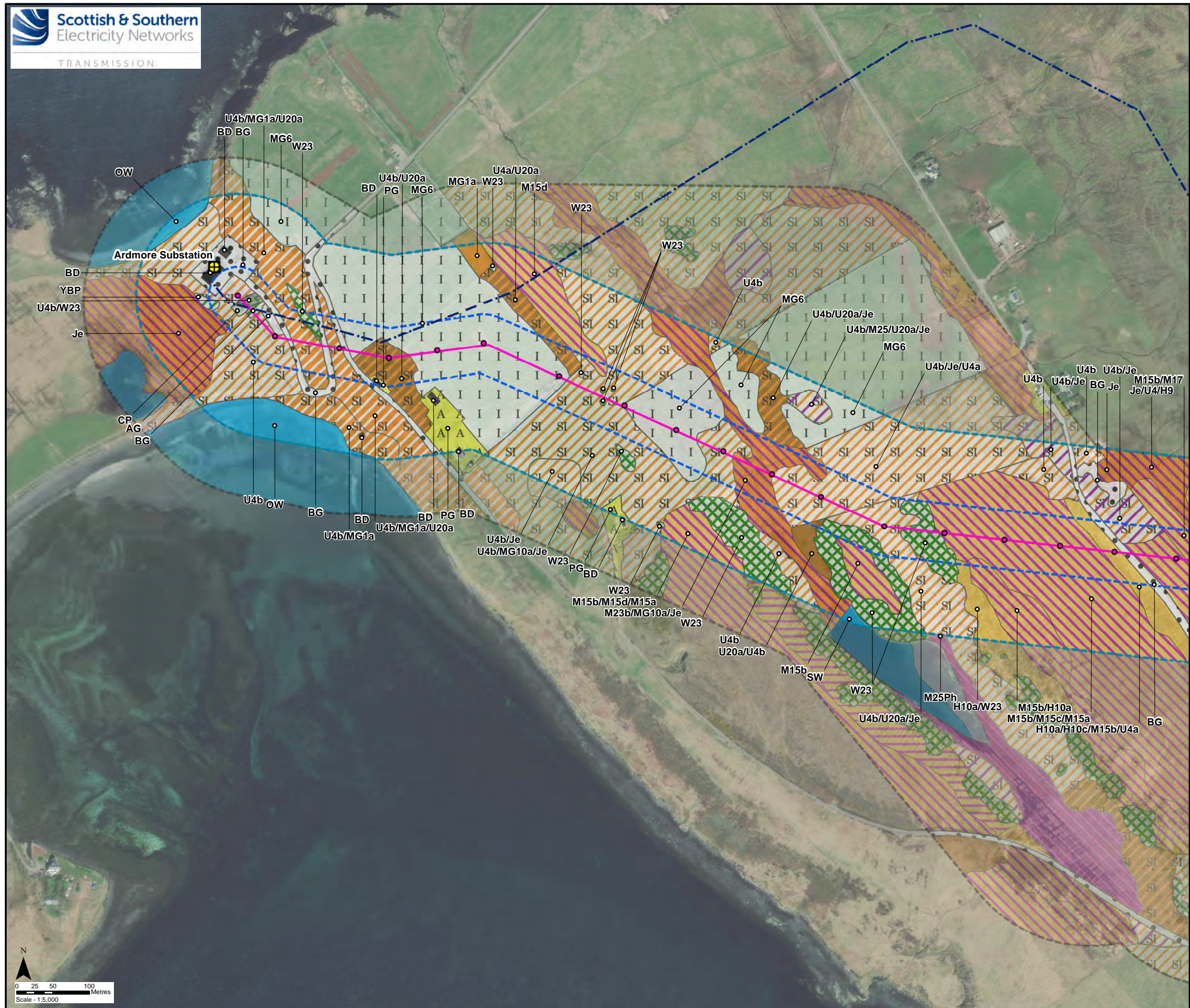
Key

- Proposed OHL Alignment
- Study Area - NVC Habitat
- Section 0 Tile Extent



Reproduced by permission of Ordnance Survey on behalf of HMSO.
Crown copyright and database right 2022 all rights reserved.
Contains OS data © Crown Copyright and database right 2020
Contains OS data © Crown Copyright and database right 2019

Project No:	LT91
Project:	Skye Reinforcement Project EIA Report
Title:	Figure V2-4.3 (0.00): National Vegetation Classification (NVC) Survey Area and Results
Drawn by:	LM 25/08/2022
Drawing:	EIA_V2-4.3_NVC_Sec0_Tile0_SKYE

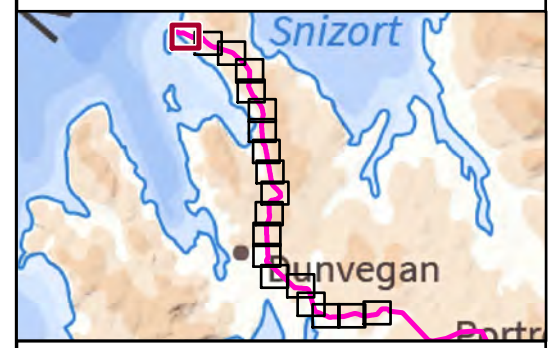


Key

- Proposed Wood Pole (H Pole)
- Proposed OHL Alignment
- - - Existing 132 kV OHL to be dismantled (Wood Pole)
- + Existing Substation
- Limit of Deviation
- Survey Area
- Study Area - NVC Habitat

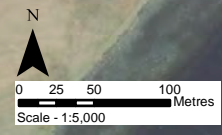
Phase 1 Habitat (Code)

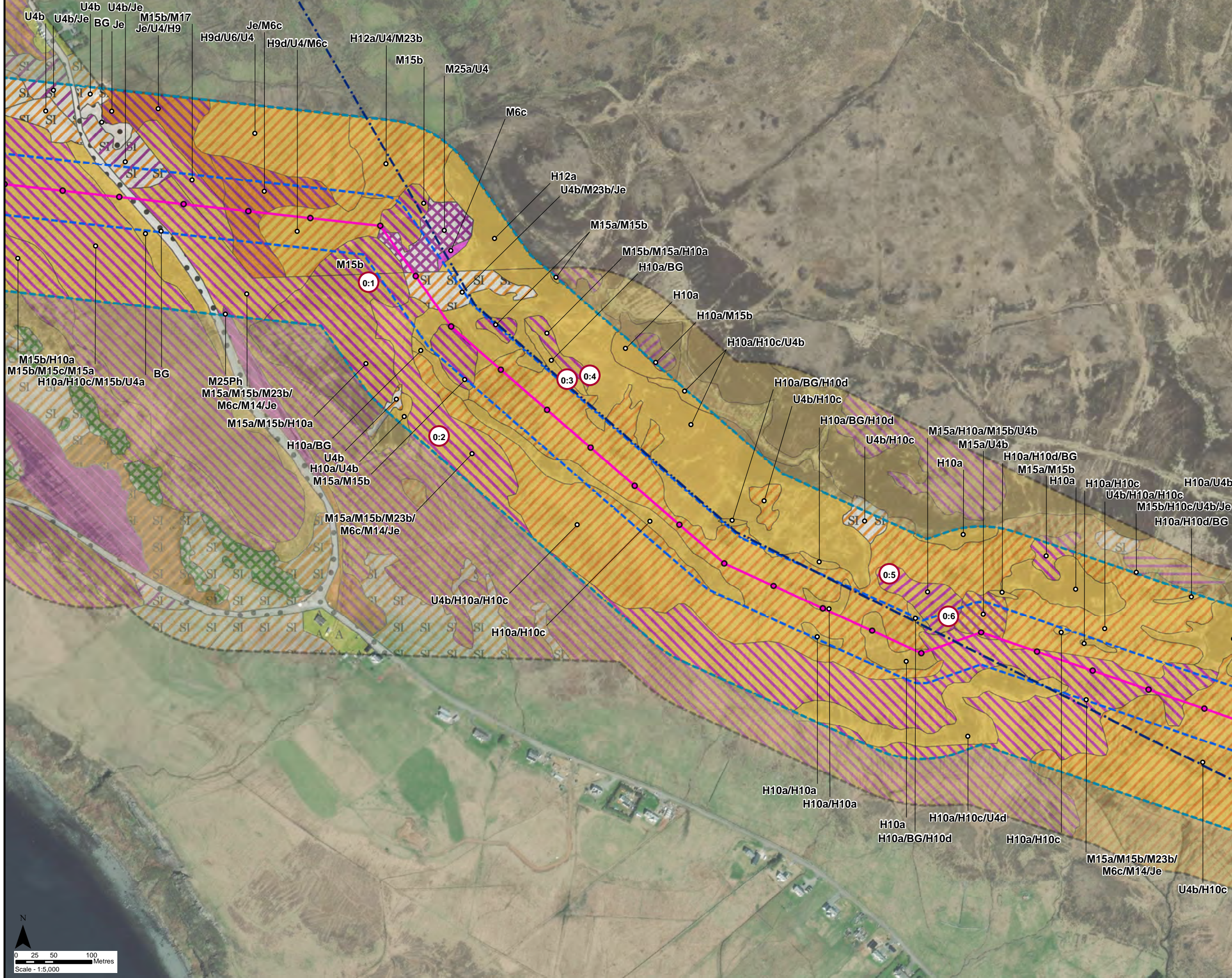
- Broad-Leaved Plantation Woodland (A1.1.2)
- Coniferous Plantation Woodland (A1.2.2)
- Dense/Continuous Scrub (A2.1)
- Scattered Scrub (A2.2)
- Semi-Improved Acid Grassland (B1.2)
- Semi-Improved Acid Grassland/Unimproved Neutral Grassland Mosaic (B1.2/B2.1)
- Semi-Improved Acid Grassland/ Marsh/Marshy Grassland Mosaic (B1.2/B5)
- Semi-Improved Acid Grassland/Continuous Bracken Mosaic (B1.2/C1.1)
- Unimproved Neutral Grassland (B2.1)
- Improved Grassland (B4)
- Marsh/Marshy Grassland (B5)
- Continuous Bracken (C1.1)
- Acid Dry Dwarf Shrub Heath (D1.1)
- Wet Dwarf Shrub Heath (D2)
- Dry Heath/Acid Grassland Mosaic (D5)
- Fen (E3)
- Standing Water (G1)
- Amentiy Grassland (J1.2)
- Building (J3.6)
- Bare Ground (J4)



Reproduced by permission of Ordnance Survey on behalf of HMSO.
 Crown copyright and database right 2022 all rights reserved.
 Esri, Maxar, GeoEye, Earthstar Geographics, CNES/Airbus DS,
 USDA, USGS, AeroGRID, IGN, and the GIS User Community

Project No:	LT91
Project:	Skye Reinforcement Project EIA Report
Title:	Figure V2-4.3 (0.01): National Vegetation Classification (NVC) Survey Area and Results
Drawn by:	LNF
	25/08/2022
Drawing:	EIA_V2-4.3_NVC_Sec0_SKYE





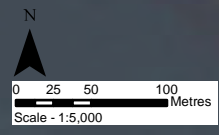
Key

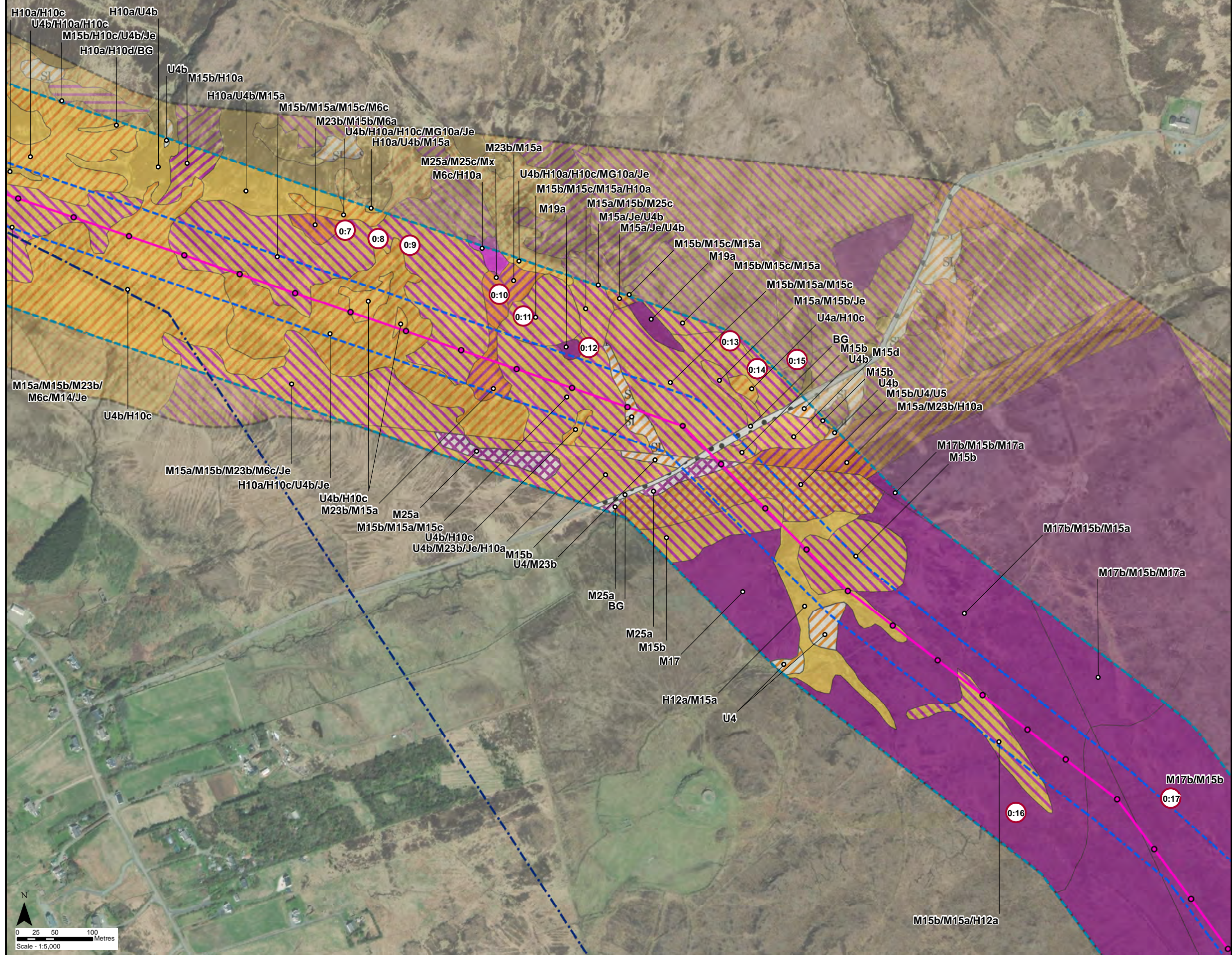
- Proposed Wood Pole (H Pole)
- Proposed OHL Alignment
- Existing 132 kV OHL to be dismantled (Wood Pole)
- Limit of Deviation
- Survey Area
- Study Area - NVC Habitat
- Phase 1 Habitat (Code)**
- SI Semi-Improved Acid Grassland (B1.2)
- SI/M Semi-Improved Acid Grassland/ Marsh/Marshy Grassland Mosaic (B1.2/B5)
- M Marsh/Marshy Grassland (B5)
- D1.1 Acid Dry Dwarf Shrub Heath (D1.1)
- D1.1/D2 Acid Dry Dwarf Shrub Heath/Wet Dwarf Shrub Heath Mosaic (D1.1/D2)
- D2 Wet Dwarf Shrub Heath (D2)
- D2/D5 Wet Dwarf Shrub Heath/Dry Heath/Acid Grassland Mosaic (D2/D5)
- D5 Dry Heath/Acid Grassland Mosaic (D5)
- D6 Wet Heath/Acid Grassland Mosaic (D6)
- E1.7 Wet Modified Bog (E1.7)
- E2.1 Acid Neutral Flush (E2.1)
- E3 Fen (E3)
- J4 Bare Ground (J4)
- Habitats Target Note



Reproduced by permission of Ordnance Survey on behalf of HMSO. Crown copyright and database right 2022 all rights reserved. Esri, Maxar, GeoEye, Earthstar Geographics, CNES/Airbus DS, USDA, USGS, AeroGRID, IGN, and the GIS User Community

Project No:	LT91
Project:	Skye Reinforcement Project EIA Report
Title:	Figure V2-4.3 (0.02): National Vegetation Classification (NVC) Survey Area and Results
Drawn by:	LNF
	25/08/2022
Drawing:	EIA_V2-4.3_NVC_Sec0_SKYE



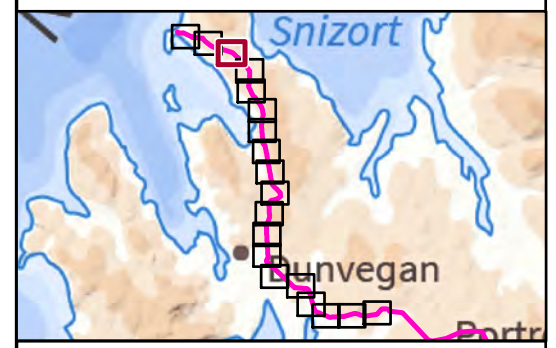


Key

- Proposed Wood Pole (H Pole)
- Proposed OHL Alignment
- - - Existing 132 kV OHL to be dismantled (Wood Pole)
- Limit of Deviation
- Survey Area
- Study Area - NVC Habitat

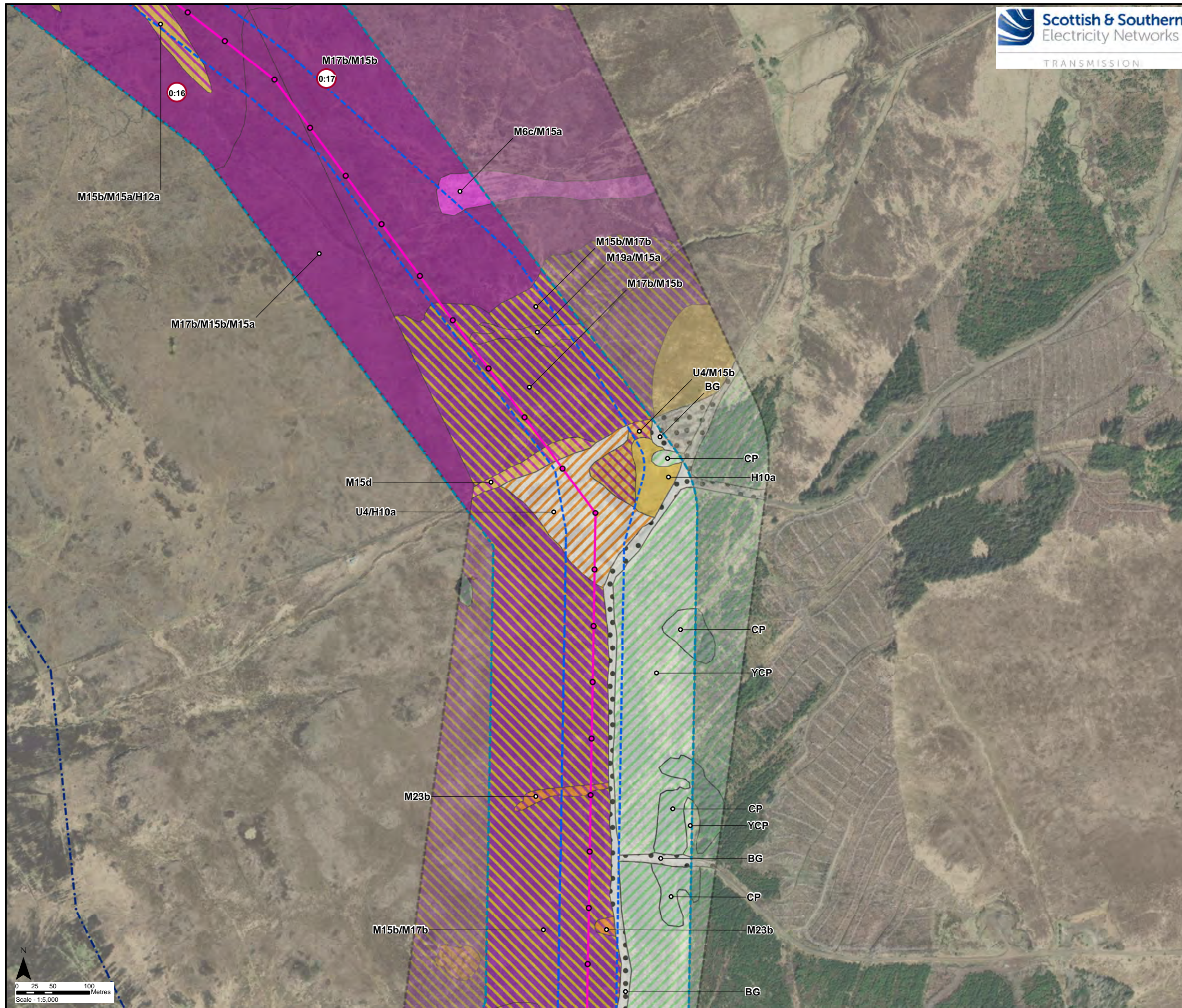
Phase 1 Habitat (Code)

- Unimproved Acid Grassland (B1.1)
- Semi-Improved Acid Grassland (B1.2)
- Marsh/Marshy Grassland (B5)
- Marsh/Marshy Grassland/Wet Dwarf Shrub Heath Mosaic (B5/D2)
- Acid Dry Dwarf Shrub Heath (D1.1)
- Acid Dry Dwarf Shrub Heath/Wet Dwarf Shrub Heath Mosaic (D1.1/D2)
- Wet Dwarf Shrub Heath (D2)
- Wet Dwarf Shrub Heath/Dry Heath/Acid Grassland Mosaic (D2/D5)
- Dry Heath/Acid Grassland Mosaic (D5)
- Wet Heath/Acid Grassland Mosaic (D6)
- Blanket Bog (E1.6.1)
- Wet Modified Bog (E1.7)
- Acid Neutral Flush (E2.1)
- Bare Ground (J4)
- Habitats Target Note



Reproduced by permission of Ordnance Survey on behalf of HMSO. Crown copyright and database right 2022 all rights reserved. Esri, Maxar, GeoEye, Earthstar Geographics, CNES/Airbus DS, USDA, USGS, AeroGRID, IGN, and the GIS User Community

Project No:	LT91
Project:	Skye Reinforcement Project EIA Report
Title:	Figure V2-4.3 (0.03): National Vegetation Classification (NVC) Survey Area and Results
Drawn by:	LNF
	25/08/2022
Drawing:	EIA_V2-4.3_NVC_Sec0_SKYE

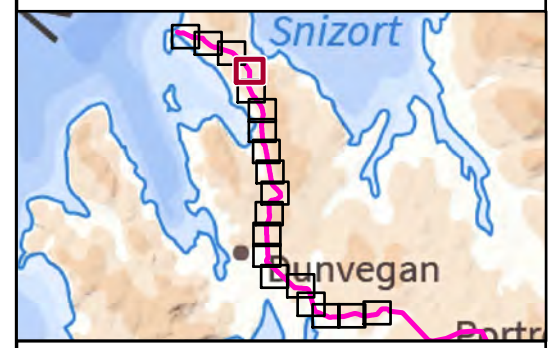


Key

- Proposed Wood Pole (H Pole)
- Proposed OHL Alignment
- - - Existing 132 kV OHL to be dismantled (Wood Pole)
- Limit of Deviation
- Survey Area
- Study Area - NVC Habitat

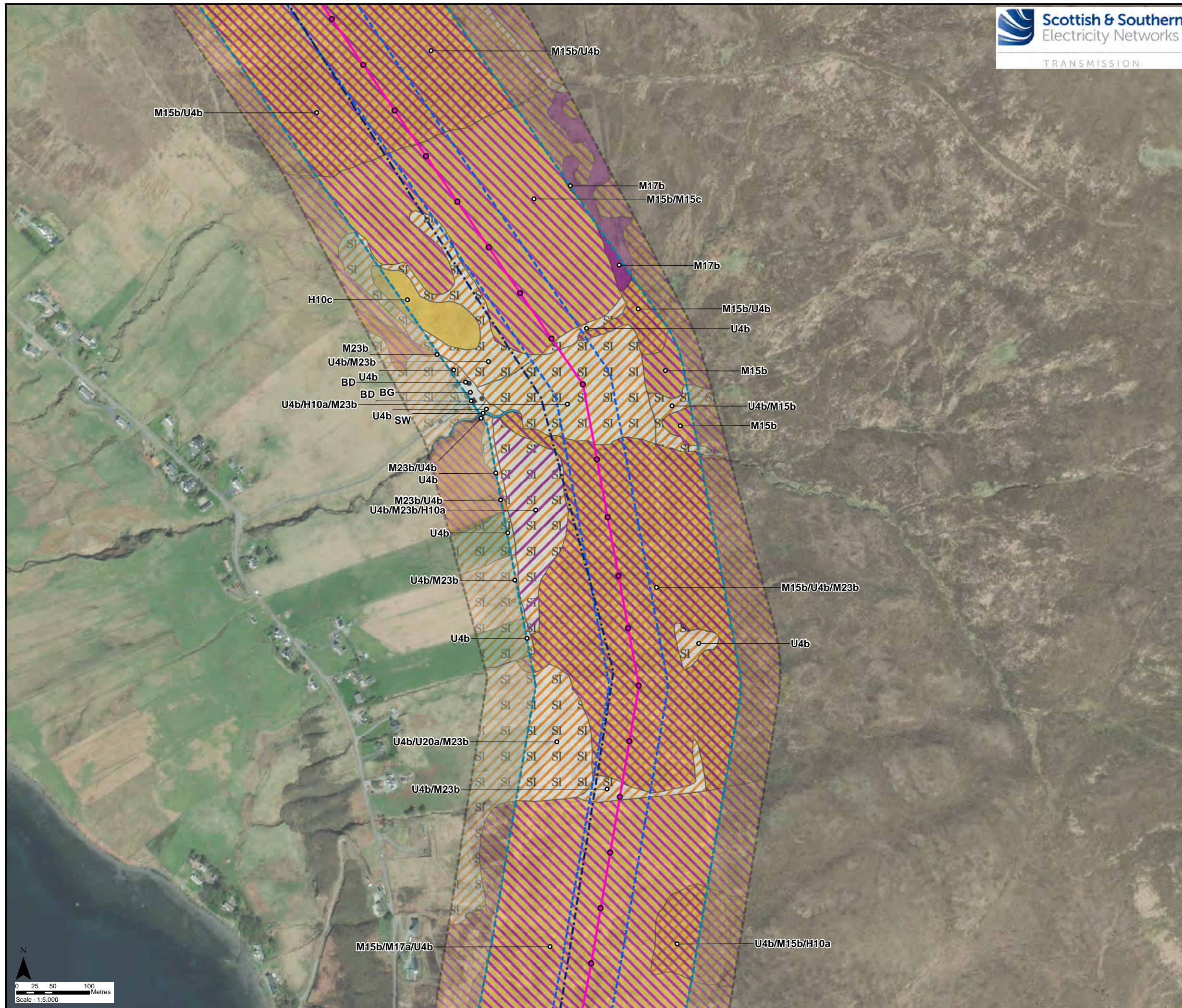
Phase 1 Habitat (Code)

- Coniferous Plantation Woodland (A1.2.2)
- Unimproved Acid Grassland (B1.1)
- Marsh/Marshy Grassland (B5)
- Acid Dry Dwarf Shrub Heath (D1.1)
- Wet Dwarf Shrub Heath (D2)
- Wet Dwarf Shrub Heath/Blanket Bog Mosaic (D2/E1.6.1)
- Wet Heath/Acid Grassland Mosaic (D6)
- Blanket Bog (E1.6.1)
- Acid Neutral Flush (E2.1)
- Bare Ground (J4)
- Habitats Target Note



Reproduced by permission of Ordnance Survey on behalf of HMSO. Crown copyright and database right 2022 all rights reserved. Esri, Maxar, GeoEye, Earthstar Geographics, CNES/Airbus DS, USDA, USGS, AeroGRID, IGN, and the GIS User Community

Project No:	LT91
Project:	Skye Reinforcement Project EIA Report
Title:	Figure V2-4.3 (0.04): National Vegetation Classification (NVC) Survey Area and Results
Drawn by:	LNF 25/08/2022
Drawing:	EIA_V2-4.3_NVC_Sec0_SKYE

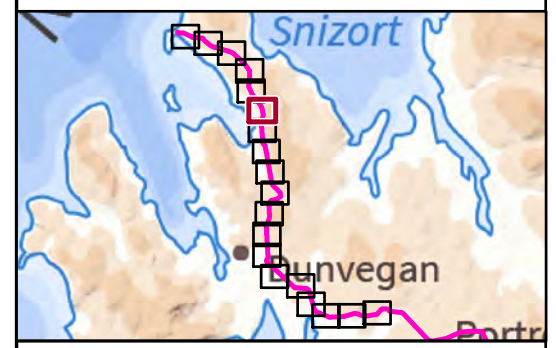


Key

- Proposed Wood Pole (H Pole)
- Proposed OHL Alignment
- Existing 132 kV OHL to be dismantled (Wood Pole)
- Limit of Deviation
- Survey Area
- Study Area - NVC Habitat

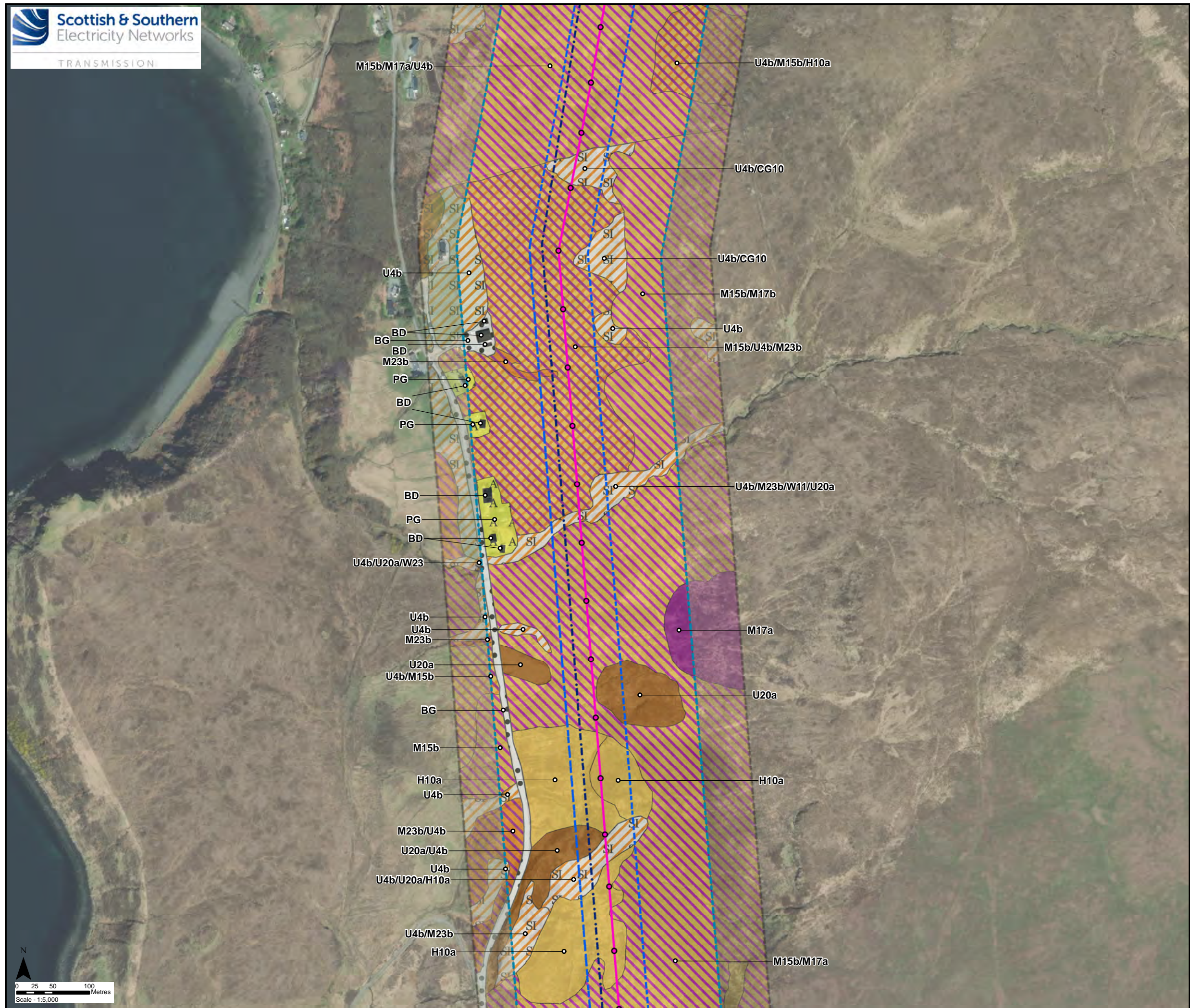
Phase 1 Habitat (Code)

- Semi-Improved Acid Grassland (B1.2)
- Semi-Improved Acid Grassland/ Marsh/Marshy Grassland Mosaic (B1.2/B5)
- Marsh/Marshy Grassland (B5)
- Acid Dry Dwarf Shrub Heath (D1.1)
- Wet Dwarf Shrub Heath (D2)
- Wet Heath/Acid Grassland Mosaic (D6)
- Blanket Bog (E1.6.1)
- Standing Water (G1)
- Building (J3.6)
- Bare Ground (J4)



Reproduced by permission of Ordnance Survey on behalf of HMSO.
 Crown copyright and database right 2022 all rights reserved.
 Esri, Maxar, GeoEye, Earthstar Geographics, CNES/Airbus DS,
 USDA, USGS, AeroGRID, IGN, and the GIS User Community

Project No:	LT91
Project:	Skye Reinforcement Project EIA Report
Title:	Figure V2-4.3 (0.06): National Vegetation Classification (NVC) Survey Area and Results
Drawn by:	LNF 25/08/2022
Drawing:	EIA_V2-4.3_NVC_Sec0_SKYE

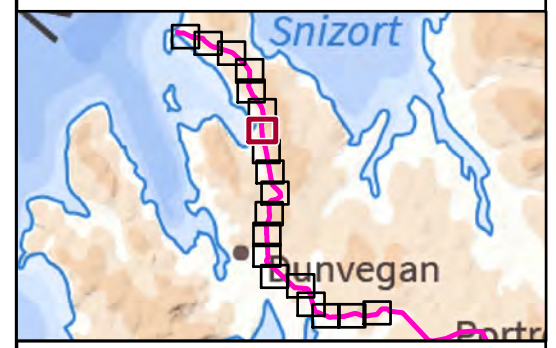


Key

- Proposed Wood Pole (H Pole)
- Proposed OHL Alignment
- Existing 132 kV OHL to be dismantled (Wood Pole)
- Limit of Deviation
- Survey Area
- Study Area - NVC Habitat

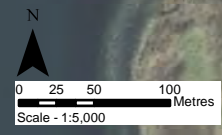
Phase 1 Habitat (Code)

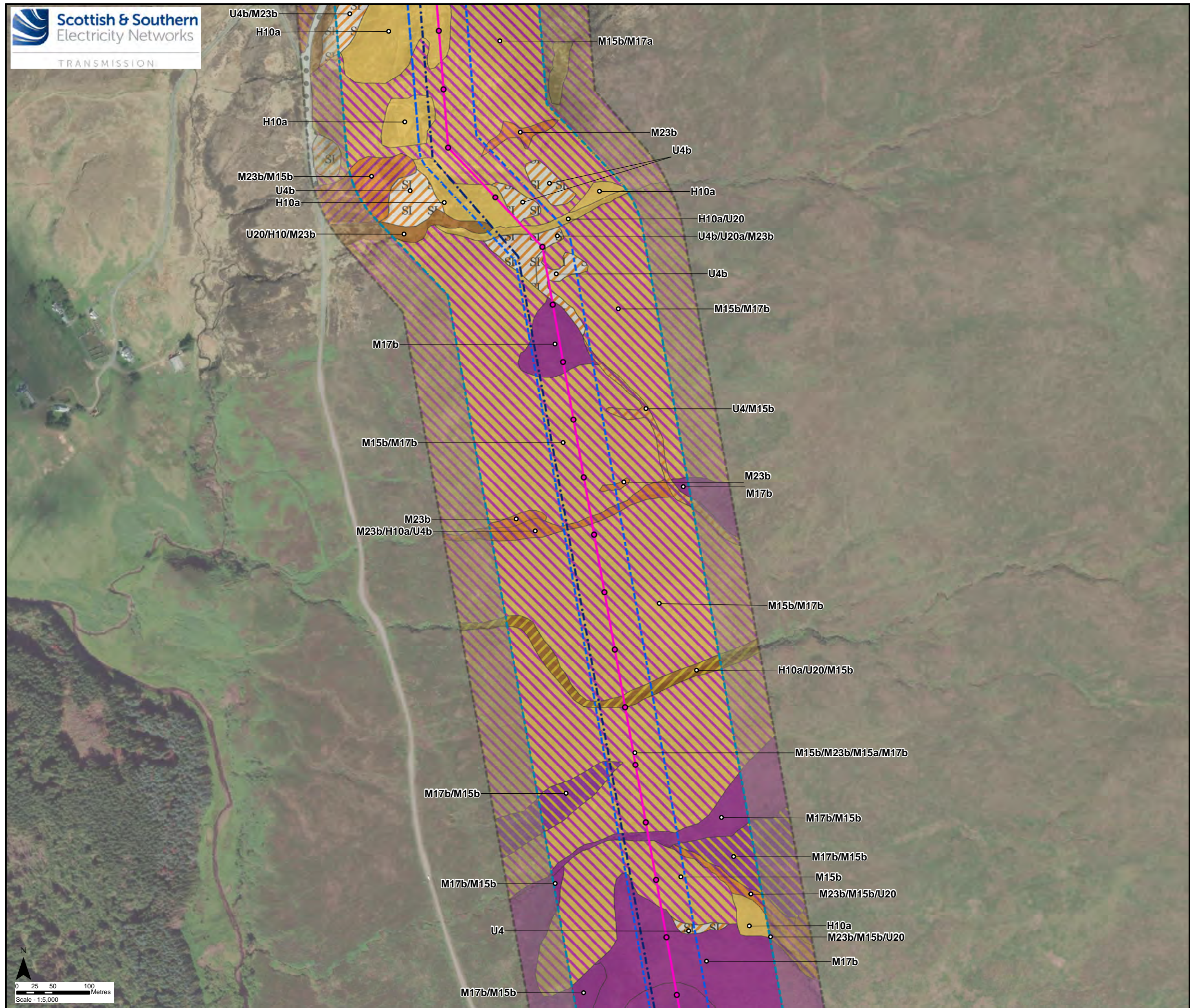
- Semi-Improved Acid Grassland (B1.2)
- Marsh/Marshy Grassland (B5)
- Continuous Bracken (C1.1)
- Acid Dry Dwarf Shrub Heath (D1.1)
- Wet Dwarf Shrub Heath (D2)
- Wet Heath/Acid Grassland Mosaic (D6)
- Blanket Bog (E1.6.1)
- Amentiy Grassland (J1.2)
- Building (J3.6)
- Bare Ground (J4)



Reproduced by permission of Ordnance Survey on behalf of HMSO.
 Crown copyright and database right 2022 all rights reserved.
 Esri, Maxar, GeoEye, Earthstar Geographics, CNES/Airbus DS,
 USDA, USGS, AeroGRID, IGN, and the GIS User Community

Project No:	LT91
Project:	Skye Reinforcement Project EIA Report
Title:	Figure V2-4.3 (0.07): National Vegetation Classification (NVC) Survey Area and Results
Drawn by:	LNF 25/08/2022
Drawing:	EIA_V2-4.3_NVC_Sec0_SKYE



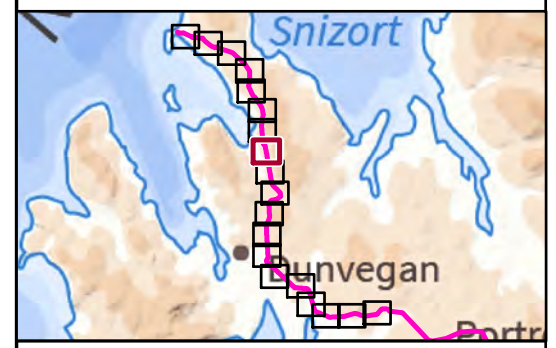


Key

- Proposed Wood Pole (H Pole)
- Proposed OHL Alignment
- Existing 132 kV OHL to be dismantled (Wood Pole)
- Limit of Deviation
- Survey Area
- Study Area - NVC Habitat

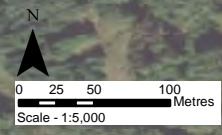
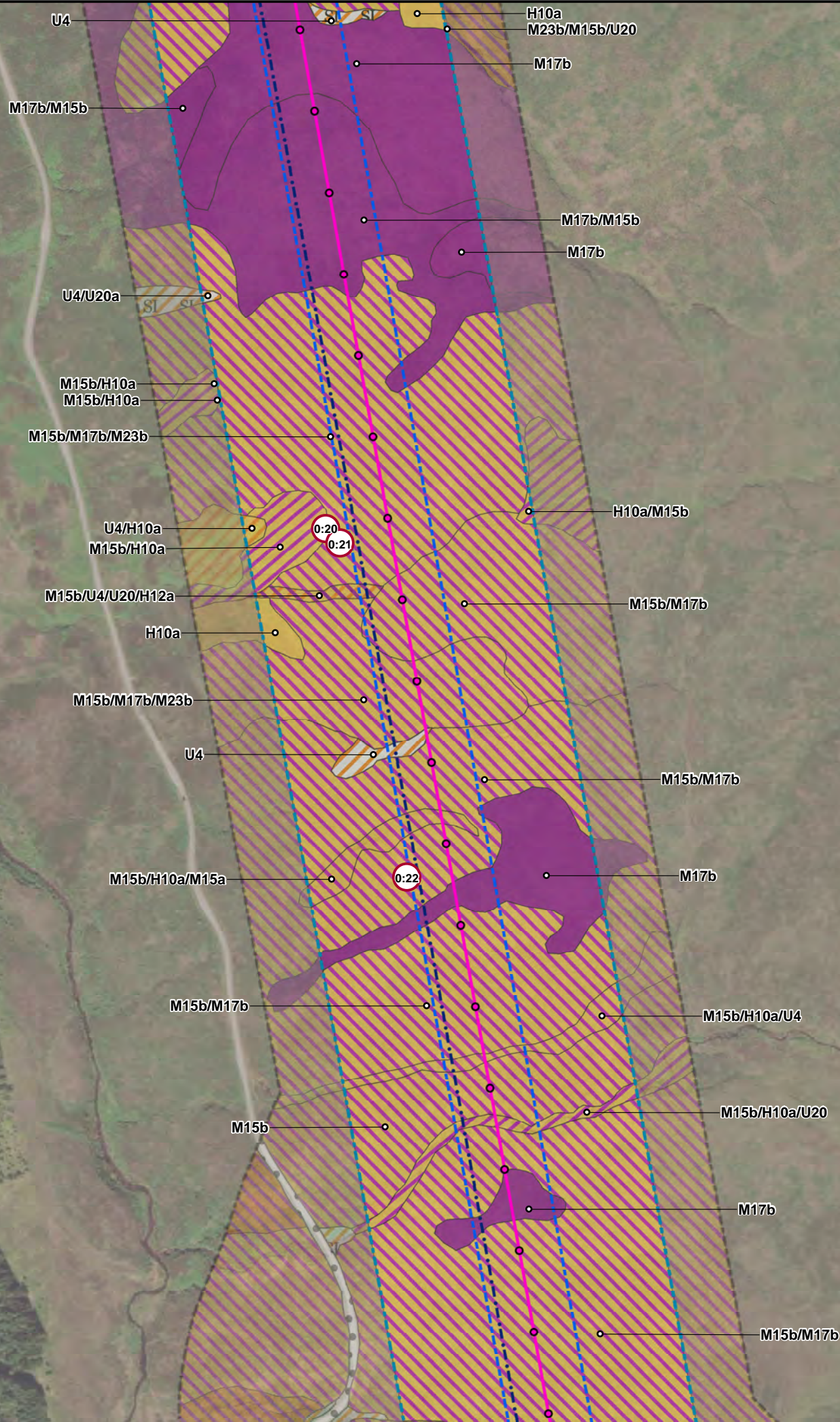
Phase 1 Habitat (Code)

- Semi-Improved Acid Grassland (B1.2)
- Marsh/Marshy Grassland (B5)
- Marsh/Marshy Grassland/Wet Dwarf Shrub Heath Mosaic (B5/D2)
- Continuous Bracken (C1.1)
- Continuous Bracken/Acid Dry Dwarf Shrub Heath Mosaic (C1.1/D1.1)
- Acid Dry Dwarf Shrub Heath (D1.1)
- Wet Dwarf Shrub Heath (D2)
- Wet Dwarf Shrub Heath/Blanket Bog Mosaic (D2/E1.6.1)
- Wet Heath/Acid Grassland Mosaic (D6)
- Blanket Bog (E1.6.1)



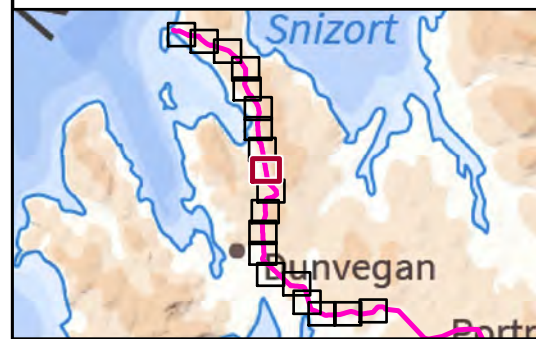
Reproduced by permission of Ordnance Survey on behalf of HMSO. Crown copyright and database right 2022 all rights reserved. Esri, Maxar, GeoEye, Earthstar Geographics, CNES/Airbus DS, USDA, USGS, AeroGRID, IGN, and the GIS User Community

Project No:	LT91
Project:	Skye Reinforcement Project EIA Report
Title:	Figure V2-4.3 (0.08): National Vegetation Classification (NVC) Survey Area and Results
Drawn by:	LNF 25/08/2022
Drawing:	EIA_V2-4.3_NVC_Sec0_SKYE



Key

- Proposed Wood Pole (H Pole)
 - Proposed OHL Alignment
 - Existing 132 kV OHL to be dismantled (Wood Pole)
 - Limit of Deviation
 - Survey Area
 - Study Area - NVC Habitat
- Phase 1 Habitat (Code)**
- Unimproved Acid Grassland (B1.1)
 - Semi-Improved Acid Grassland (B1.2)
 - Marsh/Marshy Grassland (B5)
 - Acid Dry Dwarf Shrub Heath (D1.1)
 - Acid Dry Dwarf Shrub Heath/Wet Dwarf Shrub Heath Mosaic (D1.1/D2)
 - Wet Dwarf Shrub Heath (D2)
 - Dry Heath/Acid Grassland Mosaic (D5)
 - Wet Heath/Acid Grassland Mosaic (D6)
 - Blanket Bog (E1.6.1)
- Habitats Target Note

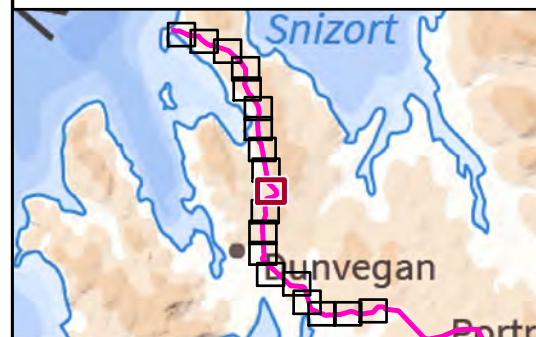
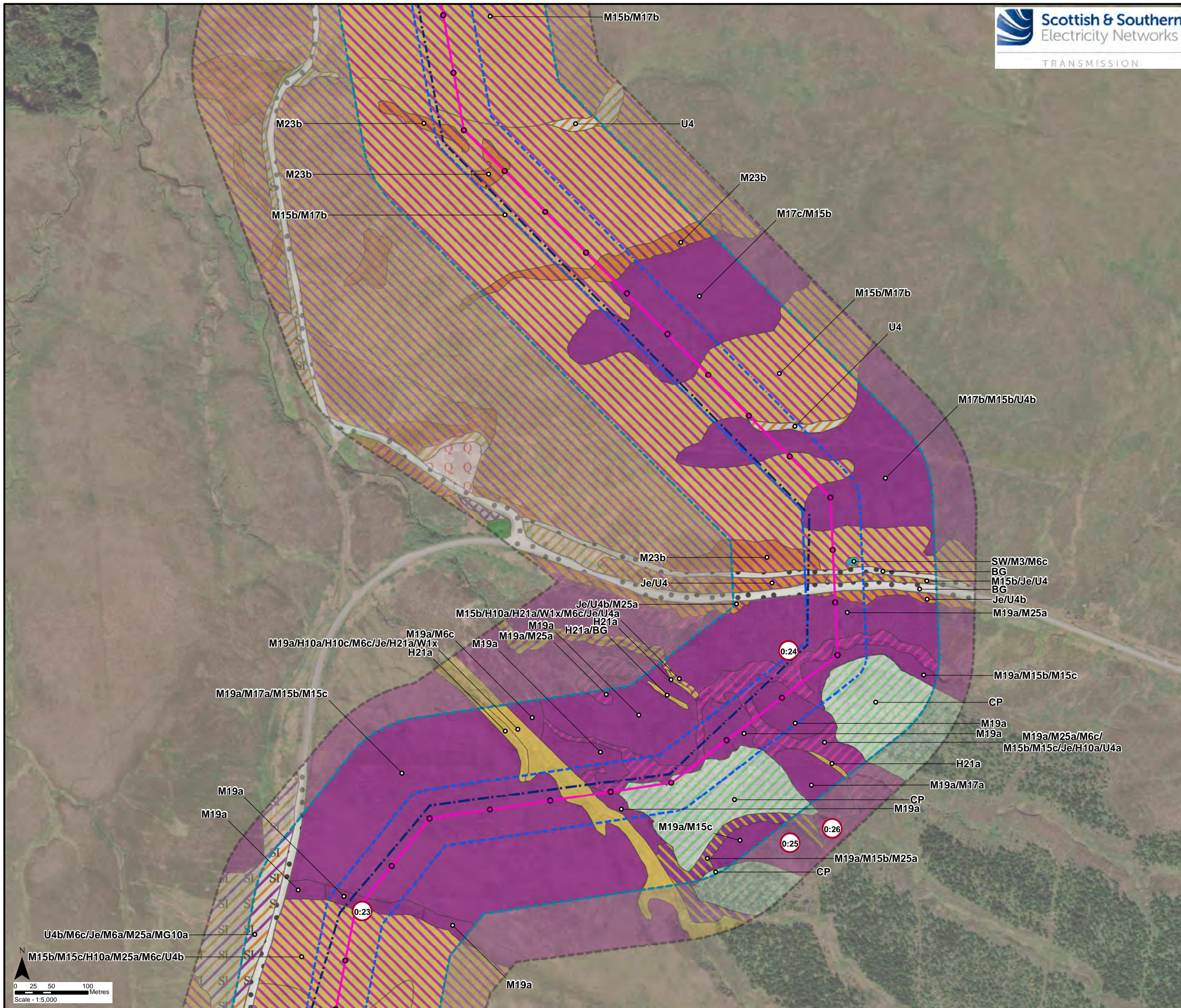


Reproduced by permission of Ordnance Survey on behalf of HMSO.
 Crown copyright and database right 2022 all rights reserved.
 Esri, Maxar, GeoEye, Earthstar Geographics, CNES/Airbus DS,
 USDA, USGS, AeroGRID, IGN, and the GIS User Community

Project No:	LT91
Project:	Skye Reinforcement Project EIA Report
Title:	Figure V2-4.3 (0.09): National Vegetation Classification (NVC) Survey Area and Results
Drawn by:	LNF 25/08/2022
Drawing:	EIA_V2-4.3_NVC_Sec0_SKYE

Key

- Proposed Wood Pole (H Pole)
 - Proposed OHL Alignment
 - Existing 132 kV OHL to be dismantled (Wood Pole)
 - Limit of Deviation
 - Survey Area
 - Study Area - NVC Habitat
- Phase 1 Habitat (Code)**
- Coniferous Plantation Woodland (A1.2.2)
 - Unimproved Acid Grassland (B1.1)
 - Semi-Improved Acid Grassland/ Marsh/Marshy Grassland Mosaic (B1.2/B5)
 - Marsh/Marshy Grassland (B5)
 - Acid Dry Dwarf Shrub Heath (D1.1)
 - Acid Dry Dwarf Shrub Heath/Wet Dwarf Shrub Heath Mosaic (D1.1/D2)
 - Wet Dwarf Shrub Heath (D2)
 - Wet Dwarf Shrub Heath/Blanket Bog Mosaic (D2/E1.6.1)
 - Wet Heath/Acid Grassland Mosaic (D6)
 - Blanket Bog (E1.6.1)
 - Blanket Bog/Wet Modified Bog Mosaic (E1.6.1/E1.7)
 - Standing Water (G1)
 - Bare Ground (J4)
 - Habitats Target Note



Reproduced by permission of Ordnance Survey on behalf of HMSO. Crown copyright and database right 2022 all rights reserved. Esri, Maxar, GeoEye, Earthstar Geographics, CNES/Airbus DS, USDA, USGS, AeroGRID, IGN, and the GIS User Community

Project No:	LT91
Project:	Skye Reinforcement Project EIA Report
Title:	Figure V2-4.3 (0.10): National Vegetation Classification (NVC) Survey Area and Results
Drawn by:	LNF
	25/08/2022
Drawing:	EIA_V2-4.3_NVC_Sec0_SKYE