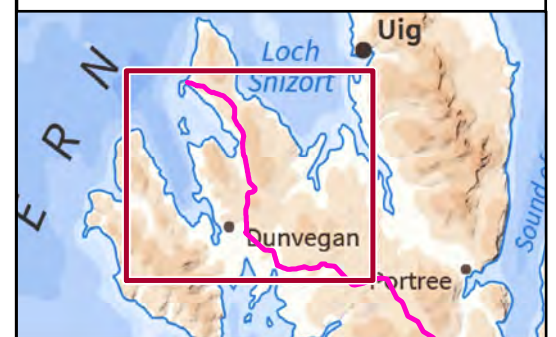
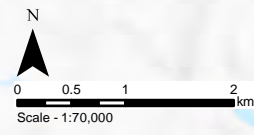


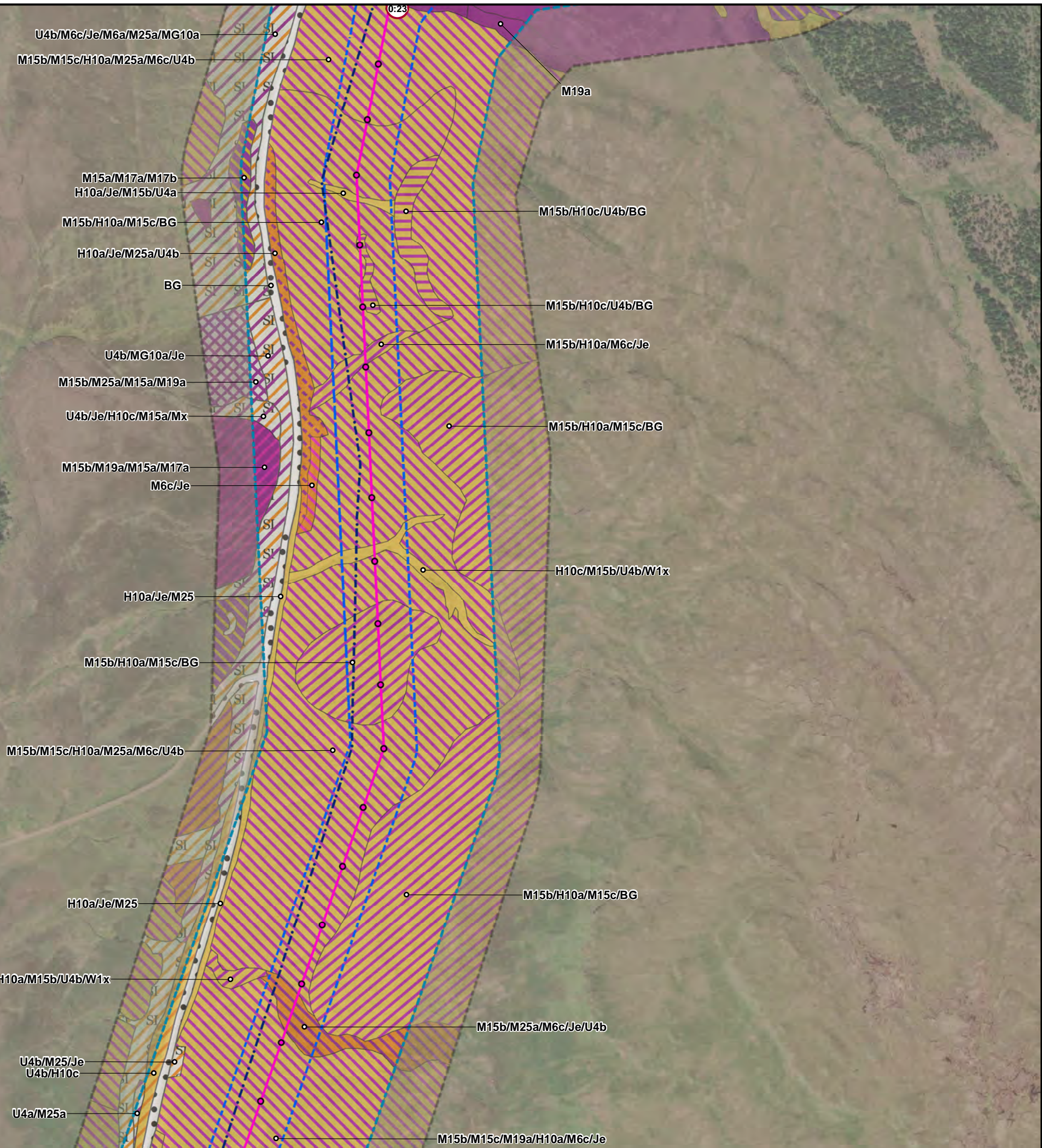
Key

- Proposed OHL Alignment
- Study Area - NVC Habitat
- Section 0 Tile Extent



Reproduced by permission of Ordnance Survey on behalf of HMSO.
Crown copyright and database right 2022 all rights reserved.
Contains OS data © Crown Copyright and database right 2020
Contains OS data © Crown Copyright and database right 2019

Project No:	LT91
Project:	Skye Reinforcement Project EIA Report
Title:	Figure V2.4.3 (0.00): National Vegetation Classification (NVC) Survey Area and Results
Drawn by:	LM 10/08/2022
Drawing:	EIA_V2.4.3_NVC_Sec0_Tile0_SKYE

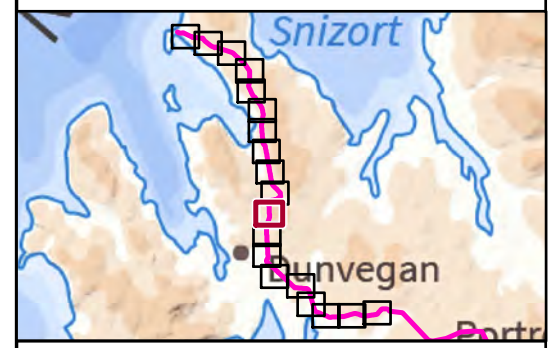


Key

- Proposed Wood Pole (H Pole)
- Proposed OHL Alignment
- Existing 132 kV OHL to be dismantled (Wood Pole)
- Limit of Deviation
- Survey Area
- Study Area - NVC Habitat

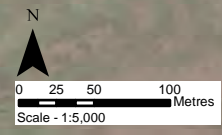
Phase 1 Habitat (Code)

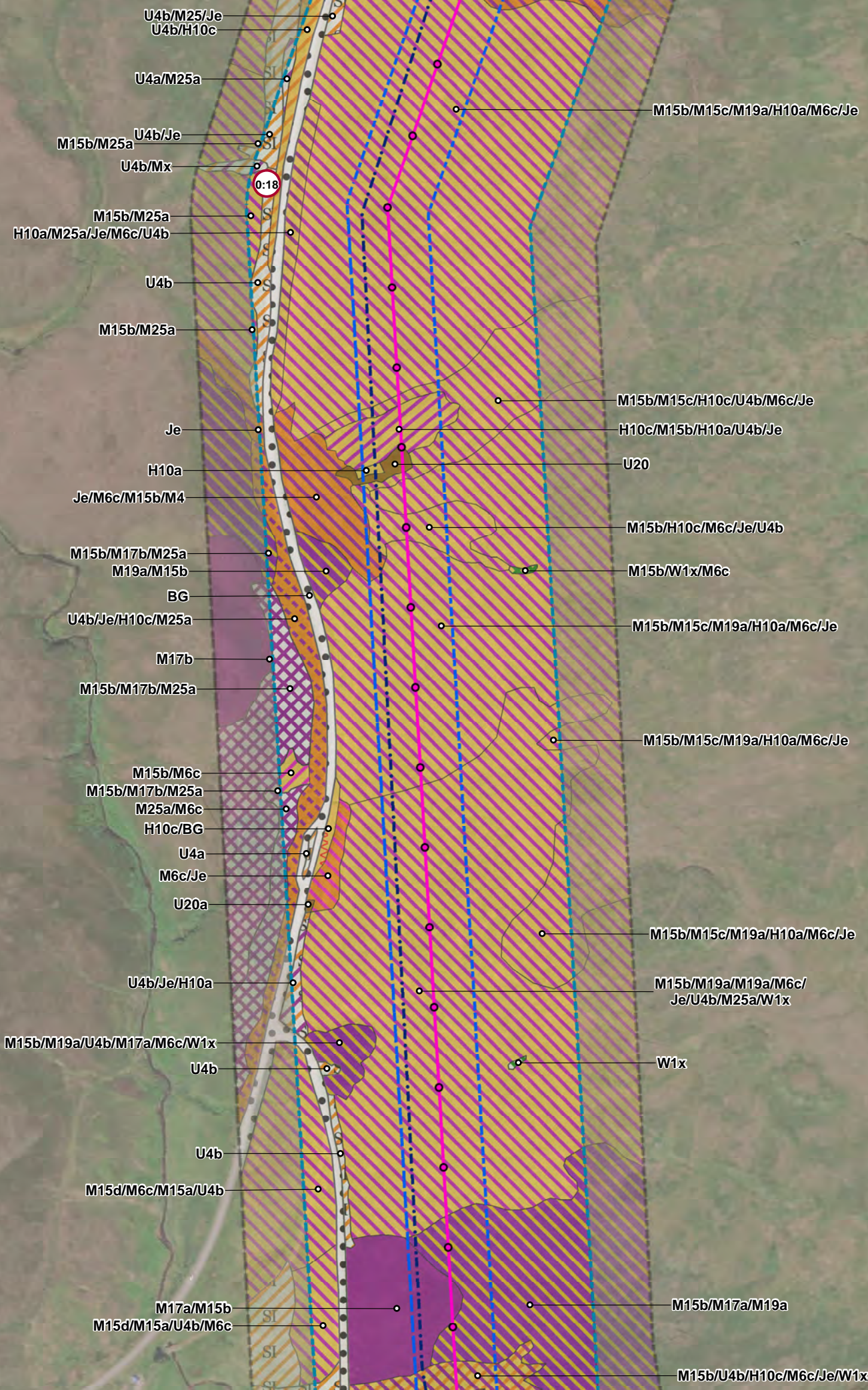
- Semi-Improved Acid Grassland (B1.2)
- Semi-Improved Acid Grassland/ Marsh/Marshy Grassland Mosaic (B1.2/B5)
- Marsh/Marshy Grassland (B5)
- Marsh/Marshy Grassland/Acid Dry Dwarf Shrub Heath Mosaic (B5/D1.1)
- Marsh/Marshy Grassland/Dry Heath/Acid Grassland Mosaic (B5/D5)
- Marsh/Marshy Grassland/Acid Neutral Flush Mosaic (B5/E2.1)
- Acid Dry Dwarf Shrub Heath (D1.1)
- Acid Dry Dwarf Shrub Heath/Wet Dwarf Shrub Heath Mosaic (D1.1/D2)
- Wet Dwarf Shrub Heath (D2)
- Wet Dwarf Shrub Heath/Dry Heath/Acid Grassland Mosaic (D2/D5)
- Wet Dwarf Shrub Heath/Blanket Bog Mosaic (D2/E1.6.1)
- Dry Heath/Acid Grassland Mosaic (D5)
- Blanket Bog (E1.6.1)
- Blanket Bog/Wet Modified Bog Mosaic (E1.6.1/E1.7)
- Wet Modified Bog (E1.7)
- Bare Ground (J4)
- Habitats Target Note



Reproduced by permission of Ordnance Survey on behalf of HMSO. Crown copyright and database right 2022 all rights reserved. Esri, Maxar, GeoEye, Earthstar Geographics, CNES/Airbus DS, USDA, USGS, AeroGRID, IGN, and the GIS User Community

Project No:	LT91
Project:	Skye Reinforcement Project EIA Report
Title:	Figure V2-4.3 (0.11): National Vegetation Classification (NVC) Survey Area and Results
Drawn by:	LNF 25/08/2022
Drawing:	EIA_V2-4.3_NVC_Sec0_SKYE



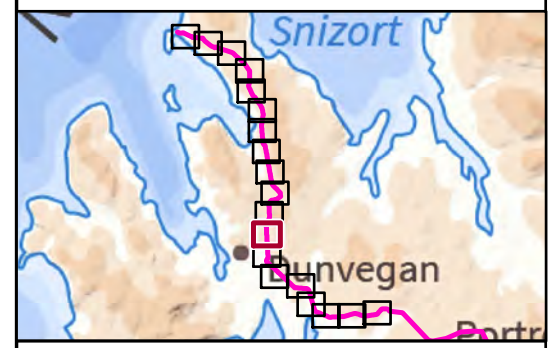


Key

- Proposed Wood Pole (H Pole)
- Proposed OHL Alignment
- Existing 132 kV OHL to be dismantled (Wood Pole)
- Limit of Deviation
- Survey Area
- Study Area - NVC Habitat

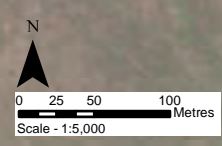
Phase 1 Habitat (Code)

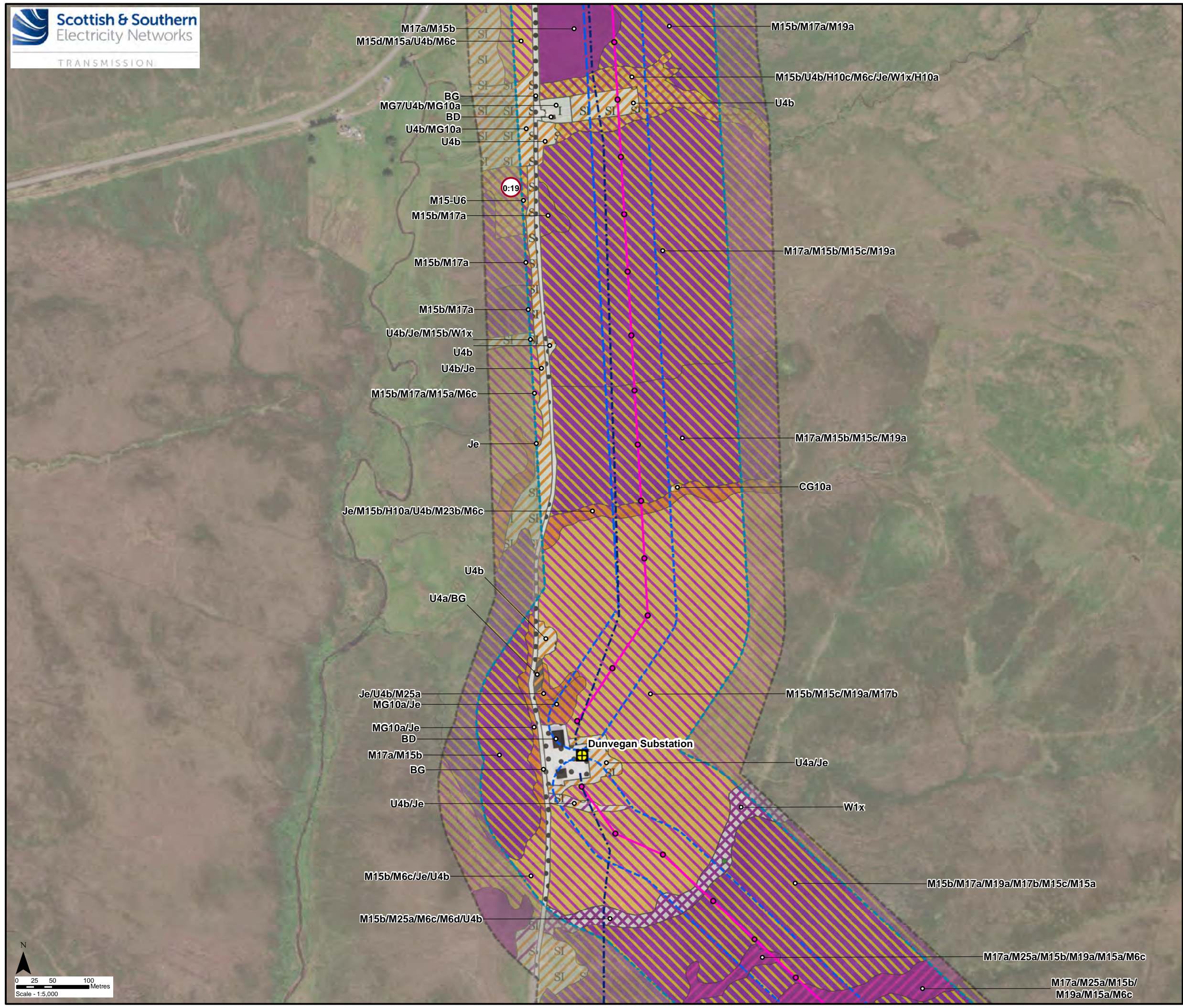
- Dense/Continuous Scrub (A2.1)
- Dense/Continuous Scrub/Wet Dwarf Shrub Heath Mosaic (A2.1/D2)
- Semi-Improved Acid Grassland (B1.2)
- Semi-Improved Acid Grassland/ Marsh/Marshy Grassland Mosaic (B1.2/B5)
- Marsh/Marshy Grassland (B5)
- Marsh/Marshy Grassland/Acid Dry Dwarf Shrub Heath Mosaic (B5/D1.1)
- Marsh/Marshy Grassland/Dry Heath/Acid Grassland Mosaic (B5/D5)
- Marsh/Marshy Grassland/Acid Neutral Flush Mosaic (B5/E2.1)
- Continuous Bracken (C1.1)
- Acid Dry Dwarf Shrub Heath (D1.1)
- Acid Dry Dwarf Shrub Heath/Wet Dwarf Shrub Heath Mosaic (D1.1/D2)
- Acid Dry Dwarf Shrub Heath/Natural Acid/Neutral Inland Cliff Mosaic (D1.1/1.1.1)
- Wet Dwarf Shrub Heath (D2)
- Wet Dwarf Shrub Heath/Blanket Bog Mosaic (D2/E1.6.1)
- Wet Dwarf Shrub Heath/Acid Neutral Flush Mosaic (D2/E2.1)
- Dry Heath/Acid Grassland Mosaic (D5)
- Wet Heath/Acid Grassland Mosaic (D6)
- Blanket Bog (E1.6.1)
- Wet Modified Bog (E1.7)
- Bare Ground (J4)
- Habitats Target Note



Reproduced by permission of Ordnance Survey on behalf of HMSO. Crown copyright and database right 2022 all rights reserved. Esri, Maxar, GeoEye, Earthstar Geographics, CNES/Airbus DS, USDA, USGS, AeroGRID, IGN, and the GIS User Community

Project No:	LT91
Project:	Skye Reinforcement Project EIA Report
Title:	Figure V2-4.3 (0.12): National Vegetation Classification (NVC) Survey Area and Results
Drawn by:	LNF 25/08/2022
Drawing:	EIA_V2-4.3_NVC_Sec0_SKYE



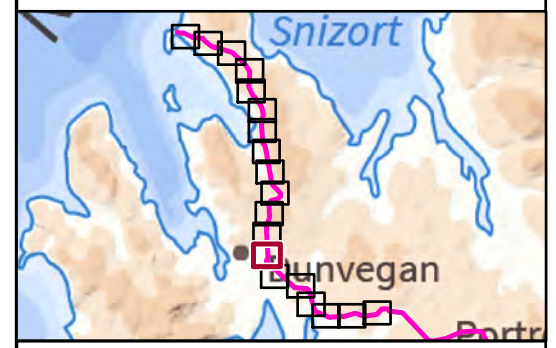


Key

- Proposed Wood Pole (H Pole)
- Proposed OHL Alignment
- - - Existing 132 kV OHL to be dismantled (Wood Pole)
- ⊞ Existing Substation
- ▭ Limit of Deviation
- ▭ Survey Area
- ▭ Study Area - NVC Habitat

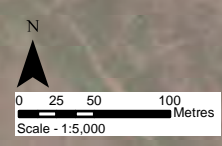
Phase 1 Habitat (Code)

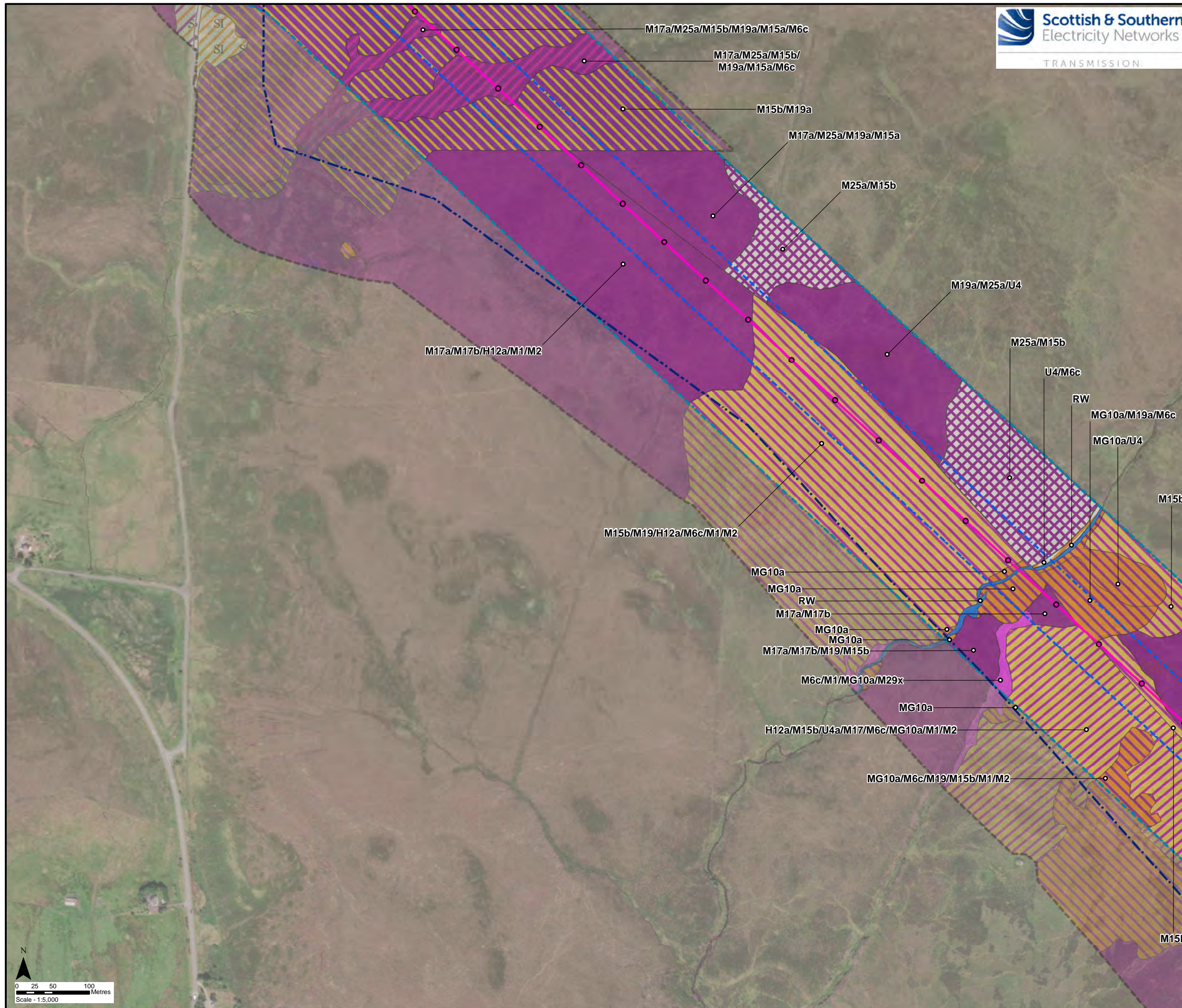
- ▨ Dense/Continuous Scrub (A2.1)
- ▨ Semi-Improved Acid Grassland (B1.2)
- ▨ Semi-Improved Acid Grassland/ Marsh/Marshy Grassland Mosaic (B1.2/B5)
- ▨ Semi-Improved Acid Grassland/Bare Ground Mosaic (B1.2/J4)
- ▨ Unimproved Calcareous Grassland (B3.1)
- ▨ Improved Grassland (B4)
- ▨ Marsh/Marshy Grassland (B5)
- ▨ Wet Dwarf Shrub Heath (D2)
- ▨ Wet Dwarf Shrub Heath/Blanket Bog Mosaic (D2/E1.6.1)
- ▨ Wet Heath/Acid Grassland Mosaic (D6)
- ▨ Blanket Bog (E1.6.1)
- ▨ Blanket Bog/Wet Modified Bog Mosaic (E1.6.1/E1.7)
- ▨ Wet Modified Bog (E1.7)
- ▨ Building (J3.6)
- ▨ Bare Ground (J4)
- Habitats Target Note



Reproduced by permission of Ordnance Survey on behalf of HMSO. Crown copyright and database right 2022 all rights reserved. Esri, Maxar, GeoEye, Earthstar Geographics, CNES/Airbus DS, USDA, USGS, AeroGRID, IGN, and the GIS User Community

Project No:	LT91
Project:	Skye Reinforcement Project EIA Report
Title:	Figure V2-4.3 (0.13): National Vegetation Classification (NVC) Survey Area and Results
Drawn by:	LNF
	25/08/2022
Drawing:	EIA_V2-4.3_NVC_Sec0_SKYE



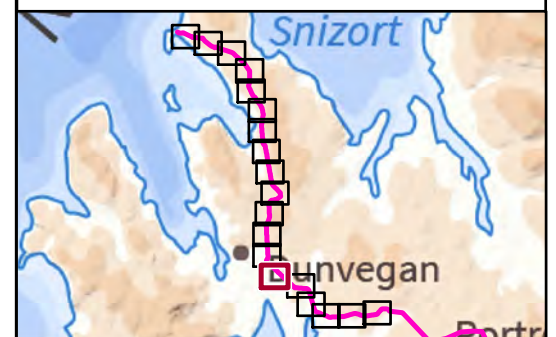


Key

- Proposed Wood Pole (H Pole)
- Proposed OHL Alignment
- Existing 132 kV OHL to be dismantled (Wood Pole)
- Limit of Deviation
- Survey Area
- Study Area - NVC Habitat

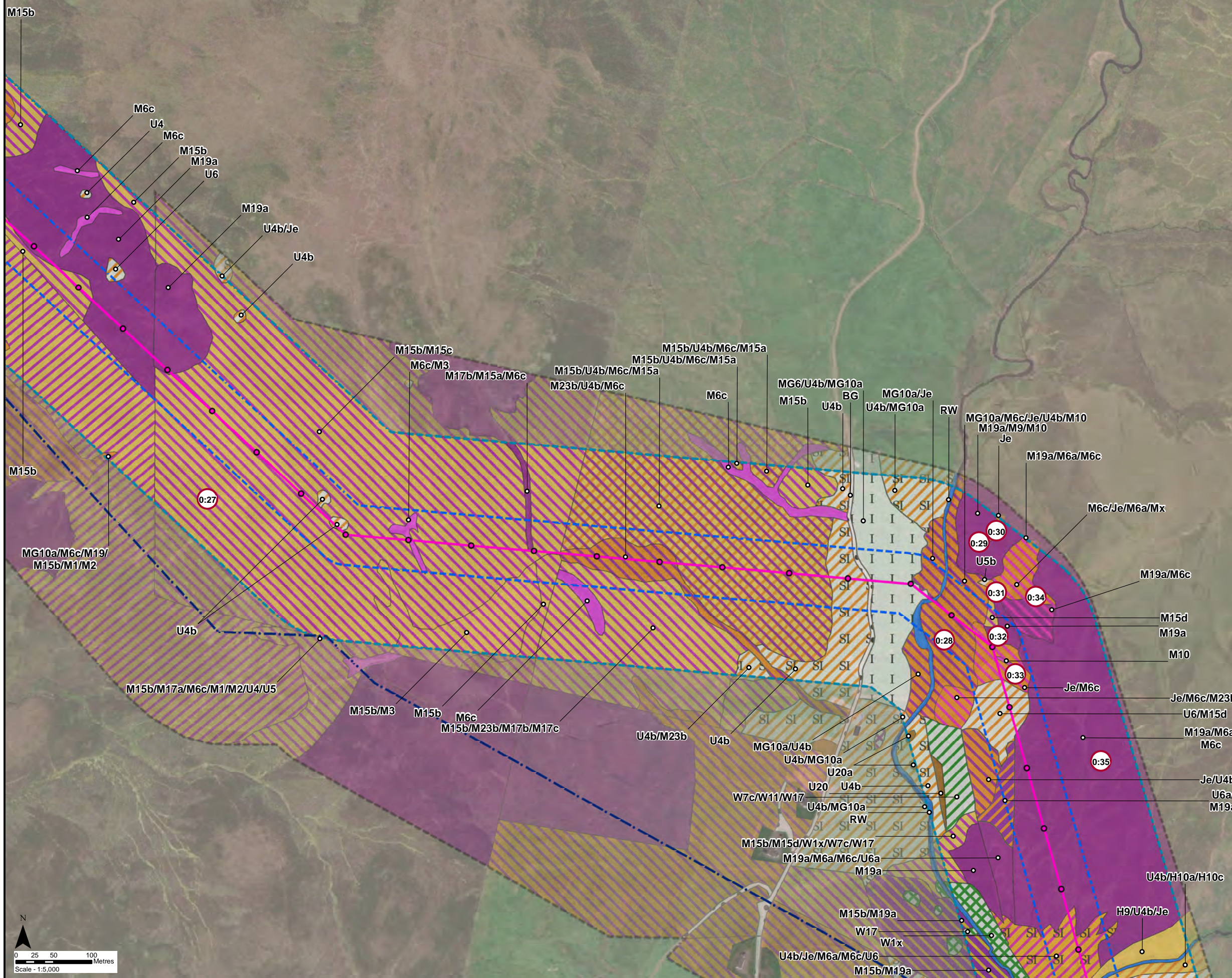
Phase 1 Habitat (Code)

- Unimproved Acid Grassland (B1.1)
- Marsh/Marshy Grassland (B5)
- Acid Dry Dwarf Shrub Heath/Wet Dwarf Shrub Heath Mosaic (D1.1/D2)
- Wet Dwarf Shrub Heath (D2)
- Wet Dwarf Shrub Heath/Blanket Bog Mosaic (D2/E1.6.1)
- Blanket Bog (E1.6.1)
- Blanket Bog/Wet Modified Bog Mosaic (E1.6.1/E1.7)
- Wet Modified Bog (E1.7)
- Acid Neutral Flush (E2.1)
- Running Water (G2)



Reproduced by permission of Ordnance Survey on behalf of HMSO. Crown copyright and database right 2022 all rights reserved. Esri, Maxar, GeoEye, Earthstar Geographics, CNES/Airbus DS, USDA, USGS, AeroGRID, IGN, and the GIS User Community

Project No:	LT91
Project:	Skye Reinforcement Project EIA Report
Title:	Figure V2-4.3 (0.14): National Vegetation Classification (NVC) Survey Area and Results
Drawn by:	LNF 25/08/2022
Drawing:	EIA_V2-4.3_NVC_Sec0_SKYE

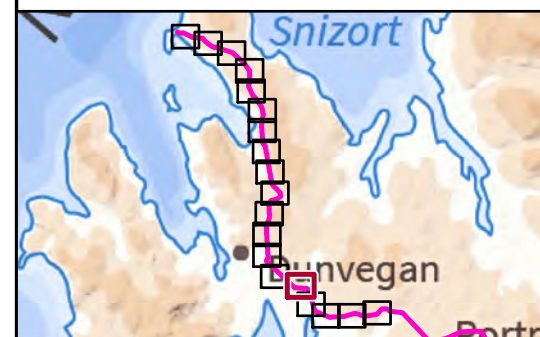


Key

- Proposed Wood Pole (H Pole)
- Proposed OHL Alignment
- - - Existing 132 kV OHL to be dismantled (Wood Pole)
- Limit of Deviation
- Survey Area
- Study Area - NVC Habitat

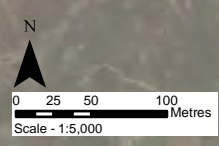
Phase 1 Habitat (Code)

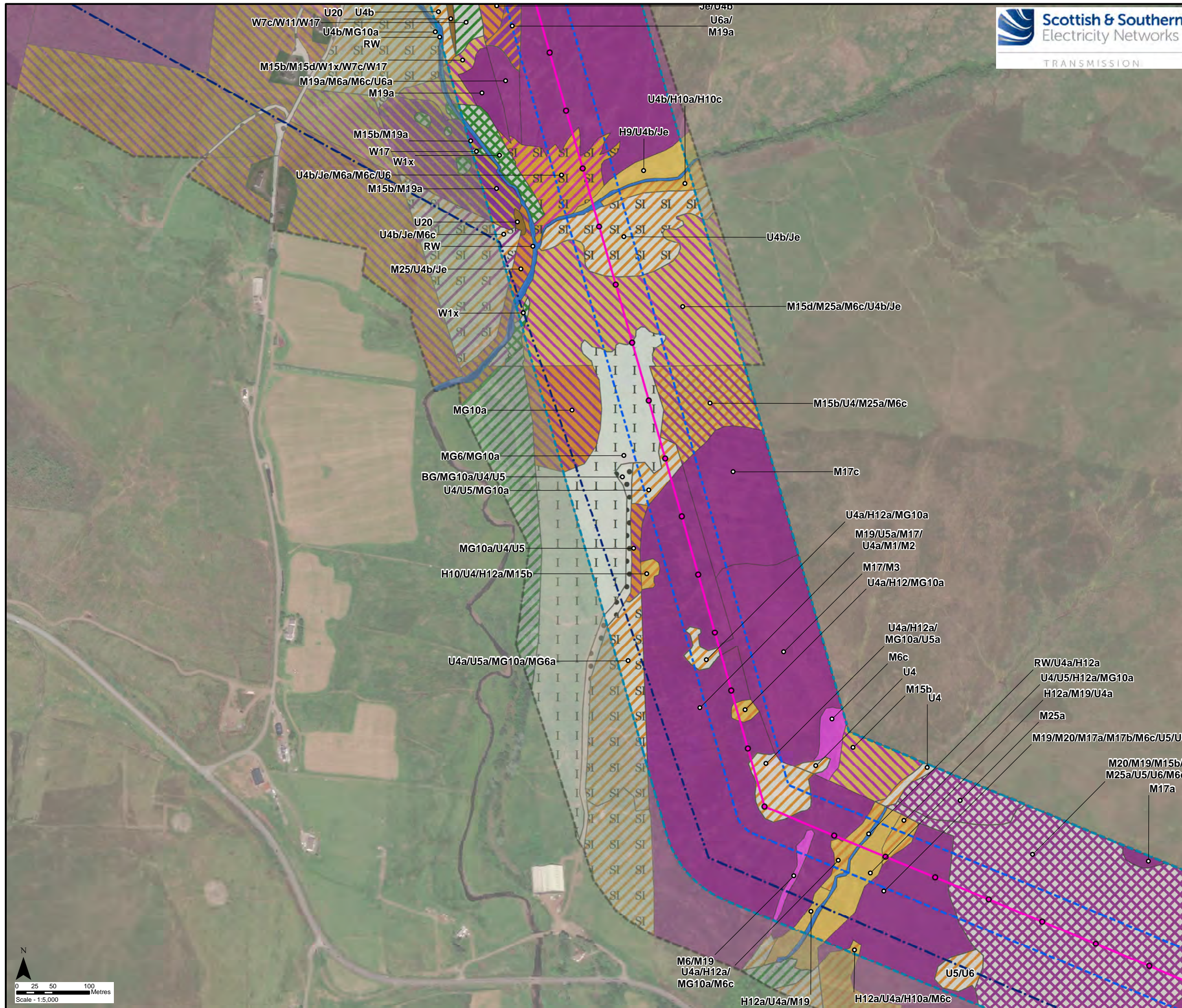
- Broad-Leaved Plantation Woodland (A1.1.2)
- Dense/Continuous Scrub (A2.1)
- Unimproved Acid Grassland (B1.1)
- Unimproved Acid Grassland/Blanket Bog Mosaic (B1.1/E1.6.1)
- Semi-Improved Acid Grassland (B1.2)
- Semi-Improved Acid Grassland/Acid Neutral Flush Mosaic (B1.2/E2.1)
- Improved Grassland (B4)
- Marsh/Marshy Grassland (B5)
- Marsh/Marshy Grassland/Acid Neutral Flush Mosaic (B5/E2.1)
- Continuous Bracken (C1.1)
- Acid Dry Dwarf Shrub Heath (D1.1)
- Acid Dry Dwarf Shrub Heath/Wet Dwarf Shrub Heath Mosaic (D1.1/D2)
- Wet Dwarf Shrub Heath (D2)
- Wet Dwarf Shrub Heath/Blanket Bog Mosaic (D2/E1.6.1)
- Dry Heath/Acid Grassland Mosaic (D5)
- Wet Heath/Acid Grassland Mosaic (D6)
- Blanket Bog (E1.6.1)
- Blanket Bog/Acid Neutral Flush Mosaic (E1.6.1/E2.1)
- Acid Neutral Flush (E2.1)
- Basic Flush (E2.2)
- Running Water (G2)
- Bare Ground (J4)
- Habitats Target Note



Reproduced by permission of Ordnance Survey on behalf of HMSO. Crown copyright and database right 2022 all rights reserved. Esri, Maxar, GeoEye, Earthstar Geographics, CNES/Airbus DS, USDA, USGS, AeroGRID, IGN, and the GIS User Community

Project No:	LT91
Project:	Skye Reinforcement Project EIA Report
Title:	Figure V2-4.3 (0.15): National Vegetation Classification (NVC) Survey Area and Results
Drawn by:	LNF
Date:	25/08/2022
Drawing:	EIA_V2-4.3_NVC_Sec0_SKYE



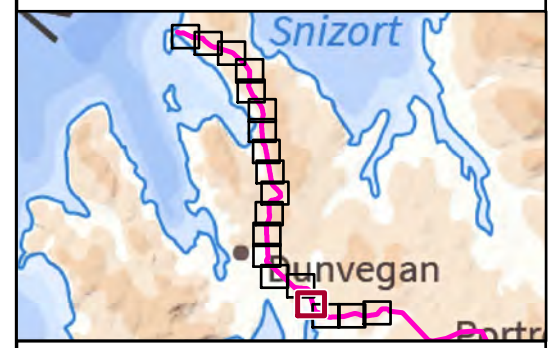


Key

- Proposed Wood Pole (H Pole)
- Proposed OHL Alignment
- - - Existing 132 kV OHL to be dismantled (Wood Pole)
- Limit of Deviation
- Survey Area
- Study Area - NVC Habitat

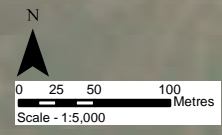
Phase 1 Habitat (Code)

- Broad-Leaved Plantation Woodland (A1.1.2)
- Dense/Continuous Scrub (A2.1)
- Unimproved Acid Grassland (B1.1)
- Unimproved Acid Grassland/Blanket Bog Mosaic (B1.1/E1.6.1)
- Semi-Improved Acid Grassland (B1.2)
- Semi-Improved Acid Grassland/ Marsh/Marshy Grassland Mosaic (B1.2/B5)
- Semi-Improved Acid Grassland/Acid Neutral Flush Mosaic (B1.2/E2.1)
- Improved Grassland (B4)
- Marsh/Marshy Grassland (B5)
- Continuous Bracken (C1.1)
- Acid Dry Dwarf Shrub Heath (D1.1)
- Wet Dwarf Shrub Heath (D2)
- Wet Dwarf Shrub Heath/Blanket Bog Mosaic (D2/E1.6.1)
- Dry Heath/Acid Grassland Mosaic (D5)
- Wet Heath/Acid Grassland Mosaic (D6)
- Blanket Bog (E1.6.1)
- Wet Modified Bog (E1.7)
- Acid Neutral Flush (E2.1)
- Running Water (G2)
- Bare Ground (J4)



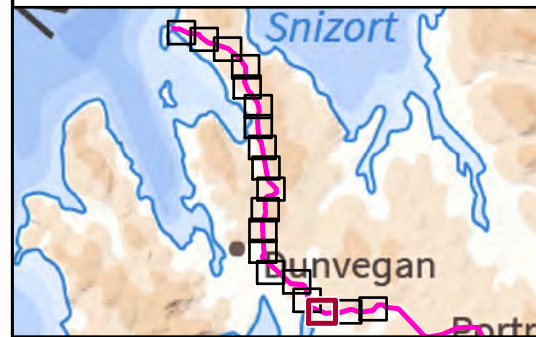
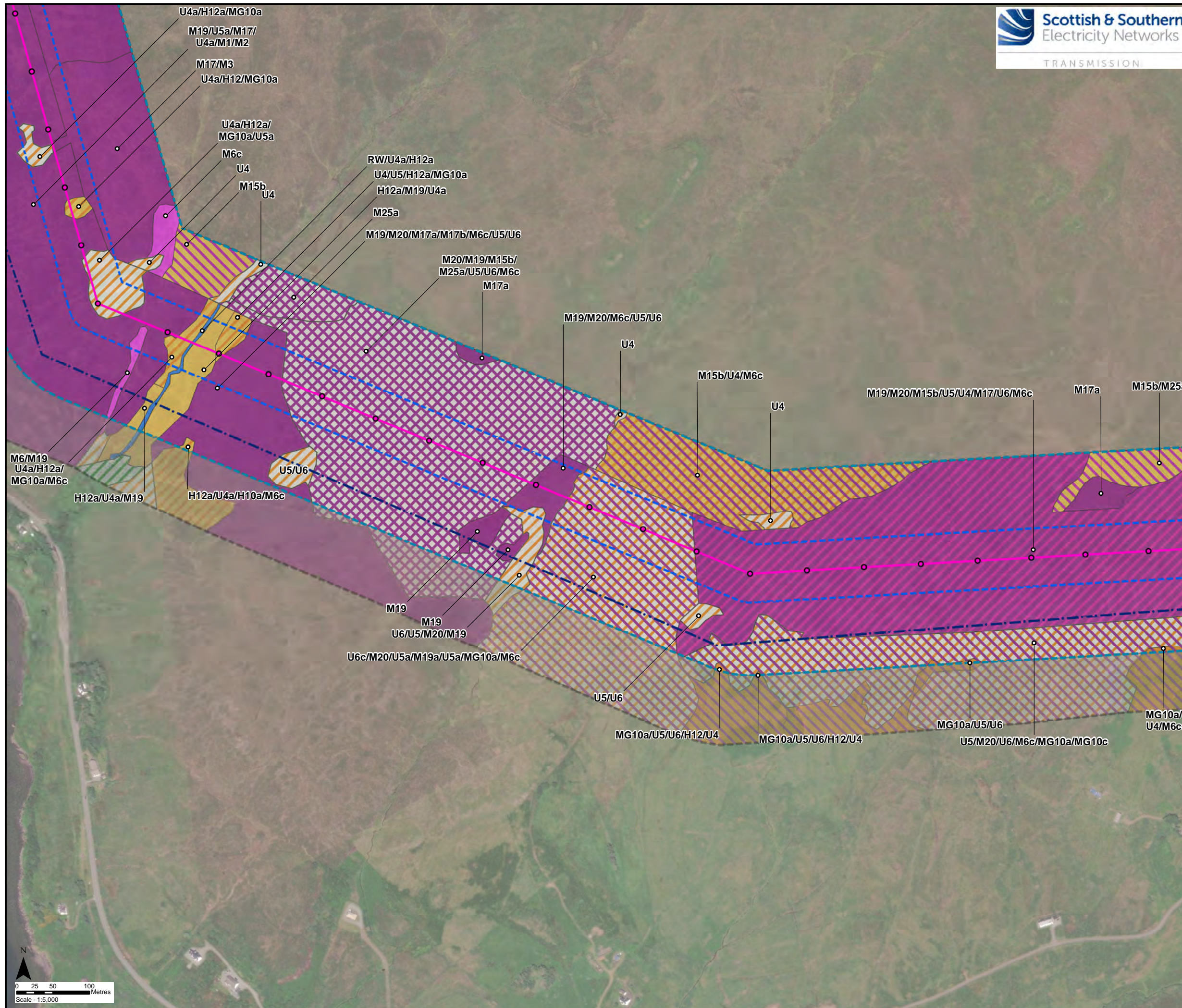
Reproduced by permission of Ordnance Survey on behalf of HMSO. Crown copyright and database right 2022 all rights reserved. Esri, Maxar, GeoEye, Earthstar Geographics, CNES/Airbus DS, USDA, USGS, AeroGRID, IGN, and the GIS User Community

Project No:	LT91
Project:	Skye Reinforcement Project EIA Report
Title:	Figure V2-4.3 (0.16): National Vegetation Classification (NVC) Survey Area and Results
Drawn by:	LNF
Date:	25/08/2022
Drawing:	EIA_V2-4.3_NVC_Sec0_SKYE



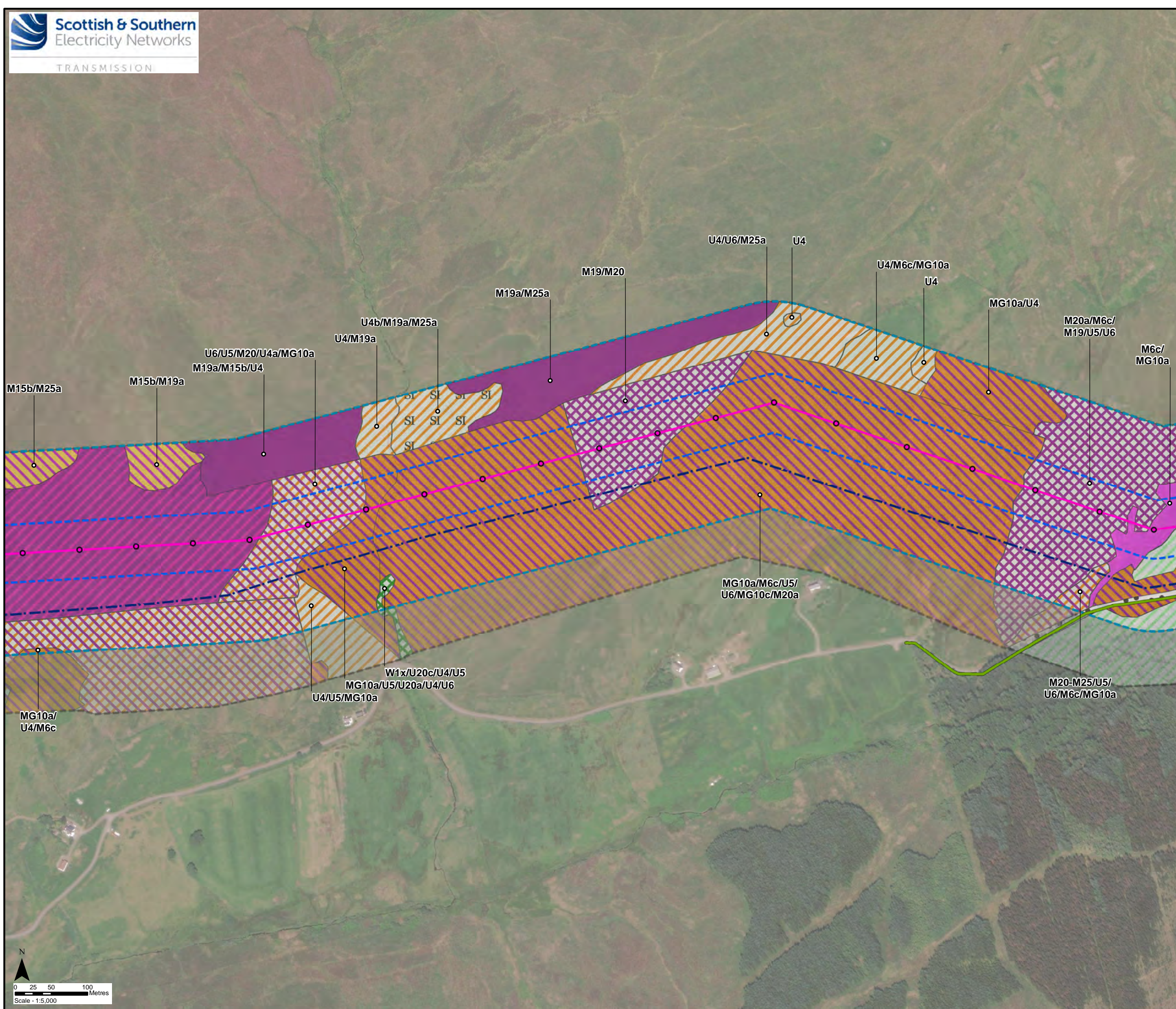
Key

- Proposed Wood Pole (H Pole)
 - Proposed OHL Alignment
 - Existing 132 kV OHL to be dismantled (Wood Pole)
 - Limit of Deviation
 - Survey Area
 - Study Area - NVC Habitat
- Phase 1 Habitat (Code)**
- Unimproved Acid Grassland (B1.1)
 - Unimproved Acid Grassland/Wet Modified Bog Mosaic (B1.1/E1.7)
 - Marsh/Marshy Grassland (B5)
 - Acid Dry Dwarf Shrub Heath (D1.1)
 - Wet Dwarf Shrub Heath (D2)
 - Dry Heath/Acid Grassland Mosaic (D5)
 - Wet Heath/Acid Grassland Mosaic (D6)
 - Blanket Bog (E1.6.1)
 - Blanket Bog/Wet Modified Bog Mosaic (E1.6.1/E1.7)
 - Wet Modified Bog (E1.7)
 - Acid Neutral Flush (E2.1)
 - Running Water (G2)



Reproduced by permission of Ordnance Survey on behalf of HMSO.
 Crown copyright and database right 2022 all rights reserved.
 Esri, Maxar, GeoEye, Earthstar Geographics, CNES/Airbus DS,
 USDA, USGS, AeroGRID, IGN, and the GIS User Community

Project No: LT91	
Project: Skye Reinforcement Project EIA Report	
Title: Figure V2-4.3 (0.17): National Vegetation Classification (NVC) Survey Area and Results	
Drawn by: LNF	25/08/2022
Drawing: EIA_V2-4.3_NVC_Sec0_SKYE	

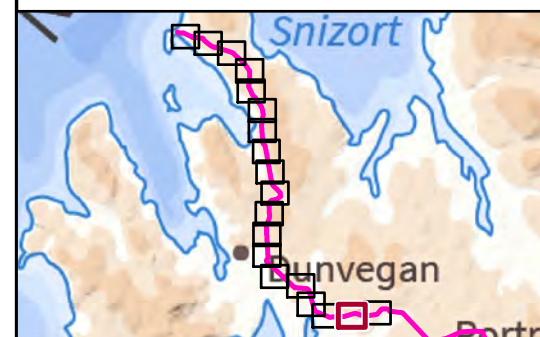


Key

- Proposed Wood Pole (H Pole)
- Proposed OHL Alignment
- Existing 132 kV OHL to be dismantled (Wood Pole)
- Existing Access Track
- Limit of Deviation
- Survey Area
- Study Area - NVC Habitat

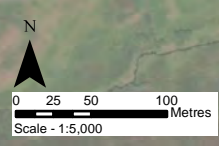
Phase 1 Habitat (Code)

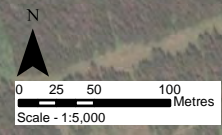
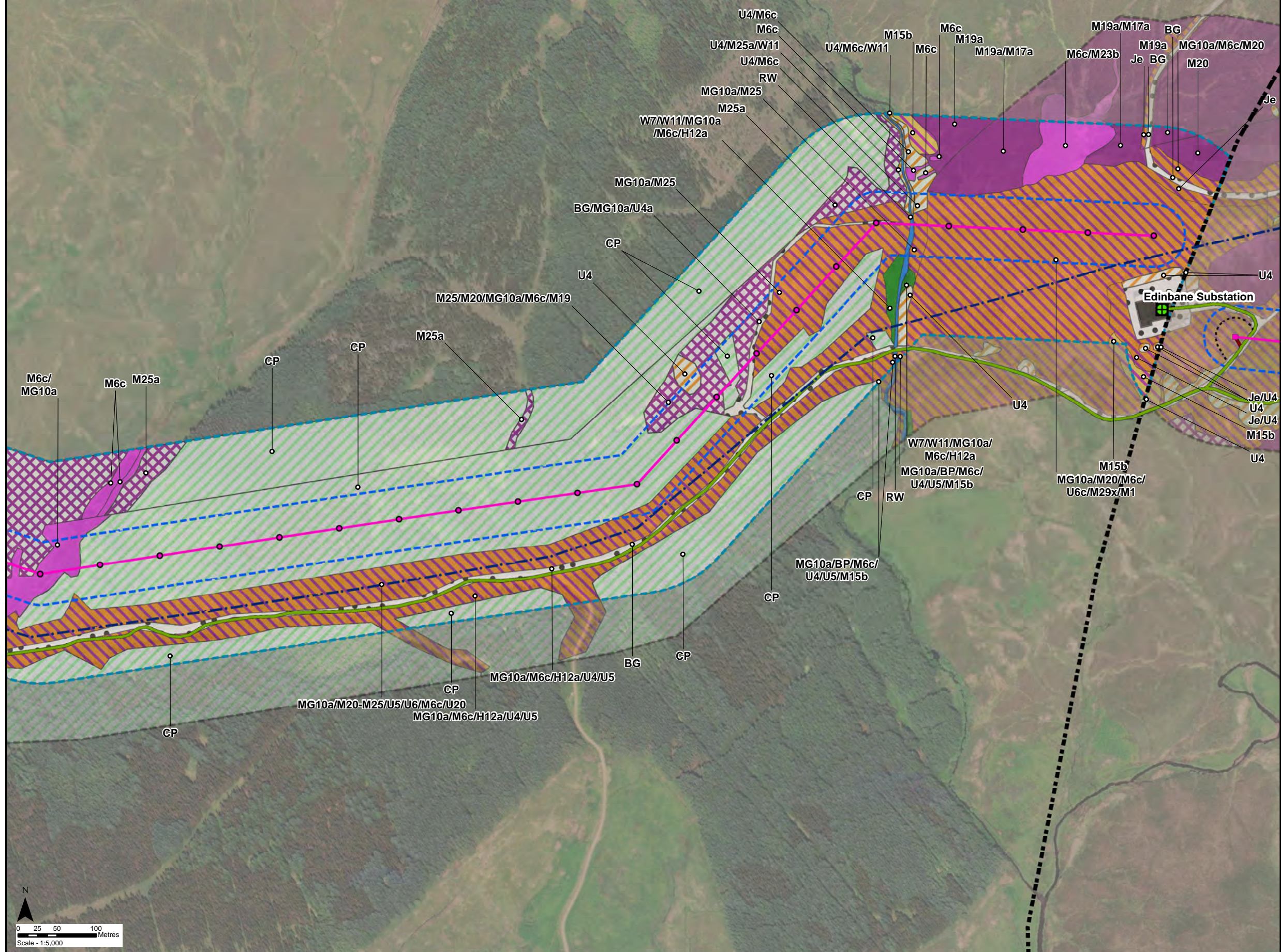
- Coniferous Plantation Woodland (A1.2.2)
- Dense/Continuous Scrub (A2.1)
- Unimproved Acid Grassland (B1.1)
- Unimproved Acid Grassland/Wet Modified Bog Mosaic (B1.1/E1.7)
- Semi-Improved Acid Grassland (B1.2)
- Marsh/Marshy Grassland (B5)
- Wet Dwarf Shrub Heath (D2)
- Blanket Bog (E1.6.1)
- Blanket Bog/Wet Modified Bog Mosaic (E1.6.1/E1.7)
- Wet Modified Bog (E1.7)
- Acid Neutral Flush (E2.1)
- Bare Ground (J4)



Reproduced by permission of Ordnance Survey on behalf of HMSO.
 Crown copyright and database right 2022 all rights reserved.
 Esri, Maxar, GeoEye, Earthstar Geographics, CNES/Airbus DS,
 USDA, USGS, AeroGRID, IGN, and the GIS User Community

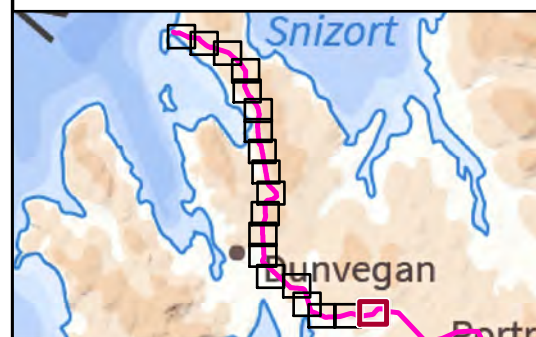
Project No:	LT91
Project:	Skye Reinforcement Project EIA Report
Title:	Figure V2-4.3 (0.18): National Vegetation Classification (NVC) Survey Area and Results
Drawn by:	LNF 25/08/2022
Drawing:	EIA_V2-4.3_NVC_Sec0_SKYE





Key

- Proposed Wood Pole (H Pole)
- Proposed Steel Lattice Tower
- Proposed OHL Alignment
- - - Existing 132 kV OHL to be dismantled (Wood Pole)
- Existing Access Track
- New Temporary Spur to Towers
- - - Section Divide
- Existing Substation to be Extended (separate application)
- Limit of Deviation
- Limit of Deviation (Access)
- Survey Area
- Study Area - NVC Habitat
- Phase 1 Habitat (Code)**
- Broad-Leaved Semi-Natural Woodland (A1.1.1)
- Coniferous Plantation Woodland (A1.2.2)
- Unimproved Acid Grassland (B1.1)
- Marsh/Marshy Grassland (B5)
- Wet Dwarf Shrub Heath (D2)
- Blanket Bog (E1.6.1)
- Wet Modified Bog (E1.7)
- Acid Neutral Flush (E2.1)
- Running Water (G2)
- Building (J3.6)
- Bare Ground (J4)



Reproduced by permission of Ordnance Survey on behalf of HMSO. Crown copyright and database right 2022 all rights reserved. Esri, Maxar, GeoEye, Earthstar Geographics, CNES/Airbus DS, USDA, USGS, AeroGRID, IGN, and the GIS User Community

Project No: LT91
 Project: Skye Reinforcement Project
 EIA Report

Title: Figure V2-4.3 (0.19):
 National Vegetation Classification
 (NVC) Survey Area and Results

Drawn by: LNF 25/08/2022

Drawing: EIA_V2-4.3_NVC_Sec0_SKYE