

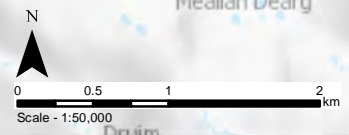
Key

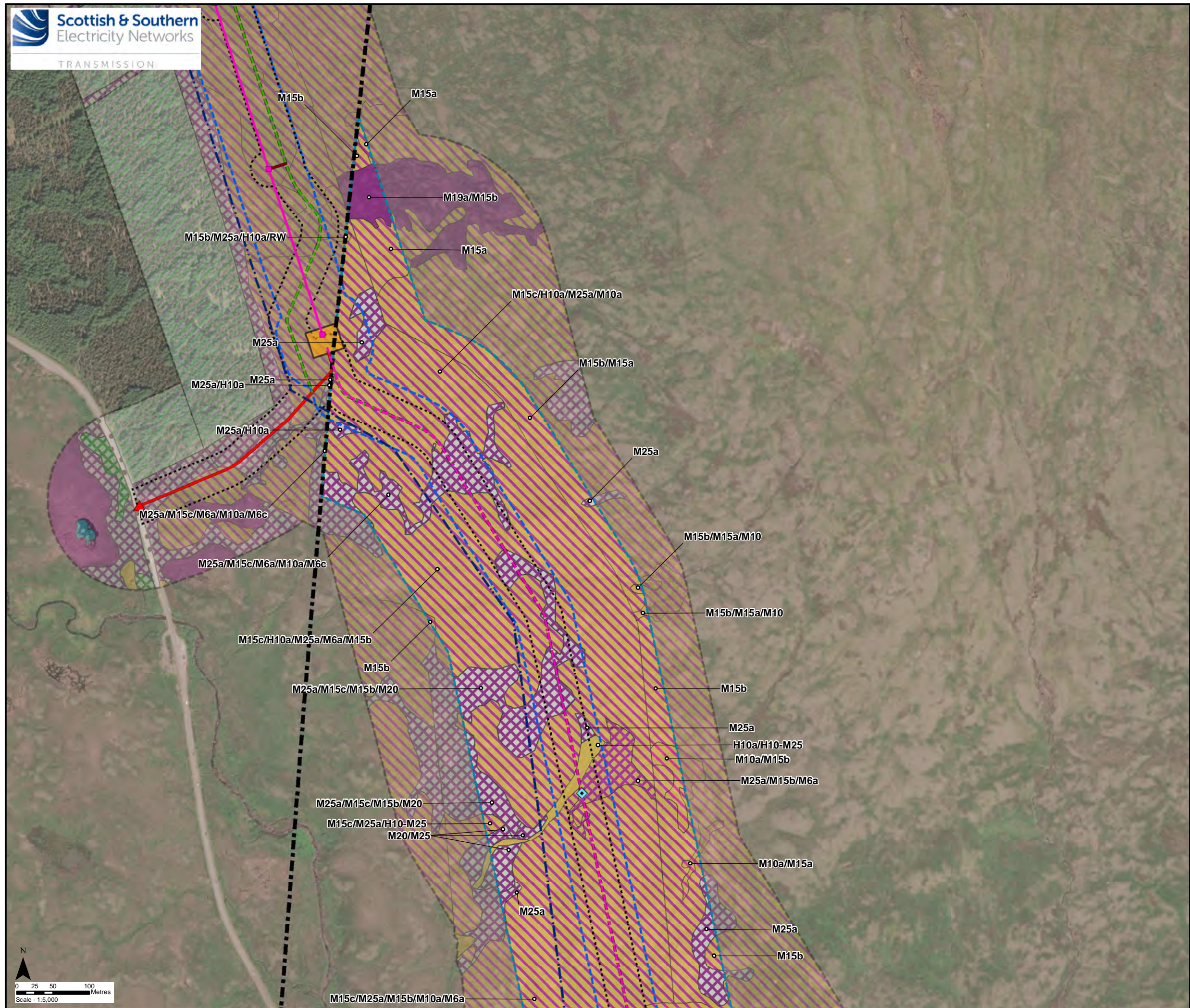
- Proposed OHL Alignment
- - - Proposed Underground Cable
- Study Area - NVC Habitat
- Section 2 Tile Extent



Reproduced by permission of Ordnance Survey on behalf of HMSO.
Crown copyright and database right 2022 all rights reserved.
Contains OS data © Crown Copyright and database right 2020
Contains OS data © Crown Copyright and database right 2019

Project No:	LT91
Project:	Skye Reinforcement Project EIA Report
Title:	Figure V2-4.3 (2.00): National Vegetation Classification (NVC) Survey Area and Results
Drawn by:	LM 31/08/2022
Drawing:	EIA_V2-4.3_NVC_Sec2_Tile0_SKYE



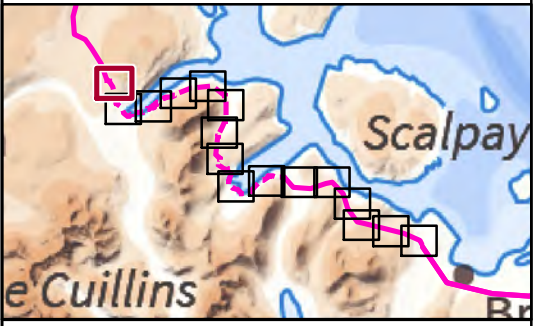
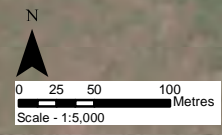


Key

- Proposed Steel Lattice Tower
- Proposed OHL Alignment
- - - Proposed Underground Cable
- - - Existing 132 kV OHL to be dismantled (Wood Pole)
- New Permanent Access Track (construction type to be determined)
- - - New Temporary Access Track
- New Temporary Spur to Towers
- - - Section Divide
- ◊ Indicative Cable Link Box
- ▲ New Bellmouth
- Sealing End Compound
- Limit of Deviation
- Limit of Deviation (Access)
- Survey Area
- Study Area - NVC Habitat

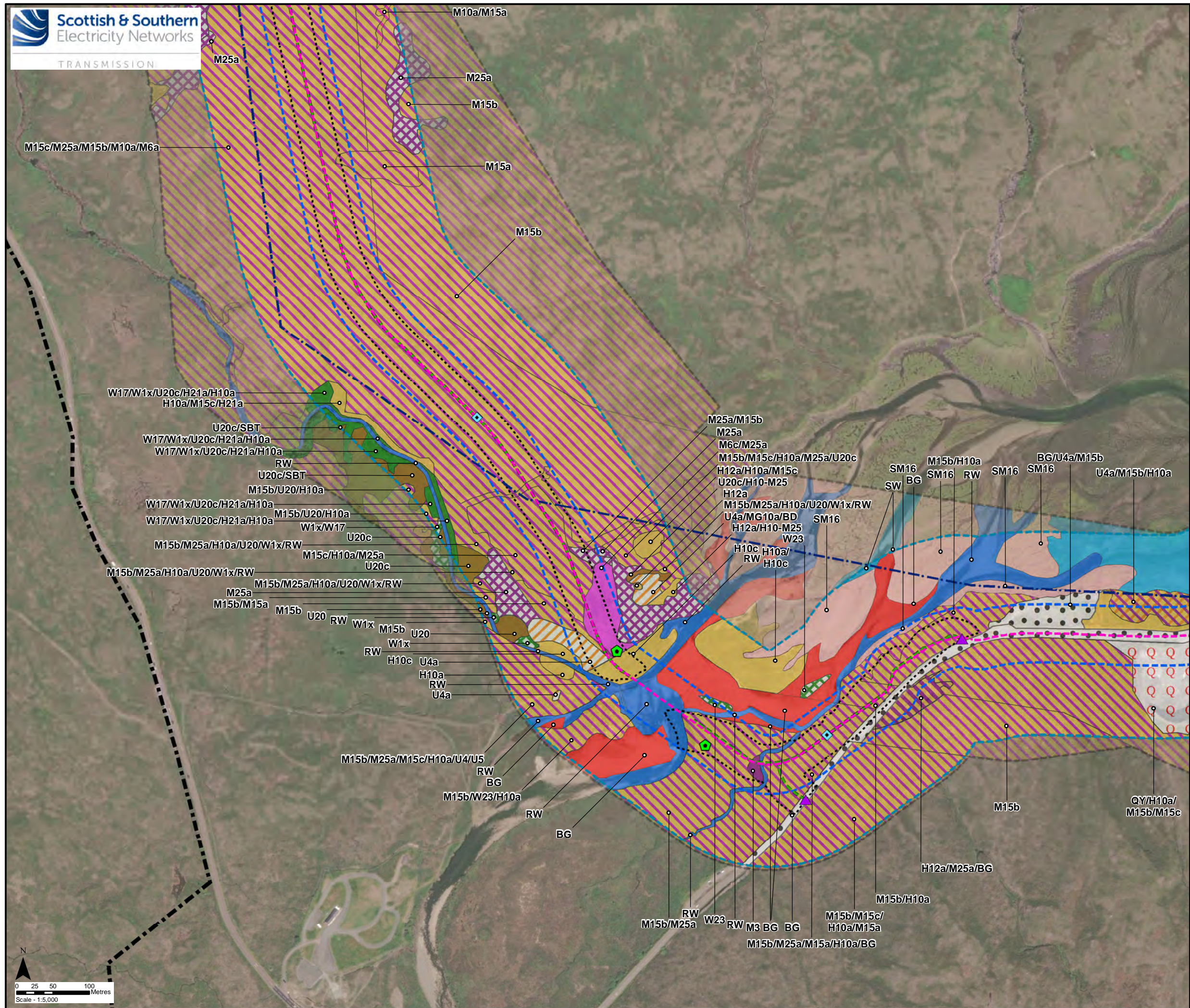
Phase 1 Habitat (Code)

- Acid Dry Dwarf Shrub Heath (D1.1)
- Wet Dwarf Shrub Heath (D2)
- Wet Dwarf Shrub Heath/Wet Modified Bog Mosaic (D2/E1.7)
- Wet Dwarf Shrub Heath/Basic Flush (D2/E2.2)
- Blanket Bog (E1.6.1)
- Wet Modified Bog (E1.7)



Reproduced by permission of Ordnance Survey on behalf of HMSO.
 Crown copyright and database right 2022 all rights reserved.
 Esri, Maxar, GeoEye, Earthstar Geographics, CNES/Airbus DS,
 USDA, USGS, AeroGRID, IGN, and the GIS User Community

Project No: LT91	
Project:	Skye Reinforcement Project EIA Report
Title:	Figure V2-4.3 (2.01): National Vegetation Classification (NVC) Survey Area and Results
Drawn by:	LNF 31/08/2022
Drawing:	EIA_V2-4.3_NVC_Sec2_SKYE

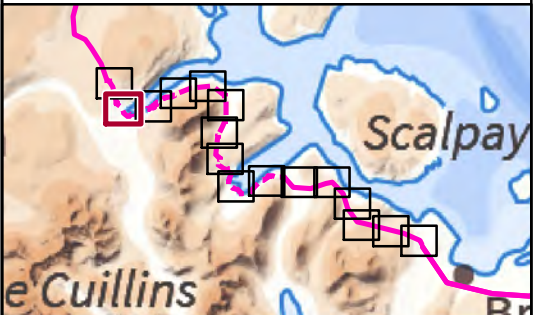


Key

- Proposed Underground Cable
- Existing 132 kV OHL to be dismantled (Wood Pole)
- New Temporary Access Track
- Section Divide
- ◇ Indicative Cable Link Box
- ◇ Horizontal Directional Drill (HDD) Crossing - Indicative
- ▲ Temporary Bellmouth
- Limit of Deviation
- Limit of Deviation (Access)
- Survey Area
- Study Area - NVC Habitat

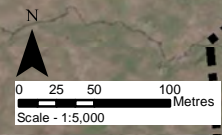
Phase 1 Habitat (Code)

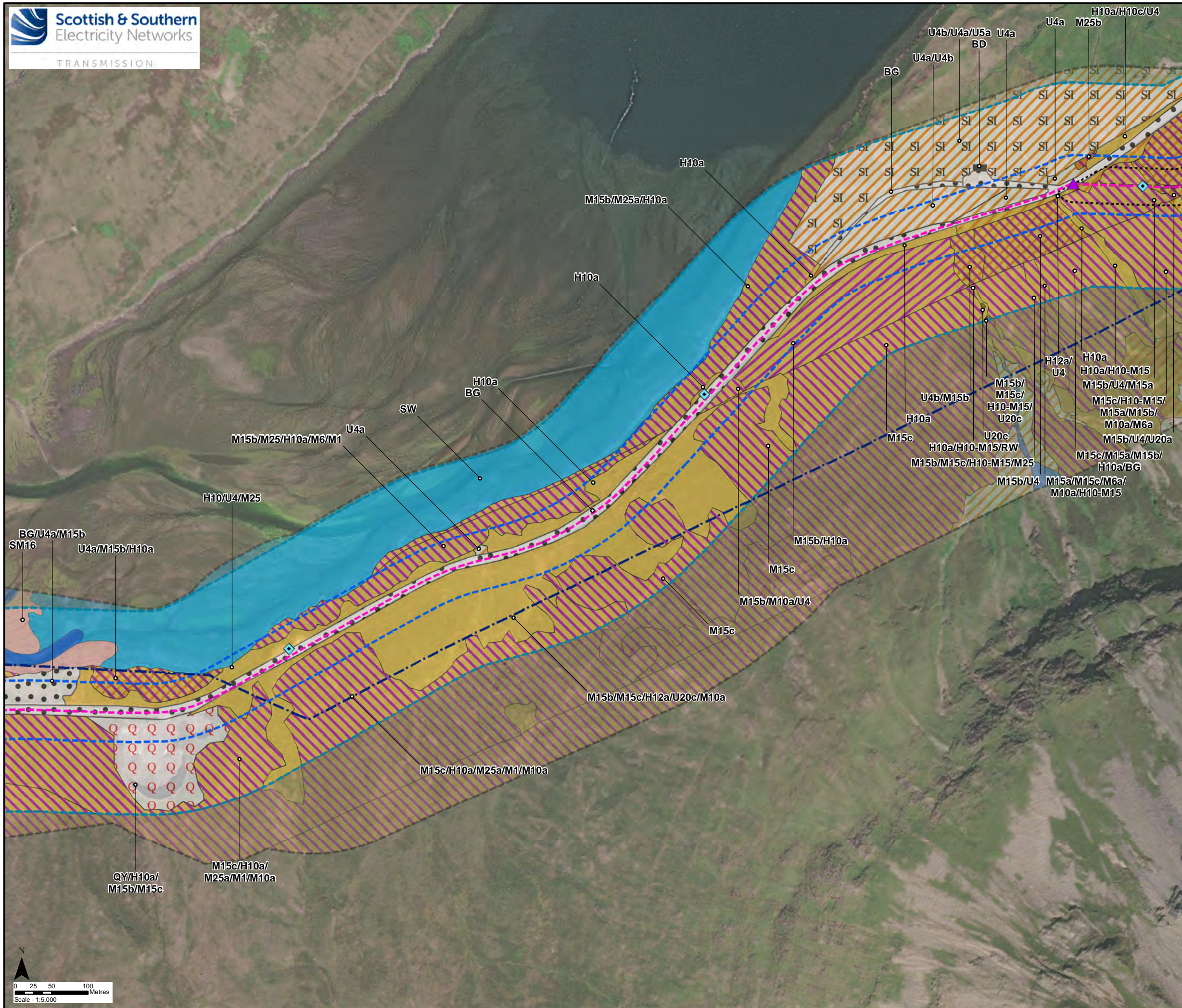
- Broad-Leaved Semi-Natural Woodland (A1.1.1)
- Dense/Continuous Scrub (A2.1)
- Unimproved Acid Grassland (B1.1)
- Continuous Bracken (C1.1)
- Acid Dry Dwarf Shrub Heath (D1.1)
- Acid Dry Dwarf Shrub Heath/Wet Modified Bog Mosaic (D1.1/E1.7)
- Wet Dwarf Shrub Heath (D2)
- Wet Dwarf Shrub Heath/Basic Flush (D2/E2.2)
- Wet Heath/Acid Grassland Mosaic (D6)
- Blanket Bog (E1.6.1)
- Wet Modified Bog (E1.7)
- Acid Neutral Flush (E2.1)
- Standing Water (G1)
- Running Water (G2)
- Dense Continuous Saltmarsh (H2.6)
- Acid/Neutral Exposure (1.4.1)
- Quarry (I2.1)
- Bare Ground (J4)



Reproduced by permission of Ordnance Survey on behalf of HMSO.
 Crown copyright and database right 2022 all rights reserved.
 Esri, Maxar, GeoEye, Earthstar Geographics, CNES/Airbus DS,
 USDA, USGS, AeroGRID, IGN, and the GIS User Community

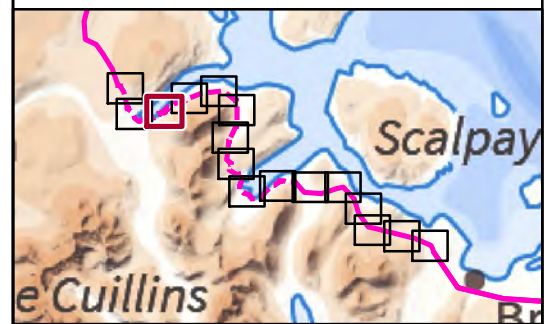
Project No: LT91	
Project: Skye Reinforcement Project EIA Report	
Title: Figure V2-4.3 (2.02): National Vegetation Classification (NVC) Survey Area and Results	
Drawn by: LNF	31/08/2022
Drawing: EIA_V2-4.3_NVC_Sec2_SKYE	





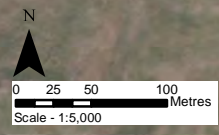
Key

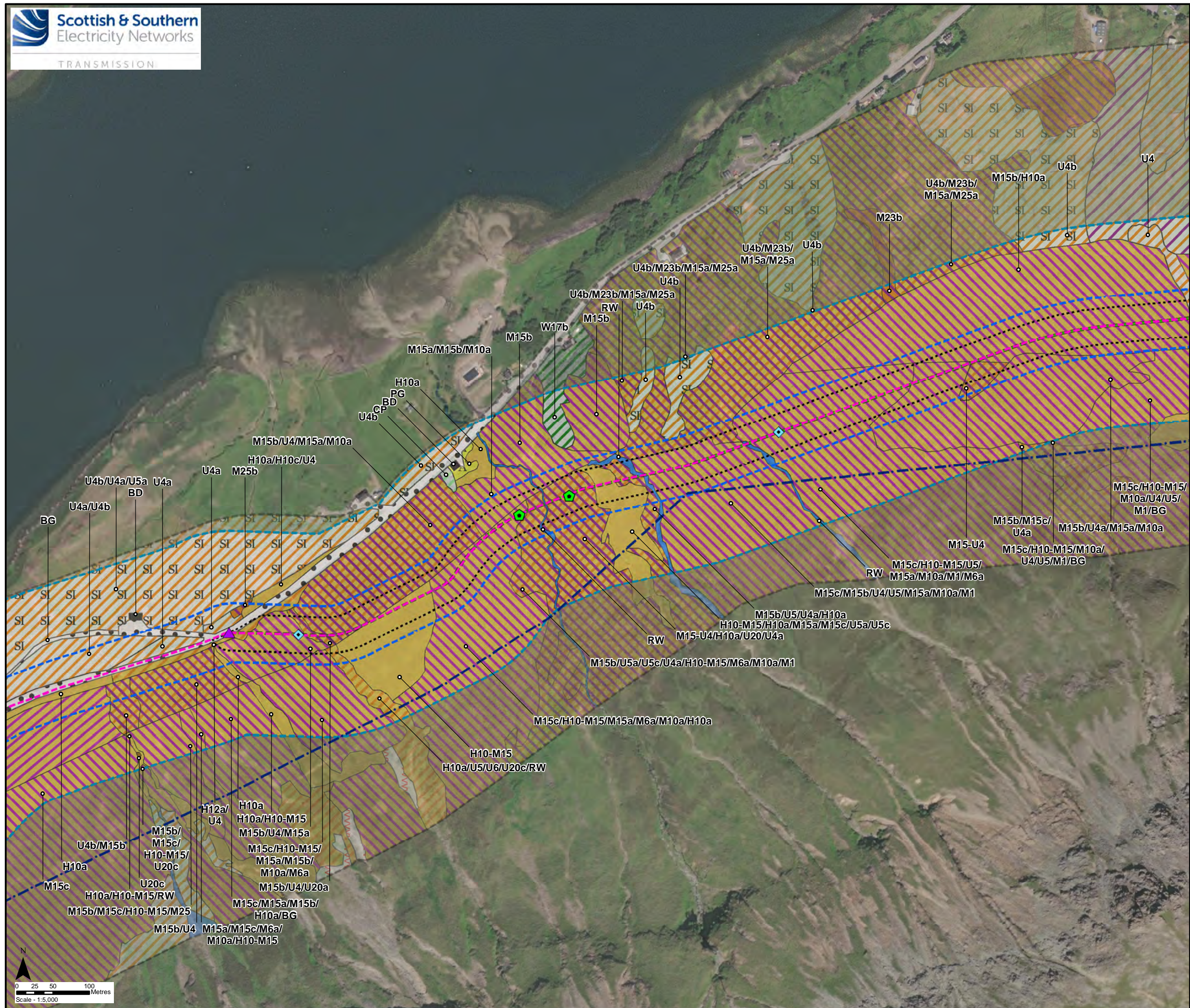
- Proposed Underground Cable
 - Existing 132 kV OHL to be dismantled (Wood Pole)
 - New Temporary Access Track
 - ◆ Indicative Cable Link Box
 - ▲ Temporary Bellmouth
 - Limit of Deviation
 - Limit of Deviation (Access)
 - Survey Area
 - Study Area - NVC Habitat
- Phase 1 Habitat (Code)**
- Unimproved Acid Grassland (B1.1)
 - Semi-Improved Acid Grassland (B1.2)
 - Marsh/Marshy Grassland (B5)
 - Continuous Bracken (C1.1)
 - Acid Dry Dwarf Shrub Heath (D1.1)
 - Acid Dry Dwarf Shrub Heath/Wet Dwarf Shrub Heath Mosaic (D1.1/D2)
 - Wet Dwarf Shrub Heath (D2)
 - Dry Heath/Acid Grassland Mosaic (D5)
 - Wet Heath/Acid Grassland Mosaic (D6)
 - Standing Water (G1)
 - Running Water (G2)
 - Dense Continuous Saltmarsh (H2.6)
 - Q Quarry (I2.1)
 - Building (J3.6)
 - Bare Ground (J4)



Reproduced by permission of Ordnance Survey on behalf of HMSO.
 Crown copyright and database right 2022 all rights reserved.
 Esri, Maxar, GeoEye, Earthstar Geographics, CNES/Airbus DS,
 USDA, USGS, AeroGRID, IGN, and the GIS User Community

Project No:	LT91	
Project:	Skye Reinforcement Project EIA Report	
Title:	Figure V2-4.3 (2.03): National Vegetation Classification (NVC) Survey Area and Results	
Drawn by:	LNF	31/08/2022
Drawing:	EIA_V2-4.3_NVC_Sec2_SKYE	



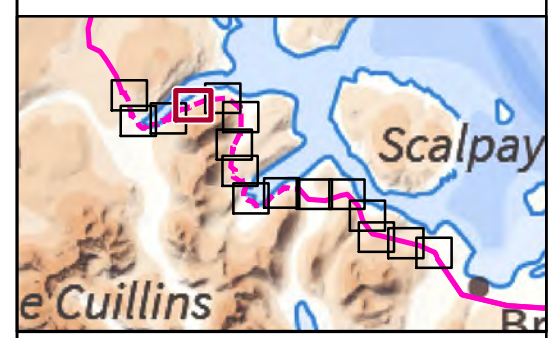


Key

- Proposed Underground Cable
- Existing 132 kV OHL to be dismantled (Wood Pole)
- New Temporary Access Track
- ◆ Indicative Cable Link Box
- ◆ Horizontal Directional Drill (HDD) Crossing - Indicative
- ▲ Temporary Bellmouth
- Limit of Deviation
- Limit of Deviation (Access)
- Survey Area
- Study Area - NVC Habitat

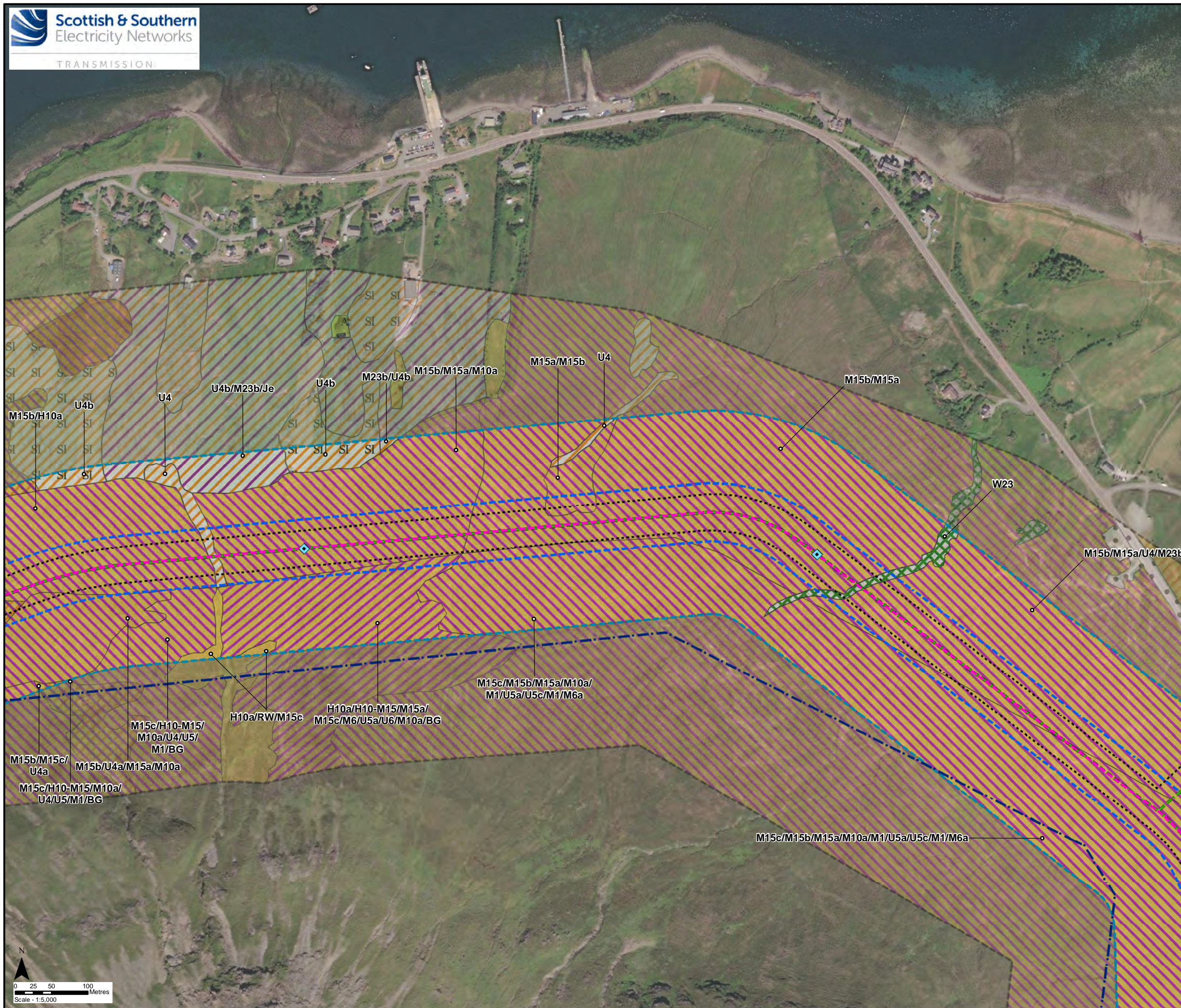
Phase 1 Habitat (Code)

- Broad-Leaved Plantation Woodland (A1.1.2)
- Coniferous Plantation Woodland (A1.2.2)
- Unimproved Acid Grassland (B1.1)
- Unimproved Acid Grassland/ Marsh/Marshy Grassland Mosaic (B1.1/B5)
- Semi-Improved Acid Grassland (B1.2)
- Marsh/Marshy Grassland (B5)
- Continuous Bracken (C1.1)
- Acid Dry Dwarf Shrub Heath (D1.1)
- Acid Dry Dwarf Shrub Heath/Wet Dwarf Shrub Heath Mosaic (D1.1/D2)
- Wet Dwarf Shrub Heath (D2)
- Dry Heath/Acid Grassland Mosaic (D5)
- Wet Heath/Acid Grassland Mosaic (D6)
- Running Water (G2)
- Amenty Grassland (J1.2)
- Building (J3.6)
- Bare Ground (J4)



Reproduced by permission of Ordnance Survey on behalf of HMSO. Crown copyright and database right 2022 all rights reserved. Esri, Maxar, GeoEye, Earthstar Geographics, CNES/Airbus DS, USDA, USGS, AeroGRID, IGN, and the GIS User Community

Project No:	LT91
Project:	Skye Reinforcement Project EIA Report
Title:	Figure V2-4.3 (2.04): National Vegetation Classification (NVC) Survey Area and Results
Drawn by:	LNF
	31/08/2022
Drawing:	EIA_V2-4.3_NVC_Sec2_SKYE

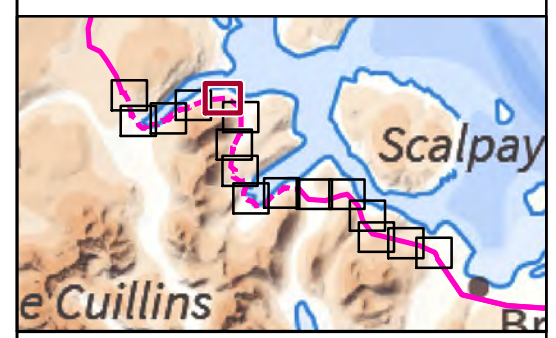


Key

- Proposed Underground Cable
- Existing 132 kV OHL to be dismantled (Wood Pole)
- New Temporary Access Track
- ◆ Indicative Cable Link Box
- Limit of Deviation
- Limit of Deviation (Access)
- Survey Area
- Study Area - NVC Habitat

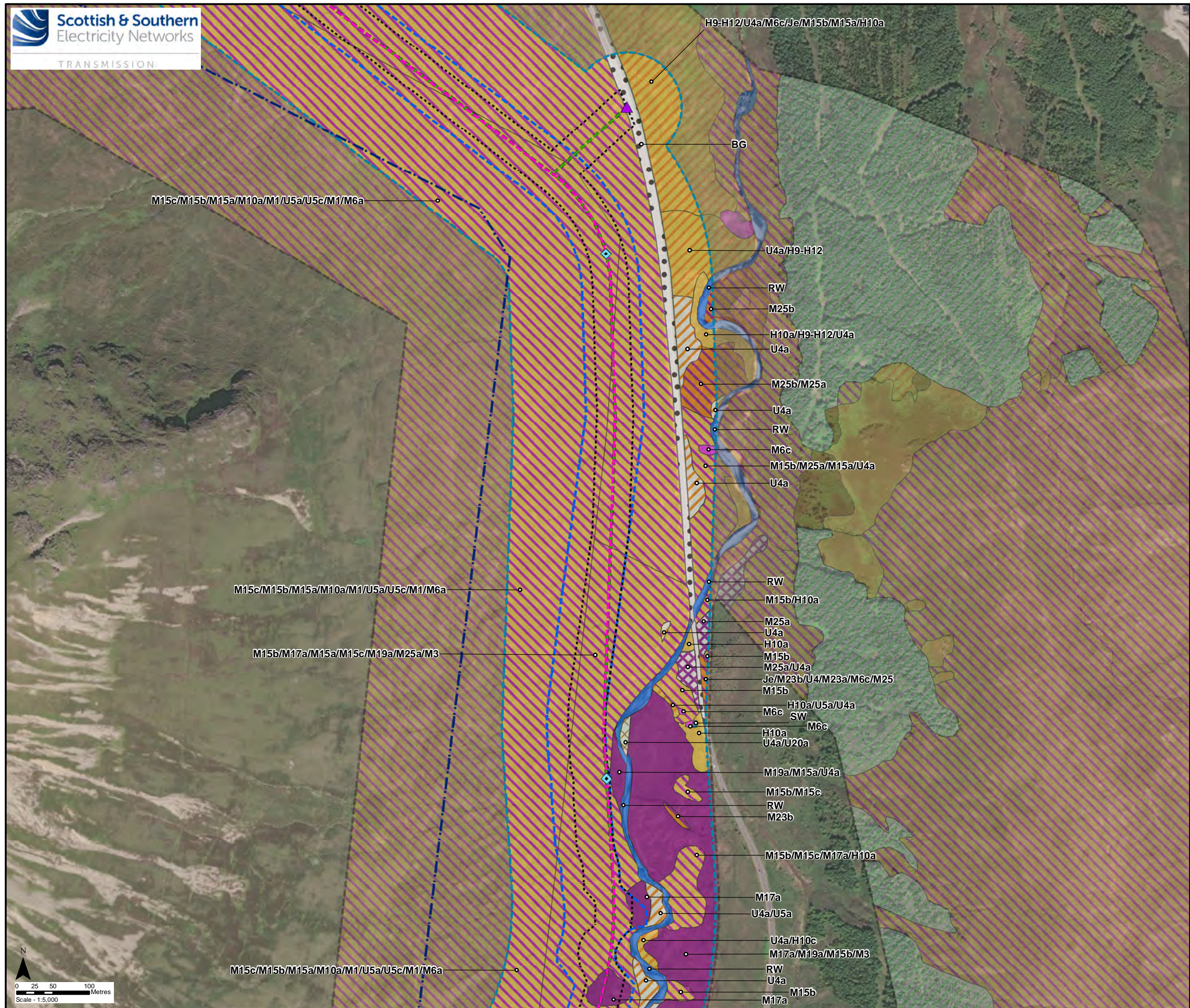
Phase 1 Habitat (Code)

- Dense/Continuous Scrub (A2.1)
- Unimproved Acid Grassland (B1.1)
- Unimproved Acid Grassland/ Marsh/Marshy Grassland Mosaic (B1.1/B5)
- Semi-Improved Acid Grassland (B1.2)
- Acid Dry Dwarf Shrub Heath (D1.1)
- Acid Dry Dwarf Shrub Heath/Wet Dwarf Shrub Heath Mosaic (D1.1/D2)
- Wet Dwarf Shrub Heath (D2)
- Wet Heath/Acid Grassland Mosaic (D6)



Reproduced by permission of Ordnance Survey on behalf of HMSO.
 Crown copyright and database right 2022 all rights reserved.
 Esri, Maxar, GeoEye, Earthstar Geographics, CNES/Airbus DS,
 USDA, USGS, AeroGRID, IGN, and the GIS User Community

Project No:	LT91
Project:	Skye Reinforcement Project EIA Report
Title:	Figure V2-4.3 (2.05): National Vegetation Classification (NVC) Survey Area and Results
Drawn by:	LNF
	31/08/2022
Drawing:	EIA_V2-4.3_NVC_Sec2_SKYE

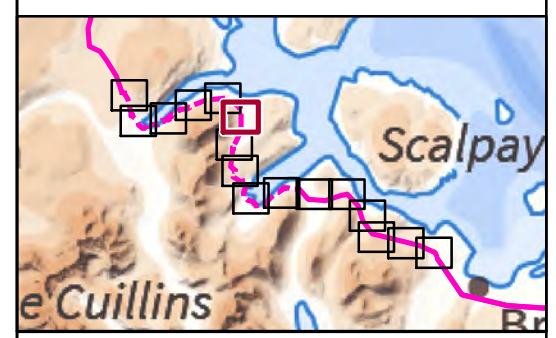


Key

- Proposed Underground Cable
- Existing 132 kV OHL to be dismantled (Wood Pole)
- New Temporary Access Track
- ◆ Indicative Cable Link Box
- ▲ Temporary Bellmouth
- Limit of Deviation
- Limit of Deviation (Access)
- Survey Area
- Study Area - NVC Habitat

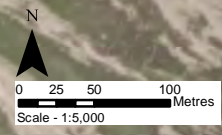
Phase 1 Habitat (Code)

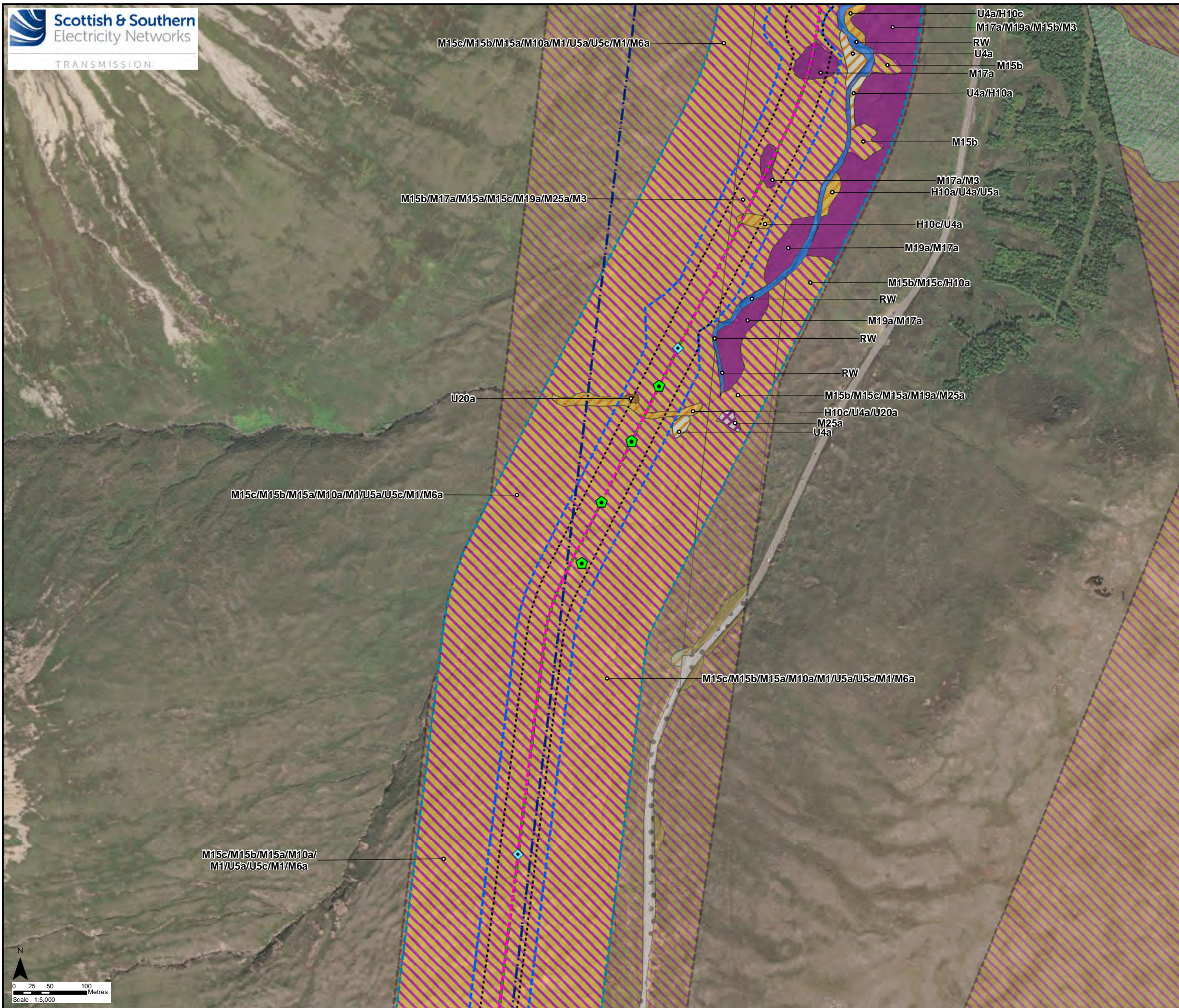
- Unimproved Acid Grassland (B1.1)
- Marsh/Marshy Grassland (B5)
- Scattered Bracken (C1.2)
- Acid Dry Dwarf Shrub Heath (D1.1)
- Wet Dwarf Shrub Heath (D2)
- Dry Heath/Acid Grassland Mosaic (D5)
- Blanket Bog (E1.6.1)
- Wet Modified Bog (E1.7)
- Acid Neutral Flush (E2.1)
- Standing Water (G1)
- Running Water (G2)
- Bare Ground (J4)



Reproduced by permission of Ordnance Survey on behalf of HMSO.
 Crown copyright and database right 2022 all rights reserved.
 Esri, Maxar, GeoEye, Earthstar Geographics, CNES/Airbus DS,
 USDA, USGS, AeroGRID, IGN, and the GIS User Community

Project No:	LT91
Project:	Skye Reinforcement Project EIA Report
Title:	Figure V2-4.3 (2.06): National Vegetation Classification (NVC) Survey Area and Results
Drawn by:	LNF
	31/08/2022
Drawing:	EIA_V2-4.3_NVC_Sec2_SKYE



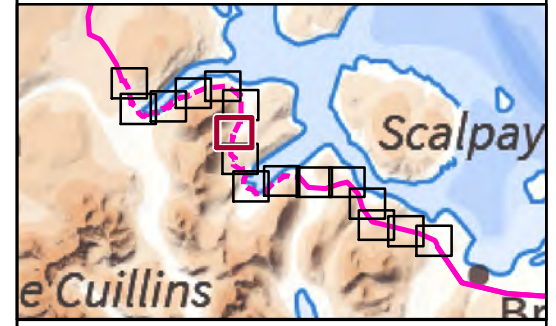
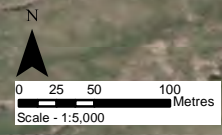


Key

- Proposed Underground Cable
- Existing 132 kV OHL to be dismantled (Wood Pole)
- New Temporary Access Track
- ◆ Indicative Cable Link Box
- ◆ Horizontal Directional Drill (HDD) Crossing - Indicative
- Limit of Deviation
- Limit of Deviation (Access)
- Survey Area
- Study Area - NVC Habitat

Phase 1 Habitat (Code)

- Unimproved Acid Grassland (B1.1)
- Continuous Bracken (C1.1)
- Wet Dwarf Shrub Heath (D2)
- Dry Heath/Acid Grassland Mosaic (D5)
- Blanket Bog (E1.6.1)
- Wet Modified Bog (E1.7)
- Running Water (G2)



Reproduced by permission of Ordnance Survey on behalf of HMSO.
 Crown copyright and database right 2022 all rights reserved.
 Esri, Maxar, GeoEye, Earthstar Geographics, CNES/Airbus DS,
 USDA, USGS, AeroGRID, IGN, and the GIS User Community

Project No:	LT91
Project:	Skye Reinforcement Project EIA Report
Title:	Figure V2-4.3 (2.07): National Vegetation Classification (NVC) Survey Area and Results
Drawn by:	LNF
	31/08/2022
Drawing:	EIA_V2-4.3_NVC_Sec2_SKYE

M15c/M15b/M15a/M10a/
M1/U5a/U5c/M1/M6a

M15c/M15b/M15a/M10a/
M1/U5a/U5c/M1/M6a

BG

M17a/M3

M15c/M15b/M15a/M10a/
M1/U5a/U5c/M1/M6a

M17a

BG

M25a

M17a/M19a

M17a/M15b

H10a

M15b/M15a/M17a/M15c

M15b/H10a

RW

H10a

M15b/M15a/M10a/
M25a/H10a

U4

H10a

PG/CP

M15c/M15b/M25a/H10a/BG/M10a

RW

H10a/H10-M15/H21a/M15c

BG

U4

BG

BD

U4b

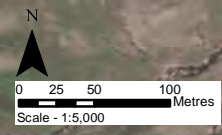
BG

U4b

M23b/U4b

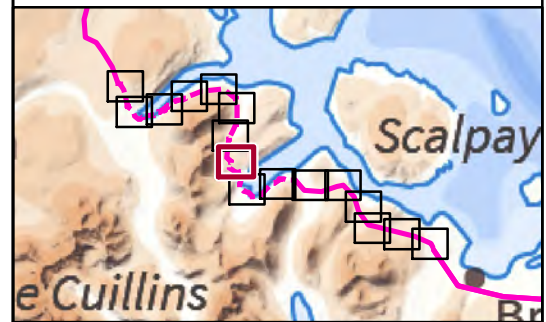
RW

SM16



Key

- Proposed Underground Cable
- Existing 132 kV OHL to be dismantled (Wood Pole)
- New Temporary Access Track
- ◆ Indicative Cable Link Box
- ◆ Horizontal Directional Drill (HDD) Crossing - Indicative
- ▲ Temporary Bellmouth
- Limit of Deviation
- Limit of Deviation (Access)
- Survey Area
- Study Area - NVC Habitat
- Phase 1 Habitat (Code)**
- Unimproved Acid Grassland (B1.1)
- Semi-Improved Acid Grassland (B1.2)
- Marsh/Marshy Grassland (B5)
- Acid Dry Dwarf Shrub Heath (D1.1)
- Wet Dwarf Shrub Heath (D2)
- Blanket Bog (E1.6.1)
- Wet Modified Bog (E1.7)
- Running Water (G2)
- Dense Continuous Saltmarsh (H2.6)
- Amenty Grassland (J1.2)
- Building (J3.6)
- Bare Ground (J4)



Reproduced by permission of Ordnance Survey on behalf of HMSO. Crown copyright and database right 2022 all rights reserved. Esri, Maxar, GeoEye, Earthstar Geographics, CNES/Airbus DS, USDA, USGS, AeroGRID, IGN, and the GIS User Community

Project No: LT91

Project: Skye Reinforcement Project
EIA Report

Title: Figure V2-4.3 (2.08):
National Vegetation Classification
(NVC) Survey Area and Results

Drawn by: LNF 31/08/2022

Drawing: EIA_V2-4.3_NVC_Sec2_SKYE