

2

1

0

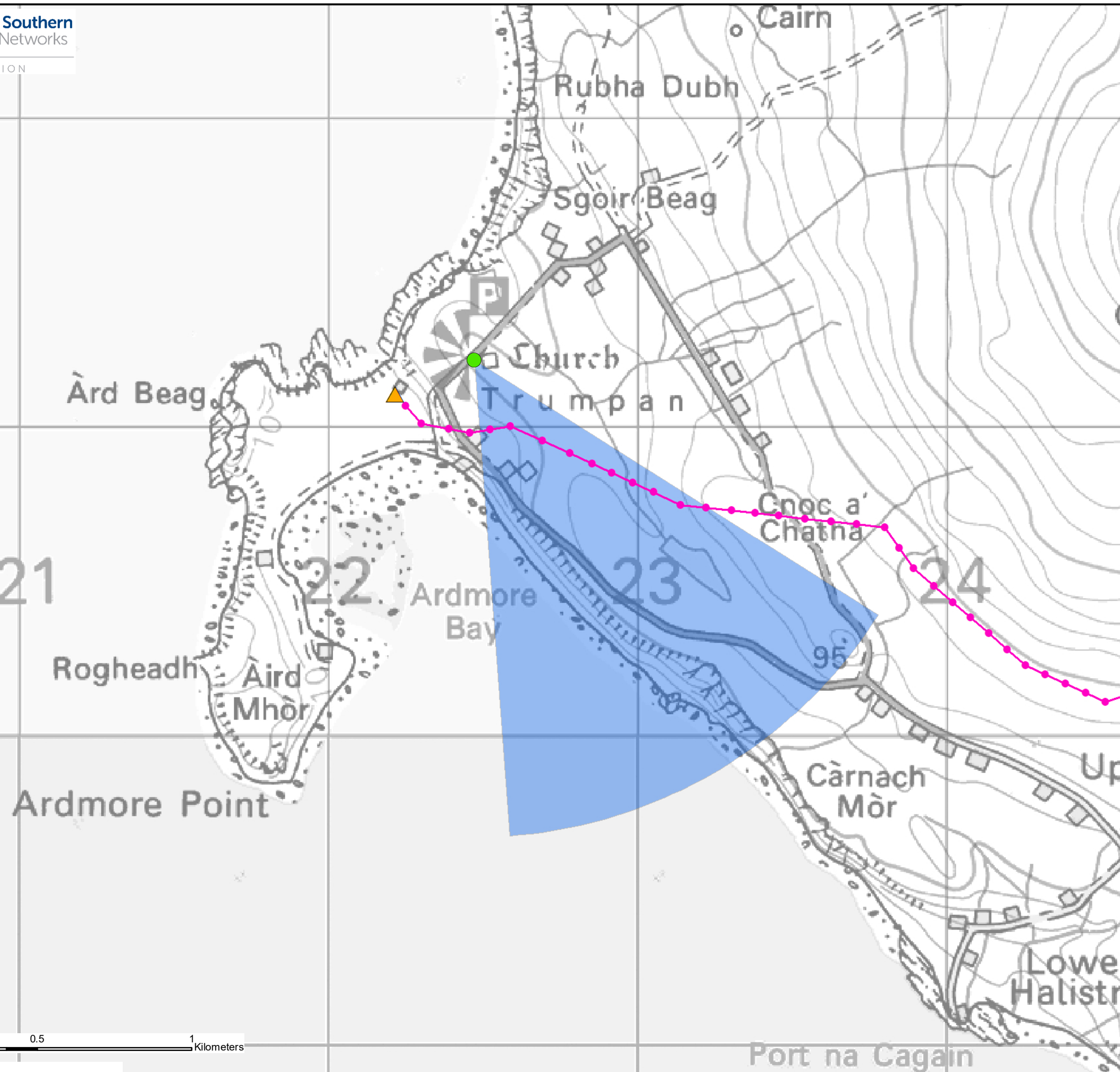
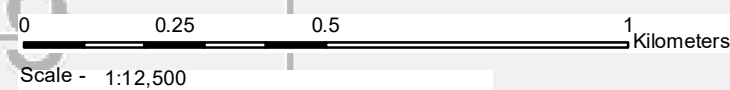
21

22

23

24

Ardmore Point



- Key**
- Proposed OHL Alignment
  - Proposed Wood Pole (H Pole)
  - ▲ Substation
  - Viewpoint (VP)
  - ▶ Direction of View (53.5°)



Tripod Photo

Reproduced by permission of Ordnance Survey on behalf of HMSO.  
 Crown copyright and database right 2022 all rights reserved.  
 Ordnance Survey Licence number EL273236.

Project No: LT91  
 Project: Skye Reinforcement Project  
 EIA Report

Title: Figure V2-8.3-S0a - Visualisation from  
 Trumpan Church and Burial Ground,  
 Viewpoint Location Plan

Drawn by: LV 02/09/2022

Drawing: 119026-D-V2-8.3-S0a-1.0.0





Existing View

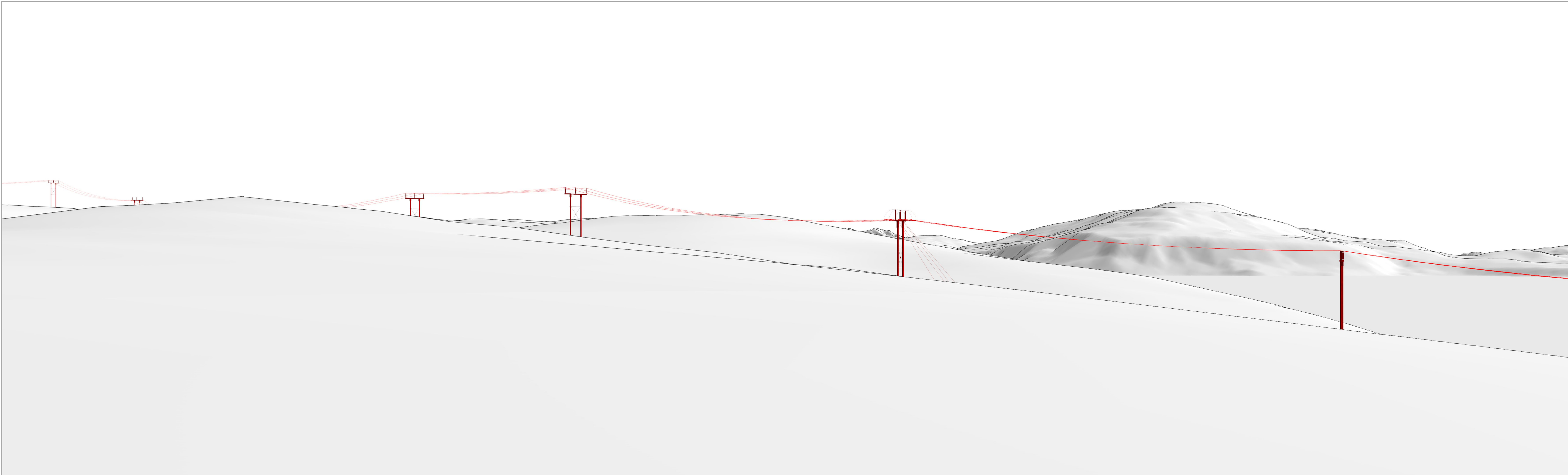
View flat at a comfortable arm's length

Skye Reinforcement Project EIA Report  
 Figure V2 8.3 S0b - Visualisation from Trumpan Church and Burial Ground, Existing View

OS reference:	122473 E 861215 N	Camera:	Sony ILCE 7RM3	Horizontal field of view:	53.5° (planar projection)
Ground level:	52.3 m AOD	Lens:	50mm (DT 50mm f/1.2 SAM)	Principal distance:	812.5 mm
Direction of view:	149°	Camera height:	1.5m AGL	Paper size:	841 x 297 mm (half A1)
Nearest proposed pole:	0.23 km	Date and time:	18/10/2020 17:01	Correct printed image size:	820 x 260 mm







Wireline

View flat at a comfortable arm's length

Skye Reinforcement Project EIA Report

Figure V2 8.3 S0c - Visualisation from Trumpan Church and Burial Ground, Wireline

OS reference:	122473 E 861215 N	Horizontal field of view:	53.5° (planar projection)
Ground level:	52.3 m AOD	Principal distance:	812.5 mm
Direction of view:	149°	Paper size:	841 x 297 mm (half A1)
Nearest proposed pole:	0.23 km	Correct printed image size:	820 x 260 mm



Drawing No. - 119026-D-V2-8.3-S0c-1.0.0 Date - 02.09.2022





Photomontage

View flat at a comfortable arm's length

Skye Reinforcement Project  
 Figure V2 8.3 S0d - Visualisation from Trumpan Church and Burial Ground, Photomontage

OS reference:	122473 E 861215 N	Camera:	Sony ILCE 7RM3	Horizontal field of view:	53.5° (planar projection)
Ground level:	52.3 m AOD	Lens:	50mm (DT 50mm f/1.2 SAM)	Principal distance:	812.5 mm
Direction of view:	149°	Camera height:	1.5m AGL	Paper size:	841 x 297 mm (half A1)
Nearest proposed pole:	0.23 km	Date and time:	18/10/2020 17:01	Correct printed image size:	820 x 260 mm

