

Key

- 2.5km Study Area
- Alternative OHL Alignment
- Alternative Steel Lattice Tower
- Existing Steel Lattice Tower to be Retained
- Existing 132 kV OHL to be dismantled (Steel Lattice)
- Existing Access Track
- Existing Access Track to be Upgraded
- New Permanent Access Track (construction type to be determined)
- New Permanent Access Track (Cut / Fill Construction)
- New Permanent Access Track (Floating Construction)
- New Temporary Access Track
- Zone of Theoretical Visibility (ZTV)

Landscape Assessment

- Local Character Zone (LCZ)

Landscape Character Types (LCT)

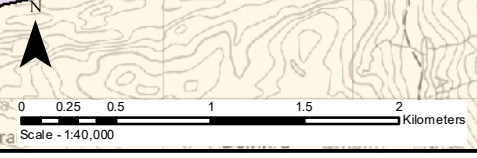
- LCT 357. Farmed and Settled Lowlands - Skye & Lochalsh
- LCT 358. Low Smooth Moorland
- LCT 359. Upland Sloping Moorland
- LCT 360. Stepped Moorland
- LCT 363. Rugged Coastal Hills - Skye & Lochalsh
- LCT 364. Rocky Moorland - Skye & Lochalsh
- LCT 365. Rugged Massif - Skye & Lochalsh
- LCT 367. Smooth Mountain Range

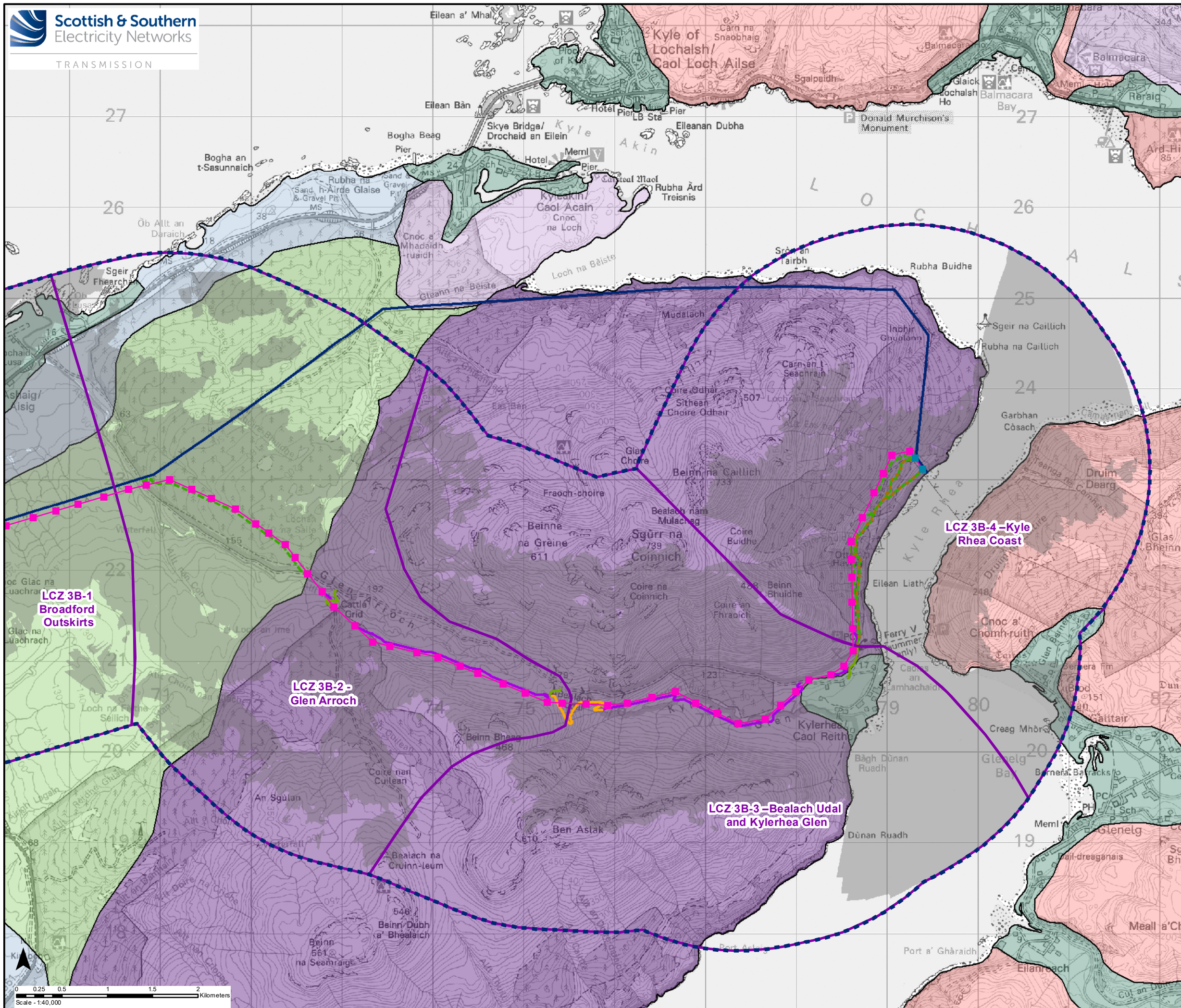
Reproduced by permission of Ordnance Survey on behalf of HMSO.
Crown copyright and database right 2022 all rights reserved.
Ordnance Survey Licence number EL273236.

Project No: LT91
Project: Skye Reinforcement Project
EIA Report

Title: Figure V6-3.3a
Alternative Alignment Landscape
Character

Drawn by: LV 13/09/2022
Drawing: 119026-D-EIA-V6-3.3a-1.0.0





Key

- 2.5km Study Area
- Alternative OHL Alignment
- Alternative Steel Lattice Tower
- Existing Steel Lattice Tower to be Retained
- Existing 132 kV OHL to be dismantled (Steel Lattice)
- Existing Access Track
- Existing Access Track to be Upgraded
- New Permanent Access Track (construction type to be determined)
- New Permanent Access Track (Cut / Fill Construction)
- New Permanent Access Track (Floating Construction)
- New Temporary Access Track
- Zone of Theoretical Visibility (ZTV)

Landscape Assessment

- Local Character Zone (LCZ)

Landscape Character Types (LCT)

- LCT 357. Farmed and Settled Lowlands - Skye & Lochalsh
- LCT 358. Low Smooth Moorland
- LCT 359. Upland Sloping Moorland
- LCT 360. Stepped Moorland
- LCT 363. Rugged Coastal Hills - Skye & Lochalsh
- LCT 364. Rocky Moorland - Skye & Lochalsh
- LCT 365. Rugged Massif - Skye & Lochalsh
- LCT 367. Smooth Mountain Range

Reproduced by permission of Ordnance Survey on behalf of HMSO.
Crown copyright and database right 2022 all rights reserved.
Ordnance Survey Licence number EL273236.

Project No: LT91
Project: Skye Reinforcement Project
EIA Report

Title: Figure V6-3.3b
Alternative Alignment Landscape
Character

Drawn by: LV 13/09/2022

Drawing: 119026-D-EIA-V6-3.3b-1.0.0