

Legend

- Alternative OHL Alignment
- 1km Study Area

Superficial Aquifers

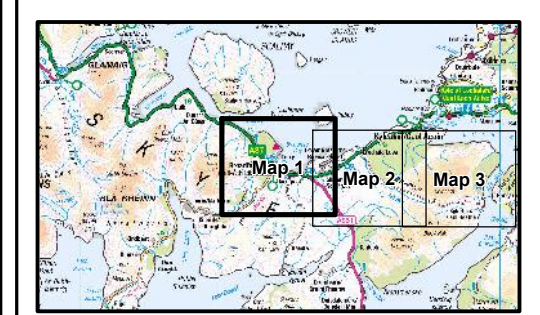
- Intergranular Flow: Moderate to High Productivity
- Not a significant aquifer

Bedrock Aquifers

- Intergranular & Fracture Flow; Moderate Productivity
- Fracture Flow; Low Productivity
- Fracture Flow; Very Low Productivity

Groundwater Vulnerability in the Uppermost Aquifer Vulnerability Class

- 5. Vulnerable to most pollutants, with rapid impact in many scenarios.
- 4a. Vulnerable to those pollutants not readily adsorbed or transformed. Less likely to have clay present in superficial deposits (therefore generally higher vulnerability than 4b).
- 4b. Vulnerable to those pollutants not readily adsorbed or transformed. More likely to have clay present in superficial deposits (therefore generally lower vulnerability than 4a).



Scale - 1:50,000 @ A3

Reproduced by permission of Ordnance Survey on behalf of HMSO. Crown copyright and database right 2022 all rights reserved. Ordnance Survey Licence number EL273236. Contains British Geological Survey Materials © NERC 2022

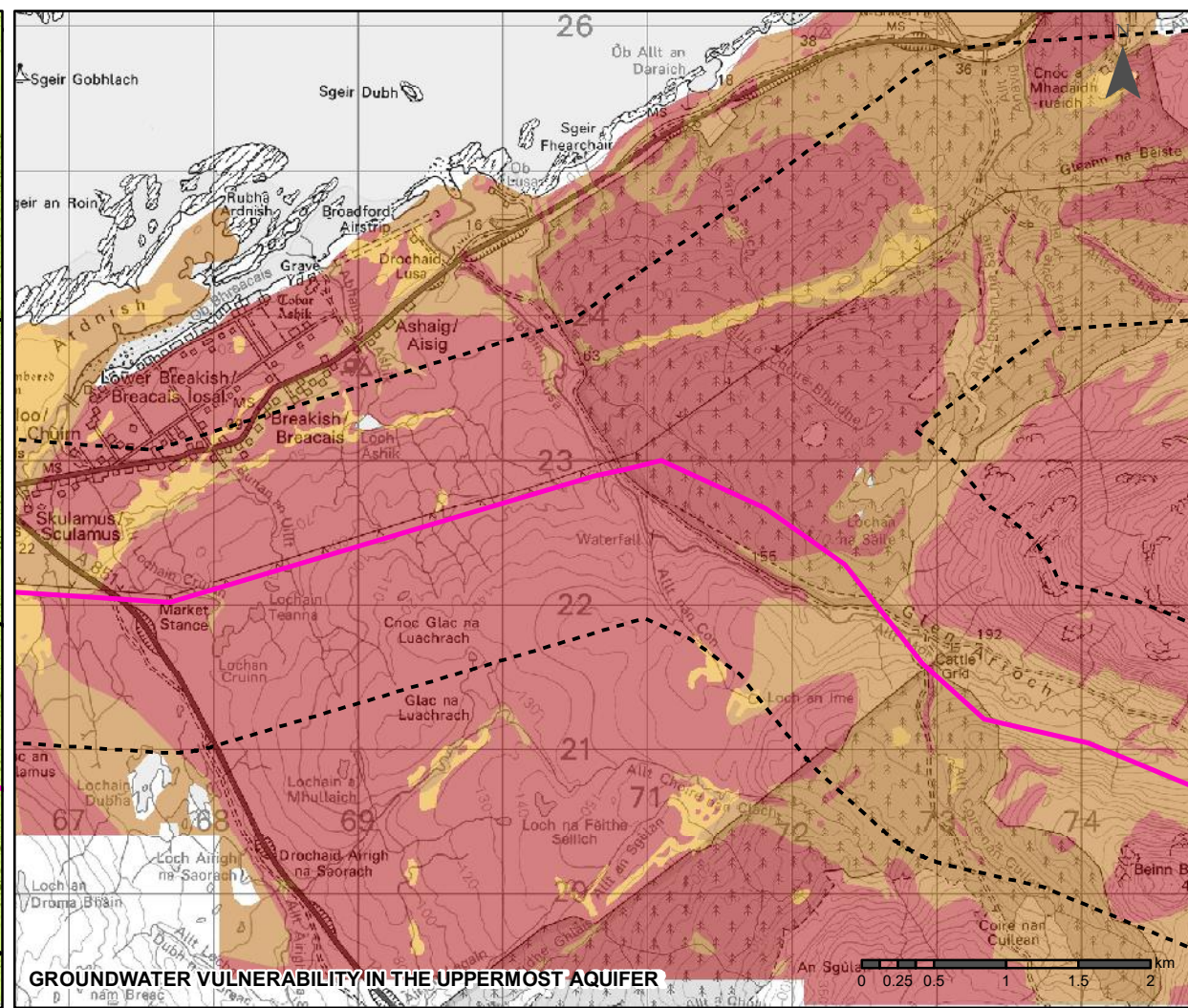
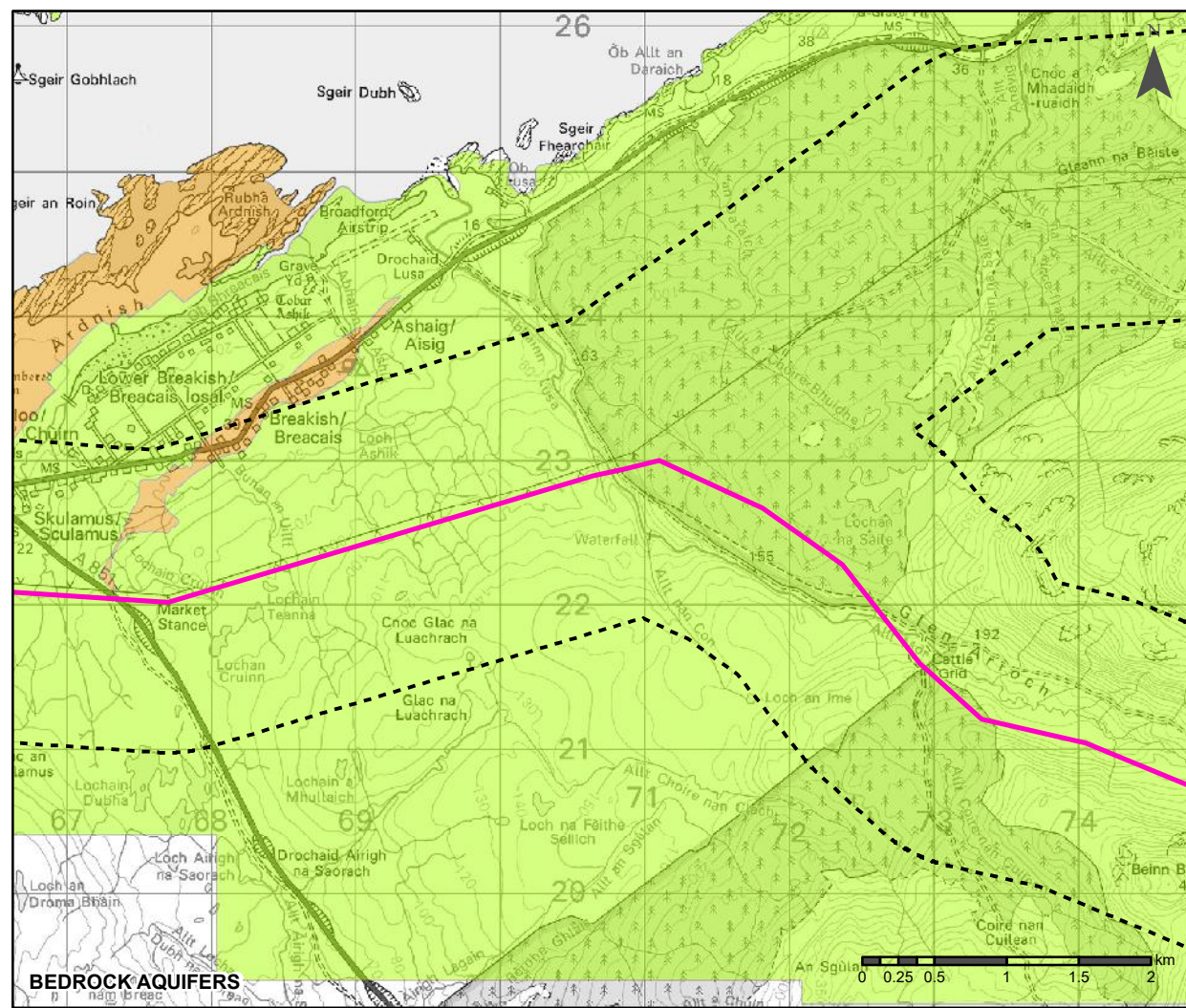
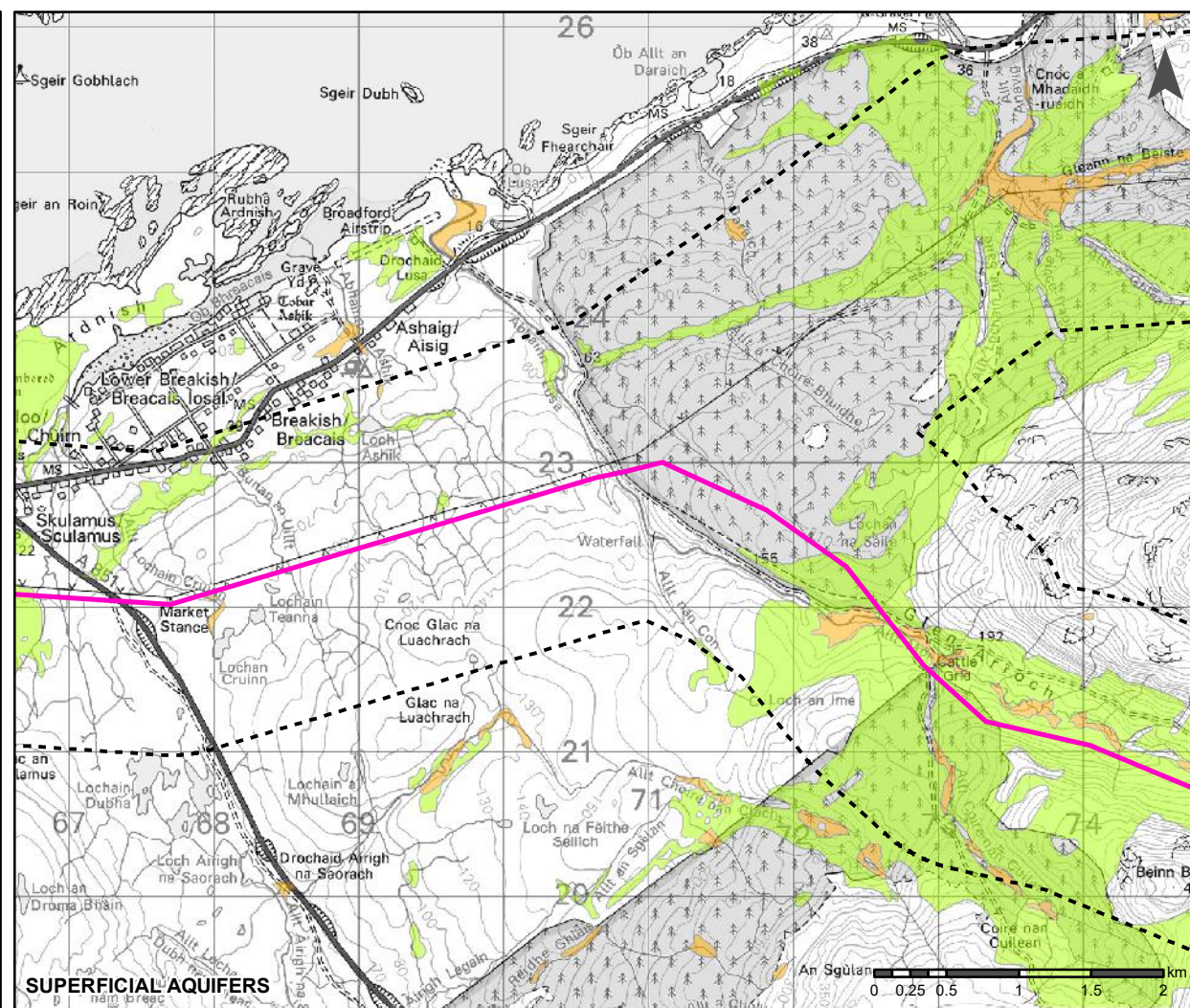
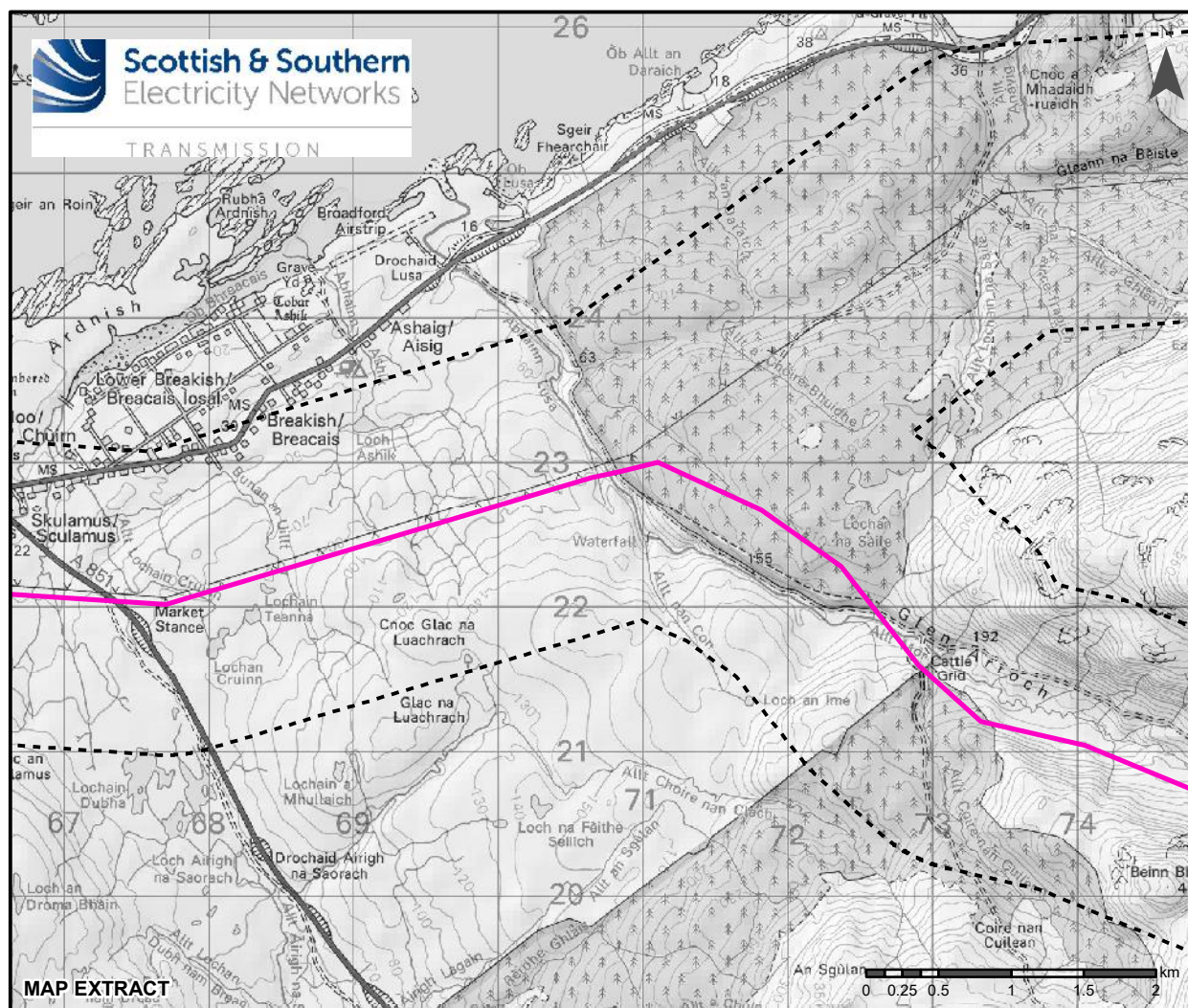
Project No: LT91

Project: Skye Reinforcement Project EIA Report










Title: Figure V6-3 Groundwater Vulnerability Map 1

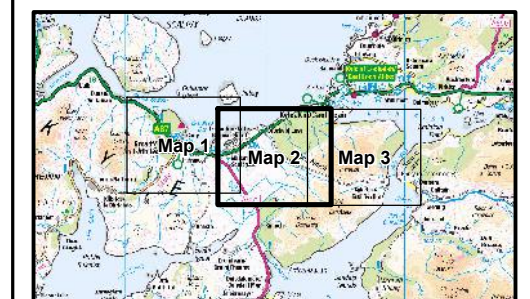
Drawn by: AA Date: 05/09/2022

Drawing: 04707.00020.0123.0



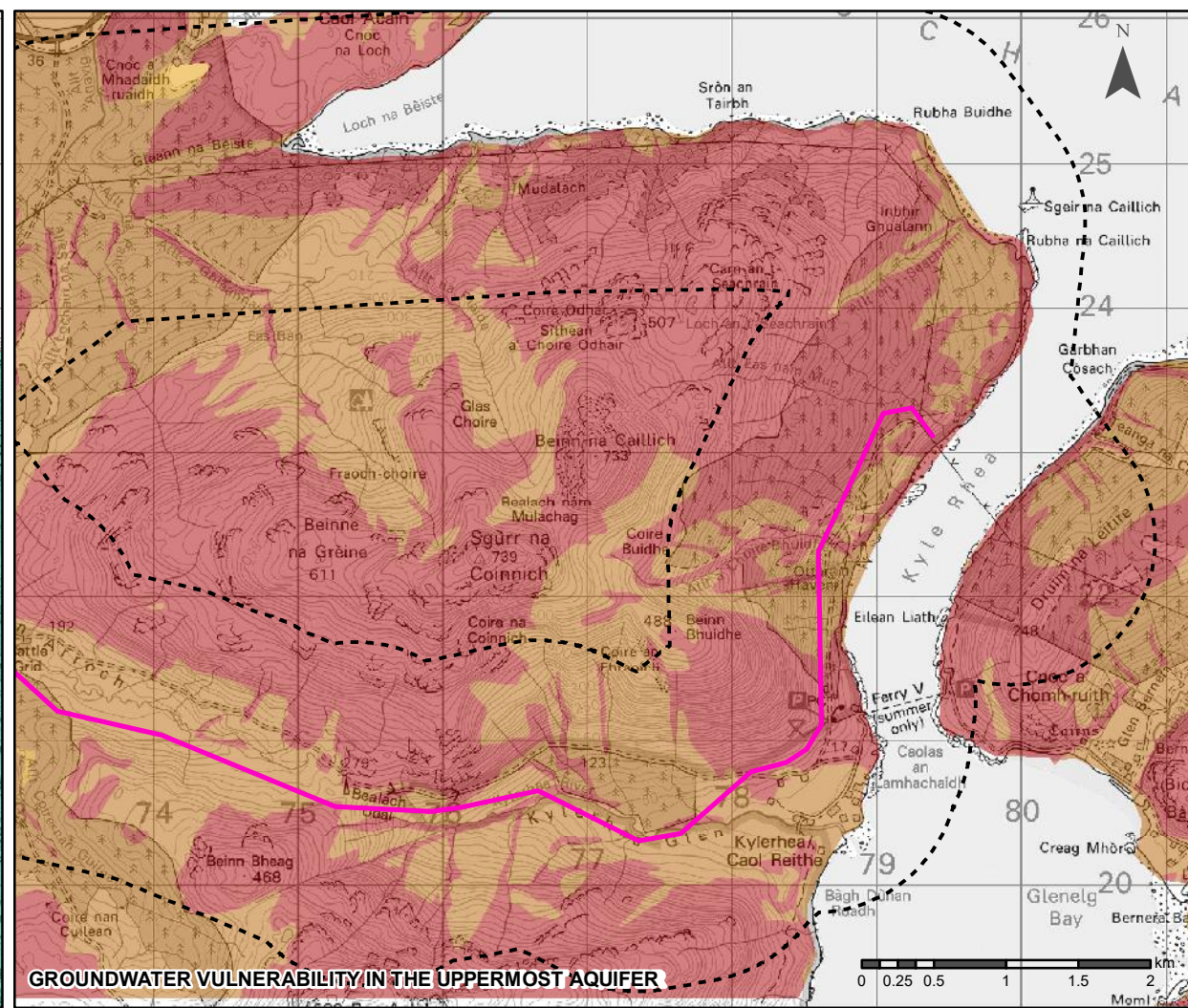
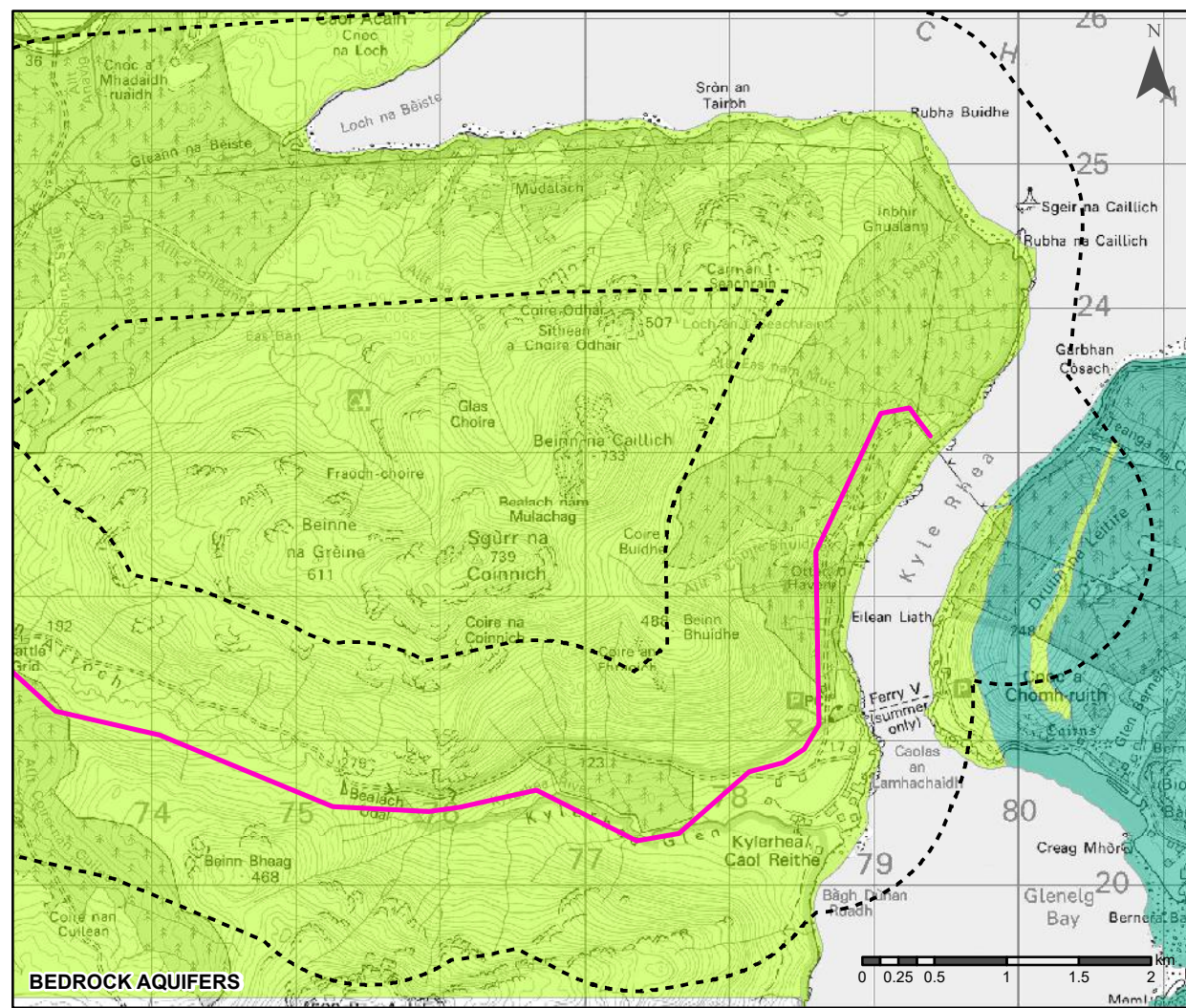
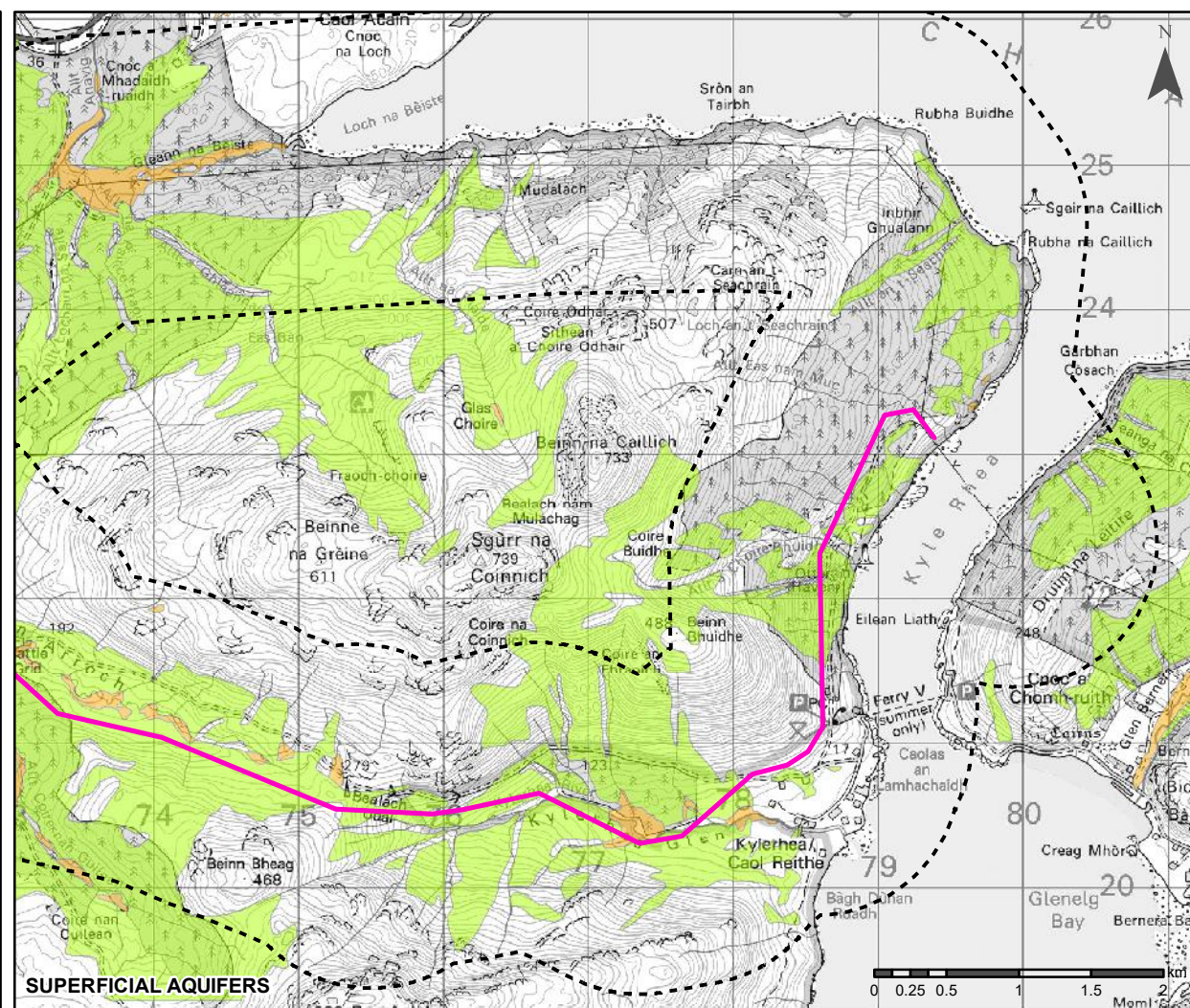
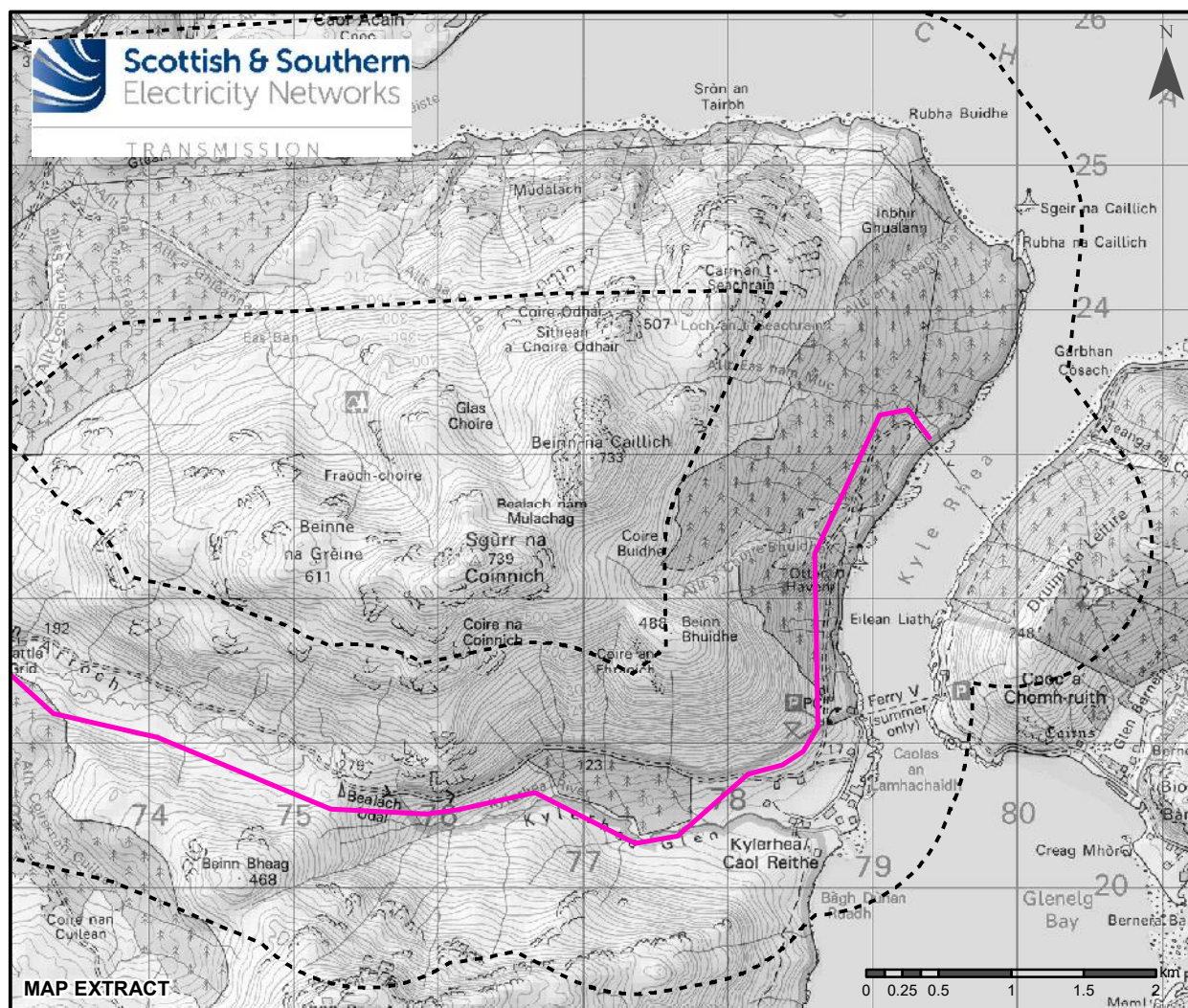
Legend

-  Alternative OHL Alignment
-  1km Study Area
- Superficial**
 -  Intergranular Flow: Moderate to High Productivity
 -  Not a significant aquifer
- Bedrock Aquifers**
 -  Intergranular & Fracture Flow; Moderate Productivity
 -  Fracture Flow; Low Productivity
- Groundwater Vulnerability in the Uppermost Aquifer Vulnerability Class**
 -  5. Vulnerable to most pollutants, with rapid impact in many scenarios.
 -  4a. Vulnerable to those pollutants not readily adsorbed or transformed. Less likely to have clay present in superficial deposits (therefore generally higher vulnerability than 4b).
 -  4b. Vulnerable to those pollutants not readily adsorbed or transformed. More likely to have clay present in superficial deposits (therefore generally lower vulnerability than 4a).



Scale - 1:50,000 @ A3
 Reproduced by permission of Ordnance Survey on behalf of HMSO.
 Crown copyright and database right 2022 all rights reserved.
 Ordnance Survey Licence number EL273236.
 Contains British Geological Survey Materials © NERC 2022

Project No: LT91
 Project: Skye Reinforcement Project EIA Report
 Title: Figure V6-6.3 Groundwater Vulnerability Map 2
 Drawn by: AA Date: 05/09/2022
 Drawing: 04707.00020.0123.0



Legend

- Alternative OHL Alignment
- 1km Study Area
- Superficial Aquifers**
 - Intergranular Flow: Moderate to High Productivity
 - Not a significant aquifer
- Bedrock Aquifers**
 - Fracture Flow; Low Productivity
 - Fracture Flow; Very Low Productivity
- Groundwater Vulnerability in the Uppermost Aquifer Vulnerability Class**
 - 5. Vulnerable to most pollutants, with rapid impact in many scenarios.
 - 4a. Vulnerable to those pollutants not readily adsorbed or transformed. Less likely to have clay present in superficial deposits (therefore generally higher vulnerability than 4b).
 - 4b. Vulnerable to those pollutants not readily adsorbed or transformed. More likely to have clay present in superficial deposits (therefore generally lower vulnerability than 4a).



Scale - 1:50,000 @ A3

Reproduced by permission of Ordnance Survey on behalf of HMSO. Crown copyright and database right 2022 all rights reserved. Ordnance Survey Licence number EL273236. Contains British Geological Survey Materials © NERC 2022

Project No: LT91
Project: Skye Reinforcement Project EIA Report

Title: Figure V6-6.3 Groundwater Vulnerability Map 3

Drawn by: AA Date: 05/09/2022

Drawing: 04707.00020.0123.0