

**Key**

- Proposed OHL Alignment
- Proposed Steel Lattice Tower
- - - Existing 132 kV OHL to be dismantled (Wood Pole)
- New Permanent Access Track (construction type to be determined)
- - - New Temporary Access Track
- Visualisation Location (VL)
- ▶ Direction of View (53.5°)



Tripod Photo

Ordnance Survey Grid Reference:  
NG 144348, 839232

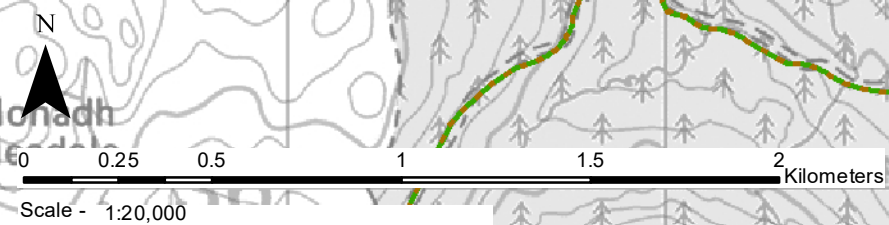
Reproduced by permission of Ordnance Survey on behalf of HMSO.  
Crown copyright and database right 2022 all rights reserved.  
Ordnance Survey Licence number EL273236.

Project No: LT91  
Project: Skye Reinforcement Project  
EIA Report

Title: Figure V4A-1.2a  
Visualisation Location Plan  
VL 1-2 Mugeary

Drawn by: LV 26/08/2022

Drawing: 119026-D-EIA-V4A-1.2a-1.0.0





Existing View

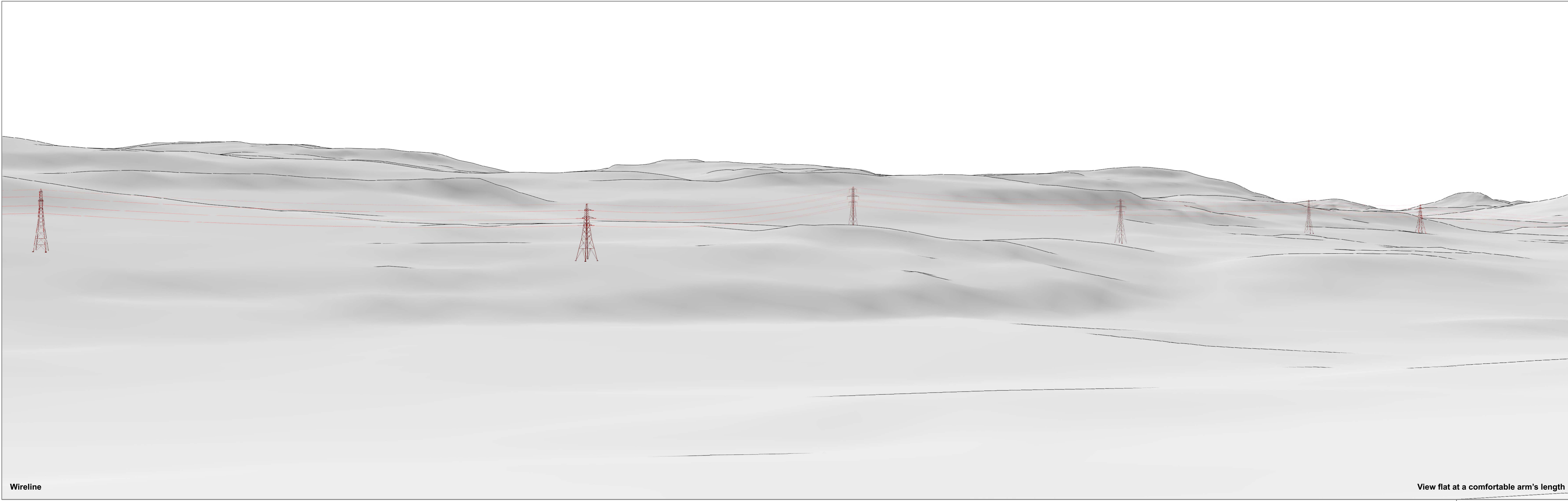
View flat at a comfortable arm's length

Skye Reinforcement Project EIA Report  
 Figure V4A-1.2b - Visualisation Location 1-2: Mugeary, Existing View

OS reference:	144348 E 839232 N	Camera:	Sony ILCE 7RM3	Horizontal field of view:	53.5° (planar projection)
Ground level:	153.8 m AOD	Lens:	50mm (DT 50mm f/1.2 SAM)	Principal distance:	812.5 mm
Direction of view:	250°	Camera height:	1.5m AGL	Paper size:	841 x 297 mm (half A1)
Nearest proposed tower:	0.81 km	Date and time:	29/03/2022 13:44	Correct printed image size:	820 x 260 mm

Drawing No. - 119026-D-EIA-V4A-1.2B-1.0.0 Date - 26.08.2022





Wireline

View flat at a comfortable arm's length

Skye Reinforcement Project EIA Report  
 Figure V4A-1.2c - Visualisation Location 1-2: Mugeary, Wireline

OS reference:	144348 E 839232 N	Horizontal field of view:	53.5° (planar projection)
Ground level:	153.8 m AOD	Principal distance:	812.5 mm
Direction of view:	250°	Paper size:	841 x 297 mm (half A1)
Nearest proposed tower:	0.81 km	Correct printed image size:	820 x 260 mm

Drawing No. - 119026-D-EIA-V4A-1.2C-1.0.0 Date - 26.08.2022





Photomontage

View flat at a comfortable arm's length

Skye Reinforcement Project EIA Report  
 Figure V4A-1.2d - Visualisation Location 1-2: Mugeary, Photomontage

OS reference:	144348 E 839232 N	Camera:	Sony ILCE 7RM3	Horizontal field of view:	53.5° (planar projection)
Ground level:	153.8 m AOD	Lens:	50mm (DT 50mm f/1.2 SAM)	Principal distance:	812.5 mm
Direction of view:	250°	Camera height:	1.5m AGL	Paper size:	841 x 297 mm (half A1)
Nearest proposed tower:	0.81 km	Date and time:	29/03/2022 13:44	Correct printed image size:	820 x 260 mm

Drawing No. - 119026-D-EIA-V4A-1.2D-1.0.0 Date - 26.08.2022

