

- Key**
- Alternative OHL Alignment
 - Alternative Alignment Steel Lattice Tower
 - Existing Steel Lattice Tower to be Retained
 - Proposed OHL Alignment
 - Proposed Steel Lattice Tower
 - Existing 132 kV OHL to be dismantled (Steel Lattice)
 - Existing Access Track
 - Existing Access Track to be Upgraded
 - New Permanent Access Track (Cut / Fill Construction)
 - New Permanent Access Track (Floating Construction)
 - New Permanent Access Track (construction type to be determined)
 - - - New Temporary Access Track
 - New Temporary Spur to Towers
 - Visualisation Location (VL)
 - ▶ Direction of View (53.5°)



Tripod Photo

Ordnance Survey Grid Reference:
NG 178665, 820525

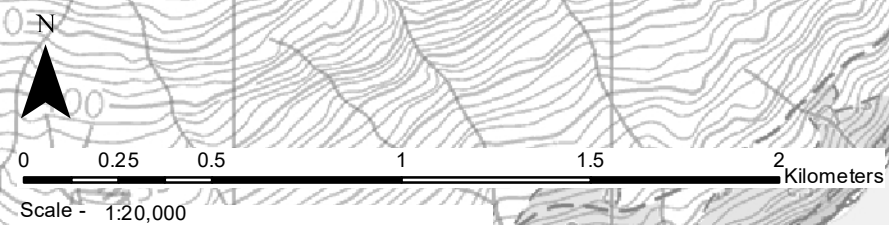
Reproduced by permission of Ordnance Survey on behalf of HMSO.
Crown copyright and database right 2022 all rights reserved.
Ordnance Survey Licence number EL273236.

Project No: LT91
Project: Skye Reinforcement Project
EIA Report

Title: Figure V4A-3.6a
Visualisation Location Plan
VL 3-6 Kyleerhea Village

Drawn by: LV 12/09/2022

Drawing: 119026-D-EIA-V4A-3.6a-1.0.0





Existing View

View flat at a comfortable arm's length

Skye Reinforcement Project EIA Report

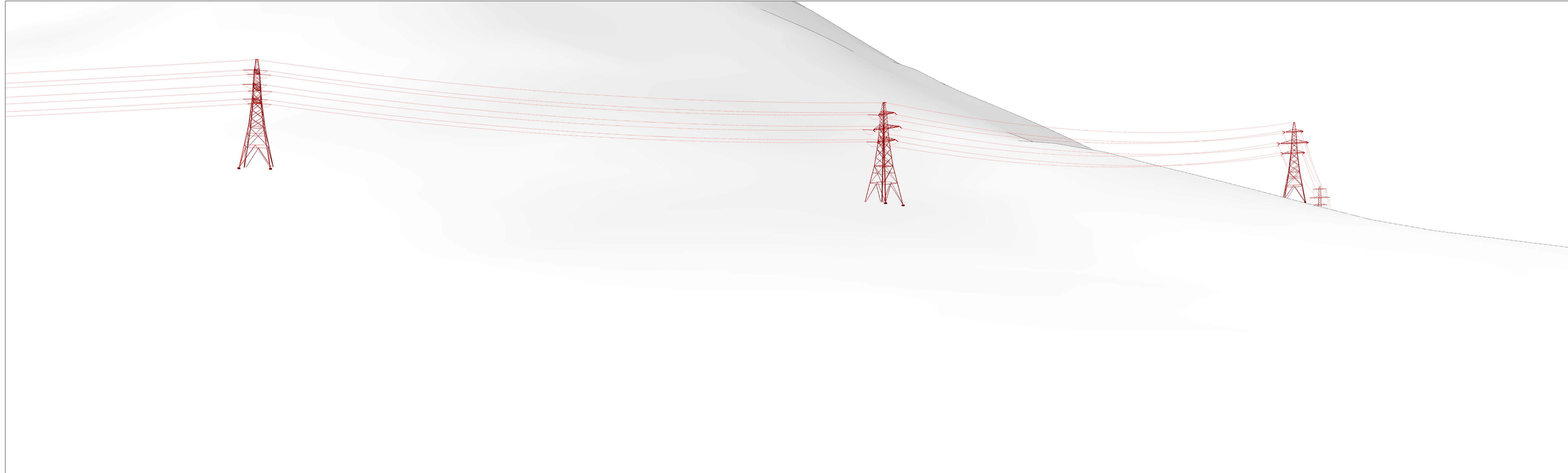
Figure V4A-3.6b - Visualisation Location 3-6: Kyclerhea Village, Existing View

OS reference: 178665 E 820525 N
 Ground level: 11.2 m AOD
 Direction of view: 321°
 Nearest proposed tower: 0.43 km
 Note: A pitch angle of +3° has been applied to the photograph on this figure.

Camera: Canon EOS 6D
 Lens: 50mm (Canon EF 50mm f/1.4)
 Camera height: 1.5m AGL
 Date and time: 03/05/2017 13:02

Horizontal field of view: 53.5° (planar projection)
 Principal distance: 812.5 mm
 Paper size: 841 x 297 mm (half A1)
 Correct printed image size: 820 x 260 mm

Drawing No. - 119026-D-EIA-V4A-3.6B-1.0.0 Date - 26.08.2022



Wireline

View flat at a comfortable arm's length



Photomontage

View flat at a comfortable arm's length

Skye Reinforcement Project EIA Report

Figure V4A-3.6d - Visualisation Location 3-6: Kyclerhea Village, Photomontage

OS reference: 178665 E 820525 N
 Ground level: 11.2 m AOD
 Direction of view: 321°
 Nearest proposed tower: 0.43 km
 Note: A pitch angle of +3° has been applied to the photograph on this figure.

Camera: Canon EOS 6D
 Lens: 50mm (Canon EF 50mm f/1.4)
 Camera height: 1.5m AGL
 Date and time: 03/05/2017 13:02

Horizontal field of view: 53.5° (planar projection)
 Principal distance: 812.5 mm
 Paper size: 841 x 297 mm (half A1)
 Correct printed image size: 820 x 260 mm

Drawing No. - 119026-D-EIA-V4A-3.6D-1.0.0 Date - 26.08.2022

