

- Key**
- Proposed OHL Alignment
 - Proposed Steel Lattice Tower
 - Existing 132 kV OHL to be dismantled (Steel Lattice)
 - Existing Access Track to be Upgraded
 - New Permanent Access Track (construction type to be determined)
 - - - New Temporary Access Track
 - New Temporary Spur to Towers
 - Visualisation Location (VL)
 - ▶ Direction of View (53.5°)



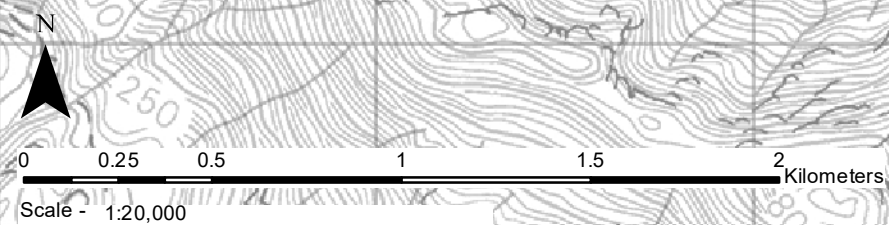
Tripod Photo
Ordnance Survey Grid Reference:
NG 195517, 806379

Reproduced by permission of Ordnance Survey on behalf of HMSO.
Crown copyright and database right 2022 all rights reserved.
Ordnance Survey Licence number EL273236.

Project No: LT91
Project: Skye Reinforcement Project
EIA Report

Title: Figure V4A-4.4a
Visualisation Location Plan
VL 4-4 Road above Kinloch Houran

Drawn by: LV 26/08/2022
Drawing: 119026-D-EIA-V4A-4.4a-1.0.0





Existing View

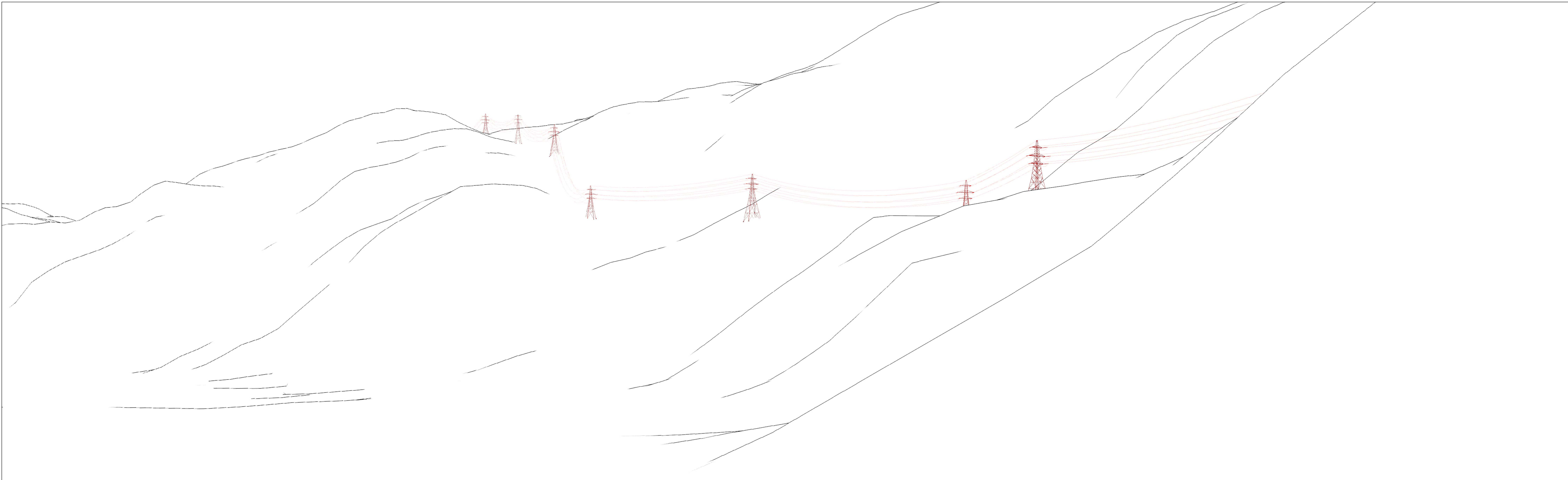
View flat at a comfortable arm's length

Skye Reinforcement Project EIA Report
 Figure V4A-4.4b - Visualisation Location 4-4: Road above Kinloch Hourn, Existing View

OS reference:	195517 E 806379 N	Camera:	Canon EOS 6D	Horizontal field of view:	53.5° (planar projection)
Ground level:	34.4 m AOD	Lens:	50mm (Canon EF 50mm f/1.4)	Principal distance:	812.5 mm
Direction of view:	340°	Camera height:	1.5m AGL	Paper size:	841 x 297 mm (half A1)
Nearest proposed tower:	0.76 km	Date and time:	08/07/2016 12:18	Correct printed image size:	820 x 260 mm

Drawing No. - 119026-D-EIA-V4A-4.4B-1.0.0 Date - 01.08.2022





Wireline

View flat at a comfortable arm's length

Skye Reinforcement Project EIA Report
 Figure V4A-4.4c - Visualisation Location 4-4: Road above Kinloch Hourn, Wireline

OS reference:	195517 E 806379 N	Horizontal field of view:	53.5° (planar projection)
Ground level:	34.4 m AOD	Principal distance:	812.5 mm
Direction of view:	340°	Paper size:	841 x 297 mm (half A1)
Nearest proposed tower:	0.76 km	Correct printed image size:	820 x 260 mm

Drawing No. - 119026-D-EIA-V4A-4.4C-1.0.0 Date - 01.08.2022





Photomontage

View flat at a comfortable arm's length

Skye Reinforcement Project EIA Report
 Figure V4A-4.4d - Visualisation Location 4-4: Road above Kinloch Hourn, Photomontage

OS reference:	195517 E 806379 N	Camera:	Canon EOS 6D	Horizontal field of view:	53.5° (planar projection)
Ground level:	34.4 m AOD	Lens:	50mm (Canon EF 50mm f/1.4)	Principal distance:	812.5 mm
Direction of view:	340°	Camera height:	1.5m AGL	Paper size:	841 x 297 mm (half A1)
Nearest proposed tower:	0.76 km	Date and time:	08/07/2016 12:18	Correct printed image size:	820 x 260 mm

Drawing No. - 119026-D-EIA-V4A-4.4D-1.0.0 Date - 01.08.2022

