

## APPENDIX V1-6.1: PUBLIC CONSULTATION REPORT

1.	PUBLIC CONSULTATION REPORT	<b>3</b>
1.1	Introduction	<b>3</b>
1.2	Route Option Stage Consultation	<b>3</b>
1.3	Alignment Selection Stage Consultation	<b>5</b>
1.4	Local Councillors and Community Forums	<b>5</b>
1.5	Alternative Alignment	<b>6</b>

### Annexes

Annex 1 - Poster and Mail Drop - March 2020

Annex 2 - Route Option Stage Booklet - June 2020

Annex 3 - Poster Virtual Events - June 2020

Annex 4 - Alignment Stage Exhibition Boards - September 2021

Annex 5 - Alignment Stage Event Booklet - September 2021

Annex 6 - Poster and Mail Drop - September 2021



# 1. PUBLIC CONSULTATION REPORT

## 1.1 Introduction

- 1.1.1 This document provides a summary of the public consultation undertaken by SSEN Transmission, in relation to the proposed Skye Reinforcement Project (the Proposed Development) which seeks consent under section 37 of the Electricity Act 1989 to replace and reinforce the existing 132 kV overhead line (OHL) between Ardmore Substation and Fort Augustus Substation.
- 1.1.2 There is no statutory requirement to undertake formal consultation for applications made under section 37 of the Electricity Act 1989. However, SSEN Transmission has sought to maintain an open dialogue with local communities along the route of the Proposed Development throughout the evolution of the project. This has included carrying out two series of consultation events during the route option and alignment selection stages, engaging with local elected members such as Ward Councillors and Community Councils and engaging with landowners, residents and businesses that may be affected by the proposed works.
- 1.1.3 Comments received from local communities during this process has been fundamental in informing the proposed alignment and design solution for the Proposed Development.
- 1.1.4 A range of methods were utilised by SSEN Transmission during public consultations between March 2020 and October 2021, not least due to the restrictions imposed by the Covid-19 pandemic. These methods are described in this report in relation to the consultations undertaken.

## 1.2 Route Option Stage Consultation

- 1.2.1 The appraisal of route options was set out in a Consultation Document<sup>1</sup>, published in March 2020. The Consultation Document provided a summary of project need, the route option process that had been undertaken and a description of the route options appraised. The Consultation Document sought comments from stakeholders and members of the public on the route option studies undertaken, and the rationale for, and approach to, the selection of the preferred route.
- 1.2.2 It had been intended to hold face to face consultation events at several locations along the route following publication of the Consultation Document in March 2020. However, as a result of the Covid 19 pandemic, and in accordance with Scottish Government's Guidance on pre-application consultation for major planning applications<sup>2</sup> during the Covid-19 emergency period<sup>3</sup>, these events had to be cancelled. **Annex 1** provides a copy of the mail drop and posters prepared to advertise the events, and the subsequent poster prepared to confirm cancellation, all of which were advertised locally, through social media channels and email / phone contact with Local Councillors, Ward Managers and Community Councils along the route.
- 1.2.3 To continue engagement on the project at this stage, SSEN Transmission developed an online consultation tool and hosted<sup>4</sup> virtual consultation events during June 2020, to enable the local community and stakeholders to experience the full exhibition from home on a computer, tablet or mobile device. The online exhibition was designed to look and feel like a real consultation in a community hall, with exhibition boards, maps, interactive videos and the opportunity to share views on the proposals (see **Plate 1.1**).

<sup>1</sup> Skye Reinforcement Project: Consultation Document: Route Options (March 2020), produced by SSEN Transmission

<sup>2</sup> Public events and pre-application consultation is not a statutory requirement for Electricity Act applications, but the Scottish Government consider such engagement to be important for large scale projects and direct Applicants of such projects to the relevant advice on pre-application engagement for major planning applications.

<sup>3</sup> Available at: <https://www.gov.scot/publications/coronavirus-covid-19-planning-guidance-on-pre-application-consultations-for-public-events/> (last accessed 25/03/22)

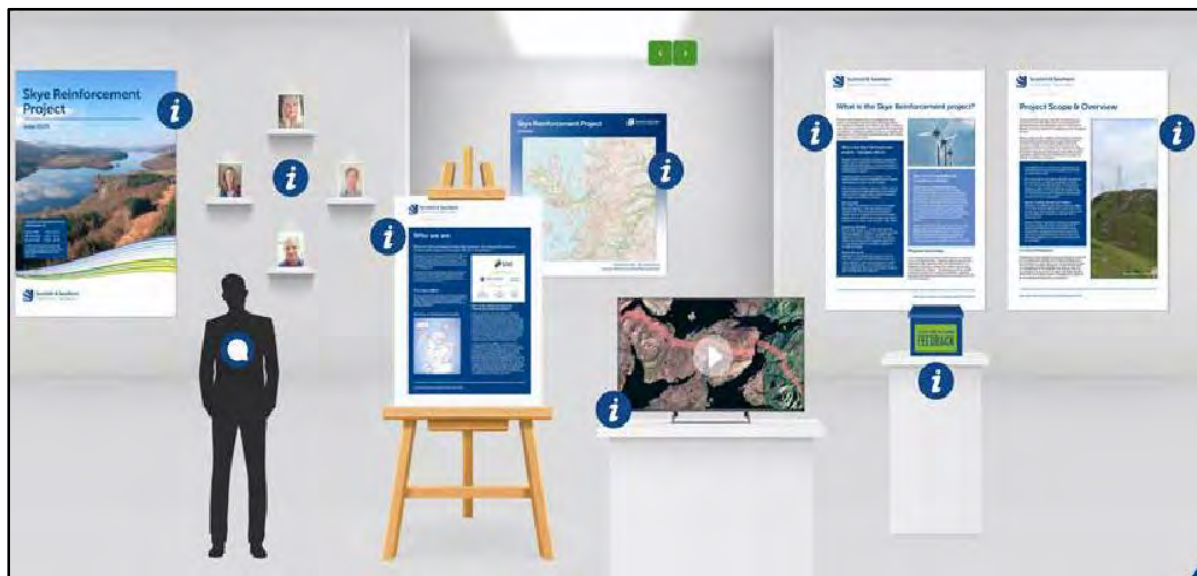
<sup>4</sup> Via the project website <https://www.ssen-transmission.co.uk/projects/skye-reinforcement/>

1.2.4 Visitors were able to engage directly with the project team, via a live chat function, where they could ask any questions they might have about the project and share their feedback on the current proposals. Access to exhibition material and information about the project was also made available. A copy of the exhibition material is provided in **Annex 2**.

1.2.5 The virtual consultation events took place via the project website <https://www.ssen-transmission.co.uk/projects/skye-reinforcement/> at the following times:

- 09 June 2020; 14:00 – 16:00;
- 10 June 2020; 10.00 – 12.00; and
- 11 June 2020; 18:00 – 20:00.

**Plate 1.1: Virtual Event Portal**



1.2.6 The virtual consultation events were advertised in the Press and Journal (Highlands & Islands) on the 05 June 2020, via local radio advertising campaigns and through social media. **Annex 3** provides a copy of the poster prepared to advertise the virtual event locally, and through social media channels and email / phone contact with Local Councillors, Ward Managers and Community Councils along the route.

1.2.7 All contacts from previous engagement on the project and members of the public signing up for project updates from the project webpage were also emailed about the virtual consultation events.

1.2.8 Visitor counts during the virtual consultation event recorded 60 visitors to the three interactive sessions, of these 54 visitors asked questions to the project team via the live chat function. Over a period of 30 days to 30 June 2020, 4,555 unique visitors to the virtual portal were recorded.

1.2.9 A feedback form was provided on the portal and all visitors were invited to complete this.

1.2.10 Comments received from all stakeholders (including members of the public) in response to the Consultation Document (March 2020), or following virtual consultation events, were documented in a Report on Consultation, published in November 2020<sup>5</sup>.

<sup>5</sup> Skye Reinforcement Project: Report on Consultation (November 2020), produced by SSEN Transmission



### 1.3 Alignment Selection Stage Consultation

- 1.3.1 Following the publication of a Consultation Document<sup>6</sup> in September 2021 at alignment selection stage, comments from stakeholders and members of the public on the studies undertaken, and the reasons for the design decisions in the selection of the preferred alignment and design solution, were sought.
- 1.3.2 Face to face public consultation events detailing the preferred alignment and design solution described in the Consultation Document: Alignment Selection (September 2021) were held at the following dates and locations:
- 28 September 2021: Dunvegan Community Hall (15:00-19:00)
  - 29 September 2021: Broadford Village Hall (15:00-19:00)
  - 30 September 2021: Glenelg Village Hall (15:00-19:00)
  - 04 October 2021: Kyleakin Village Hall (15:00-19:00)
  - 05 October 2021: Glengarry Community Hall (15:00-19:00)
  - 06 October 2021: Fort Augustus Village Hall (15:00-19:00)
- 1.3.3 A copy of the exhibition boards is provided in **Annex 4**, whilst a copy of the consultation booklet that was made available for attendees to take away from the event is included in **Annex 5**.
- 1.3.4 Virtual consultation events were also held in the same manner as the events for the route selection stage consultation via the project web page <https://www.ssen-transmission.co.uk/projects/skye-reinforcement/> on 13 October 2021 at 13:00 – 15:00 and 17:00 – 19:00.
- 1.3.5 The consultation events were advertised using various platforms, local newspapers, the West Highland Free Press, and the Press and Journal, SSEN Transmission's social media channels, Facebook and Twitter and the dedicated project webpage. In addition, a postcard was delivered to 9,194 homes and businesses within the locale advertising the dates, times and locations of the face to face and virtual consultation events (see **Annex 6**).
- 1.3.6 Visitor counts during the virtual consultation events recorded 67 unique users (individual devices accessing the site) and 120 page views (the number of different pages loaded across the site) across the two interactive sessions. Only one chat was initiated with the project team via the live chat function to raise one query. In addition, one associated follow up email was received by SSEN Transmission further to the virtual consultation events.
- 1.3.0 Comments received from stakeholders in response to the Consultation Document (September 2021), or following face to face and virtual consultation events, were documented in a Report on Consultation, published in March 2022<sup>7</sup>.
- 1.3.1 The Report on Consultation also confirmed how SSEN Transmission have responded to comments received by stakeholders on the preferred alignment and design solution, and detailed the actions that would be taken as the project progressed through to the EIA and consenting stage.

### 1.4 Local Councillors and Community Forums

- 1.4.1 Throughout the evolution of the project, SSEN Transmission has maintained dialogue with all community councils along the route and has sought to keep members up to date on project progress, and any upcoming consultation events. SSEN Transmission has also hosted a number of meetings with local elected members and community forums, including.

---

<sup>6</sup> Skye Reinforcement Project: Consultation Document: Alignment Selection (September 2021), produced by SSEN Transmission

<sup>7</sup> Skye Reinforcement Project: Report on Consultation (March 2022), produced by SSEN Transmission

- 07 December 2020: Ward 10 (Eilean a' Cheò) Council meeting;
- 08 February 2021: Ward 11 (Caol and Mallaig) Council and Ward 21 (Fort William and Ardnamurchan) Council meeting;
- 15 February 2021: Ward 10 Council meeting;
- 22 March 2021: Ward 10 Council meeting;
- 21 July 2021: Fort Augustus Community Liaison Group, including Fort Augustus Community Council;
- 16 August 2021: Ward 10 Council meeting;
- 12 December 2021: Ward 11 Council, Ward 21 Council and Ward 12 (Aird and Loch Ness) Council meeting;
- 19 January 2022: Fort Augustus Community Liaison Group, including Fort Augustus Community Council;
- 09 March 2022: Fort Augustus Community Liaison Group, including Fort Augustus Community Council;
- 11 April 2022: Ward 10 Council meeting; and
- 15 August 2022: Ward 10 Council meeting

## **1.5 Alternative Alignment**

- 1.5.1 Following the decision by the Applicant to seek consent for a Proposed Alignment and an Alternative Alignment within Section 3 of the project between Broadford and Kyle Rhea due to the sensitivities of the Kinloch and Kyleakin Hills Special Area of Conservation (SAC) and Site of Special Scientific Interest (SSSI), further engagement was held with local councillors and the local community. This included SSEN Transmission organising a meeting with local residents at Kylerhea Community Hall on 18 August 2022 to advise the local community of the decision, and the reasons behind this.

## ANNEX 1 – POSTER AND MAIL DROP – MARCH 2020



# Skye Reinforcement Project Public Consultation Events

## SSEN Transmission invites you to come and share your views with us

### What is happening?

SSEN Transmission is holding a series of Public Consultation Events across Skye and the Highlands to gain views and feedback on our proposals to reinforce the high voltage electricity networks, from Ardmore on the Isle of Skye, to Fort Augustus.

### Why is the Skye reinforcement project required?

**Securing supply:** The current overhead line was constructed between 1956 and 1989, and after a long service is now reaching the end of its life. The replacement is essential to maintain security of supply to homes and businesses along its route, as well as to the Western Isles, which is supplied by two subsea cables from the north of Skye.

**Connecting renewables:** There is demand to connect new renewable electricity generation on Skye, this requires an increase in capacity of the overhead line.

**Network for net zero:** SSEN intends to 'future proof' the replacement line to allow the connection of additional renewables to help meet Government 'net zero' climate change targets. Supporting the transition to 'net zero' emissions.

For further information on the proposals, please visit our dedicated project website or contact Lisa Marchi, Community Liaison Manager.



[lisa.marchi@sse.com](mailto:lisa.marchi@sse.com)



07825 015 507



**Lisa Marchi-Grey**  
Scottish and Southern  
Electricity Networks,  
10 Henderson Road,  
Inverness, IV1 1SN

## Come and meet us here:

### Dunvegan Hall, Dunvegan

Monday 16 March 2020  
3pm – 7pm

### Aros Centre, Portree

Tuesday 17 March 2020  
3pm – 7pm

### Broadford Village Hall, Broadford

Wednesday 18 March 2020  
3pm – 7pm

### Kyleakin Community Hall, Kyleakin

Thursday 19 March 2020  
3pm – 7pm

### Glengarry Community Hall, Glengarry

Tuesday 24 March 2020  
3pm – 7pm

### Glenelg Community Hall, Glenelg

Wednesday 25 March 2020  
3pm – 7pm

### Fort Augustus Village Hall, Fort Augustus

Thursday 26 March 2020  
3pm – 7pm



# Skye Reinforcement Project Public Consultation Events



Scottish & Southern  
Electricity Networks

## SSEN Transmission invites you to come and share your views with us

### What is happening?

SSEN Transmission is holding a series of Public Consultation Events across Skye and the Highlands to gain views and feedback on our proposals to reinforce the high voltage electricity networks, from Ardmore on the Isle of Skye, to Fort Augustus.

### Why is the Skye reinforcement project required?

**Securing supply:** The current overhead line was constructed between 1956 and 1989, and after a long service is now reaching the end of its life. The replacement is essential to maintain security of supply to homes and businesses along its route, as well as to the Western Isles, which is supplied by two subsea cables from the north of Skye.

**Connecting renewables:** There is demand to connect new renewable electricity generation on Skye, this requires an increase in capacity of the overhead line.

**Network for net zero:** SSEN intends to 'future proof' the replacement line to allow the connection of additional renewables to help meet Government 'net zero' climate change targets. Supporting the transition to 'net zero' emissions.

For further information on the proposals, please visit our dedicated project website or contact Lisa Marchi, Community Liaison Manager.



[lisa.marchi@sse.com](mailto:lisa.marchi@sse.com)



07825 015 507



**Lisa Marchi-Grey**  
Scottish and Southern  
Electricity Networks,  
10 Henderson Road,  
Inverness, IV1 1SN



@ssencommunity

## Come and meet us here:

### **Dunvegan Hall, Dunvegan**

Monday 16 March 2020

3pm – 7pm

### **Aros Centre, Portree**

Tuesday 17 March 2020

3pm – 7pm

### **Broadford Village Hall, Broadford**

Wednesday 18 March 2020

3pm – 7pm

### **Kyleakin Community Hall, Kyleakin**

Thursday 19 March 2020

3pm – 7pm

### **Glengarry Community Hall, Glengarry**

Tuesday 24 March 2020

3pm – 7pm

### **Glenelg Community Hall, Glenelg**

Wednesday 25 March 2020

3pm – 7pm

### **Fort Augustus Village Hall, Fort Augustus**

Thursday 26 March 2020

3pm – 7pm



# Skye Reinforcement Project Public Consultation Events

## SSEN Transmission invites you to come and share your views with us

### What is happening?

SSEN Transmission is holding a series of Public Consultation Events across Skye and the Highlands to gain views and feedback on our proposals to reinforce the high voltage electricity networks, from Ardmore on the Isle of Skye, to Fort Augustus.

### Why is the Skye reinforcement project required?

**Securing supply:** The current overhead line was constructed between 1950 and 1989, and after a long service is now reaching the end of its life. Replacement is essential to maintain security of supply to homes and businesses along its route, as well as to the Western Isles, which is supplied by two supply routes from the north of Skye.

**Connecting renewables:** There is demand to connect new renewable electricity generation on Skye, this requires an increase in capacity of the overhead line.

**Network for net zero:** SSEN is investing in a 'future proof' replacement line to allow the connection of additional renewables to help meet government 'net zero' climate change targets. Supporting the transition to 'net zero' emissions.

## Come and meet us here

**Dunvegan Hall, Dunvegan**  
Monday 16 March 2020  
3pm – 7pm

**Aros Centre, Portree**  
Tuesday 17 March 2020  
3pm – 7pm

**Broadford Village Hall, Broadford**  
Wednesday 18 March 2020  
3pm – 7pm

**Kyleakin Community Hall, Kyleakin**  
Thursday 19 March 2020  
3pm – 7pm

**Glengarry Community Hall, Glengarry**  
Tuesday 24 March 2020  
3pm – 7pm


**Glenelg Community Hall, Glenelg**  
Wednesday 25 March 2020  
3pm – 7pm

**Fort Augustus Village Hall, Fort Augustus**  
Thursday 26 March 2020  
3pm – 7pm

For further information on  
these events, please visit our  
dedicated project website  
or contact Lisa Marchi,  
Community Liaison Manager.

 [lisa.marchi@sse.com](mailto:lisa.marchi@sse.com)

 07825 015 507

 **Lisa Marchi-Grey**  
Scottish and Southern  
Electricity Networks,  
10 Henderson Road,  
Inverness, IV1 1SN



## ANNEX 2 – ROUTE OPTION STAGE BOOKLET – JUNE 2020



# Skye Reinforcement Project

---

June 2020

The virtual consultation events will be taking place on:

<b>9 June 2020</b>	14:00 – 16:00
<b>10 June 2020</b>	10:00 – 12:00
<b>11 June 2020</b>	18:00 – 20:00

To find out how you can join the interactive virtual consultation visit [ssen-transmission.co.uk](https://ssen-transmission.co.uk) to find out more.



**Scottish & Southern**  
Electricity Networks

# Who we are

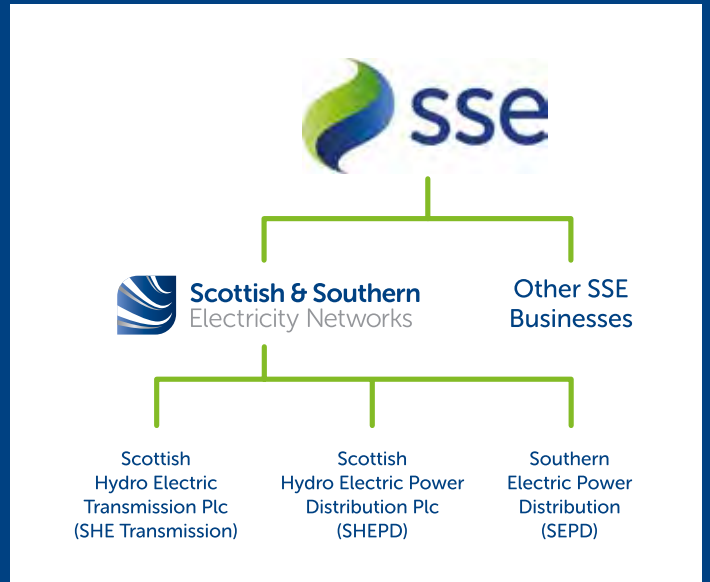
We are Scottish and Southern Electricity Networks, operating under licence as Scottish Hydro Electric Transmission Plc (SHE Transmission).

We maintain and invest in the high voltage 132kV, 220kV, 275kV and 400kV electricity transmission network in the north of Scotland. Our network consists of underground and subsea cables, overhead lines on wooden poles and steel towers, and electricity substations, extending over a quarter of the UK's land mass crossing some of its most challenging terrain.

We power our communities by providing a safe and reliable supply of electricity. We do this by taking the electricity from generators and transporting it at high voltages over long distances through our transmission network for onwards distribution to homes and businesses in villages, towns and cities.

## Our responsibilities

We have a licence for the transmission of electricity in the north of Scotland and we are closely regulated by the energy regulator Ofgem. Our licence stipulates that we must develop and maintain an efficient, co-ordinated and economical system of electricity transmission.



## What is the difference between Transmission and Distribution?

Electricity Transmission is the transportation of electricity from generating plants to where it is required at centres of demand. The Electricity Transmission network, or grid, transports electricity at very high voltages through overhead wires, underground cables and subsea cables. The transmission network connects large scale generation, primarily renewables, to central and southern Scotland and the rest of Great Britain. It also helps secure supply by providing reliable connection to the wider network of generation plans. The Electricity Distribution network is connected into the Transmission network, but the voltage is lowered by transformers at electricity substations, and the power is then distributed to homes and businesses through overhead lines or underground cables.

In total we maintain about 5,000km of overhead lines and underground cables – easily enough to stretch across the Atlantic from John O’Groats all the way to Boston in the USA. Our network crosses some of the UK’s most challenging terrain– including circuits that are buried under the seabed, are located over 750m above sea level and up to 250km long. The landscape and environment that contribute to the challenges we face also give the area a rich resource for renewable energy generation. There is a high demand to connect from new wind, hydro and marine generators which rely on Scottish and Southern Electricity Networks to provide a physical link between the new sources of power and electricity users. Scottish and Southern Electricity Networks is delivering a major programme of investment to ensure that the network is ready to meet the needs of our customers in the future.

## Overview of Transmission Projects



# What is the Skye Reinforcement project?

The Skye reinforcement project is the replacement of the existing overhead electricity transmission line that runs from Fort Augustus to Ardmore in the north of Skye. This consultation seeks views on the preferred route proposed for the replacement overhead line. The feedback received from this consultation will help inform the more detailed overhead line route, which will be consulted on in Autumn 2020.

## Why is the Skye Reinforcement project – changing drivers

Between 2016 and 2018 we consulted on proposals to install a second overhead wood pole line, broadly in parallel with the existing line, to connect a number of renewable electricity generators looking to connect to the transmission network.

Following a review of the asset condition of the existing overhead line it was identified that this needed replacement to maintain security of supply.

This project was therefore stopped in 2018 to allow for a more holistic and enduring approach that will meet future security of supply needs, connect renewables and support the transition to net zero.

### Securing supply

The current overhead line was constructed between 1956 and 1989 and is now reaching the end of its operational life. The replacement is essential to maintain security of supply to homes and businesses along its route, as well as to the Western Isles, which is supplied by two subsea cables from the north of Skye.

### Connecting renewables

There is clear demand to connect new renewable electricity generation between Fort Augustus and Skye, with over 100MW of contracted generation which requires an increase in capacity of the overhead line. There is also the potential for additional generation to come forward, with over 200MW of generation currently in scoping.

### Network for net zero

We intend to 'future proof' the replacement line to allow the connection of additional renewables that may be required to help meet Government 'net zero' climate change targets. This will greatly reduce the need for additional major works in the future, helping keep local disruption to a minimum.



## Our role in supporting the transition to net zero

Climate change is already affecting people, ecosystems and livelihoods around the world. Tackling climate change is the greatest challenge of our generation. There is growing consensus that to tackle climate change we need to fully decarbonise the economy, creating net zero emissions, to prevent the worst effects of global warming. Responding to the advice of the Committee on Climate Change, the UK Government has committed to achieving net zero emissions by 2050 and the Scottish Government committing to meet this target five years earlier, in 2045.

With the north of Scotland home to some of the UK's greatest resources of renewable energy, we have a critical role to play in the transition to net zero - by building the transmission infrastructure required to connect renewable electricity generation and transporting that clean electricity to where it is needed.

## Proposed technology

As the volume of power that can be transported on overhead wood pole lines is limited, to meet the required capacity of the replacement line, steel structures will be required from Fort Augustus to Edinbane on Skye; with wooden pole remaining from Edinbane to Ardmore. The alternative would be multiple overhead wood pole lines, which would result in significant environmental impacts and would not be economical to the GB electricity consumer.



# Project Scope & Overview

The existing 132 kV overhead line (OHL) from Fort Augustus to Ardmore on the Isle of Skye is the sole connection from the mainland electricity transmission system to Skye and the Western Isles and is essential for maintaining security of supply in the area.

Recent studies into the condition of the existing infrastructure have indicated that the section of the OHL between Quoich substation and Ardmore substation requires to be rebuilt and upon completion of construction of the new line, the existing line removed. Furthermore, as a result of an increase in renewable energy projects requesting access to the electricity transmission network, there is a requirement to increase the capacity of the OHL in its entirety.

To facilitate the known connection requirements, the main elements of the proposed development solution are summarised below:

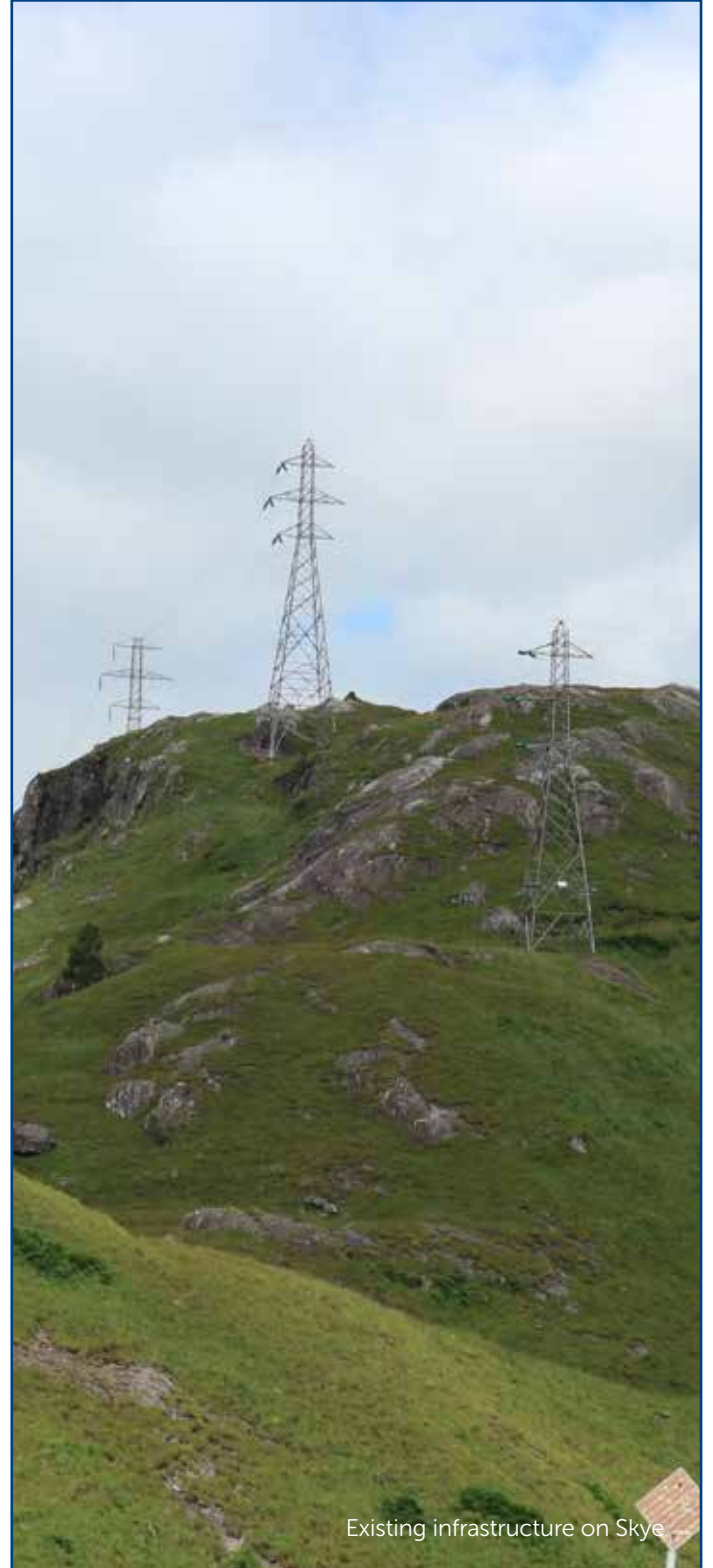
From Fort Augustus substation to Broadford substation, it is proposed to construct a new double circuit 132 kV OHL comprising steel structures. The existing Fort Augustus to Skye Tee 132 kV trident wood pole OHL, and the existing 132 kV steel lattice OHL between Skye Tee and Broadford would be dismantled and removed once the new OHL is operational;

Between Broadford substation and Edinbane substation, the existing single circuit wood pole trident 132 kV OHL would be replaced with a new 132 kV OHL comprising of steel structures. The existing OHL would be dismantled and removed once the new OHL is operational; and

Between Edinbane substation and Ardmore substation, the existing single circuit wood pole trident 132 kV OHL would be replaced with a new higher capacity 132 kV trident wood pole OHL. During construction, the existing overhead line would remain in place and following completion of the new line, the existing will be dismantled.

## Localised Mitigation

Underground cable installation requires significant groundworks. Access requirements and effects on habitat therefore have to be considered as a result. Due to the cost of cable technologies and associated substation equipment, it would not be viable to consider these for the entire line route. Instead, they may be considered in short sections in areas of particular sensitivity where they could address specific consenting issues subject to environmental and engineering considerations.



Existing infrastructure on Skye

# Technical Solutions to Meet the Project Need

## Existing Infrastructure

The existing 132kV overhead line which connects Fort Augustus and Skye consists of four distinct sections, which were constructed at different times over the past 65 years in response to changing needs. These include:

- Fort Augustus to Abercalder - Trident wood pole
- Abercalder to Quoich – Steel lattice towers
- Quoich to Broadford – Steel lattice towers
- Broadford to Ardmore – Trident wood pole

The existing infrastructure is approaching the end of its operational life and a significant capacity increase is required to meet the needs of renewable generators looking to connect. To maintain security of supply and carry the power required to support net zero emissions targets, it has been deemed not feasible to upgrade the existing overhead line infrastructure. As such the existing 132kV overhead lines between Fort Augustus and Ardmore will be replaced.

Please note the Abercalder to Quoich section is presently being replaced with a wood pole OHL due to asset condition. This will ensure continued security of supply from Quoich Power Station and during the construction phase, can act as a temporary diversion for the development.

## Edinbane to Ardmore

Less power will be transferred between Edinbane and Ardmore. A new trident H wood pole is suited to the terrain in this area and will be able to carry sufficient power.



**Figure 1** An Example of a Trident H wood pole structure

## Fort Augustus to Edinbane

The power that can be transported with a wood pole structure is limited. Therefore, multiple overhead lines would be required between Fort Augustus and Edinbane to meet the requirements of the replacement line. In addition, wood poles cannot be used in certain areas due to wind loadings at altitude.

Steel structures are therefore being considered between Fort Augustus and Edinbane.



**Figure 2** An example of a Steel Lattice Tower Structure



**Figure 3** An Example of a NeST Steel Monopole Structure

# Consideration of Route Options

The selection of potential routes brings together work by three main disciplines:



## Engineering Team

Who identify engineering constraints and where overhead lines and cables can be installed from a construction and operational perspective;



## Environmental Team

Who identify key environmental constraints (aspects) along the routes which the new infrastructure could impact upon; and



## Land Team

Who engage with landowners to identify key land use constraints

## Identifying Key Environmental Aspects

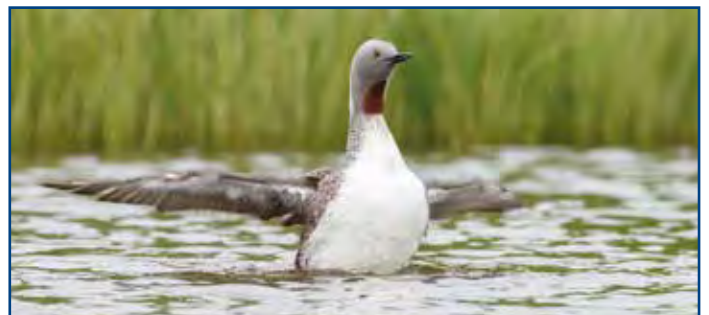
Key environmental aspects are identified through a mixture of desktop assessment and site surveys. Work undertaken to date on the route options has included detailed mapping of all potential routes and identification of environmental aspects which could constrain the proposed development both physically and in terms of gaining consent.

**In addition, a suite of environmental surveys has been undertaken to provide additional baseline information, these covered:**

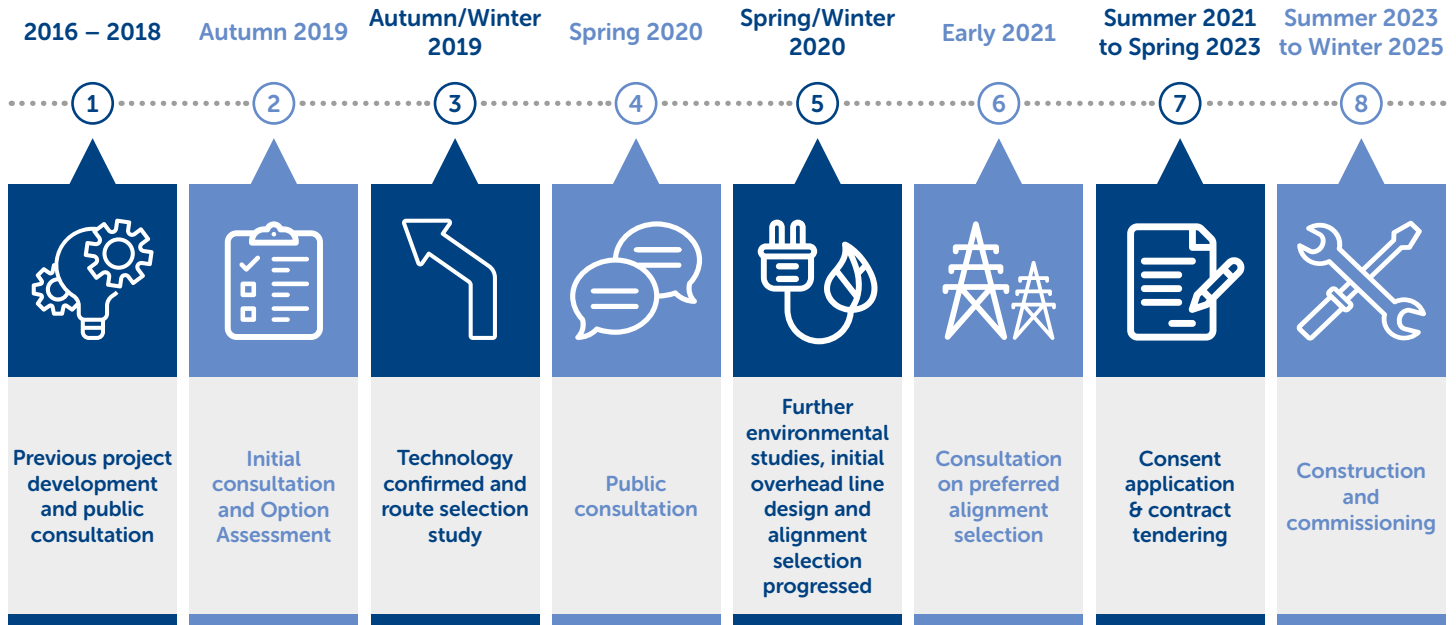
- Landscape and visual walkover survey by landscape architects;
- Cultural heritage walkover survey by archaeologists;
- Bird surveys including for wildfowl, raptors, breeding birds and wintering birds;
- Habitat survey;
- Otter survey; and
- Peat survey

**The key environmental aspects that have informed the overhead line routing process include:**

- Landscape character and visual amenity aspects;
- Special Protected Areas (SPA), for birds;
- Special Areas of Conservation (SAC), for habitat;
- Sites of Special Scientific Interest (SSSI);
- Local Nature Conservation Sites;
- National Scenic Areas;
- Protected Species and habitats
- Scheduled Monuments;
- Peat / ground conditions



# Project Timeline



**1 Previous project development and public consultation**  
 Consultation and development work on a proposed additional overhead line between the Isle of Skye and Fort Augustus. The project driver was to enable renewable generation on Skye to connect to the transmission network. This project was stopped in 2018 to allow for a more holistic and enduring approach to meet future security of supply needs and support the transition to net zero

**2 Initial consultation and Option Assessment**  
 Consultations with key statutory bodies such as Scottish National Heritage, The Highland Council, Historic Environment Scotland and Scottish Environment Protection Agency were undertaken to seek feedback on the project and outline the assessment methodologies used to determine the changes to project need

**3 Technology confirmed and route selection study started**  
 Proposed technology and overhead line corridor (wide area between connection points) identified. Route options identified, options appraisal undertaken and preferred route identified

**4 Public consultation**  
 Route consultation with statutory, non-statutory bodies and communities on initial project proposals. Document detailing scope of consultation to be published

**5 Further environmental studies, initial overhead line design and alignment selection progressed**  
 Review all feedback and publish the Report on Consultation. Confirm the proposed route. Undertake further environmental studies and initial engineering design to identify the preferred alignment for the overhead line. Confirm the preferred alignment for the OHL and establish what structure types will be needed, including for any mitigation informed by early EIA work.

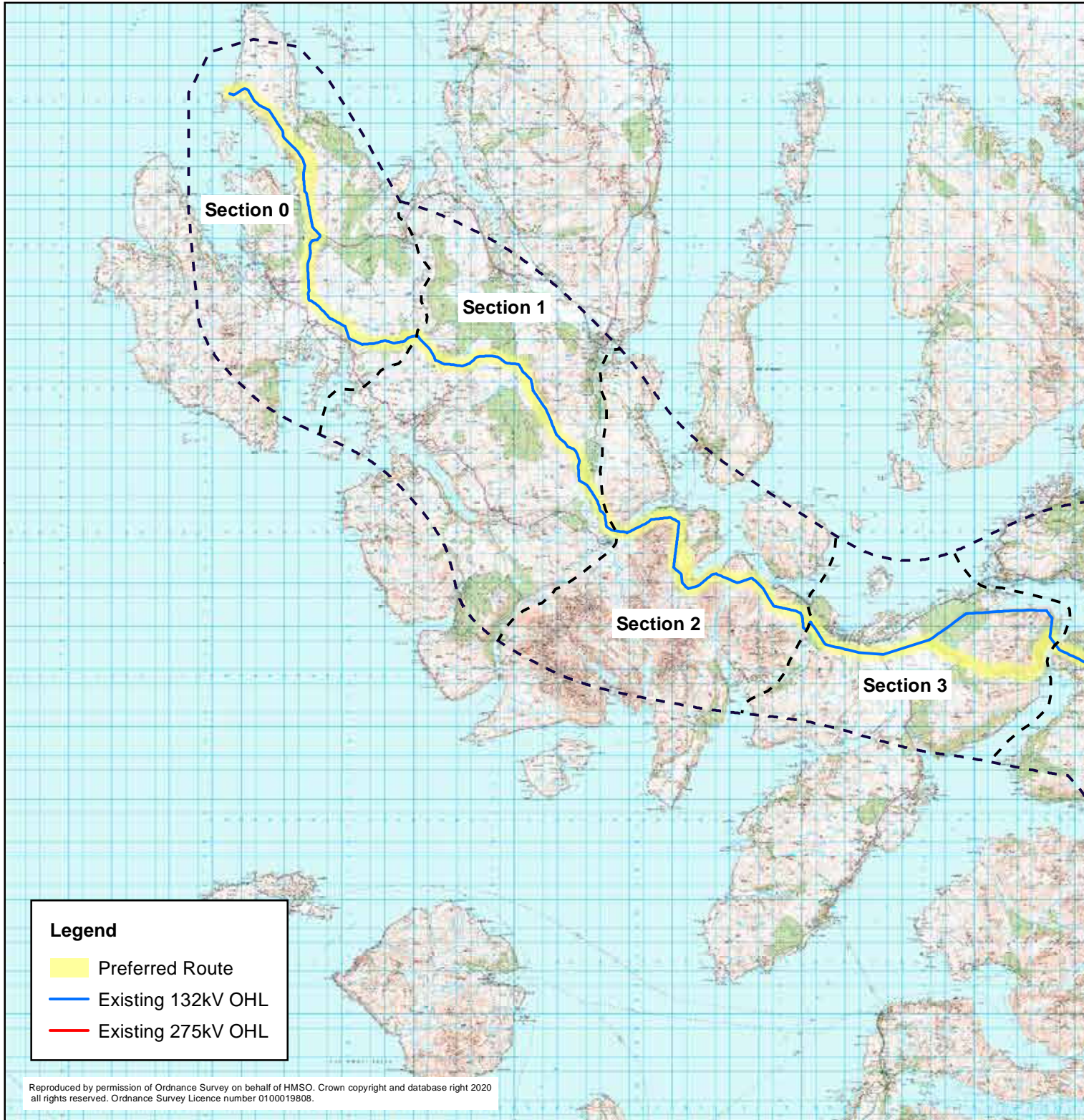
**6 Consultation on preferred alignment selection**  
 Undertake consultation on the preferred alignment for the overhead line and hold further public consultations

**7 Consent application & contract tendering**  
 Confirm the overhead line alignment and design solution, and publish the Report on Consultation. Progress Environmental Impact Assessment (EIA), negotiations with landowners, preparation and submission of Section 37 consent application, contract tendering and procurement detailed design

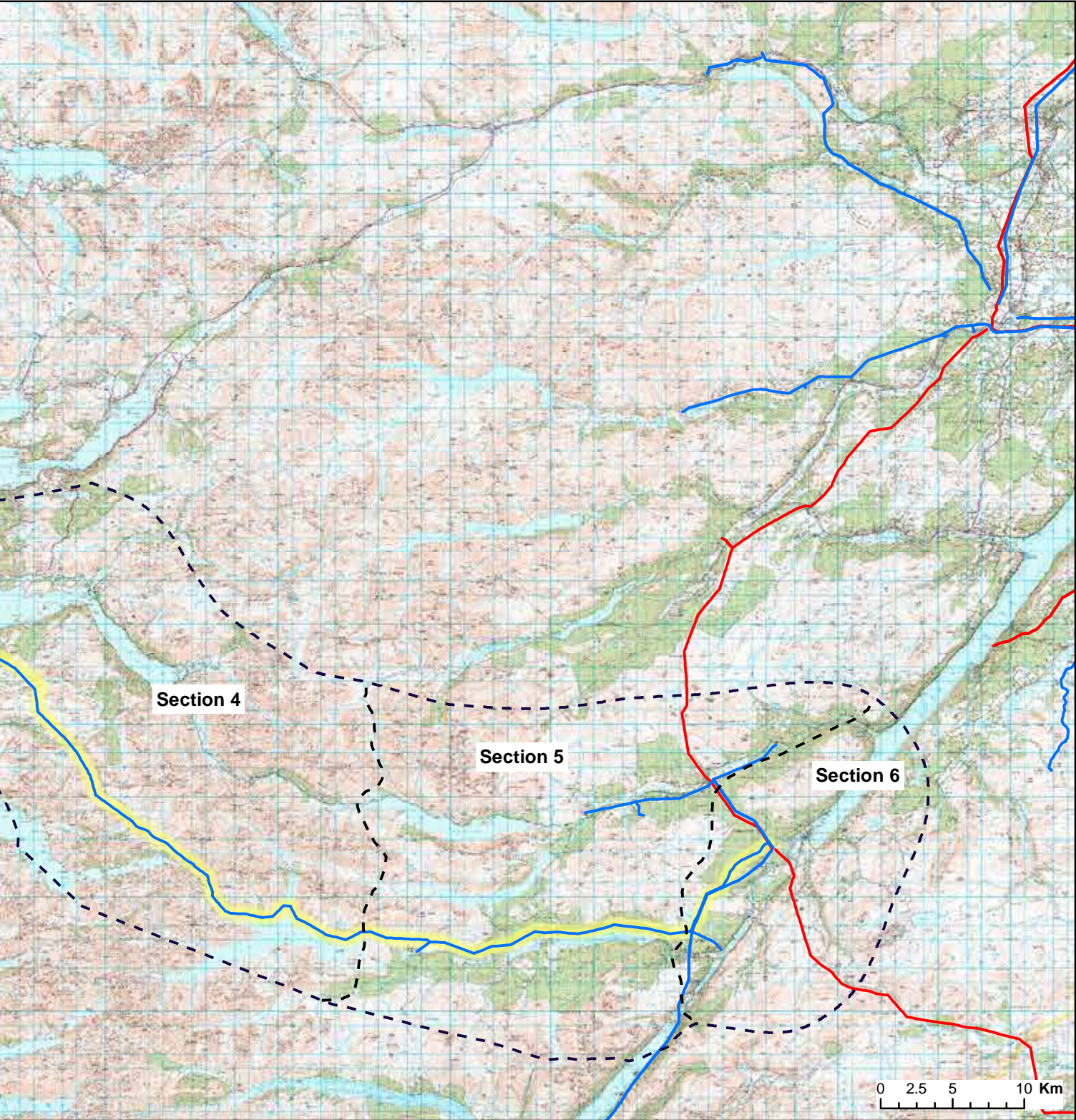
**8 Construction and commissioning**



# Preferred Overall Route





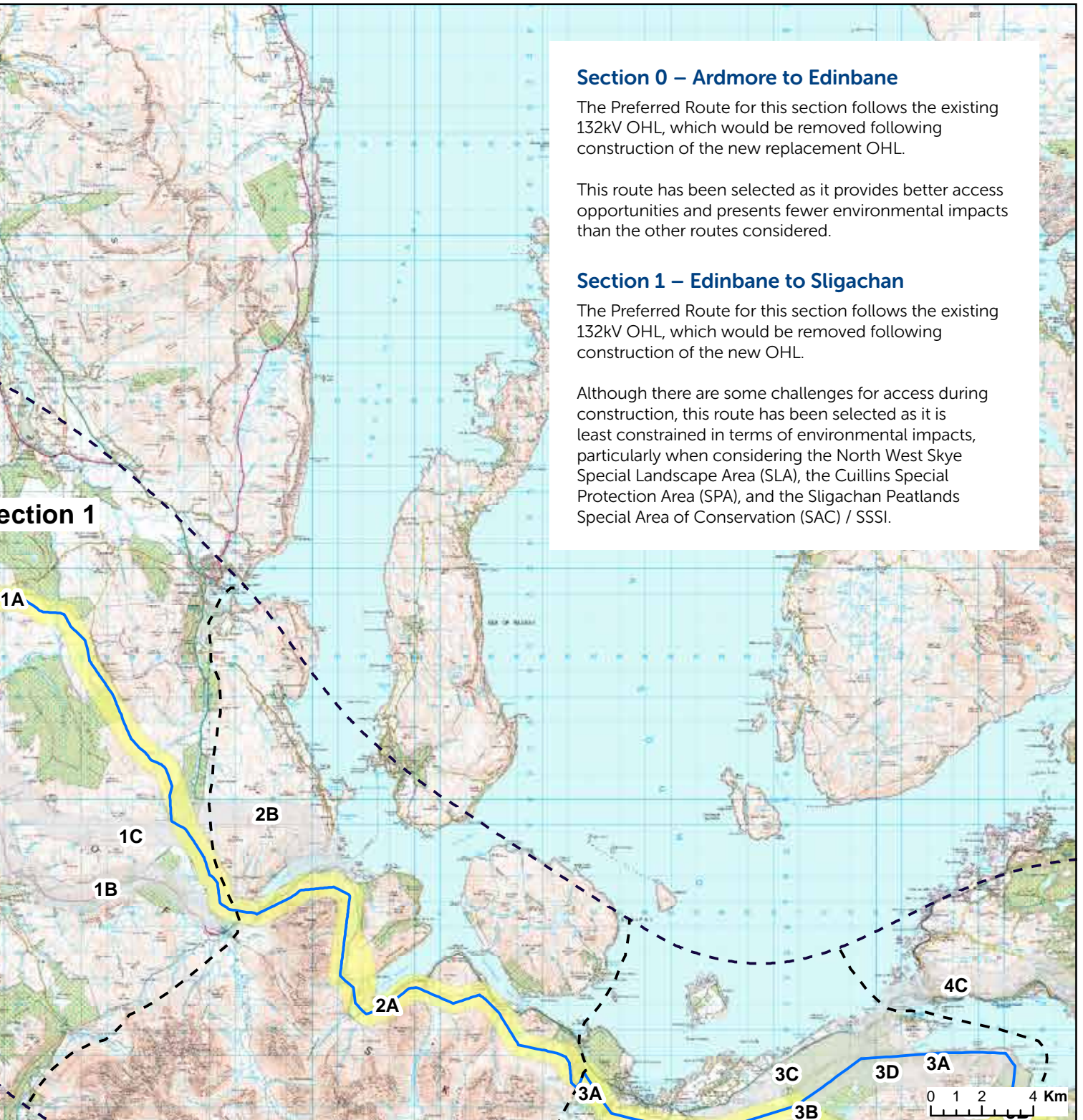




# Preferred Route – Sections 0-1

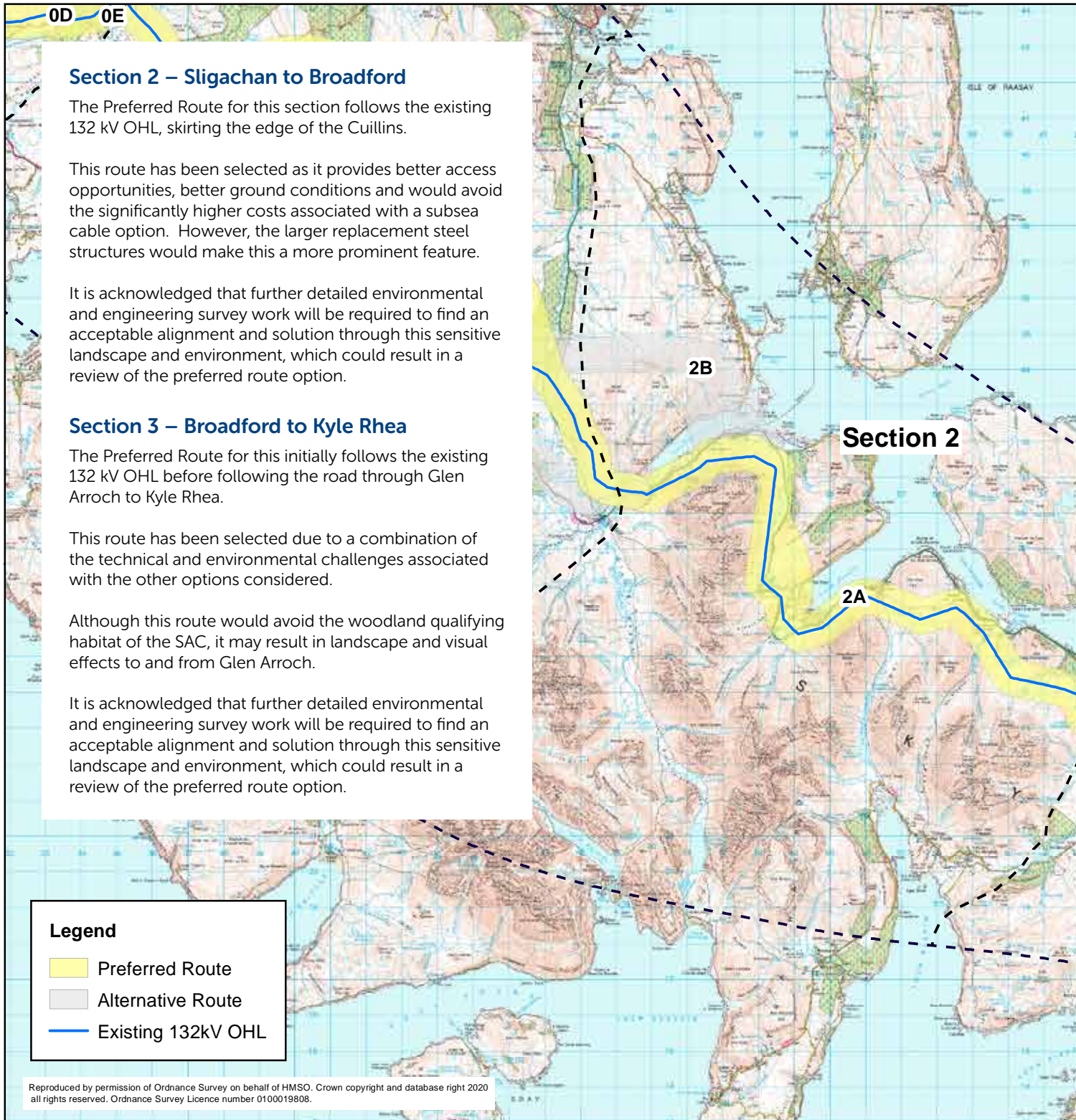








# Preferred Route – Sections 2-3

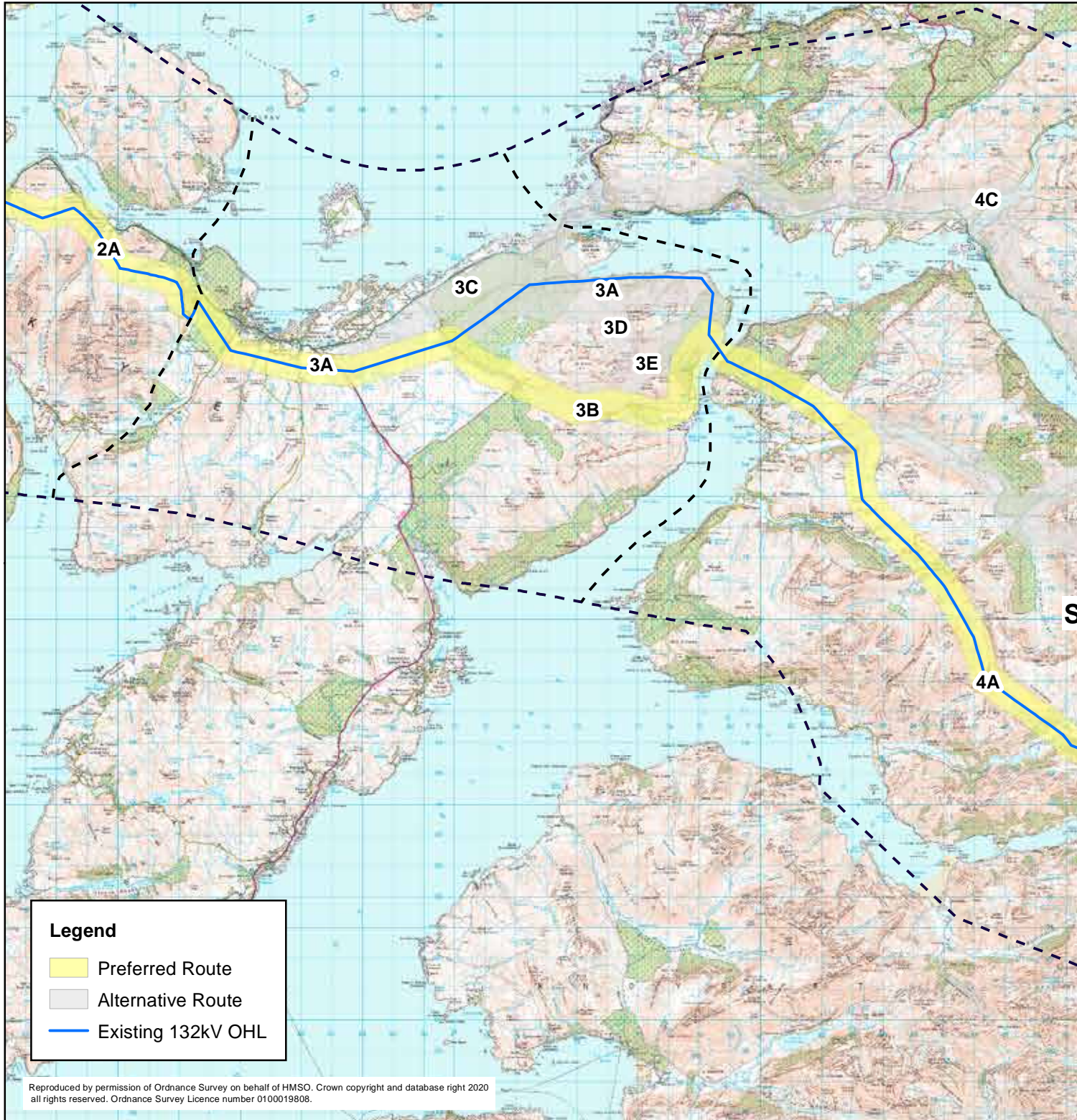




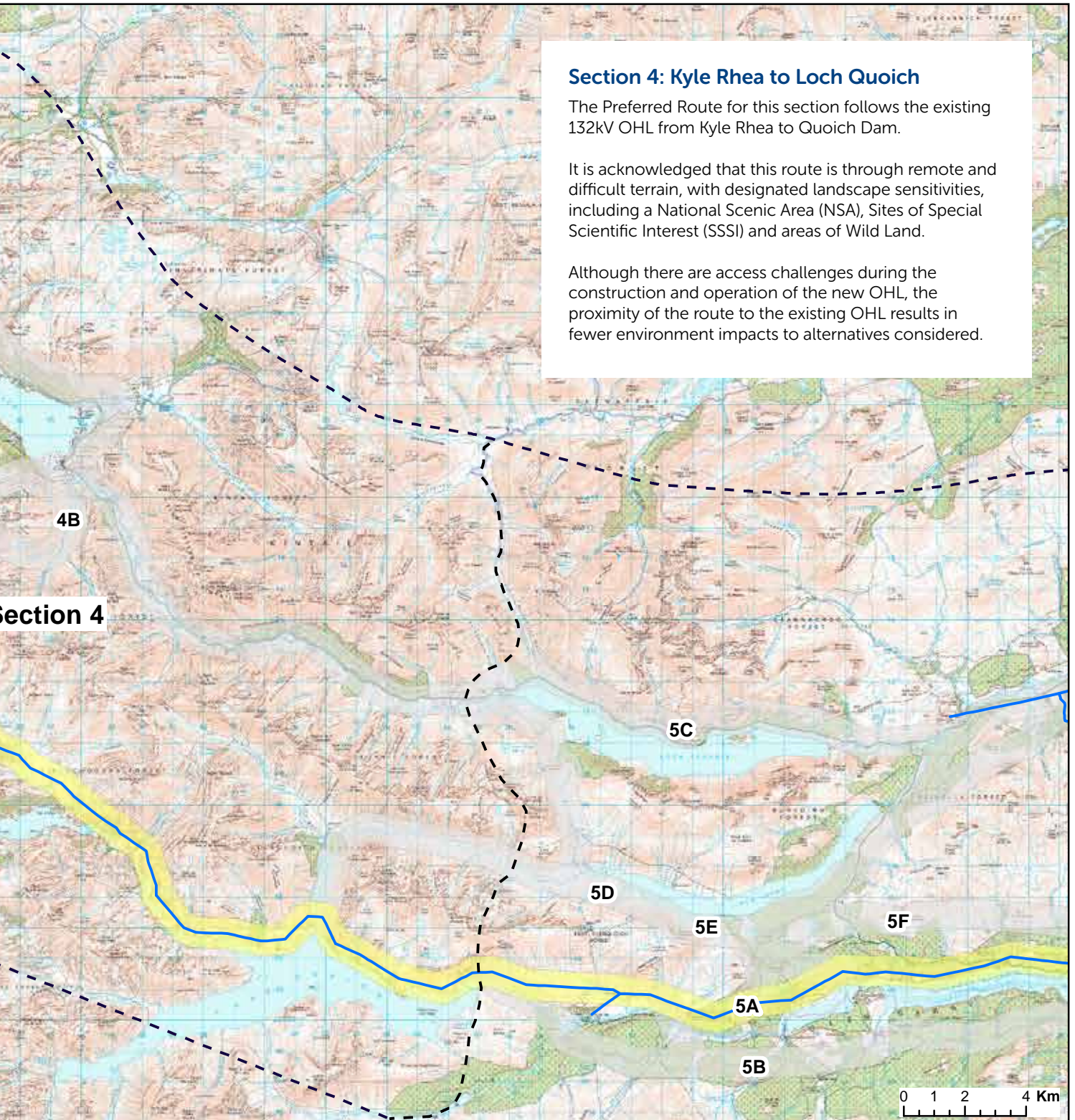




# Preferred Route – Section 4









# Preferred Route – Sections 5-6

## Section 5 – Loch Quoich to Invergarry

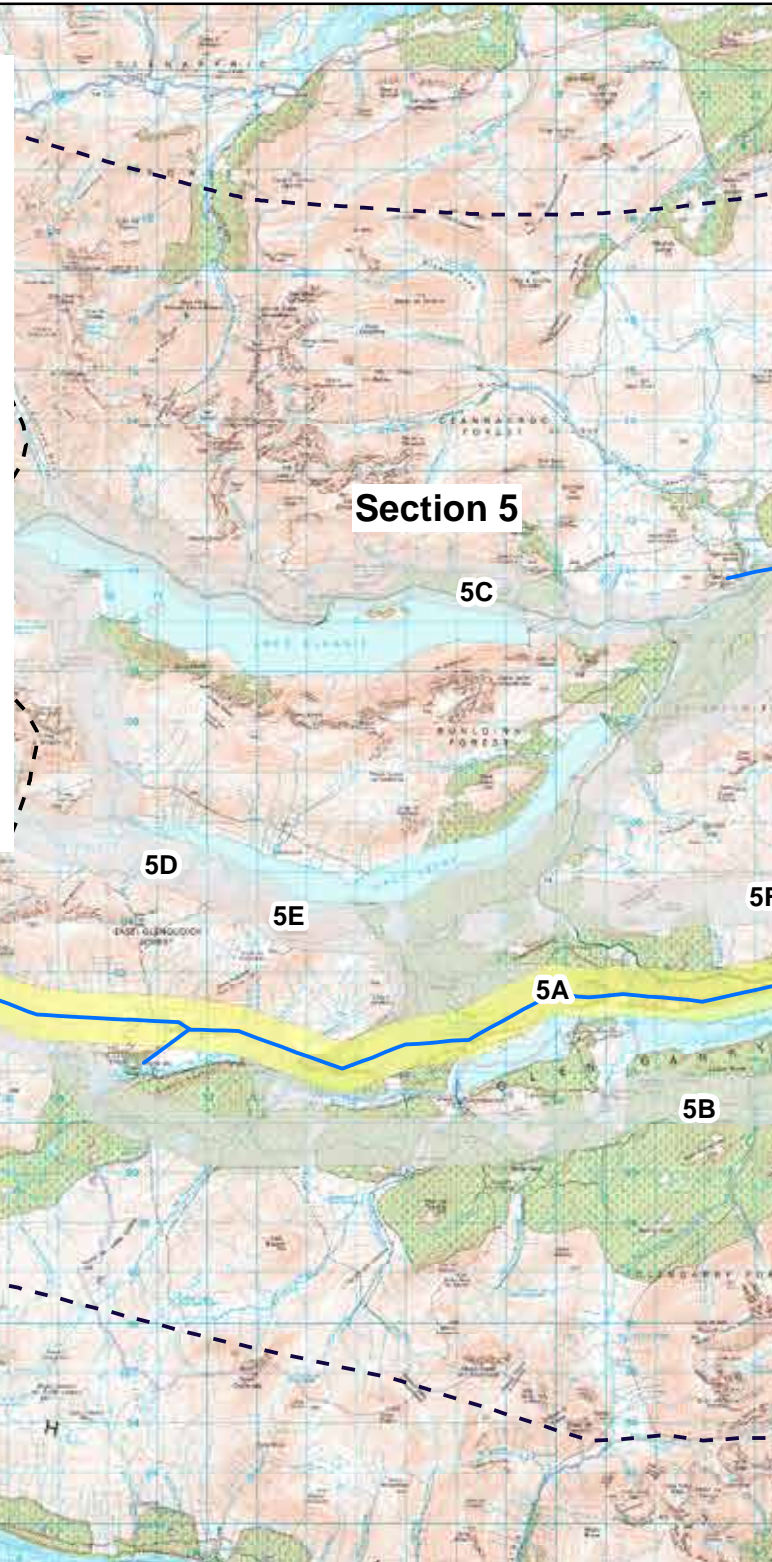
The Preferred Route for this section follows the existing 132kV OHL from Quoich Dam to Invergarry.

This route has been selected as there are fewer landscape and visual sensitivities compared to the other options considered, avoiding any 'novel' impacts to qualifying bird species, in contrast to routes in areas where there is currently no electricity infrastructure.

## Section 6 – Invergarry to Fort Augustus

The Preferred Route for this section largely follows the route of the existing 132kV OHL from Invergarry to Fort Augustus substation, deviating from this to the western extent of Inchnacardoch Forest to Fort Augustus substation.

This route has been selected as it avoids Auchterawe, reducing the potential for impacts on visual amenity and landscape character in the area. However, the potential for cumulative effects in the area would require further consideration. All potential options considered would require some removal of forestry to accommodate a new or widened wayleave.

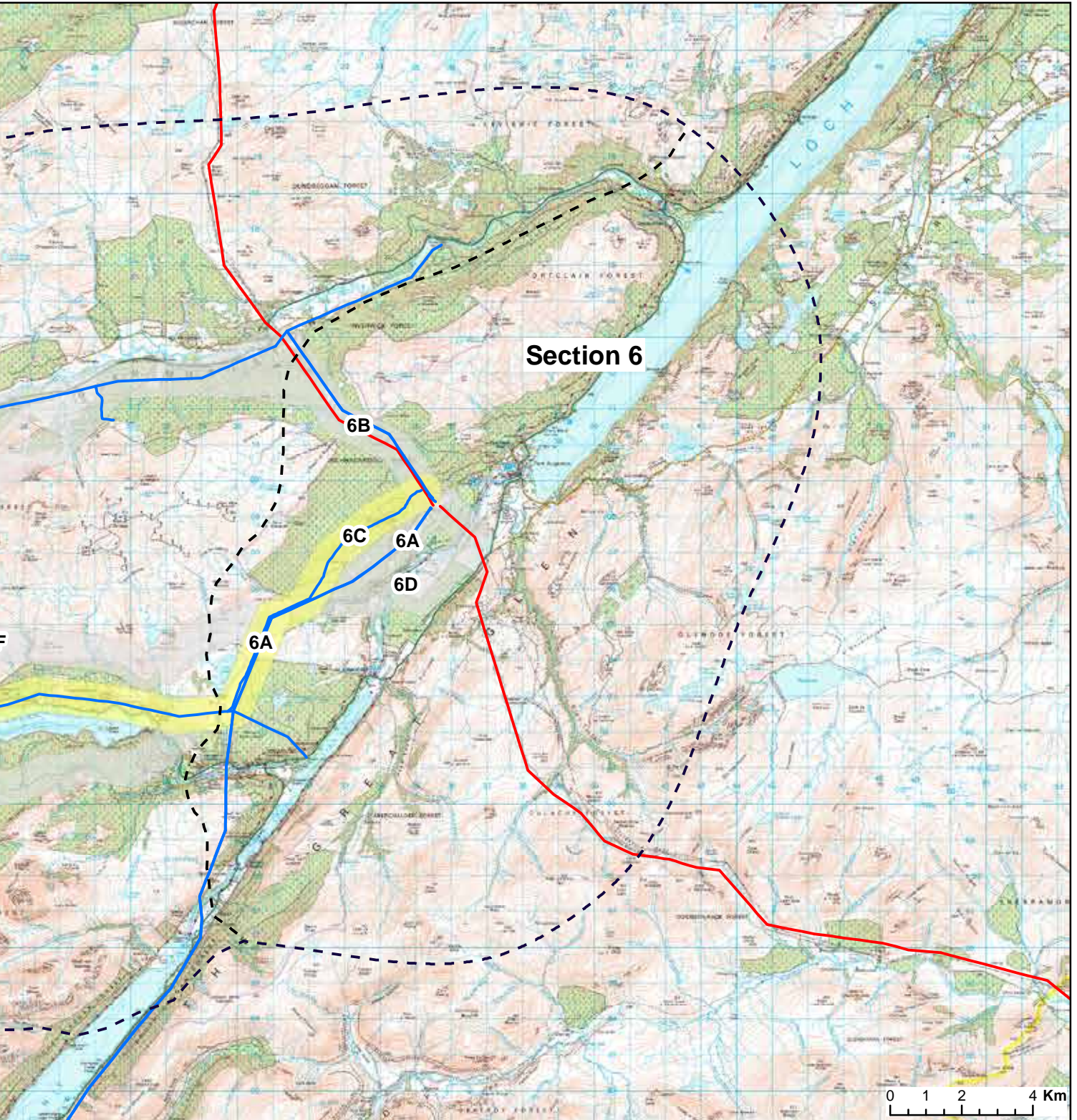


**Legend**

- Preferred Route
- Alternative Route
- Existing 132kV OHL
- Existing 275kV OHL

Reproduced by permission of Ordnance Survey on behalf of HMSO. Crown copyright and database right 2020 all rights reserved. Ordnance Survey Licence number 0100019808.







# What happens now and how do I have my say?

We understand and recognise the value of the feedback provided by members of the public during all engagements and consultations. Without this valuable feedback, the project development team would be unable to progress projects and reach a balanced proposal.

We are keen to receive your views and comments in regards to the following questions:

- Have we explained the change to the need for this Project adequately?
- Have we adequately explained the reasons why the capacity of the line has to increase which will result in changes to the existing infrastructure along its route?
- Have we explained the methodology taken to reassess the preferred route for the new project requirements adequately?
- Are there any factors, or environmental features, that you consider may have been overlooked during the selection of the electricity transmission infrastructure requirements and route reassessment process?
- Do you have any other comments about the project need, transmission infrastructure requirements or preferred route?

## Comments

Your views and comments can be provided to the project team by completing a feedback form or by writing to Lisa Marchi, Community Liaison Manager. The closing date for this consultation period is **Friday 26 June 2020**.

All received feedback will be assessed and the proposed options adapted where necessary.

## Community Liaison Manager, Lisa Marchi



[lisa.marchi@sse.com](mailto:lisa.marchi@sse.com)



07825 015 507



Lisa Marchi-Grey  
Scottish and Southern  
Electricity Networks,  
10 Henderson Road,  
Inverness, IV1 1SN



## Additional information

Information will also be made available via the project webpage and social media channels:

### Project Website:

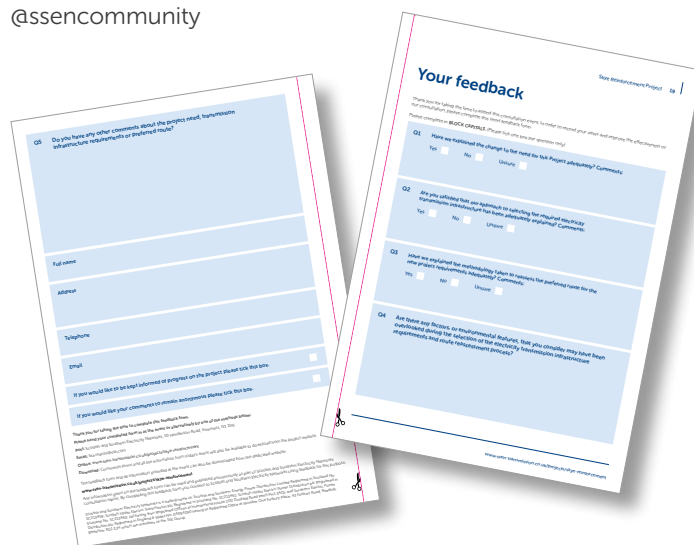
[www.ssen-transmission.co.uk/projects/skye-reinforcement](http://www.ssen-transmission.co.uk/projects/skye-reinforcement)

### Follow us on Twitter:

@ssencommunity

### Follow us on Facebook:

@ssencommunity



# Your feedback

Thank you for taking the time to attend this consultation event. In order to record your views and improve the effectiveness of our consultation, please complete this short feedback form.

Please complete in **BLOCK CAPITALS**. (Please tick one box per question only)

**Q1** Have we explained the change to the need for this Project adequately? Comments:

Yes  No  Unsure

**Q2** Have we adequately explained the reasons why the capacity of the line has to increase which will result in changes to the existing infrastructure along its route? Comments:

Yes  No  Unsure

**Q3** Have we explained the methodology taken to reassess the preferred route for the new project requirements adequately? Comments:

Yes  No  Unsure

**Q4** Are there any factors, or environmental features, that you consider may have been overlooked during the selection of the electricity transmission infrastructure requirements and route reassessment process?



**Q5 Do you have any other comments about the project need, transmission infrastructure requirements or preferred route?**

**Full name**

**Address**

**Telephone**

**Email**

**If you would like to be kept informed of progress on the project please tick this box.**

**If you would like your comments to remain anonymous please tick this box.**

Thank you for taking the time to complete this feedback form.

Please hand your completed form in at the event or alternatively by one of the methods below:

**Post:** Scottish and Southern Electricity Networks, 10 Henderson Road, Inverness, IV1 1SN

**Email:** [lisa.marchi@sse.com](mailto:lisa.marchi@sse.com)

**Online:** [www.ssen-transmission.co.uk/projects/skye-reinforcement](http://www.ssen-transmission.co.uk/projects/skye-reinforcement)

**Download:** Comments forms and all the information from today's event will also be available to download from the project website.

The feedback form and all information provided at the event can also be downloaded from the dedicated website:

**[www.ssen-transmission.co.uk/projects/skye-reinforcement](http://www.ssen-transmission.co.uk/projects/skye-reinforcement)**

Any information given on the feedback form can be used and published anonymously as part of Scottish and Southern Electricity Networks consultation report. By completing this feedback form you consent to Scottish and Southern Electricity Networks using feedback for this purpose.

Scottish and Southern Electricity Networks is a trading name of: Scottish and Southern Energy Power Distribution Limited Registered in Scotland No. SC213459; Scottish Hydro Electric Transmission plc Registered in Scotland No. SC213461; Scottish Hydro Electric Power Distribution plc Registered in Scotland No. SC213460; (all having their Registered Offices at Inveralmond House 200 Dunkeld Road Perth PH1 3AQ); and Southern Electric Power Distribution plc Registered in England & Wales No. 04094290 having its Registered Office at Number One Forbury Place, 43 Forbury Road, Reading, Berkshire, RG1 3JH which are members of the SSE Group.



## ANNEX 3 – POSTER VIRTUAL EVENTS – JUNE 2020

# SSEN Transmission invites you to come and share your views with us

## What is happening?

SSEN Transmission is holding a three **Virtual Consultation Exhibition** to gain views and feedback on our proposals to reinforce the high voltage electricity networks, from Ardmore on the Isle of Skye, to Fort Augustus.

## Why is the Skye reinforcement project required?

**Securing supply:** The current overhead line was constructed between 1956 and 1989, and after a long service is now reaching the end of its life.

**Connecting renewables:** There is demand to connect new renewable electricity generation on Skye, this requires an increase in capacity of the overhead line.

**Network for net zero:** SSEN intends to 'future proof' the replacement line to allow the connection of additional renewables to help meet Government 'net zero' climate change targets. Supporting the transition to 'net zero' emissions.

The virtual consultation events have been designed to be as interactive as face to face events, allowing for presentation of key project information and plans, as well as providing an opportunity to ask questions about the project. Visitors will be able to engage directly with the project team, via a live chat function, where they can ask any questions they might have about the project and share their feedback on the current proposals.

To find out how you can join the interactive virtual consultation visit [ssen-transmission.co.uk](http://ssen-transmission.co.uk) to find out more.

## The virtual consultation events will be taking place on:

**9 June 2020**  
14:00 – 16:00

**10 June 2020**  
10:00 – 12:00

**11 June 2020**  
18:00 – 20:00

If you have any questions, please do not hesitate to contact the **Community Liaison Manager**:

### Lisa Marchi



[lisa.marchi@sse.com](mailto:lisa.marchi@sse.com)



07825 015 507



Lisa Marchi-Grey

Scottish and Southern  
Electricity Networks,  
10 Henderson Road,  
Inverness, IV1 1SN

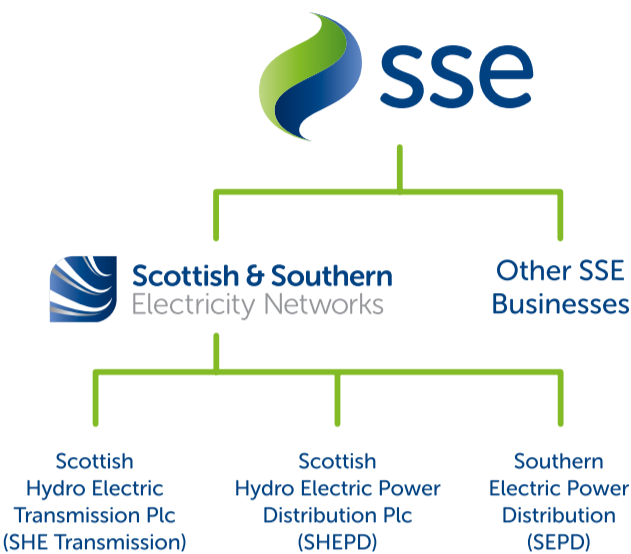


@ssencommunity

## ANNEX 4 – ALIGNMENT STAGE EXHIBITION BOARDS – SEPTEMBER 2021

# Who we are

We are Scottish and Southern Electricity Networks, operating under licence as Scottish Hydro Electric Transmission plc (SHE Transmission) for the transmission of electricity in the north of Scotland.



In total we maintain about 5,000km of overhead lines and underground cables – easily enough to stretch across the Atlantic from John O’Groats all the way to Boston in the USA.

Our network crosses some of the UK’s most challenging terrain – including circuits that are buried under the seabed, are located over 750m above sea level and up to 250km long.

The landscape and environment that contribute to the challenges we face also give the area a rich resource for renewable energy generation. There is a high demand to connect from new wind, hydro and marine generators which rely on Scottish and Southern Electricity Networks to provide a physical link between the new sources of power and electricity users. Scottish and Southern Electricity Networks is delivering a major programme of investment to ensure that the network is ready to meet the needs of our customers in the future.

## Our responsibilities

We have a licence for the transmission of electricity in the north of Scotland and we are closely regulated by the energy regulator Ofgem.

Our licence stipulates that we must develop and maintain an efficient, co-ordinated and economical system of electricity transmission.

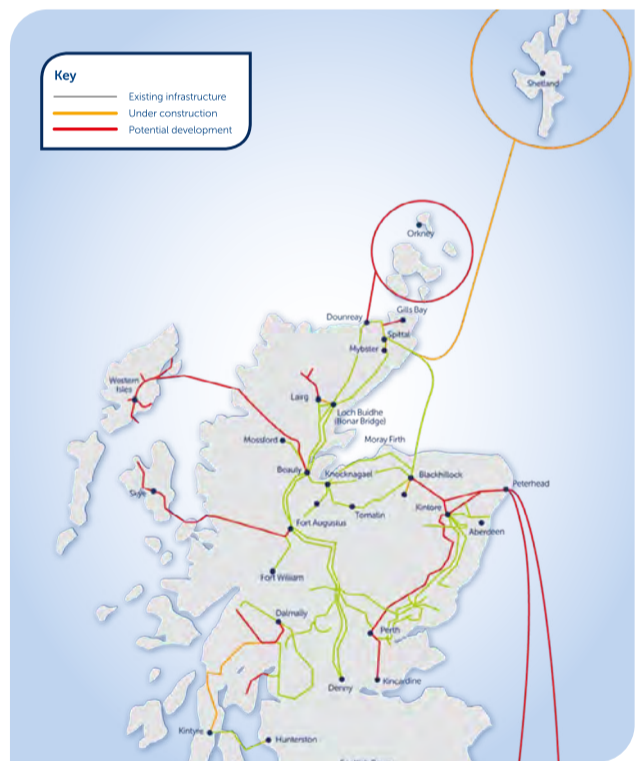
## What is the difference between transmission and distribution?

Electricity Transmission is the transportation of electricity from generating plants to where it is required at centres of demand.

The Electricity Transmission network, or grid, transports electricity at very high voltages through overhead lines, underground cables and subsea cables. Our transmission network connects large scale generation, primarily renewables, to central and southern Scotland and the rest of Great Britain. It also helps secure supply by providing reliable connection to the wider network of generation plants.

The Electricity Distribution network is connected into the Transmission network but the voltage is lowered by transformers at electricity substations, and the power is then distributed to homes and businesses through overhead lines or underground cables.

## Overview of transmission projects







# What is the Skye Reinforcement Project, and why is it needed?

The Skye Reinforcement Project is the replacement of the existing overhead electricity transmission line that runs from Fort Augustus to Ardmore in the north of Skye. Over the past couple of years, several assessments have been carried out to determine the condition of the existing OHL and associated electricity infrastructure, including existing substation equipment.

These assessments identified that the current line which was constructed in three distinct sections between 1956 and 1989 is now reaching the end of its operational life. Its planned replacement is essential to maintain security of supply to homes and businesses along its route, as well as to the Western Isles, which is supplied by two subsea cables from Ardmore point. In addition, more applications from new generation developers in Skye have been received over that period. This caused SSEN Transmission to develop a needs case for the project that ensured that the best sustainable long-term solutions was identified.

Given the scale of the replacement project, SSEN Transmission intends to 'future proof' the replacement line to allow the connection of additional renewables to help meet Government 'net zero' climate change targets. Taking 'a build it once, built it right approach' which it hopes will greatly reduce the need for additional major works in the future, helping keep local disruption to a minimum.



## The scope of the project

The existing 132kV overhead line (OHL) from Fort Augustus to Ardmore on the Isle of Skye is a main artery in the Highland transmission network and provides the sole connection from the mainland electricity transmission system to Skye and the Western Isles and is essential for maintaining security of supply in the area.

To ensure security of supply to homes and businesses in the region and facilitate the connection of new renewable energy to the grid, SSEN Transmission is proposing the construction of a new overhead line, which will comprise of steel lattice towers, broadly similar in height to the existing towers, wood pole overhead line and sections of underground cable.

The main elements of the project are:

- From Fort Augustus substation to Broadford substation it is proposed to construct a new double circuit 132kV OHL comprising of steel lattice structures. The existing Fort Augustus to Abercaldier 132kV wood pole OHL, and the existing 132kV OHL's between Abercaldier and Broadford would be dismantled and removed once the new OHL is operational;
- Between Broadford substation and Edinbane substation, the existing single circuit wood pole trident 132kV OHL would be replaced with a new 132kV OHL comprising of steel lattice structures. The existing OHL would be dismantled and removed once the new OHL is operational;
- Between Edinbane substation and Ardmore substation, the existing single circuit wood pole 132kV OHL would be replaced with a new higher capacity 132kV wood pole OHL;
- A new Indoor Gas Insulated Substation adjacent to the existing substation at Broadford;
- A new indoor Gas Insulated Substation, Grid Supply Point and Wind Farm Connection, south west of the existing substation at Edinbane; and
- In order to maintain a supply of energy to the region during construction, the existing OHL would remain in place and following completion of the new line, the existing will be dismantled.

# The story so far and what's next

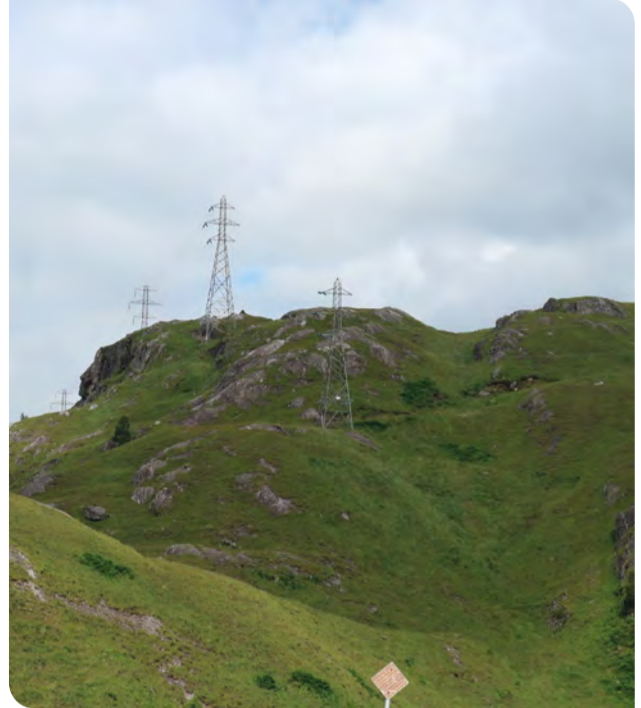
## What's been done

We consulted with stakeholders in 2020 regarding the need and scope for the project and asked feedback on the preferred route for the new 132kV OHL. We also published a Report on Consultation in November 2020 which summarised the feedback we had received and how we were going to respond to that feedback.

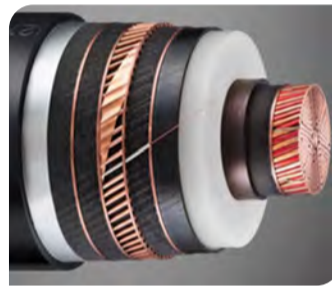
We have been working to ensure any comments or concerns raised have informed the design as it has progressed, and this will continue as we move into the next phase of detailed design and EIA stage of the project.

Some of the significant design decisions that have been put forward to ensure we progress a project which has balanced the technical, cost, environmental and stakeholder feedback requirements include:

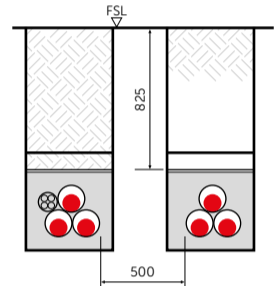
- Ensuring the OHL alignment is optimized as far as possible to take account of sensitive environmental receptors, reduce landscape and visual constraints, take account of existing land use and avoid communities as far as practicable;
- Develop complex design mitigations within the Cuillins National Scenic Area (Section 2) in the form of underground cabling in response to concerns related to potential impacts on landscape and visual issues;
- Carried out further detailed assessment work within Section 3, including working in close collaboration with specialist environmental consultants to commence a Habitats Regulations Assessment (HRA) and detailed micro-siting of the proposed development to avoid the most sensitive habitats where the technical parameters allowed. This has allowed us to identify what we believe is a feasible design solution which removes any potential landscape and visual impacts that may be associated with a preferred route through Glen Arroch that was presented at the previous consultation stage. This is subject to conclusion of the HRA and targeted consultation with key statutory bodies; and
- Develop complex design mitigations within Section 6 in the form of underground cabling in response to concerns related to current and future land use, and volume of existing electricity infrastructure in this area.



Section 4 - Kinloch Hourn



Underground Cable



Typical double circuit cable arrangement

## What we are seeking feedback on

The design is well under way and we are progressing with the technical details such as ground investigations, micro-siting of tower locations, detailed design of the underground cable sections and micro-siting of the access tracks. We will also be kicking off the full EIA stage of the project.

As such, we would like to ensure your views on our proposals so far are understood and considered in these final stages of the project and prior to coming to a proposed development for consent application. As such we have included a set of questions on the feedback forms and would be grateful if you are able to submit your views on our preferred design solution.





# What are we consulting on today?

Following engineering and environmental assessments, we have identified a suitable alignment and design solution for the replacement line. With the work now nearing completion, SSEN Transmission are now presenting our preferred alignment and design solution and seeking your feedback on these proposals.

The proposed alignment, which broadly follows the existing route, has been developed in a systematic manner, incorporating stakeholder feedback to develop an alignment which is technically feasible, economically viable and could be anticipated to cause the least disturbance to the environment and those living in it, working in it, visiting or using it for recreational purposes.

The alignment and design solution that has taken into consideration the views of our stakeholders ahead of the submission of the Section 37 consent application in summer 2022.

## Mitigations

In line with stakeholder feedback SSEN Transmission are presenting proposals for two sections of underground cable. Underground cable installation requires significant groundworks, requiring greater access and can have a greater impact on habitats and the surrounding environment.

Therefore, it has not been viable to consider undergrounding for the entire line route.

However, in areas of particular sensitivity a preferred design solution using underground cable has been selected to mitigate likely significant environmental effects, or to facilitate rationalisation of the electricity network where it can address specific issues, subject to environmental and engineering considerations.

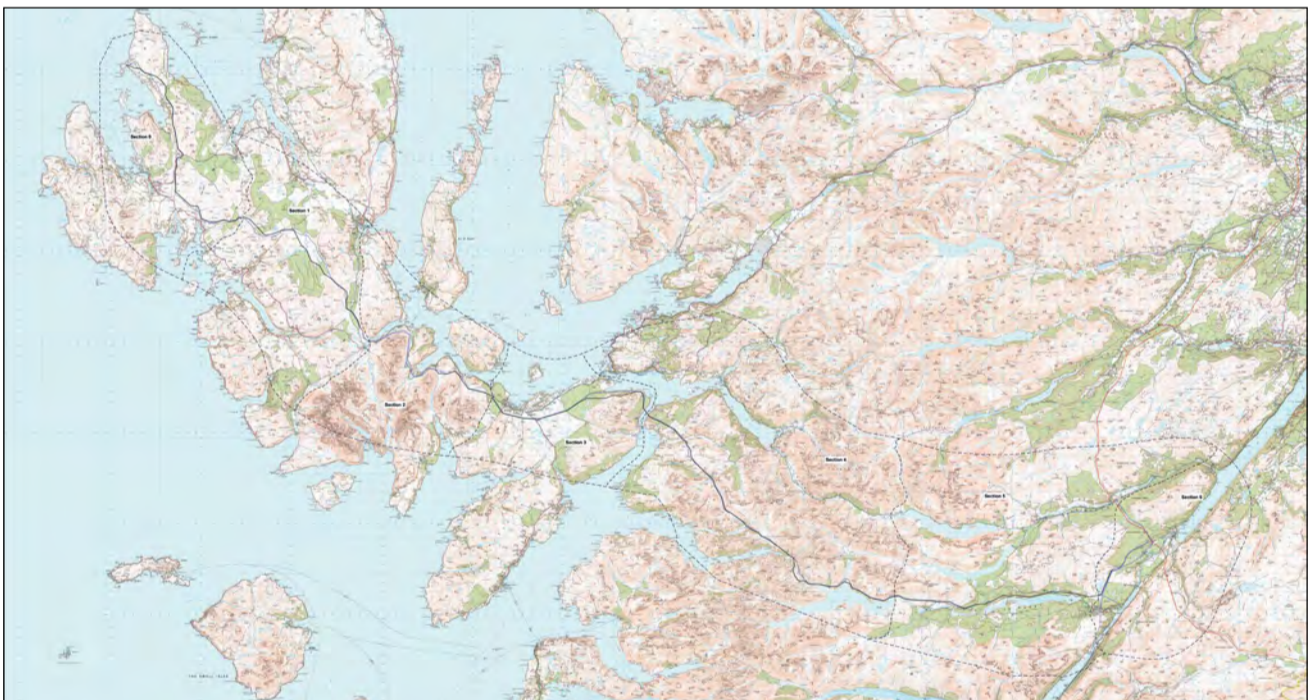
These areas are:

- 14km of underground cable as line passes the Cuillin Hills
- 7km of underground cable as the line joins Fort Augustus substation

In response to community views expressed, we are seeking feedback on a preferred alignment that follows closer to the existing OHL and does not follow a new route through Glen Arroch, as proposed in our June 2020 consultation.

## Broadford and Edinbane Substation Proposal of Application Notice (PAN)

In addition, a separate section of the consultation event will be dedicated to Broadford Substation and Edinbane Substation, where work is required to reinforce and extend the existing substations. We welcome your feedback on these proposals at this time. The PAN process is a key first step in the town and country planning process for these sites and kickstarts a 12 week consultation period for feedback and comments.







# Technical Solutions to Meet the Project Need

## Existing Infrastructure

The existing 132kV overhead line which connects Fort Augustus and Skye consists of four distinct sections, which were constructed at different times over the past 65 years in response to changing needs. These include:

- Fort Augustus to Abercalder – Wooden pole
- Abercalder to Quoich – Steel lattice towers
- Quoich to Broadford – Steel lattice towers
- Broadford to Ardmore – Wooden pole

The existing infrastructure is approaching the end of its operational life and a significant capacity increase is required to meet the needs of renewable generators looking to connect. To maintain security of supply and carry the power required to support net zero emissions targets, it has been deemed not feasible to upgrade the existing overhead line infrastructure. As such the existing 132kV overhead lines between Fort Augustus and Ardmore will be replaced.

Please note the Abercalder to Quoich section is presently being replaced with a wood pole OHL due to asset condition. This will ensure continued security of supply from Quoich Power Station and during the construction phase, can act as a temporary diversion for the development.

## Fort Augustus to Edinbane

There is a greater need for higher capacity power transfer between Fort Augustus and Edinbane, as well as more technically challenging terrain to cross. In these areas, a steel lattice tower construction is required to meet the identified system need.

These towers will be approximately 28-33 meters in height.



Figure 2 An example of a Steel Lattice L7 Tower Structure

## Edinbane to Ardmore

Less power will be transferred between Edinbane and Ardmore. A new trident H wood pole is suited to the terrain in this area and will be of sufficient power capacity to meet the identified electrical need.



Figure 1 An Example of a Trident H wood pole structure



Figure 3 An Example of Underground Cable installation



# Consideration of Alignment Options and Design Solutions

The consideration of alignment options and design solutions brings together work by three main disciplines:



**Engineering Team**

Who identify engineering constraints and where overhead lines and cables can be installed from a construction and operational perspective;



**Environmental Team**

Who identify key environmental constraints (aspects) along the routes which the new infrastructure could impact upon; and



**Land Team**

Who engage with landowners to identify key land use constraints.

## Identifying Key Environmental Aspects

Key environmental aspects are identified through a mixture of desktop assessment and site surveys. Work undertaken during this phase of the project development has included detailed assessment of the alignment options by identifying environmental aspects which could constrain the proposed development.

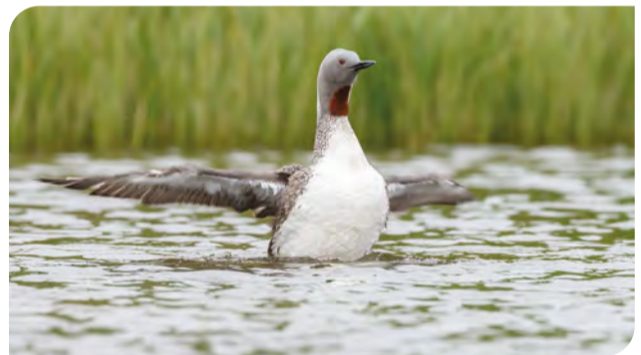
**A suite of specialist environmental surveys have been undertaken by:**

- Landscape architects;
- Archaeologists;
- Ornithologists and ecologists;
- Geologists and hydrologists.

**to ensure detailed knowledge of potential constraints and provide advice on alignment options, micro-siting opportunities for positioning towers and indicative construction access.**

**The key environmental aspects that have informed the alignment options and design solutions include:**

- Landscape character and visual amenity aspects;
- Special Protected Areas (SPA), for birds;
- Special Areas of Conservation (SAC), for habitat;
- Sites of Special Scientific Interest (SSSI);
- Local Nature Conservation Sites;
- National Scenic Areas;
- Protected Species and habitats
- Scheduled Monuments;
- Peat/ground conditions/water environment.







# Consideration of Alignment Options and Design Solutions



Visualisation of steel structures passing Loch Sligachan (Cuillin Hills NSA)

## SSEN Transmission Engineering and Construction Contractor

SSEN Transmission engineering team engaged an experienced OHL construction contractor to carry out a detailed desk-based and site walkover survey to explore the advantages, disadvantages and constructability of OHL alignment options. An OHL alignment was identified on the basis of it being the most technically feasible and economically viable alignment, giving due consideration to a range of technical, environmental, and cost criteria over the construction and operation phases.

SSEN Transmission Engineering team has been working alongside the contractor to develop a project specific access strategy, informed by NatureScot's guidance on access tracks in the Scottish Uplands and our in-house engineering knowledge. The routing of tracks has been a key consideration in the evolving

design, making best use of existing forestry and estate tracks with a focus on upgrading where possible rather than creation of new access tracks. Studies have also been undertaken on the choice of technology, including appropriate ways to mitigate environmental effects including subsea and land cabling, alternative structures (NESTS) and OHL routes.

## Land Management

SSEN Transmission Land Management team are working closely with land owners to ensure working practices are taken into account, with potential land use constraints recognised as an important part of the overall design process.

## Weekly Design Meetings

As the alignment work progressed on the ground, weekly design meetings with the contractor, SSEN Transmission engineering, environmental and land management teams, and external environmental consultants

were undertaken to discuss the alignment and look at potential localised alternatives to avoid and/or minimise potential environmental effects and matters concerning land use.

The design process has been facilitated by the use of powerful GIS and visualisation tool kits, and extensive team and specialist site walkover surveys.

## Consultation Responses

Consultation responses received during the routing stage of the project in 2020 have been used to inform the design as it has progressed, including further detailed studies on the alternatives routes in some sections of the project, as reported in the Report on Consultation published in November 2020.

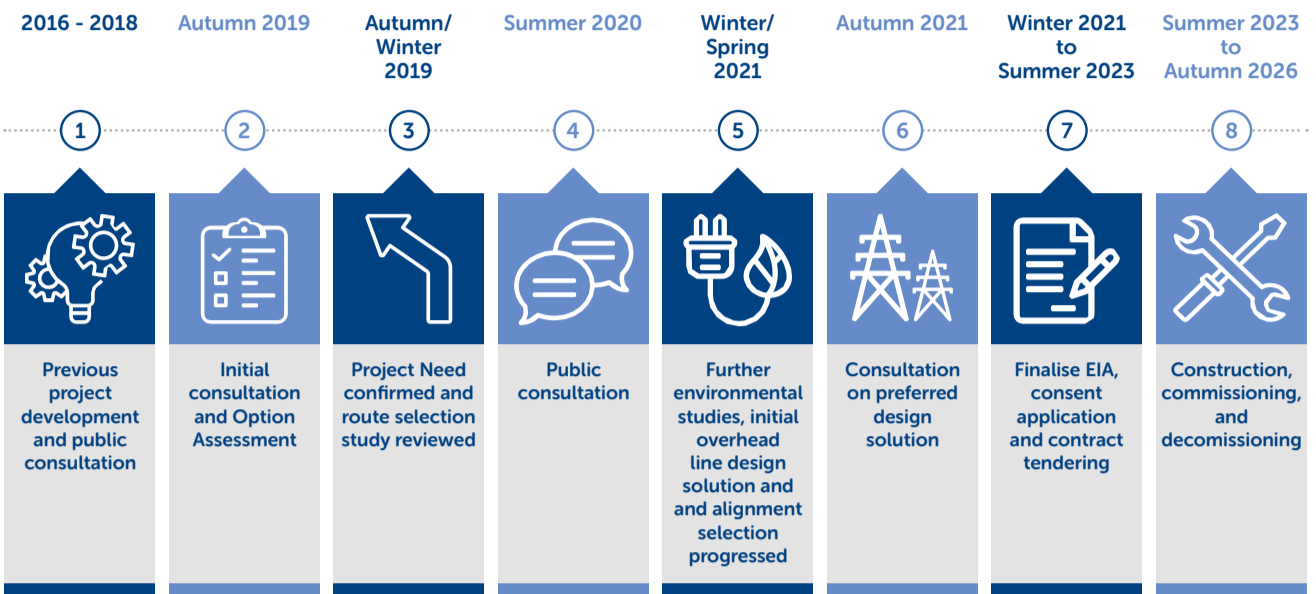
We have also undertaken workshops with statutory authorities throughout the design process to seek preliminary feedback on the preferred alignment and design solution.

## Example of GIS Modelling and onsite surveys





# Project Timeline



## 1 Previous project development and public consultation

Consultation and development work on a proposed additional overhead line between the Isle of Skye and Fort Augustus. The project driver was to enable renewable generation on Skye to connect to the transmission network. This project was stopped in 2018 to allow for a more holistic and enduring approach to meet future security of supply needs and support the transition to net zero.

## 2 Initial consultation and Option Assessment

Consultations with key statutory bodies such as Scottish National Heritage, The Highland Council, Historic Environment Scotland, Forestry Commission and Scottish Environment Protection Agency were undertaken to seek feedback on the project and outline the assessment methodologies used to determine the changes to project need.

## 3 Project need confirmed and route selection reviewed

Project needs and OHL route options reviewed and preferred route identified.

## 4 Public consultation

Route consultation with statutory, non-statutory bodies and communities on initial project proposals. Document detailing scope of consultation is published.

## 5 Further environmental studies, initial overhead line design and alignment selection progressed

Undertake further environmental studies and engineering design to identify the preferred design solution and alignment for the overhead line. Confirm the preferred alignment for the OHL and establish what structure types will be needed, including for any mitigation informed by early EIA work.

## 6 Consultation on preferred alignment selection

Undertake consultation on the preferred alignment for the overhead line and hold further public consultation event.

## 7 Consent application & contract tendering

Confirm the overhead line alignment and design solution, and publish the Report on Consultation. Progress Environmental Impact Assessment (EIA), negotiations with landowners, preparation and submission of Section 37 consent application, contract tendering and procurement detailed design.

## 8 Construction and commissioning

Undertake all onsite construction works, including energisation of the new OHL circuit and decommissioning and removal of the old OHL infrastructure.





# Broadford Substation Project – Need and Site Selection

## Project Need

There is a requirement to reinforce and extend the existing substation, driven by the Skye Reinforcement project and the associated wind farm connection commitments.

A new Indoor Gas Insulated Substation is proposed to be constructed on adjacent SSEN Transmission owned land to the east and south of the existing substation at Broadford.

## Site Selection – why the existing site?

- It is efficient and optimal to utilise the existing substation sites for the required infrastructure works.
- SSEN Transmission propose utilising SSEN Transmission owned land adjacent to the existing substation, eliminating the need to extend the ownership boundary.
- Facilitates offline construction, minimising the impact on the existing infrastructure and electricity transmission and distribution systems supplying customers.



Existing Broadford Substation looking eastwards



SSEN Transmission owned land east of existing substation





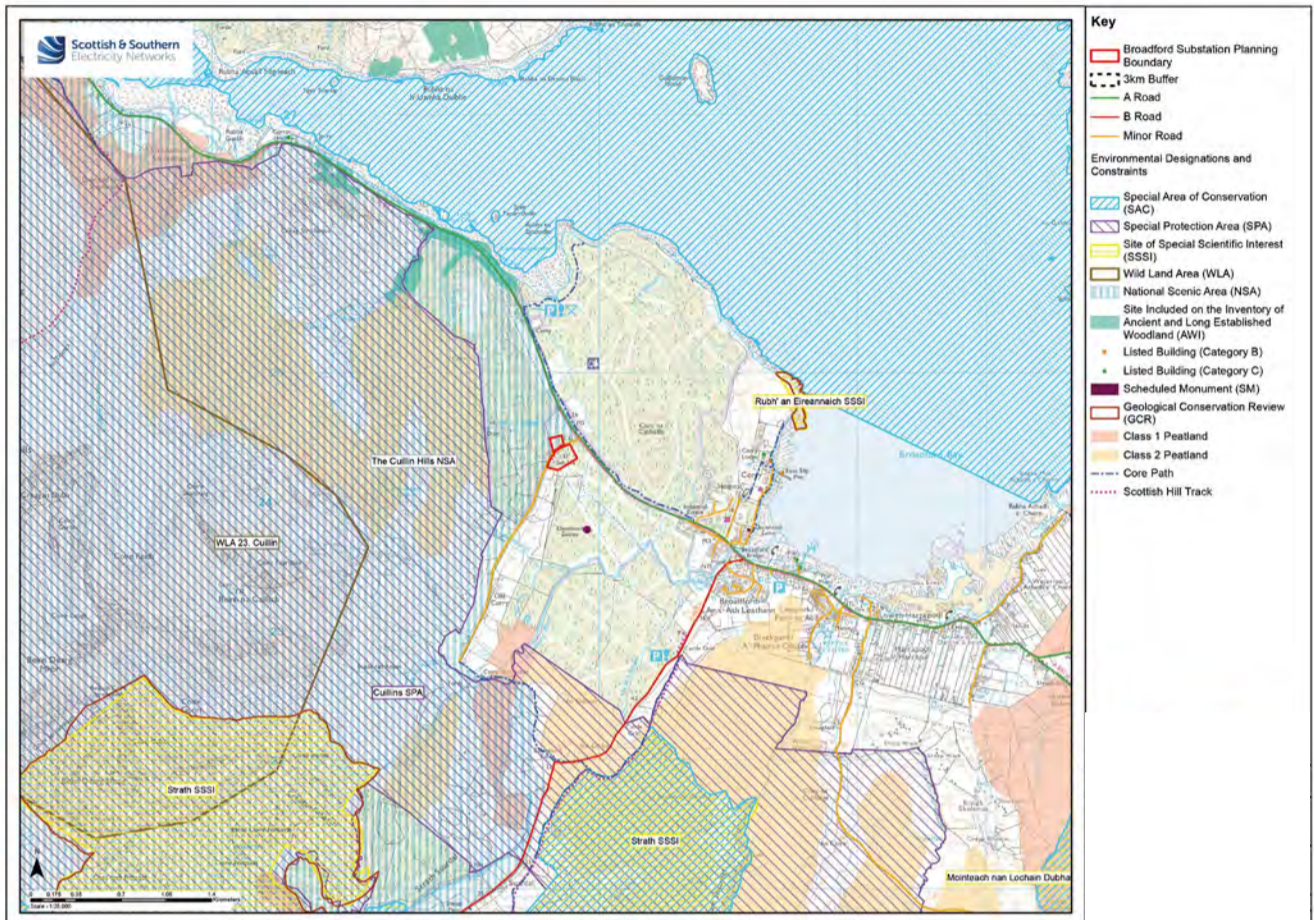
# Broadford Substation Proposals – Site Layout



- Existing Broadford substation shown in black to the North West of the site.
- Proposed new Broadford substation to the South and East of the existing substation on SSEN owned land.
- New 132kV Overhead Line routes indicated running South East to North West.
- Temporary Construction Welfare area indicated on Old Corry Road off A87.
- Access will be via the existing track and public road.



# Broadford Substation Project – Key Environmental Considerations



## The key environmental considerations for the development of a substation extension in this location include:

- Landscape and visual receptors. The site is surrounded by commercial forestry plantation but is located on the very edge of the Cuillin Hills National Scenic Area (NSA). Potential effects in relation to the Cuillin Hills NSA, landscape character and visual receptors within the Broadford area will require consideration. A full landscape and visual assessment will be carried out and opportunities to mitigate effects would be considered in the form of appropriate landscape mitigation, where required;
- The Cuillins Special Protection Area (SPA) is located approximately 600m to the west of the proposed substation site. Potential effects on the qualifying features (golden eagle) of the SPA, as well as other potential ornithological constraints, will be considered;
- Habitats within the vicinity of the site comprise commercial forestry plantation and semi-improved neutral grassland. Minimising effects on sensitive habitats and deeper 4 areas of peat will be informed by existing habitat data and further survey work as required;
- Potential effects on European Protected Species will be informed by protected species surveys. Any identified effects could be reduced or eliminated by adopting appropriate mitigation such as the use of Species Protection Plans;
- Local hydrological constraints;
- Felling requirements within the commercial forestry plantation;
- Consideration of potential effects on cultural heritage;
- Transportation of materials and abnormal load requirements to the site; and
- Potential effects of construction and operational noise.





# Broadford Substation Programme and next steps

## Next Steps

- Detailed design
- Environmental surveys
- EIA screening
- Completion of an environmental survey

## Indicative Programme

- Initial Consultation Period starts - June 2021
- Planning Submission - June 2022
- Contractor Award - July 2023
- Construction Starts on site - August 2023
- Construction Finishes - December 2025



Portree Harbour, Isle of Skye





# Edinbane Substation Project – Need and Site Selection

## Project Need & Proposals

There is a requirement to reinforce and extend the existing substation, driven by the Skye overhead line project and the associated wind farm connection commitments.

A new Indoor Gas Insulated Substation, Grid Supply Point and Wind Farm connection is proposed to be constructed on land to the South and West of the existing substation at Edinbane.

### Site Selection – why the existing site?

- Proposed new substation site is adjacent to the existing substation site on land to the West and South, utilising existing screening to the West and natural topography to the North and East to minimise the visual impact.
- New substation buildings and associated infrastructure have been sited adjacent to the existing substation to limit the disturbance on the surrounding environment/ecology whilst facilitating offline construction.
- Buried HV cable connections proposed to connect the new substation to the overhead line, increasing design flexibility and minimising the footprint.
- A new 132kV Overhead Line terminal tower to cable interface compound is proposed close to the existing overhead line, reducing the number of new transmission towers that would be required.
- Proposed additional 132/33kV Grid Transformer will be located in buildings reducing noise and visual impact.



Eastern fenceline of the existing substation



View west from wind farm access road



# Edinbane Substation Proposals – Site Layout

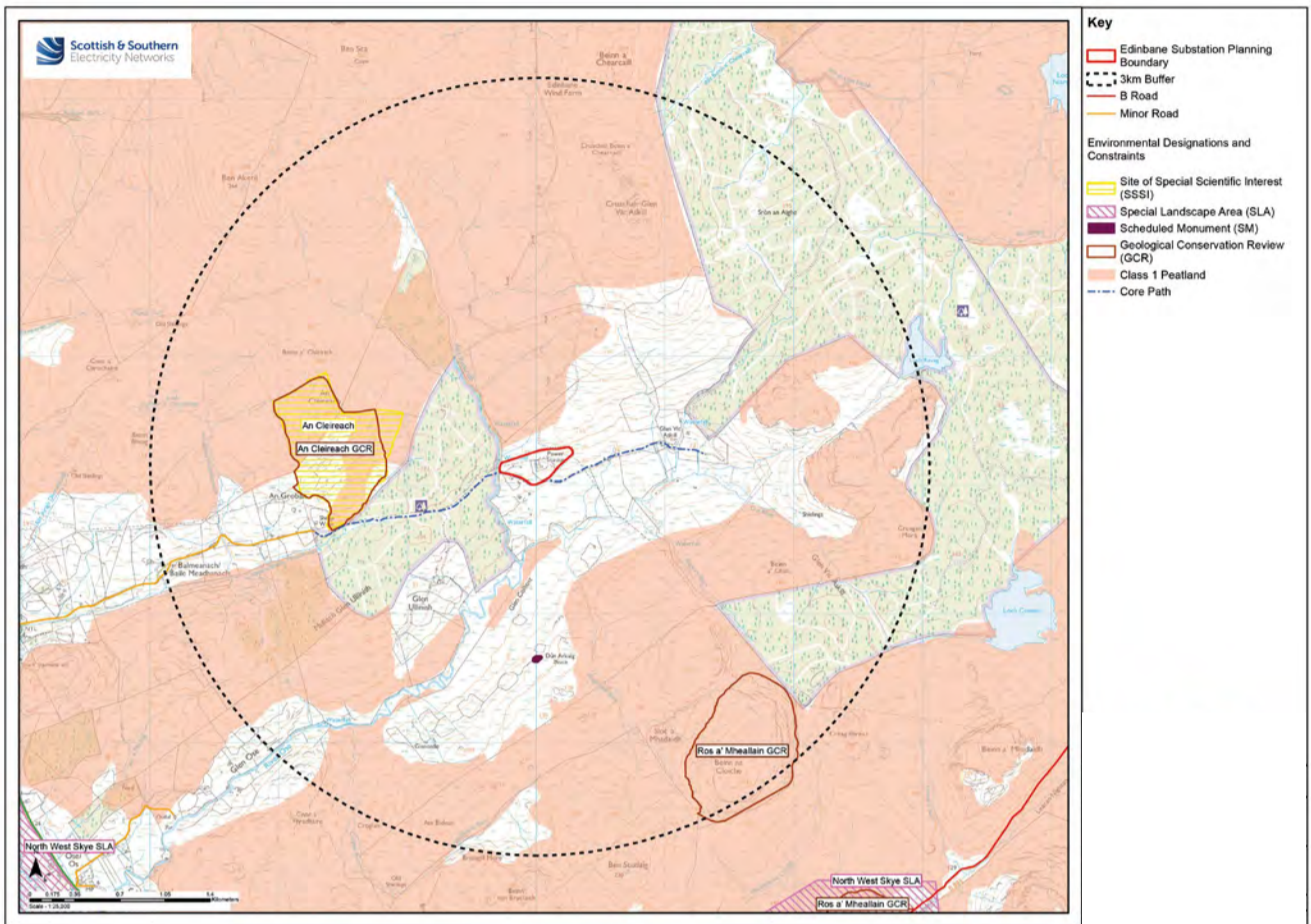


- Existing Edinbane substation shown to the North East of the site.
- Proposed new Edinbane 132kV Collector substation, Grid Supply Point and Glenn Ullinish Wind Farm connection shown to the West and South West of the existing substation on land to be procured by SSEN.
- New 132kV Overhead Line route indicated running South East to North West in black and sections of existing Overhead Line that are to be removed shown in green.
- Temporary Construction Welfare area indicated to the North East of the existing substation.





# Edinbane Substation Project – Key Environmental Considerations



## The key environmental considerations for the development of a substation extension in this location include:

- Potential effects on landscape character and visual receptors within the vicinity of the site. A full landscape and visual assessment will be carried out and opportunities to mitigate effects would be considered in the form of appropriate landscape mitigation, where required;
- Potential effects on ornithology and European Protected Species, which will be informed by relevant survey data. It is anticipated that any identified effects could be reduced or eliminated by adopting appropriate mitigation such as the use of Species Protection Plans;
- Habitats within the vicinity of the site comprise semi-improved neutral grassland and wet modified bog. Minimising effects on sensitive habitats and deeper areas of peat will be informed by existing habitat data and further survey work as required;
- Local hydrological constraints;
- Potential effects on recreation given proximity to Loch Caroy to Glen Vic Askill Core Path;
- Consideration of potential effects on cultural heritage;
- Transportation of materials and abnormal load requirements to the site; and
- Potential effects of construction and operational noise.





# Edinbane Substation Programme and next steps

## Next Steps

- Detailed design
- Environmental surveys
- EIA screening
- Completion of an environmental survey

## Indicative Programme

- Initial Consultation Period starts - June 2021
- Planning Submission - June 2022
- Contractor Award - July 2023
- Construction Starts on site - August 2023
- Construction Finishes - December 2025





# What happens now and how do I have my say?

We understand and recognise the value of the feedback provided by members of the public during all engagements, consultations and events. Without this valuable feedback, the Project Development team would be unable to progress projects and reach a balanced proposal to submit for planning.

We are keen to receive your views and comments with regards to the following elements of our projects and will be seeking feedback from members of the public on this exhibition until **Friday 19th November 2021**.

You will find the appropriate feedback forms at the end of this booklet:

We're inviting your comments on our preferred alignment between Ardmore on the Isle of Skye and Fort Augustus Substation in Auchterawe.

For Broadford and Edinbane Substations, we shall shortly be submitting a Town and Country Planning Application and are seeking formal comments ahead of submitting an application to the Highland Council. Please find more information below.

**Broadford Substation** – PAN In regard to the Broadford substation, general comments on the proposals can be made throughout the 12-week period to 19th November 2021. To provide feedback on the proposal or to gain further information on the project, please fill in a Broadford Substation feedback form, visit our virtual consultation events or contact our Community Liaison Manager. Once planning applications have been submitted, the public will have an opportunity to make formal representations to The Highland Council for the proposed Broadford Substation before a decision is made on our application.

**Edinbane Substation** – PAN In regard to the Broadford substation, general comments on the proposals can be made throughout the 12-week period to 19th November 2021.

To provide feedback on the proposal or to gain further information on the project, please fill in a Edinbane Substation feedback form, visit our virtual consultation events or contact our Community Liaison Manager. Once planning applications have been submitted, the public will have an opportunity to make formal representations to The Highland Council for the proposed Edinbane Substation before a decision is made on our application.

## Comments

Your views and comments can be provided to the project team by completing the feedback forms within this booklet, via the project webpage, or by writing to our Community Liaison Manager. All received feedback will be assessed and the proposed options adapted where necessary.

## Community Liaison Manager, Lisa Marchi



[lisa.marchi@sse.com](mailto:lisa.marchi@sse.com)



07825 015 507



**Lisa Marchi**  
Scottish and  
Southern Electricity  
Networks,  
10 Henderson Road,  
Inverness, IV1 1SN



## Additional information

Information will also be made available via the project webpage and social media channels:

### Project website:

[www.ssen-transmission.co.uk/projects/skye-reinforcement](http://www.ssen-transmission.co.uk/projects/skye-reinforcement)

### Follow us on Twitter:

[@ssencommunity](https://twitter.com/ssencommunity)

### Follow us on Facebook:

[@ssencommunity](https://www.facebook.com/ssencommunity)



[@ssencommunity](https://www.facebook.com/ssencommunity)



[@ssencommunity](https://twitter.com/ssencommunity)

[www.ssen-transmission.co.uk/projects/skye-reinforcement](http://www.ssen-transmission.co.uk/projects/skye-reinforcement)



# How do I have my say

Join one of our face to face consultations being held along the entire route or online at our virtual consultation.

The consultation events will be taking place on:

Dunvegan Hall	<b>28 September</b>	<b>15:00 – 19:00</b>
Broadford Hal	<b>29 September</b>	<b>15:00 – 19:00</b>
Glenelg Hall	<b>30 September</b>	<b>15:00 – 19:00</b>
Kyleakin Hall	<b>4 October</b>	<b>15:00 – 19:00</b>
Glengarry Hall	<b>5 October</b>	<b>15:00 – 19:00</b>
Fort Augustus Hall	<b>6 October</b>	<b>15:00 – 19:00</b>
Virtual Consultation	<b>13 October</b>	<b>13:00 – 15:00</b> <b>17:00 – 19:00</b>

Our virtual consultation room will open on 13th October 2021 12th July, where information regarding our proposals will be available alongside opportunities to join the project team for interactive text chat sessions. A link to view the virtual consultation platform will be available on the Skye Reinforcement Webpage

If you are unable to attend one of the face to face events or the live chat sessions, there are still plenty of ways to engage with our team: You can contact us by email, phone or post, please see details for the Community Liaison Manager.

We are happy to arrange (virtual) meetings for individuals or small groups to discuss any areas of interest and if this is something you would like us to facilitate, please contact us as soon as possible.

We are happy to post out copies of this brochure, please contact the Community Liaison Manager to arrange this.

## Feedback

As part of the consultation exercise, we are seeking comments from members of the public, statutory consultees and other key stakeholders.

We kindly request that all comments are received by Friday 19th November 2021. Further information, should you require it, is available on the project webpage or can be made available in printed format by contacting the Community Liaison Manager. The feedback forms in this booklet can be detached and sent back, or you can fill them in online using the form on the project webpages. We do request that any feedback that you wish to be included in the Report on Consultation is received in written format (feedback received via phone calls will be circulated to the project team but would not be included in the Report on Consultation).

All feedback received will be collated, reviewed and included in our subsequent Report on Consultation, along with SSEN Transmission's responses to the topics raised. The report will be published later this year and will be available to view on the project webpage.



## ANNEX 5 – ALIGNMENT STAGE EVENT BOOKLET – SEPTEMBER 2021



# Skye Reinforcement Project

September/October 2021

Overhead Line Alignment and Substation  
Pre-Application Consultation



## The consultation events will be taking place on:

Dunvegan Hall	28 September	15:00 – 19:00
Broadford Hall	29 September	15:00 – 19:00
Glenelg Hall	30 September	15:00 – 19:00
Kyleakin Hall	4 October	15:00 – 19:00
Glengarry Hall	5 October	15:00 – 19:00
Fort Augustus Hall	6 October	15:00 – 19:00
Virtual Consultation	13 October	13:00 – 15:00 17:00 – 19:00



# Who We Are

We are Scottish and Southern Electricity Networks Transmission (SSEN Transmission), operating under licence as Scottish Hydro Electric Transmission Plc (SHE Transmission).

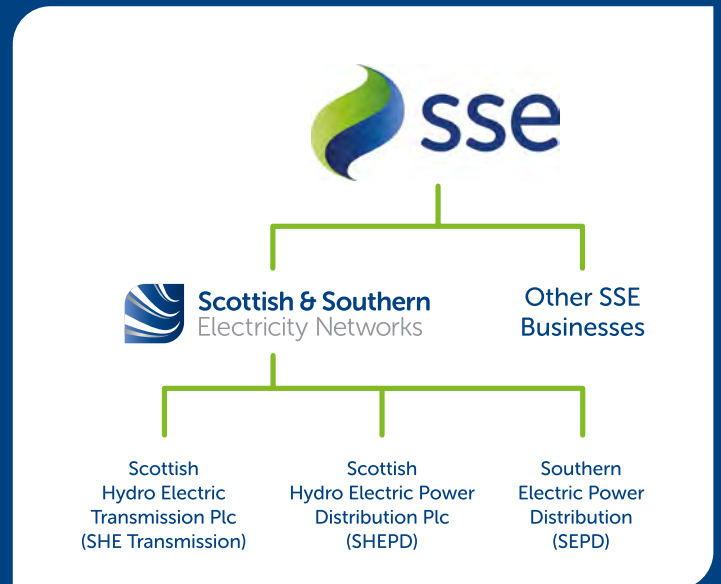
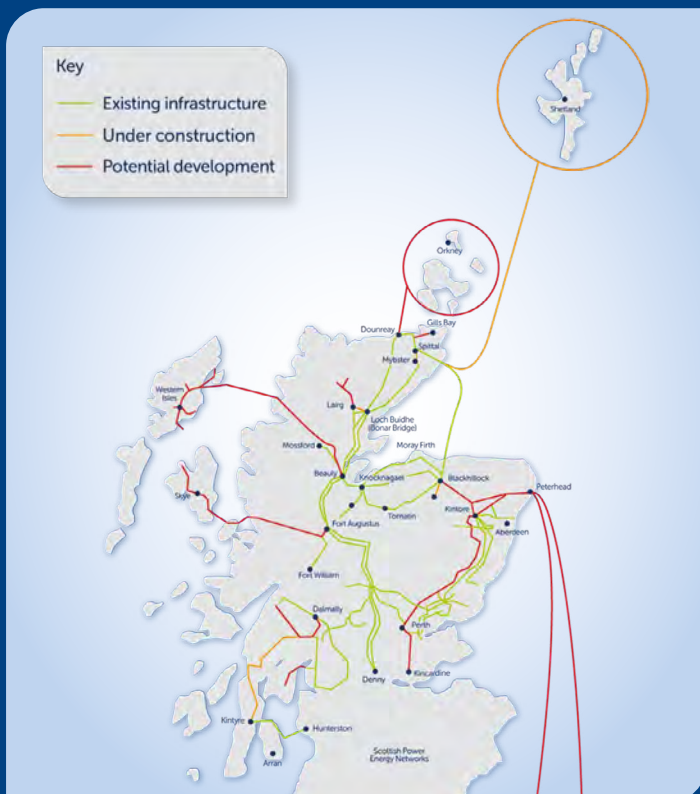
We maintain and invest in the high voltage 132kV, 220kV, 275kV and 400kV electricity transmission network in the north of Scotland. Our network consists of underground and subsea cables, overhead lines on wooden poles and steel towers, and electricity substations, extending over a quarter of the UK's land mass crossing some of its most challenging terrain.

We power our communities by providing a safe and reliable supply of electricity. We do this by taking the electricity from generators and transporting it at high voltages over long distances through our transmission network for onwards distribution to homes and businesses in villages, towns and cities.

## Our responsibilities

We have a licence for the transmission of electricity in the north of Scotland and we are closely regulated by the energy regulator Ofgem. Our licence stipulates that we must develop and maintain an efficient, co-ordinated and economical system of electricity transmission.

## Overview of Transmission Projects



## What is the difference between Transmission and Distribution?

Electricity Transmission is the transportation of electricity from generating plants to where it is required at centres of demand. The Electricity Transmission network, or grid, transports electricity at very high voltages through overhead wires, underground cables and subsea cables. The transmission network connects large scale generation, primarily renewables, to central and southern Scotland and the rest of Great Britain. It also helps secure supply by providing reliable connection to the wider network of generation plans. The Electricity Distribution network is connected into the Transmission network, but the voltage is lowered by transformers at electricity substations, and the power is then distributed to homes and businesses through overhead lines or underground cables.

In total we maintain about 5,000km of overhead lines and underground cables – easily enough to stretch across the Atlantic from John O'Groats all the way to Boston in the USA. Our network crosses some of the UK's most challenging terrain, including circuits that are buried under the seabed, are located over 750m above sea level and up to 250km long. The landscape and environment that contribute to the challenges we face also give the area a rich resource for renewable energy generation. There is a high demand to connect from new wind, hydro and marine generators which rely on Scottish and Southern Electricity Networks to provide a physical link between the new sources of power and electricity users. Scottish and Southern Electricity Networks is delivering a major programme of investment to ensure that the network is ready to meet the needs of our customers in the future.



# What is the Skye Reinforcement Project, and why is it needed?

The Skye Reinforcement Project is the replacement of the existing overhead electricity transmission line that runs from Fort Augustus to Ardmore in the north of Skye. Over the past couple of years, several assessments have been carried out to determine the condition of the existing OHL and associated electricity infrastructure, including existing substation equipment.

These assessments identified that the current line which was constructed in three distinct sections between 1956 and 1989 is now reaching the end of its operational life. Its planned replacement is essential to maintain security of supply to homes and businesses along its route, as well as to the Western Isles, which is supplied by two subsea cables from Ardmore point. In addition, more applications from new generation developers in Skye have been received over that period. This caused SSEN Transmission to develop a needs case for the project that ensured that the best sustainable long-term solutions was identified.

Given the scale of the replacement project, SSEN Transmission intends to 'future proof' the replacement line to allow the connection of additional renewables to help meet Government 'net zero' climate change targets. Taking 'a build it once, built it right approach' which it hopes will greatly reduce the need for additional major works in the future, helping keep local disruption to a minimum.



## The scope of the project

The existing 132kV overhead line (OHL) from Fort Augustus to Ardmore on the Isle of Skye is a main artery in the Highland transmission network and provides the sole connection from the mainland electricity transmission system to Skye and the Western Isles and is essential for maintaining security of supply in the area.

To ensure security of supply to homes and businesses in the region and facilitate the connection of new renewable energy to the grid, SSEN Transmission is proposing the construction of a new overhead line, which will comprise of steel lattice towers, broadly similar in height to the existing towers, wood pole overhead line and sections of underground cable.

The main elements of the project are:

- From Fort Augustus substation to Broadford substation it is proposed to construct a new double circuit 132kV OHL comprising of steel lattice structures. The existing Fort Augustus to Abercalder 132kV wood pole OHL, and the existing 132kV OHL's between Abercalder and Broadford would be dismantled and removed once the new OHL is operational;
- Between Broadford substation and Edinbane substation, the existing single circuit wood pole trident 132kV OHL would be replaced with a new 132kV OHL comprising of steel lattice structures. The existing OHL would be dismantled and removed once the new OHL is operational;
- Between Edinbane substation and Ardmore substation, the existing single circuit wood pole 132kV OHL would be replaced with a new higher capacity 132kV wood pole OHL;
- A new Indoor Gas Insulated Substation adjacent to the existing substation at Broadford;
- A new indoor Gas Insulated Substation, Grid Supply Point and Wind Farm Connection, south west of the existing substation at Edinbane; and
- In order to maintain a supply of energy to the region during construction, the existing OHL would remain in place and following completion of the new line, the existing will be dismantled.

# The story so far and what's next

## What's been done

We consulted with stakeholders in 2020 regarding the need and scope for the project and asked feedback on the preferred route for the new 132kV OHL. We also published a Report on Consultation in November 2020 which summarised the feedback we had received and how we were going to respond to that feedback.

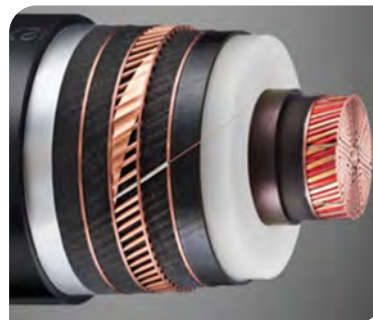
We have been working to ensure any comments or concerns raised have informed the design as it has progressed, and this will continue as we move into the next phase of detailed design and EIA stage of the project.

Some of the significant design decisions that have been put forward to ensure we progress a project which has balanced the technical, cost, environmental and stakeholder feedback requirements include:

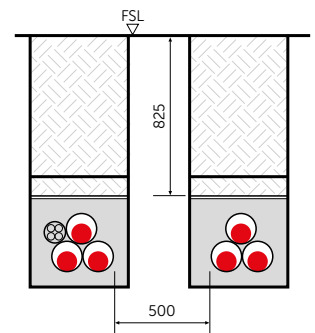
- Ensuring the OHL alignment is optimized as far as possible to take account of sensitive environmental receptors, reduce landscape and visual constraints, take account of existing land use and avoid communities as far as practicable;
- Develop complex design mitigations within the Cuillins National Scenic Area (Section 2) in the form of underground cabling in response to concerns related to potential impacts on landscape and visual issues;
- Carried out further detailed assessment work within Section 3, including working in close collaboration with specialist environmental consultants to commence a Habitats Regulations Assessment (HRA) and detailed micro-siting of the proposed development to avoid the most sensitive habitats where the technical parameters allowed. This has allowed us to identify what we believe is a feasible design solution which removes any potential landscape and visual impacts that may be associated with a preferred route through Glen Arroch that was presented at the previous consultation stage. This is subject to conclusion of the HRA and targeted consultation with key statutory bodies; and
- Develop complex design mitigations within Section 6 in the form of underground cabling in response to concerns related to current and future land use, and volume of existing electricity infrastructure in this area.



Section 4 - Kinloch Hourn



Underground Cable



Typical double circuit cable arrangement

## What we are seeking feedback on

The design is well under way and we are progressing with the technical details such as ground investigations, micro-siting of tower locations, detailed design of the underground cable sections and micro-siting of the access tracks. We will also be kicking off the full EIA stage of the project. As such, we would like to ensure your views on our proposals so far are understood and considered in these final stages of the project and prior to coming to a proposed development for consent application. As such we have included a set of questions on the feedback forms and would be grateful if you are able to submit your views on our preferred design solution.



# What are we consulting on today?

**Following engineering and environmental assessments, we have identified a suitable alignment and design solution for the replacement line. With the work now nearing completion, SSEN Transmission are now presenting our preferred alignment and design solution and seeking your feedback on these proposals.**

The proposed alignment, which broadly follows the existing route, has been developed in a systematic manner, incorporating stakeholder feedback to develop an alignment which is technically feasible, economically viable and could be anticipated to cause the least disturbance to the environment and those living in it, working in it, visiting or using it for recreational purposes.

The alignment and design solution that has taken into consideration the views of our stakeholders ahead of the submission of the Section 37 consent application in summer 2022.

## Mitigations

In line with stakeholder feedback SSEN Transmission are presenting proposals for two sections of underground cable. Underground cable installation requires significant groundworks, requiring greater access and can have a greater impact on habitats and the surrounding environment.

Therefore, it has not been viable to consider undergrounding for the entire line route. However, in areas of particular sensitivity a preferred design solution using underground cable has been selected to mitigate likely significant environmental effects, or to facilitate rationalisation of the electricity network where it can address specific issues, subject to environmental and engineering considerations.

These areas are:

- 14km of underground cable as line passes the Cuillin Hills
- 7km of underground cable as the line joins Fort Augustus substation

In response to community views expressed, we are seeking feedback on a preferred alignment that follows closer to the existing OHL and does not follow a new route through Glen Arroch, as proposed in our June 2020 consultation.

## Broadford and Edinbane Substation Proposal of Application Notice (PAN)

In addition, a separate section of the consultation event will be dedicated to Broadford Substation and Edinbane Substation, where work is required to reinforce and extend the existing substations. We welcome your feedback on these proposals at this time. The PAN process is a key first step in the town and country planning process for these sites and kickstarts a 12 week consultation period for feedback and comments.



# Technical Solutions to Meet the Project Need

## Existing Infrastructure

The existing 132kV overhead line which connects Fort Augustus and Skye consists of four distinct sections, which were constructed at different times over the past 65 years in response to changing needs. These include:

- Fort Augustus to Abercalder – Wooden pole
- Abercalder to Quoich – Steel lattice towers
- Quoich to Broadford – Steel lattice towers
- Broadford to Ardmore – Wooden pole

The existing infrastructure is approaching the end of its operational life and a significant capacity increase is required to meet the needs of renewable generators looking to connect. To maintain security of supply and carry the power required to support net zero emissions targets, it has been deemed not feasible to upgrade the existing overhead line infrastructure. As such the existing 132kV overhead lines between Fort Augustus and Ardmore will be replaced.

Please note the Abercalder to Quoich section is presently being replaced with a wood pole OHL due to asset condition. This will ensure continued security of supply from Quoich Power Station and during the construction phase, can act as a temporary diversion for the development.

## Fort Augustus to Edinbane

There is a greater need for higher capacity power transfer between Fort Augustus and Edinbane, as well as more technically challenging terrain to cross. In these areas, a steel lattice tower construction is required to meet the identified system need. These towers will be approximately 28-33 meters in height.



Figure 2 An example of a Steel Lattice L7 Tower Structure

## Edinbane to Ardmore

Less power will be transferred between Edinbane and Ardmore. A new trident H wood pole is suited to the terrain in this area and will be of sufficient power capacity to meet the identified electrical need.



Figure 1 An Example of a Trident H wood pole structure



Figure 3 An Example of Underground Cable installation



# Consideration of Alignment Options and Design Solutions

The consideration of alignment options and design solutions brings together work by three main disciplines:



## Engineering Team

Who identify engineering constraints and where overhead lines and cables can be installed from a construction and operational perspective;



## Environmental Team

Who identify key environmental constraints (aspects) along the routes which the new infrastructure could impact upon; and



## Land Team

Who engage with landowners to identify key land use constraints.

## Identifying Key Environmental Aspects

Key environmental aspects are identified through a mixture of desktop assessment and site surveys. Work undertaken during this phase of the project development has included detailed assessment of the alignment options by identifying environmental aspects which could constrain the proposed development.

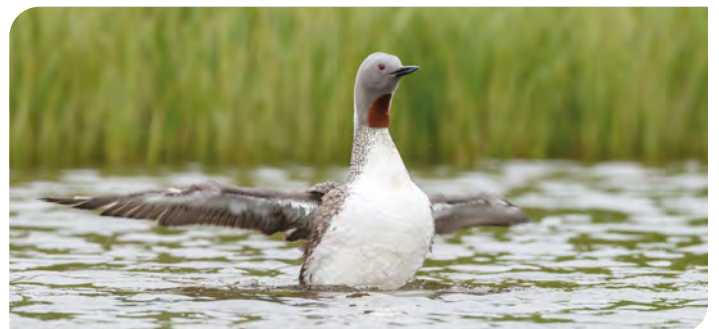
**A suite of specialist environmental surveys have been undertaken by:**

- Landscape architects;
- Archaeologists;
- Ornithologists and ecologists;
- Geologists and hydrologists.

**to ensure detailed knowledge of potential constraints and provide advice on alignment options, micro-siting opportunities for positioning towers and indicative construction access.**

**The key environmental aspects that have informed the alignment options and design solutions include:**

- Landscape character and visual amenity aspects;
- Special Protected Areas (SPA), for birds;
- Special Areas of Conservation (SAC), for habitat;
- Sites of Special Scientific Interest (SSSI);
- Local Nature Conservation Sites;
- National Scenic Areas;
- Protected Species and habitats
- Scheduled Monuments;
- Peat/ground conditions/water environment.



# Consideration of Alignment Options and Design Solutions



Visualisation of steel structures passing Loch Sligachan (Cuillin Hills NSA)

## SSEN Transmission Engineering and Construction Contractor

SSEN Transmission engineering team engaged an experienced OHL construction contractor to carry out a detailed desk-based and site walkover survey to explore the advantages, disadvantages and constructability of OHL alignment options. An OHL alignment was identified on the basis of it being the most technically feasible and economically viable alignment, giving due consideration to a range of technical, environmental, and cost criteria over the construction and operation phases.

SSEN Transmission Engineering team has been working alongside the contractor to develop a project specific access strategy, informed by NatureScot's guidance on access tracks in the Scottish Uplands and our in-house engineering knowledge. The routeing of tracks has been a key consideration in the evolving design, making best use of existing forestry

and estate tracks with a focus on upgrading where possible rather than creation of new access tracks. Studies have also been undertaken on the choice of technology, including appropriate ways to mitigate environmental effects including subsea and land cabling, alternative structures (NESTS) and OHL routes.

## Land Management

SSEN Transmission Land Management team are working closely with land owners to ensure working practices are taken into account, with potential land use constraints recognised as an important part of the overall design process.

## Weekly Design Meetings

As the alignment work progressed on the ground, weekly design meetings with the contractor, SSEN Transmission engineering, environmental and land management teams, and external environmental consultants were

undertaken to discuss the alignment and look at potential localised alternatives to avoid and/or minimise potential environmental effects and matters concerning land use.

The design process has been facilitated by the use of powerful GIS and visualisation tool kits, and extensive team and specialist site walkover surveys.

## Consultation Responses

Consultation responses received during the routeing stage of the project in 2020 have been used to inform the design as it has progressed, including further detailed studies on the alternatives routes in some sections of the project, as reported in the Report on Consultation published in November 2020.

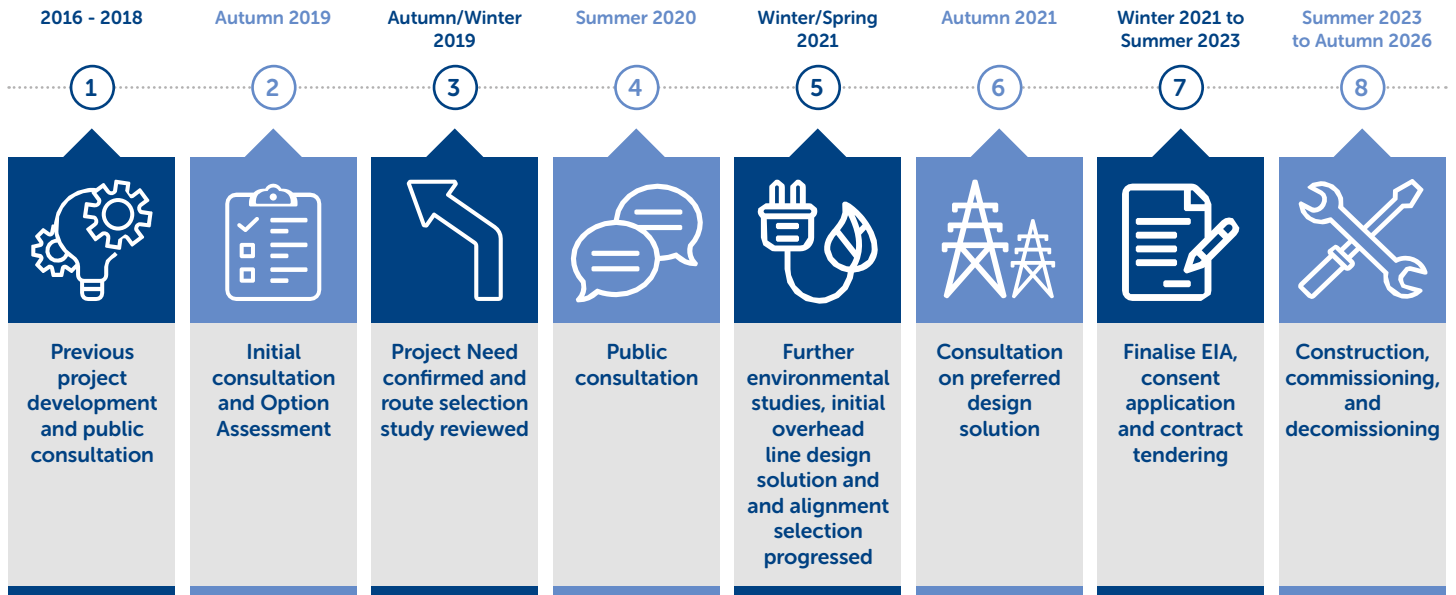
We have also undertaken workshops with statutory authorities throughout the design process to seek preliminary feedback on the preferred alignment and design solution.

## Example of GIS Modelling and onsite surveys





# Project Timeline



## 1 Previous project development and public consultation

Consultation and development work on a proposed additional overhead line between the Isle of Skye and Fort Augustus. The project driver was to enable renewable generation on Skye to connect to the transmission network. This project was stopped in 2018 to allow for a more holistic and enduring approach to meet future security of supply needs and support the transition to net zero.

## 2 Initial consultation and Option Assessment

Consultations with key statutory bodies such as Scottish National Heritage, The Highland Council, Historic Environment Scotland, Forestry Commission and Scottish Environment Protection Agency were undertaken to seek feedback on the project and outline the assessment methodologies used to determine the changes to project need.

## 3 Project need confirmed and route selection reviewed

Project needs and OHL route options reviewed and preferred route identified.

## 4 Public consultation

Route consultation with statutory, non-statutory bodies and communities on initial project proposals. Document detailing scope of consultation is published.

## 5 Further environmental studies, initial overhead line design and alignment selection progressed

Undertake further environmental studies and engineering design to identify the preferred design solution and alignment for the overhead line. Confirm the preferred alignment for the OHL and establish what structure types will be needed, including for any mitigation informed by early EIA work.

## 6 Consultation on preferred alignment selection

Undertake consultation on the preferred alignment for the overhead line and hold further public consultation event.

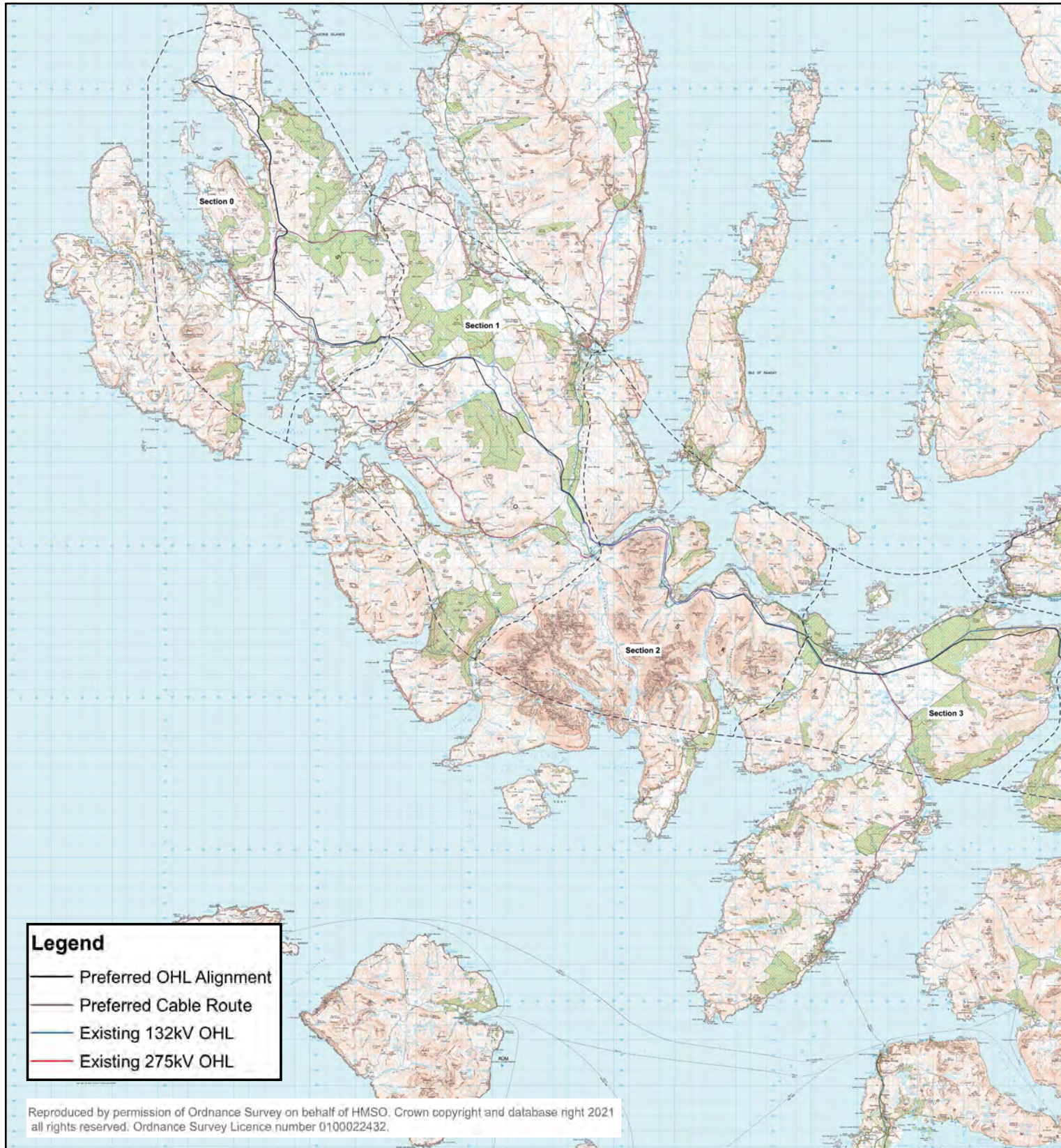
## 7 Consent application & contract tendering

Confirm the overhead line alignment and design solution, and publish the Report on Consultation. Progress Environmental Impact Assessment (EIA), negotiations with landowners, preparation and submission of Section 37 consent application, contract tendering and procurement detailed design.

## 8 Construction and commissioning

Undertake all onsite construction works, including energisation of the new OHL circuit and decommissioning and removal of the old OHL infrastructure.

# Preferred Overall Alignment

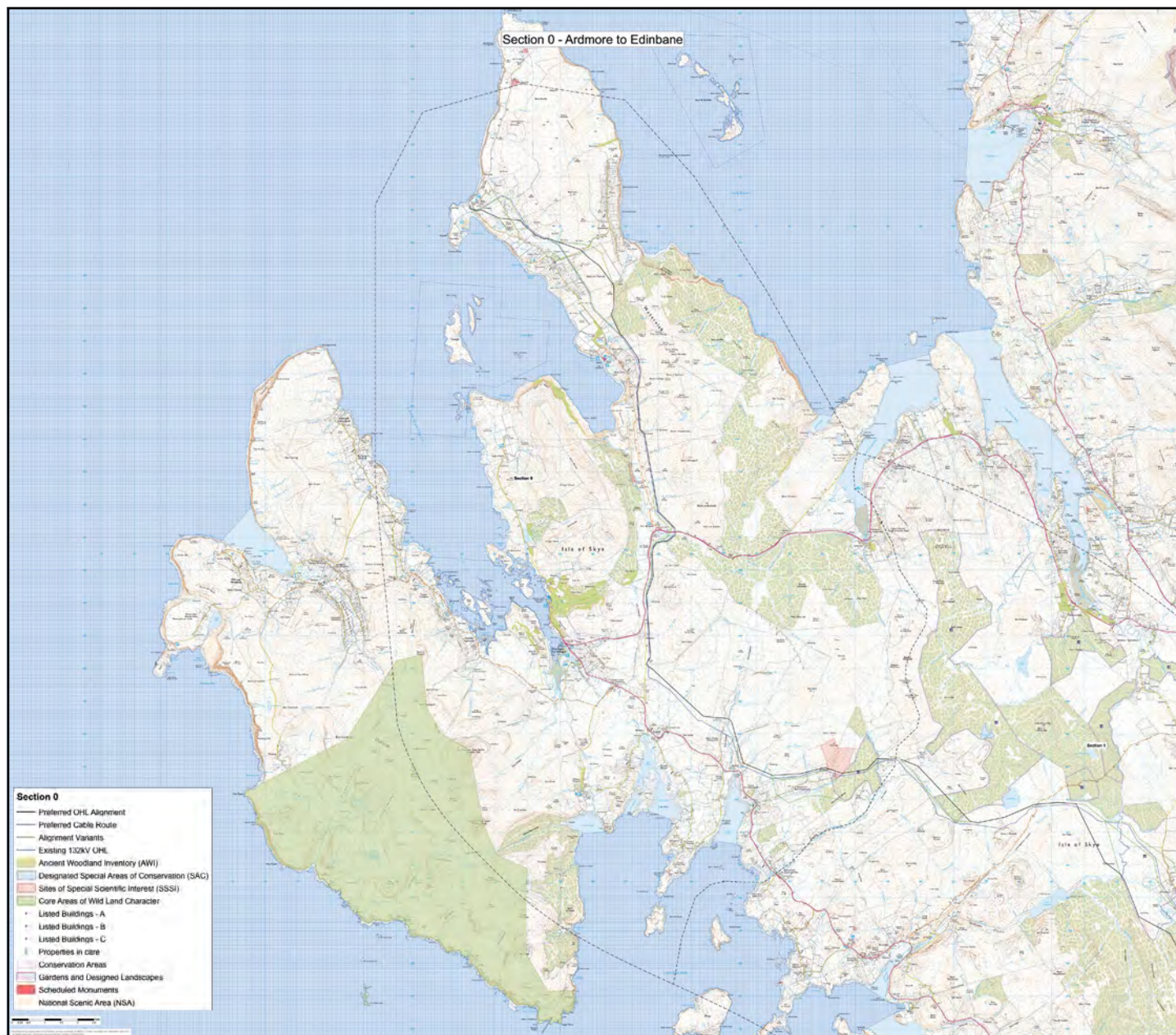








# Preferred Alignment – Section 0



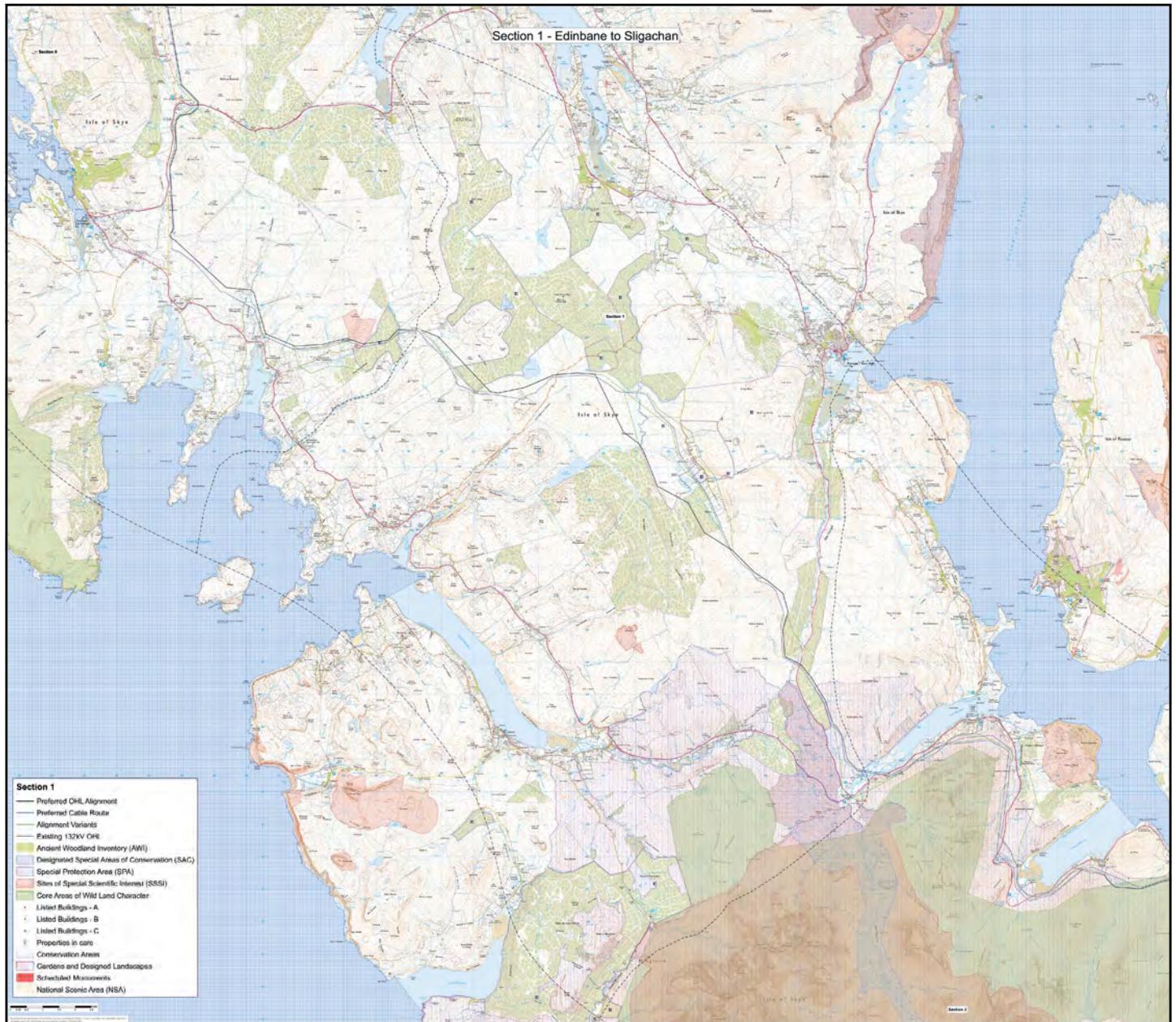
## Section 0 – Ardmore to Edinbane

The Preferred Alignment for this section largely follows the existing 132kV OHL, except at Trumpan, Hallin and Glen Heysdal. The design solution is approximately 23km of wood pole (H pole) OHL, with the existing wood pole removed upon completion.

The main considerations have been the terrain, access, avoidance of existing infrastructure, archaeological features, communities, natural heritage, and landscape and visual.



# Preferred Alignment – Section 1



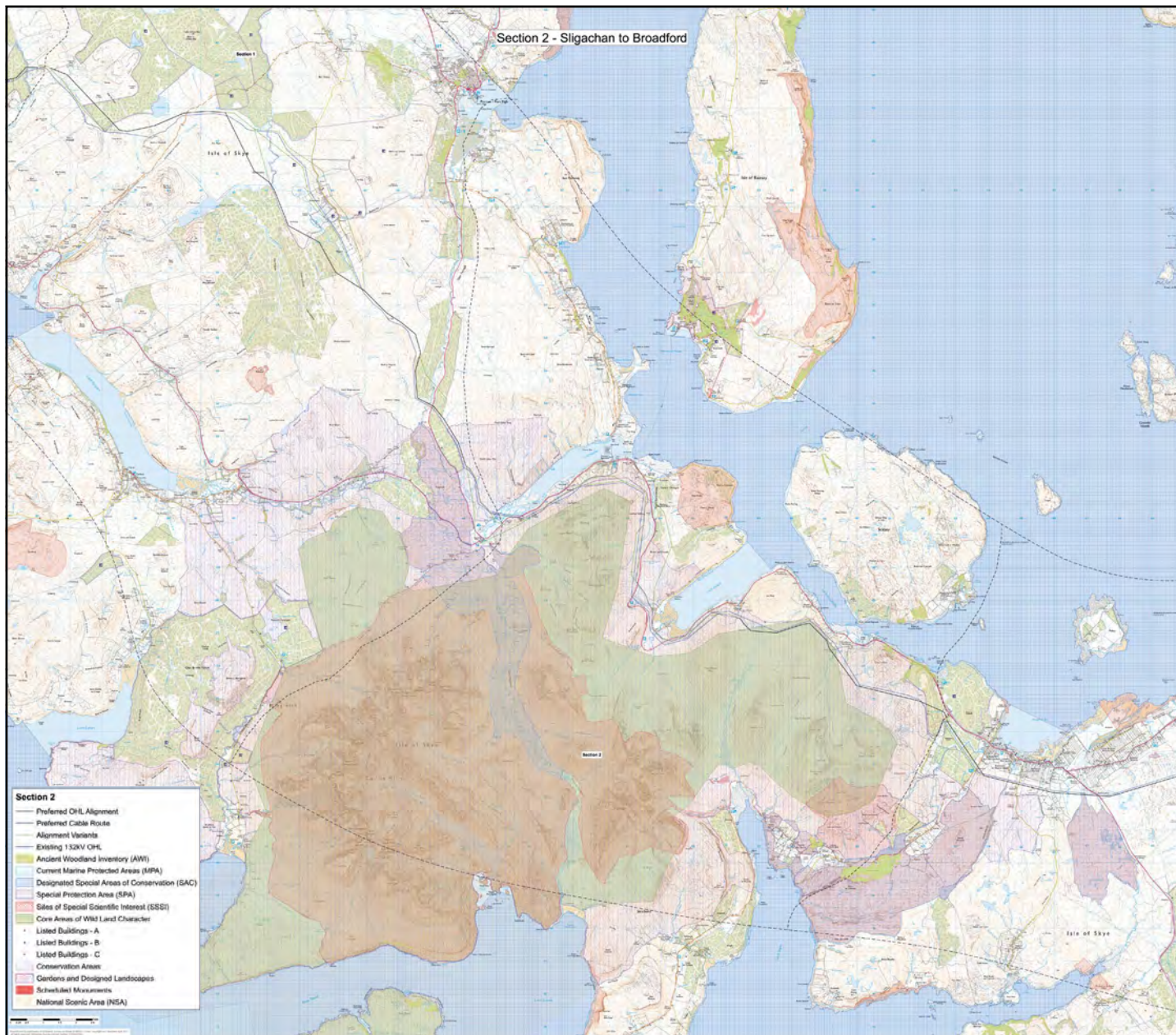
## Section 1 – Edinbane to Sligachan

The Preferred Alignment for this section follows the existing 132kV OHL, except at Glen Vic Askill and Glenmore/Mugeary. The design solution is to replace the existing wood pole with a new double circuit steel lattice 132kV OHL, with the existing wood pole removed upon completion.

The main considerations have been ground conditions (avoidance of deep peat and sensitive habitats), access, birds, existing infrastructure, archaeological features, natural heritage, forestry, and landscape and visual.



# Preferred Alignment – Section 2



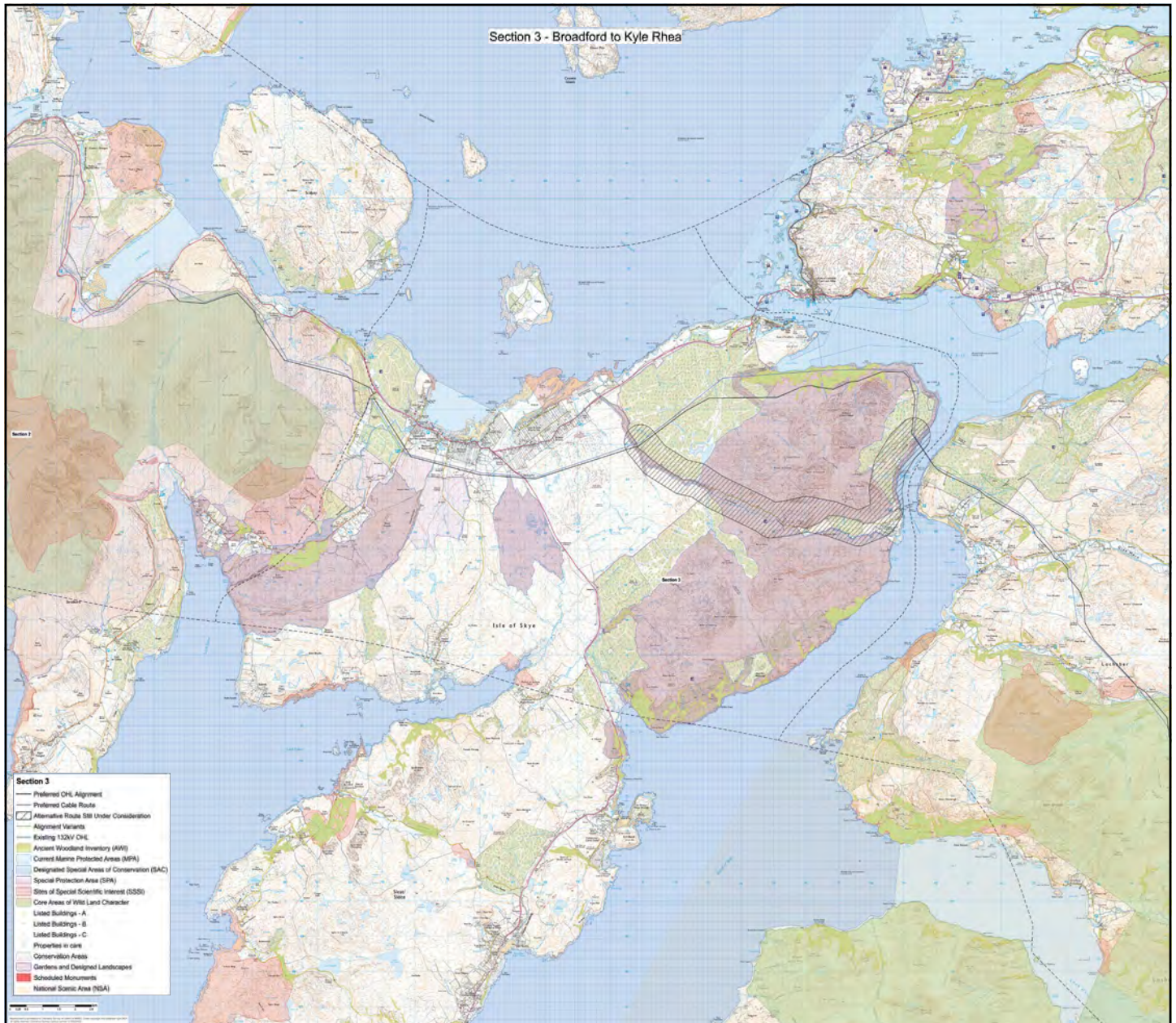
## Section 2 – Sligachan to Broadford

The Preferred Alignment for this section typically follows the existing 132kV OHL, skirting the edge of the Cuillins. The design solution is to replace the existing wood pole with a new double circuit steel lattice 132kV OHL and approximately 14km of underground cable between 2 sealing end compounds located just north of Sligachan to Luib. The underground cable has been assessed as the most appropriate design solution to mitigate landscape and visual effects.

The main considerations have been consultation feedback, terrain, ground conditions, birds, landscape and visual (NSA and Wild Land) and recreational use.



# Preferred Alignment – Section 3



## Section 3 – Broadford to Kyle Rhea

The Preferred Alignment for this section follows the existing 132kV OHL. The design solution is to replace the existing steel lattice OHL with a new double circuit steel lattice 132kV OHL. This is subject to concluding our Habitats Regulations Assessment and consulting on its findings.

The main considerations have been consultation feedback, sensitive habitats of the SAC, terrain, access, forestry, landscape and visual, and communities.



# Preferred Alignment – Section 4



## Section 4: Kyle Rhea to Loch Quoich

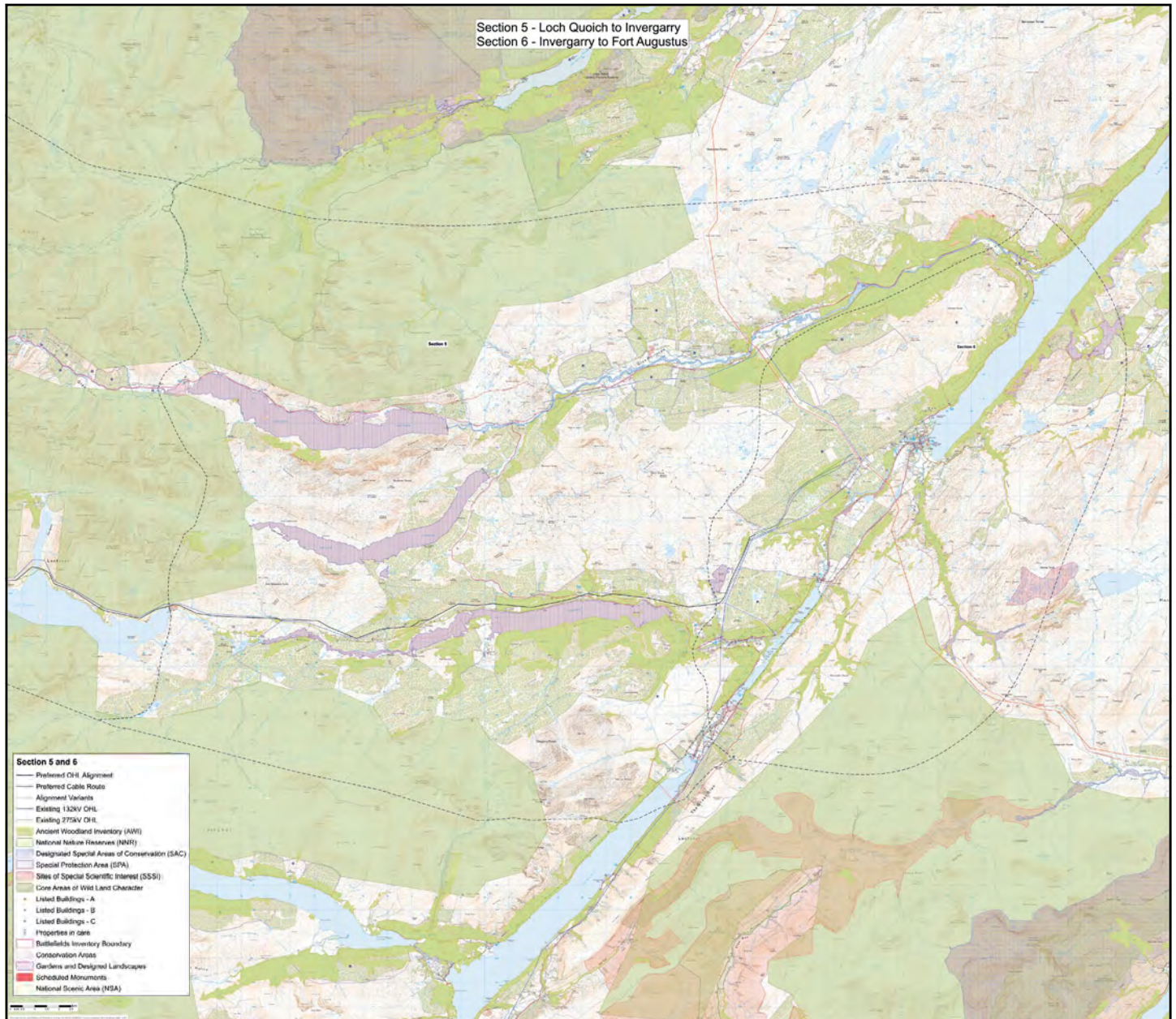
The Preferred Alignment for this section follows the existing 132kV OHL from Kyle Rhea to Quoich Dam, via Kinloch Hourn and Loch Coire Shubh and Loch Cuaich. The design solution is to replace the existing lattice OHL with a new double circuit steel lattice 132kV OHL.

The main considerations have been consultation feedback, existing infrastructure, landscape and visual, space due to difficult terrain and ground conditions, residential properties, land use and forestry.

Access has also been a key consideration and existing access has been utilised as far as possible.



# Preferred Alignment – Sections 5 & 6



## Section 5 – Loch Quoich to Invergarry

The Preferred Alignment for this section closely follows the existing 132kV OHL apart from at Inchlaggan whereby it aligns to the rear of properties as opposed to in front of properties.

The design solution is to replace the existing wood pole OHL with a new double circuit steel lattice 132kV OHL.

The main considerations have been existing infrastructure, forestry, using existing access tracks, birds, landscape and visual, and residential properties.

## Section 6 – Invergarry to Fort Augustus

The Preferred Alignment for this section largely follows the route of the existing 132kV OHL except at Loch Lundhie, Lon Mor and Auchterawe wood. The design solution is to replace the existing wood pole with a new double circuit steel lattice 132kV OHL and approximately 6km of underground cable between a sealing end Compound at Loch Lundie and Fort Augustus Substation. The underground cable has been assessed as the most appropriate design solution to facilitate rationalisation of existing OHL infrastructure within the area, and in light of likely future connection requirements.

The main considerations have been existing infrastructure, forestry and land use, communities, existing access tracks, birds, landscape & visual, and cultural heritage.



# Broadford Substation Project – Need and Site Selection

## Project Need

There is a requirement to reinforce and extend the existing substation, driven by the Skye Reinforcement project and the associated wind farm connection commitments.

A new Indoor Gas Insulated Substation is proposed to be constructed on adjacent SSEN Transmission owned land to the east and south of the existing substation at Broadford.

## Site Selection – why the existing site?

- It is efficient and optimal to utilise the existing substation sites for the required infrastructure works.
- SSEN Transmission propose utilising SSEN Transmission owned land adjacent to the existing substation, eliminating the need to extend the ownership boundary.
- Facilitates offline construction, minimising the impact on the existing infrastructure and electricity transmission and distribution systems supplying customers.



Existing Broadford Substation looking eastwards



SSEN Transmission owned land east of existing substation



# Broadford Substation Proposals

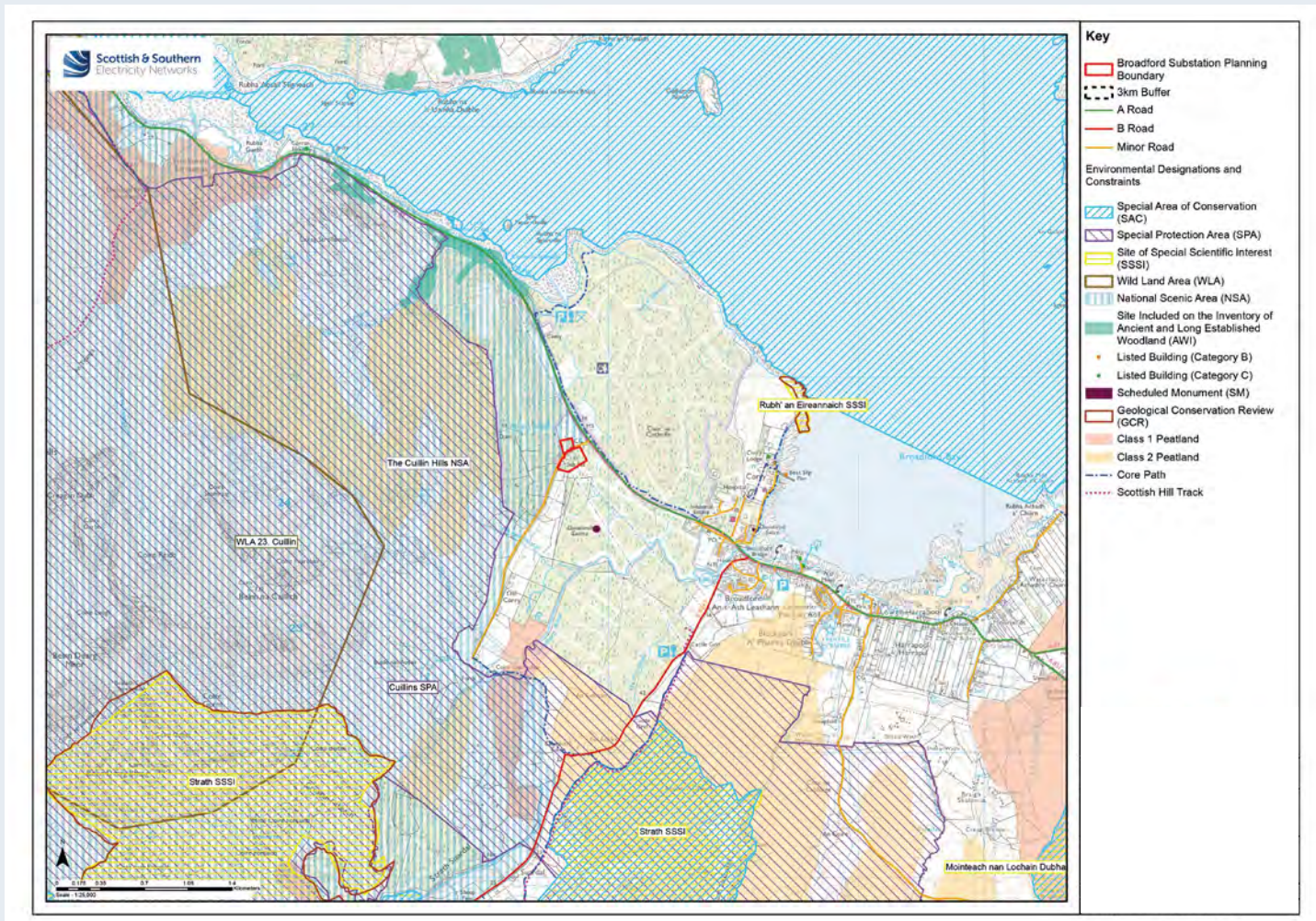
## – Site Layout



- Existing Broadford substation shown in black to the North West of the site.
- Proposed new Broadford substation to the South and East of the existing substation on SSEN owned land.
- New 132kV Overhead Line routes indicated running South East to North West.
- Temporary Construction Welfare area indicated on Old Corry Road off A87.
- Access will be via the existing track and public road.



# Broadford Substation Project – Key Environmental Considerations



## The key environmental considerations for the development of a substation extension in this location include:

- Landscape and visual receptors. The site is surrounded by commercial forestry plantation but is located on the very edge of the Cuillin Hills National Scenic Area (NSA). Potential effects in relation to the Cuillin Hills NSA, landscape character and visual receptors within the Broadford area will require consideration. A full landscape and visual assessment will be carried out and opportunities to mitigate effects would be considered in the form of appropriate landscape mitigation, where required;
- The Cuillins Special Protection Area (SPA) is located approximately 600m to the west of the proposed substation site. Potential effects on the qualifying features (golden eagle) of the SPA, as well as other potential ornithological constraints, will be considered;
- Habitats within the vicinity of the site comprise commercial forestry plantation and semi-improved neutral grassland. Minimising effects on sensitive habitats and deeper 4 areas of peat will be informed by existing habitat data and further survey work as required;
- Potential effects on European Protected Species will be informed by protected species surveys. Any identified effects could be reduced or eliminated by adopting appropriate mitigation such as the use of Species Protection Plans;
- Local hydrological constraints;
- Felling requirements within the commercial forestry plantation;
- Consideration of potential effects on cultural heritage;
- Transportation of materials and abnormal load requirements to the site; and
- Potential effects of construction and operational noise.



# Broadford Substation Programme and next steps

## Next Steps

- Detailed design
- Environmental surveys
- EIA screening
- Completion of an environmental survey

## Indicative Programme

- Initial Consultation Period starts - June 2021
- Planning Submission - June 2022
- Contractor Award - July 2023
- Construction Starts on site - August 2023
- Construction Finishes - December 2025





# Edinbane Substation Project – Need and Site Selection

## Project Need & Proposals

There is a requirement to reinforce and extend the existing substation, driven by the Skye overhead line project and the associated wind farm connection commitments.

A new Indoor Gas Insulated Substation, Grid Supply Point and Wind Farm connection is proposed to be constructed on land to the South and West of the existing substation at Edinbane.

### Site Selection – why the existing site?

- Proposed new substation site is adjacent to the existing substation site on land to the West and South, utilising existing screening to the West and natural topography to the North and East to minimise the visual impact.
- New substation buildings and associated infrastructure have been sited adjacent to the existing substation to limit the disturbance/ecology whilst facilitating offline construction.
- Buried HV cable connections proposed to connect the new substation to the overhead line, increasing design flexibility and minimising the footprint.
- A new 132kV Overhead Line terminal tower to cable interface compound is proposed close to the existing overhead line, reducing the number of new transmission towers that would be required.
- Proposed additional 132/33kV Grid Transformer will be located in buildings reducing noise and visual impact.



Eastern fenceline of the existing substation

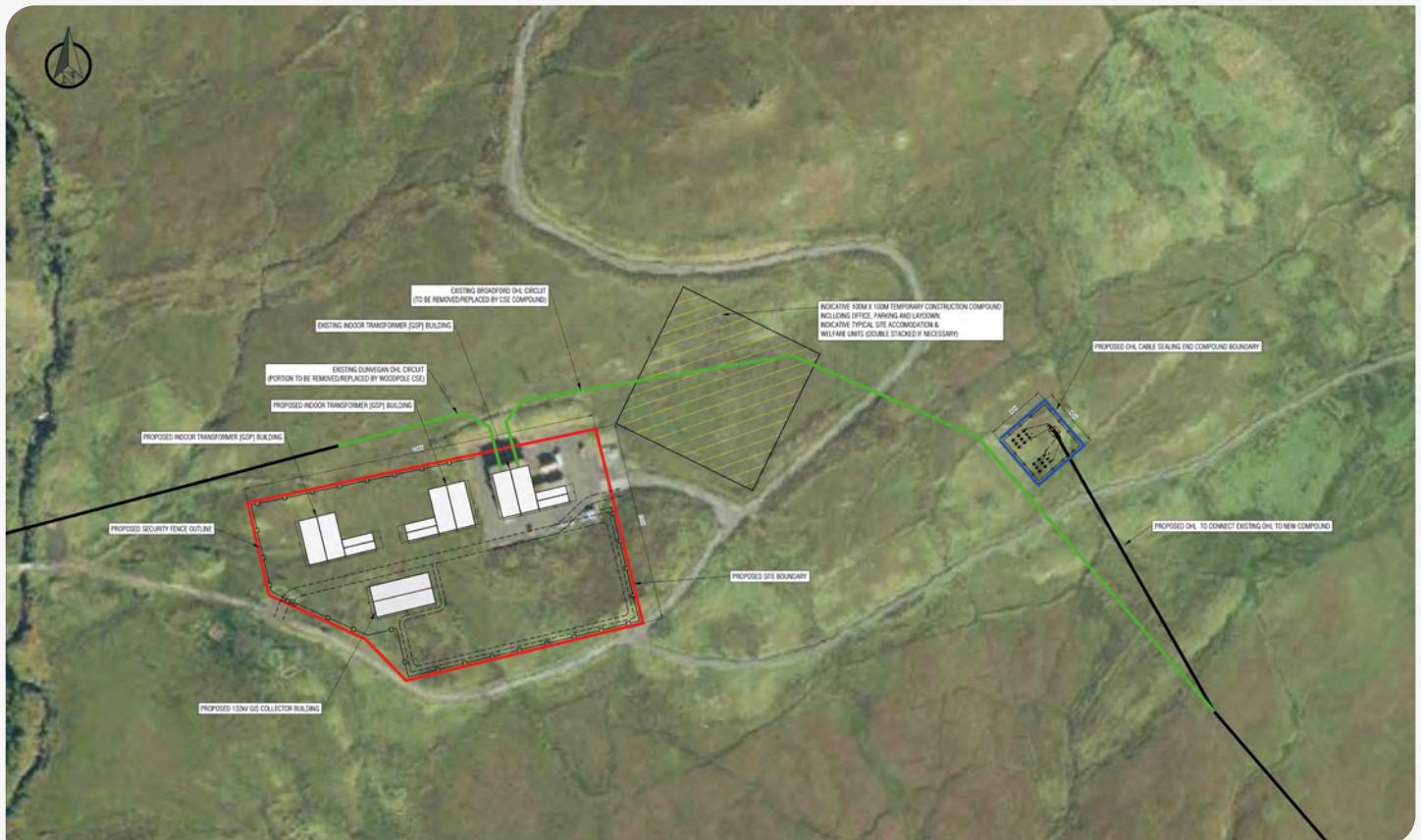


View west from wind farm access road



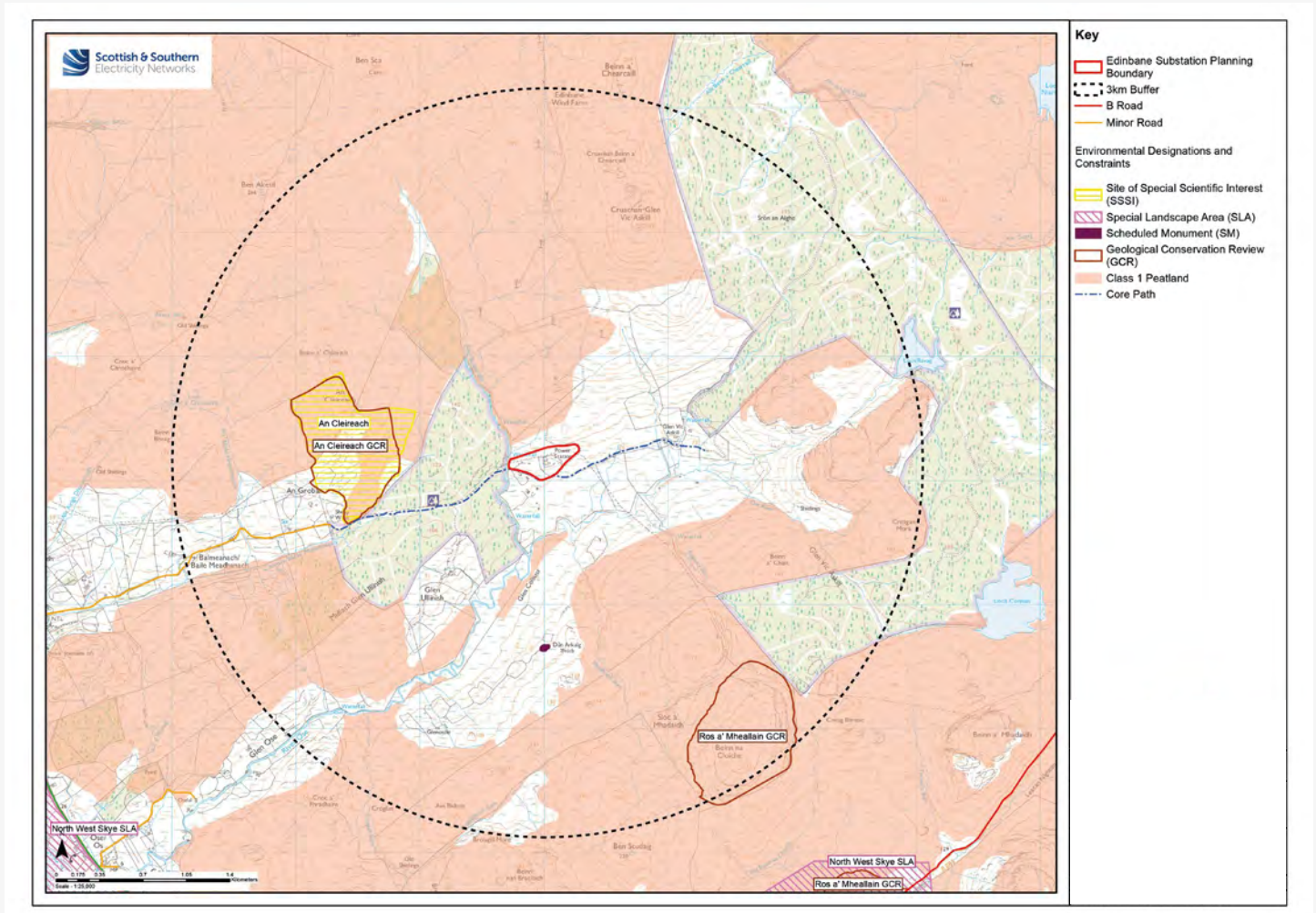
# Edinbane Substation Proposals

## – Site Layout



- Existing Edinbane substation shown to the North East of the site.
- Proposed new Edinbane 132kV Collector substation, Grid Supply Point and Glenn Ullinish Wind Farm connection shown to the West and South West of the existing substation on land to be procured by SSEN.
- New 132kV Overhead Line route indicated running South East to North West in black and sections of existing Overhead Line that are to be removed shown in green.
- Temporary Construction Welfare area indicated to the North East of the existing substation.

# Edinbane Substation Project – Key Environmental Considerations



## The key environmental considerations for the development of a substation extension in this location include:

- Potential effects on landscape character and visual receptors within the vicinity of the site. A full landscape and visual assessment will be carried out and opportunities to mitigate effects would be considered in the form of appropriate landscape mitigation, where required;
- Potential effects on ornithology and European Protected Species, which will be informed by relevant survey data. It is anticipated that any identified effects could be reduced or eliminated by adopting appropriate mitigation such as the use of Species Protection Plans;
- Habitats within the vicinity of the site comprise semi-improved neutral grassland and wet modified bog. Minimising effects on sensitive habitats and deeper areas of peat will be informed by existing habitat data and further survey work as required;
- Local hydrological constraints;
- Potential effects on recreation given proximity to Loch Caroy to Glen Vic Askill Core Path;
- Consideration of potential effects on cultural heritage;
- Transportation of materials and abnormal load requirements to the site; and
- Potential effects of construction and operational noise.



# Edinbane Substation Programme and next steps

## Next Steps

- Detailed design
- Environmental surveys
- EIA screening
- Completion of an environmental survey

## Indicative Programme

- Initial Consultation Period starts - June 2021
- Planning Submission - June 2022
- Contractor Award - July 2023
- Construction Starts on site - August 2023
- Construction Finishes - December 2025



# What happens now and how do I have my say?

We understand and recognise the value of the feedback provided by members of the public during all engagements, consultations and events. Without this valuable feedback, the Project Development team would be unable to progress projects and reach a balanced proposal to submit for planning.

We are keen to receive your views and comments with regards to the following elements of our projects and will be seeking feedback from members of the public on this exhibition until **Friday 19th November 2021**. You will find the appropriate feedback forms at the end of this booklet:

We're inviting your comments on our preferred alignment between Ardmore on the Isle of Skye and Fort Augustus Substation in Auchterawe.

For Broadford and Edinbane Substations, we shall shortly be submitting a Town and Country Planning Application and are seeking formal comments ahead of submitting an application to the Highland Council. Please find more information below.

**Broadford Substation** – PAN In regard to the Broadford substation, general comments on the proposals can be made throughout the 12-week period to 19th November 2021. To provide feedback on the proposal or to gain further information on the project, please fill in a Broadford Substation feedback form, visit our virtual consultation events or contact our Community Liaison Manager. Once planning applications have been submitted, the public will have an opportunity to make formal representations to The Highland Council for the proposed Broadford Substation before a decision is made on our application.

**Edinbane Substation** – PAN In regard to the Broadford substation, general comments on the proposals can be made throughout the 12-week period to 19th November 2021. To provide feedback on the proposal or to gain further information on the project, please fill in a Edinbane Substation feedback form, visit our virtual consultation events or contact our Community Liaison Manager. Once planning applications have been submitted, the public will have an opportunity to make formal representations to The Highland Council for the proposed Edinbane Substation before a decision is made on our application.

---

## Comments

Your views and comments can be provided to the project team by completing the feedback forms within this booklet, via the project webpage, or by writing to our Community Liaison Manager. All received feedback will be assessed and the proposed options adapted where necessary.

## Community Liaison Manager, Lisa Marchi



[lisa.marchi@sse.com](mailto:lisa.marchi@sse.com)



07825 015 507



**Lisa Marchi**  
Scottish and Southern  
Electricity Networks,  
10 Henderson Road,  
Inverness, IV1 1SN



---

## Additional information

Information will also be made available via the project webpage and social media channels:

---

### Project website:

[www.ssen-transmission.co.uk/projects/skye-reinforcement](http://www.ssen-transmission.co.uk/projects/skye-reinforcement)

---

### Follow us on Twitter:

[@ssencommunity](https://twitter.com/ssencommunity)

---

### Follow us on Facebook:

[@ssencommunity](https://www.facebook.com/ssencommunity)



# How do I have my say?

Join one of our face to face consultations being held along the entire route or online at our virtual consultation.

The consultation events will be taking place on:

Dunvegan Hall	28 September	15:00 – 19:00
Broadford Hall	29 September	15:00 – 19:00
Glenelg Hall	30 September	15:00 – 19:00
Kyleakin Hall	4 October	15:00 – 19:00
Glengarry Hall	5 October	15:00 – 19:00
Fort Augustus Hall	6 October	15:00 – 19:00
Virtual Consultation	13 October	13:00 – 15:00 17:00 – 19:00

Our virtual consultation room will open on 13th October 2021, where information regarding our proposals will be available alongside opportunities to join the project team for interactive text chat sessions. A link to view the virtual consultation platform will be available on the Skye Reinforcement Webpage

If you are unable to attend one of the face to face events or the live chat sessions, there are still plenty of ways to engage with our team: You can contact us by email, phone or post, please see details for the Community Liaison Manager. We are happy to arrange (virtual) meetings for individuals or small groups to discuss any areas of interest and if this is something you would like us to facilitate, please contact us as soon as possible We are happy to post out copies of this brochure, please contact the Community Liaison Manager to arrange this.

## Feedback

As part of the consultation exercise, we are seeking comments from members of the public, statutory consultees and other key stakeholders.

We kindly request that all comments are received by **Friday 19th November 2021**. Further information, should you require it, is available on the project webpage or can be made available in printed format by contacting the Community Liaison Manager. The feedback forms in this booklet can be detached and sent back, or you can fill them in online using the form on the project webpages. We do request that any feedback that you wish to be included in the Report on Consultation is received in written format (feedback received via phone calls will be circulated to the project team but would not be included in the Report on Consultation).

All feedback received will be collated, reviewed and included in our subsequent Report on Consultation, along with SSEN Transmission’s responses to the topics raised. The report will be published later this year and will be available to view on the project webpage.



# Your feedback - Skye Reinforcement Overhead Line

Thank you for taking the time to read this consultation booklet. In order to record your views and improve the effectiveness of our consultation, please complete this short feedback form.

Please complete in **BLOCK CAPITALS**. (Please tick one box per question only)

**Q1** Have we adequately explained the need for this Project?

Yes  No  Unsure

**Q2** Are you satisfied that our approach taken to select the proposed route (in Sections 2 and 3), preferred alignment and design solution has been adequately explained?

Yes  No  Unsure

**Q3** Are there any factors, or environmental features, that you consider may have been overlooked during the preferred route and alignment selection process?

Yes  No  Unsure

**Q4** Do you have any other comments in relation to the drivers for the project, related to the transmission infrastructure requirements, or about the preferred alignment and design solution?





# Your feedback - Broadford Substation

Thank you for taking the time to read this consultation booklet. In order to record your views and improve the effectiveness of our consultation, please complete this short feedback form.

Please complete in **BLOCK CAPITALS**. (Please tick one box per question only)

**Q1** Do you feel sufficient information has been provided to enable you to understand what is being proposed on site and why? Comments:

Yes  No  Unsure

**Q2** Are you satisfied that the proposed layout is appropriate for the site location? Comments:

Yes  No  Unsure

**Q3** Do you have any particular concerns or queries on the proposed development? Comments:

Yes  No  Unsure

**Q4** Is there anything specific you would like to raise in relation to the project which will impact on the planning process to deliver this essential network upgrade at the Broadford substation? Comments:



**Q5** Do you have any other comments on the proposed development? Comments:





# Your feedback - Edinbane Substation

Thank you for taking the time to read this consultation booklet. In order to record your views and improve the effectiveness of our consultation, please complete this short feedback form.

Please complete in **BLOCK CAPITALS**. (Please tick one box per question only)

**Q1** Do you feel sufficient information has been provided to enable you to understand what is being proposed on site and why? Comments:

Yes  No  Unsure

**Q2** Are you satisfied that the proposed layout is appropriate for the site location? Comments:

Yes  No  Unsure

**Q3** Do you have any particular concerns or queries on the proposed development? Comments:

Yes  No  Unsure

**Q4** Is there anything specific you would like to raise in relation to the project which will impact on the planning process to deliver this essential network upgrade at the Edinbane substation? Comments:



**Q5** Do you have any other comments on the proposed development? Comments:

**Full name**

**Address**

**Telephone**

**Email**

If you would like to be kept informed of progress on the project please tick this box.

If you would like your comments to remain anonymous please tick this box.

**Thank you for taking the time to complete this feedback form.**

**Please submit your completed form by one of the methods below:**

**Post:** Scottish and Southern Electricity Networks, 10 Henderson Road, Inverness, IV1 1SN

**Email:** [lisa.marchi@sse.com](mailto:lisa.marchi@sse.com)

**Online:** [www.ssen-transmission.co.uk/projects/skye-reinforcement](http://www.ssen-transmission.co.uk/projects/skye-reinforcement)

**Download:** Comments forms and all the information from today's event will also be available to download from the project website.

The feedback form and all information provided in this booklet can also be downloaded from the dedicated website:

**[www.ssen-transmission.co.uk/projects/skye-reinforcement](http://www.ssen-transmission.co.uk/projects/skye-reinforcement)**

Any information given on the feedback form can be used and published anonymously as part of Scottish and Southern Electricity Networks consultation report. By completing this feedback form you consent to Scottish and Southern Electricity Networks using feedback for this purpose.

Scottish and Southern Electricity Networks is a trading name of: Scottish and Southern Energy Power Distribution Limited Registered in Scotland No. SC213459; Scottish Hydro Electric Transmission plc Registered in Scotland No. SC213461; Scottish Hydro Electric Power Distribution plc Registered in Scotland No. SC213460; (all having their Registered Offices at Inveralmond House 200 Dunkeld Road Perth PH1 3AQ); and Southern Electric Power Distribution plc Registered in England & Wales No. 04094290 having its Registered Office at Number One Forbury Place, 43 Forbury Road, Reading, Berkshire, RG1 3JH which are members of the SSE Group.





## ANNEX 6 – POSTER AND MAIL DROP – SEPTEMBER 2021



# Skye Reinforcement Project

## Public Consultation Events

**SSEN Transmission invites you to come and share your views with us on our proposed alignment for the Skye Reinforcement Project.**

### What is happening?

The existing Fort-Augustus to Skye line, which was constructed in three distinct sections between 1956 and 1989, is fast reaching the end of its operational life and is in urgent need of intervention. Its planned replacement is essential to maintain network reliability and security of supply to homes and businesses along its route, as well as to the Western Isles which is primarily supplied by two electricity distribution subsea cables from Ardmore point.

### What we are consulting on?

Following the feedback we received from consultation events held in June 2020, over the last 12 months, we have been carrying out detailed design work and engineering assessments to identify a suitable alignment for the replacement line. In response to stakeholder feedback, we have been actively exploring potential mitigations, including assessing the potential for undergrounding as the line passes the Cuillin Hills and where it connects to Fort Augustus substation;

and alternative routes as it passes Kylerhea. With the work now complete, we are now presenting the findings of the engineering and assessment work and seeking your feedback on our proposals.

In addition, we are also undertaking statutory consultation as part of the formal PAN process on our proposed extensions to Broadford and Edinbane substations required as part of the wider OHL works.

A separate section of the consultation event will be dedicated to each substation, and we encourage your feedback on the proposals at this time. The PAN process is a key first step in the town and country planning process for these sites and kickstarts a 12 week consultation period for feedback and comments.

The project welcomes community members to visit one of the face to face or attend one of our virtual consultation events to see how the project has developed and give their feedback on our proposed alignment and ask any questions they may have about the Skye Reinforcement Project.

### Come meet us here:

**Dunvegan Hall, Dunvegan**  
Tuesday 28 September 2021,  
3pm – 7pm

**Broadford Village Hall, Broadford**  
Wednesday 29 September 2021,  
3pm – 7pm

**Glenelg Community Hall, Glenelg**  
Thursday 30 September 2021,  
3pm – 7pm

**Kyleakin Community Hall, Kyleakin**  
Monday 4 October 2021,  
3pm – 7pm

**Glengarry Community Hall, Invergarry**  
Tuesday 5 October 2021,  
3pm – 7pm

**Fort Augustus Village Hall,  
Fort Augustus**  
Wednesday 6 October 2021,  
3pm – 7pm

### Virtual Consultation

Wednesday 13th October 2021, 1pm - 3pm & 5pm - 7pm

If you are unable to join the face to face or virtual consultations and would like to find out more about the proposals, please contact Lisa Marchi, Community Liaison Manager.



**Lisa Marchi**  
Community Liaison Manager

Scottish and Southern Electricity Networks,  
10 Henderson Road,  
Inverness, IV1 1SN



07825 015 507



[lisa.marchi@sse.com](mailto:lisa.marchi@sse.com)



[www.ssen-transmission.co.uk/projects/skye-reinforcement](http://www.ssen-transmission.co.uk/projects/skye-reinforcement)



# Skye Reinforcement Project

## Public Consultation Events

**SSEN Transmission invites you to come and share your views with us on our proposed alignment for the Skye Reinforcement Project.**

### What is happening?

The existing Fort-Augustus to Skye line, which was constructed in three distinct sections between 1956 and 1989, is fast reaching the end of its operational life and is in urgent need of intervention. Its planned replacement is essential to maintain network reliability and security of supply to homes and businesses along its route, as well as to the Western Isles which is primarily supplied by two electricity distribution subsea cables from Ardmore point.

### What we are consulting on?

Following the feedback we received from consultation events held in June 2020, over the last 12 months, we have been carrying out detailed design work and engineering assessments to identify a suitable alignment for the replacement line. In response to stakeholder feedback, we have been actively exploring potential mitigations, including assessing the potential for undergrounding as the line passes the Cuillin Hills and where it connects to Fort Augustus substation;

and alternative routes as it passes Kyclerhea. With the work now complete, we are now presenting the findings of the engineering and assessment work and seeking your feedback on our proposals.

In addition, we are also undertaking statutory consultation as part of the formal PAN process on our proposed extensions to Broadford and Edinbane substations required as part of the wider OHL works.

A separate section of the consultation event will be dedicated to each substation, and we encourage your feedback on the proposals at this time. The PAN process is a key first step in the town and country planning process for these sites and kickstarts a 12 week consultation period for feedback and comments.

The project welcomes community members to visit one of the face to face or attend one of our virtual the consultation events to see how the project has developed and give their feedback on our proposed alignment and ask any questions they may have about the Skye Reinforcement Project.

### Come meet us here:

**Dunvegan Hall, Dunvegan**  
Tuesday 28 September 2021,  
3pm – 7pm

**Broadford Village Hall, Broadford**  
Wednesday 29 September 2021,  
3pm – 7pm

**Glenelg Community Hall, Glenelg**  
Thursday 30 September 2021,  
3pm – 7pm

**Kyleakin Community Hall, Kyleakin**  
Monday 4 October 2021,  
3pm – 7pm

**Glenegarry Community Hall, Invergarry**  
Tuesday 5 October 2021,  
3pm – 7pm

**Fort Augustus Village Hall,  
Fort Augustus**  
Wednesday 6 October 2021,  
3pm – 7pm

**Virtual Consultation**  
Wednesday 13th October 2021, 1pm - 3pm & 5pm - 7pm

If you are unable to join the face to face or virtual consultations and would like to find out more about the proposals, please contact Lisa Marchi, Community Liaison Manager.



**Lisa Marchi**  
Community Liaison Manager  
Scottish and Southern Electricity Networks,  
10 Henderson Road,  
Inverness, IV1 1SN

 07825 015 507

 [lisa.marchi@sse.com](mailto:lisa.marchi@sse.com)

 [www.ssen-transmission.co.uk/projects/skye-reinforcement](http://www.ssen-transmission.co.uk/projects/skye-reinforcement)