

APPENDIX V2-11.3: RECREATION AND TOURISM BASELINE

11.1 Introduction

11.1.1 This appendix sets out more detail on the description of the recreation and tourism baseline carried out by MKA Economics. It presents an overview of the tourism sector and is based on a site visit, from the main arterial road, in April 2022. It also draws on published research to provide an overview of the tourism sector, and reviews maps produced as part of the Landscape and Visual Assessment (see **Figures V2-3.1(S0 to S6) to V2-3.5(S0 to S5)**) to identify recreational routes (core paths, hill tracks and mountain routes) to assess the potential impact on such routes.

11.2 Scope of Assessment and Methodology

11.2.1 This assessment is based on a site visit to the area, covering all seven sections, these being:

- Section 0: Ardmore Substation to Edinbane Substation
- Section 1: Edinbane to North of Sligachan
- Section 2: North of Sligachan to Broadford
- Section 3: Broadford to Kyle Rhea
- Section 4: Kyle Rhea to Loch Cuaich
- Section 5: Loch Cuaich to Invergarry
- Section 6: Invergarry to Fort Augustus

11.2.2 The description of the recreation and tourism audit provides an overview of the assets, attractions and activities from the road side, it summaries the number of key assets and their location. A review of published research has also been completed to summarise the local and national tourism sectors.

11.2.3 This baseline also outlines the core paths, trails and Public Rights of Way from a review of mapping supplied by ASH design+assessment Ltd. as part of the LVIA.

11.3 Overview of Scottish, Highland and Skye and Lochalsh Tourism Sector

11.3.1 According to VisitScotland¹ Scotland attracted over 15.5 million visitors in 2018, contributing an estimated £10.5 billion to the wider Scottish economy and around £6 billion to the Scottish GDP. Tourism Gross Value Added (GVA) in 2017 was calculated at £4.1 billion, representing 3.0 % of Scotland's total GVA. Employment in the tourism sector was recorded at 8.3 % in 2018, accounting for 218,000 individuals, whilst there were more than 14,000 tourism businesses registered in Scotland, equating to 8 % of all registered businesses. Of these, 96 % employed fewer than 50 employees, highlighting the importance of micro and small businesses to the tourism industry.

11.3.2 The share of tourism businesses across the country varied widely, with the highest proportion located in rural areas such as Argyll & Bute (13 %) and Highland (11 %). Within the Highland area, 94 % employed fewer than 50 employees and 70 % of tourism businesses employed fewer than 10 employees. Tourism GVA in Highland was £316.5 million in 2017, representing 7.7 % of the overall tourism GVA and 0.23 % of the Scottish total GVA across all industries. Those employed within tourism in Highland is estimated to be 16,000, whilst it suggests 14,000 are employed in Food and Drink related industry.

¹ VisitScotland (2018): Key Facts on Tourism in Scotland

11.3.3 According to Skye Connect² it is estimated that 1 in 5 workers were employed in tourism related businesses (accommodation and food related) in the Highland constituency area of Lochaber, Skye and Wester Ross in 2018, compared with 1 in 12 in Scotland. Online searches indicate there are currently in excess of 1,000 tourism businesses operating on Skye.

11.3.4 Using the latest Scottish Government Input-Output model of the economy³, it is estimated that tourism activities on Skye, in 2019, generated:

- £211m direct contribution of visitors to Skye.
- £260m of economic output within the tourism industry and its supply chain (direct, indirect and induced effects);
- £140m in GVA (direct, indirect and induced effects);
- 2,849 full time equivalent Scottish jobs within the tourism industry and its supply chain (direct, indirect and induced effects); and
- the equivalent of 0.09 % of Scottish GDP.

11.3.5 These impacts are based on an estimated 650,000 visitors to Skye in 2019. Most of these figures are concentrated within the Isle of Skye. The Skye Visitor Survey 2019 indicated a range of popular locations where visitors had visited on their trip, these included:

- Portree (45 %)
- Old Man of Storr (27 %)
- Fairy Pools (19 %)
- Talisker Distillery (18 %)
- Dunvegan Castle (15 %) – Skye's most popular paid attraction with over 175,000 visits in 2019.

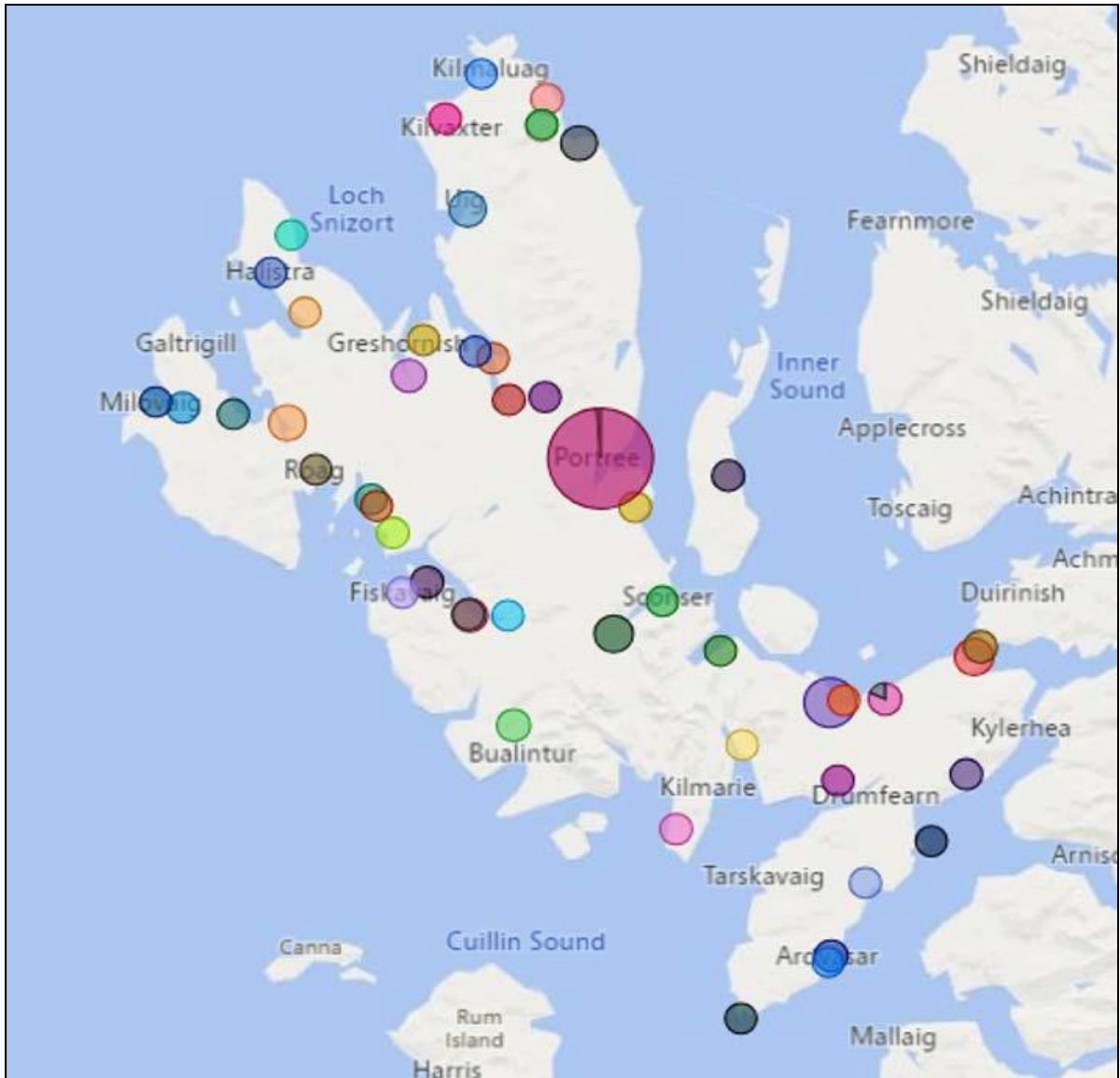
11.3.6 On the mainland, the main visitor activity is centred around Fort Augustus, with a range of popular attractions including the Caledonian Canal Centre, the Caledonian Canal itself and access to Loch Ness via cruise boats, and popular scenery and walks such as General Wade's Military Roads.

11.3.7 Whilst visiting Skye, Guest Houses and B&B's are by far the most popular accommodation, and the following **Figure 1** shows the popular locations by visitors in 2019, many of which are in coastal locations, notably Portree. The size of circles represents the percentage of visitors. The colours represent different settlements.

² Skye Connect (2020): Isle of Skye and Isle of Raasay Tourism Economic Impact

³ Scottish Government (2018): Scottish Government Input-Output tables

Figure 1: Popular Visitor Accommodation Locations, 2019



Source: Isle of Skye and Isle of Raasay Tourism Economic Impact, 2019

11.3.8 A review of AirDNA data also confirms the popularity of AirBnB rental properties, as shown in **Figure 2** below. There are currently over 1,300 properties active on AirBnB, and associated, third party collaborative platforms (such as Vrbo). The purple dots represent entire homes and the blue dots represent rooms within properties.

Figure 2: AirBnB Rental Locations, 2019



Source: Airdna, 2022

11.3.9 **Figures 3a** and **3b** overleaf highlight the location of the most popular tourism attractions on Skye and in Lochalsh.

Figure 3a: Most Popular Tourist Attractions

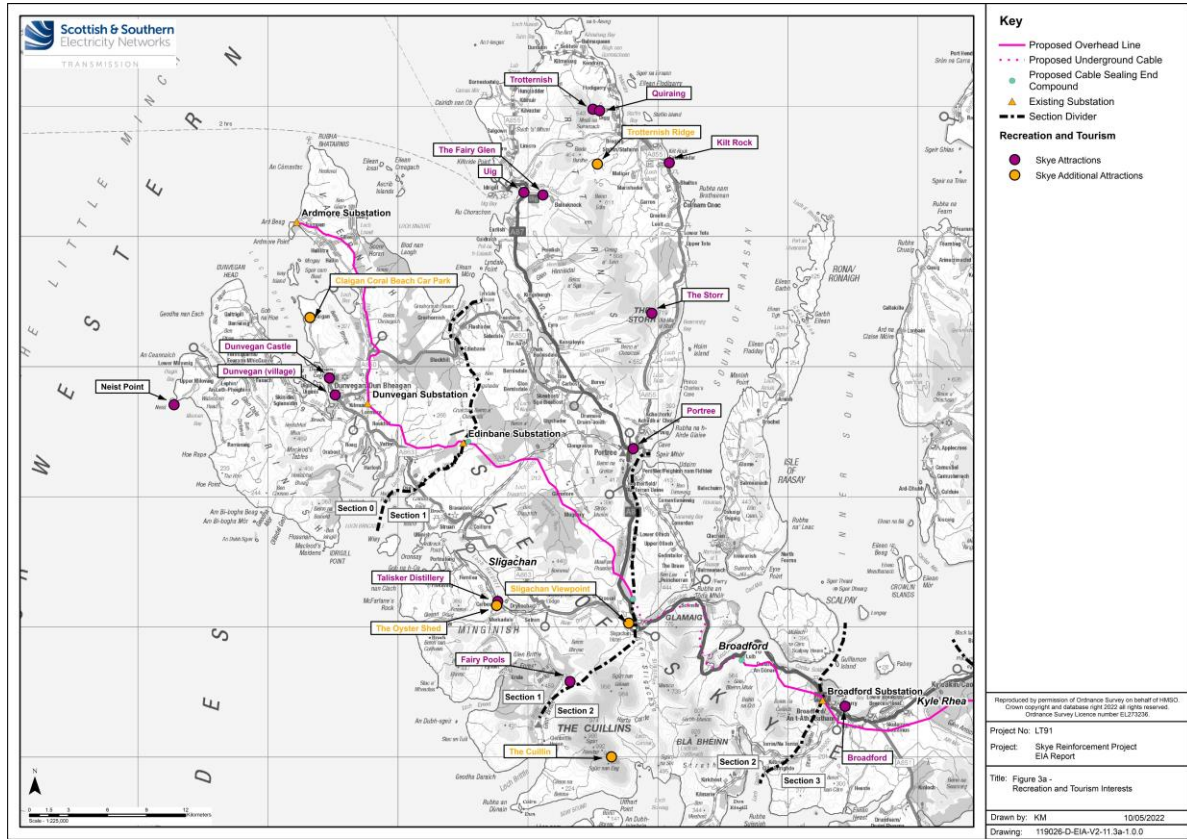
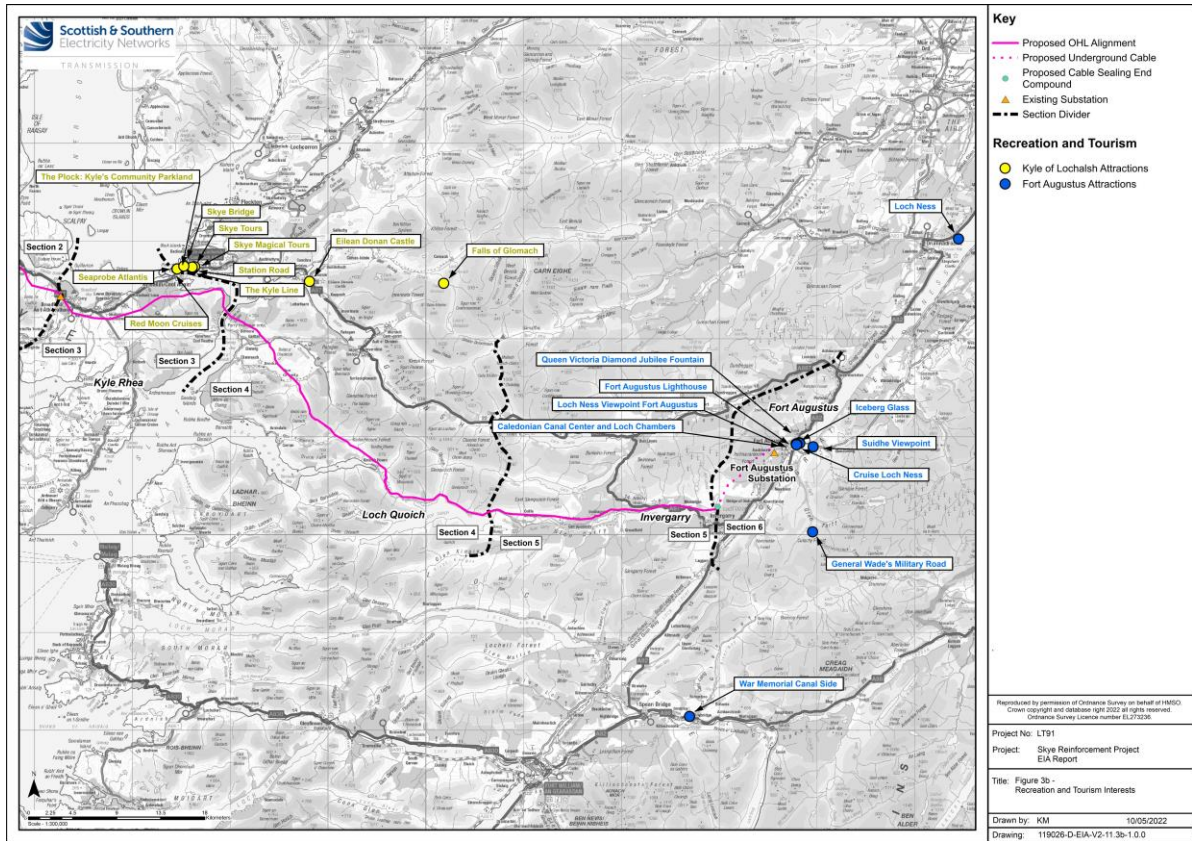


Figure 3b: Most Popular Tourist Attractions



11.3.10A review of the above mapping on accommodation provision and popular visitor attractions highlights that the OHL has been designed to avoid popular tourist locations and areas of national beauty. One particular area of note is around Sligachan, and in this location it is proposed that the technology to be used for the part of the transmission connection through Section 2, past Sligachan and the Cullin Hills NSA, would be underground cables.

11.4 Section 0: Ardmore Substation to Edinbane Substation Baseline

11.4.1 Section 0 runs from Ardmore Substation to Edinbane Substation. The route driven during the site visit runs alongside the alignment of the OHL and is 18 km long and takes in the settlements of Dunvegan, Watnish and Hallin. An overview of the Section is presented in **Table 1-1** below.

Table 1-1: Section 0 Overview

Section	Design Solution	Other Ancillary / Associated Works
Section 0: Ardmore Substation to Edinbane Substation	Wood pole OHL for the majority of this Section (approximately 27 km in length), broadly following route of existing OHL with deviations at Trumpan, Hallin and Glen Heysdal. Wood pole structures approximately 13 m in height (including insulators and support), depending on ground conditions. Approximately 500 m of the connection into Ardmore Substation is likely to be underground cable. This is to be confirmed.	Temporary construction access, wood pole working areas and construction compounds. Dismantling of the existing 132 kV wood pole OHL

11.4.2 **Table 1-2** summarises the assets, activities and attractions drawn from the site visit. More detail is presented in the Annex to this report.

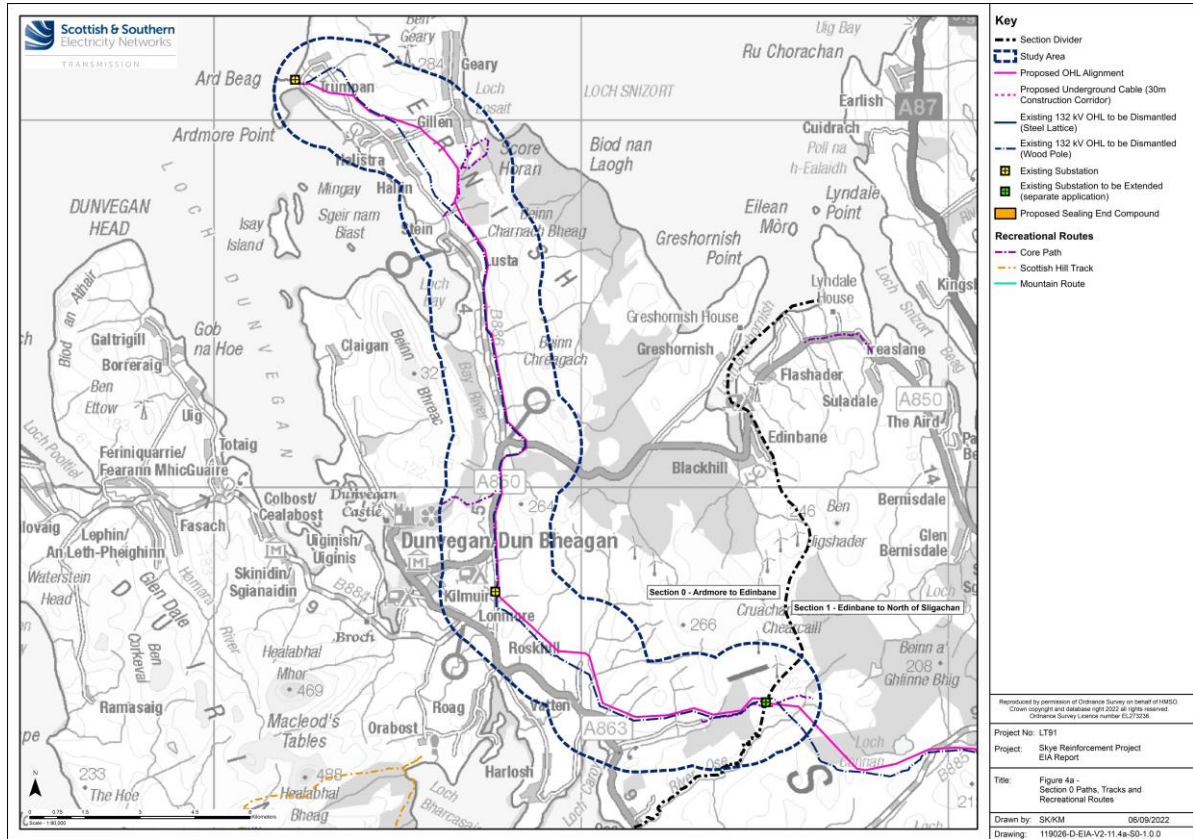
Table 1-2: Section 0 Overview of Assets, Activities and Attractions

Subject	Type	Number
Accommodation	Hotels	7
	B&B / Guest Houses	5
	Self-Catering	14
	Camping & Caravan	4
	Hostels	0
Activities	Boat Trips	1
	Bus Tours	0
	Outdoor Activities	1
	Sport & Leisure	0
Attractions	Events	0
	Shops	0
	Arts & Crafts	6
	Cafes	2
	Restaurants	4
	Visitor Centres / Other	2
	Other Services	0
Guides	Walks	1
	History	3
	Wildlife	0

Subject	Type	Number
	Activities	0

11.4.3 The route is shown in **Figure 4a** below, this highlights the core paths and hill tracks within 2.5 km of the proposed OHL alignment.

Figure 4a: Section 0 Paths, Tracks and Recreational Routes



Source: ASH, 2022

11.4.4 The Figure above illustrates that there are only two core paths within the 2.5 km buffer of the OHL, one of which is close to Dunvegan and the other on the Waternish peninsula near Score Horan. There are limited access routes in close proximity to the OHL, and the research suggests there would be negligible impacts for recreation users and tourists as a result of the construction and operation of the OHL.

11.5 Section 1: Edinbane to North of Sligachan Baseline

11.5.1 Section 1 runs from Edinbane Substation to North of Sligachan. The route driven during the site visit on the road that runs alongside the alignment of the OHL is 56 km in length and takes in the settlements of Carbost, Balgown, Struan, Ose, Caroy, Edinbane and Portree. An overview of the Section is presented in **Table 1-3** below.

Table 1-3: Section 1 Overview

Section	Design Solution	Other Ancillary / Associated Works
Section 1 – Edinbane to North of Sligachan;	Steel lattice OHL for the entirety of this Section (approximately 20 km in length) from a new sealing end compound near Edinbane Substation at approximate grid reference 135403, 844224 to a terminal tower and cable sealing end compound at approximate grid reference 148068 832110. Steel lattice towers approximately 28 m in height, although tower heights may be increased where local topography dictates in order to achieve sufficient clearance distances. Broadly follows route of existing OHL, with a deviation at Glenmore and Achaleathan.	Temporary and permanent construction access and steel lattice tower working areas, cable sealing end compounds, formation of new bellmouths off the public road, construction compounds and borrow pits. Dismantling of the existing 132 kV wood pole OHL

11.5.2 **Table 1-4** summarises the assets, activities and attractions drawn from the site visit. More detail is presented in the Annex to this report.

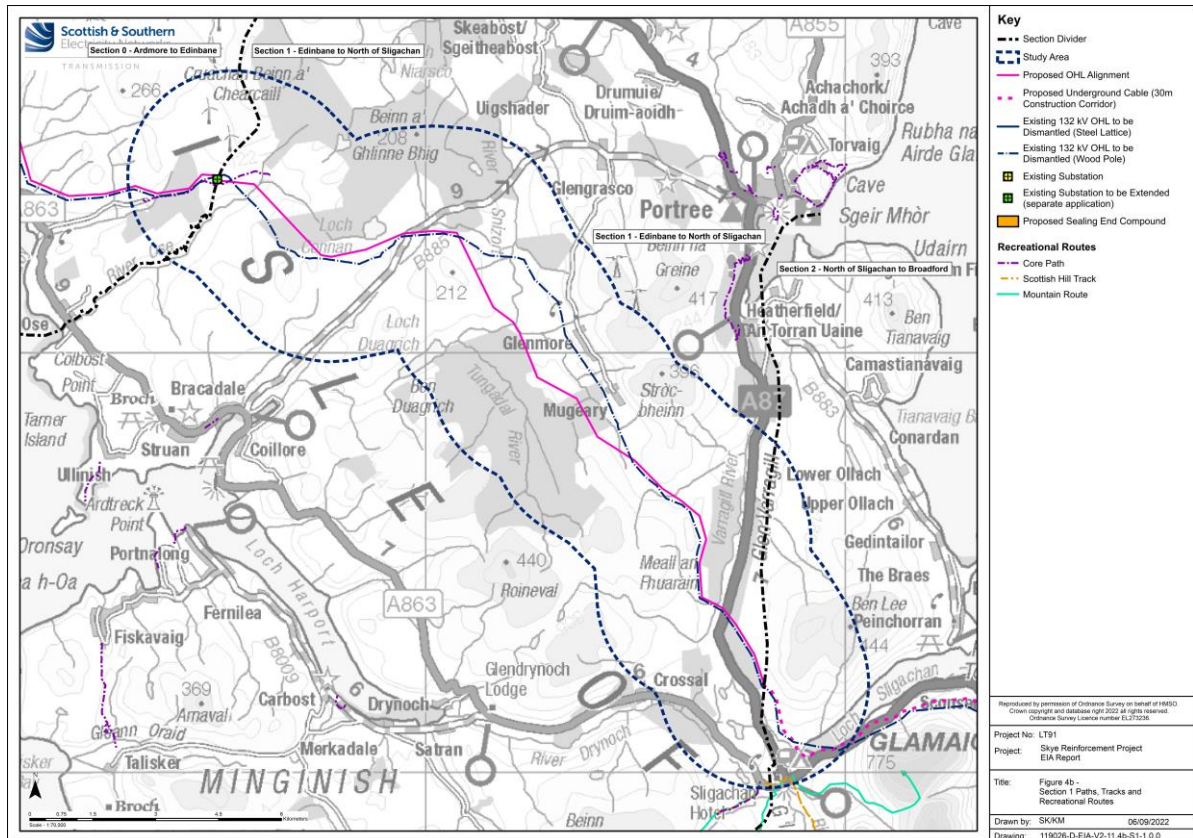
Table 1-4: Section 1 Overview of Assets, Activities and Attractions

Subject	Type	Number
Accommodation	Hotels	7
	B&B / Guest Houses	14
	Self-Catering	18
	Camping & Caravan	4
	Hostels	5
Activities	Boat Trips	1
	Bus Tours	0
	Outdoor Activities	0
	Sport & Leisure	3
Attractions	Events	2
	Shops	4
	Arts & Crafts	8
	Cafes	3
	Restaurants	0
	Visitor Centres / Other	2
	Other Services	1
Guides	Walks	5

Subject	Type	Number
	History	1
	Wildlife	0
	Activities	3

11.5.3 The route is shown in **Figure 4b** below, this highlights the core paths and hill tracks within 2.5 km of the proposed OHL alignment.

Figure 4b: Section 1 Paths, Tracks and Recreational Routes



Source: ASH, 2022

11.5.4 The Figure illustrates that there are a small number of hill tracks, core paths and a mountain towards the south of Section 1, and a small core path at the norther edge. There are limited access routes in close proximity to the OHL, and the research suggests there would be negligible impact for recreation users and tourists as a result of the construction and operation of the OHL.

11.6 Section 2: North of Sligachan to Broadford Baseline

11.6.1 Section 2 runs from North of Sligachan to Broadford. The route driven during the site visit on the road that runs alongside the alignment of the OHL is 27 km in length and takes in the settlements of Strollamus, Dunan, Ard Doch, Luib, Sconser, Raasay and Slighan. An overview of the Section is presented in **Table 1-5** below.

Table 1-5: Section 2 Overview

Section	Design Solution	Other Ancillary / Associated Works
Section 2 – North of Sligachan to Broadford;	Underground cable for approximately 14 km, from a new sealing end compound at approximate grid reference 148068 832110 (as per Section 1) to a new cable sealing end compound near Luib (approximate grid reference 156389 827438). From here, a new steel lattice OHL proposed to Broadford Substation, broadly following route of existing OHL.	Temporary and permanent construction access, underground cable and steel lattice tower working areas, cable sealing end compounds, formation of new bellmouths off the public road, construction compounds and borrow pits. Dismantling of the existing 132 kV wood pole OHL

11.6.2 **Table 1-6** summarises the assets, activities and attractions drawn from the site visit. More detail is presented in the Annex to this report.

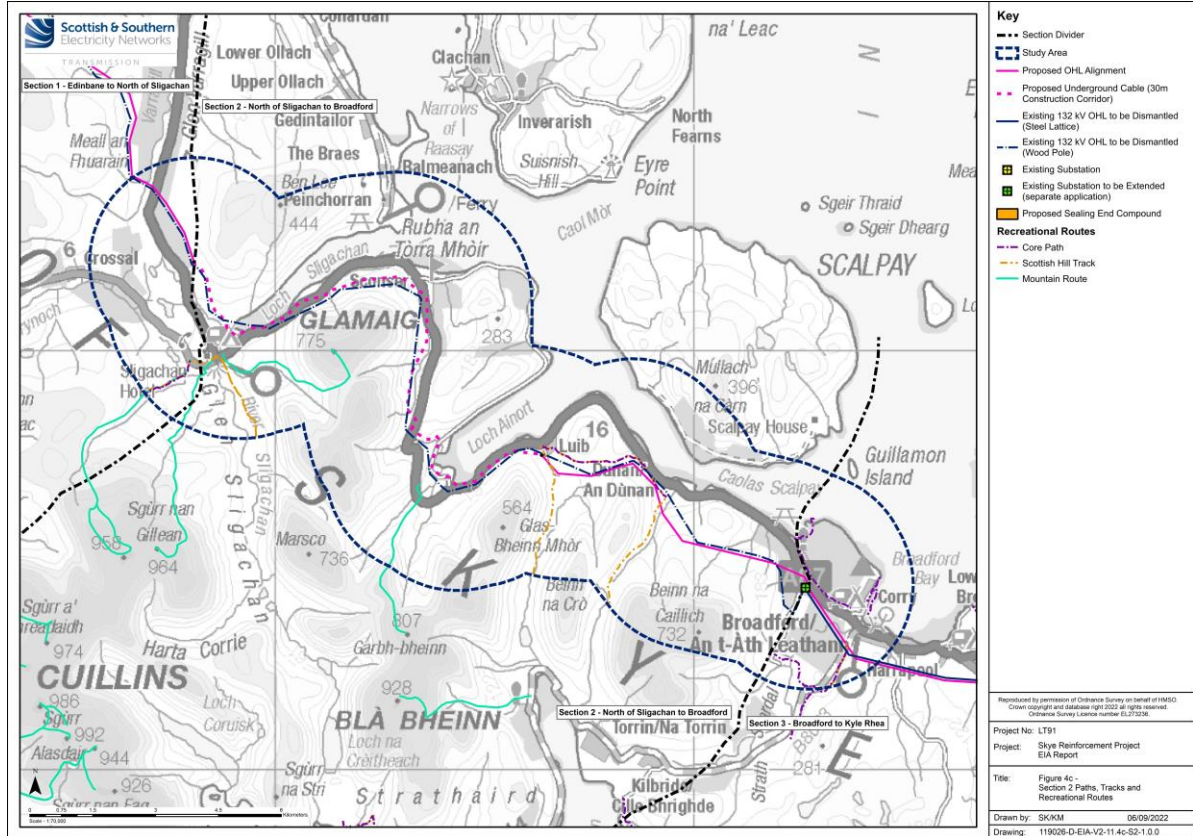
Table 1-6: Section 2 Overview of Assets, Activities and Attractions

Subject	Type	Number
Accommodation	Hotels	2
	B&B / Guest Houses	3
	Self-Catering	10
	Camping & Caravan	0
	Hostels	0
Activities	Boat Trips	0
	Bus Tours	1
	Outdoor Activities	0
	Sport & Leisure	1
Attractions	Events	0
	Shops	0
	Arts & Crafts	0
	Cafes	1
	Restaurants	0
	Visitor Centres / Other	1
	Other Services	1
Guides	Walks	3
	History	1
	Wildlife	0

Subject	Type	Number
	Activities	0

11.6.3 The route is presented in **Figure 4c** below, this highlights the core paths and hill tracks within 2.5 km of the proposed OHL alignment.

Figure 4c: Section 2 Paths, Tracks and Recreational Routes



Source: ASH, 2022

11.6.4 There are a number of hill tracks and mountain routes as well as core paths around the popular Sligachan area, although it is noted that the Proposed Development would be underground in this location. The other core paths are around Broadford. There are limited access routes in close proximity to the OHL, and the research suggests there would be negligible impacts for recreation users and tourists as a result of the construction and operation of the Proposed Development, notably as the cable would be buried underground in this location.

11.7 Section 3: Broadford to Kyle Rhea Baseline

11.7.1 Section 3 runs from North of Sligachan to Broadford. The route driven during the site visit on the road that runs alongside the alignment of the OHL is 17.5 km in length and takes in the settlements of Kyleackin, Breakish, Skulamush and Kyle Rhea. An overview of the Site is presented in **Table 1-7** below.

Table 1-7: Section 3 Overview

Section	Design Solution	Other Ancillary / Associated Works
Section 3 – Broadford to Kyle Rhea;	<p>Steel lattice OHL for the entirety of this Section (approximately 20 km in length) from Broadford Substation to the existing crossing towers at Kyle Rhea. Steel lattice towers approximately 28 m in height, although tower heights may be increased where local topography dictates in order to achieve sufficient clearance distances. Follows route of existing OHL, with a deviation to the south of the existing OHL through the Kinloch and Kyleakin Hills SAC.</p> <p>Due to sensitivities of routeing a new OHL through the Kinloch and Kyleakin Hills SAC, an alternative option through Glen Arroch and Kylerhea (albeit also through the SAC) continues to be considered. This would comprise a new steel lattice OHL from Broadford Substation to the existing OHL crossing towers at Kyle Rhea via Glen Arroch (approximately 20 km in length).</p>	<p>Temporary and permanent construction access and steel lattice tower working areas, formation of new bellmouths off the public road, construction compounds and borrow pits.</p> <p>Dismantling of the existing 132 kV steel lattice OHL</p>

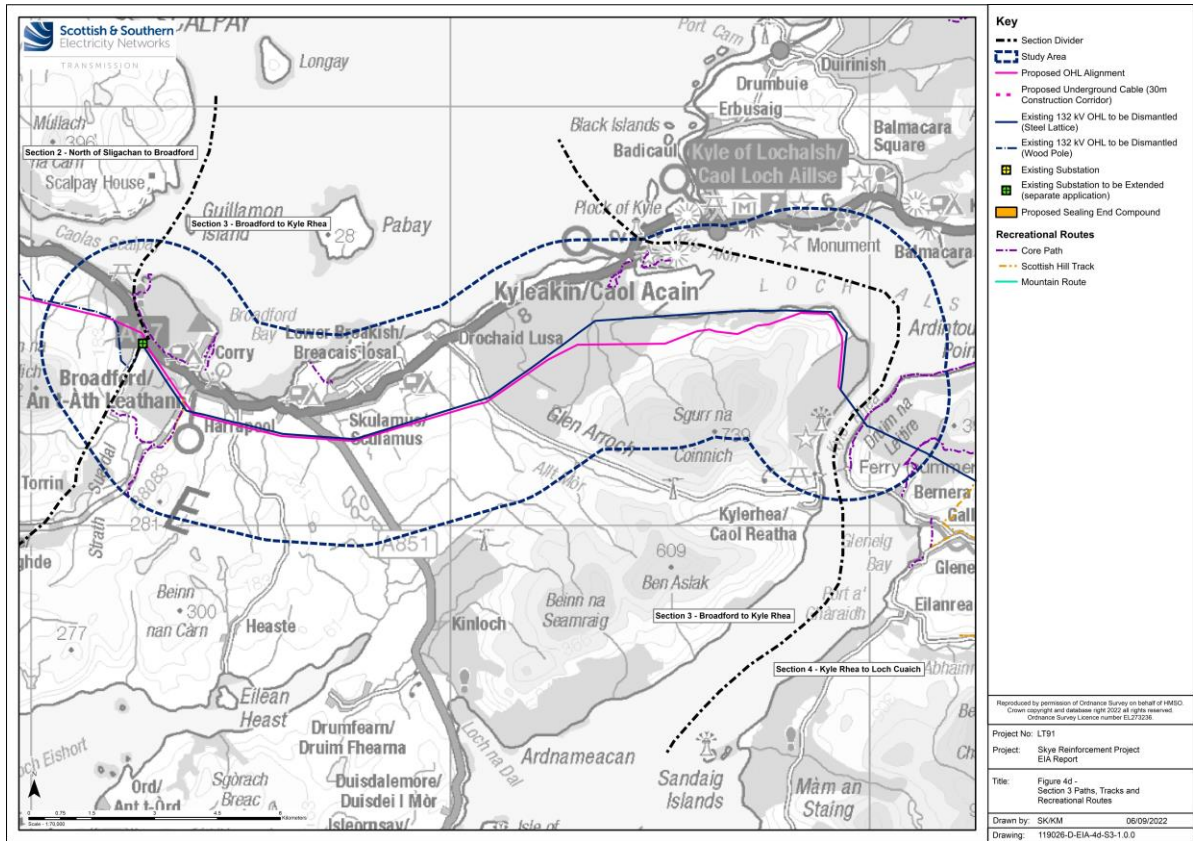
11.7.2 **Table 1-8** summarises the assets, activities and attractions drawn from the site visit. More detail is presented in the Annex to this report.

Table 1-8: Section 3 Overview of Assets, Activities and Attractions

Subject	Type	Number
Accommodation	Hotels	6
	B&B / Guest Houses	24
	Self-Catering	13
	Camping & Caravan	1
	Hostels	4
Activities	Boat Trips	0
	Bus Tours	0
	Outdoor Activities	0
	Sport & Leisure	0
Attractions	Events	0
	Shops	1
	Arts & Crafts	7
	Cafes	4
	Restaurants	9
	Visitor Centres / Other	5
	Other Services	0
Guides	Walks	3
	History	3
	Wildlife	1
	Activities	0

11.7.3 The route is shown on **Figure 4d** below, this highlights the core paths and hill tracks within 2.5 km of the proposed OHL alignment.

Figure 4d: Section 3 Paths, Tracks and Recreational Routes



Source: ASH, 2022

11.7.4 As noted previously, there are core paths around Broadford and in and around both Kyleakin and Kyle of Lochalsh, which are on the edge of the LVIA 2.5 km study area. There are limited access routes in close proximity to the OHL, and the research suggests there would be negligible impacts for recreation users and tourists as a result of the construction and operation of the Proposed Development.

11.8 Section 4: Kyle Rhea to Loch Cuaich Baseline

11.8.1 Section 4 runs from North of Sligachan to Broadford. The route driven during the site visit on the road that runs alongside the alignment of the OHL is 117 km in length and takes in the settlements of Glen Shiel, Inverinate, Auchtertyre, Kirkton, Balmacara and Kyle of Lochalsh. An overview of the Section is presented in **Table 1-9** below.

Table 1-9: Section 4 Overview

Section	Design Solution	Other Ancillary / Associated Works
Section 4 – Kyle Rhea to Loch Cuaich;	Steel lattice OHL for the entirety of this Section (approximately 38 km in length) from the existing crossing towers at Kyle Rhea to Loch Quoich Dam (approximate grid reference 207192 802419). Steel lattice towers approximately 28 m in height, although tower heights may be increased where local topography dictates in order to achieve sufficient clearance distances. Follows route of existing OHL, except for a deviation at Loch Coire Shubh near Kinlochhourn.	Temporary and permanent construction access and steel lattice tower working areas, formation of new bellmouths off the public road, construction compounds and borrow pits. Dismantling of the existing 132 kV steel lattice OHL

11.8.2 **Table 1-10** summarises the assets, activities and attractions drawn from the site visit. More detail is presented in the Annex to this report.

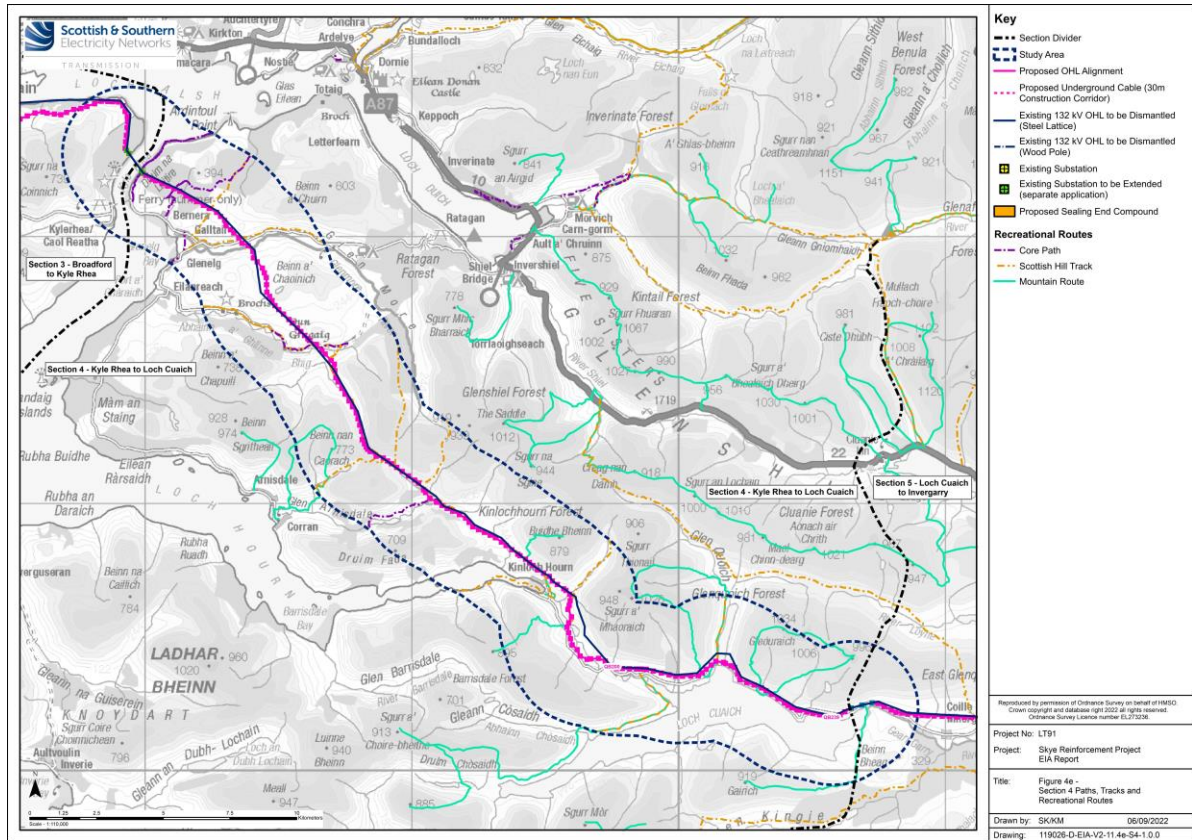
Table 1-10: Section 4 Overview of Assets, Activities and Attractions

Subject	Type	Number
Accommodation	Hotels	8
	B&B / Guest Houses	18
	Self-Catering	3
	Camping & Caravan	6
	Hostels	1
Activities	Boat Trips	0
	Bus Tours	0
	Outdoor Activities	1
	Sport & Leisure	1
Attractions	Events	0
	Shops	1
	Arts & Crafts	5
	Cafes	4
	Restaurants	2
	Visitor Centres / Other	7
	Other Services	2
Guides	Walks	4
	History	3
	Wildlife	1

Subject	Type	Number
	Activities	2

11.8.3 The route is shown on **Figure 4e** below, this highlights the core paths and hill tracks within 2.5 km of the proposed OHL alignment.

Figure 4e: Section 4 Paths, Tracks and Recreational Routes



Source: ASH, 2022

11.8.4 As one of the longest, yet least populated and visited, of the Sections, there are many hill tracks and mountain routes along Section 4. There are also core paths in and around the Kyle of Lochalsh. There are a number of routes in close proximity to the OHL, and the research suggests that there would be negligible impacts for recreation users and tourists as a result of the construction and operation of the Proposed Development.

11.9 Section 5: Loch Cuaich to Invergarry Baseline

11.9.1 Section 5 runs from Loch Cruaich to Invergarry. The route driven during the site visit on the road that runs alongside the alignment of the OHL is 34 km in length and takes in the settlement of Glenelg. An overview of the Section is presented in **Table 1-11** below.

Table 1-11: Section 5 Overview

Section	Design Solution	Other Ancillary / Associated Works
Section 5 – Loch Cuaich to Invergarry;	Steel lattice OHL for the entirety of this Section (approximately 23 km in length) from Loch Quoich Dam (approximate grid reference 206992 802484) to a new cable sealing end	Temporary and permanent construction access and steel lattice tower working areas, formation of new bellmouths off the public road, construction compounds and borrow pits.

Section	Design Solution	Other Ancillary / Associated Works
	compound near Loch Lundie (approximate grid reference 251139 805410). Steel lattice towers approximately 28 m in height, although tower heights may be increased where local topography dictates to achieve sufficient clearance distances. Broadly follows route of existing OHL.	Decommissioning of the existing 132 kV wood pole (Quoich to Aberchalder) OHL

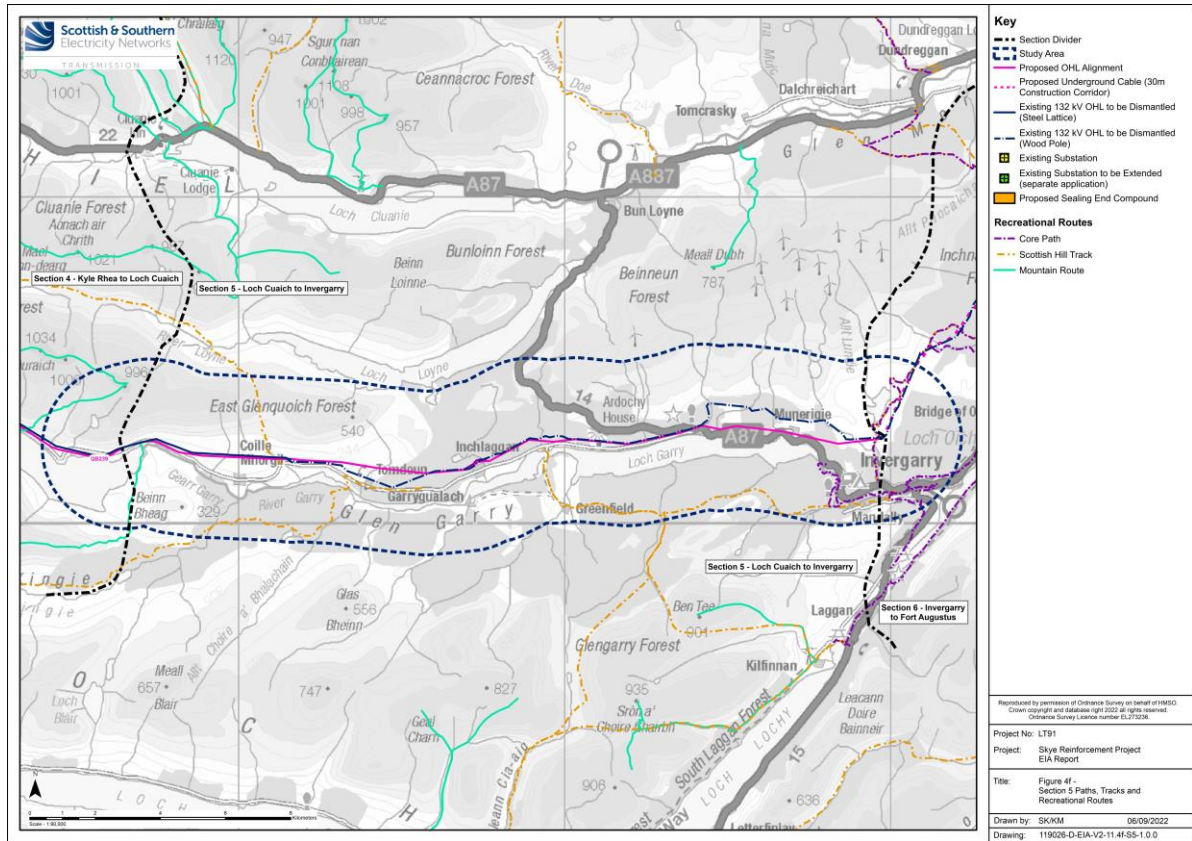
11.9.2 **Table 1-12** summarises the assets, activities and attractions drawn from the site visit. More detail is presented in the Annex to this report.

Table 1-12: Section 5 Overview of Assets, Activities and Attractions

Subject	Type	Number
Accommodation	Hotels	1
	B&B / Guest Houses	2
	Self-Catering	1
	Camping & Caravan	1
	Hostels	0
Activities	Boat Trips	0
	Bus Tours	0
	Outdoor Activities	0
	Sport & Leisure	0
Attractions	Events	0
	Shops	0
	Arts & Crafts	0
	Cafes	1
	Restaurants	0
	Visitor Centres / Other	1
	Other Services	0
Guides	Walks	2
	History	0
	Wildlife	0
	Activities	0

11.9.3 The route is shown on **Figure 4f** below, this highlights the core paths and hill tracks within 2.5 km of the proposed OHL alignment.

Figure 4f: Section 5 Paths, Tracks and Recreational Routes



Source: ASH, 2022

11.9.4 Invergarry, like other settlements, has a series of core paths, and there are other hill tracks in the Glen Garry Section. There are a number of routes in close proximity to the OHL, and the research suggests there would be negligible impacts for recreation users and tourists as a result of the construction and operation of the OHL.

11.10 Section 6: Invergarry to Fort Augustus Baseline

11.10.1 Section 6 runs from Loch Cruaich to Invergarry. The route driven during the site visit on the road that runs along the alignment of the transmission connection is 11 km in length and takes in the settlement of Invergarry and Fort Augustus. An overview of the Section is presented in **Table 1-13** below.

Table 1.13: Section 6 Overview

Section	Design Solution	Other Ancillary / Associated Works
Section 6 – Invergarry to Fort Augustus.	An underground cable for the entirety of this Section, from a new cable sealing end compound near Loch Lundy (approximate grid reference 251139 805410) to Fort Augustus Substation, a distance of approximately 9.5 km.	Temporary and permanent construction access, underground cable working areas, cable sealing end compounds, construction compounds and borrow pits. Dismantling of the existing 132 kV wood pole (Fort Augustus to Skye Tee) OHL

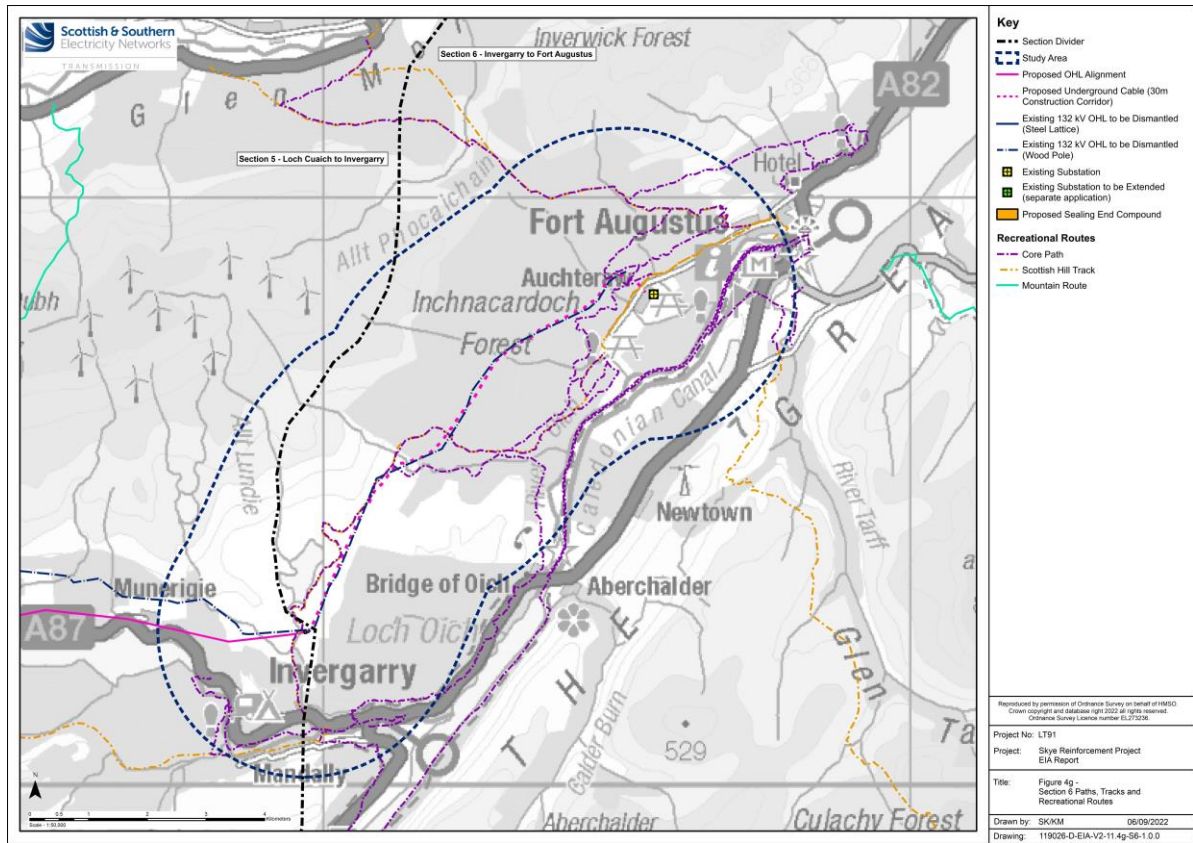
11.10.2 **Table 1-14** summarises the assets, activities and attractions drawn from the site visit. More detail is presented in the Annex to this report.

Table 1-14: Section 6 Overview of Assets, Activities and Attractions

Subject	Type	Number
Accommodation	Hotels	7
	B&B / Guest Houses	12
	Self-Catering	5
	Camping & Caravan	0
	Hostels	0
Activities	Boat Trips	3
	Bus Tours	1
	Outdoor Activities	1
	Sport & Leisure	2
Attractions	Events	0
	Shops	3
	Arts & Crafts	5
	Cafes	6
	Restaurants	6
	Visitor Centres / Other	4
	Other Services	1
Guides	Walks	4
	History	0
	Wildlife	0
	Activities	1

11.10.3 The route is shown on **Figure 4g** below, this highlights the core paths and hill tracks within 2.5 km of the proposed OHL alignment.

Figure 4g: Section 6 Paths, Tracks and Recreational Routes



Source: ASH, 2022

11.10.4 The Fort Augustus to Invergarry Section has a network of core paths, but it is a Section where the Proposed Development is proposed to be underground. On this basis it is considered that there would be negligible impacts for recreation users and tourists as a result of the construction and operation of the OHL.

ANNEX 1: ACCOMMODATION AUDIT

Section 0

Section	Category	Type	Name
0	Accommodation	Hotel	HAME Hotel
0	Accommodation	Hotel	Atholl House Hotel
0	Accommodation	Hotel	Blas Inn
0	Accommodation	Hotel	The Dunvegan Hotel
0	Accommodation	Hotel	Stein Inn
0	Accommodation	Hotel	Greshornish House Hotel
0	Accommodation	Hotel	Redwood House Hotel
0	Accommodation	B&B/Guest Houses	Argyll House B&B
0	Accommodation	B&B/Guest Houses	Kilmuir Park B&B
0	Accommodation	B&B/Guest Houses	Millburn B&B
0	Accommodation	B&B/Guest Houses	Minnies Rooms B&B
0	Accommodation	B&B/Guest Houses	The Tables Guest House
0	Accommodation	Self Catering	Ullinish Country Lodge
0	Accommodation	Self Catering	Tranquil Glen Lodge
0	Accommodation	Self Catering	Rainbow Cottage
0	Accommodation	Self Catering	The Lookout & The Deckout Self Catering
0	Accommodation	Self Catering	Auld Orwell Self Catering
0	Accommodation	Self Catering	La Bergerie Self Catering
0	Accommodation	Self Catering	Eilean Islay Cottage
0	Accommodation	Self Catering	Hazelbank B&B
0	Accommodation	Self Catering	Auld Mission Cottage
0	Accommodation	Self Catering	Broad Reach Cottage
0	Accommodation	Self Catering	Tir Nan Og Cottage
0	Accommodation	Self Catering	Talamh ur Cottage
0	Accommodation	Self Catering	The Two Byres Self Catering
0	Accommodation	Self Catering	Bitacora Self Catering

Section	Category	Type	Name
0	Accommodation	Camping & Caravan	Lotus Camping Pods
0	Accommodation	Camping & Caravan	Kinloch Caravan & Camping
0	Accommodation	Camping & Caravan	Dunvegan Camping Pods
0	Accommodation	Camping & Caravan	Ardmore Pods
0	Accommodation	Hostels	
0	Activities	Boat Trips	Dunvegan Boat Trips
0	Activities	Bus Tours	
0	Activities	Outdoor Activities	Divers Eye Centre
0	Activities	Sport & Leisure	
0	Attractions	Events	
0	Attractions	Shops	
0	Attractions	Arts & Crafts	Alpacha Co.
0	Attractions	Arts & Crafts	St Kilda Shop & Gallery
0	Attractions	Arts & Crafts	Croft Studio
0	Attractions	Arts & Crafts	Skye Silks Handweaving
0	Attractions	Arts & Crafts	Dandelion Designs & Images Gallery
0	Attractions	Arts & Crafts	Skye Silver
0	Attractions	Cafés	Jann's Café
0	Attractions	Cafés	Dunvean Café
0	Attractions	Restaurants	The Three Chimneys
0	Attractions	Restaurants	The Old School
0	Attractions	Restaurants	Waterside Bistro
0	Attractions	Restaurants	The Misty
0	Attractions	Visitor Centres/Other	Skyeskyns Tannery & Exhibition
0	Attractions	Visitor Centres/Other	Jetty & Shoreside
0	Attractions	Other Services	
0	Guide	Walks	Dark Sky Viewpoint

Section	Category	Type	Name
0	Guide	History	Dunvegan Castle & Gardens
0	Guide	History	Waterish War Memorial
0	Guide	History	MacAskill Museum
0	Guide	Wildlife	
0	Guide	Activities	

Section 1

Section	Category	Type	Name
1	Accommodation	Hotel	Taigh Ailean Hotel
1	Accommodation	Hotel	Edinbane Hotel
1	Accommodation	Hotel	Skaebost Hotel & Restaurant
1	Accommodation	Hotel	Cuillin Hills Hotel
1	Accommodation	Hotel	The Royal Hotel
1	Accommodation	Hotel	The Rosedale Hotel
1	Accommodation	Hotel	Caledonian Hotel
1	Accommodation	B&B/Guest Houses	Fineviews B&B
1	Accommodation	B&B/Guest Houses	Drynoch B&B
1	Accommodation	B&B/Guest Houses	Farmhouse B&B
1	Accommodation	B&B/Guest Houses	Balmeanach B&B
1	Accommodation	B&B/Guest Houses	Roskhill House B&B
1	Accommodation	B&B/Guest Houses	Ardmorn B&B
1	Accommodation	B&B/Guest Houses	Ronan House B&B
1	Accommodation	B&B/Guest Houses	Hillcroft B&B
1	Accommodation	B&B/Guest Houses	Skeabost View B&B
1	Accommodation	B&B/Guest Houses	Strathayre B&B
1	Accommodation	B&B/Guest Houses	The Skye Inn
1	Accommodation	B&B/Guest Houses	Skye Haven
1	Accommodation	B&B/Guest Houses	The Pink House
1	Accommodation	B&B/Guest Houses	Rockview
1	Accommodation	Self Catering	Loch View Lodge

Section	Category	Type	Name
1	Accommodation	Self Catering	Marine House
1	Accommodation	Self Catering	The Apartment
1	Accommodation	Self Catering	Portree Bay House
1	Accommodation	Self Catering	Ard Dearg Bungalow
1	Accommodation	Self Catering	Harbour House
1	Accommodation	Self Catering	Brightwater Cottage
1	Accommodation	Self Catering	Isle of Skye Holiday Cottages
1	Accommodation	Self Catering	Marsco & Otter Lodge
1	Accommodation	Self Catering	Manish Self Catering
1	Accommodation	Self Catering	Meadle Self Catering
1	Accommodation	Self Catering	The Causeway Self Catering
1	Accommodation	Self Catering	Crofters Cabin
1	Accommodation	Self Catering	Bracadale Holiday Cottage
1	Accommodation	Self Catering	Edinbane Lodge
1	Accommodation	Self Catering	Snugg Self Catering
1	Accommodation	Self Catering	Fasgadh Self Catering
1	Accommodation	Self Catering	Moorside Holiday Cottages
1	Accommodation	Camping & Caravan	Glenbrittle Campsite
1	Accommodation	Camping & Caravan	Loch Caroy Pods
1	Accommodation	Camping & Caravan	Skye Camping & Caravan Site
1	Accommodation	Camping & Caravan	Portree Campsite
1	Accommodation	Hostels	Skywalker Hostel
1	Accommodation	Hostels	Croft Bunkhouse
1	Accommodation	Hostels	The Old In & Waterfront Bunkhouse
1	Accommodation	Hostels	Portree Hostel
1	Accommodation	Hostels	Portree Independent Hostel
1	Activities	Boat Trips	Skye Marine Boat Trips
1	Activities	Bus Tours	

Section	Category	Type	Name
1	Activities	Outdoor Activities	
1	Activities	Sport & Leisure	ACE Target Sports
1	Activities	Sport & Leisure	Skye Gym
1	Activities	Sport & Leisure	Third Ridge is Skye's indoor climbing wall
1	Attractions	Events	Isle of Skye Highland Games 2022
1	Attractions	Events	Skye Live Festival 2022
1	Attractions	Shops	The Oyster Shed
1	Attractions	Shops	Struan Shop
1	Attractions	Shops	Co-op, Portree
1	Attractions	Shops	Inside Out, Portree
1	Attractions	Arts & Crafts	Loch Harport Gallery
1	Attractions	Arts & Crafts	Talisker Studio
1	Attractions	Arts & Crafts	John Bathgate Gallery
1	Attractions	Arts & Crafts	Old Byre Skye Gallery
1	Attractions	Arts & Crafts	Skyescape Gallery
1	Attractions	Arts & Crafts	Dun Studio
1	Attractions	Arts & Crafts	Edinbane Pottery
1	Attractions	Arts & Crafts	Island at the Edge Knitwear
1	Attractions	Cafés	Café Cuil
1	Attractions	Cafés	Sky Walker Café & Shop
1	Attractions	Cafés	Bob Myrtle Café
1	Attractions	Restaurants	
1	Attractions	Visitor Centres/Other	Talisker Distillery & Visitor Centre
1	Attractions	Visitor Centres/Other	Loch Caroy Jetty
1	Attractions	Other Services	Manitoun Holistic Therapies
1	Guide	Walks	Sightseeing, Waterfalls, Beaches
1	Guide	Walks	Minginish Tourist Route

Section	Category	Type	Name
1	Guide	Walks	Struan Jetty
1	Guide	Walks	Dun Beag Broch
1	Guide	Walks	Scorrybreac Walk
1	Guide	History	War Memorial
1	Guide	Wildlife	
1	Guide	Activities	Boat Hire
1	Guide	Activities	Sea Skye Boat Tours
1	Guide	Activities	Skye Riding Centre

Section 2

Section	Category	Type	Name
2	Accommodation	Hotel	Sconser Lodge Hotel
2	Accommodation	Hotel	Sligachan Hotel
2	Accommodation	B&B/Guest Houses	Lodge on the Loch
2	Accommodation	B&B/Guest Houses	The Old Schoolhouse B&B
2	Accommodation	B&B/Guest Houses	Loch Aluinn B&B
2	Accommodation	Self Catering	The Tin Sheds
2	Accommodation	Self Catering	Bothy Choibhir
2	Accommodation	Self Catering	Seadrift Self Catering
2	Accommodation	Self Catering	Skye Picture House
2	Accommodation	Self Catering	Oir na Mara
2	Accommodation	Self Catering	Ard Doch Self Catering
2	Accommodation	Self Catering	Aberlour House
2	Accommodation	Self Catering	Luib House
2	Accommodation	Self Catering	Mackenxies Peak Self Catering
2	Accommodation	Self Catering	Sligachan Self Catering
2	Accommodation	Camping & Caravan	
2	Accommodation	Hostels	
2	Activities	Boat Trips	
2	Activities	Bus Tours	Bus Tours

Section	Category	Type	Name
2	Activities	Outdoor Activities	
2	Activities	Sport & Leisure	Isle of Skye Golf Club
2	Attractions	Events	
2	Attractions	Shops	
2	Attractions	Arts & Crafts	
2	Attractions	Cafés	Sconser Scallops
2	Attractions	Restaurants	
2	Attractions	Visitor Centres/Other	Isle of Raasay Distillery
2	Attractions	Other Services	Raasay Ferry
2	Guide	Walks	Loch Ainort
2	Guide	Walks	Strollamus Harbour
2	Guide	Walks	Black Cullins
2	Guide	History	Monument
2	Guide	Wildlife	
2	Guide	Activities	

Section 3

Section	Category	Type	Name
3	Accommodation	Hotel	Kings Arms Hotel
3	Accommodation	Hotel	The White Heather
3	Accommodation	Hotel	Crannog Lodge
3	Accommodation	Hotel	Hebridean Hotel
3	Accommodation	Hotel	Dunollie Hotel
3	Accommodation	Hotel	Broadford Hotel
3	Accommodation	B&B/Guest Houses	Isle of Skye Guest House
3	Accommodation	B&B/Guest Houses	Kyleackin B&B
3	Accommodation	B&B/Guest Houses	Corran B&B
3	Accommodation	B&B/Guest Houses	Cliffe House B&B
3	Accommodation	B&B/Guest Houses	Glen Arroch B&B

Section	Category	Type	Name
3	Accommodation	B&B/Guest Houses	Rainbow View B&B
3	Accommodation	B&B/Guest Houses	Blairdhu Guest House
3	Accommodation	B&B/Guest Houses	Mo'dhachaidh Guest House
3	Accommodation	B&B/Guest Houses	Almara B&B
3	Accommodation	B&B/Guest Houses	Strathgorm B&B
3	Accommodation	B&B/Guest Houses	Fernlea B&B
3	Accommodation	B&B/Guest Houses	Ardhaven B&B
3	Accommodation	B&B/Guest Houses	Shilog B&B
3	Accommodation	B&B/Guest Houses	Old Church House B&B
3	Accommodation	B&B/Guest Houses	Taigh an Uiff B&B
3	Accommodation	B&B/Guest Houses	Scorry Breac B&B
3	Accommodation	B&B/Guest Houses	Willowdale B&B
3	Accommodation	B&B/Guest Houses	Otter Lodge B&B
3	Accommodation	B&B/Guest Houses	The Sheiling B&B
3	Accommodation	B&B/Guest Houses	Caberfeidh B&B
3	Accommodation	B&B/Guest Houses	Broadford House B&B
3	Accommodation	B&B/Guest Houses	Dunedin B&B
3	Accommodation	B&B/Guest Houses	B&B By The Sea
3	Accommodation	B&B/Guest Houses	Tigh Blath B&B
3	Accommodation	Self-Catering	Maol View Apartment
3	Accommodation	Self-Catering	Crowlin Vistas (air bnb)
3	Accommodation	Self-Catering	Taigh Mairi
3	Accommodation	Self-Catering	Skye Lark Lux. Lodge
3	Accommodation	Self-Catering	Fuaran Self Catering
3	Accommodation	Self-Catering	Bruaich Mhor
3	Accommodation	Self-Catering	Katies Cabin
3	Accommodation	Self-Catering	Craft Four
3	Accommodation	Self-Catering	Shanuri

Section	Category	Type	Name
3	Accommodation	Self-Catering	Dark Skye Ultra Lux.
3	Accommodation	Self-Catering	Tigh Beag Hols Cottage
3	Accommodation	Self-Catering	Broadford Lodges
3	Accommodation	Self-Catering	The Saucy Mary Restaurant & Lodge
3	Accommodation	Camping & Caravan	Broadford Camping Skye
3	Accommodation	Hostels	Skye Backpackers
3	Accommodation	Hostels	Youth Hostel
3	Accommodation	Hostels	Broadford Backpackers
3	Accommodation	Hostels	Skye Basecamp
3	Activities	Boat Trips	
3	Activities	Bus Tours	
3	Activities	Outdoor Activities	
3	Activities	Sport & Leisure	
3	Attractions	Events	
3	Attractions	Shops	Co-op
3	Attractions	Arts & Crafts	The Misty Bottle
3	Attractions	Arts & Crafts	Skyline Studios & Pottery
3	Attractions	Arts & Crafts	Broadford Art Gallery
3	Attractions	Arts & Crafts	Love from Skye Jewellery & Gifts
3	Attractions	Arts & Crafts	Skye Market Square Shops, Gifts & Antiques
3	Attractions	Arts & Crafts	Blue Skye Gifts
3	Attractions	Arts & Crafts	Isle of Skye Candle Co.
3	Attractions	Cafés	The Nice Café & Bookshop
3	Attractions	Cafés	Harry's Coffee Shop
3	Attractions	Cafés	Lean to Coffee
3	Attractions	Cafés	The Coffee Bothy
3	Attractions	Restaurants	The Saucy Mary Restaurant & Lodge
3	Attractions	Restaurants	King Haakon Bar

Section	Category	Type	Name
3	Attractions	Restaurants	Castle Moil Restaurant & Gift Shop
3	Attractions	Restaurants	Skye Bridge Seafood
3	Attractions	Restaurants	Taste of India
3	Attractions	Restaurants	Red Skye Restaurant
3	Attractions	Restaurants	The Harbour
3	Attractions	Restaurants	Café Sia
3	Attractions	Restaurants	Claymore Restaurant
3	Attractions	Visitor Centres/Other	Bridgewater VC
3	Attractions	Visitor Centres/Other	Kyleackin Harbour
3	Attractions	Visitor Centres/Other	Scotland's Gaelic College
3	Attractions	Visitor Centres/Other	Stevenson Lighthouse
3	Attractions	Visitor Centres/Other	Torabhaig Distillery
3	Attractions	Other Services	
3	Guide	Walks	Kyle Rhea (FCS)
3	Guide	Walks	Glen, Scenic
3	Guide	Walks	Kyle Community Woodlands
3	Guide	History	War Memorial Viewpoint
3	Guide	History	Armadale Castle
3	Guide	History	Gavin Maxwell Museum
3	Guide	Wildlife	Wildlife Hide
3	Guide	Activities	

Section 4

Section	Category	Type	Name
4	Accommodation	Hotel	Kintail Lodge Hotel & Café
4	Accommodation	Hotel	Dornie
4	Accommodation	Hotel	Balmacara

Section	Category	Type	Name
4	Accommodation	Hotel	Skye Bridge
4	Accommodation	Hotel	Loch Alsh
4	Accommodation	Hotel	Kyle
4	Accommodation	Hotel	Tingle Creek
4	Accommodation	Hotel	Glenelg Inn
4	Accommodation	B&B/Guest Houses	Riverside B&B
4	Accommodation	B&B/Guest Houses	Glomach Croft B&B
4	Accommodation	B&B/Guest Houses	Ruarach Croft B&B
4	Accommodation	B&B/Guest Houses	Otterburn House B&B
4	Accommodation	B&B/Guest Houses	Sonas B&B
4	Accommodation	B&B/Guest Houses	Drumfern B&B
4	Accommodation	B&B/Guest Houses	Kinloch B&B
4	Accommodation	B&B/Guest Houses	Donan House B&B
4	Accommodation	B&B/Guest Houses	Sonas B&B
4	Accommodation	B&B/Guest Houses	Conchra Guest House
4	Accommodation	B&B/Guest Houses	Seadrift B&B
4	Accommodation	B&B/Guest Houses	Old Post Office B&B
4	Accommodation	B&B/Guest Houses	Ceol na Mara B&B
4	Accommodation	B&B/Guest Houses	Balmacara Mains Guest House
4	Accommodation	B&B/Guest Houses	Fasgath B&B
4	Accommodation	B&B/Guest Houses	The Pipers Lodge B&B
4	Accommodation	B&B/Guest Houses	Wemyss Place B&B
4	Accommodation	B&B/Guest Houses	Ratagan B&B
4	Accommodation	Self-Catering	Eilean Donan Apartments
4	Accommodation	Self-Catering	Shepherds Hut
4	Accommodation	Self-Catering	Lamont Chalets
4	Accommodation	Camping & Caravan	Moyle Campsite
4	Accommodation	Camping & Caravan	Glenshiel Campsite

Section	Category	Type	Name
4	Accommodation	Camping & Caravan	Kintail Camping & Caravan
4	Accommodation	Camping & Caravan	Ardelv Caravan Park & B&B
4	Accommodation	Camping & Caravan	Auctertyre Farm Motorhome
4	Accommodation	Camping & Caravan	Reraig Caravan Park
4	Accommodation	Hostels	The Islander Bunkhouse
4	Activities	Boat Trips	
4	Activities	Bus Tours	
4	Activities	Outdoor Activities	Glenshiel Pony Trekking
4	Activities	Sport & Leisure	Swimming Pool
4	Attractions	Events	
4	Attractions	Shops	Glenelg Shop
4	Attractions	Arts & Crafts	Antiques & Brick a Brac
4	Attractions	Arts & Crafts	Kintail Craft
4	Attractions	Arts & Crafts	Skye Bridge Studios
4	Attractions	Arts & Crafts	Ferry Shore Station Shop & Gifts
4	Attractions	Arts & Crafts	Highland Kilt Cushions Sewing Workshop
4	Attractions	Cafés	Heilan Takeaway
4	Attractions	Cafés	Coffee & Bakeshop
4	Attractions	Cafés	Hectors Bothy
4	Attractions	Cafés	Sheena's Tea Hut
4	Attractions	Restaurants	Waterside Restaurant
4	Attractions	Restaurants	Fishermans Kitchen
4	Attractions	Visitor Centres/Other	Chocolates of Glenshiel
4	Attractions	Visitor Centres/Other	Kintail Countryside Centre
4	Attractions	Visitor Centres/Other	Carr Brae Viewpoint
4	Attractions	Visitor Centres/Other	Eilean Donan Castle & Visitor Centre

Section	Category	Type	Name
4	Attractions	Visitor Centres/Other	Loch Alsh Viewpoint
4	Attractions	Visitor Centres/Other	Micro Brewing Gin & Whiskey
4	Attractions	Visitor Centres/Other	Glenelg Brochs
4	Attractions	Other Services	Kyle Rhea Ferry to Glenelg
4	Attractions	Other Services	Bike Hire & Repair
4	Guide	Walks	Five Sisters
4	Guide	Walks	Lochalsh Woodland Walks
4	Guide	Walks	Glenelg Village Walk
4	Guide	Walks	Mam Ratagan (FCS)
4	Guide	History	Railway Museum
4	Guide	History	Murchiston Monument
4	Guide	History	Balmacara Estate (NTS)
4	Guide	Wildlife	Feral Goats
4	Guide	Activities	Kintail Outdoor Centre
4	Guide	Activities	Adventure Centre Sky Highland

Section 5

Section	Category	Type	Name
5	Accommodation	Hotel	Clunanie Inn Hotel
5	Accommodation	B&B/Guest Houses	Ardgarry Farm B&B
5	Accommodation	B&B/Guest Houses	Lochournhead B&B
5	Accommodation	Self-Catering	Caledonian Cabin
5	Accommodation	Camping & Caravan	Faichemard Farm Campsite (adults only)
5	Accommodation	Hostels	
5	Activities	Boat Trips	
5	Activities	Bus Tours	
5	Activities	Outdoor Activities	
5	Activities	Sport & Leisure	

Section	Category	Type	Name
5	Attractions	Events	
5	Attractions	Shops	
5	Attractions	Arts & Crafts	
5	Attractions	Cafés	Landouir Bakehouse
5	Attractions	Restaurants	
5	Attractions	Visitor Centres/Other	Glen Garry Viewpoint
5	Attractions	Other Services	
5	Guide	Walks	Ardochy Forest
5	Guide	Walks	Glen Shiel
5	Guide	History	
5	Guide	Wildlife	
5	Guide	Activities	

Section 6

Section	Category	Type	Name
6	Accommodation	Hotel	The Inch
6	Accommodation	Hotel	Morag's Lodge
6	Accommodation	Hotel	Richmond House
6	Accommodation	Hotel	The Lovat
6	Accommodation	Hotel	Caledonian
6	Accommodation	Hotel	Invergarry Hotel
6	Accommodation	Hotel	Rockerby Manor Hotel
6	Accommodation	B&B/Guest Houses	Thistle Dubh
6	Accommodation	B&B/Guest Houses	Apple B&B
6	Accommodation	B&B/Guest Houses	Abbey Cottage B&B
6	Accommodation	B&B/Guest Houses	Kings Inn B&B
6	Accommodation	B&B/Guest Houses	Lorien House B&B
6	Accommodation	B&B/Guest Houses	Bank House B&B
6	Accommodation	B&B/Guest Houses	Whitehouse B&B

Section	Category	Type	Name
6	Accommodation	B&B/Guest Houses	Loch Ness Guest House
6	Accommodation	B&B/Guest Houses	Suardal B&B
6	Accommodation	B&B/Guest Houses	Kettle House B&B
6	Accommodation	B&B/Guest Houses	Lundie B&B
6	Accommodation	B&B/Guest Houses	Nursery B&B
6	Accommodation	Self-Catering	Wildwood Lodge
6	Accommodation	Self-Catering	Loch Ness Highland Resort Lodge
6	Accommodation	Self-Catering	Sanctuary Loch Ness Lodge
6	Accommodation	Self-Catering	The Highland Club
6	Accommodation	Self-Catering	Loch Ness Lodge Retreat Lodge
6	Accommodation	Camping & Caravan	
6	Accommodation	Hostels	
6	Activities	Boat Trips	Canal Boats
6	Activities	Boat Trips	Caledonian Canal
6	Activities	Boat Trips	Cruise Loch Ness
6	Activities	Bus Tours	Bus Tours
6	Activities	Outdoor Activities	Jenkins Park
6	Activities	Sport & Leisure	Fort Augustus Golf Club
6	Activities	Sport & Leisure	Shinty Club
6	Attractions	Events	
6	Attractions	Shops	The Millshop
6	Attractions	Shops	Kiltane of Scotland
6	Attractions	Shops	That Cute Little Highland Shop
6	Attractions	Arts & Crafts	Fort Augustus Gift Co.
6	Attractions	Arts & Crafts	Leisure House
6	Attractions	Arts & Crafts	Glen Albyn Gifts & Collectables
6	Attractions	Arts & Crafts	Iceberg Glass Blowing
6	Attractions	Arts & Crafts	Angelas Gift Shop

Section	Category	Type	Name
6	Attractions	Cafés	Loch Nessie Shop
6	Attractions	Cafés	The Moorings
6	Attractions	Cafés	Cobbs Café
6	Attractions	Cafés	The Legion
6	Attractions	Cafés	Beaufort House Café
6	Attractions	Cafés	Jaggy Thistle Café & Gifts
6	Attractions	Restaurants	Fish & Chips Co.
6	Attractions	Restaurants	The Bothy
6	Attractions	Restaurants	The Loch Inn
6	Attractions	Restaurants	The Boathouse
6	Attractions	Restaurants	Richmond House Hotel & Restaurant
6	Attractions	Restaurants	Cannelside Takeaway
6	Attractions	Visitor Centres/Other	Caledonian Canal Centre
6	Attractions	Visitor Centres/Other	The Clansman Centre
6	Attractions	Visitor Centres/Other	Bridge of Oich
6	Attractions	Visitor Centres/Other	Invergarry Heritage Centre & Café
6	Attractions	Other Services	Bike Hire
6	Guide	Walks	River Oich Walk (FCS)
6	Guide	Walks	Torr Dhuin Walk (FCS)
6	Guide	Walks	Glen Garry Walk
6	Guide	Walks	3 Glens Resilience Group: Great Glen, Glen Garry & Glen Moriston
6	Guide	History	
6	Guide	Wildlife	
6	Guide	Activities	Golf