

- Legend:**
- Existing Steel Lattice Tower to be Retained
 - Proposed Steel Lattice Tower
 - Proposed OHL Alignment
 - - - Alternative OHL Alignment
 - Existing 132 kV OHL to be dismantled (Steel Lattice)
 - EPZ Access Track
 - Existing Access Track
 - Existing Access Track to be upgraded
 - New Permanent Access Track (construction type to be determined)
 - New Permanent Access Track (Cut / Fill Construction)
 - New Permanent Access Track (Floating Construction)
 - New Temporary Access Track
 - New Temporary Spur to Towers
 - - - Section Divide
 - Limit of Deviation
 - - - Limit of Deviation (Access)
- Special Area of Conservation (SAC)**
Source: NatureScot
- Kinloch and Kyleakin Hills
 - Ancient Woodland
- Carbon & Peatland Importance**
Source: ASH, MacArthur Green
- Class 1
 - Class 2



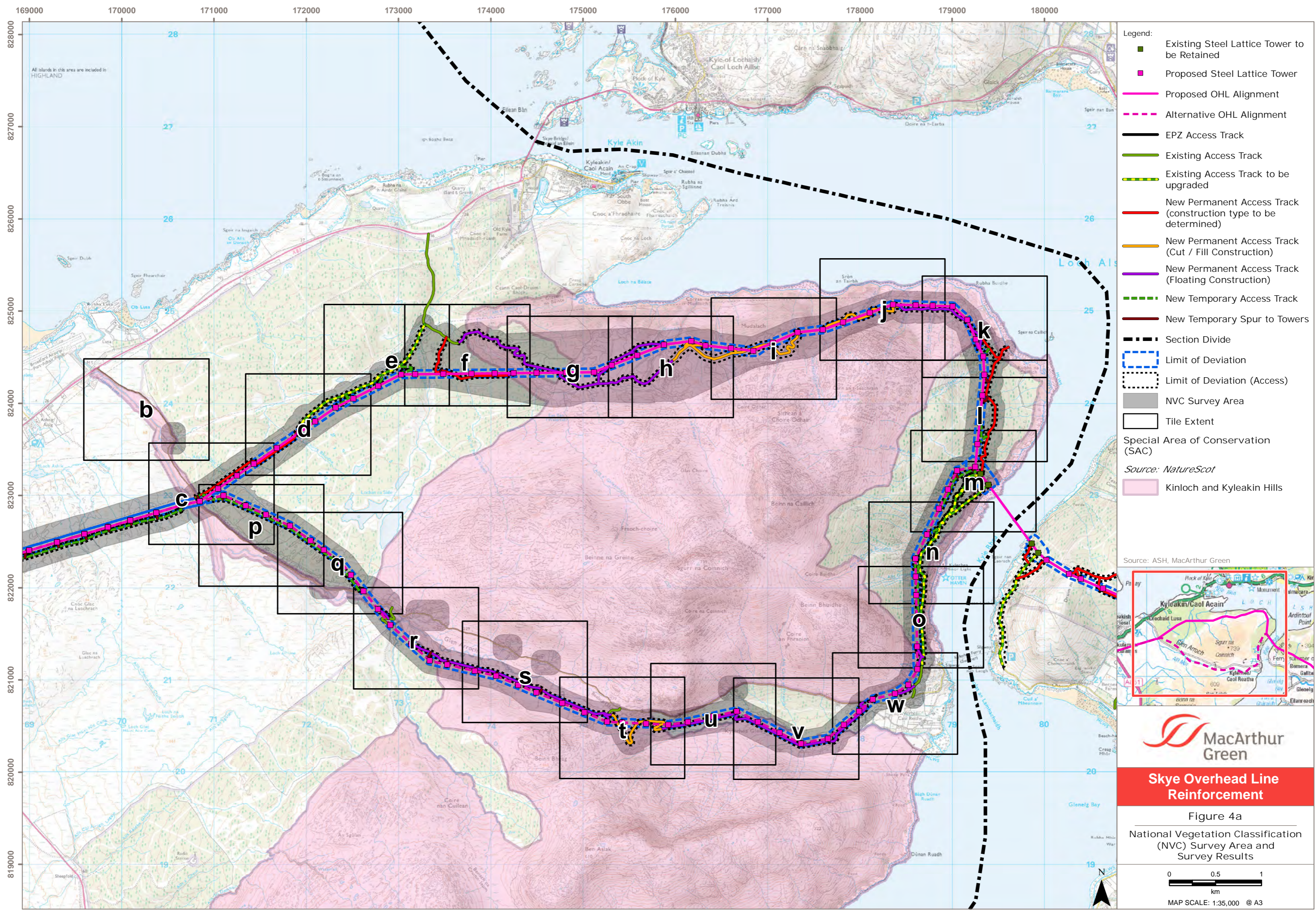
MacArthur Green

Skye Overhead Line Reinforcement

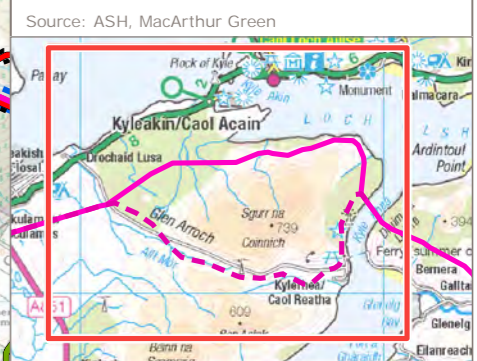
Figure 2

Carbon & Peatland Map and Ancient Woodland

0 0.5 1
km
MAP SCALE: 1:30,000 @ A3



- Legend:
- Existing Steel Lattice Tower to be Retained
 - Proposed Steel Lattice Tower
 - Proposed OHL Alignment
 - - - Alternative OHL Alignment
 - EPZ Access Track
 - Existing Access Track
 - Existing Access Track to be upgraded
 - New Permanent Access Track (construction type to be determined)
 - New Permanent Access Track (Cut / Fill Construction)
 - New Permanent Access Track (Floating Construction)
 - New Temporary Access Track
 - New Temporary Spur to Towers
 - - - Section Divide
 - Limit of Deviation
 - Limit of Deviation (Access)
 - NVC Survey Area
 - Tile Extent
- Special Area of Conservation (SAC)
- Source: NatureScot
- Kinloch and Kyleakin Hills



MacArthur Green

Skye Overhead Line Reinforcement

Figure 4a

National Vegetation Classification (NVC) Survey Area and Survey Results

0 0.5 1
km

MAP SCALE: 1:35,000 @ A3

Document Path: S:\Projects\ASH\Skye OHL Reinforcement_NVC_Sc_HRA_Fig4_NVC_Sec3_Overview_SKYE.mxd Map Author: LM Checked: LNF Approved: BH Status: Rev6

170000

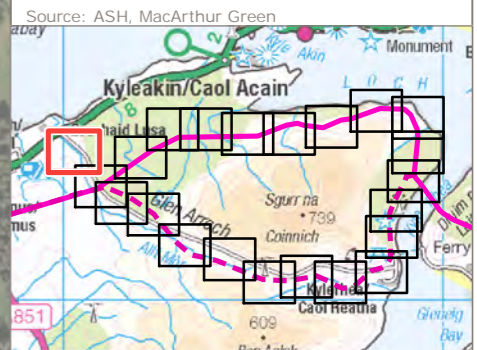
170500

824000

823500

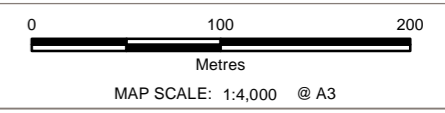


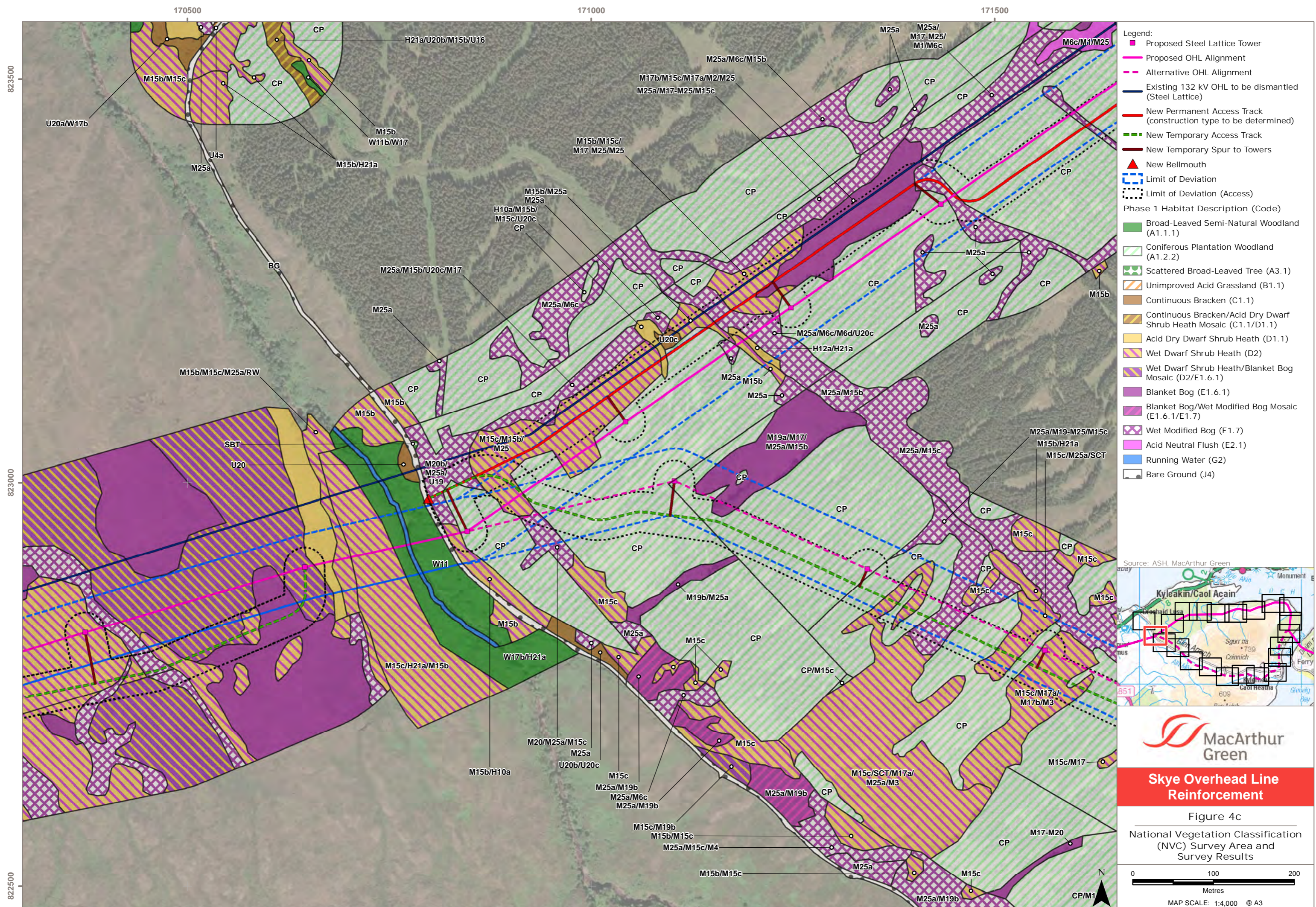
- Legend:
Phase 1 Habitat Description (Code)
- Broad-Leaved Semi-Natural Woodland (A1.1.1)
 - Coniferous Plantation Woodland (A1.2.2)
 - Unimproved Acid Grassland (B1.1)
 - Continuous Bracken (C1.1)
 - Continuous Bracken/Acid Dry Dwarf Shrub Heath Mosaic (C1.1/D1.1)
 - Continuous Bracken/Wet Modified Bog Mosaic (C1.1/E1.7)
 - Acid Dry Dwarf Shrub Heath (D1.1)
 - Wet Dwarf Shrub Heath (D2)
 - Wet Dwarf Shrub Heath/Wet Modified Bog Mosaic (D2/E1.7)
 - Blanket Bog (E1.6.1)
 - Wet Modified Bog (E1.7)
 - Running Water (G2)
 - Bare Ground (J4)



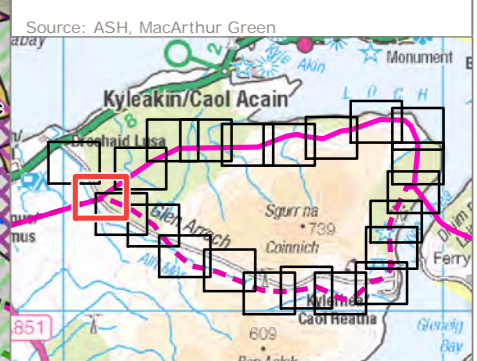
Skye Overhead Line Reinforcement

Figure 4b
National Vegetation Classification (NVC) Survey Area and Survey Results





- Legend:**
- Proposed Steel Lattice Tower
 - Proposed OHL Alignment
 - Alternative OHL Alignment
 - Existing 132 kV OHL to be dismantled (Steel Lattice)
 - New Permanent Access Track (construction type to be determined)
 - New Temporary Access Track
 - New Temporary Spur to Towers
 - New Bellmouth
 - Limit of Deviation
 - Limit of Deviation (Access)
- Phase 1 Habitat Description (Code)**
- Broad-Leaved Semi-Natural Woodland (A1.1.1)
 - Coniferous Plantation Woodland (A1.2.2)
 - Scattered Broad-Leaved Tree (A3.1)
 - Unimproved Acid Grassland (B1.1)
 - Continuous Bracken (C1.1)
 - Continuous Bracken/Acid Dry Dwarf Shrub Heath Mosaic (C1.1/D1.1)
 - Acid Dry Dwarf Shrub Heath (D1.1)
 - Wet Dwarf Shrub Heath (D2)
 - Wet Dwarf Shrub Heath/Blanket Bog Mosaic (D2/E1.6.1)
 - Blanket Bog (E1.6.1)
 - Blanket Bog/Wet Modified Bog Mosaic (E1.6.1/E1.7)
 - Wet Modified Bog (E1.7)
 - Acid Neutral Flush (E2.1)
 - Running Water (G2)
 - Bare Ground (J4)



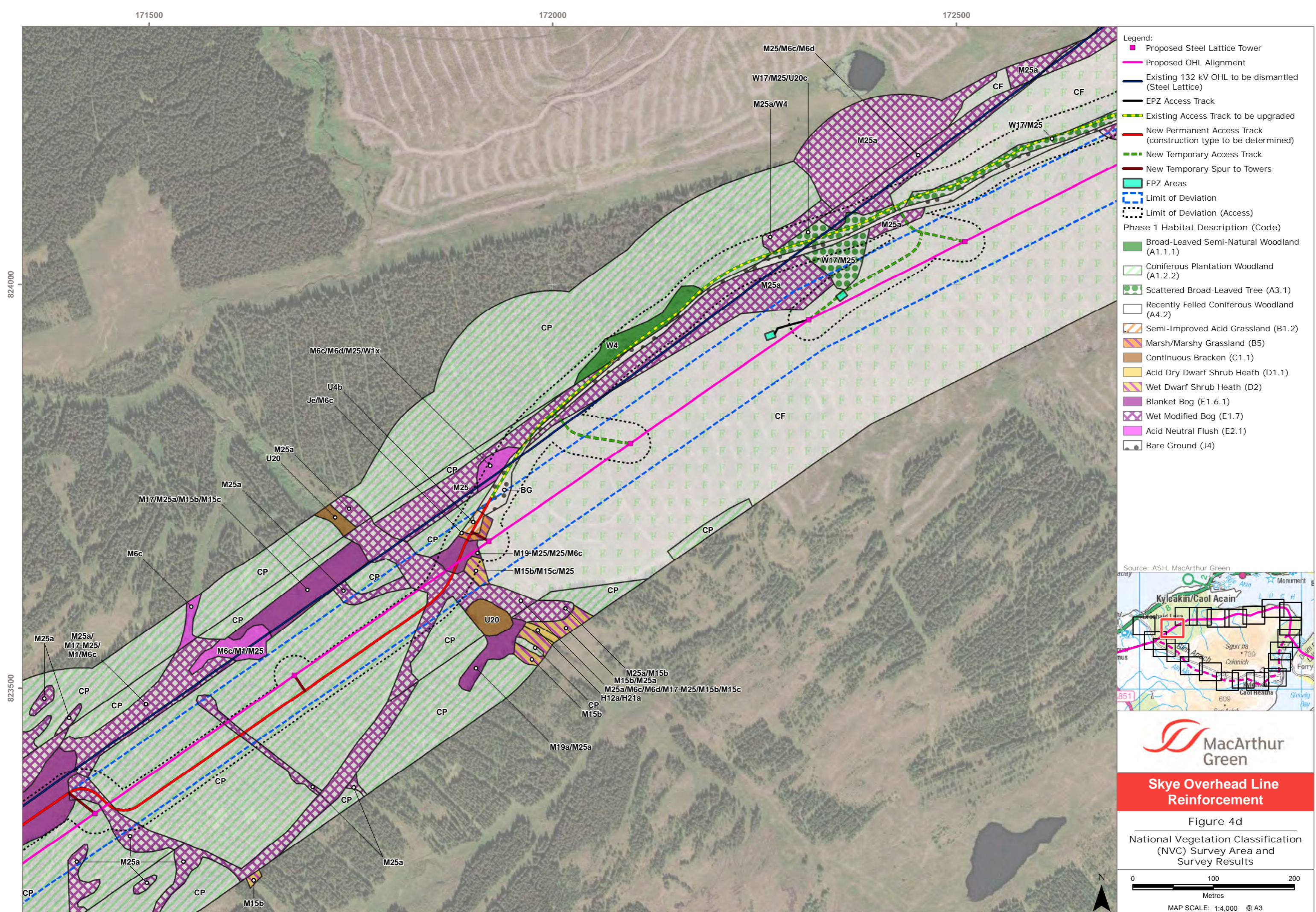
MacArthur Green

Skye Overhead Line Reinforcement

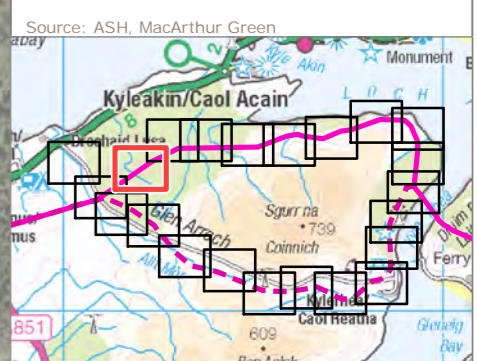
Figure 4c
National Vegetation Classification (NVC) Survey Area and Survey Results

0 100 200
Metres
MAP SCALE: 1:4,000 @ A3

Map Author: LNF Checked: LNF Approved: BH Status: Rev6
 Document Path: S:\Projects\ASH\Skye OHL Reinforcement_NVC_Data\E_NVC_HRA_Fig4_NVC_Skye.mxd



- Legend:
- Proposed Steel Lattice Tower
 - Proposed OHL Alignment
 - Existing 132 kV OHL to be dismantled (Steel Lattice)
 - EPZ Access Track
 - Existing Access Track to be upgraded
 - New Permanent Access Track (construction type to be determined)
 - New Temporary Access Track
 - New Temporary Spur to Towers
 - EPZ Areas
 - Limit of Deviation
 - Limit of Deviation (Access)
- Phase 1 Habitat Description (Code)
- Broad-Leaved Semi-Natural Woodland (A1.1.1)
 - Coniferous Plantation Woodland (A1.2.2)
 - Scattered Broad-Leaved Tree (A3.1)
 - Recently Felled Coniferous Woodland (A4.2)
 - Semi-Improved Acid Grassland (B1.2)
 - Marsh/Marshy Grassland (B5)
 - Continuous Bracken (C1.1)
 - Acid Dry Dwarf Shrub Heath (D1.1)
 - Wet Dwarf Shrub Heath (D2)
 - Blanket Bog (E1.6.1)
 - Wet Modified Bog (E1.7)
 - Acid Neutral Flush (E2.1)
 - Bare Ground (J4)



MacArthur Green

Skye Overhead Line Reinforcement

Figure 4d

National Vegetation Classification (NVC) Survey Area and Survey Results

MAP SCALE: 1:4,000 @ A3

Map Author: LNF Checked: LNF Approved: BH Status: Rev6
 Document Path: S:\Projects\ASH\Skye OHL Reinforcement_SKY03_Data\E_NSc_HRA_Fig4_NVC_Sec3_SKYE.mxd

172500

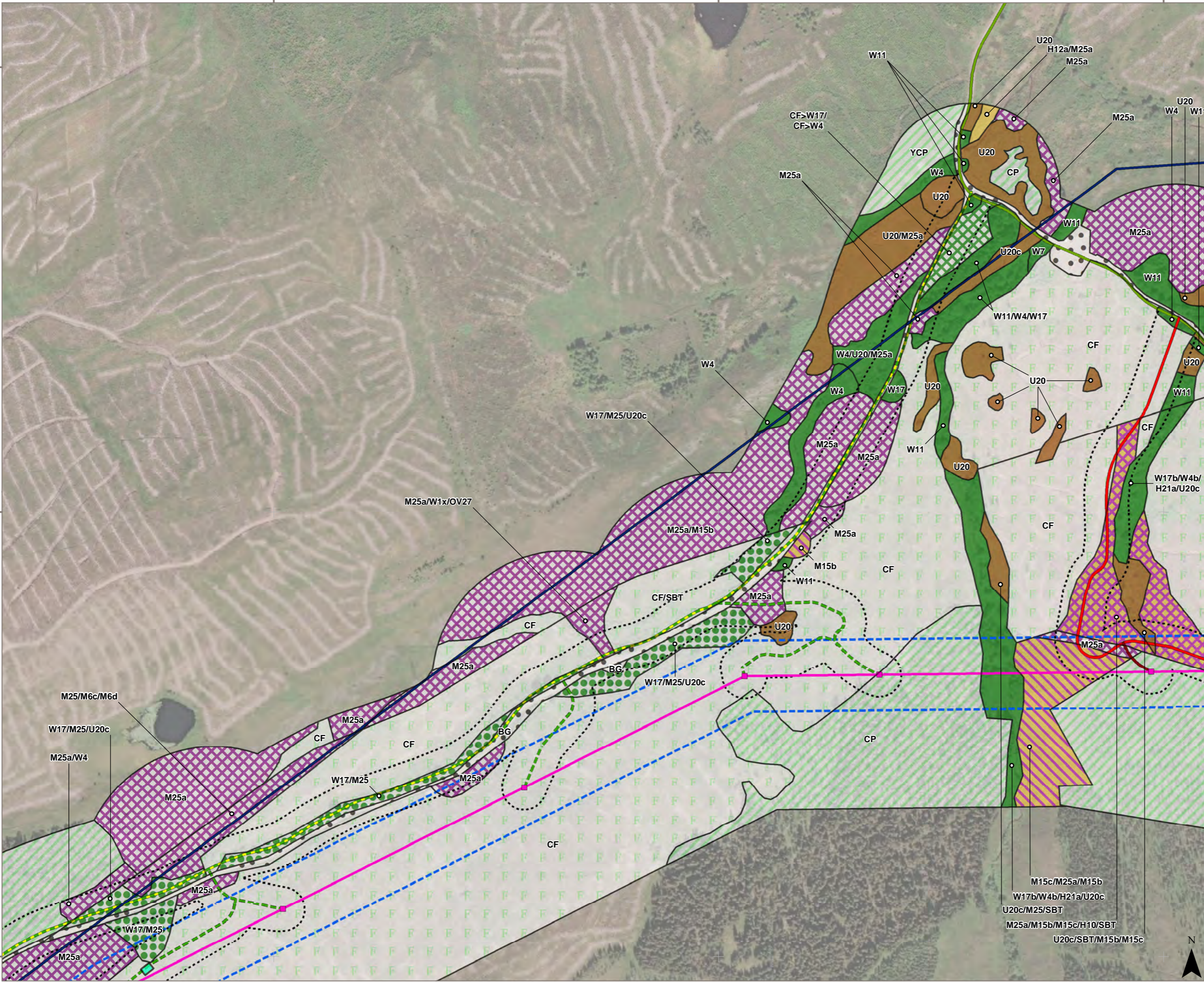
173000

173500

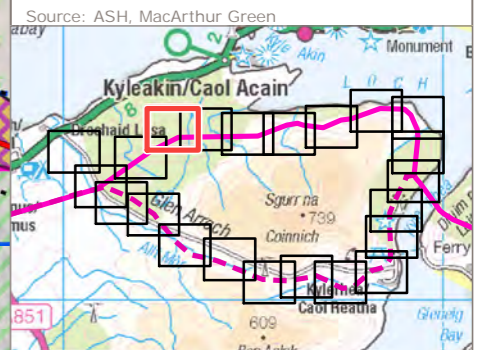
825000

824500

824000



- Legend:
- Proposed Steel Lattice Tower
 - Proposed OHL Alignment
 - Existing 132 kV OHL to be dismantled (Steel Lattice)
 - Existing Access Track
 - Existing Access Track to be upgraded
 - New Permanent Access Track (construction type to be determined)
 - New Temporary Access Track
 - New Temporary Spur to Towers
 - EPZ Areas
 - Limit of Deviation
 - Limit of Deviation (Access)
 - Phase 1 Habitat Description (Code)
 - Broad-Leaved Semi-Natural Woodland (A1.1.1)
 - Coniferous Plantation Woodland (A1.2.2)
 - Dense/Continuous Scrub (A2.1)
 - Scattered Broad-Leaved Tree (A3.1)
 - Recently Felled Coniferous Woodland (A4.2)
 - Continuous Bracken (C1.1)
 - Acid Dry Dwarf Shrub Heath (D1.1)
 - Wet Dwarf Shrub Heath (D2)
 - Wet Dwarf Shrub Heath/Wet Modified Bog Mosaic (D2/E1.7)
 - Wet Modified Bog (E1.7)
 - Bare Ground (J4)



Source: ASH, MacArthur Green

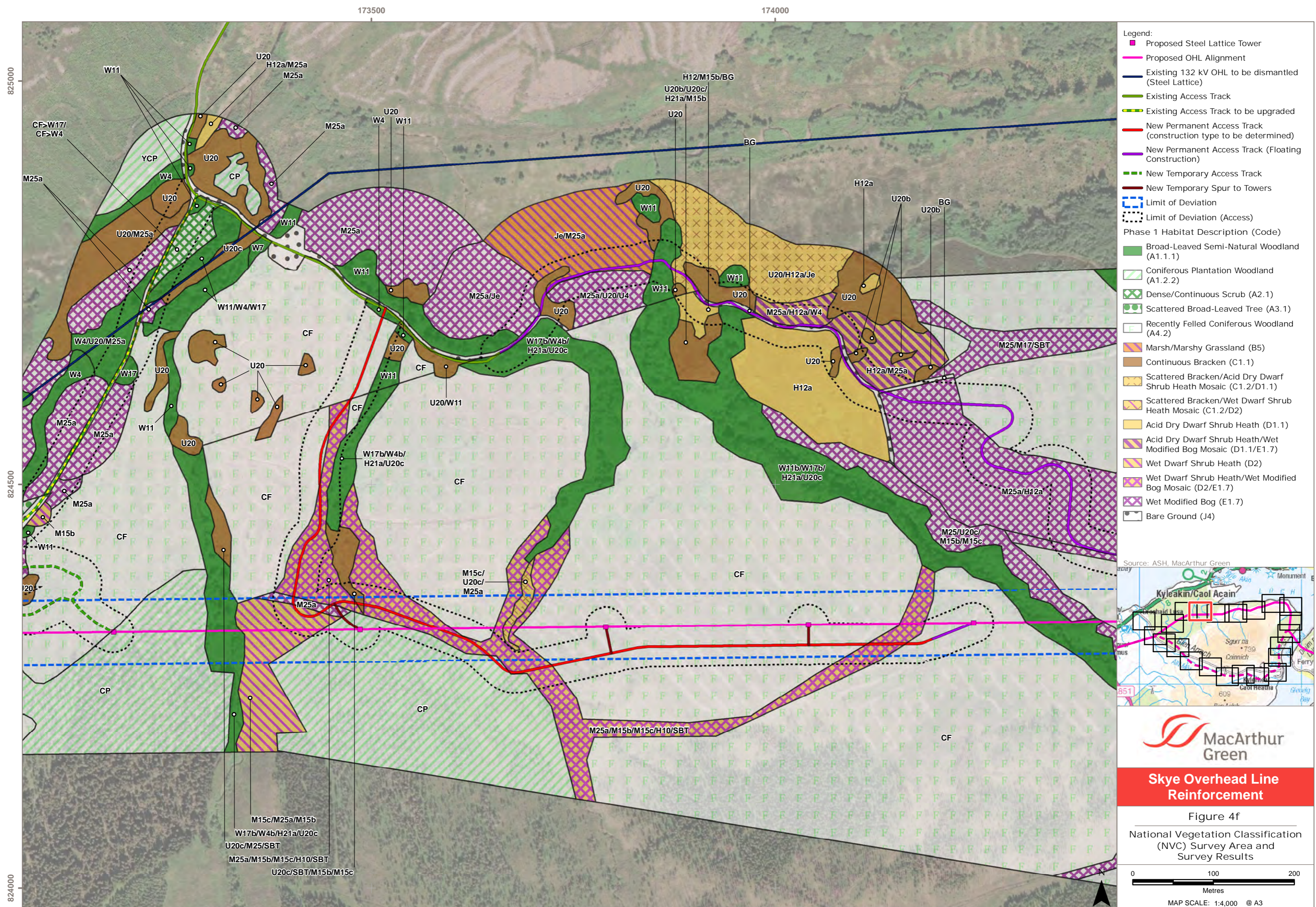
MacArthur Green

Skye Overhead Line Reinforcement

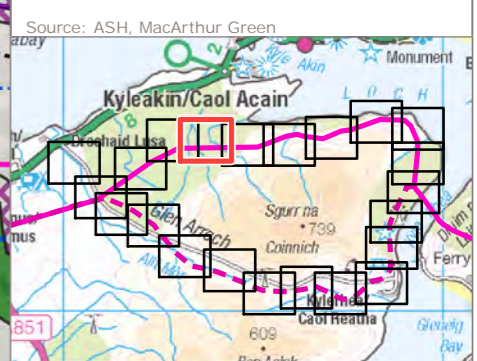
Figure 4e

National Vegetation Classification (NVC) Survey Area and Survey Results

MAP SCALE: 1:4,000 @ A3

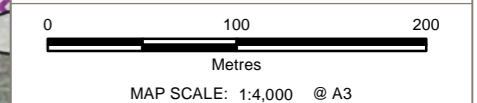


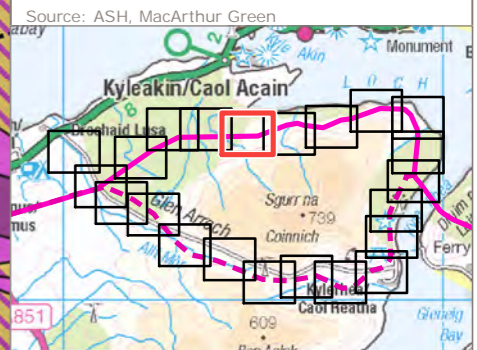
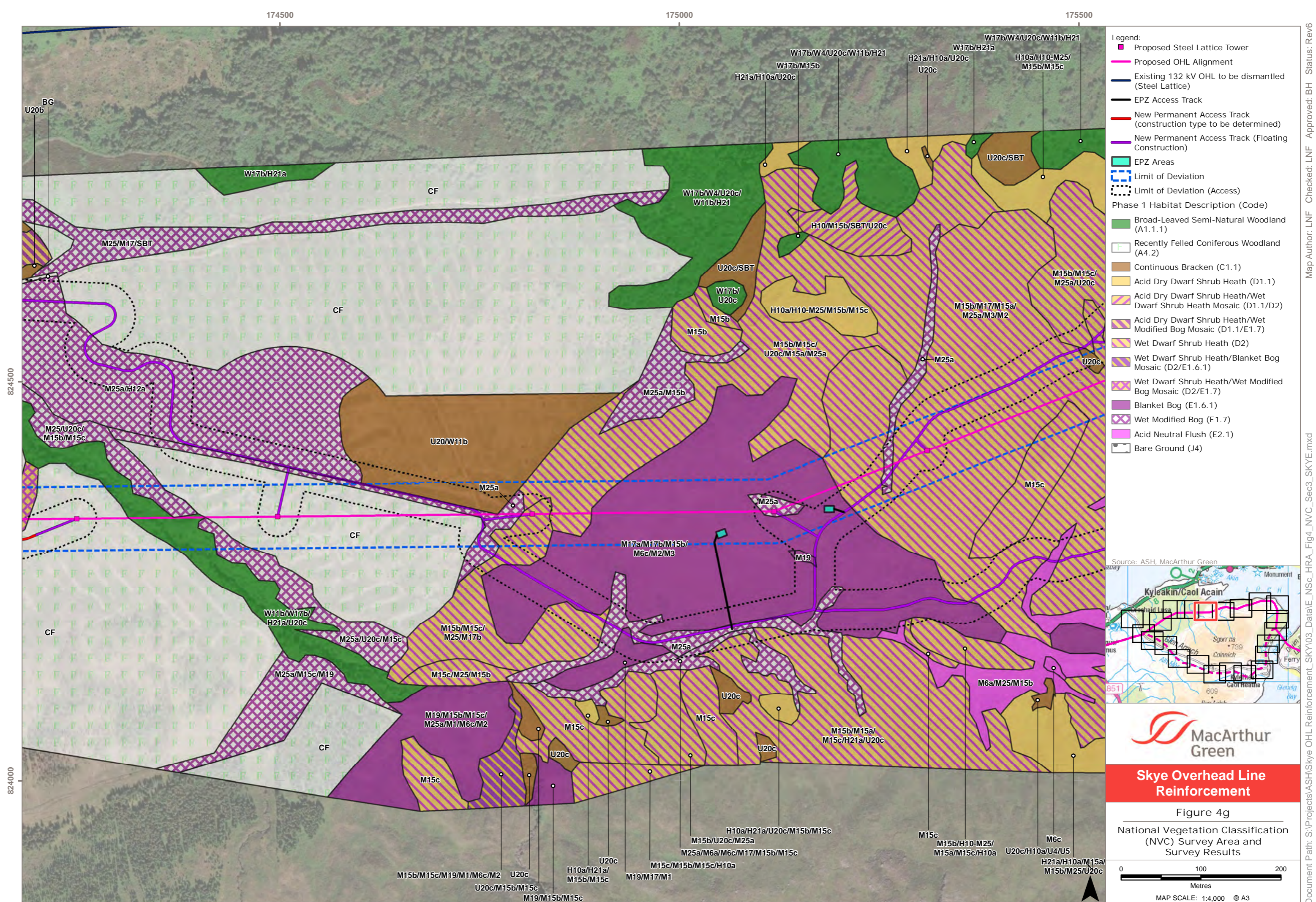
- Legend:**
- Proposed Steel Lattice Tower
 - Proposed OHL Alignment
 - Existing 132 kV OHL to be dismantled (Steel Lattice)
 - Existing Access Track
 - Existing Access Track to be upgraded
 - New Permanent Access Track (construction type to be determined)
 - New Permanent Access Track (Floating Construction)
 - New Temporary Access Track
 - New Temporary Spur to Towers
 - Limit of Deviation
 - Limit of Deviation (Access)
- Phase 1 Habitat Description (Code)**
- Broad-Leaved Semi-Natural Woodland (A1.1.1)
 - Coniferous Plantation Woodland (A1.2.2)
 - Dense/Continuous Scrub (A2.1)
 - Scattered Broad-Leaved Tree (A3.1)
 - Recently Felled Coniferous Woodland (A4.2)
 - Marsh/Marshy Grassland (B5)
 - Continuous Bracken (C1.1)
 - Scattered Bracken/Acid Dry Dwarf Shrub Heath Mosaic (C1.2/D1.1)
 - Scattered Bracken/Wet Dwarf Shrub Heath Mosaic (C1.2/D2)
 - Acid Dry Dwarf Shrub Heath (D1.1)
 - Acid Dry Dwarf Shrub Heath/Wet Modified Bog Mosaic (D1.1/E1.7)
 - Wet Dwarf Shrub Heath (D2)
 - Wet Dwarf Shrub Heath/Wet Modified Bog Mosaic (D2/E1.7)
 - Wet Modified Bog (E1.7)
 - Bare Ground (J4)



Skye Overhead Line Reinforcement

Figure 4f
National Vegetation Classification (NVC) Survey Area and Survey Results



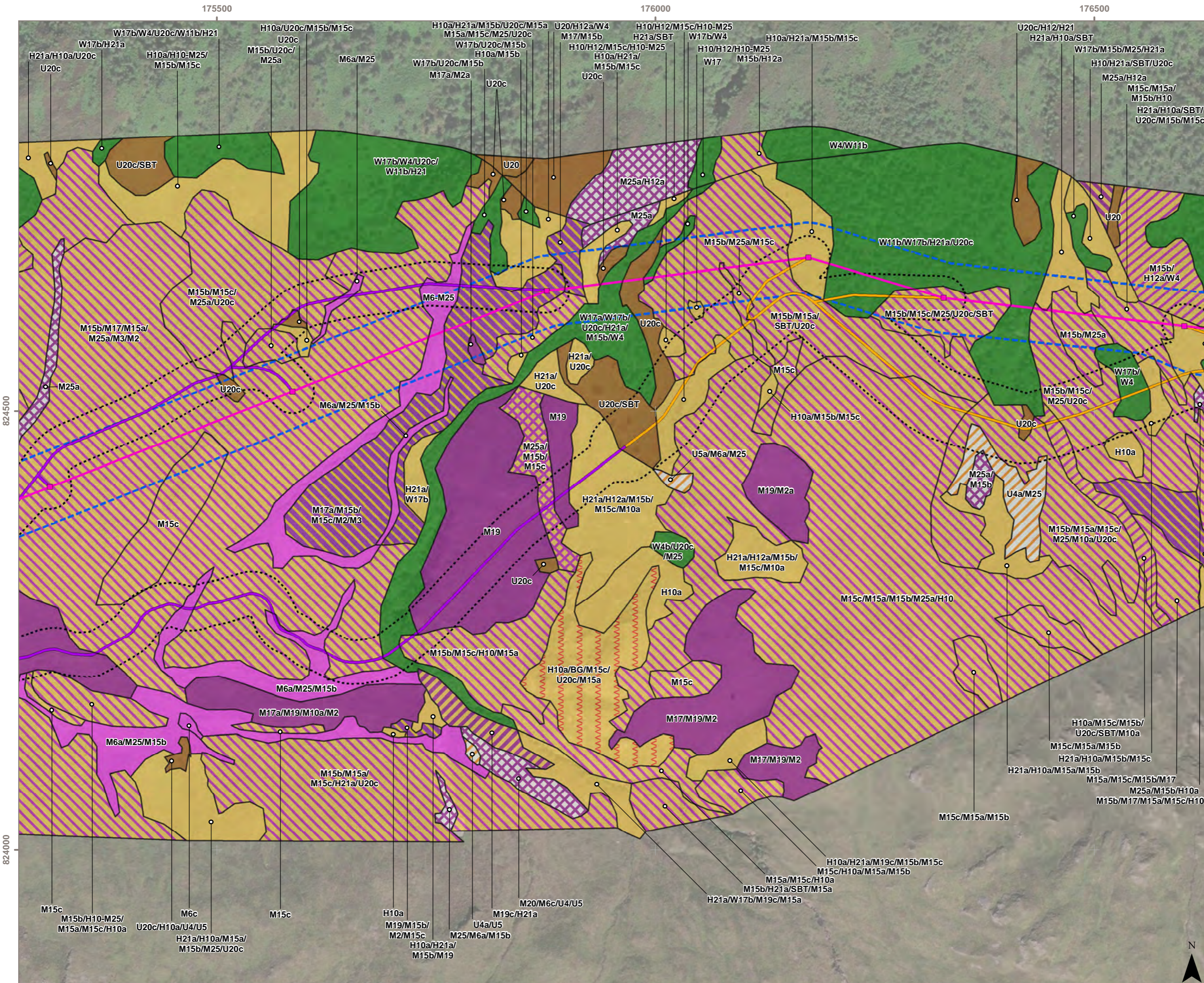


Skye Overhead Line Reinforcement

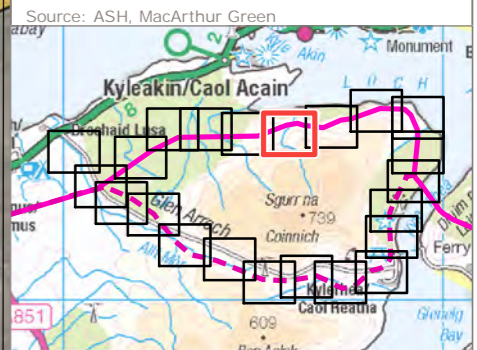
Figure 4g
National Vegetation Classification (NVC) Survey Area and Survey Results

0 100 200
Metres
MAP SCALE: 1:4,000 @ A3

Map Author: LNF Checked: LNF Approved: BH Status: Rev6
 Document Path: S:\Projects\ASH\Skye OHL Reinforcement_SKY03_Data\E_NSc_HRA_Fig4_NVC_Sec3_SKYE.mxd



- Legend:**
- Proposed Steel Lattice Tower
 - Proposed OHL Alignment
 - New Permanent Access Track (Cut / Fill Construction)
 - New Permanent Access Track (Floating Construction)
 - Limit of Deviation
 - Limit of Deviation (Access)
- Phase 1 Habitat Description (Code)**
- Broad-Leaved Semi-Natural Woodland (A1.1.1)
 - Unimproved Acid Grassland (B1.1)
 - Continuous Bracken (C1.1)
 - Acid Dry Dwarf Shrub Heath (D1.1)
 - Acid Dry Dwarf Shrub Heath/Wet Dwarf Shrub Heath Mosaic (D1.1/D2)
 - Acid Dry Dwarf Shrub Heath /Blanket Bog Mosaic (D1.1/E1.6.1)
 - Acid Dry Dwarf Shrub Heath/Wet Modified Bog Mosaic (D1.1/E1.7)
 - Acid Dry Dwarf Shrub Heath/Natural Acid/Neutral Inland Cliff Mosaic (D1.1/I1.1.1)
 - Wet Dwarf Shrub Heath (D2)
 - Wet Dwarf Shrub Heath/Blanket Bog Mosaic (D2/E1.6.1)
 - Wet Dwarf Shrub Heath/Wet Modified Bog Mosaic (D2/E1.7)
 - Blanket Bog (E1.6.1)
 - Wet Modified Bog (E1.7)
 - Acid Neutral Flush (E2.1)
 - Basic Flush (E2.2)



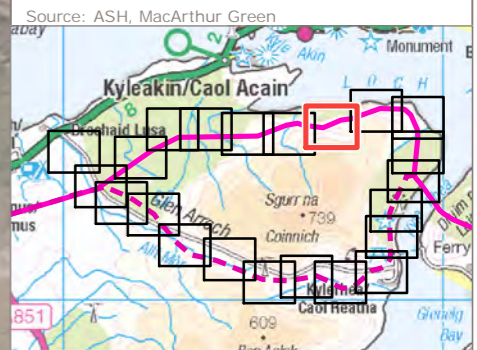
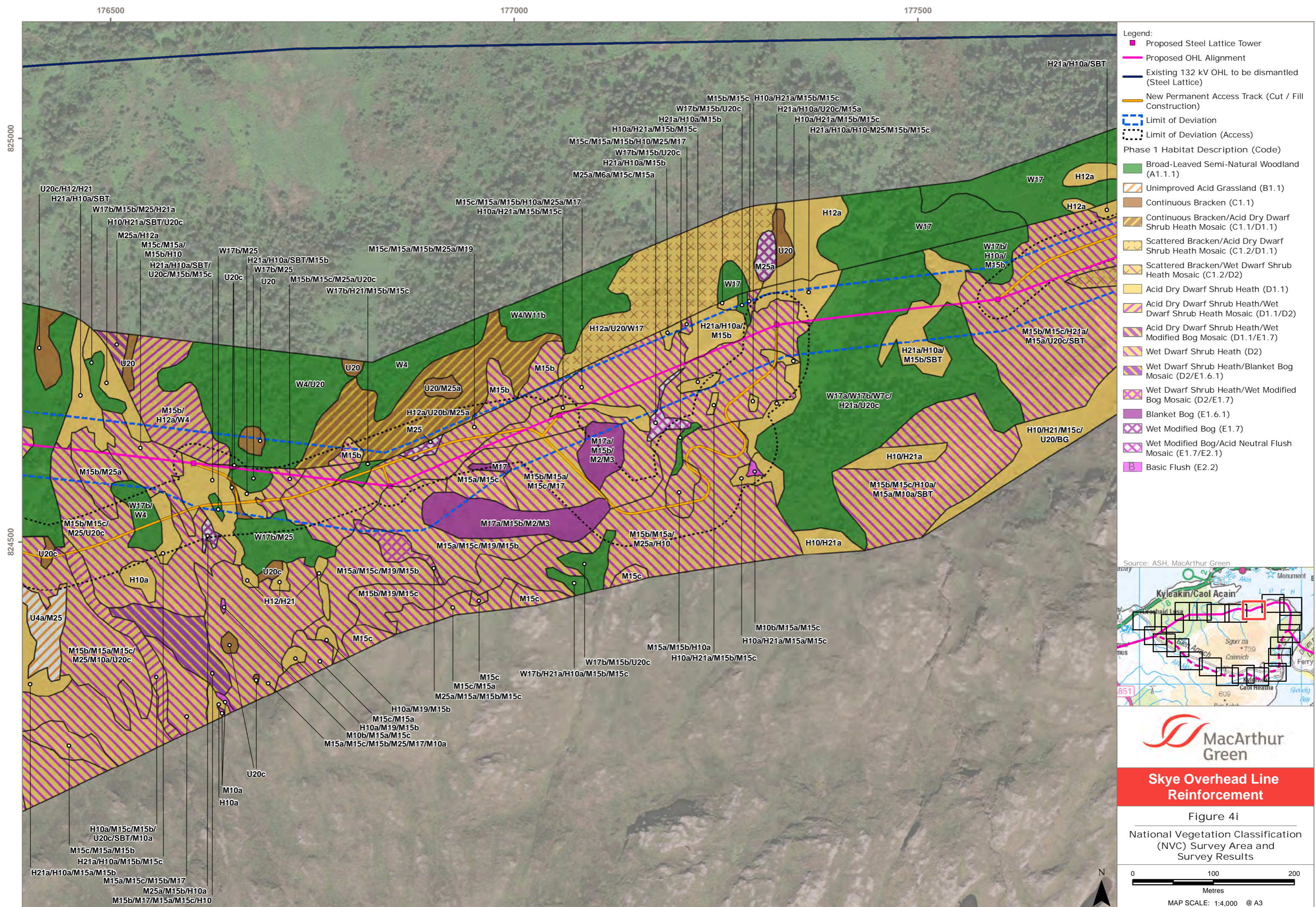
Source: ASH, MacArthur Green

Skye Overhead Line Reinforcement

Figure 4h

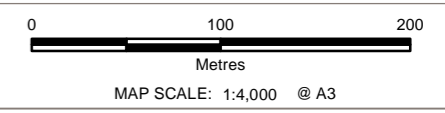
National Vegetation Classification (NVC) Survey Area and Survey Results

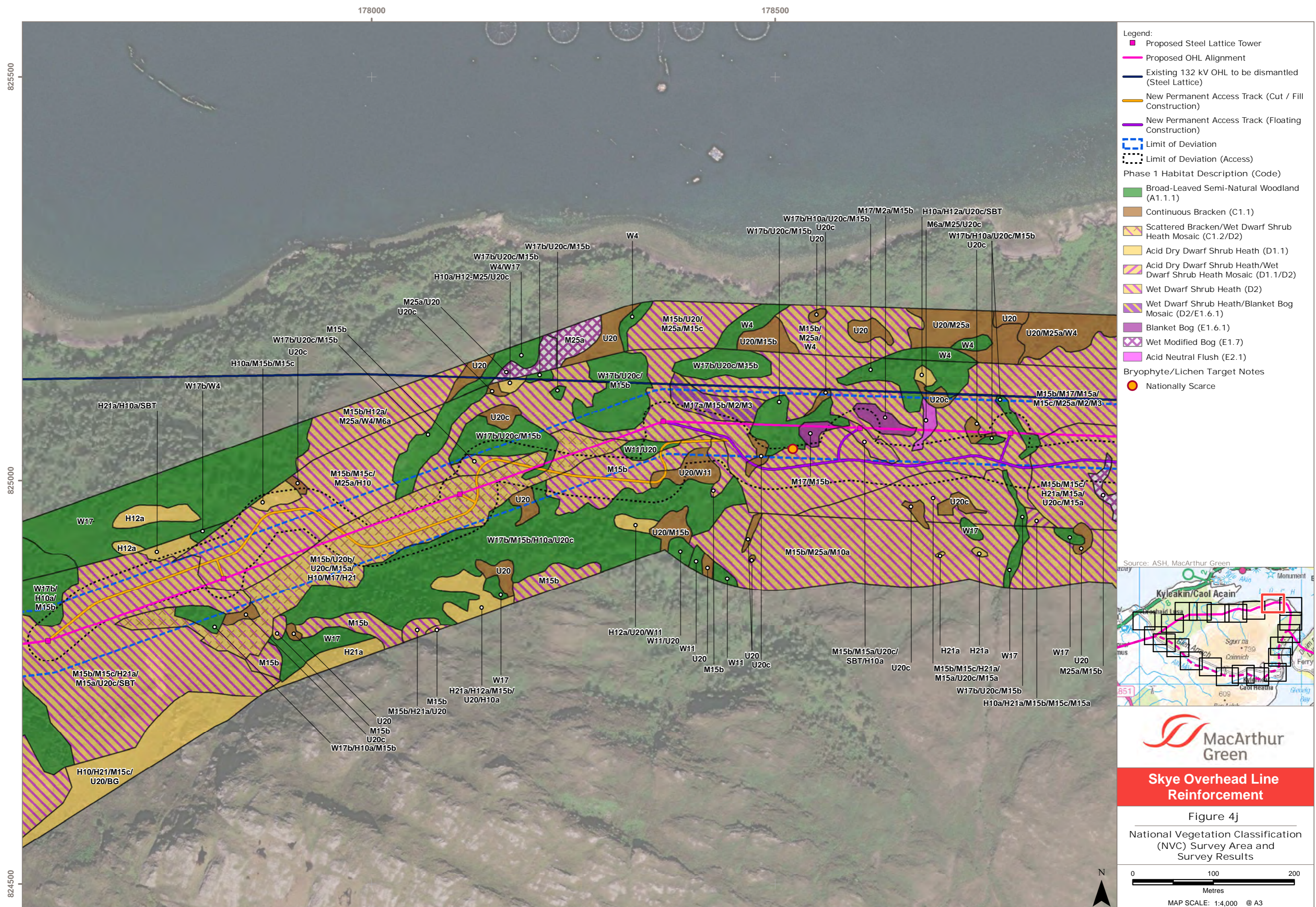
MAP SCALE: 1:4,000 @ A3



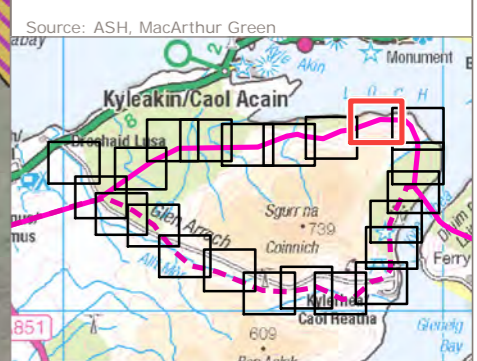
Skye Overhead Line Reinforcement

Figure 4i
National Vegetation Classification (NVC) Survey Area and Survey Results





- Legend:**
- Proposed Steel Lattice Tower
 - Proposed OHL Alignment
 - Existing 132 kV OHL to be dismantled (Steel Lattice)
 - New Permanent Access Track (Cut / Fill Construction)
 - New Permanent Access Track (Floating Construction)
 - Limit of Deviation
 - Limit of Deviation (Access)
- Phase 1 Habitat Description (Code)**
- Broad-Leaved Semi-Natural Woodland (A1.1.1)
 - Continuous Bracken (C1.1)
 - Scattered Bracken/Wet Dwarf Shrub Heath Mosaic (C1.2/D2)
 - Acid Dry Dwarf Shrub Heath (D1.1)
 - Acid Dry Dwarf Shrub Heath/Wet Dwarf Shrub Heath Mosaic (D1.1/D2)
 - Wet Dwarf Shrub Heath (D2)
 - Wet Dwarf Shrub Heath/Blanket Bog Mosaic (D2/E1.6.1)
 - Blanket Bog (E1.6.1)
 - Wet Modified Bog (E1.7)
 - Acid Neutral Flush (E2.1)
- Bryophyte/Lichen Target Notes**
- Nationally Scarce



MacArthur Green

Skye Overhead Line Reinforcement

Figure 4j

National Vegetation Classification (NVC) Survey Area and Survey Results

MAP SCALE: 1:4,000 @ A3

Document Path: S:\Projects\ASH\Skye OHL Reinforcement_SKY03_Data\E_NSC_HRA_Fig4_NVC_SKYE.mxd
 Map Author: LNF
 Checked: LNF
 Approved: BH
 Status: Rev6

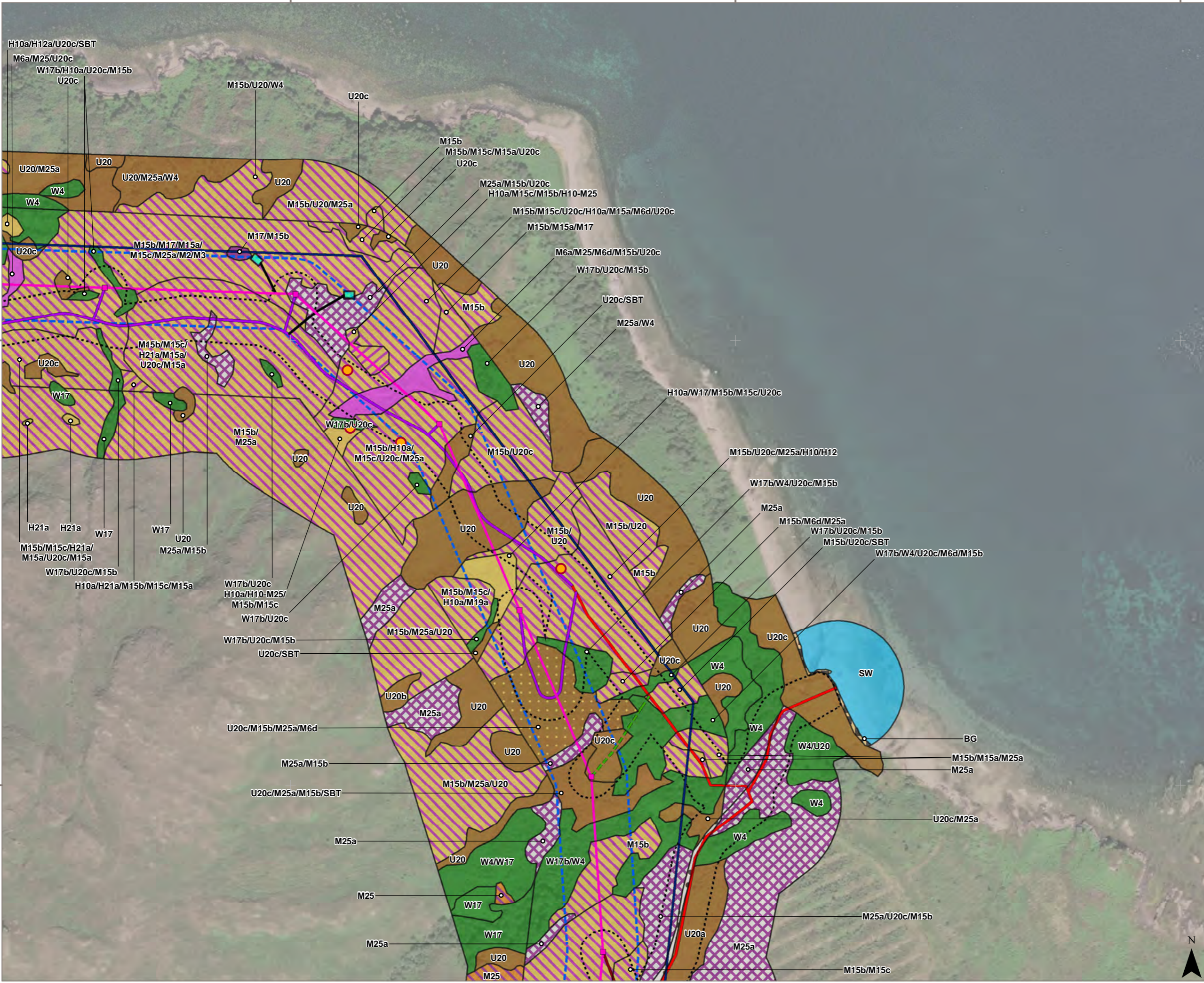
179000

179500

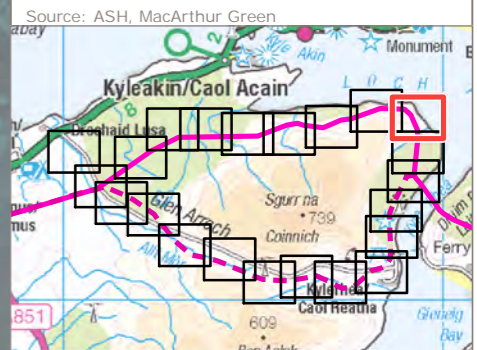
180000


825000

824500



- Legend:**
- Proposed Steel Lattice Tower
 - Proposed OHL Alignment
 - Existing 132 kV OHL to be dismantled (Steel Lattice)
 - EPZ Access Track
 - New Permanent Access Track (construction type to be determined)
 - New Permanent Access Track (Floating Construction)
 - New Temporary Access Track
 - New Temporary Spur to Towers
 - EPZ Areas
 - Limit of Deviation
 - Limit of Deviation (Access)
- Phase 1 Habitat Description (Code)**
- Broad-Leaved Semi-Natural Woodland (A1.1.1)
 - Marsh/Marshy Grassland (B5)
 - Continuous Bracken (C1.1)
 - Continuous Bracken/Wet Dwarf Shrub Heath Mosaic (C1.1/D2)
 - Acid Dry Dwarf Shrub Heath (D1.1)
 - Acid Dry Dwarf Shrub Heath/Wet Dwarf Shrub Heath Mosaic (D1.1/D2)
 - Wet Dwarf Shrub Heath (D2)
 - Blanket Bog (E1.6.1)
 - Wet Modified Bog (E1.7)
 - Acid Neutral Flush (E2.1)
 - Standing Water (G1)
 - Intertidal: Boulders/Rocks (H1.3)
 - Bare Ground (J4)
- Bryophyte/Lichen Target Notes**
- Nationally Scarce




MacArthur Green
Skye Overhead Line Reinforcement
 Figure 4k
 National Vegetation Classification (NVC) Survey Area and Survey Results

0 100 200
 Metres
 MAP SCALE: 1:4,000 @ A3

Map Author: LNF Checked: LNF Approved: BH Status: Rev6
 Document Path: S:\Projects\ASH\Skye OHL Reinforcement_SKY03_Data\E_NSc_HRA_Fig4_NVC_Skye.mxd