

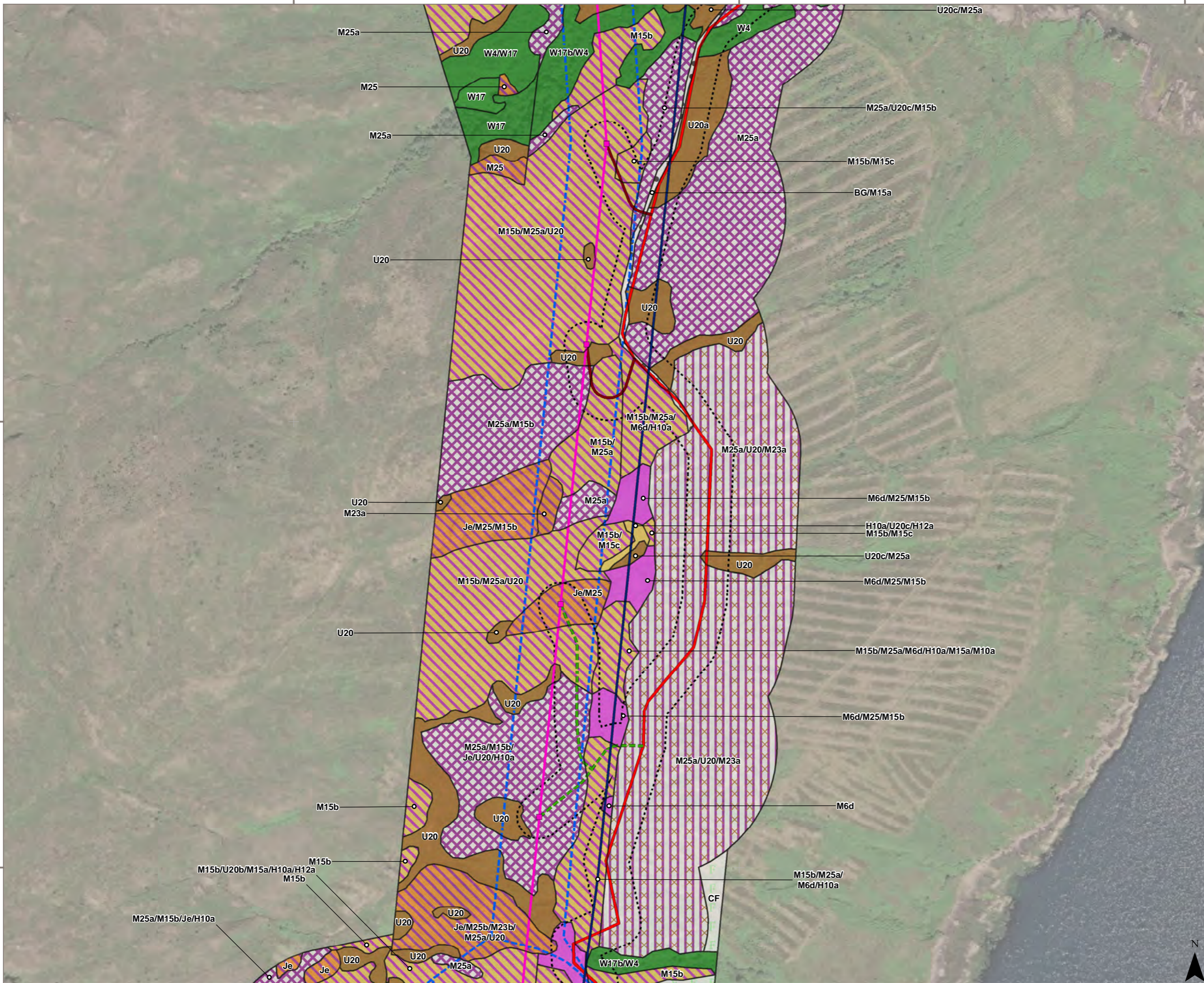
179000

179500

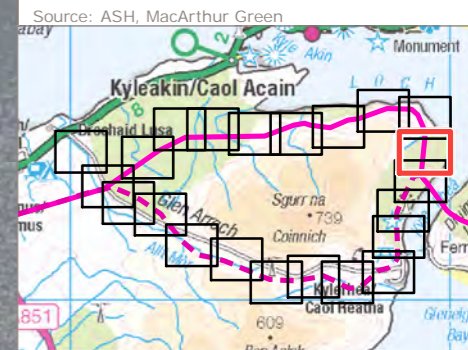
180000

824000

823500

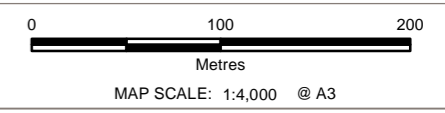


- Legend:
- Proposed Steel Lattice Tower
 - Proposed OHL Alignment
 - Existing 132 kV OHL to be dismantled (Steel Lattice)
 - New Permanent Access Track (construction type to be determined)
 - New Temporary Access Track
 - New Temporary Spur to Towers
 - Limit of Deviation
 - Limit of Deviation (Access)
- Phase 1 Habitat Description (Code)
- Broad-Leaved Semi-Natural Woodland (A1.1.1)
 - Recently Felled Coniferous Woodland (A4.2)
 - Marsh/Marshy Grassland (B5)
 - Continuous Bracken (C1.1)
 - Scattered Bracken/Wet Modified Bog Mosaic (C1.2/E1.7)
 - Acid Dry Dwarf Shrub Heath (D1.1)
 - Wet Dwarf Shrub Heath (D2)
 - Wet Modified Bog (E1.7)
 - Acid Neutral Flush (E2.1)
 - Bare Ground (J4)



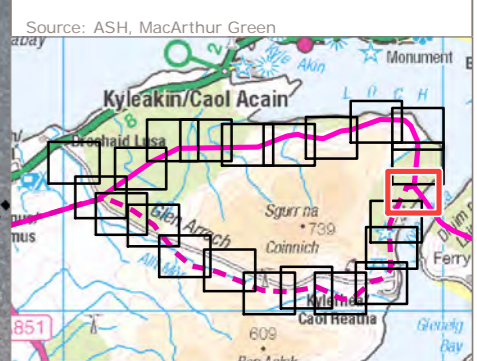
Skye Overhead Line Reinforcement

Figure 4I
National Vegetation Classification (NVC) Survey Area and Survey Results





- Legend:
- Existing Steel Lattice Tower to be Retained
 - Proposed Steel Lattice Tower
 - Proposed OHL Alignment
 - - - Alternative OHL Alignment
 - Existing 132 kV OHL to be dismantled (Steel Lattice)
 - EPZ Access Track
 - Existing Access Track to be upgraded
 - New Permanent Access Track (construction type to be determined)
 - New Temporary Access Track
 - New Temporary Spur to Towers
 - Section Divide
 - EPZ Areas
 - - - Limit of Deviation
 - - - Limit of Deviation (Access)
- Phase 1 Habitat Description (Code)
- Broad-Leaved Semi-Natural Woodland (A1.1.1)
 - Coniferous Plantation Woodland (A1.2.2)
 - Recently Felled Coniferous Woodland (A4.2)
 - Marsh/Marshy Grassland (B5)
 - Continuous Bracken (C1.1)
 - Scattered Bracken/Wet Dwarf Shrub Heath Mosaic (C1.2/D2)
 - Scattered Bracken/Wet Modified Bog Mosaic (C1.2/E1.7)
 - Acid Dry Dwarf Shrub Heath (D1.1)
 - Wet Dwarf Shrub Heath (D2)
 - Wet Modified Bog (E1.7)
 - Acid Neutral Flush (E2.1)
 - Building (J3.6)
 - Bare Ground (J4)



MacArthur Green

Skye Overhead Line Reinforcement

Figure 4m

National Vegetation Classification (NVC) Survey Area and Survey Results

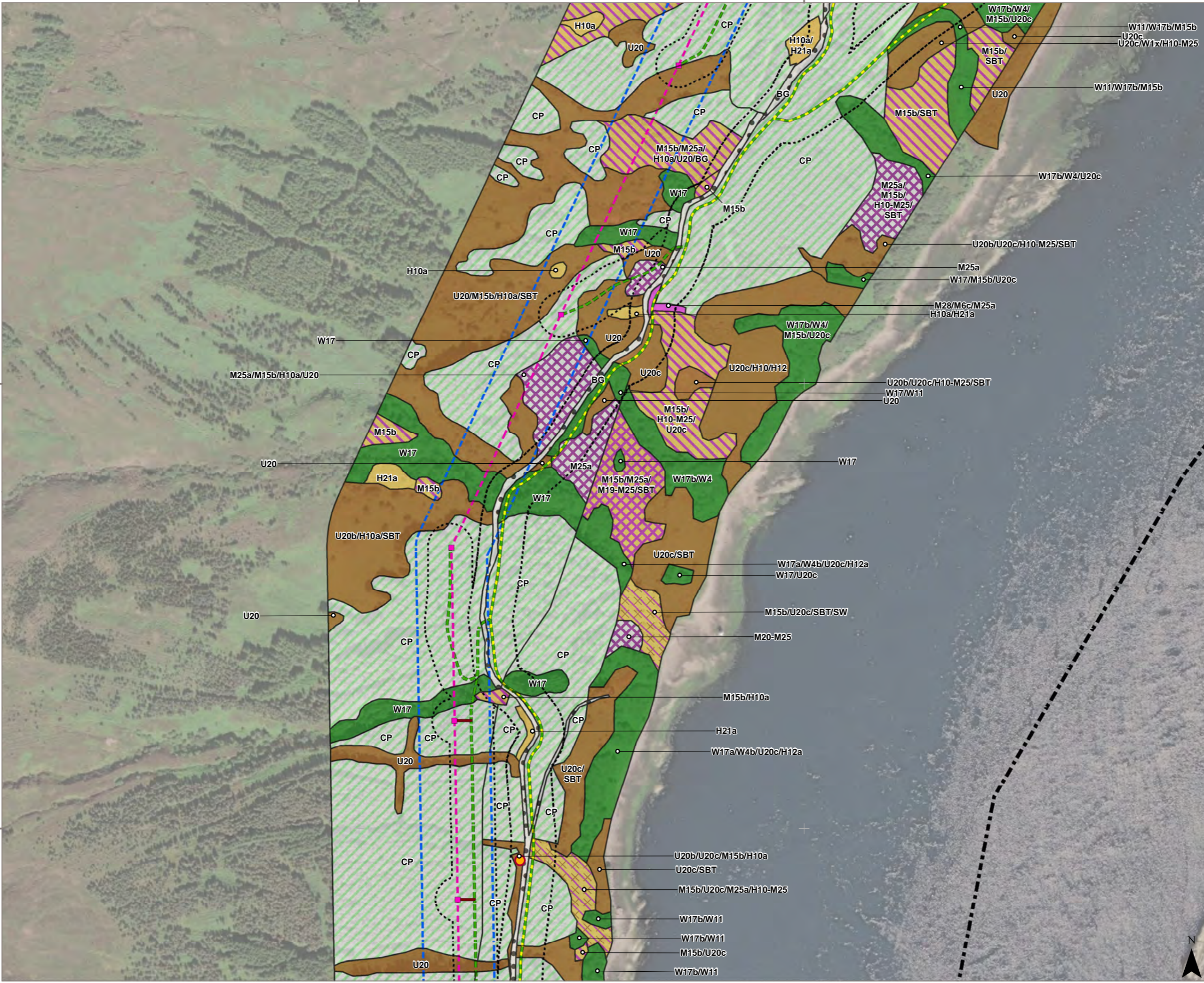
MAP SCALE: 1:4,000 @ A3

178500

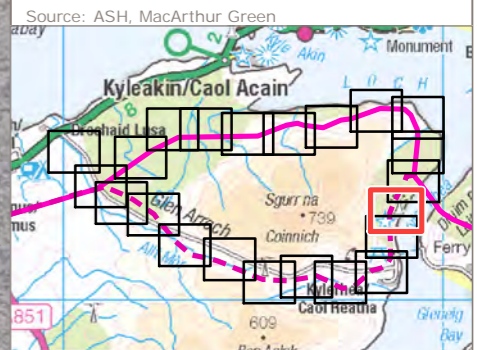
179000

822500

822000



- Legend:**
- Proposed Steel Lattice Tower
 - - - Alternative OHL Alignment
 - Existing Access Track to be upgraded
 - New Temporary Access Track
 - New Temporary Spur to Towers
 - Section Divide
 - Limit of Deviation
 - Limit of Deviation (Access)
- Phase 1 Habitat Description (Code)**
- Broad-Leaved Semi-Natural Woodland (A1.1.1)
 - Coniferous Plantation Woodland (A1.2.2)
 - Continuous Bracken (C1.1)
 - Scattered Bracken/Wet Dwarf Shrub Heath Mosaic (C1.2/D2)
 - Acid Dry Dwarf Shrub Heath (D1.1)
 - Wet Dwarf Shrub Heath (D2)
 - Wet Dwarf Shrub Heath/Wet Modified Bog Mosaic (D2/E1.7)
 - Wet Modified Bog (E1.7)
 - Acid Neutral Flush (E2.1)
 - Bare Ground (J4)
- Bryophyte/Lichen Target Notes**
- Nationally Scarce



MacArthur Green

Skye Overhead Line Reinforcement

Figure 4n

National Vegetation Classification (NVC) Survey Area and Survey Results

0 100 200
Metres

MAP SCALE: 1:4,000 @ A3

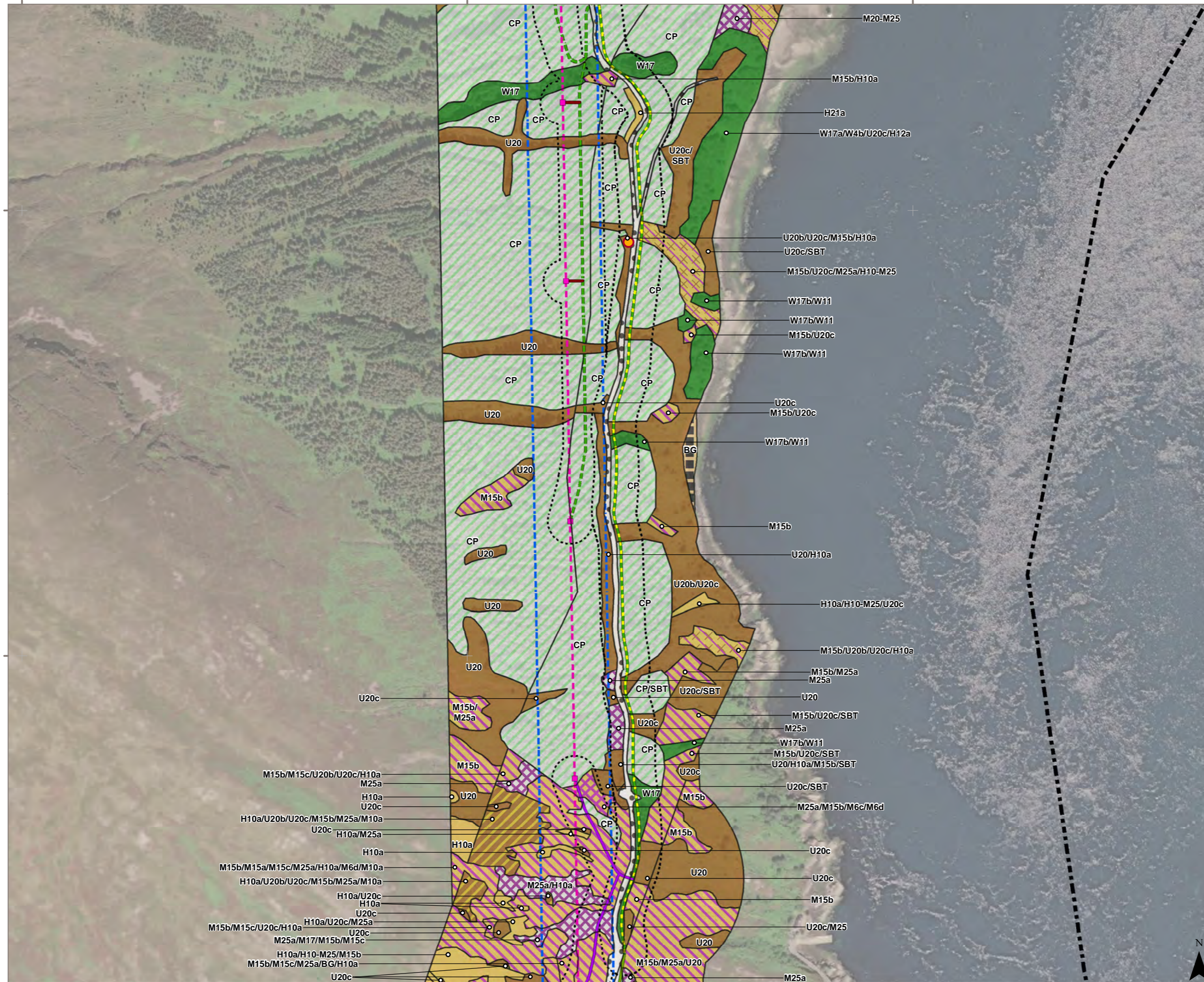
178000

178500

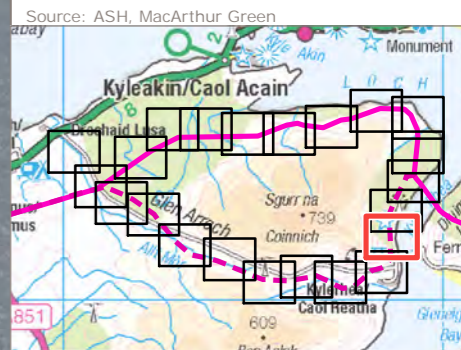
179000

822000

821500



- Legend:
- Proposed Steel Lattice Tower
 - Alternative OHL Alignment
 - Existing Access Track
 - Existing Access Track to be upgraded
 - New Permanent Access Track (Floating Construction)
 - New Temporary Access Track
 - New Temporary Spur to Towers
 - Section Divide
 - Limit of Deviation
 - Limit of Deviation (Access)
- Phase 1 Habitat Description (Code)
- Broad-Leaved Semi-Natural Woodland (A1.1.1)
 - Coniferous Plantation Woodland (A1.2.2)
 - Continuous Bracken (C1.1)
 - Continuous Bracken/Acid Dry Dwarf Shrub Heath Mosaic (C1.1/D1.1)
 - Scattered Bracken/Wet Dwarf Shrub Heath Mosaic (C1.2/D2)
 - Acid Dry Dwarf Shrub Heath (D1.1)
 - Wet Dwarf Shrub Heath (D2)
 - Wet Dwarf Shrub Heath/Wet Modified Bog Mosaic (D2/E1.7)
 - Wet Modified Bog (E1.7)
 - Intertidal: Boulders/Rocks (H1.3)
 - Bare Ground (J4)
- Bryophyte/Lichen Target Notes
- Nationally Scarce



Source: ASH, MacArthur Green

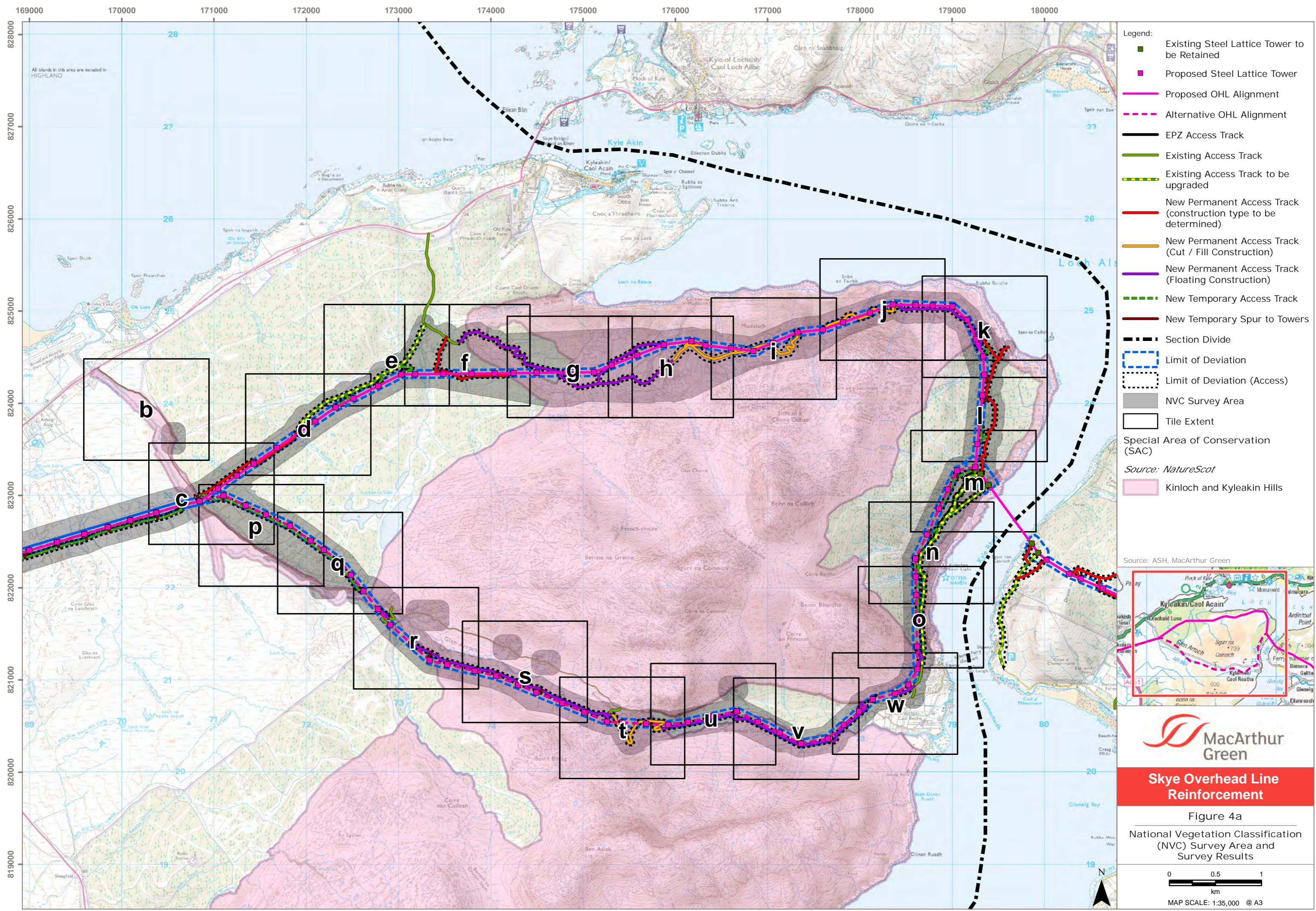
MacArthur Green

Skye Overhead Line Reinforcement

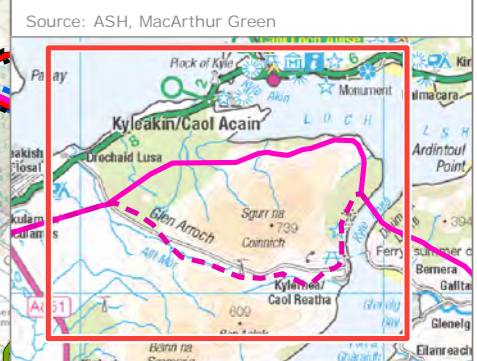
Figure 4o

National Vegetation Classification (NVC) Survey Area and Survey Results

MAP SCALE: 1:4,000 @ A3



- Legend:
- Existing Steel Lattice Tower to be Retained
 - Proposed Steel Lattice Tower
 - Proposed OHL Alignment
 - - - Alternative OHL Alignment
 - EPZ Access Track
 - Existing Access Track
 - Existing Access Track to be upgraded
 - New Permanent Access Track (construction type to be determined)
 - New Permanent Access Track (Cut / Fill Construction)
 - New Permanent Access Track (Floating Construction)
 - New Temporary Access Track
 - New Temporary Spur to Towers
 - - - Section Divide
 - Limit of Deviation
 - Limit of Deviation (Access)
 - NVC Survey Area
 - Tile Extent
- Special Area of Conservation (SAC)
- Source: NatureScot
- Kinloch and Kyleakin Hills



MacArthur Green

Skye Overhead Line Reinforcement

Figure 4a

National Vegetation Classification (NVC) Survey Area and Survey Results

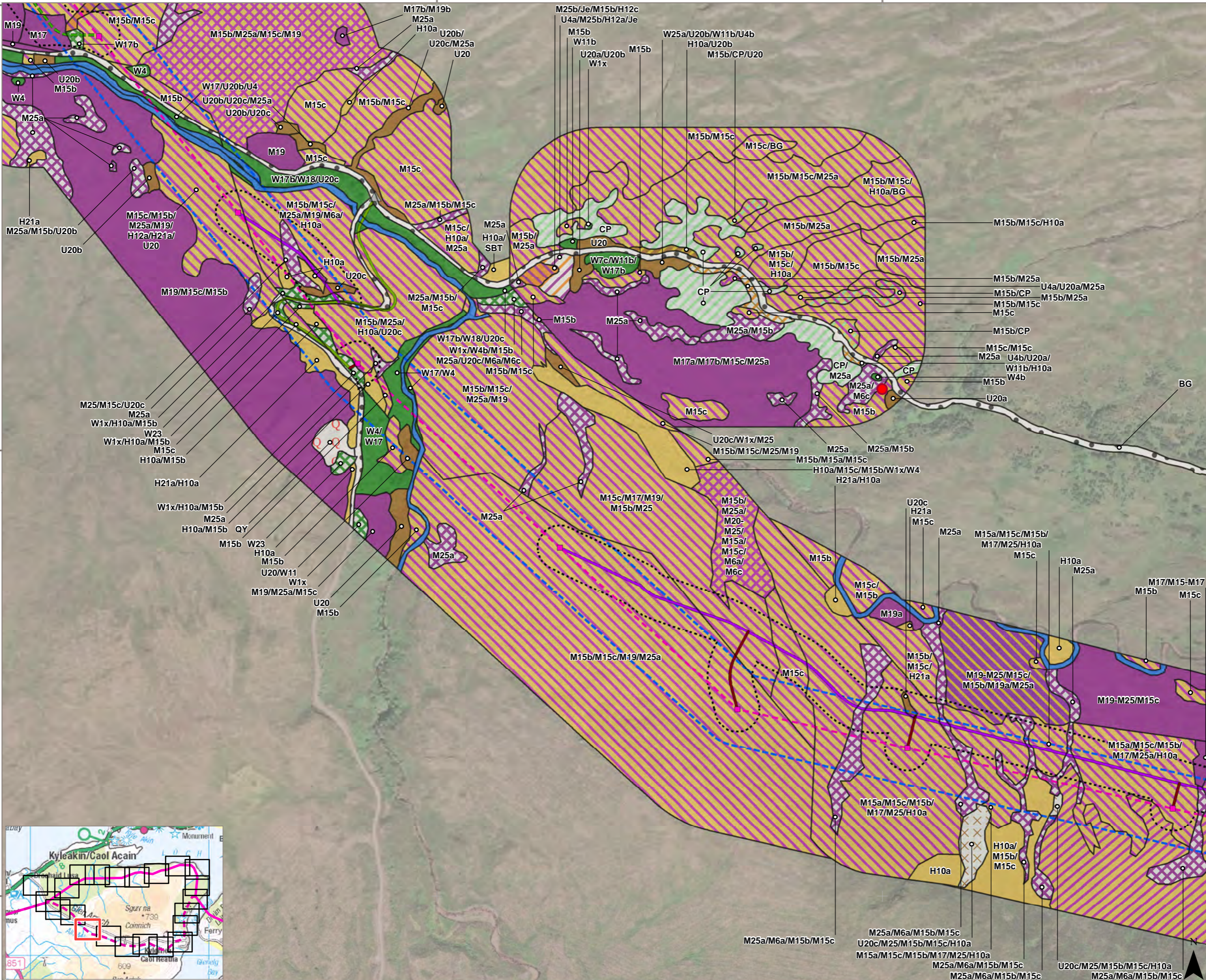
0 0.5 1
km

MAP SCALE: 1:35,000 @ A3

Document Path: S:\Projects\ASH\Skye OHL Reinforcement_NVC_Sc_HRA_Fig4_NVC_Sec3_Overview_SKYE.mxd Map Author: LM Checked: LNF Approved: BH Status: Rev6

822000
821500
821000

173000 173500



- Legend:
- Proposed Steel Lattice Tower
 - Alternative OHL Alignment
 - Existing Access Track
 - New Permanent Access Track (Floating Construction)
 - New Temporary Access Track
 - New Temporary Spur to Towers
 - ▲ Bellmouth Location
 - Limit of Deviation
 - Limit of Deviation (Access)
- Phase 1 Habitat Description (Code)
- Broad-Leaved Semi-Natural Woodland (A1.1.1)
 - Coniferous Plantation Woodland (A1.2.2)
 - Coniferous Plantation Woodland/Wet Dwarf Shrub Heath Mosaic (A1.2.2/D2)
 - Dense/Continuous Scrub (A2.1)
 - Unimproved Acid Grassland/Marsh/Marshy Grassland Mosaic (B1.1/B5)
 - Unimproved Acid Grassland/Scattered Bracken Mosaic (B1.1/C1.2)
 - Marsh/Marshy Grassland (B5)
 - Continuous Bracken (C1.1)
 - Continuous Bracken/Acid Dry Dwarf Shrub Heath Mosaic (C1.1/D1.1)
 - Scattered Bracken (C1.2)
 - Acid Dry Dwarf Shrub Heath (D1.1)
 - Acid Dry Dwarf Shrub Heath/Wet Dwarf Shrub Heath Mosaic (D1.1/D2)
 - Wet Dwarf Shrub Heath (D2)
 - Wet Dwarf Shrub Heath/Blanket Bog Mosaic (D2/E1.6.1)
 - Wet Dwarf Shrub Heath/Wet Modified Bog Mosaic (D2/E1.7)
 - Blanket Bog (E1.6.1)
 - Wet Modified Bog (E1.7)
 - Running Water (G2)
 - Quarry (I2.1)
 - Bare Ground (J4)
- Bryophyte/Lichen Target Notes
- Nationally Rare

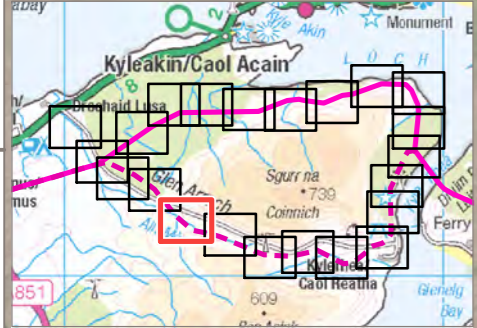
Source: ASH, MacArthur Green

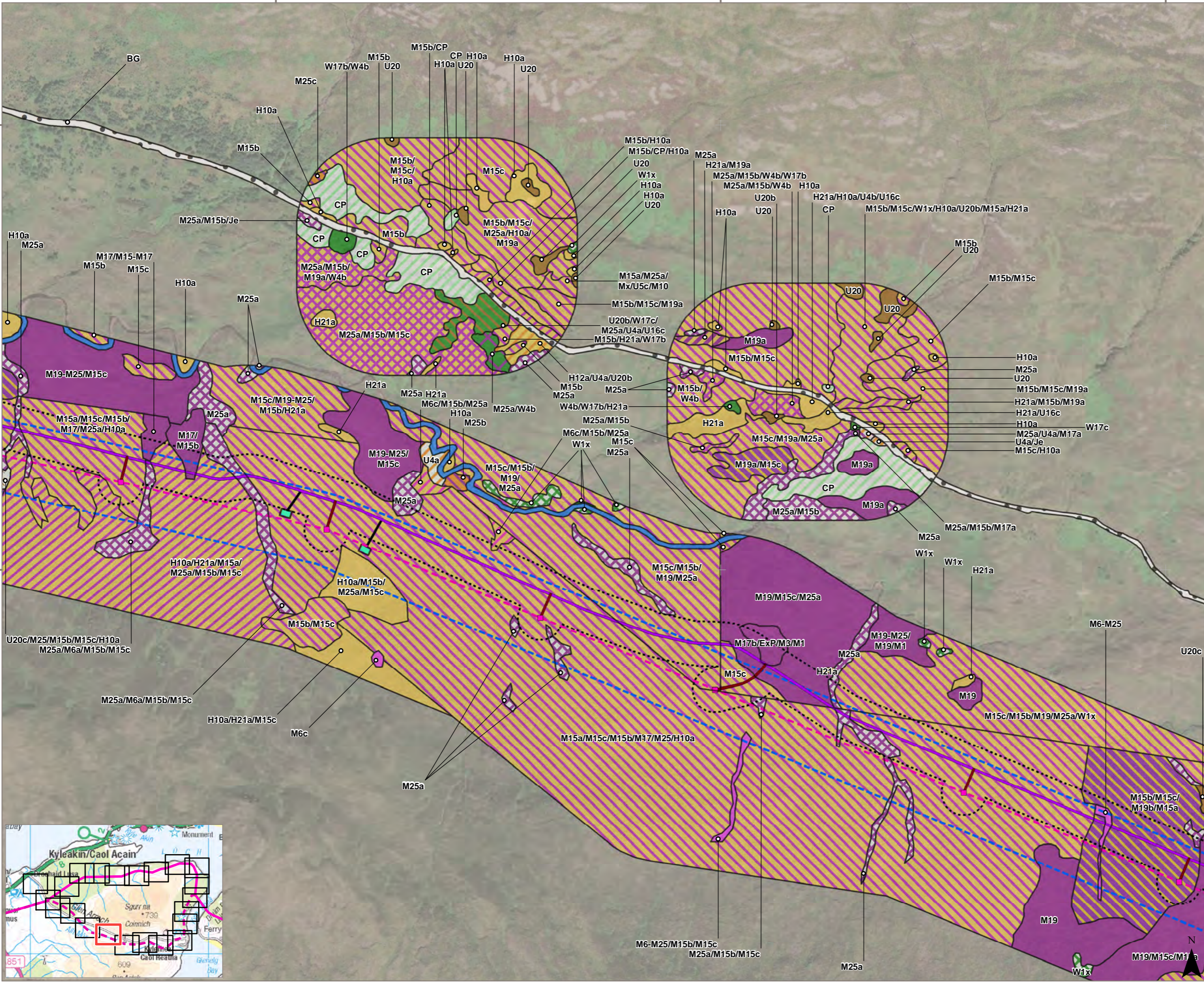
Skye Overhead Line Reinforcement

Figure 4r

National Vegetation Classification (NVC) Survey Area and Survey Results

MAP SCALE: 1:4,000 @ A3





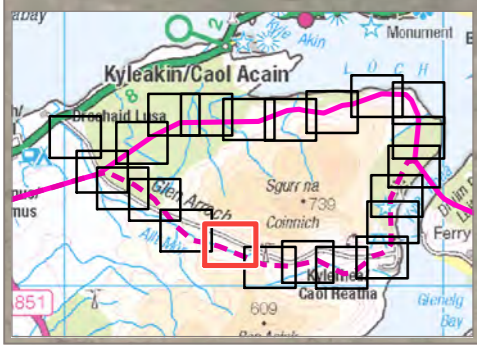
Legend:

- Proposed Steel Lattice Tower
- Alternative OHL Alignment
- EPZ Access Track
- New Permanent Access Track (Floating Construction)
- New Temporary Spur to Towers
- EPZ Areas
- Limit of Deviation
- Limit of Deviation (Access)

Phase 1 Habitat Description (Code)

- Broad-Leaved Semi-Natural Woodland (A1.1.1)
- Broad-Leaved Semi-Natural Woodland/Continuous Bracken Mosaic (A1.1.1/C1.1)
- Broad-Leaved Semi-Natural Woodland/Wet Modified Bog Mosaic (A1.1.1/E1.7)
- Coniferous Plantation Woodland (A1.2.2)
- Dense/Continuous Scrub (A2.1)
- Unimproved Acid Grassland (B1.1)
- Unimproved Acid Grassland/Wet Modified Bog Mosaic (B1.1/E1.7)
- Marsh/Marshy Grassland (B5)
- Continuous Bracken (C1.1)
- Scattered Bracken (C1.2)
- Acid Dry Dwarf Shrub Heath (D1.1)
- Acid Dry Dwarf Shrub Heath/Wet Dwarf Shrub Heath Mosaic (D1.1/D2)
- Acid Dry Dwarf Shrub Heath /Blanket Bog Mosaic (D1.1/E1.6.1)
- Wet Dwarf Shrub Heath (D2)
- Wet Dwarf Shrub Heath/Blanket Bog Mosaic (D2/E1.6.1)
- Wet Dwarf Shrub Heath/Wet Modified Bog Mosaic (D2/E1.7)
- Wet Dwarf Shrub Heath/Acid Neutral Flush Mosaic (D2/E2.1)
- Dry Heath/Acid Grassland Mosaic (D5)
- Blanket Bog (E1.6.1)
- Wet Modified Bog (E1.7)
- Acid Neutral Flush (E2.1)
- Running Water (G2)
- Bare Ground (J4)

Source: ASH, MacArthur Green



MacArthur Green

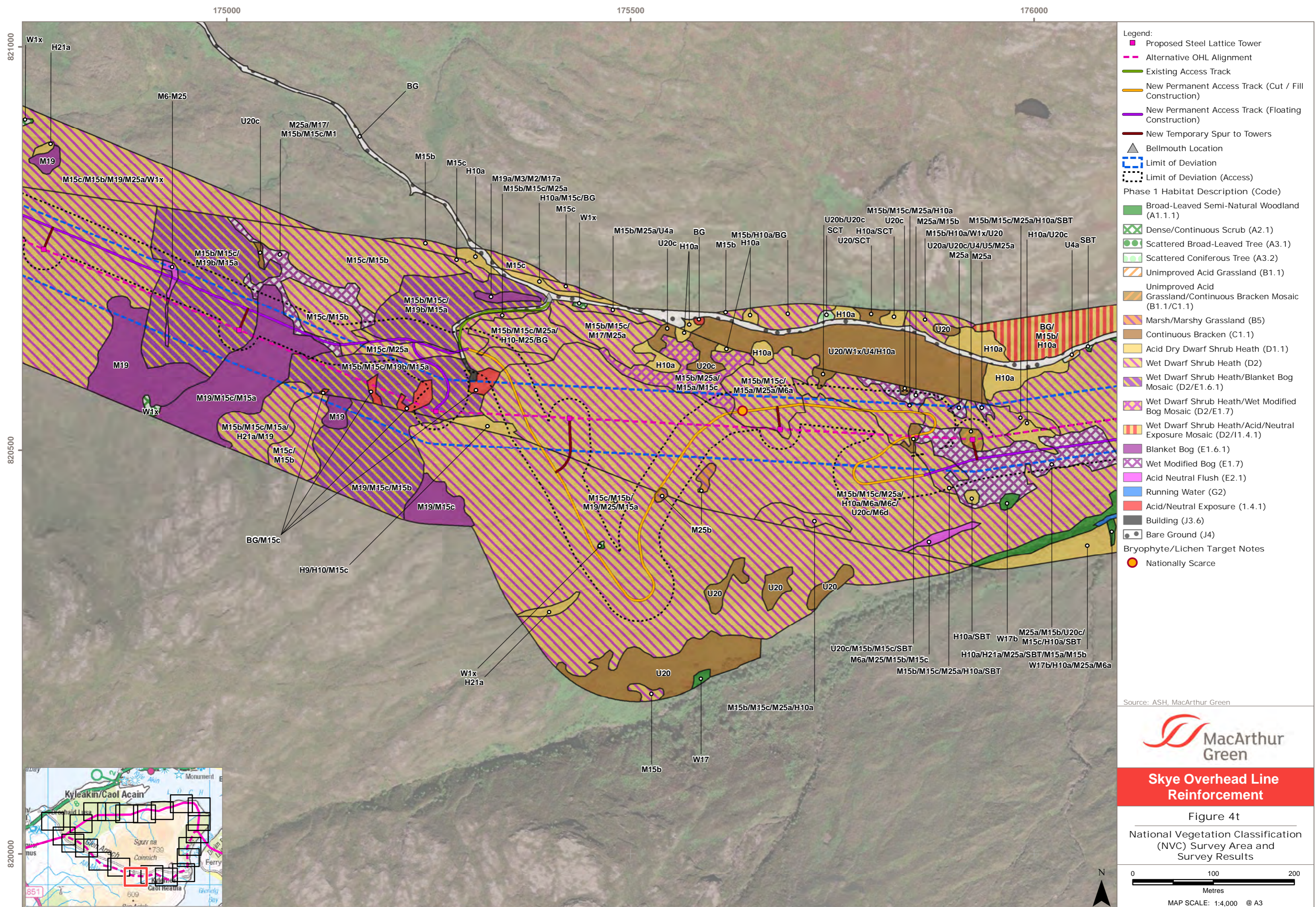
Skye Overhead Line Reinforcement

Figure 4s

National Vegetation Classification (NVC) Survey Area and Survey Results

0 100 200 Metres

MAP SCALE: 1:4,000 @ A3



- Legend:**
- Proposed Steel Lattice Tower
 - Alternative OHL Alignment
 - Existing Access Track
 - New Permanent Access Track (Cut / Fill Construction)
 - New Permanent Access Track (Floating Construction)
 - New Temporary Spur to Towers
 - ▲ Bellmouth Location
 - Limit of Deviation
 - Limit of Deviation (Access)
- Phase 1 Habitat Description (Code)**
- Broad-Leaved Semi-Natural Woodland (A1.1.1)
 - Dense/Continuous Scrub (A2.1)
 - Scattered Broad-Leaved Tree (A3.1)
 - Scattered Coniferous Tree (A3.2)
 - Unimproved Acid Grassland (B1.1)
 - Unimproved Acid Grassland/Continuous Bracken Mosaic (B1.1/C1.1)
 - Marsh/Marshy Grassland (B5)
 - Continuous Bracken (C1.1)
 - Acid Dry Dwarf Shrub Heath (D1.1)
 - Wet Dwarf Shrub Heath (D2)
 - Wet Dwarf Shrub Heath/Blanket Bog Mosaic (D2/E1.6.1)
 - Wet Dwarf Shrub Heath/Wet Modified Bog Mosaic (D2/E1.7)
 - Wet Dwarf Shrub Heath/Acid/Neutral Exposure Mosaic (D2/I1.4.1)
 - Blanket Bog (E1.6.1)
 - Wet Modified Bog (E1.7)
 - Acid Neutral Flush (E2.1)
 - Running Water (G2)
 - Acid/Neutral Exposure (I.4.1)
 - Building (J3.6)
 - Bare Ground (J4)
- Bryophyte/Lichen Target Notes**
- Nationally Scarce

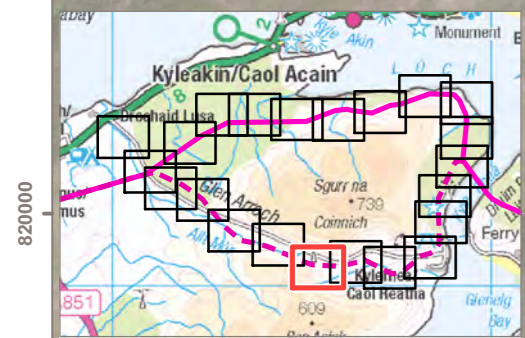
Source: ASH, MacArthur Green

Skye Overhead Line Reinforcement

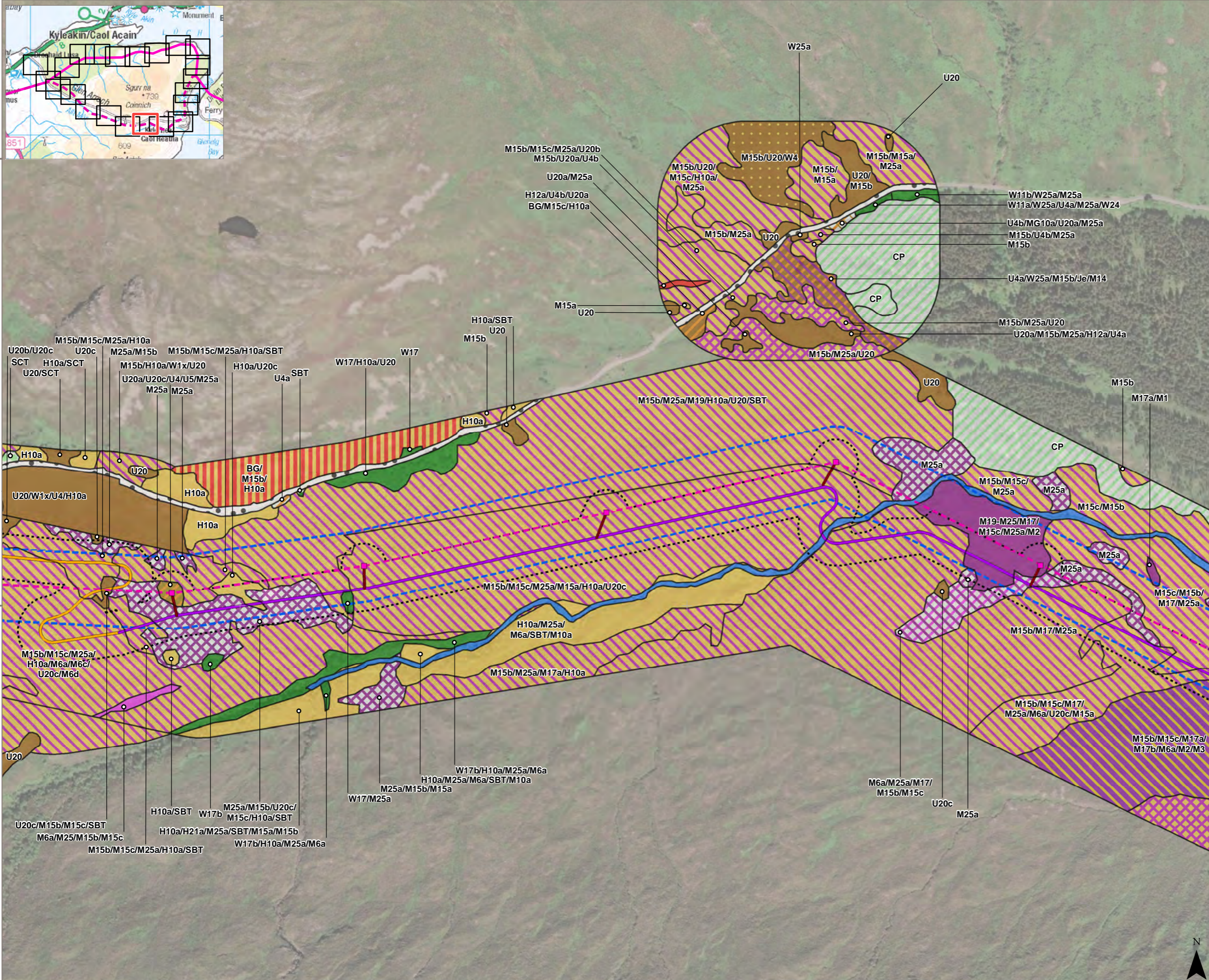
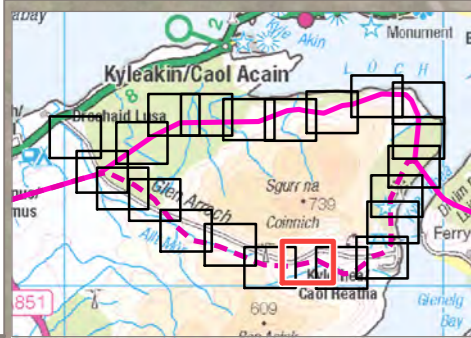
Figure 4t

National Vegetation Classification (NVC) Survey Area and Survey Results

MAP SCALE: 1:4,000 @ A3



Map Author: LNF Checked: LNF Approved: BH Status: Rev6
 Document Path: S:\Projects\ASH\Skye OHL Reinforcement_SKY03_Data\E_NSc_HRA_Fig4_NVC_Sec3_SKYE.mxd



Legend:

- Proposed Steel Lattice Tower
- - - Alternative OHL Alignment
- New Permanent Access Track (Cut / Fill Construction)
- New Permanent Access Track (Floating Construction)
- New Temporary Spur to Towers
- Limit of Deviation
- Limit of Deviation (Access)

Phase 1 Habitat Description (Code)

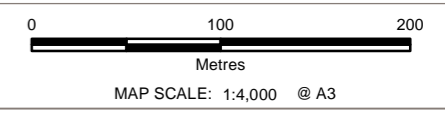
- Broad-Leaved Semi-Natural Woodland (A1.1.1)
- Coniferous Plantation Woodland (A1.2.2)
- Scattered Broad-Leaved Tree (A3.1)
- Scattered Coniferous Tree (A3.2)
- Unimproved Acid Grassland (B1.1)
- Unimproved Acid Grassland/Continuous Bracken Mosaic (B1.1/C1.1)
- Unimproved Acid Grassland/Scattered Bracken Mosaic (B1.1/C1.2)
- Continuous Bracken (C1.1)
- Continuous Bracken/Wet Dwarf Shrub Heath Mosaic (C1.1/D2)
- Continuous Bracken/Dry Heath/Acid Grassland Mosaic (C1.1/D5)
- Continuous Bracken/Wet Heath/Acid Grassland Mosaic (C1.1/D6)
- Acid Dry Dwarf Shrub Heath (D1.1)
- Wet Dwarf Shrub Heath (D2)
- Wet Dwarf Shrub Heath/Blanket Bog Mosaic (D2/E1.6.1)
- Wet Dwarf Shrub Heath/Wet Modified Bog Mosaic (D2/E1.7)
- Wet Dwarf Shrub Heath/Acid/Neutral Exposure Mosaic (D2/I1.4.1)
- Blanket Bog (E1.6.1)
- Wet Modified Bog (E1.7)
- Wet Modified Bog/Acid Neutral Flush Mosaic (E1.7/E2.1)
- Acid Neutral Flush (E2.1)
- Running Water (G2)
- Acid/Neutral Exposure (1.4.1)
- Bare Ground (J4)

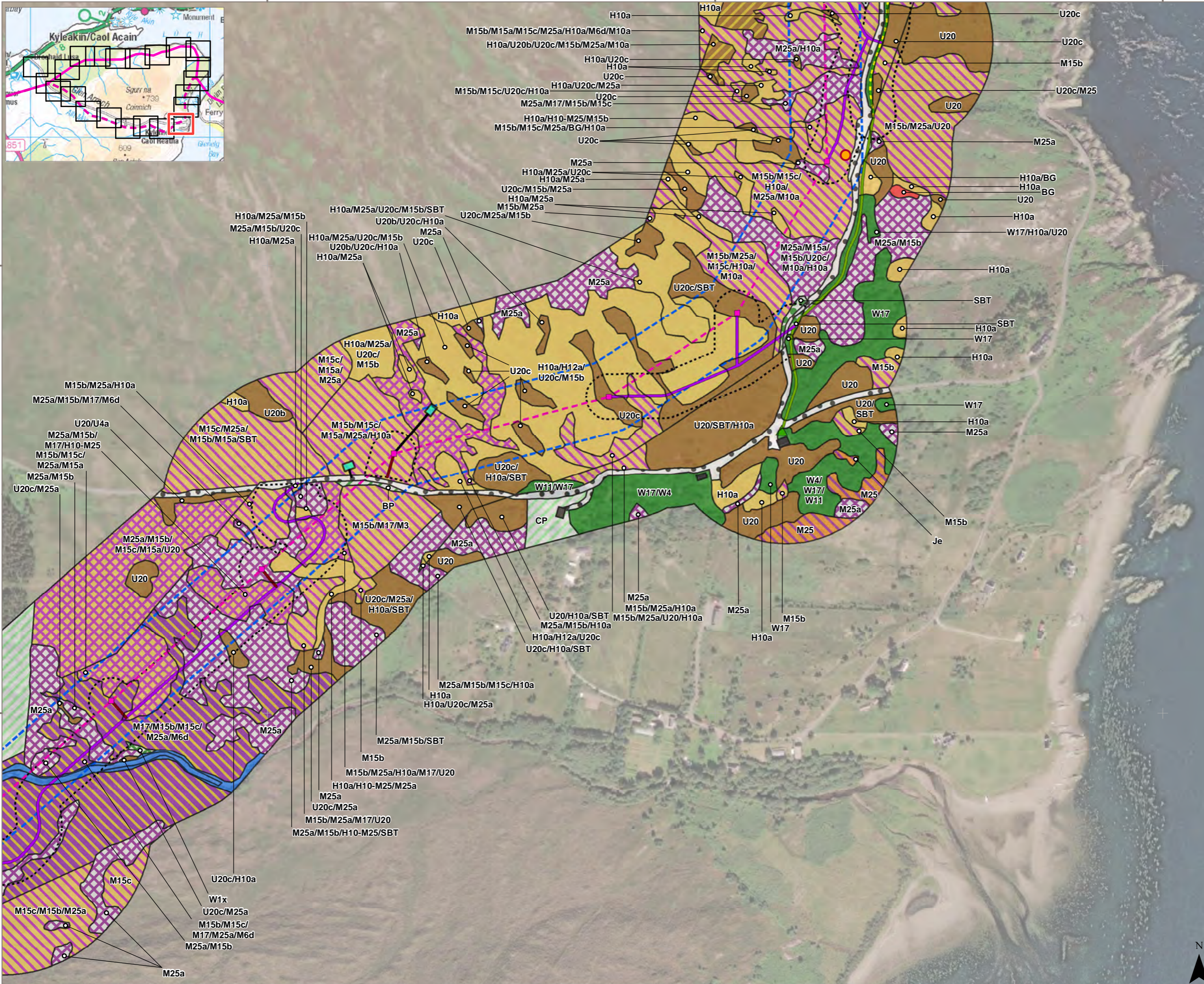
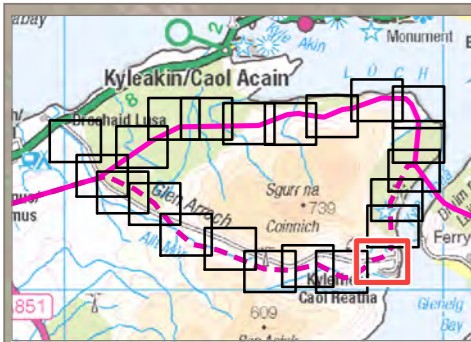
Source: ASH, MacArthur Green



Skye Overhead Line Reinforcement

Figure 4u
National Vegetation Classification (NVC) Survey Area and Survey Results





- Legend:**
- Proposed Steel Lattice Tower
 - Alternative OHL Alignment
 - EPZ Access Track
 - Existing Access Track
 - Existing Access Track to be upgraded
 - New Permanent Access Track (Floating Construction)
 - New Temporary Spur to Towers
 - ▲ Existing Bellmouth
 - EPZ Areas
 - - - Limit of Deviation
 - - - Limit of Deviation (Access)
- Phase 1 Habitat Description (Code)**
- Broad-Leaved Semi-Natural Woodland (A1.1.1)
 - Broad-Leaved Plantation Woodland (A1.1.2)
 - Coniferous Plantation Woodland (A1.2.2)
 - Dense/Continuous Scrub (A2.1)
 - Scattered Broad-Leaved Tree (A3.1)
 - Marsh/Marshy Grassland (B5)
 - Continuous Bracken (C1.1)
 - Continuous Bracken/Acid Dry Dwarf Shrub Heath Mosaic (C1.1/D1.1)
 - Acid Dry Dwarf Shrub Heath (D1.1)
 - Wet Dwarf Shrub Heath (D2)
 - Wet Dwarf Shrub Heath/Blanket Bog Mosaic (D2/E1.6.1)
 - Wet Dwarf Shrub Heath/Wet Modified Bog Mosaic (D2/E1.7)
 - Wet Modified Bog (E1.7)
 - Running Water (G2)
 - Acid/Neutral Exposure (1.4.1)
 - Building (J3.6)
 - Bare Ground (J4)
- Bryophyte/Lichen Target Notes**
- Nationally Scarce

Source: ASH, MacArthur Green



Skye Overhead Line Reinforcement

Figure 4w

National Vegetation Classification (NVC) Survey Area and Survey Results

0 100 200
Metres

MAP SCALE: 1:4,000 @ A3