



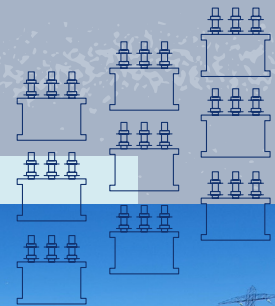
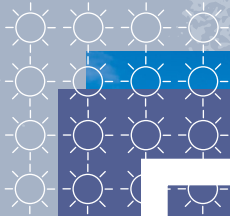
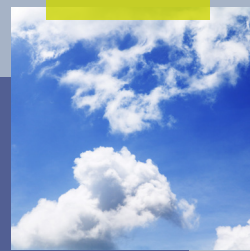
Scottish & Southern  
Electricity Networks

TRANSMISSION

# South Formartine 400/132kV Substation

Site Selection Consultation Event

June 2026



[ssen-transmission.co.uk/south-formartine](https://ssen-transmission.co.uk/south-formartine)

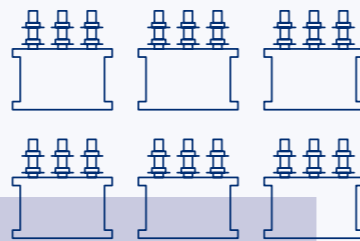
# Contents

Powering change together	<b>03</b>	Environmental considerations	<b>12</b>
Project overview	<b>04</b>	Engineering considerations	<b>13</b>
Project location	<b>05</b>	The Town and Country Planning Process	<b>14</b>
Beyond 2030: Powering Scotland's future	<b>07</b>	Other projects in the local area	<b>15</b>
Our site selection process	<b>08</b>	Lasting legacy	<b>16</b>
Site options	<b>09</b>	Next steps	<b>17</b>
Project timeline	<b>11</b>	Your feedback	<b>18</b>

## The Site Selection Consultation Events will be taking place on:

**Tuesday 9 June 2026, 2–7pm**  
Ellon Parish Church, 4 Station Rd, Ellon, AB41 9AE

**Thursday 11 June 2026, 2–7pm**  
The Axis Centre, 9 School Rd, Newmachar, Aberdeen, AB21 0WB



## Why we are here today

We are here to introduce the South Formartine 400/132 kilovolt (kV) Substation project and allow you to engage with the project in the early stages of development. This project aims to construct a new 400/132kV substation in the South Formartine area, along the existing Peterhead to Persley to Kintore overhead line, strengthening the local electricity network to support current and future energy needs.

At this consultation, you are invited to:

- Review the proposed site locations for the new substation.
- Learn about the reasons behind selecting these locations.
- Share your opinions on potential impacts or concerns.

We will have experts on hand to answer any questions you may have. Your feedback is important and will help shape decisions about the substation's final location, its design, connections to the existing network and ways to minimise any effects on your community. By sharing your views, you're helping us to understand what matters most to the people who live and work here.

# Powering change together



**If we want to deliver on clean power and energy security targets and provide power for future generations, upgrade to Scotland's electricity transmission infrastructure is needed.**

The shift to a cleaner, more sustainable future is about more than tackling the impact of climate change, it's about ensuring that future generations can thrive.

Countries around the world are investing in their energy infrastructure to support increasing electricity demands and to deliver on clean power targets and the UK is leading the way in building a modern, sustainable energy system for the future.

## We all have a part to play

The UK and Scottish governments have set ambitious energy security and clean power targets, and we all have a part to play in delivering them.

At SSEN Transmission, we work closely with the National Energy System Operator (NESO) to connect vast renewable energy resources - like solar, wind, hydro and marine generation - to areas of demand across the country. Scotland will play a particularly big role in meeting increasing electricity demand.

**But there is more to be done. By 2050, the north of Scotland is expected to contribute more than 50GW of low carbon power to the GB energy system. Today, the region has around 11GW of renewable generation connected to the network.**

At SSEN Transmission, it is our role to build the energy system of the future. To do that, we are planning to invest around **£29 billion** in the coming years to upgrade the electricity transmission network in the north of Scotland. It's an investment that will unlock cleaner, more secure energy for homes and businesses now, and for generations to come. **By 2050, annual electricity demand is expected to at least double** - our investment will support the connection of more clean power to meet that demand to the GB electricity network, supporting up to **17,500 jobs in Scotland**, with more than **8,000** of those in the north of Scotland, along the way.

## Who we are

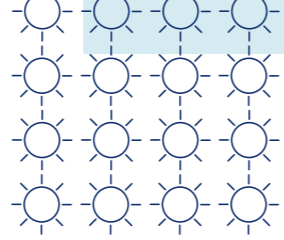
We are responsible for maintaining and investing in the electricity transmission network in the north of Scotland. We are part of SSE plc, one of the world's leading energy companies with a rich heritage in Scotland that dates back more than 80 years. We are also closely regulated by the GB energy regulator Ofgem, who determines how much revenue we are allowed to earn for constructing, maintaining and renovating our transmission network.

## What we do

We manage the electricity network across our region which covers a quarter of the UK's land mass, crossing some of the country's most challenging terrain. We connect renewable energy sources to our network in the north of Scotland and then transport it to where it needs to be. From underground/subsea cables and overhead lines to electricity substations, our network keeps your lights on all year round.

## Working with you

We understand that the work we do can have an impact on communities and we are committed to minimising our impacts and maximising all the benefits that our developments can bring to your area. To do that we provide all the information you need to know about our plans and how they will impact communities like yours. The way we consult is also a two-way street and we want to hear people's views, concerns, or ideas - and harness local knowledge - so that our work benefits communities today and long into the future. You can share your views with us at: [ssen-transmission.co.uk/talk-to-us/contact-us/](https://ssen-transmission.co.uk/talk-to-us/contact-us/)



# Project overview

## Project need

Looking ahead, large amounts of new electricity—mainly from renewable sources like offshore wind—are expected to connect to the network from the late 2020s onwards. This will significantly increase the amount of power that needs to be transported across the region.

In the north-east of Scotland, the existing network is already becoming constrained, particularly between the Rothienorman and Kintore substations. Without upgrades, this would limit the ability to move electricity efficiently and could impact energy security.

To address this, a new 400kV substation is proposed in the South Formartine area, in the vicinity of the Persley Tee point. This will form part of a wider programme of reinforcement works, tying in to the Aberdeen grid and providing stability and clean energy for the city.

We carefully consider different options when changes to the network are needed. This includes balancing:

- Cost and technical performance
- Environmental impact
- Effects on local communities and land use

Only solutions that are practical, affordable, and likely to receive planning approval are taken forward.

Construction and energisation of the new substation is currently planned for completion by October 2032.

## Project scope

### A new 400/132kV substation

A modern substation will be built with a highly reliable double busbar\* design. It will include multiple connection points (at least 18) and space for future expansion.

### Planning for future growth

The new site will be designed to allow for:

- A potential future HVDC (high-voltage direct current) connection
- Up to 2 additional 132kV connections and 4 additional 400kV connections
- A potential future 132kV substation that will tie in to Aberdeen 132kV grid.

### New transformers

Two large transformers will be installed to connect the 400kV and 132kV networks, allowing electricity to flow efficiently between them.

### Removing older equipment

Existing, older transformers and associated equipment at Persley substation will be removed.

### New connection points (feeder bays)

Several new connection points will be built to link power lines and equipment into the network, including:

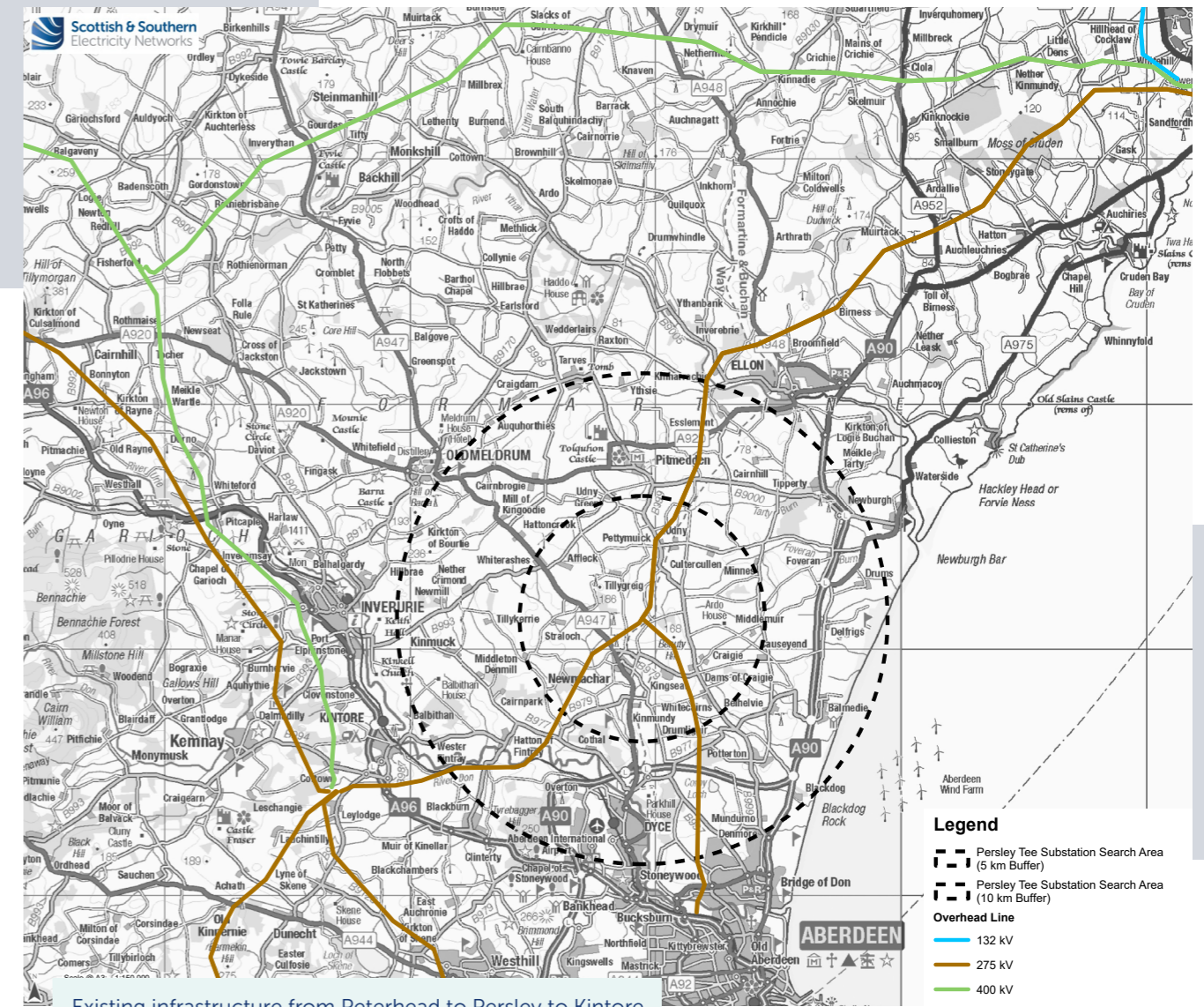
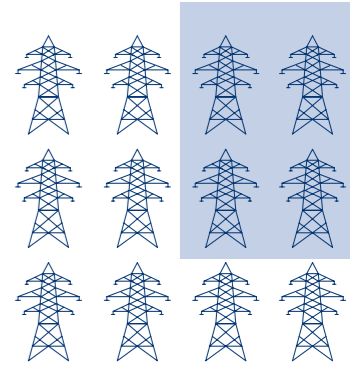
- Connections between Kintore and Peterhead
- Connections between Persley Tee Point and Peterhead
- Space provision for future connections

### Connecting to the existing network

There will be a requirement to tie in the new substation to the existing overhead line. We will be consulting on these options at future events.

\*A busbar is a conductor that serves as a connection point for multiple circuits in a substation. A **double busbar** means there are two of these conductors, allowing electricity to be routed through either one. This makes it easier to maintain the equipment or fix problems without shutting down the whole substation and helps keep power flowing reliably and flexibly across the network.

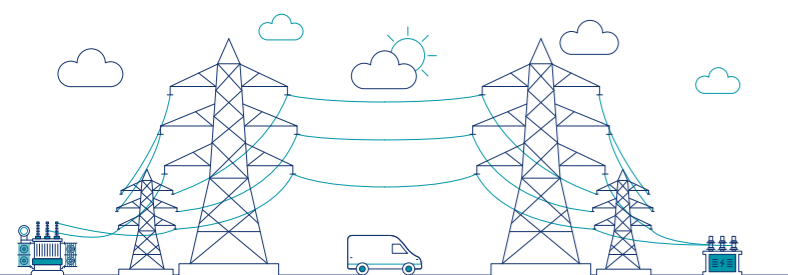
# Project location



Existing infrastructure from Peterhead to Persley to Kintore

The site search radius for the new substation was centred around the Persley Tee Point, north east of Newmachar.

A tee point is a junction on an overhead line where a single line splits into two directions in the shape of the letter “T”. For this project, this is where the main Peterhead–Kintore overhead line branches off toward Persley substation located north of the River Don, Aberdeen. The new South Formartine Substation would connect into the existing network in this region.



## Why the substation is required

### 1. Increasing network capacity

- Supports the significant rise in electricity generation, particularly from offshore wind
- Enables bulk power across the north east transmission network and provides network security to the Aberdeen grid.

### 2. Improving system reliability and resilience

- A double busbar is proposed for the South Formartine substation. This would enable maintenance of the substation without shutting down the entire system.
- Enhances fault management and reduces the risk of widespread outages

### 3. Modernising existing infrastructure

- Replaces ageing 275/132kV Super Grid Transformers at Persley Substation in Aberdeen City.
- Aligns the network with future 400kV system requirements

### 4. Supporting future network growth

- Provides capacity for additional connections beyond current projects
- Future-proofs the network for continued expansion of renewable energy

### 5. Supporting national energy and climate goals

- Enables transmission of low-carbon electricity across Scotland and beyond
- Plays a key role in achieving UK and Scottish clean power targets

## What is a substation?

An essential component in the UK's energy network, substations connect sources of generation, such as wind farms and power stations. They connect overhead and underground cables and can also connect nearby utility systems. The purpose of a substation is to manage the electricity flowing within the network. This can include connecting and disconnecting certain circuits to direct the flow of energy, increasing or decreasing voltage (e.g. from 132kV up to 275kV or from 400kV down to 275kV), managing the frequency of the electricity, and increasing the efficiency and reliability of the power supply.



# Beyond 2030: Powering Scotland's future

## Investing in the next generation of transmission infrastructure.

In March 2024, the independent National Energy System Operator (NESO) published its 'Beyond 2030' report, which included the next phase of ScotWind (offshore wind projects) and confirmed the need for several new, replacement and upgraded transmission infrastructure projects in the north of Scotland.

These projects are essential to:

- Enable additional ScotWind (offshore wind projects) connections.
- Support the deployment of homegrown, low-carbon electricity.
- Strengthen the UK's energy security and progress toward clean power.

## Investing in communities

The Beyond 2030 projects represent a potential investment of over £5 billion in the north of Scotland by 2035. We recognise the importance of ensuring that this investment delivers tangible benefits for local communities, including:

- Job creation and skills development, particularly in rural and coastal areas.
- Community benefit funds linked to major infrastructure projects.
- Opportunities for local suppliers and contractors to participate in delivery.
- Environmental stewardship, including mitigation of visual and ecological impacts.



### March 2024

NESO published transitional Centralised Strategic Network Plan (tCSNP2) (Beyond 2030)



### December 2024

Ofgem approves early stage development funding



### July 2025

Ofgem publishes Clean Power 2030



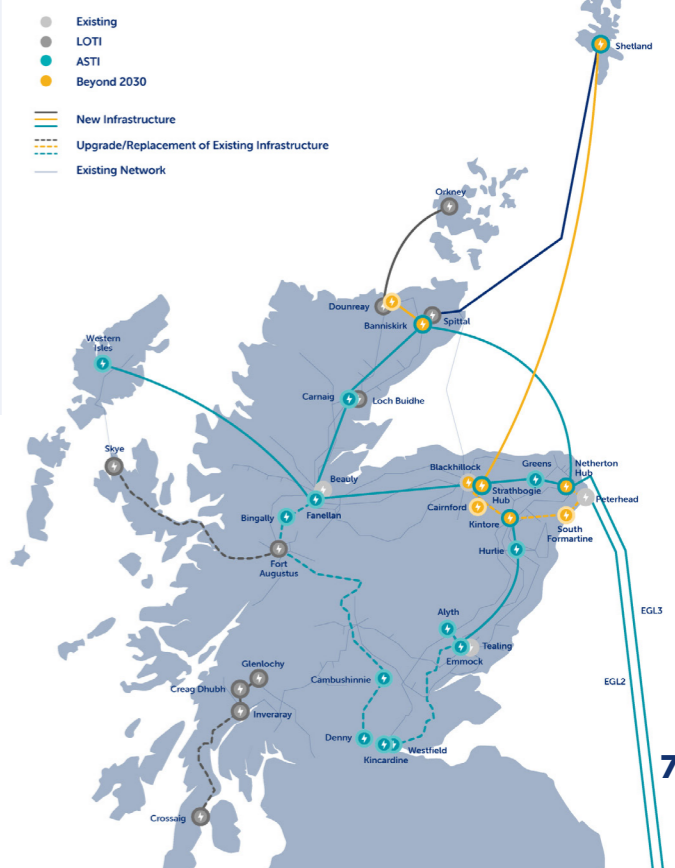
### 2026

Further Ofgem decisions expected to support Clean Power 2030



You can read the NESO Beyond 2030 report here

## PATHWAY TO 2030 & BEYOND



# Our site selection process

Our site selection process makes sure the design, consenting, construction and operation of our projects are undertaken in a manner, which on balance, causes the least disturbance to the environment and the local community, while ensuring the solution being taken forward is economically and technically practical.

## Overview of site selection process so far

The site selection process began with an initial review of potential sites for development of the proposed substation within a 5km radius of the Persley Tee point. However, due to the residential areas, community facilities, existing infrastructure and energy developments, the search area was increased to a 10km radius of the Persley Tee to ensure we avoided sensitive locations, minimise environmental impacts and maximise technical feasibility. Environmental constraints were reviewed in the 10km search area, and we identified seven potential sites.

## Discounted options

Following assessment, four sites were discounted for the following reasons:

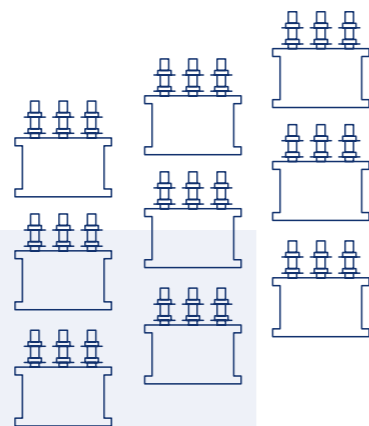
**Site 2** - heavily constrained by its proximity to the town of Ellon and potential for impact to residential receptors, in addition to having drainage issues with potential for flooding.

**Site 4** - constrained due to the presence of an archaeological feature (a mound) and the Tillery Burn watercourse, in addition to its potential for impact to residential receptors and unsuitability for construction.

**Site 5** - constrained due to the limited access options and feasibility of construction, in addition to the potential for traffic and transport issues within Newmachar.

**Site 6** - constrained due to the potential for landscape and visual impacts to local residential receptors and overlap with an existing windfarm application, with greater complexity than the other site options. In addition, Site 6 supports ecological potential with various habitats present, alongside a cultural heritage constraint due to its proximity to Tolquhon Castle.

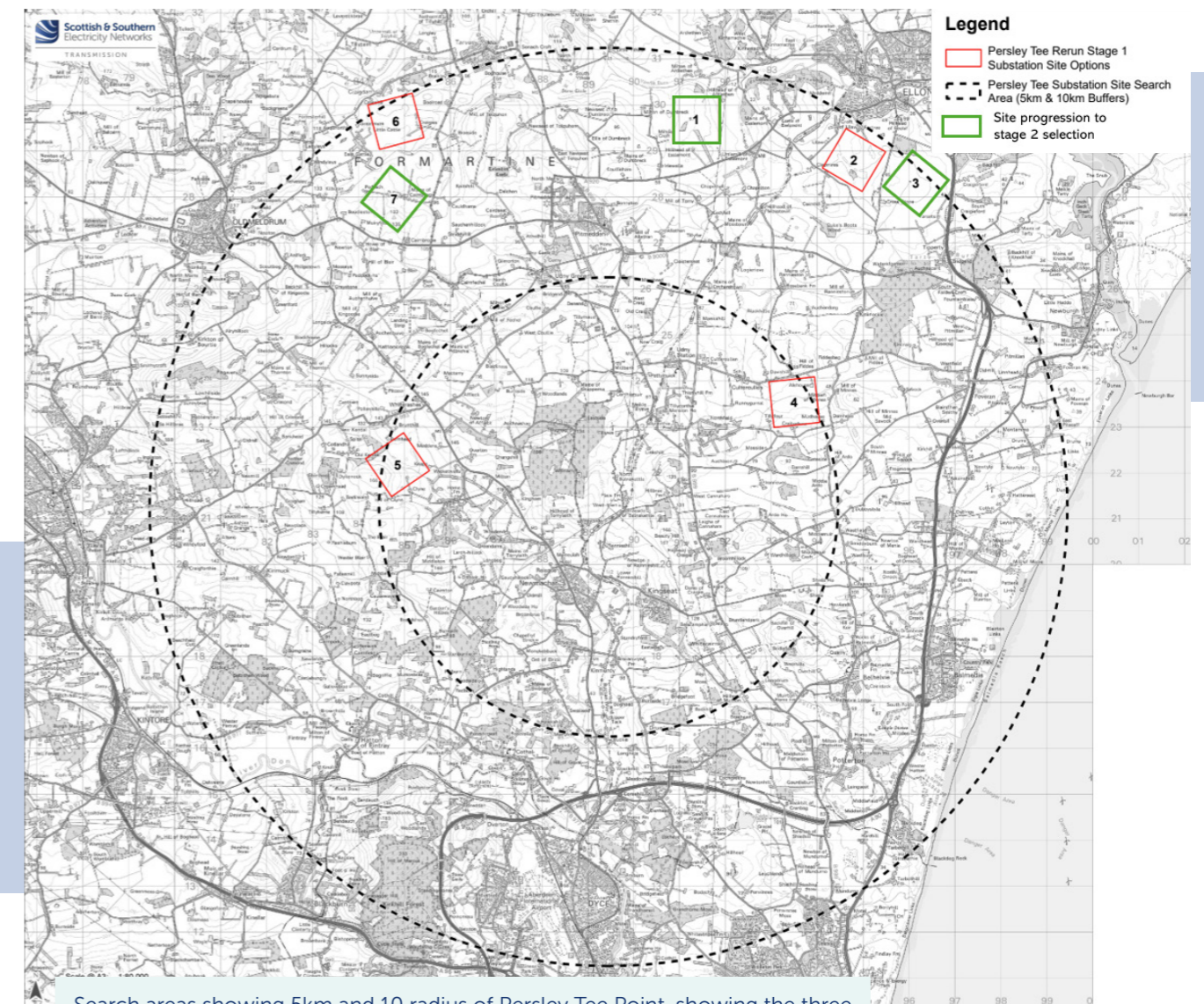
**Sites 1, 3 and 7 were shortlisted for further assessment.**



8

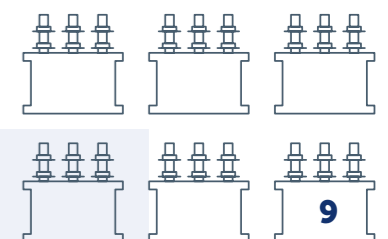
# Site options

The map and figures on this page show the three shortlisted site options (Sites 1, 3 and 7) highlighted in green within the wider search area.



Search areas showing 5km and 10 radius of Persley Tee Point, showing the three sites being progressed (green), and the sites we are not progressing with (red)

Please note the squares shown above are not indicative of size and only for demonstrative purposes.



9

## Options under consideration

We are now looking for the best possible site from our short-list—one that avoids, as much as possible, any physical, environmental, or amenity issues. We are aiming for locations that will be acceptable to our stakeholders and that are viable from both engineering and environmental perspectives.

The three remaining site options are undergoing more detailed assessment, supported by ongoing engineering and environmental surveys, as well as engagement with landowners. We've summarised some of the key environmental and engineering aspects of each site:

Site	Environmental Summary	Engineering Summary
<b>1</b>	Potential for landscape and visual impacts on residential receptors in proximity. Surrounding woodland located at a distance where impact would not be anticipated, no irreplaceable habitats identified, minimal ecological constraints identified.	This site is located adjacent to existing overhead lines (275kV at 500m and 11kV at 740m), contains a gas pipelines (250m from the site centre) and steeply undulating landform which may require significant earthworks.
<b>3</b>	Potential for landscape and visual impacts on residential receptors in proximity (Ellon). Small tree line present, no irreplaceable habitats identified.	This site lies in close proximity to existing overhead lines (275kV at 4.27km and 11kV lines at 900m), with a gas pipeline in proximity (1.4km from the centre) and undulating landform.
<b>7</b>	Watercourses, tree lines and built structures present (not in use as residential properties): these habitats may present ecological and ornithological potential.	This site is located in proximity to existing overhead lines (11kV line at 200m, with 275kV lines at 6.37km), with a gas pipeline in the locale (1.4km from the centre). The site presents a significant terrain differential and a sensitive noise profile.

### Next steps - site selection

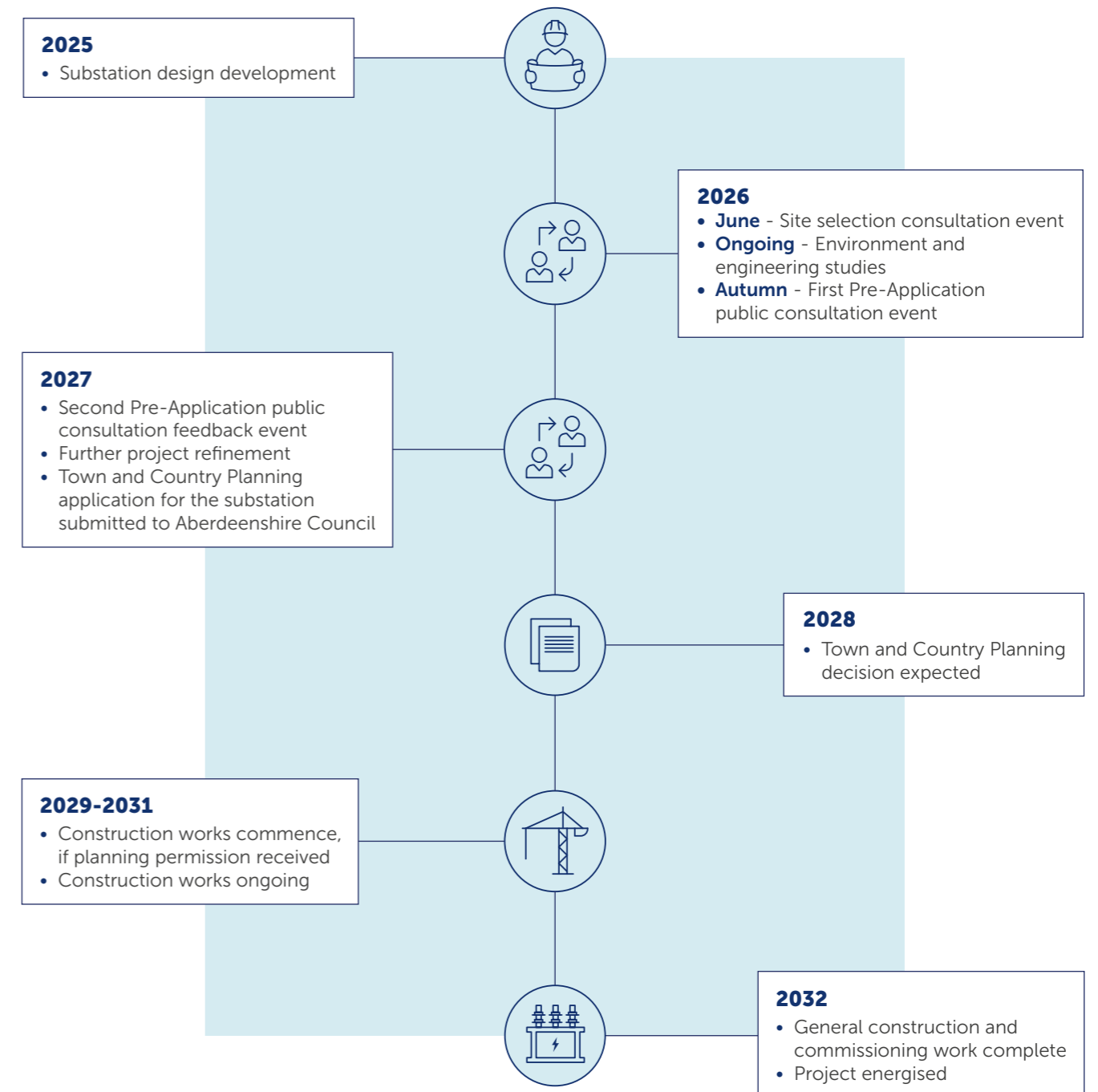
Over the summer months we will be undertaking environmental surveys at the three shortlisted sites to support the selection of the proposed site. We are also seeking feedback from the public and relevant stakeholders. Your comments really matter—they help us make sure we are moving forward with the best plan. We listen to what you have to say and make changes where possible to reflect your input. Pre-application consultation events will be held later in the year to share insights from this round of events, along with additional design detail, ahead of submitting a planning application to Aberdeenshire Council.

### Connecting the site to our existing network

Now we have our three sites narrowed down, we are assessing how these will connect to our existing network. This assessment is at a very early stage as we consider technical, engineering and environmental factors to identify routes for each site. Our overall aim of route selection is to support the substation site selection, with a more detailed selection process to be undertaken once this is selected. These will be presented at future consultation events alongside the updated substation site options.

# Project timeline

This timeline shows the main stages of the project from design development through consent, construction and commissioning.



\*Please note that dates are indicative and subject to change.

# Environmental considerations

We consider environmental factors alongside engineering and cost when comparing sites. This helps us avoid or reduce potential impacts wherever possible.

We will use the following factors to compare sites:

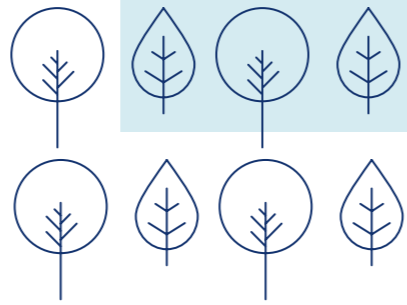
Environmental surveys and detailed appraisals will be undertaken as we move through the stages of site selection to proposed site and consenting. This includes assessing landscape, visual and amenity; ecology, ornithology, geology, hydrogeology, hydrology and cultural heritage of the potential site. Once the proposed site is confirmed we will undertake further survey and detailed environmental assessments and we hold formal pre-application consultation events.

## Ecology and Ornithology

Protected species and sensitive habitats could be present within the project area. However we have selected the short list of potential site options to avoid environmental designations and known sensitive habitats. We will assess the risk to species and habitats as we move through the stages of site selection, aiming to select a site alignment with the least risk to the environment overall. Achieving a Biodiversity Net Gain for the site will be an overall objective of the proposed site.

## Landscape and visual amenity

We aim to position sites in locations that minimises the effect on landscapes and visual amenity. The process being followed for the South Formartine Substation will consider the visual impact of the Stage 2 potential site alongside landscape designations, landscape character and residential proximity to the project location.



## Cultural heritage

Scheduled, non-scheduled cultural heritage and archaeological features will be mapped and risk assessed through the stages of site selection, with detailed studies and survey undertaken on the proposed site once confirmed. The substation will be designed and constructed to ensure features of cultural heritage value are avoided, where possible. Where this is not possible, further site assessments will be conducted in consultation with Aberdeenshire Council and Historic Environment Scotland.

## Geology, hydrology and hydrogeology

The geological and hydrological sensitivities of each site will be risk assessed throughout the stages of site and further refined once a proposed site is selected. The access points will be selected to minimise effects as far as possible.



# Engineering considerations

Alongside environmental factors, we also assess engineering requirements to make sure any proposed site can be built safely and connected efficiently to the existing network.

Key factors for site selection include access to transmission circuits, land availability, suitable ground conditions, and balanced environmental and community impacts. Ideally the South Formartine substation will be sited near to existing infrastructure to ease integration, support future wind farm connections, and accommodate any High Voltage Direct Current (HVDC) connections, reducing the need for further infrastructure and land take. By positioning it as close as possible to existing overhead lines, further works to connect overhead lines are minimised, although may still be required depending on which site is selected.

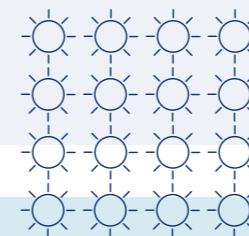
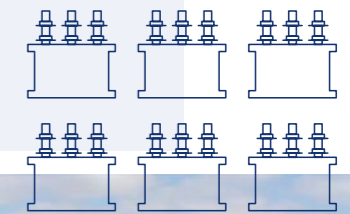
## Technology choice

At this stage of the project we are assessing if we will be using Air Insulated Switchgear (AIS) or Gas Insulated Switchgear (GIS).



### GIS

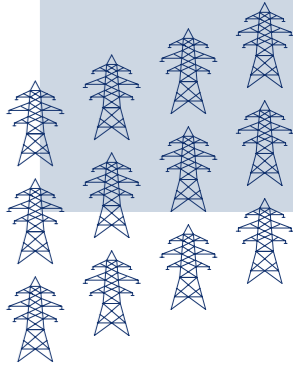
A GIS substation is constructed with switchgear with gaseous reliant components which allows operation and safety clearances to be reduced compared to AIS.



### AIS

An AIS substation is constructed with switchgear which relies on open air components, which can require large clearance areas for operation and safety.





# The Town and Country Planning Process

Here we outline the consenting route for the substation and explain when and how you can take part in the formal planning process.

The legislation that enables the planning of the new South Formartine 400/132kV substation is the **Town and Country Planning (Scotland) Act 1997**.

## Engaging the right people

Local Planning Authorities determine the outcome of any applications made under the Town and Country Planning Act and establish the planning pathway our substation projects must take, including which consents are required. This involves confirming whether projects require Environmental Impact Assessments (EIAs) under the relevant legislation. If our project is deemed non-EIA (due to its scale or potential environmental impacts), a voluntary Environmental Appraisal may be produced by us to support the consent application. These assessments would be made publicly available once submitted in support of a planning application.

The substation proposed as part of this project is classed as "National Development" under the Town and Country Planning process; therefore, pre-application consultation is required with the public and interested parties. There will be further opportunities to provide feedback to us during the formal pre-application consultation process. Any comments made to us as the Applicant are not representations to Aberdeenshire Council as the planning authority. There will be opportunity to make formal representations to the planning authority following the submission of the planning application.



# Other projects in the local area

As the transmission operator in the north of Scotland, we need to maintain and invest in the high voltage electricity transmission network in our area to provide a safe and reliable electricity supply to our communities.

The proposed South Formartine 400/132kV substation forms part of the wider Peterhead to Kintore upgrade project (PKUP) aimed at upgrading the regional transmission network in the north east of Scotland. A summary of each project is available below.

## Peterhead to Persley to Kintore Overhead Line upgrade

We are proposing to upgrade the existing overhead line from Peterhead to Persley to Kintore. The project scope is split into two sections:

- reconductoring and re-insulating 51km of the 275kV overhead line from Peterhead to Kintore, preparing it for operation at 400kV.
- reconductoring and re-insulating a 12km section from the Persley Tee to the existing Persley substation while continuing to operate at 275kV.

Initially, the overhead line will continue to operate at 275kV until substation works are complete in late 2032, at which point 400kV operation between Peterhead and Kintore will commence, and the circuits from Persley Tee to Persley will be downgraded to 132kV.

Find out more information on the project here: [ssen-transmission.co.uk/pkup](https://ssen-transmission.co.uk/pkup).

## Peterhead upgrades

The Peterhead upgrade project involves the installation of a new 400kV/275kV Supergrid Transformer building to connect to the existing Peterhead 400kV substation. The project will also divert the existing 275kV overhead line between Peterhead - Persley - Kintore into the Peterhead 400kV substation and uprate the voltage.

## Kintore substation upgrade

Kintore substation is currently undergoing essential upgrade works to replace ageing equipment. The Kintore substation upgrade project that is proposed as part of PKUP involves further upgrades of the existing 400kV substation building to accommodate new 400kV busbar bays. The upgrade will allow the existing Peterhead – Kintore overhead line to connect into Kintore once upgraded to 400kV.

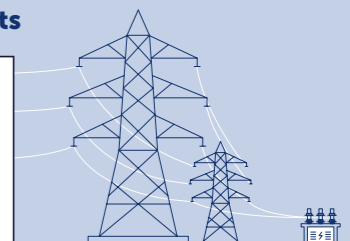
## Local renewable developments

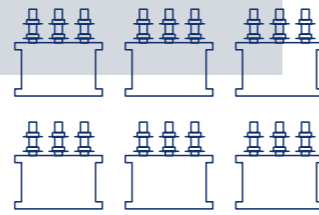
We know that local stakeholders are keen to understand the full extent of renewable developments being proposed in their local area. Applications to connect to the transmission network in our licence area are made to NESO and undergo a lengthy process of assessment before we begin to develop a network connection for those developments.

We aim to be transparent about the renewable developments looking to connect to our network but are not permitted to disclose any details of these developments until they are in the public domain.

A list of projects that hold contracts for Transmission Entry Capacity (TEC) with National Grid, the Electricity System Owner, is available from their website: [Transmission Entry Capacity \(TEC\) register](https://www.neso.co.uk/Transmission-Entry-Capacity-TEC-register) | [ESO \(nationalgrideso.com\)](https://www.neso.co.uk)

## Search Projects





# Lasting legacy

We are committed to leaving a lasting, positive legacy in the communities where we operate. Alongside delivering new infrastructure, we invest in local priorities through community benefit funding, volunteering and outreach, and ongoing engagement with community groups across the region.

Recently, we have volunteered with Aberdeenshire North Food bank and supported improvements at New Deer Public Hall.

## Housing

Through our housing legacy initiative, we are helping to increase local housing supply while accommodating the workforce delivering major grid upgrades. In Aberdeenshire, our agreement with The Springfield Group supports 293 homes overall, including 69 at a new development in Turriff, alongside our wider commitment to deliver over 300 legacy homes across five sites.

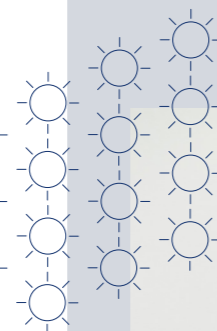
Homes will initially support the construction workforce and will then be released for local use, with a mix of affordable, social and private housing for sale and rent.

## Economy

Our Pathway to 2030 investment programme is expected to deliver significant benefits for Aberdeenshire, including up to £1bn of local spend and up to £820m in total Gross Added Value (GVA). The programme is also forecast to support around 1,140 jobs and could boost the local construction sector by up to 20% annually. We recruited 183 staff locally in the last year and expect a further 150 new staff in the area over the next five years.

## Skills

We are working with our contractors and supply chain to grow local skills through training, apprenticeships, graduate routes and 'earn as you learn' roles. In Aberdeenshire, this includes our learning partnership with Peterhead Academy (launched in 2025), linking pupils to industry experience connected to EGL2, and Pittodrie Pathways at Fraserburgh Academy with Aberdeen Football Club Community Trust. Across our business, we recruited 183 staff locally in the last year (including 38 'earn as you learn' roles), welcomed our largest-ever intake of 59 graduates, and have committed to creating 600 'earn as you learn' roles by 2030.



# Next steps

We value community and stakeholder feedback. We are committed to delivering a meaningful consultation process that actively seeks the views of everyone affected by our plans. That means making our plans clear and easily accessible, so that you can give us input throughout each stage of the development process.

## The feedback period

- We will accept feedback from now until **24 July 2026**.

## How to provide feedback

- Submit your feedback online by scanning the QR code on this page or via the form on our project webpage: [ssen-transmission.co.uk/south-formartine](https://ssen-transmission.co.uk/south-formartine)
- Email the feedback form to our Community Liaison Manager
- Or write to us enclosing the feedback form at the back of this booklet.

## What we are seeking views on

We want you to share your thoughts and opinions on our plans, where you think we can make improvements, concerns about the impact of our work and any changes or refinements we can make. We'll be actively looking to mitigate the impacts of the South Formartine 400/132kV Substation project as much as possible over the coming months, but it would be helpful to understand what you believe we should be doing to help minimise these impacts and if there are any opportunities to deliver a local community benefit you would like us to consider.

## Our Community Liaison team

Each project has a dedicated Community Liaison Manager who works closely with community members to make sure they are well informed of our proposals and that their views, concerns, questions or suggestions are put to our project teams. Throughout the life of our projects, you will hear from us regularly. We aim to establish strong working relationships by being accessible to key local stakeholders such as community councils, residents' associations and development trusts, and regularly engage with interested individuals.

## Community Liaison Manager

**Catherine Cowie**

SSEN Transmission, Unit 11, Prime Four Business Park, Kingswells, Aberdeen AB15 8NY

[pkup@sse.com](mailto:pkup@sse.com)

You can also follow us on social media:

@sentransmission SSENTransmission

SSEN Transmission

## Additional information:



The best way to keep up to date is to sign up to project updates via the project webpage:

[ssen-transmission.co.uk/south-formartine](https://ssen-transmission.co.uk/south-formartine)



To support everyone online, we provide accessibility and language options on our website through 'Recite Me'. The accessibility and language support options provided by 'Recite Me' include text-to-speech functionality, fully customisable styling features, reading aids, and a translation tool with over 100 languages, including 35 text-to-speech.

Please select "Accessibility" on our website to try out our inclusive toolbar."

# Your feedback

Thank you for taking the time to read this consultation booklet. To record your views and improve the effectiveness of our consultation, please complete this short feedback form.

Please complete in BLOCK CAPITALS. (Please tick one box per question only)

**Q1. What are your views on the proposed site options for the South Formartine substation?**

Site 1

Site 3

Site 7

**Q2. Do you have a preference for the location of the South Formartine substation? If so, please select below.**

Site 1    Site 3    Site 7

**Q3. Are there any environmental features that you consider important and that should be brought to the attention of the project team?**

Yes    No    Unsure

Comments:

**Q4. Are there any suggestions for social or environmental community benefit opportunities in the area you'd like us to consider as the project progresses, or any local initiatives you'd like us to support?**

Comments:

**Q5. What are your views on how information, such as the need for the project, was presented in the booklet, is there anything we could have done differently?**

Comments:

**Q6. Do you feel sufficient information has been provided to enable you to understand what is being proposed?**

Yes    No    Unsure

Comments:



**Q7. Are there any other comments you'd like to make?**

Comments:

**Full name:** ..... **Email:** .....

**Telephone:** ..... **Address:** .....

We would like to send you relevant communications via email such as invitations to stakeholder events, surveys, updates on projects, services and future developments from the Scottish and Southern Electricity Networks group listed below. If you are happy to receive email updates please opt in by ticking the box below. You can unsubscribe at any time by contacting us at stakeholder.admin@sse.com or by clicking on the unsubscribe link that will be at the end of each of our emails.



**If you would like to be kept informed of progress on the project, please tick this box**

**Thank you for taking the time to complete this feedback form.  
Please submit your completed form by one of the methods below:**

**Post:** SSEN Transmission, Prime Four Business Park, Kingswells Causeway, AB15 8PU

**Email:** pkup@sse.com

**Online:** [www.ssen-transmission.co.uk/south-formartine](http://www.ssen-transmission.co.uk/south-formartine)

For information on how we collect and process your data please see our privacy notice available at today's event. This can also be obtained online at: [ssen-transmission.co.uk/privacy](http://ssen-transmission.co.uk/privacy)

Comments forms and all the information from today's event will also be available to download from the project website.

We intend to use Artificial Intelligence (AI) to assist our experienced teams in the analysis of your feedback, so we can categorise key points raised more quickly. You can learn more about how we're utilising AI at: [ssen-transmission.co.uk/AIFAQ](http://ssen-transmission.co.uk/AIFAQ)

Any information given on the feedback form can be used and published anonymously as part of Scottish and Southern Electricity Networks consultation report. By completing this feedback form you consent to Scottish and Southern Electricity Networks using feedback for this purpose.

Scottish and Southern Electricity Networks is a trading name of: Scottish and Southern Energy Power Distribution Limited Registered in Scotland No. SC213459; Scottish Hydro Electric Transmission plc Registered in Scotland No. SC213461; Scottish Hydro Electric Power Distribution plc Registered in Scotland No. SC213460; (all having their Registered Offices at Inveralmond House 200 Dunkeld Road Perth PH1 3AQ); and Southern Electric Power Distribution plc Registered in England & Wales No. 04094290 having its Registered Office at Number One Forbury Place, 43 Forbury Road, Reading, Berkshire, RG1 3JH which are members of the SSE Group.

