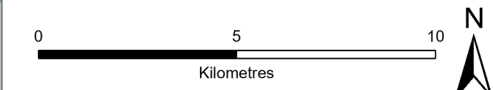


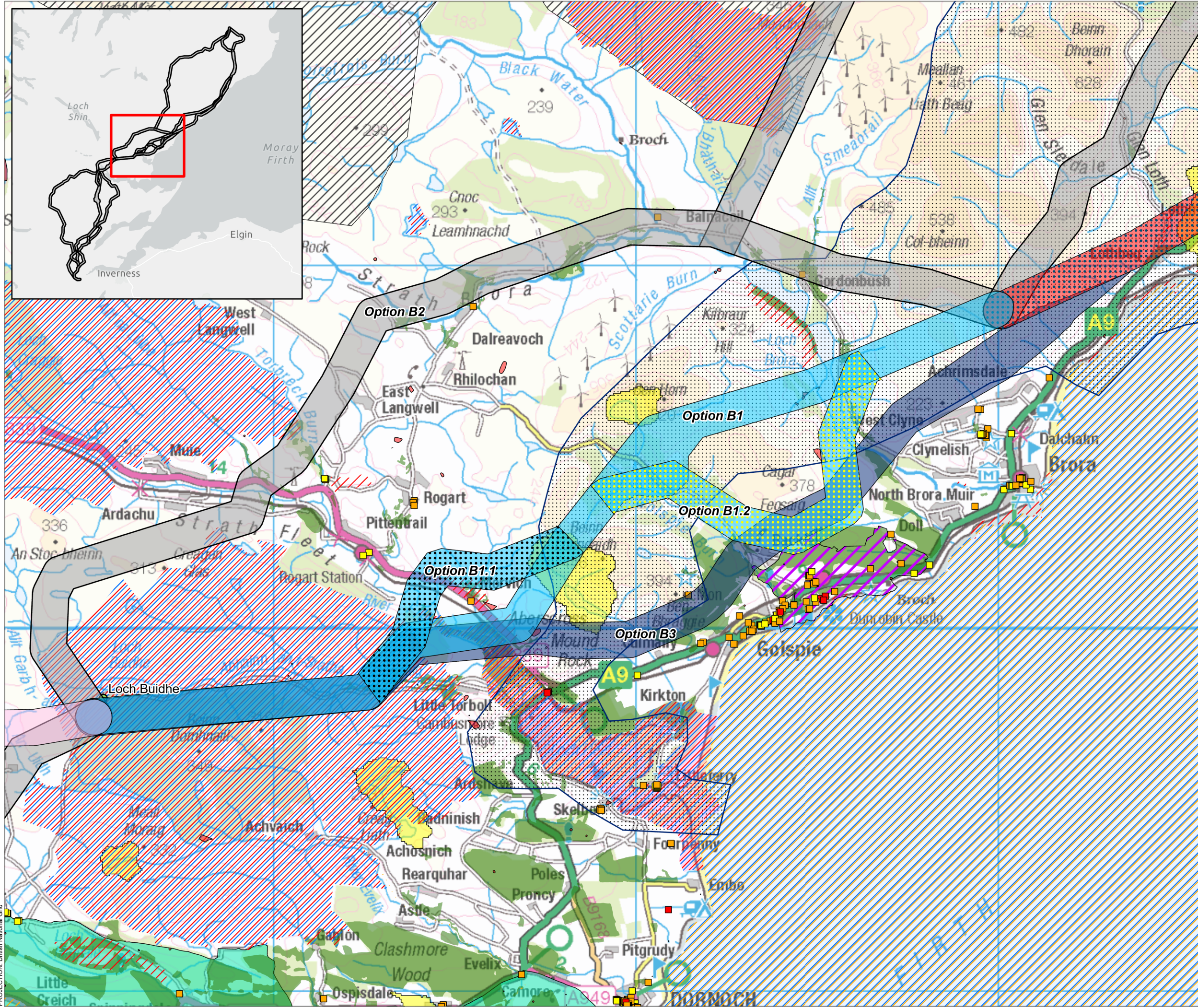
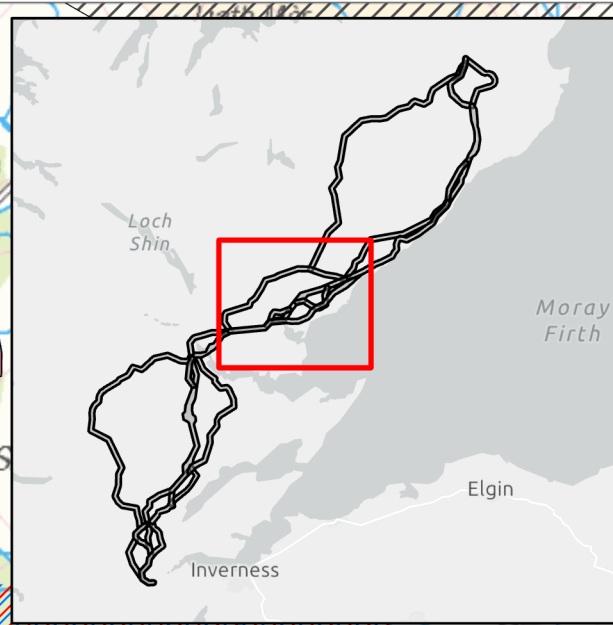
- Spittal Substation
- Spittal to Loch Buidhe to Beaulieu Preferred Routes
- A1
- A1.1
- A1.3
- A1.4
- A1.5
- B1
- B1.2
- B3
- Spittal to Loch Buidhe to Beaulieu Non-preferred Routes
- Constraints:
- Category A Listed Building
- Category B Listed Building
- Category C Listed Building
- RSPB Reserve
- Scheduled Monument
- Garden and Designed Landscape
- Special Landscape Area
- Site of Special Scientific Interest
- Special Areas of Conservation
- Special Protection Area
- Ramsar Site
- Ancient Woodland Inventory
- Wild Land
- Drinking Water Protected Areas - Surface Water



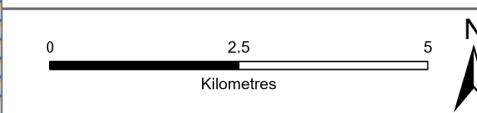
SCALE: See Scale Bar	VERSION: A02
SIZE: A3	DRAWN: DN
PROJECT: 0629430	CHECKED: CC
DATE: 06/02/2023	APPROVED: KG

Spittal to Loch Buidhe to Beaulieu Preferred Route and Constraints Section A





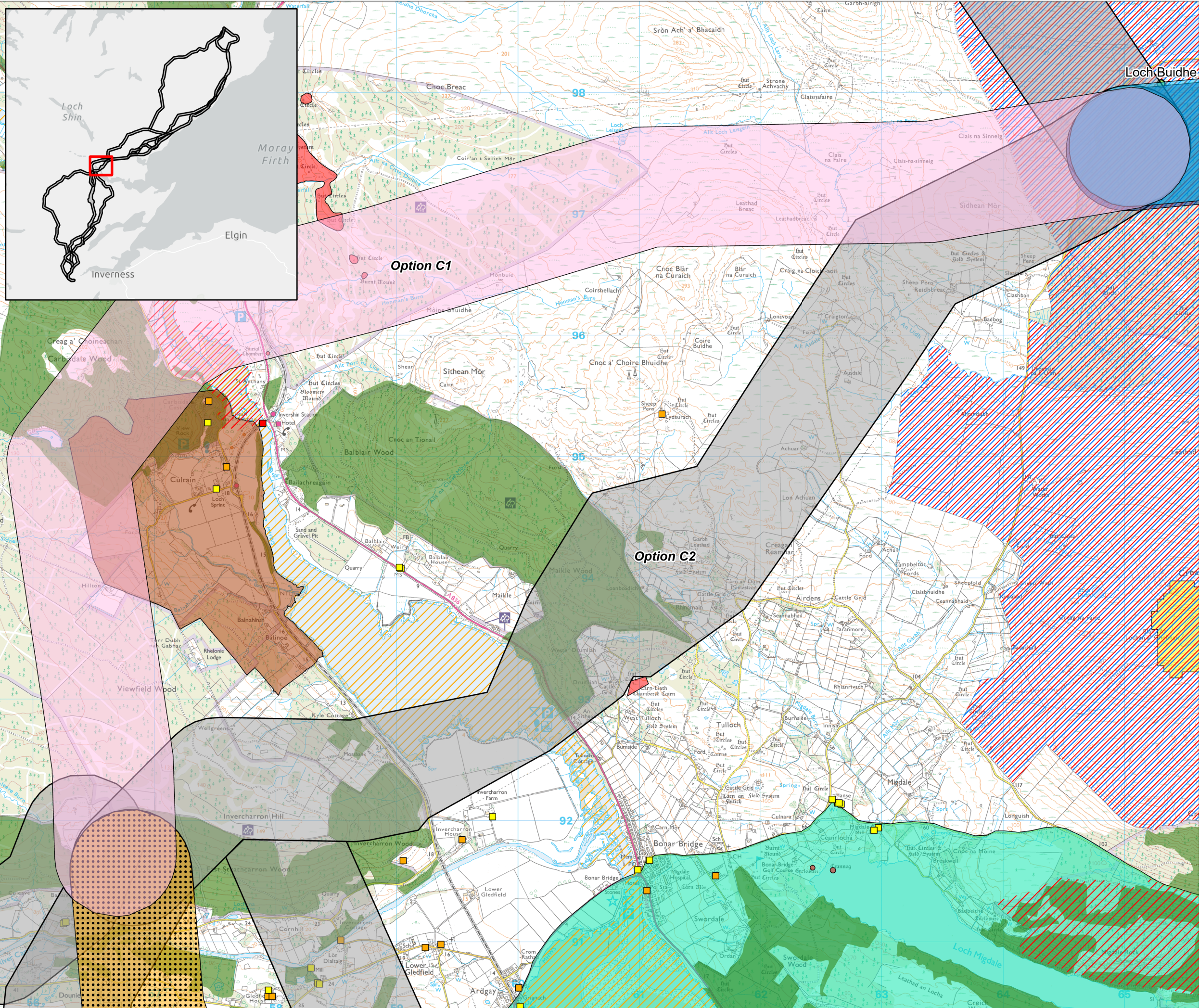
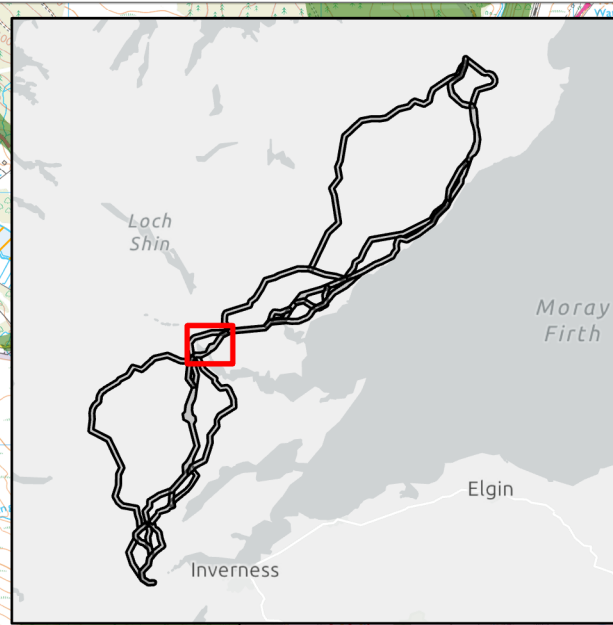
- Loch Buidhe Substation
- Spittal to Loch Buidhe to Beaulieu Preferred Routes
- A1.5
- B1
- B1.1
- B1.2
- B3
- C1
- Spittal to Loch Buidhe to Beaulieu Non-preferred Routes
- Constraints:
- Category A Listed Building
- Category B Listed Building
- Category C Listed Building
- Scheduled Monument
- Garden and Designed Landscape
- Special Landscape Area
- Site of Special Scientific Interest
- Special Areas of Conservation
- Special Protection Area
- Ramsar Site
- Ancient Woodland Inventory
- Wild Land
- Drinking Water Protected Areas - Surface Water
- National Scenic Area



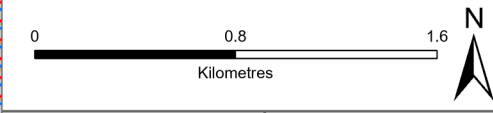
SCALE: See Scale Bar	VERSION: A02
SIZE: A3	DRAWN: DN
PROJECT: 0629430	CHECKED: CC
DATE: 06/02/2023	APPROVED: KG

Spittal to Loch Buidhe to Beaulieu Preferred Route and Constraints Section B





- Loch Buidhe Substation
- Spittal to Loch Buidhe to Beaulieu Preferred Routes
- B1
- B3
- C1
- D1.1
- Spittal to Loch Buidhe to Beaulieu Non-preferred Routes
- Constraints:
- Category A Listed Building
- Category B Listed Building
- Category C Listed Building
- Scheduled Monument
- Site of Special Scientific Interest
- Special Areas of Conservation
- Special Protection Area
- Battlefields Inventory (HES)
- Ancient Woodland Inventory
- Drinking Water Protected Areas - Surface Water
- National Scenic Area

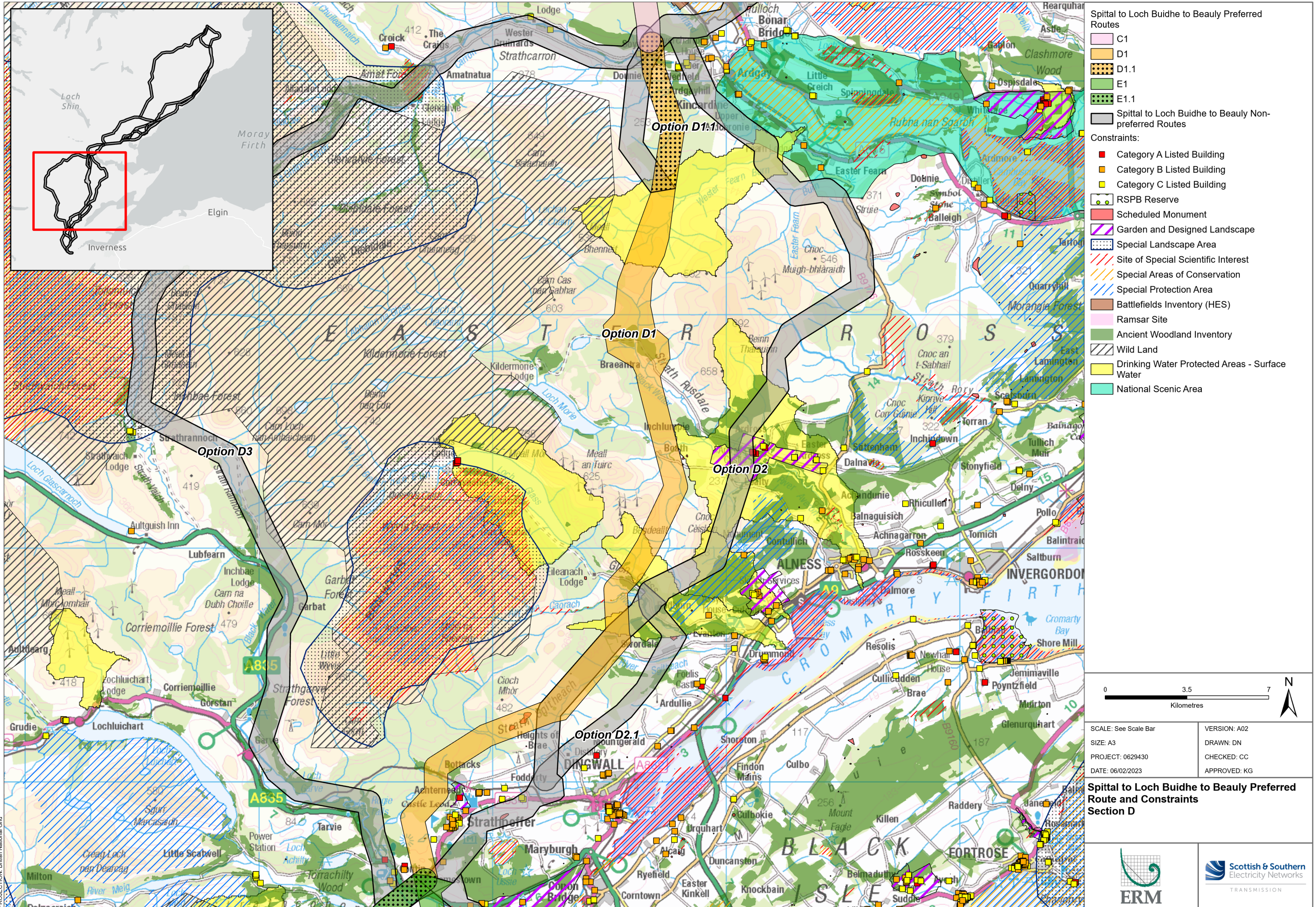


SCALE: See Scale Bar	VERSION: A02
SIZE: A3	DRAWN: DN
PROJECT: 0629430	CHECKED: CC
DATE: 06/02/2023	APPROVED: KG

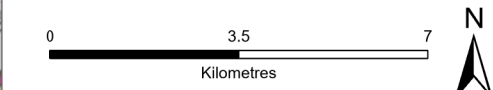
Spittal to Loch Buidhe to Beaulieu Preferred Route and Constraints Section C



PROJECTION: British National Grid

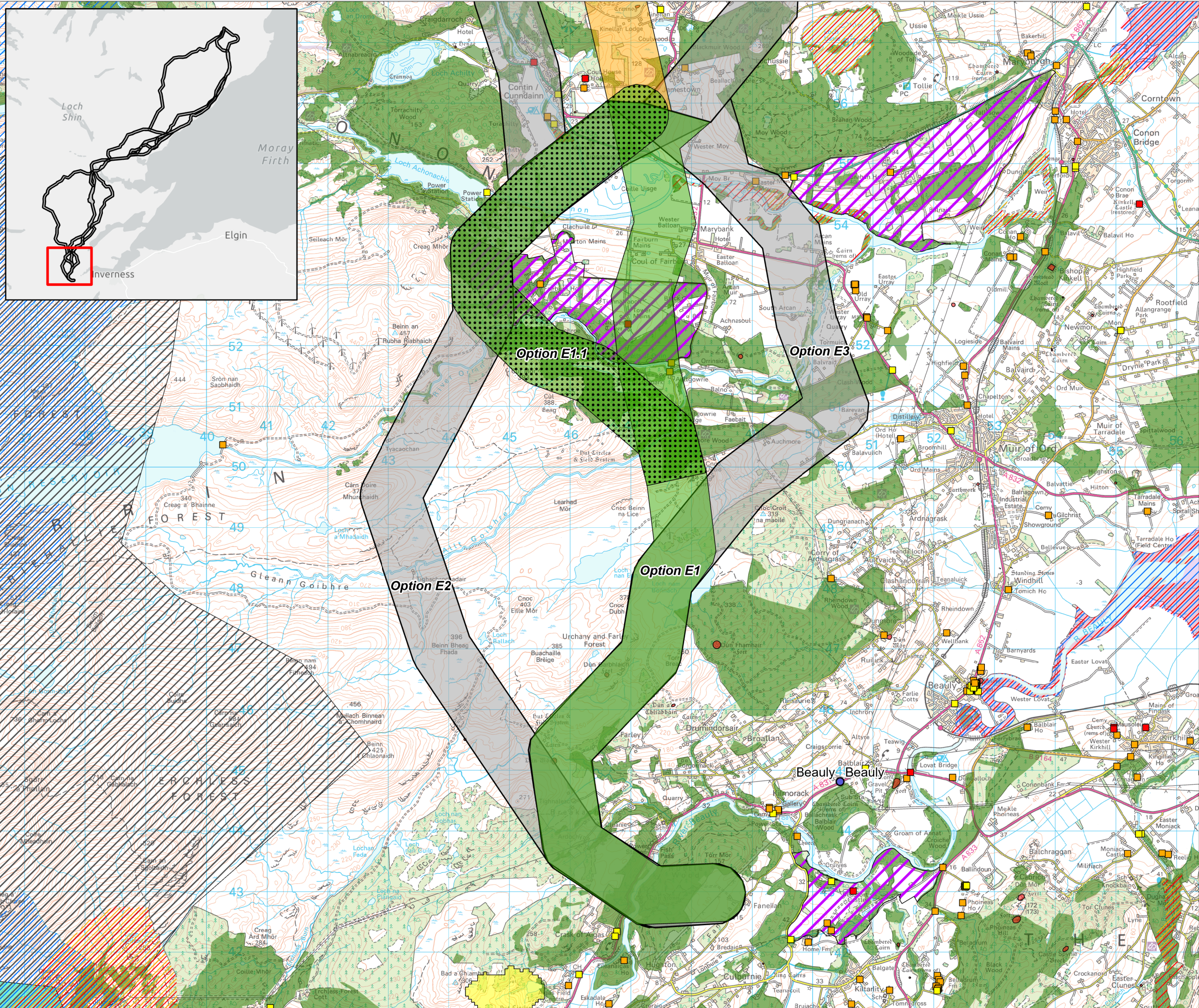


- Spittal to Loch Buidhe to Beaulieu Preferred Routes**
- C1
 - D1
 - D1.1
 - E1
 - E1.1
 - Spittal to Loch Buidhe to Beaulieu Non-preferred Routes
- Constraints:**
- Category A Listed Building
 - Category B Listed Building
 - Category C Listed Building
 - RSPB Reserve
 - Scheduled Monument
 - Garden and Designed Landscape
 - Special Landscape Area
 - Site of Special Scientific Interest
 - Special Areas of Conservation
 - Special Protection Area
 - Battlefields Inventory (HES)
 - Ramsar Site
 - Ancient Woodland Inventory
 - Wild Land
 - Drinking Water Protected Areas - Surface Water
 - National Scenic Area

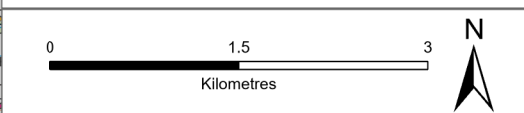


SCALE: See Scale Bar	VERSION: A02
SIZE: A3	DRAWN: DN
PROJECT: 0629430	CHECKED: CC
DATE: 06/02/2023	APPROVED: KG

Spittal to Loch Buidhe to Beaulieu Preferred Route and Constraints Section D



- Beaulieu Substation
- Spittal to Loch Buidhe to Beaulieu Preferred Routes
 - D1
 - E1
 - E1.1
- Spittal to Loch Buidhe to Beaulieu Non-preferred Routes
- Constraints:
 - Category A Listed Building
 - Category B Listed Building
 - Category C Listed Building
 - Scheduled Monument
 - Garden and Designed Landscape
 - Site of Special Scientific Interest
 - Special Areas of Conservation
 - Special Protection Area
 - Ramsar Site
 - Ancient Woodland Inventory
 - Wild Land
 - Drinking Water Protected Areas - Surface Water
 - National Scenic Area



SCALE: See Scale Bar	VERSION: A02
SIZE: A3	DRAWN: DN
PROJECT: 0629430	CHECKED: CC
DATE: 06/02/2023	APPROVED: KG

Spittal to Loch Buidhe to Beaulieu Preferred Route and Constraints Section E



PROJECTION: British National Grid