

Development for which Section 37 consent is sought

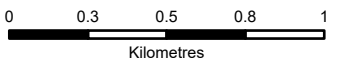
- Tower Location
- Alignment Section B
- Special Arrangement
- Temporary Diversion During Construction of Special Arrangement

Ancillary Development for which deemed planning permission is sought

- Temporary Access Track - Cut/Fill
- Temporary Access Track - Floating
- Permanent Access Track - Floating
- Permanent Access Track - Cut/Fill
- Existing Access Tracks - Upgrade Required
- Equipotential Zone (EPZ) (Pulling Position)
- Temporary Tower Compound Area - SOUTH

Limit of Deviation

- Limit of Deviation (LoD)

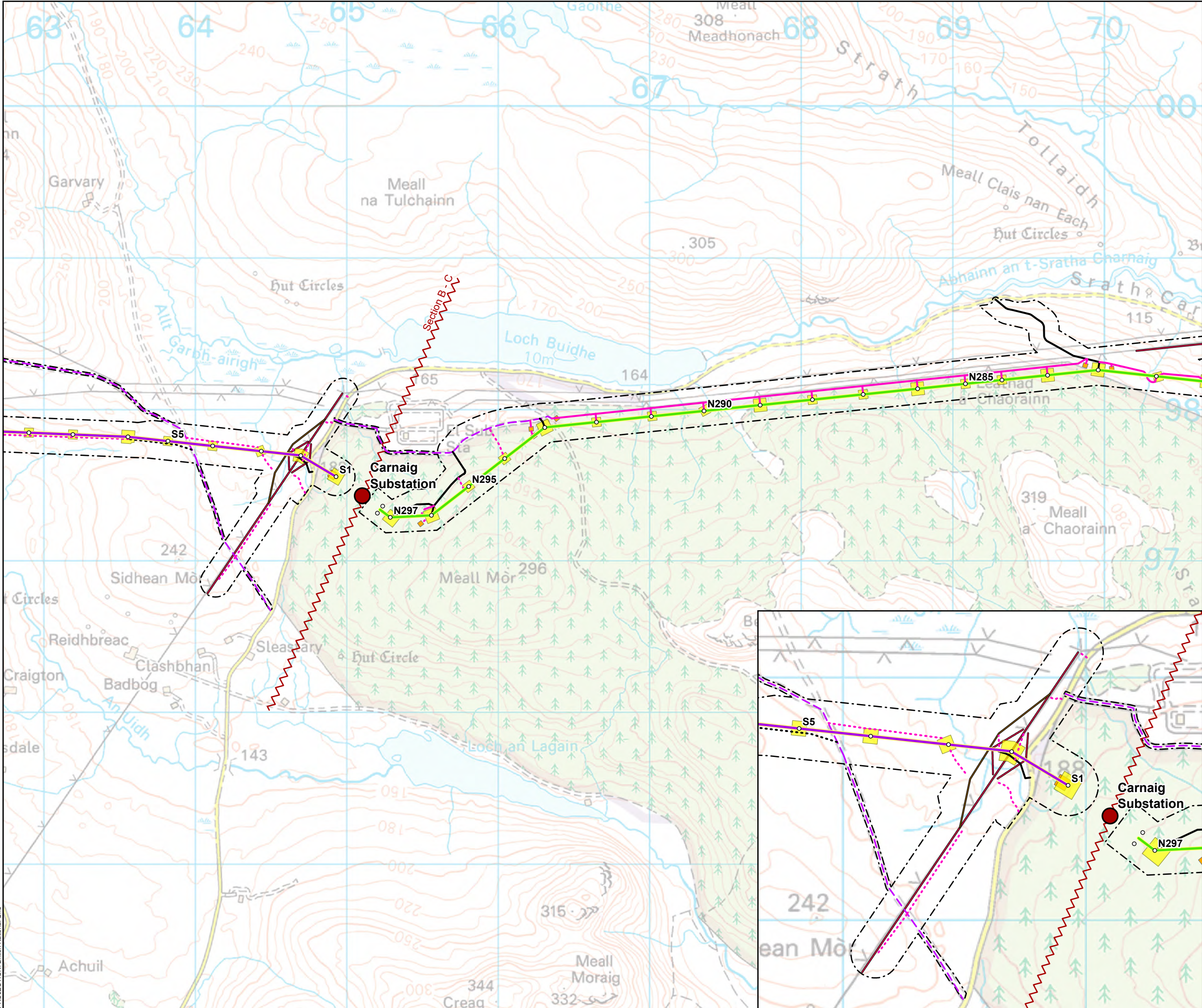


SCALE: See Scale Bar
SIZE: A3
PROJECT: 0652629
DATE: 11/08/2025

VERSION: A01
DRAWN: CI
CHECKED: BMG
APPROVED: KG

Figure 3.1 - 16
Spittal - Loch Buidhe - Beauly 400 kV OHL
Connection
Project Description





Development for which Section 37 consent is sought

- Tower Location
- Alignment Section B
- Alignment Section C
- Special Arrangement
- Temporary Diversion During Construction of Special Arrangement

Ancillary Development for which deemed planning permission is sought

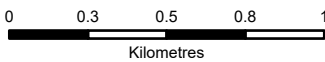
- Temporary Access Track - Cut/Fill
- Temporary Access Track - Floating
- Temporary Access Track - Floating
- Permanent Access Track - Cut/Fill
- Permanent Access Track - Floating
- Existing Access Tracks - Upgrade Required
- Equipotential Zone (EPZ) (Pulling Position)
- Temporary Tower Compound Area - SOUTH

Other

- Alignment Section Break
- Proposed Substation

Limit of Deviation

- Limit of Deviation (LoD)

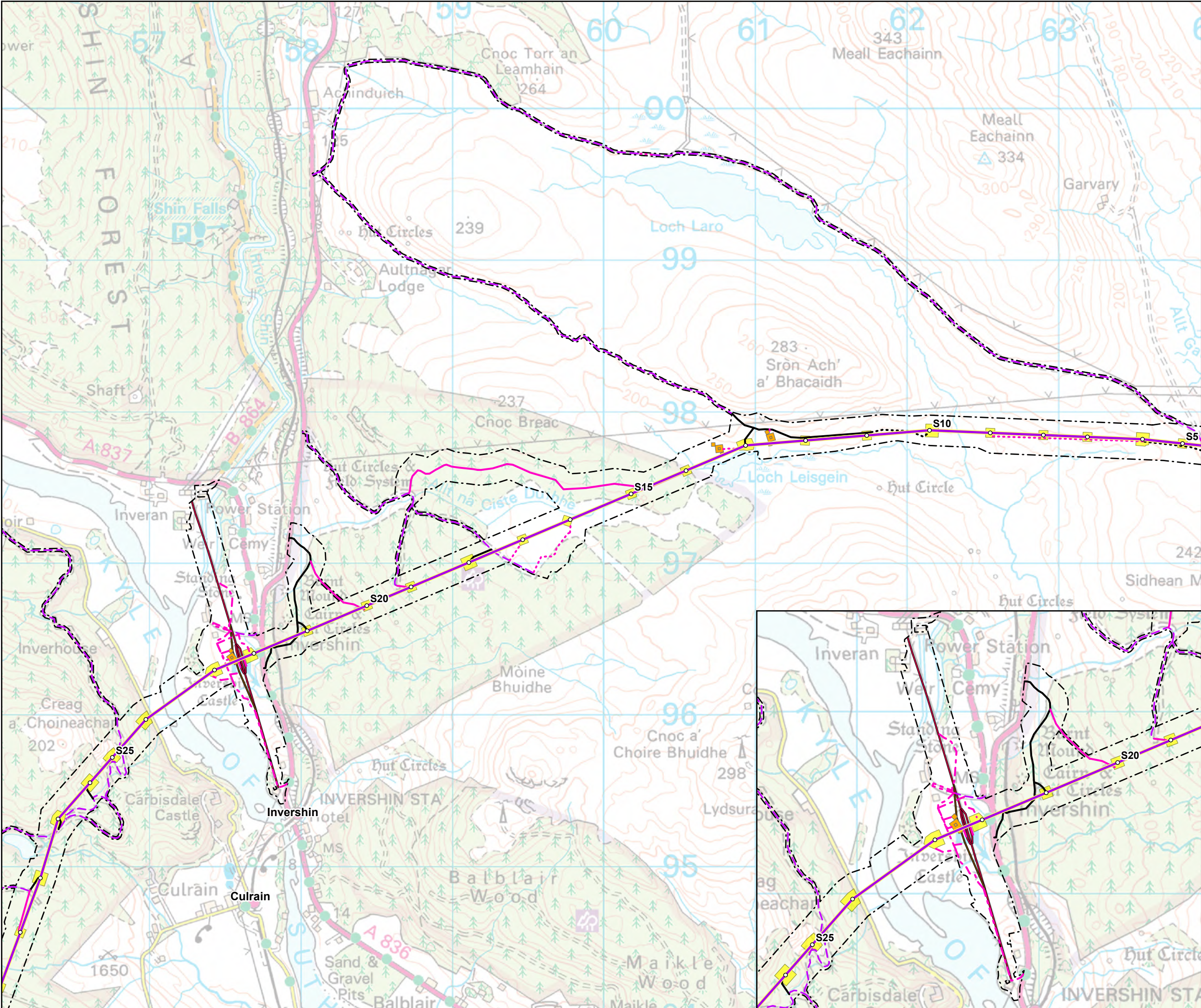


SCALE: See Scale Bar
SIZE: A3
PROJECT: 0652629
DATE: 11/08/2025

VERSION: A01
DRAWN: CI
CHECKED: BMG
APPROVED: KG

Figure 3.1 - 17
Spittal - Loch Buidhe - Beauly 400 kV OHL
Connection
Project Description





Development for which Section 37 consent is sought

- Tower Location
- Alignment Section C
- Special Arrangement
- Temporary Diversion During Construction of Special Arrangement

Ancillary Development for which deemed planning permission is sought

- Temporary Access Track - Trackway Panel
- Temporary Access Track - Cut/Fill
- Temporary Access Track - Floating
- Permanent Access Track - Cut/Fill
- Permanent Access Track - Floating
- Existing Access Tracks - Upgrade Required
- Equipotential Zone (EPZ) (Pulling Position)
- Temporary Tower Compound Area - SOUTH

Limit of Deviation

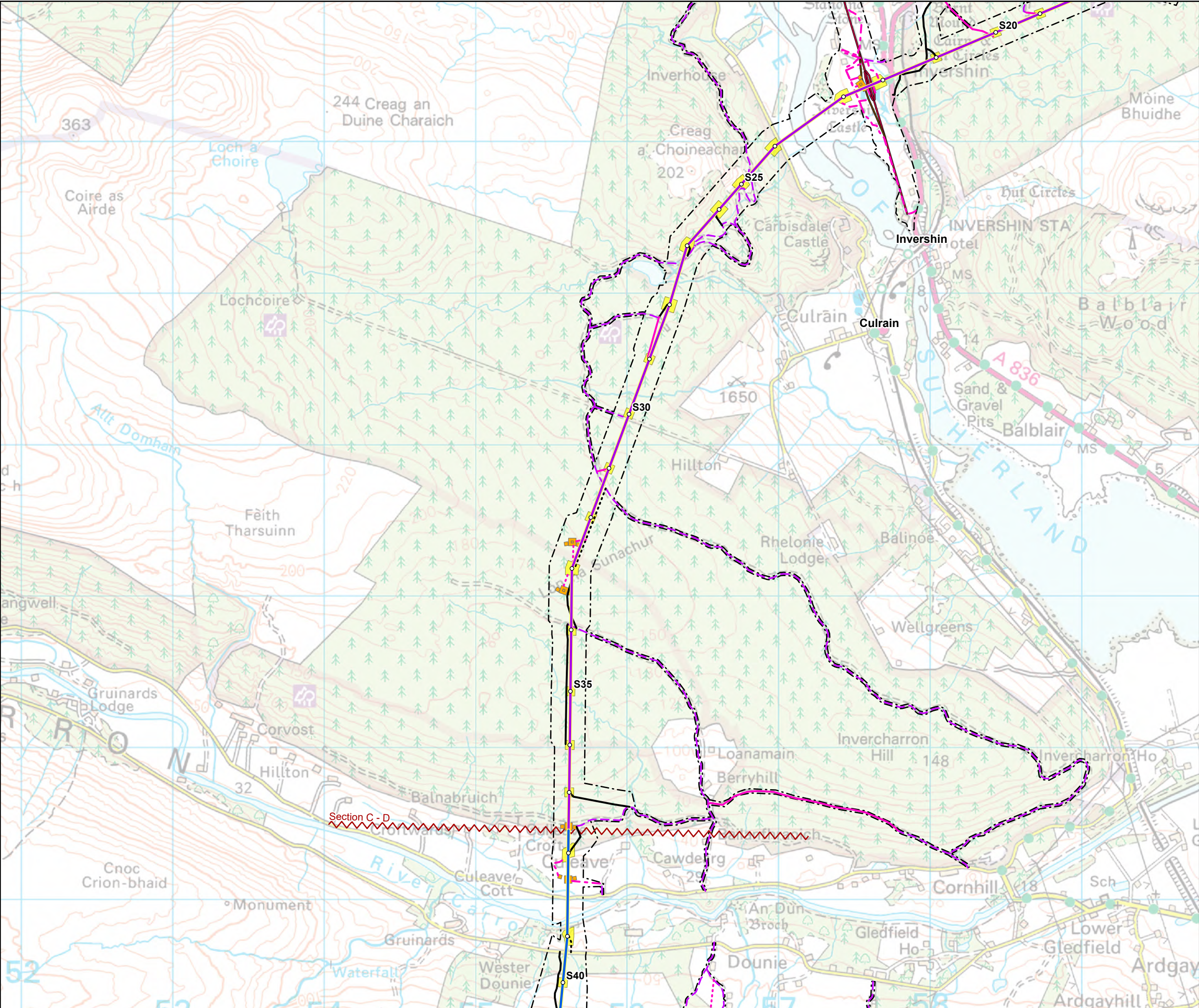
- Limit of Deviation (LoD)

0 0.3 0.5 0.8 1
Kilometres

SCALE: See Scale Bar
SIZE: A3
PROJECT: 0652629
DATE: 11/08/2025

VERSION: A01
DRAWN: CI
CHECKED: BMG
APPROVED: KG

Figure 3.1 - 18
Spittal - Loch Buidhe - Beauly 400 kV OHL
Connection
Project Description



Development for which Section 37 consent is sought

- Tower Location
- Alignment Section C
- Alignment Section D
- Special Arrangement
- Temporary Diversion During Construction of Special Arrangement

Ancillary Development for which deemed planning permission is sought

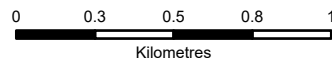
- - - Temporary Access Track - Trackway Panel
- Temporary Access Track - Cut/Fill
- - - Temporary Access Track - Floating
- Permanent Access Track - Cut/Fill
- - - Permanent Access Track - Floating
- Existing Access Tracks - Upgrade Required
- Equipotential Zone (EPZ) (Pulling Position)
- Temporary Tower Compound Area - SOUTH

Other

- ~ Alignment Section Break

Limit of Deviation

- - - Limit of Deviation (LoD)

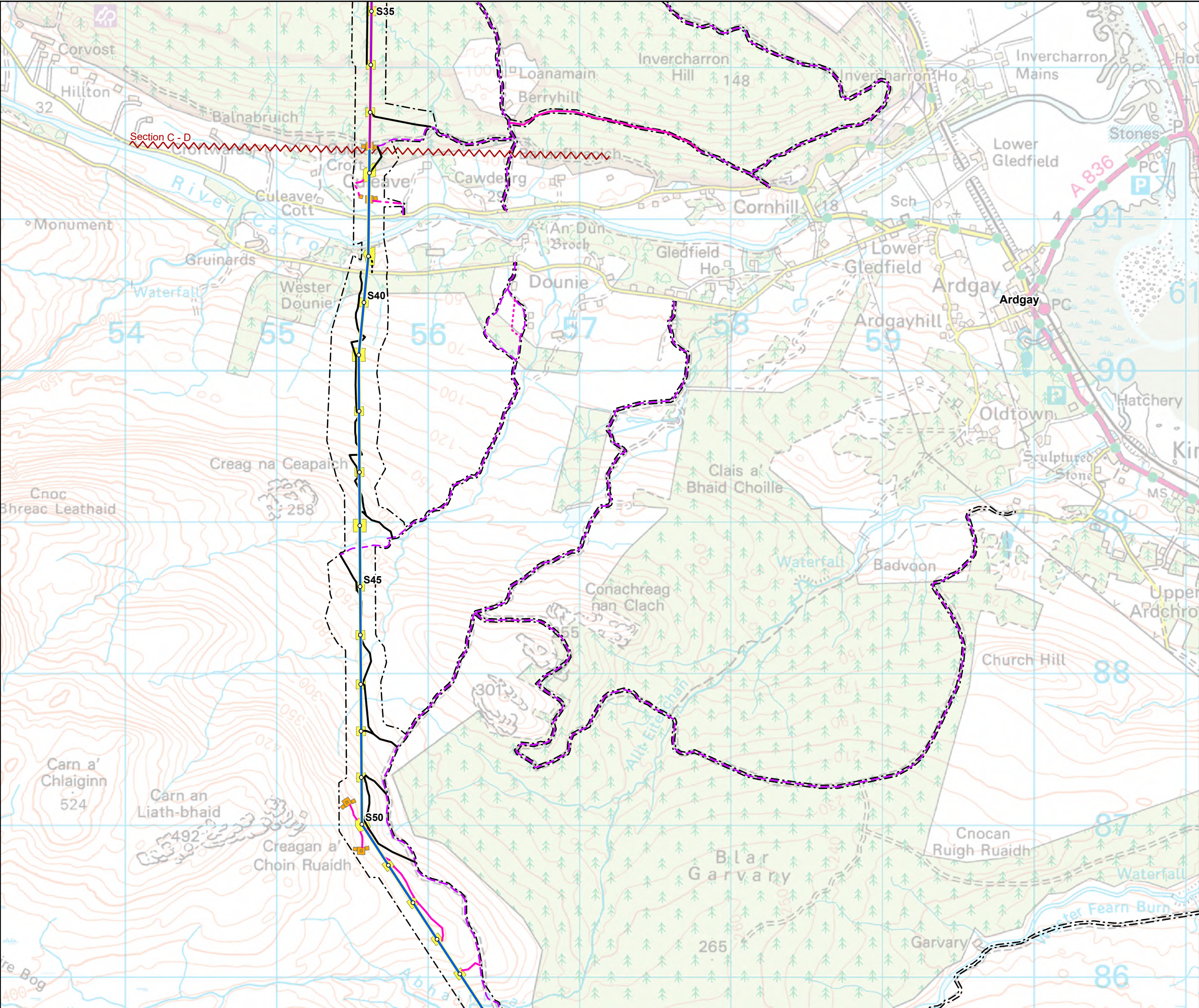


SCALE: See Scale Bar
SIZE: A3
PROJECT: 0652629
DATE: 11/08/2025

VERSION: A01
DRAWN: CI
CHECKED: BMG
APPROVED: KG

Figure 3.1 - 19
Spittal - Loch Buidhe - Beauly 400 kV OHL
Connection
Project Description





Development for which Section 37 consent is sought

- Tower Location
- Alignment Section C
- Alignment Section D

Ancillary Development for which deemed planning permission is sought

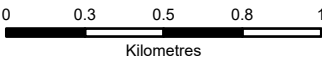
- - - Temporary Access Track - Trackway Panel
- Temporary Access Track - Cut/Fill
- ... Temporary Access Track - Floating
- Permanent Access Track - Cut/Fill
- ... Permanent Access Track - Floating
- Existing Access Tracks - Upgrade Required
- Equipotential Zone (EPZ) (Pulling Position)
- Temporary Tower Compound Area - SOUTH

Other

- ~ Alignment Section Break

Limit of Deviation

- - - Limit of Deviation (LoD)

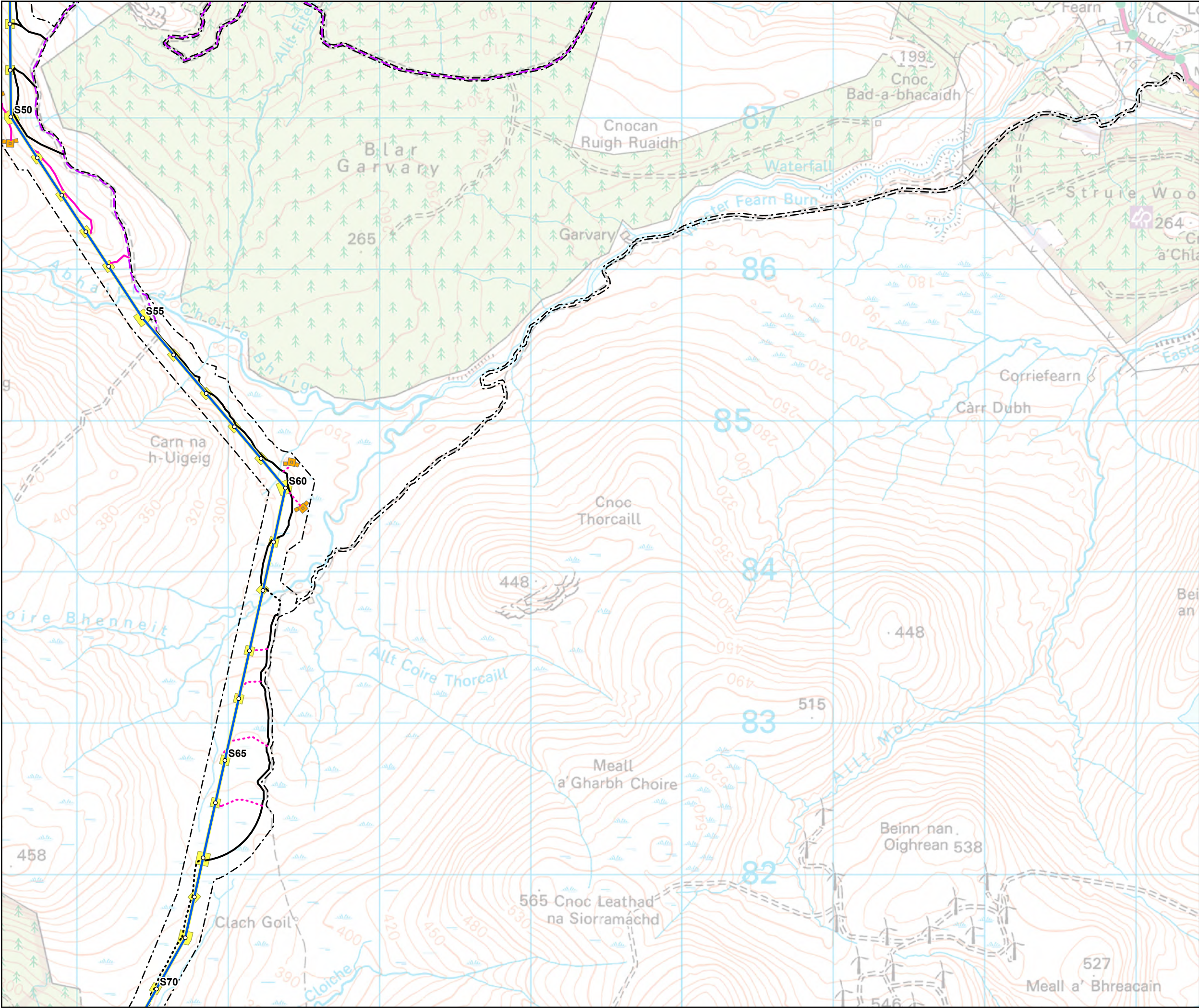


SCALE: See Scale Bar
SIZE: A3
PROJECT: 0652629
DATE: 11/08/2025

VERSION: A01
DRAWN: CI
CHECKED: BMG
APPROVED: KG

Figure 3.1 - 20
Spittal - Loch Buidhe - Beaully 400 kV OHL
Connection
Project Description





Development for which Section 37 consent is sought

- Tower Location
- Alignment Section D

Ancillary Development for which deemed planning permission is sought

- Temporary Access Track - Cut/Fill
- Temporary Access Track - Floating
- Permanent Access Track - Cut/Fill
- Permanent Access Track - Floating
- Existing Access Tracks - Upgrade Required
- Equipotential Zone (EPZ) (Pulling Position)
- Temporary Tower Compound Area - SOUTH

Limit of Deviation

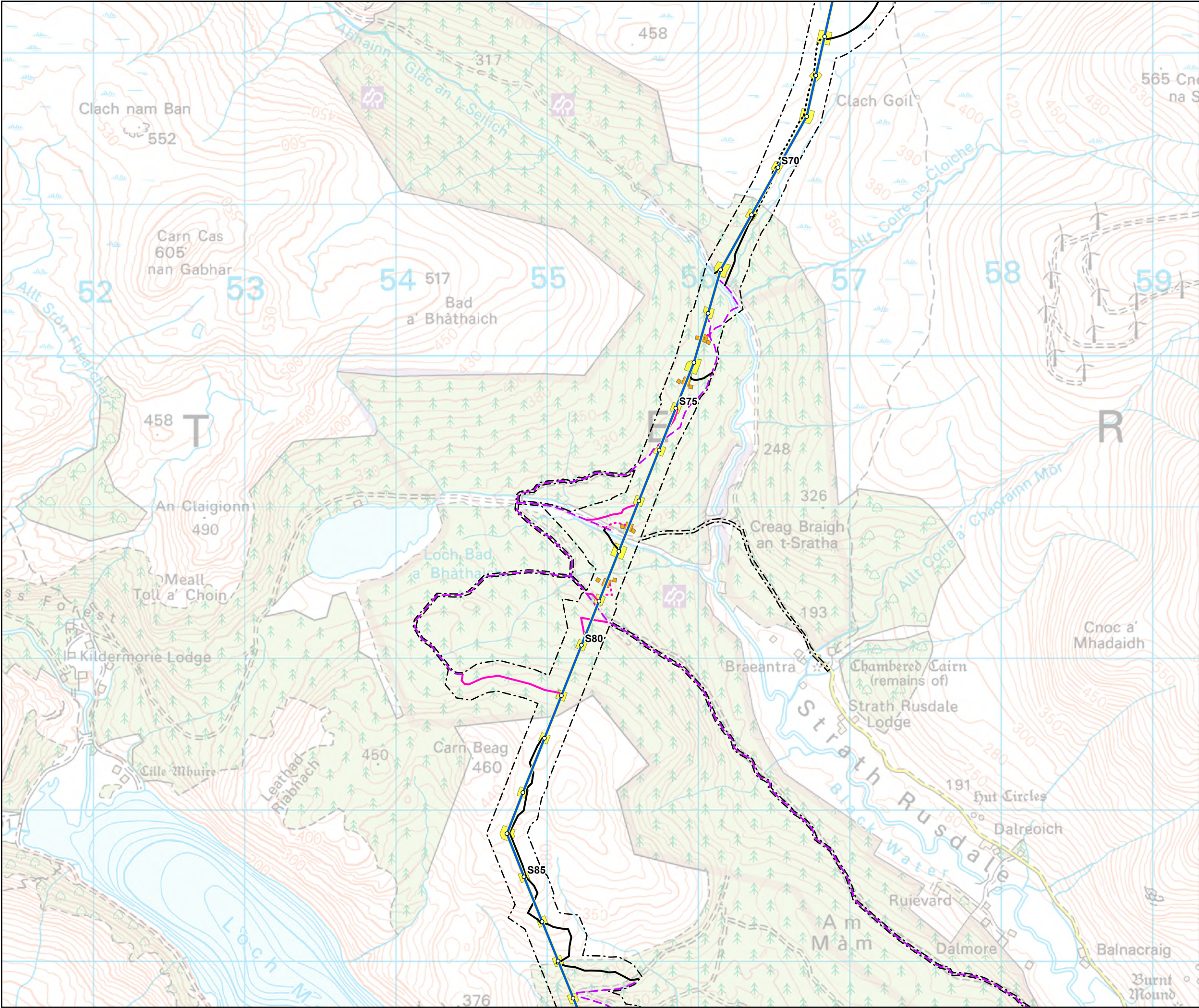
- - - Limit of Deviation (LoD)

0 0.3 0.5 0.8 1
Kilometres

N

SCALE: See Scale Bar	VERSION: A01
SIZE: A3	DRAWN: CI
PROJECT: 0652629	CHECKED: BMG
DATE: 11/08/2025	APPROVED: KG

Figure 3.1 - 21
Spittal - Loch Buidhe - Beauly 400 kV OHL
Connection
Project Description



Development for which Section 37 consent is sought

- Tower Location
- Alignment Section D

Ancillary Development for which deemed planning permission is sought

- Temporary Access Track - Cut/Fill
- Temporary Access Track - Floating
- Permanent Access Track - Cut/Fill
- Permanent Access Track - Floating
- Existing Access Tracks - Upgrade Required
- Equipotential Zone (EPZ) (Pulling Position)
- Temporary Tower Compound Area - SOUTH

Limit of Deviation

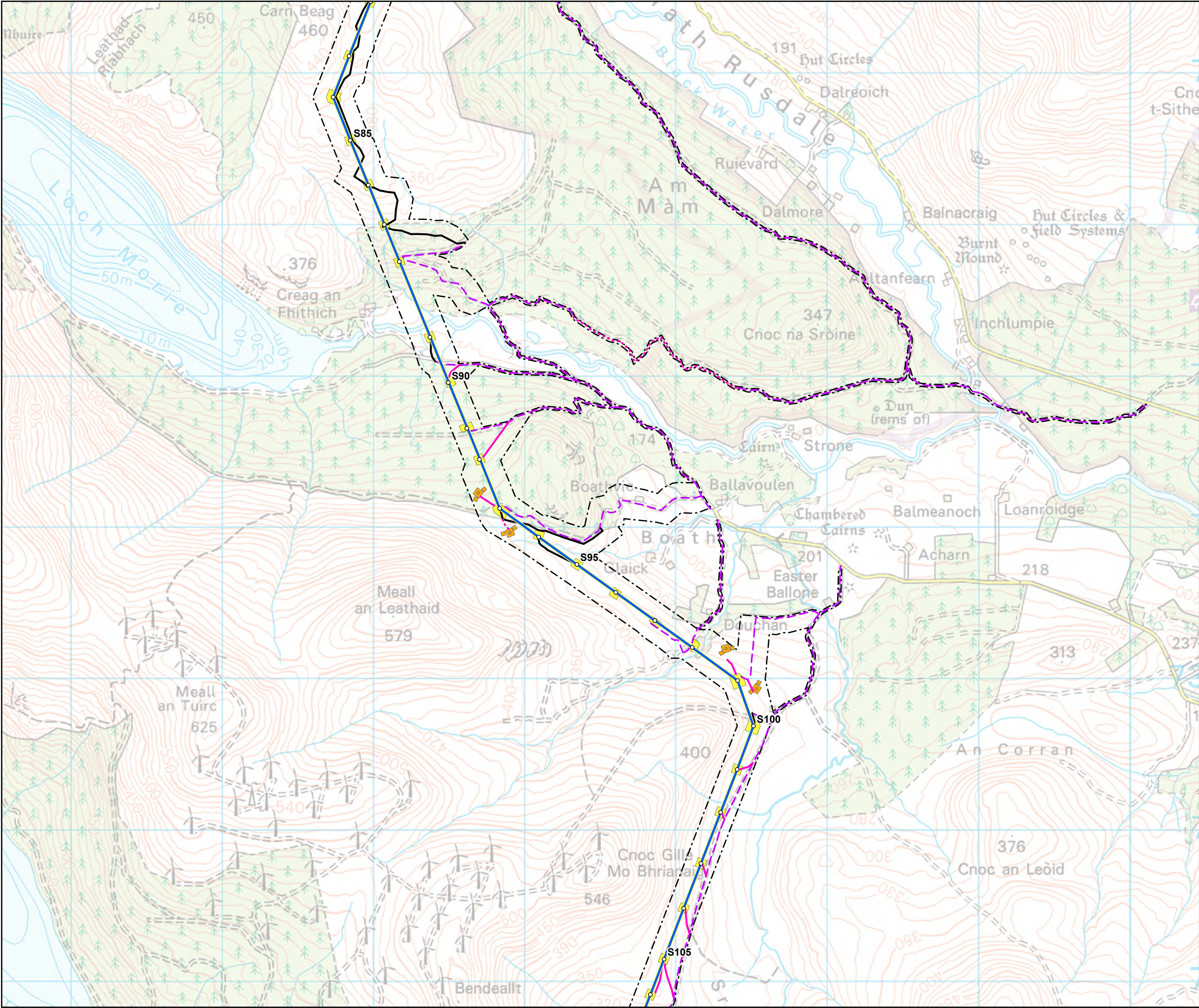
- - - Limit of Deviation (LoD)

0 0.3 0.5 0.8 1
Kilometres

N

SCALE: See Scale Bar	VERSION: A01
SIZE: A3	DRAWN: CI
PROJECT: 0652629	CHECKED: BMG
DATE: 11/08/2025	APPROVED: KG

Figure 3.1 - 22
Spittal - Loch Buidhe - Beauly 400 kV OHL
Connection
Project Description



Development for which Section 37 consent is sought

- Tower Location
- Alignment Section D

Ancillary Development for which deemed planning permission is sought

- Temporary Access Track - Cut/Fill
- Temporary Access Track - Floating
- Permanent Access Track - Cut/Fill
- Existing Access Tracks - Upgrade Required
- Equipotential Zone (EPZ) (Pulling Position)
- Temporary Tower Compound Area - SOUTH

Limit of Deviation

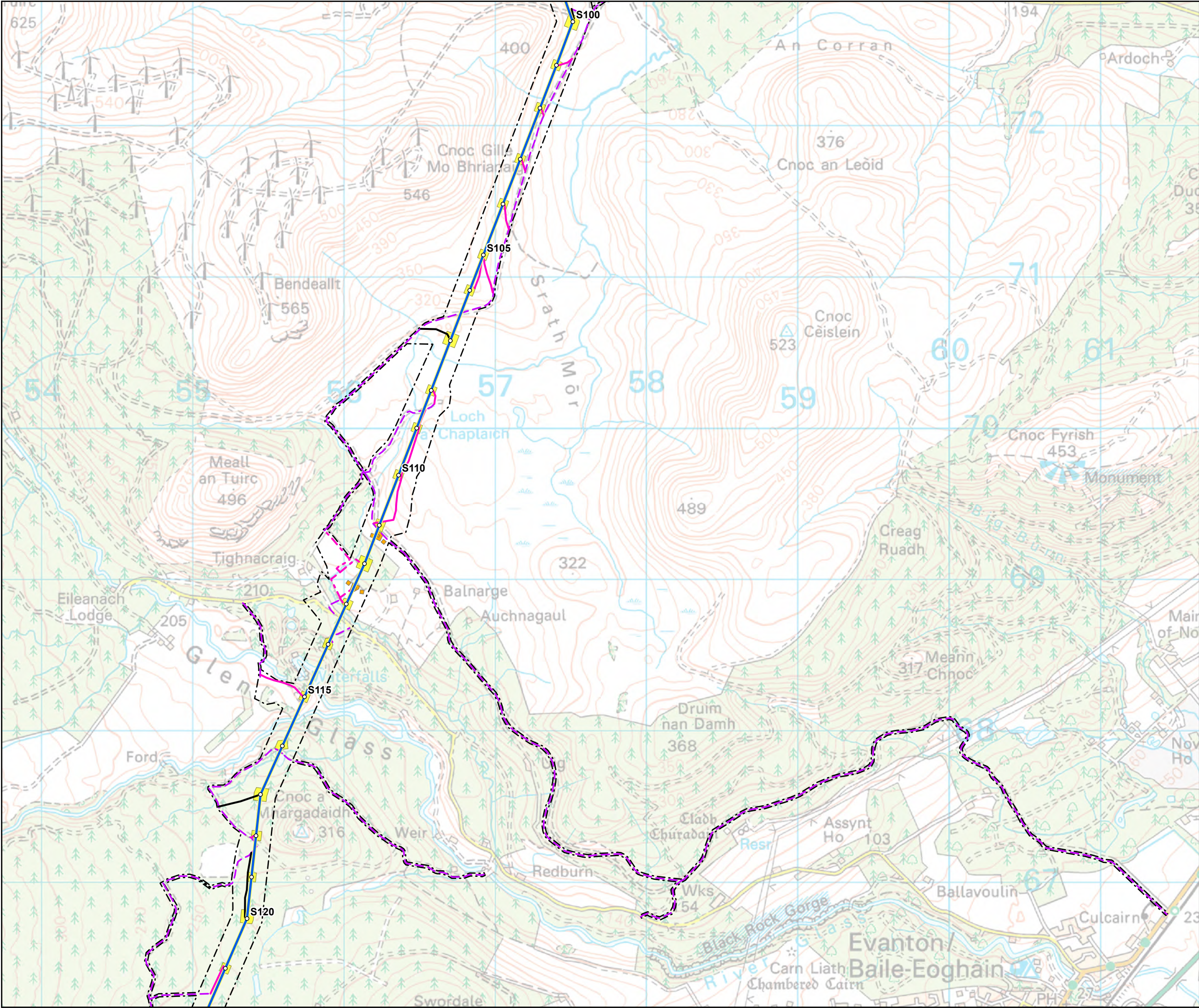
- Limit of Deviation (LoD)

0 0.3 0.5 0.8 1
Kilometres

N

SCALE: See Scale Bar	VERSION: A01
SIZE: A3	DRAWN: CI
PROJECT: 0652629	CHECKED: BMG
DATE: 11/08/2025	APPROVED: KG

Figure 3.1 - 23
Spittal - Loch Buidhe - Beauly 400 kV OHL
Connection
Project Description



Development for which Section 37 consent is sought

- Tower Location
- Alignment Section D

Ancillary Development for which deemed planning permission is sought

- Temporary Access Track - Trackway Panel
- Temporary Access Track - Cut/Fill
- Permanent Access Track - Cut/Fill
- Permanent Access Track - Floating
- Existing Access Tracks - Upgrade Required
- Equipotential Zone (EPZ) (Pulling Position)
- Temporary Tower Compound Area - SOUTH

Limit of Deviation

- Limit of Deviation (LoD)

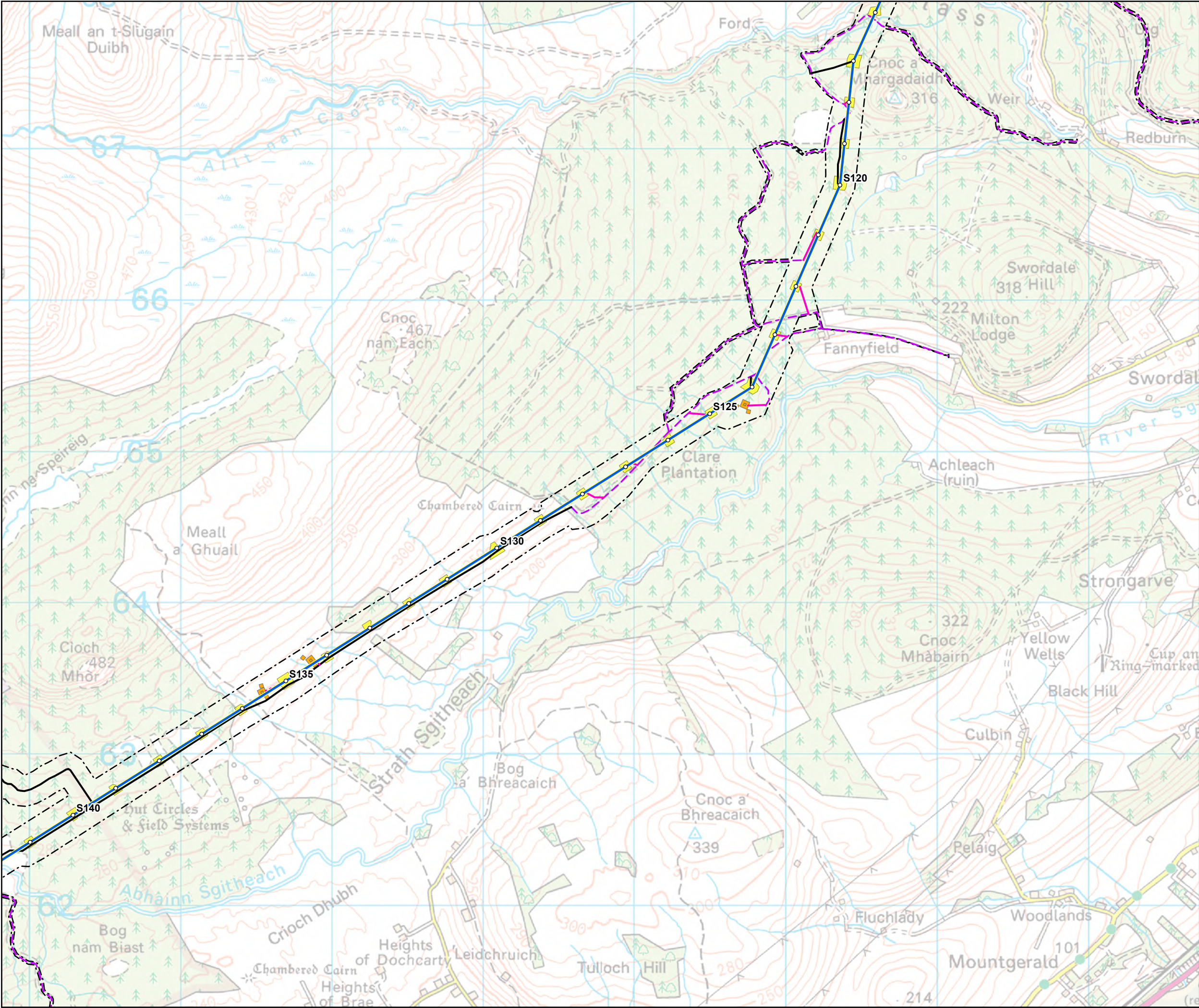
0 0.3 0.5 0.8 1

Kilometres

N

SCALE: See Scale Bar	VERSION: A01
SIZE: A3	DRAWN: CI
PROJECT: 0652629	CHECKED: BMG
DATE: 11/08/2025	APPROVED: KG

Figure 3.1 - 24
Spittal - Loch Buidhe - Beauly 400 kV OHL
Connection
Project Description



Development for which Section 37 consent is sought

- Tower Location
- Alignment Section D

Ancillary Development for which deemed planning permission is sought

- Temporary Access Track - Cut/Fill
- Temporary Access Track - Floating
- Permanent Access Track - Cut/Fill
- Permanent Access Track - Floating
- Existing Access Tracks - Upgrade Required
- Equipotential Zone (EPZ) (Pulling Position)
- Temporary Tower Compound Area - SOUTH

Limit of Deviation

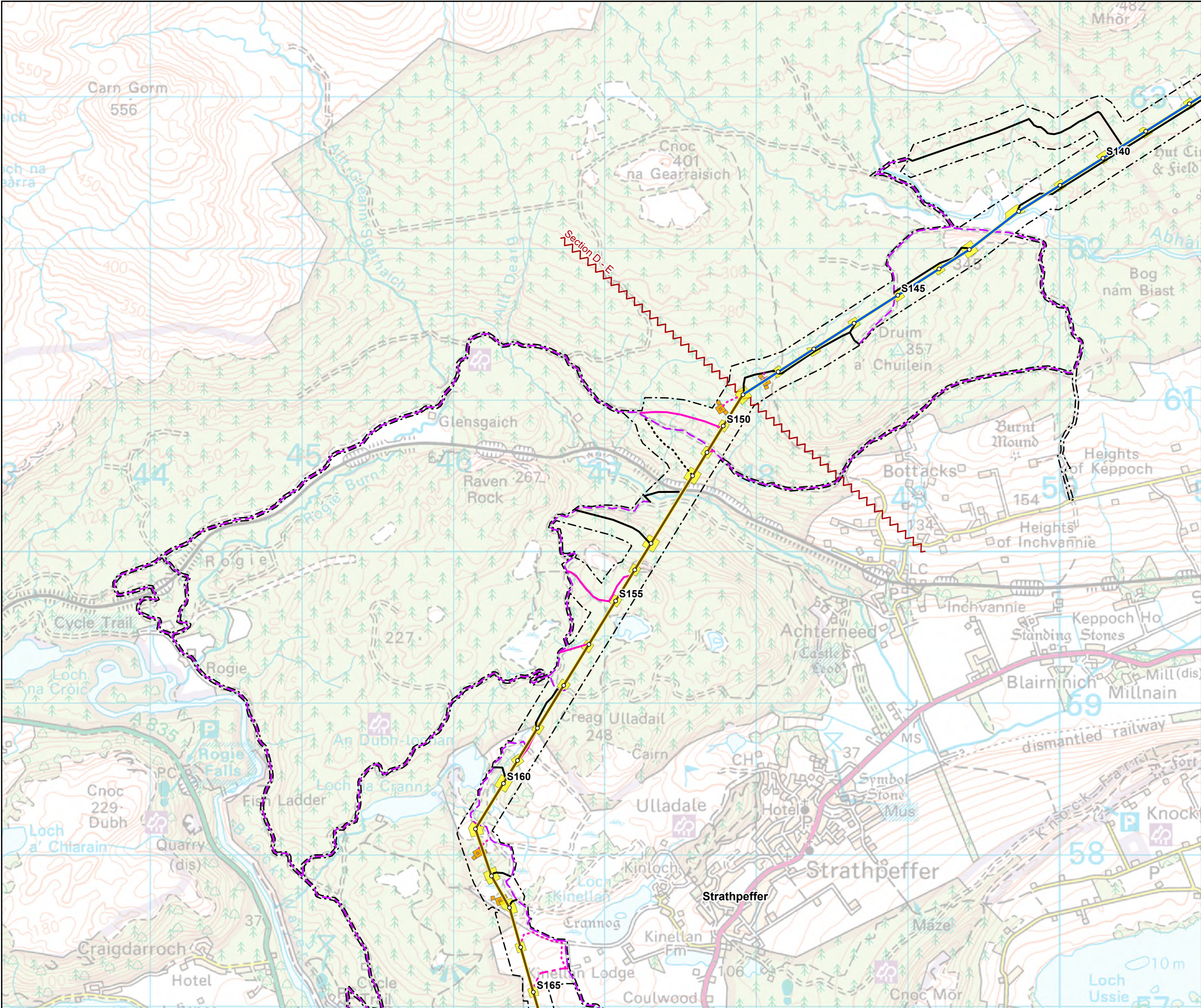
- - - Limit of Deviation (LoD)

0 0.3 0.5 0.8 1
Kilometres

N

SCALE: See Scale Bar	VERSION: A01
SIZE: A3	DRAWN: CI
PROJECT: 0652629	CHECKED: BMG
DATE: 11/08/2025	APPROVED: KG

Figure 3.1 - 25
Spittal - Loch Buidhe - Beaully 400 kV OHL
Connection
Project Description



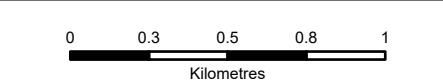
Development for which Section 37 consent is sought

- Tower Location
- Alignment Section D
- Alignment Section E
- Temporary Access Track - Trackway Panel
- Temporary Access Track - Cut/Fill
- Temporary Access Track - Floating
- Permanent Access Track - Cut/Fill
- Permanent Access Track - Floating
- Existing Access Tracks - Upgrade Required
- Equipotential Zone (EPZ) (Pulling Position)
- Temporary Tower Compound Area - SOUTH

- Other**
- Alignment Section Break
 - Limit of Deviation (LoD)

Limit of Deviation

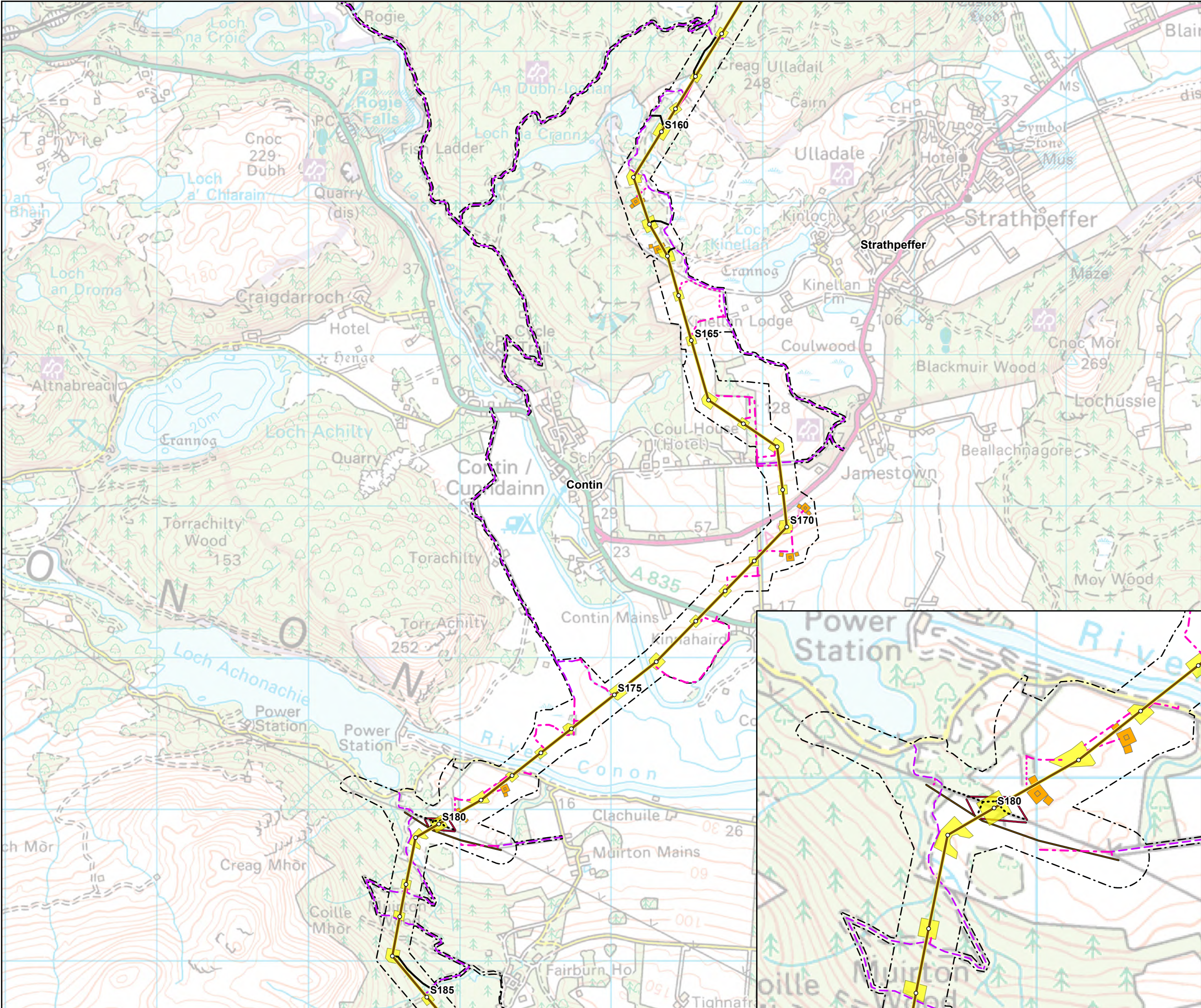
- Limit of Deviation (LoD)



SCALE: See Scale Bar	VERSION: A01
SIZE: A3	DRAWN: CI
PROJECT: 0652629	CHECKED: BMG
DATE: 11/08/2025	APPROVED: KG

Figure 3.1 - 26
Spittal - Loch Buidhe - Beauly 400 kV OHL
Connection
Project Description





Development for which Section 37 consent is sought

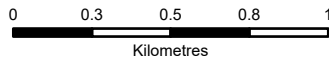
- Tower Location
- Alignment Section E
- Special Arrangement
- Temporary Diversion During Construction of Special Arrangement

Ancillary Development for which deemed planning permission is sought

- Temporary Access Track - Trackway Panel
- Temporary Access Track - Cut/Fill
- Temporary Access Track - Floating
- Permanent Access Track - Cut/Fill
- Permanent Access Track - Floating
- Existing Access Tracks - Upgrade Required
- Equipotential Zone (EPZ) (Pulling Position)
- Temporary Tower Compound Area - SOUTH

Limit of Deviation

- Limit of Deviation (LoD)



SCALE: See Scale Bar
SIZE: A3
PROJECT: 0652629
DATE: 11/08/2025

VERSION: A01
DRAWN: CI
CHECKED: BMG
APPROVED: KG

Figure 3.1 - 27
Spittal - Loch Buidhe - Beauly 400 kV OHL
Connection
Project Description

