

Potential and Alternative Alignment Options

- Potential
- Alternative
- Alignment Sub-Section Break

Existing OHL

- Existing 132kV OHL
- Existing 275kV OHL
- Substation

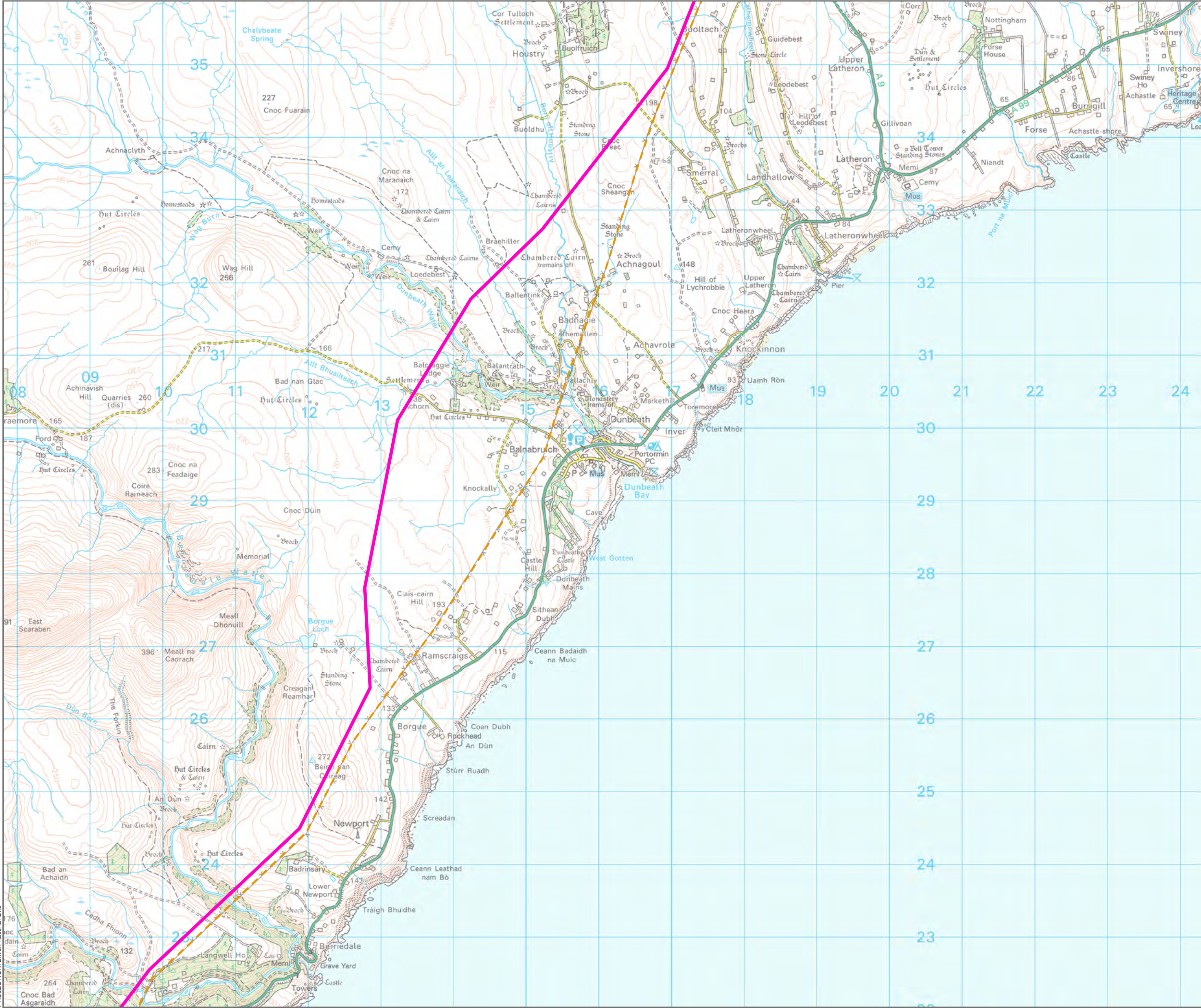
0 0.5 1 1.5 2 2.5

Kilometres

N

SCALE: See Scale Bar	VERSION: A01
SIZE: A3	DRAWN: CR
PROJECT: 0720281	CHECKED: BM
DATE: 07/08/2025	APPROVED: KG

Figure 4.3 - 1
Spittal - Loch Buidhe - Beauly 400 kV OHL
Connection
Potential and Alternative Alignments

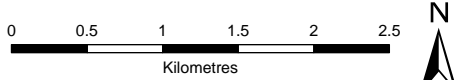


Potential and Alternative Alignment Options

Potential

Existing OHL

Existing 132kV OHL



SCALE: See Scale Bar
SIZE: A3
PROJECT: 0720281
DATE: 07/08/2025

VERSION: A01
DRAWN: CR
CHECKED: BM
APPROVED: KG

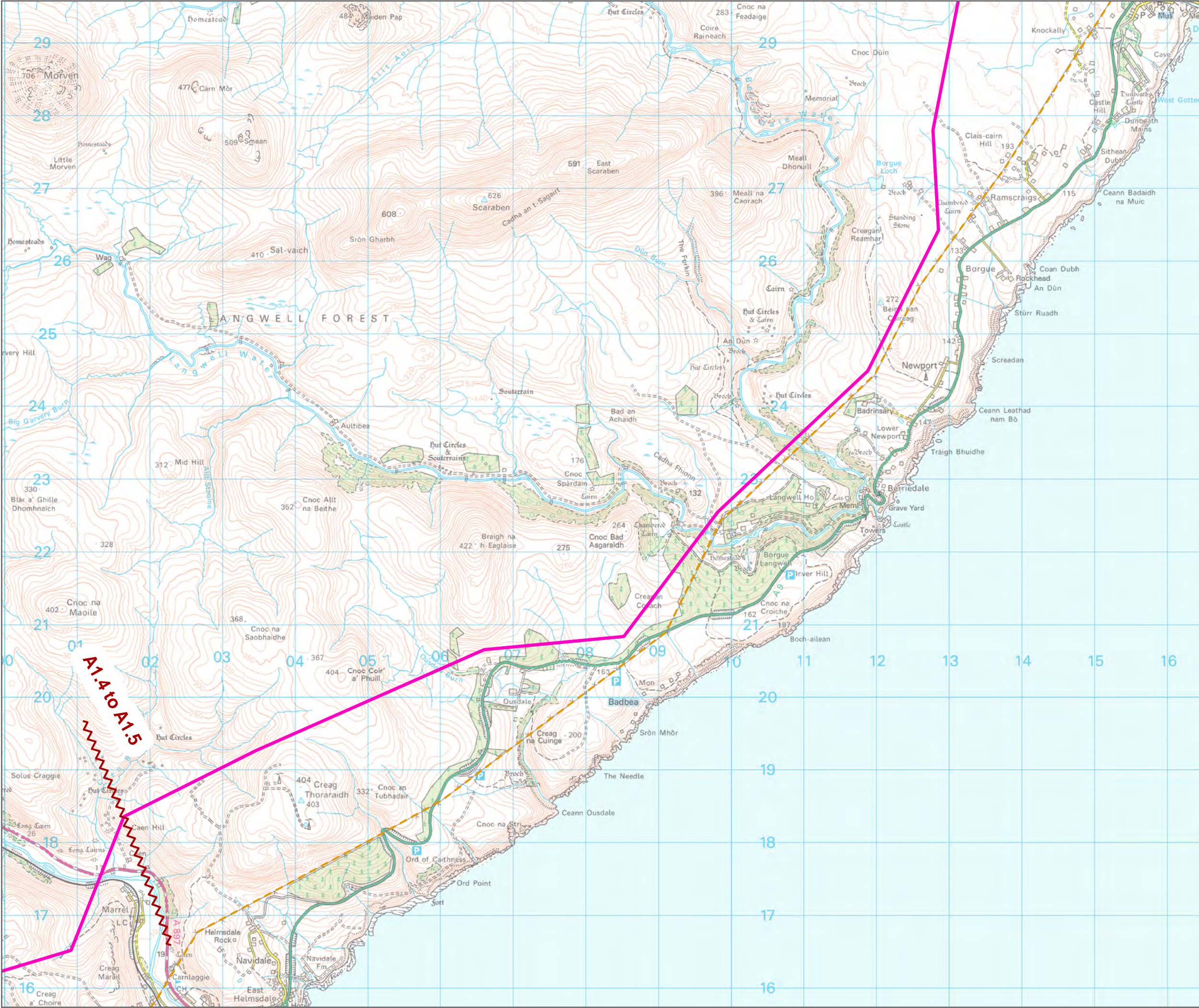
Figure 4.3 - 3
Spittal - Loch Buidhe - Beauly 400 kV OHL
Connection
Potential and Alternative Alignments



PROJECTION: British National Grid

Esri, CGIAR, N Robinson, NCEAS, USGS, Sources: Esri, TomTom, Garmin, FAO, NOAA, USGS, © OpenStreetMap contributors, and the GIS User Community.
© Landmark Information Group Limited and/or its Data Suppliers (All rights reserved 2010).

Path: \\uksprdgisf01\Data\London\Projects\0652629 - SSE Beauly to Loch Buidhe\Maps\0720281 - SLBB - Routing Process and Alternatives.aprx



Potential and Alternative Alignment Options

- Potential
- Alignment Sub-Section Break
- Existing OHL
- Existing 132kV OHL

Figure 4.3 - 4
Spittal - Loch Buidhe - Beauly 400 kV OHL
Connection
Potential and Alternative Alignments

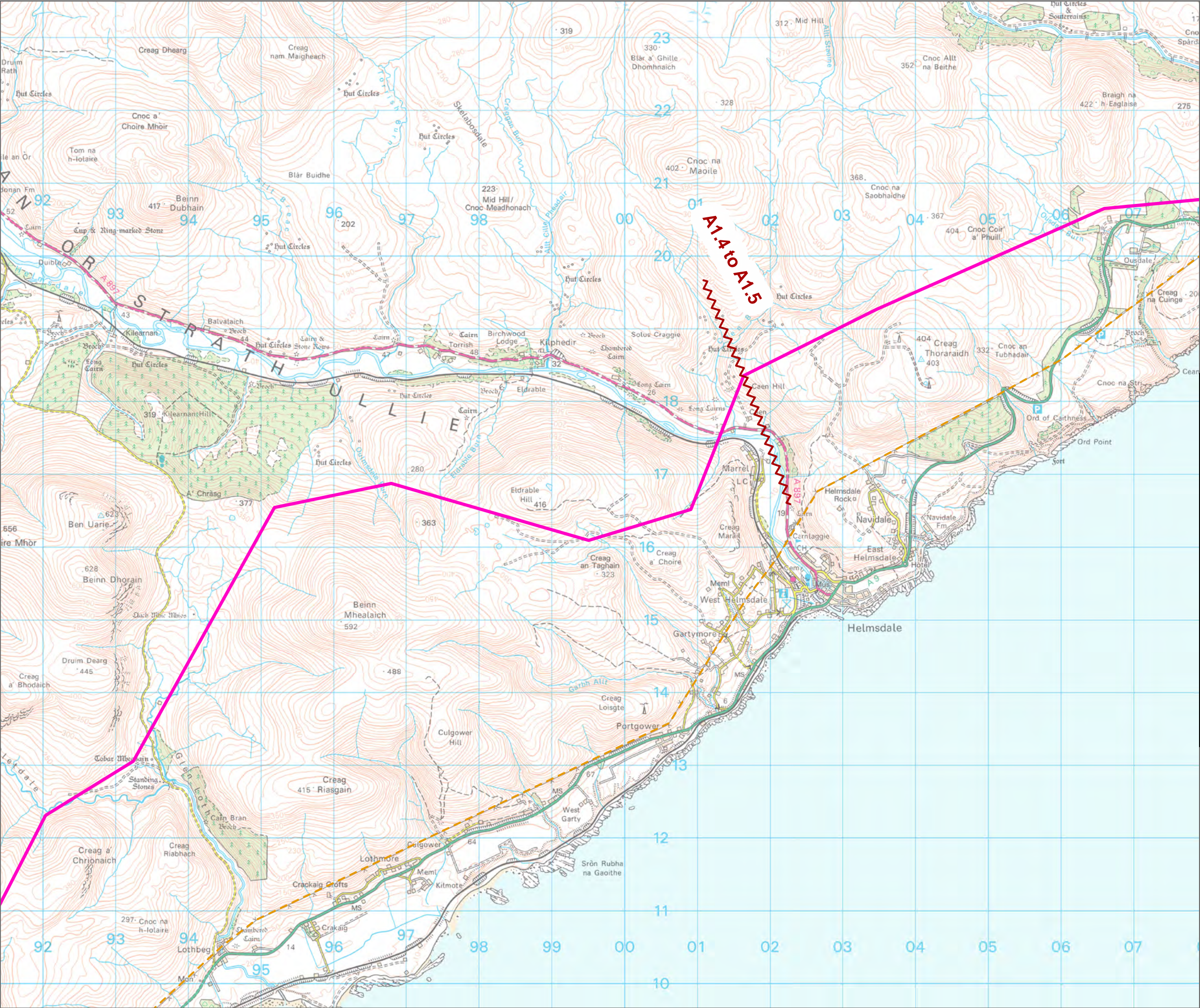
Scale: 0 to 2.5 Kilometres

Scale: See Scale Bar
Size: A3
Project: 0720281
Date: 07/08/2025

Version: A01
Drawn: CR
Checked: BM
Approved: KG

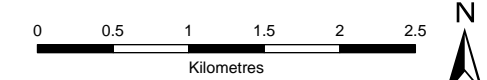
ERM

Scottish & Southern
Electricity Networks
TRANSMISSION



Potential and Alternative Alignment Options

- Potential
- Alignment Sub-Section Break
- Existing OHL
- Existing 132kV OHL

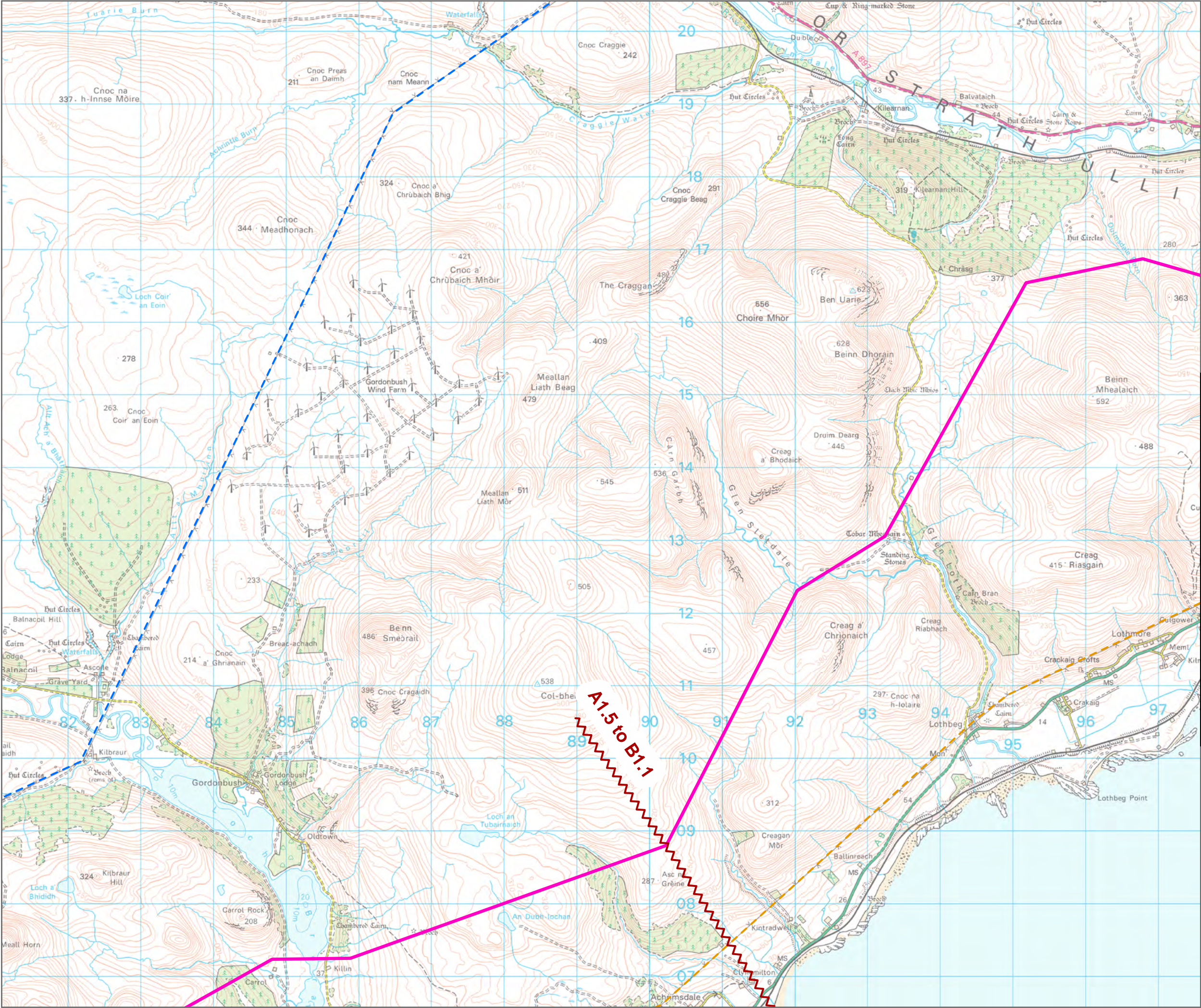


SCALE: See Scale Bar
SIZE: A3
PROJECT: 0720281
DATE: 07/08/2025

VERSION: A01
DRAWN: CR
CHECKED: BM
APPROVED: KG

Figure 4.3 - 5
Spittal - Loch Buidhe - Beaulieu 400 kV OHL
Connection
Potential and Alternative Alignments





Potential and Alternative Alignment Options

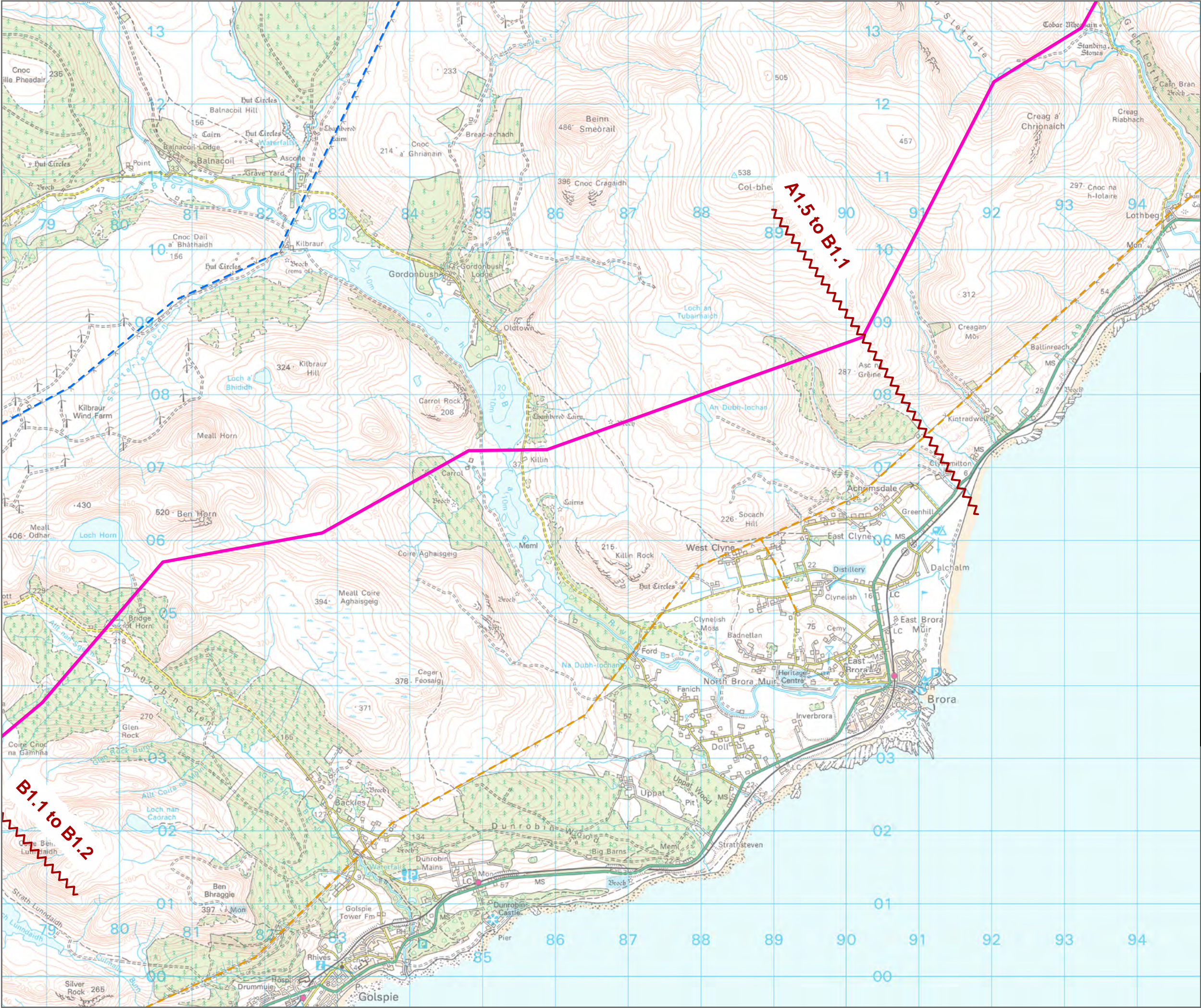
- Potential
- Alignment Sub-Section Break
- Existing OHL
- Existing 132kV OHL
- Existing 275kV OHL

0 0.5 1 1.5 2 2.5 Kilometres

N

SCALE: See Scale Bar	VERSION: A01
SIZE: A3	DRAWN: CR
PROJECT: 0720281	CHECKED: BM
DATE: 07/08/2025	APPROVED: KG

Figure 4.3 - 6
Spittal - Loch Buidhe - Beauly 400 kV OHL
Connection
Potential and Alternative Alignments



Potential and Alternative Alignment Options

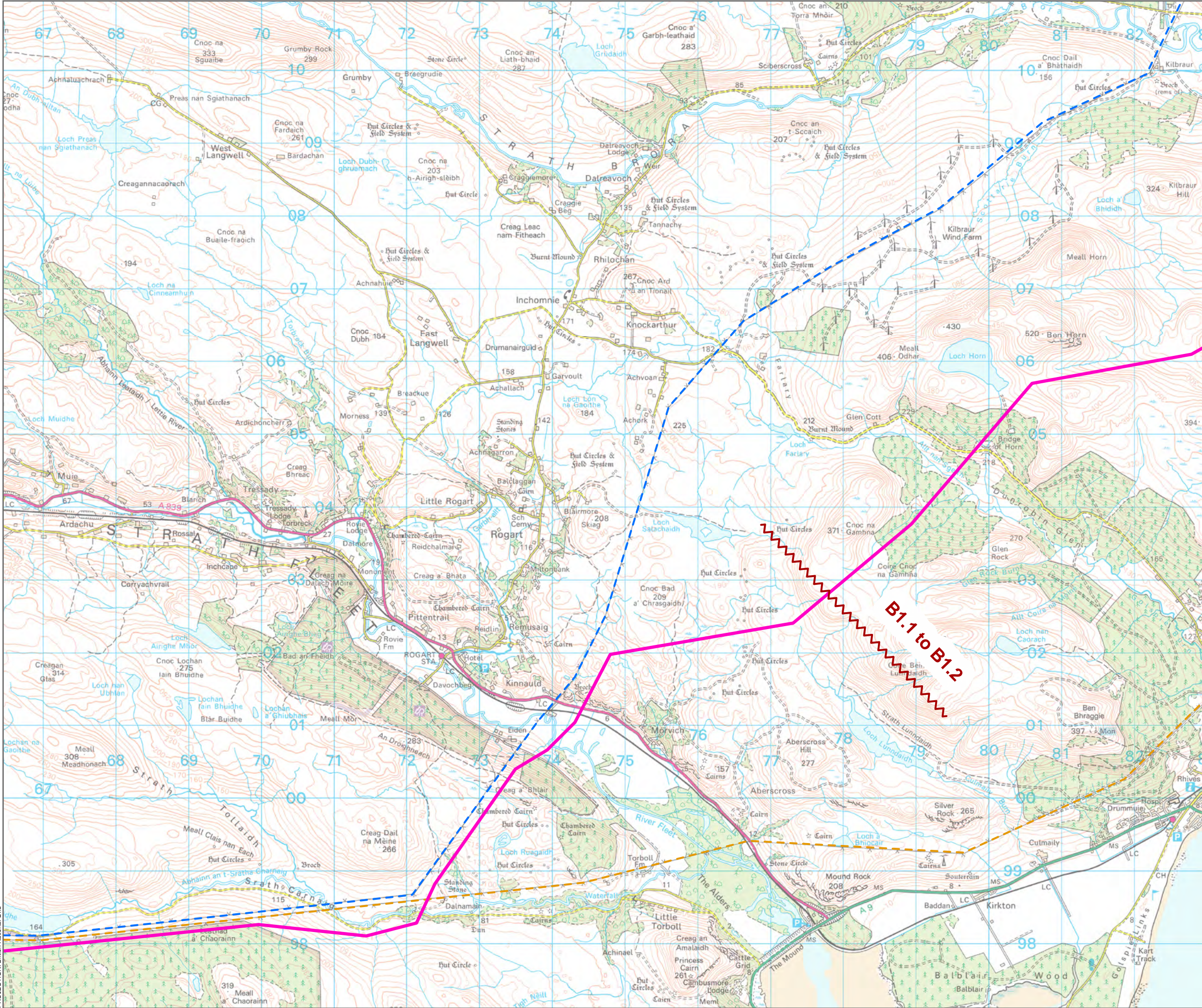
- Potential
- Alignment Sub-Section Break
- Existing OHL
- Existing 132kV OHL
- Existing 275kV OHL

0 0.5 1 1.5 2 2.5
Kilometres

N

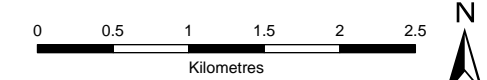
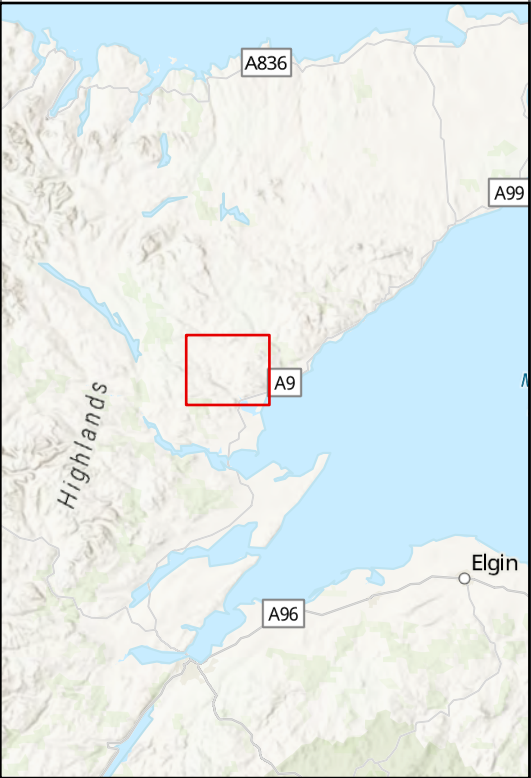
SCALE: See Scale Bar	VERSION: A01
SIZE: A3	DRAWN: CR
PROJECT: 0720281	CHECKED: BM
DATE: 07/08/2025	APPROVED: KG

Figure 4.3 - 7
Spittal - Loch Buidhe - Beauly 400 kV OHL
Connection
Potential and Alternative Alignments



Potential and Alternative Alignment Options

- Potential
- Alignment Sub-Section Break
- Existing OHL
- Existing 132kV OHL
- Existing 275kV OHL



SCALE: See Scale Bar
SIZE: A3
PROJECT: 0720281
DATE: 07/08/2025

VERSION: A01
DRAWN: CR
CHECKED: BM
APPROVED: KG

Figure 4.3 - 8
Spittal - Loch Buidhe - Beauly 400 kV OHL
Connection
Potential and Alternative Alignments

