

Tower Location

Alignment Section A

Temporary Tower Compound Area

Equipotential Zone (EPZ) (Pulling Position)

Temporary Access Track - Trackway Panel

Temporary Access Track - Cut/Fill

Temporary Access Track - Floating

Permanent Access Track - Cut/Fill

Permanent Access Track - Floating

Proposed Development

200m Survey Area

30m Survey Area

Watercourses and Drains - OSMM

Management Felling

Protected Species

Species

Evidence

Pine marten

American mink

Otter

Faeces

0

0.1

0.2

0.3

0.4

0.5

Kilometres

N

SCALE: See Scale Bar

VERSION: A02

SIZE: A3

DRAWN: CI

PROJECT: 0720281

CHECKED: CG

DATE: 06/08/2025

APPROVED: KG

Figure 8.4 - 2

Spittal - Loch Buidhe - Beauly 400 kV OHL Connection

Protected Species

ERM

Scottish & Southern

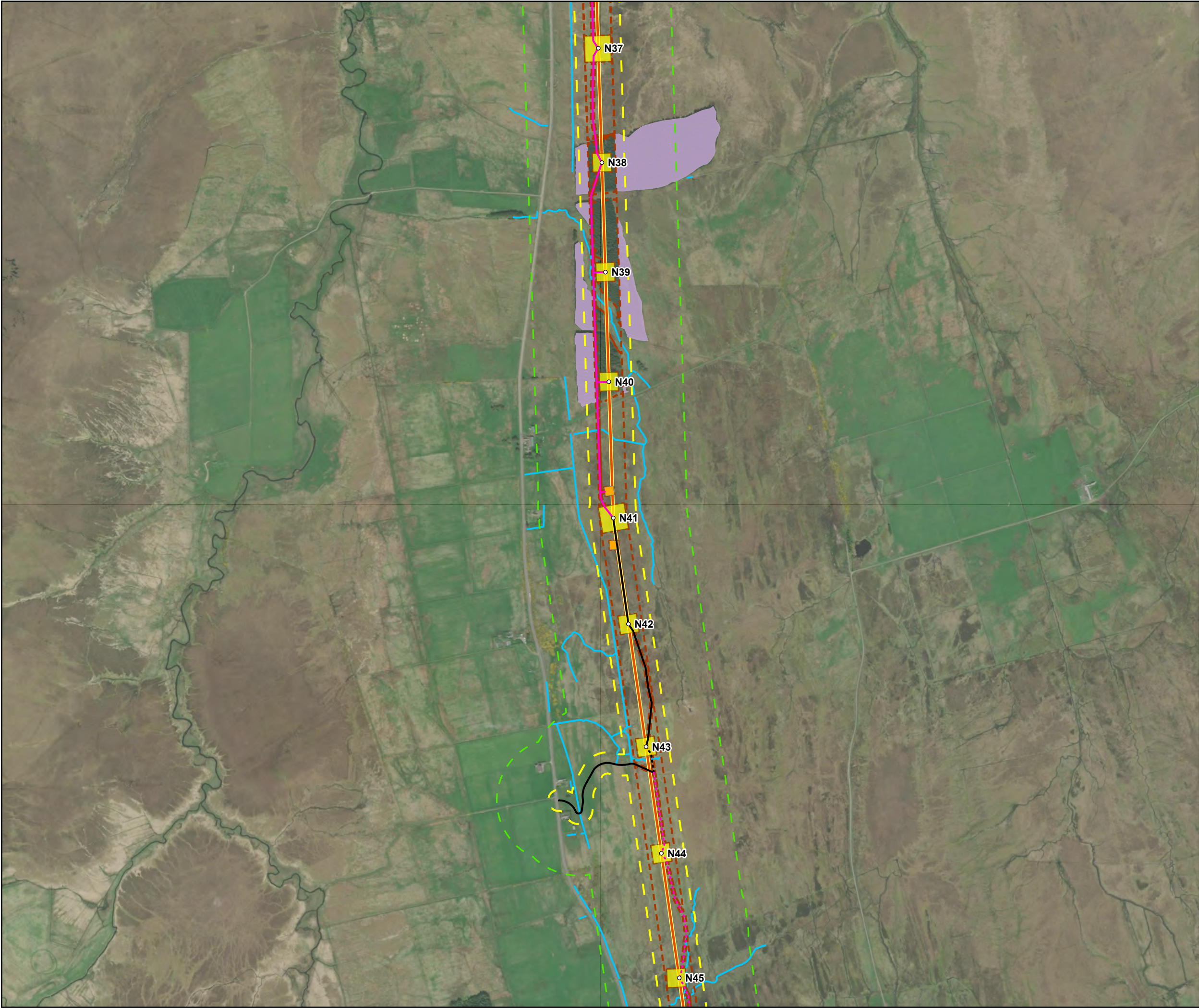
Electricity Networks

TRANSMISSION

PROJECTION: British National Grid

Maxar, Microsoft, Sources: Esri, TomTom, Garmin, FAO, NOAA, USGS, © OpenStreetMap contributors, and the GIS User Community, Esri, USGS © NatureScot, Contains Ordnance Survey data © Crown copyright and database right (2025)

Path: \\ukspdgisfs01\Data\London\Projects\0652629 - SSE Beauly to Loch Buidhe\Maps\0720281 - SLBB - Ecology.aprx / 0720281 - SLBB - EIA - Ecology - Figure 8.4 - Protected Species - A03



○ Tower Location

— Alignment Section A

Temporary Tower Compound Area

Equipotential Zone (EPZ) (Pulling Position)

--- Temporary Access Track - Trackway Panel

— Temporary Access Track - Cut/Fill

... Temporary Access Track - Floating

— Permanent Access Track - Cut/Fill

... Permanent Access Track - Floating

- - - Proposed Development

- - - 200m Survey Area

- - - 30m Survey Area

Watercourses and Drains - OSMM

Management Felling

Moray Firth

0 0.1 0.2 0.3 0.4 0.5

Kilometres

N

SCALE: See Scale Bar	VERSION: A02
SIZE: A3	DRAWN: CI
PROJECT: 0720281	CHECKED: CG
DATE: 06/08/2025	APPROVED: KG

Figure 8.4 - 6
Spittal - Loch Buidhe - Beauly 400 kV OHL Connection
Protected Species



○ Tower Location

Alignment Section A

Special Arrangement

Temporary Tower Compound Area

Equipotential Zone (EPZ) (Pulling Position)

Temporary Access Track - Trackway Panel

Temporary Access Track - Cut/Fill

Temporary Access Track - Floating

Permanent Access Track - Cut/Fill

Permanent Access Track - Floating

Proposed Development

200m Survey Area

30m Survey Area

Watercourses and Drains - OSMM

Protected Species

Species

Evidence

◆ Water vole

◆ Otter

● Faeces

● Shelter

0

0.1

0.2

0.3

0.4

0.5

Kilometres

N

SCALE: See Scale Bar

VERSION: A02

SIZE: A3

DRAWN: CI

PROJECT: 0720281

CHECKED: CG

DATE: 06/08/2025

APPROVED: KG

Figure 8.4 - 8

Spittal - Loch Buidhe - Beauly 400 kV OHL Connection

Protected Species

ERM

Scottish & Southern

Electricity Networks

TRANSMISSION

PROJECTION: British National Grid

Maxar, Microsoft, Sources: Esri, TomTom, Garmin, FAO, NOAA, USGS, © OpenStreetMap contributors, and the GIS User Community, Esri, USGS © NatureScot, Contains Ordnance Survey data © Crown copyright and database right (2025)

Path: \\ukspdrdgisf01\Data\London\Projects\0652629 - SSE Beauly to Loch Buidhe\Maps\0720281 - SLBB - Ecology.aprx / 0720281 - SLBB - EIA - Ecology - Figure 8.4 - Protected Species - A03



Tower Location

Alignment Section A

Temporary Tower Compound Area

Equipotential Zone (EPZ) (Pulling Position)

Temporary Access Track - Trackway Panel

Temporary Access Track - Cut/Fill

Temporary Access Track - Floating

Permanent Access Track - Cut/Fill

Permanent Access Track - Floating

Proposed Development

200m Survey Area

30m Survey Area

Watercourses and Drains - OSMM

Protected Species

Species

Otter

Evidence

Faeces

0 0.1 0.2 0.3 0.4 0.5

Kilometres

N

SCALE: See Scale Bar

VERSION: A02

SIZE: A3

DRAWN: CI

PROJECT: 0720281

CHECKED: CG

DATE: 06/08/2025

APPROVED: KG

Figure 8.4 - 11
Spittal - Loch Buidhe - Beauly 400 kV OHL Connection
Protected Species

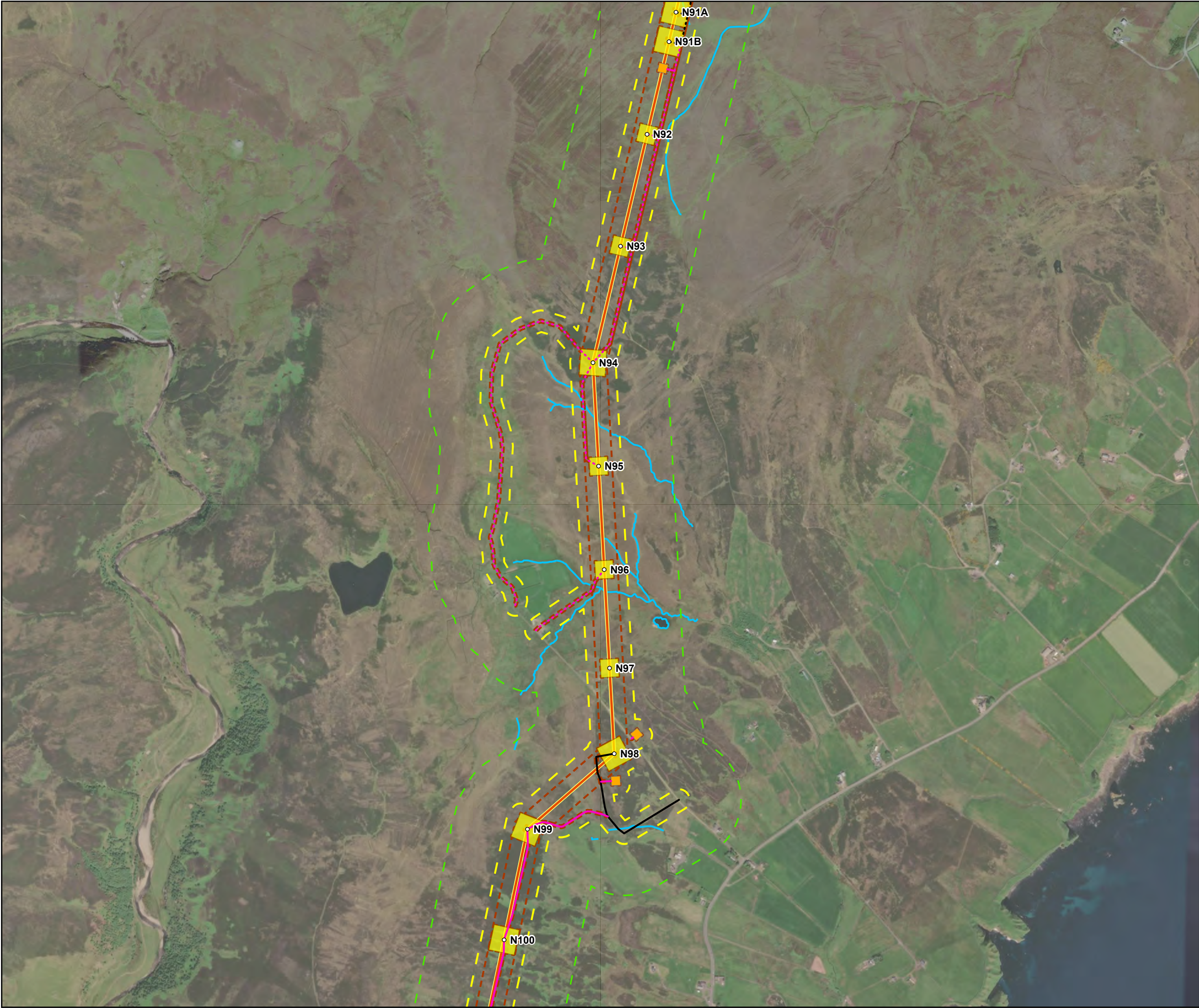
ERM

Scottish & Southern Electricity Networks
TRANSMISSION

PROJECTION: British National Grid

Maxar, Microsoft, Sources: Esri, TomTom, Garmin, FAO, NOAA, USGS, © OpenStreetMap contributors, and the GIS User Community, Esri, USGS © NatureScot, Contains Ordnance Survey data © Crown copyright and database right (2025)

Path: \\uksprd\gis\01\Data\London\Projects\0652629 - SSE Beauly to Loch Buidhe\Maps\0720281 - SLBB - Ecology.aprx / 0720281 - SLBB - EIA - Ecology - Figure 8.4 - Protected Species - A03



○ Tower Location

— Alignment Section A

Temporary Tower Compound Area

Equipotential Zone (EPZ) (Pulling Position)

Temporary Access Track - Trackway Panel

Temporary Access Track - Cut/Fill

Temporary Access Track - Floating

Permanent Access Track - Cut/Fill

Permanent Access Track - Floating

Proposed Development

200m Survey Area

30m Survey Area

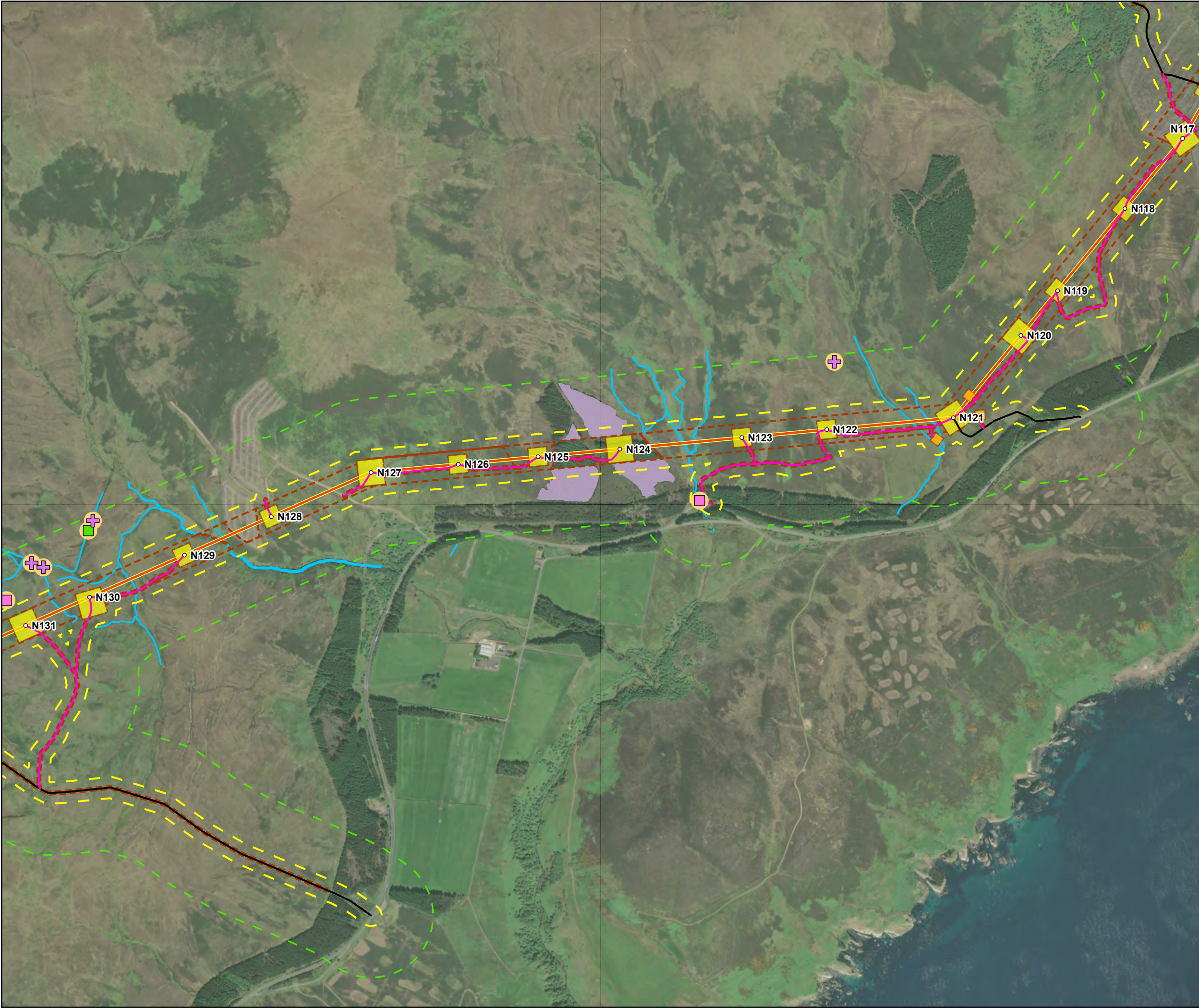
Watercourses and Drains - OSMM

0 0.1 0.2 0.3 0.4 0.5
Kilometres

N

SCALE: See Scale Bar	VERSION: A02
SIZE: A3	DRAWN: CI
PROJECT: 0720281	CHECKED: CG
DATE: 06/08/2025	APPROVED: KG

Figure 8.4 - 13
Spittal - Loch Buidhe - Beauly 400 kV OHL
Connection
Protected Species



Tower Location

Alignment Section A

Temporary Tower Compound Area

Equipotential Zone (EPZ) (Pulling Position)

Temporary Access Track - Trackway Panel

Temporary Access Track - Cut/Fill

Temporary Access Track - Floating

Permanent Access Track - Cut/Fill

Permanent Access Track - Floating

Proposed Development

200m Survey Area

30m Survey Area

Watercourses and Drains - OSMM

Management Felling

Protected Species

Species

Evidence

Common frog

Common lizard

Small newt

Sighting

0

0.1

0.2

0.3

0.4

0.5

Kilometres

N

SCALE: See Scale Bar

VERSION: A02

SIZE: A3

DRAWN: CI

PROJECT: 0720281

CHECKED: CG

DATE: 06/08/2025

APPROVED: KG

Figure 8.4 - 16

Spittal - Loch Buidhe - Beauly 400 kV OHL Connection

Protected Species

ERM

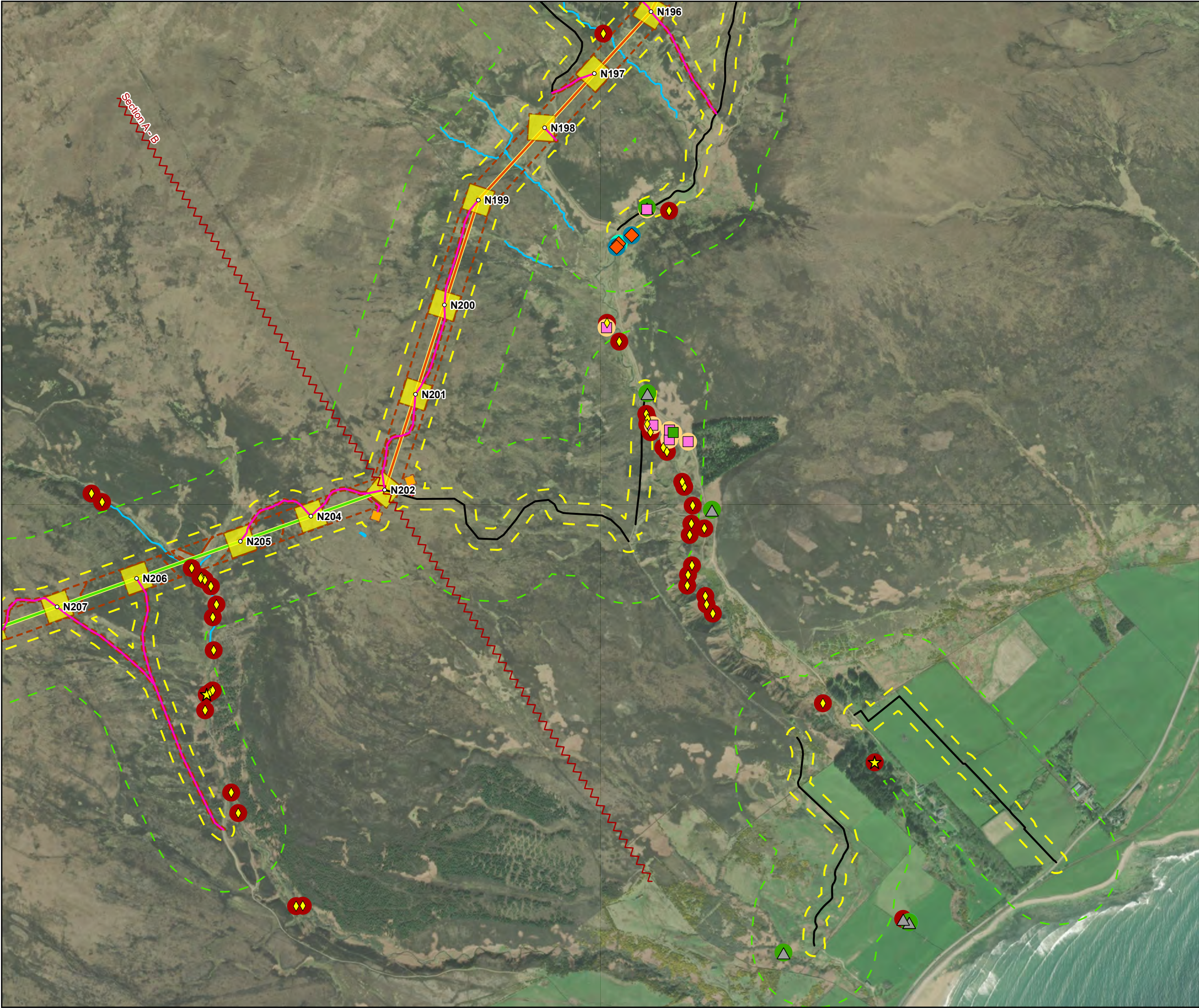
Scottish & Southern Electricity Networks

TRANSMISSION

PROJECTION: British National Grid

Maxar, Microsoft, Sources: Esri, TomTom, Garmin, FAO, NOAA, USGS, © OpenStreetMap contributors, and the GIS User Community, Esri, USGS © NatureScot, Contains Ordnance Survey data © Crown copyright and database right (2025)

Path: \\ukspdrdgisfs01\Data\London\Projects\0652629 - SSE Beauly to Loch Buidhe\Maps\0720281 - SLBB - Ecology.aprx / 0720281 - SLBB - EIA - Ecology - Figure 8.4 - Protected Species - A03



Tower Location

Alignment Section A

Alignment Section B

Temporary Tower Compound Area

Equipotential Zone (EPZ) (Pulling Position)

Temporary Access Track - Trackway Panel

Temporary Access Track - Cut/Fill

Temporary Access Track - Floating

Permanent Access Track - Cut/Fill

Permanent Access Track - Floating

Alignment Section Break

Proposed Development

200m Survey Area

30m Survey Area

Watercourses and Drains - OSMM

Protected Species

Species

Evidence

Badger

Common frog

Common toad

Pine marten

Water vole

Otter

Faeces

Foraging

Shelter

Sighting

Tracks / trails

0

0.1

0.2

0.3

0.4

0.5

Kilometres

N

SCALE: See Scale Bar

VERSION: A02

SIZE: A3

DRAWN: CI

PROJECT: 0720281

CHECKED: CG

DATE: 06/08/2025

APPROVED: KG

Figure 8.4 - 24

Spittal - Loch Buidhe - Beauly 400 kV OHL

Connection

Protected Species

ERM

Scottish & Southern

Electricity Networks

TRANSMISSION

PROJECTION: British National Grid

Maxar, Microsoft, Sources: Esri, TomTom, Garmin, FAO, NOAA, USGS, © OpenStreetMap contributors, and the GIS User Community, Esri, USGS © NatureScot, Contains Ordnance Survey data © Crown copyright and database right (2025)

Path: \\uksprdgisf01\Data\London\Projects\0652629 - SSE Beauly to Loch Buidhe\Maps\0720281 - SLBB - Ecology.aprx / 0720281 - SLBB - EIA - Ecology - Figure 8.4 - Protected Species - A03