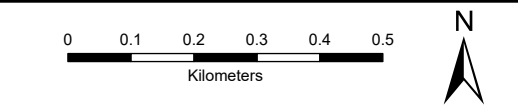


- Tower Location
- Alignment Section A
- Temporary Tower Compound Area
- Equipotential Zone (EPZ) (Pulling Position)
- Temporary Access Track - Trackway Panel
- Temporary Access Track - Floating
- Temporary Access Track - Cut/Fill
- Permanent Access Track - Floating
- Designated sites
- Site Of Special Scientific Interest (SSSI)
- Peat Condition Survey
- Drained
- Modified
- n/a

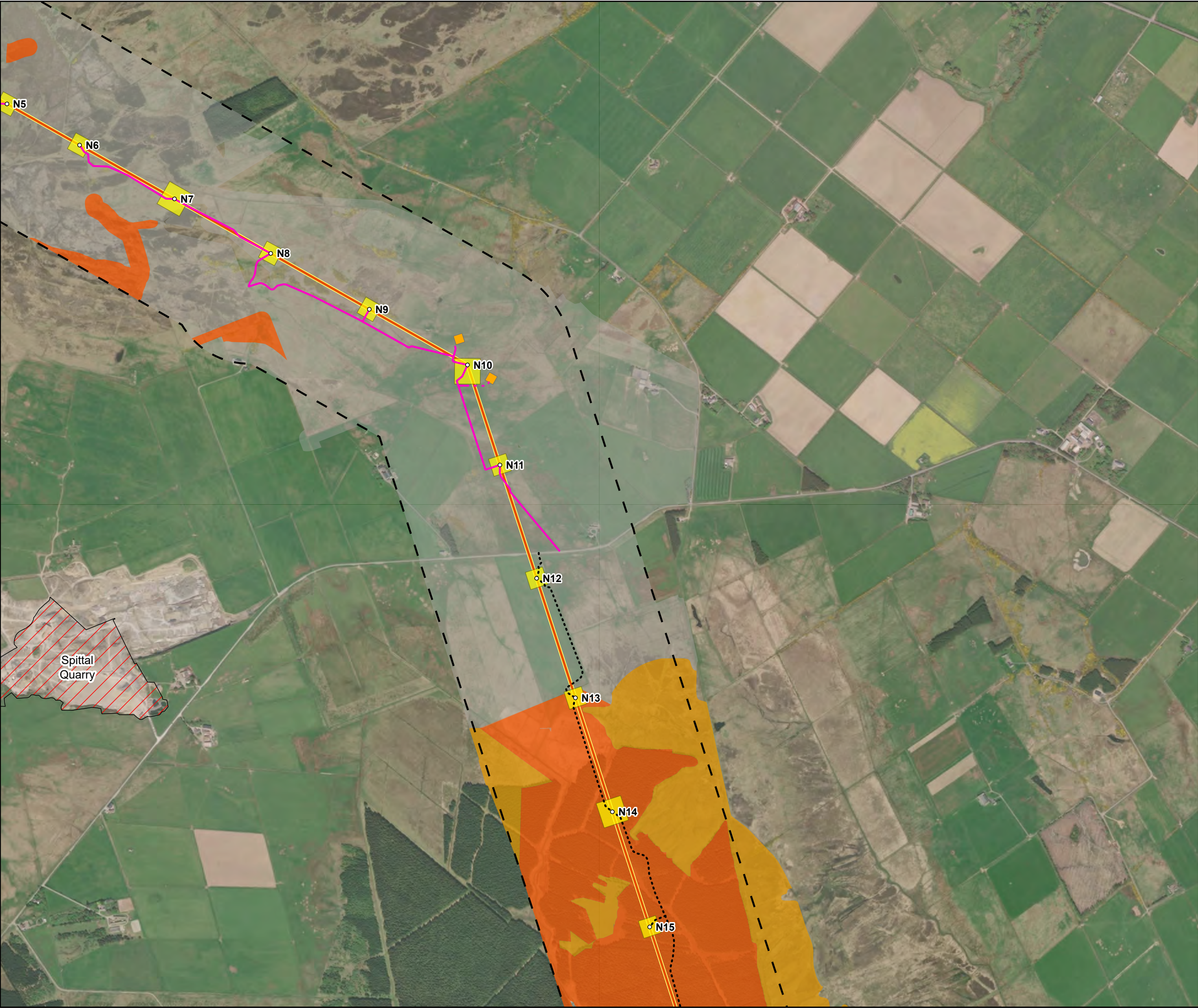
Note: n/a for Peatland Condition indicates non-peatland habitat and/or areas of shallow peat <0.5m



SCALE: See Scale Bar	VERSION: A03
SIZE: A3	DRAWN: CI
PROJECT: 0720281	CHECKED: PW
DATE: 08/08/2025	APPROVED: KG

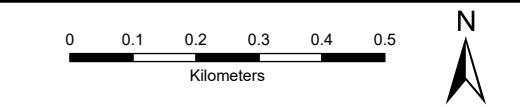
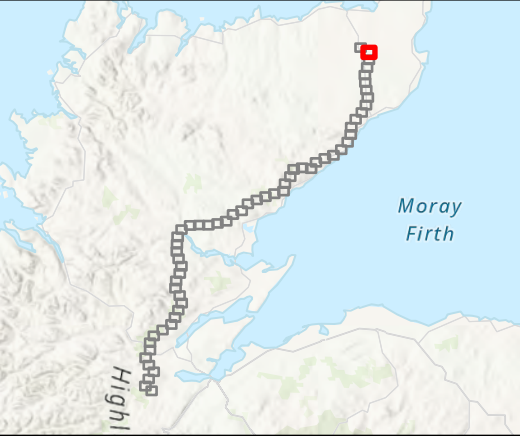
Figure 8.9 - 1
Spittal - Loch Buidhe - Beauly 400 kV OHL
Connection
Peatland Condition Desk Study





- Tower Location
 - Alignment Section A
 - Temporary Tower Compound Area
 - Equipotential Zone (EPZ) (Pulling Position)
 - Temporary Access Track - Trackway Panel
 - Temporary Access Track - Floating
 - Temporary Access Track - Cut/Fill
 - Permanent Access Track - Floating
- Designated sites
- Site Of Special Scientific Interest (SSSI)
- Peat Condition Survey
- Drained
 - Modified
 - n/a

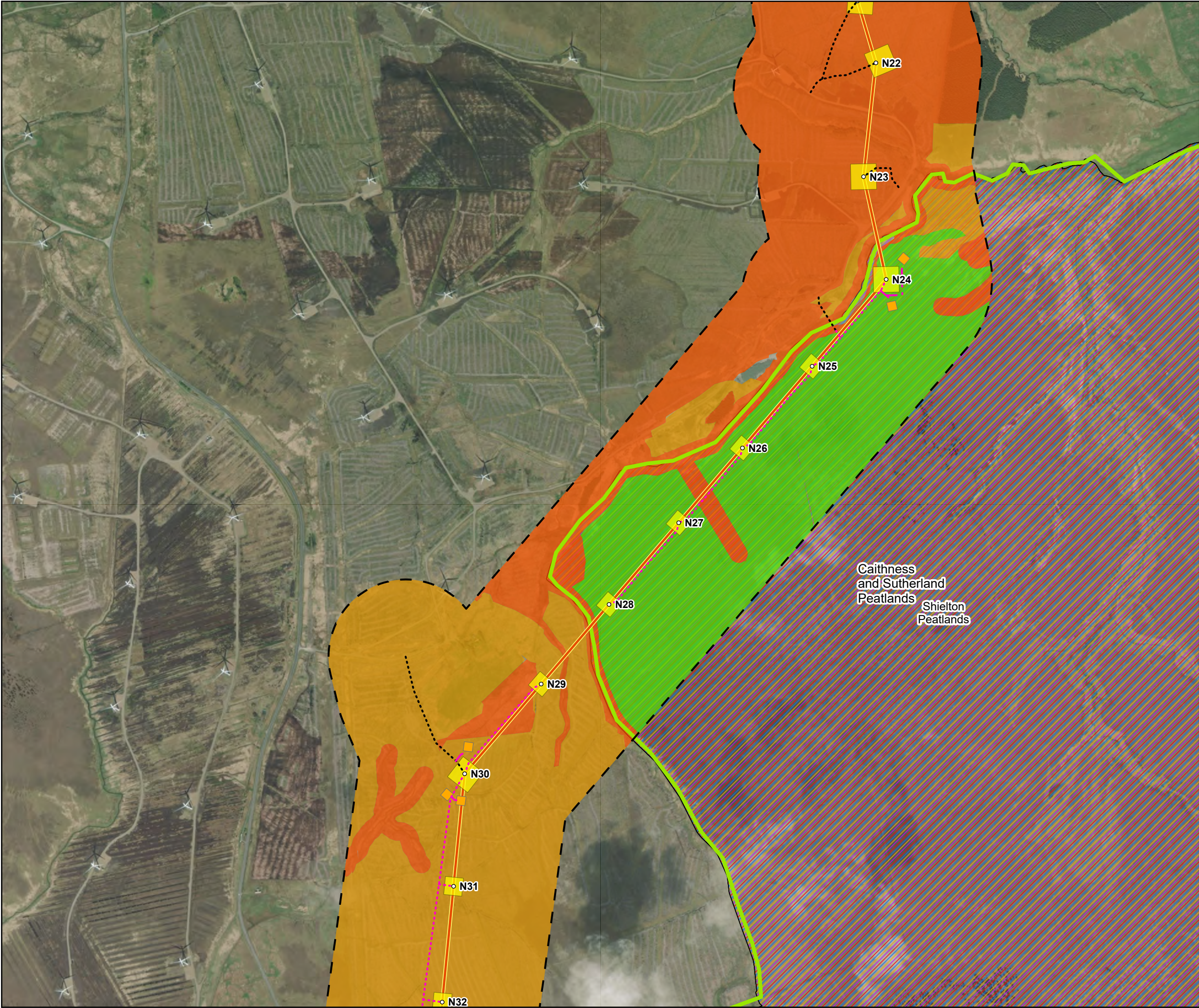
Note: n/a for Peatland Condition indicates non-peatland habitat and/or areas of shallow peat <0.5m



SCALE: See Scale Bar	VERSION: A03
SIZE: A3	DRAWN: CI
PROJECT: 0720281	CHECKED: PW
DATE: 08/08/2025	APPROVED: KG

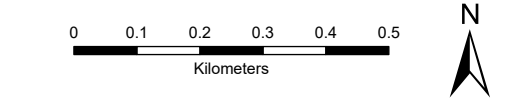
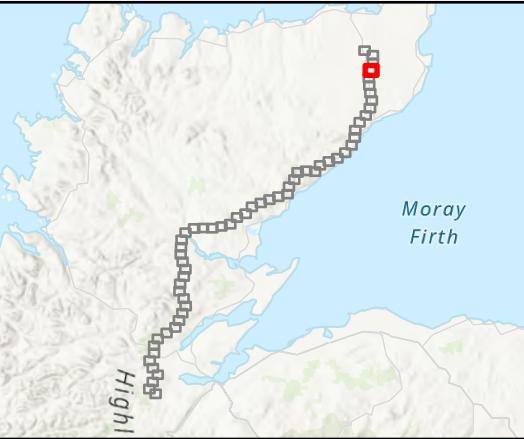
Figure 8.9 - 2
Spittal - Loch Buidhe - Beauly 400 kV OHL
Connection
Peatland Condition Desk Study





- Tower Location
 - Alignment Section A
 - Temporary Tower Compound Area
 - Equipotential Zone (EPZ) (Pulling Position)
 - Temporary Access Track - Trackway Panel
 - Temporary Access Track - Floating
 - Temporary Access Track - Cut/Fill
 - Permanent Access Track - Floating
 - Flow Country World Heritage Site
- Designated sites
- Site Of Special Scientific Interest (SSSI)
 - Special Protection Area (SPA)
 - Special Area Of Conservation (SAC)
 - Ramsar Site
- Peat Condition Survey
- Drained
 - Modified
 - Near Natural
 - n/a

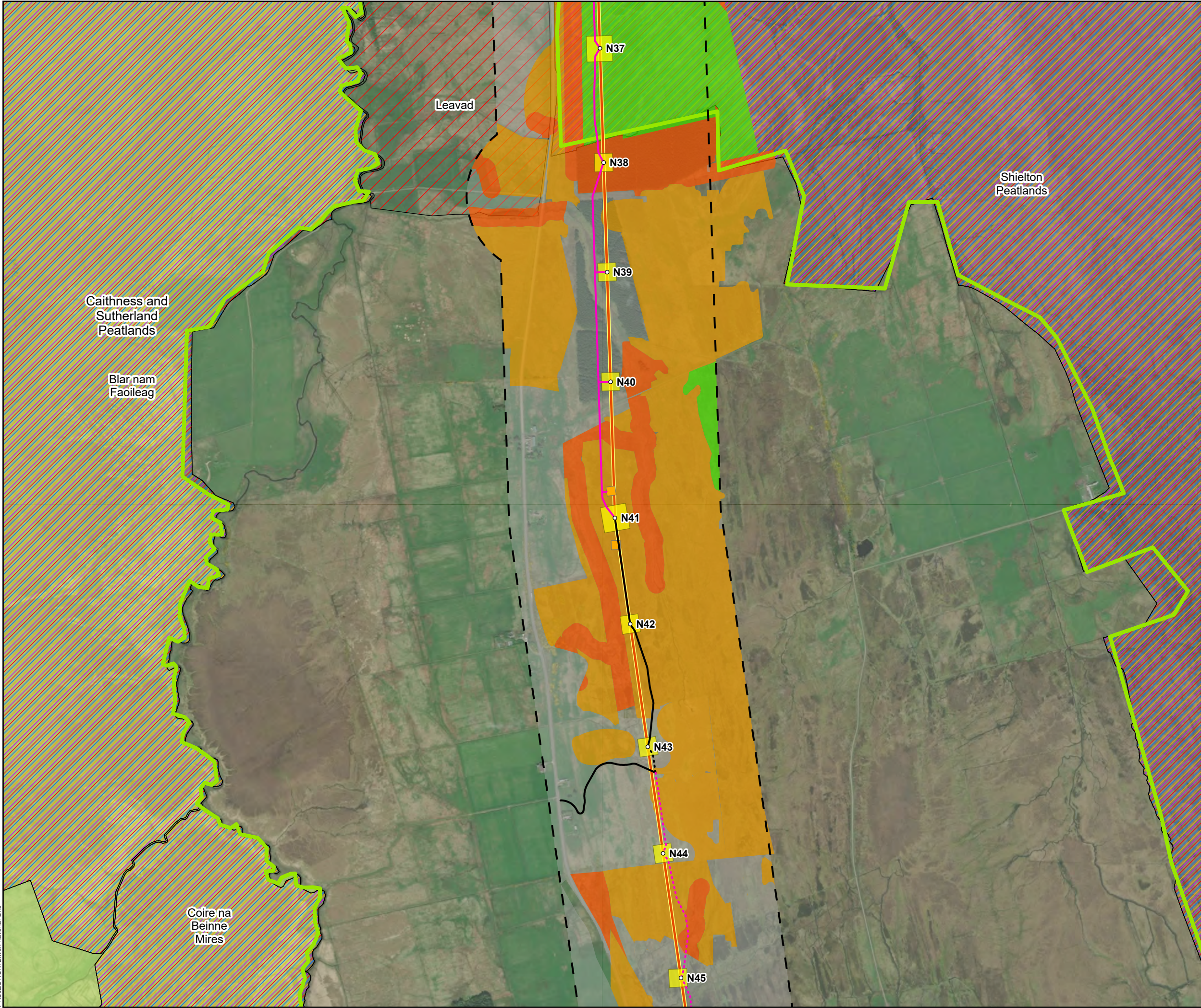
Note: n/a for Peatland Condition indicates non-peatland habitat and/or areas of shallow peat <0.5m



SCALE: See Scale Bar	VERSION: A03
SIZE: A3	DRAWN: CI
PROJECT: 0720281	CHECKED: PW
DATE: 08/08/2025	APPROVED: KG

Figure 8.9 - 4
Spittal - Loch Buidhe - Beauly 400 kV OHL
Connection
Peatland Condition Desk Study





Tower Location

Alignment Section A

Temporary Tower Compound Area

Equipotential Zone (EPZ) (Pulling Position)

Temporary Access Track - Trackway Panel

Temporary Access Track - Floating

Temporary Access Track - Cut/Fill

Permanent Access Track - Floating

Flow Country World Heritage Site

Designated sites

Site Of Special Scientific Interest (SSSI)

Special Protection Area (SPA)

Special Area Of Conservation (SAC)

Ramsar Site

Peat Condition Survey

Drained

Modified

Near Natural

n/a

Note: n/a for Peatland Condition indicates non-peatland habitat and/or areas of shallow peat <0.5m

00.10.20.30.40.50

Kilometers

N

SCALE: See Scale Bar

SIZE: A3

PROJECT: 0720281

DATE: 08/08/2025

VERSION: A03

DRAWN: CI

CHECKED: PW

APPROVED: KG

Figure 8.9 - 6

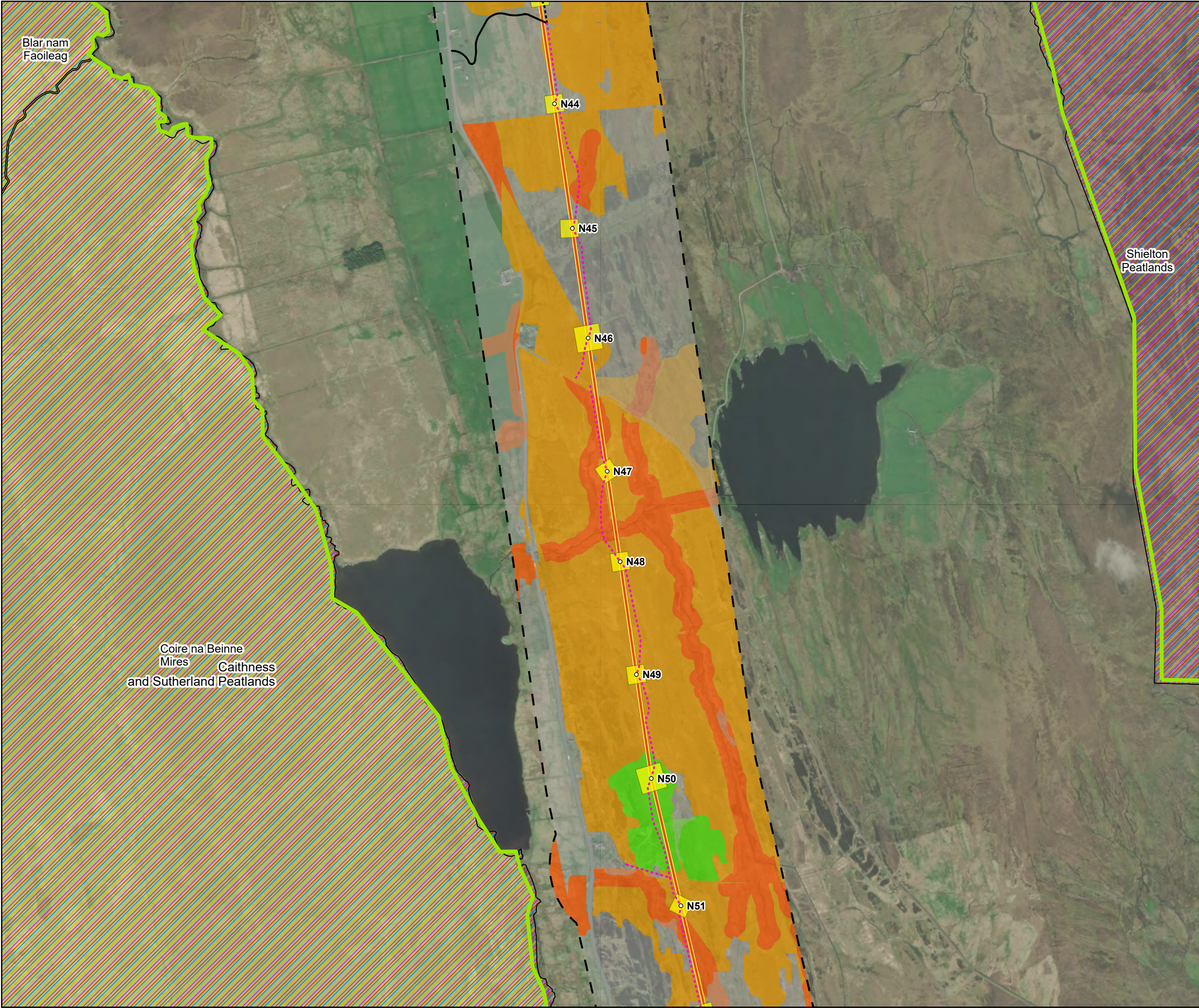
Spittal - Loch Buidhe - Beaully 400 kV OHL Connection

Peatland Condition Desk Study

PROJECTION: British National Grid

Maxar, Microsoft, Sources: Esri, TomTom, Garmin, FAO, NOAA, USGS, © OpenStreetMap contributors, and the GIS User Community, Esri, USGS, © Landmark Information Group Limited and/or its Data Suppliers (All rights reserved 2010). © NatureScot, Contains Ordnance Survey data © Crown copyright and database right (2025)

Path: \\uksprdgsifs01\Data\London\Projects\0652629 - SSE Beaully to Loch Buidhe\Maps\0720281 - SLBB - Ecology.aprx / 0720281 - SLBB - EIA - Ecology - Figure 8.7 - Peatland Condition Desk Study - A03



Tower Location

Alignment Section A

Temporary Tower Compound Area

Equipotential Zone (EPZ) (Pulling Position)

Temporary Access Track - Trackway Panel

Temporary Access Track - Floating

Temporary Access Track - Cut/Fill

Permanent Access Track - Floating

Flow Country World Heritage Site

Designated sites

Site Of Special Scientific Interest (SSSI)

Special Protection Area (SPA)

Special Area Of Conservation (SAC)

Ramsar Site

Peat Condition Survey

Drained

Modified

Near Natural

n/a

Note: n/a for Peatland Condition indicates non-peatland habitat and/or areas of shallow peat <0.5m

0 0.1 0.2 0.3 0.4 0.5
Kilometers

N

SCALE: See Scale Bar	VERSION: A03
SIZE: A3	DRAWN: CI
PROJECT: 0720281	CHECKED: PW
DATE: 08/08/2025	APPROVED: KG

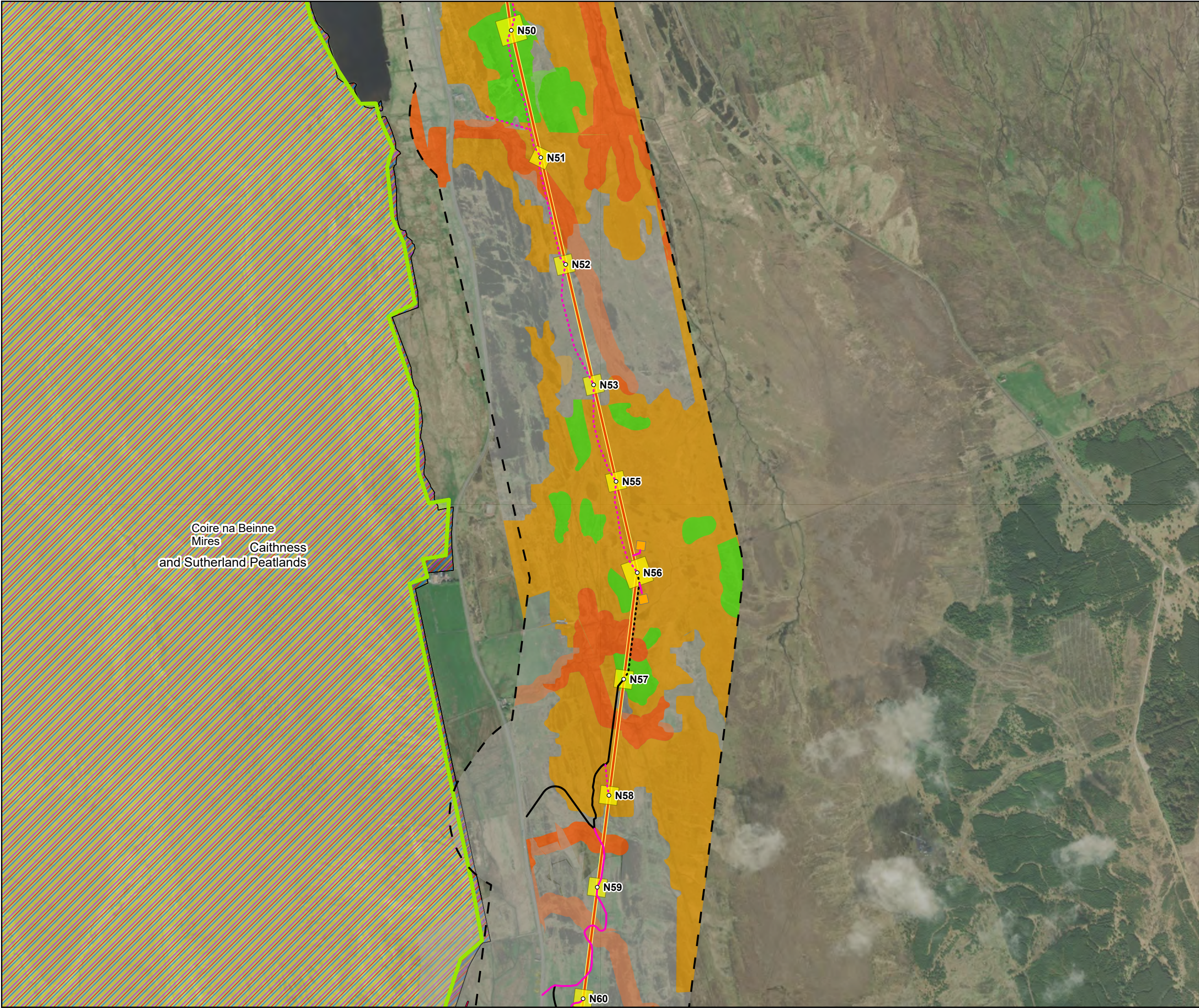
Figure 8.9 - 7
Spittal - Loch Buidhe - Beauly 400 kV OHL Connection
Peatland Condition Desk Study

ERMScottish & Southern Electricity Networks
TRANSMISSION

PROJECTION: British National Grid

Maxar, Microsoft, Sources: Esri, TomTom, Garmin, FAO, NOAA, USGS, © OpenStreetMap contributors, and the GIS User Community, Esri, USGS, © Landmark Information Group Limited and/or its Data Suppliers (All rights reserved 2010).
© NatureScot, Contains Ordnance Survey data © Crown copyright and database right (2025)

Path: \\uksprdgsfs01\Data\London\Projects\0652629 - SSE Beauly to Loch Buidhe\Maps\0720281 - SLBB - Ecology.aprx / 0720281 - SLBB - EIA - Ecology - Figure 8.7 - Peatland Condition Desk Study - A03



Tower Location

Alignment Section A

Special Arrangement

Temporary Tower Compound Area

Equipotential Zone (EPZ) (Pulling Position)

Temporary Access Track - Trackway Panel

Temporary Access Track - Floating

Temporary Access Track - Cut/Fill

Permanent Access Track - Floating

Flow Country World Heritage Site

Designated sites

Site Of Special Scientific Interest (SSSI)

Special Protection Area (SPA)

Special Area Of Conservation (SAC)

Ramsar Site

Peat Condition Survey

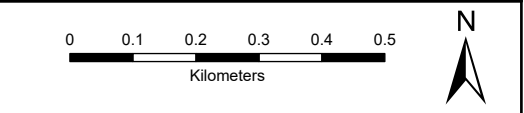
Drained

Modified

Near Natural

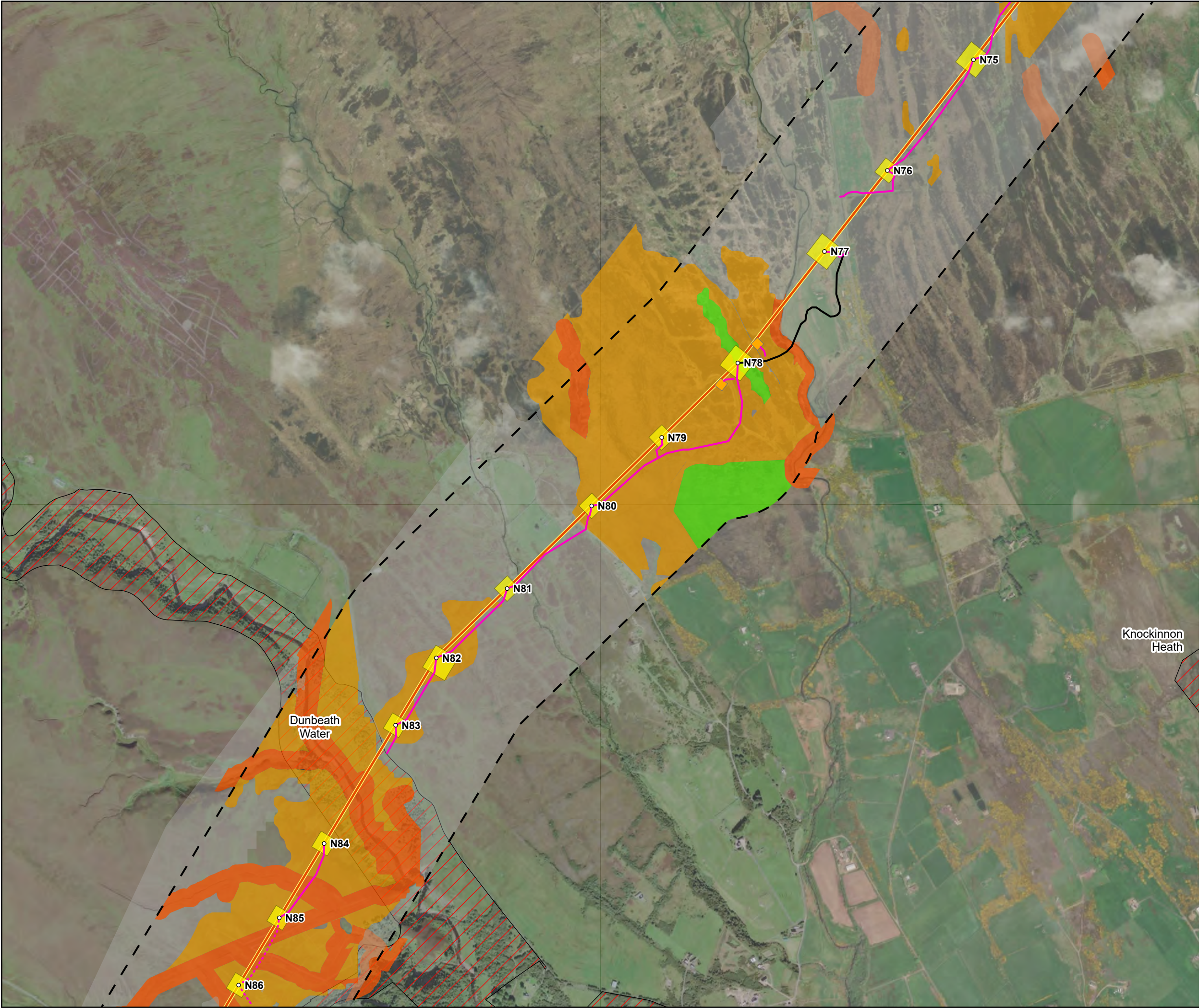
n/a

Note: n/a for Peatland Condition indicates non-peatland habitat and/or areas of shallow peat <0.5m



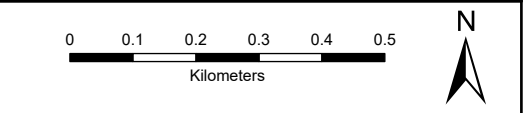
SCALE: See Scale Bar	VERSION: A03
SIZE: A3	DRAWN: CI
PROJECT: 0720281	CHECKED: PW
DATE: 08/08/2025	APPROVED: KG

Figure 8.9 - 8
Spittal - Loch Buidhe - Beauly 400 kV OHL Connection
Peatland Condition Desk Study



- Tower Location
- Alignment Section A
- Temporary Tower Compound Area
- Equipotential Zone (EPZ) (Pulling Position)
- - - Temporary Access Track - Trackway Panel
- - - Temporary Access Track - Floating
- Temporary Access Track - Cut/Fill
- - - Permanent Access Track - Floating
- Designated sites
- ▨ Site Of Special Scientific Interest (SSSI)
- Peat Condition Survey
- Drained
- Modified
- Near Natural
- n/a

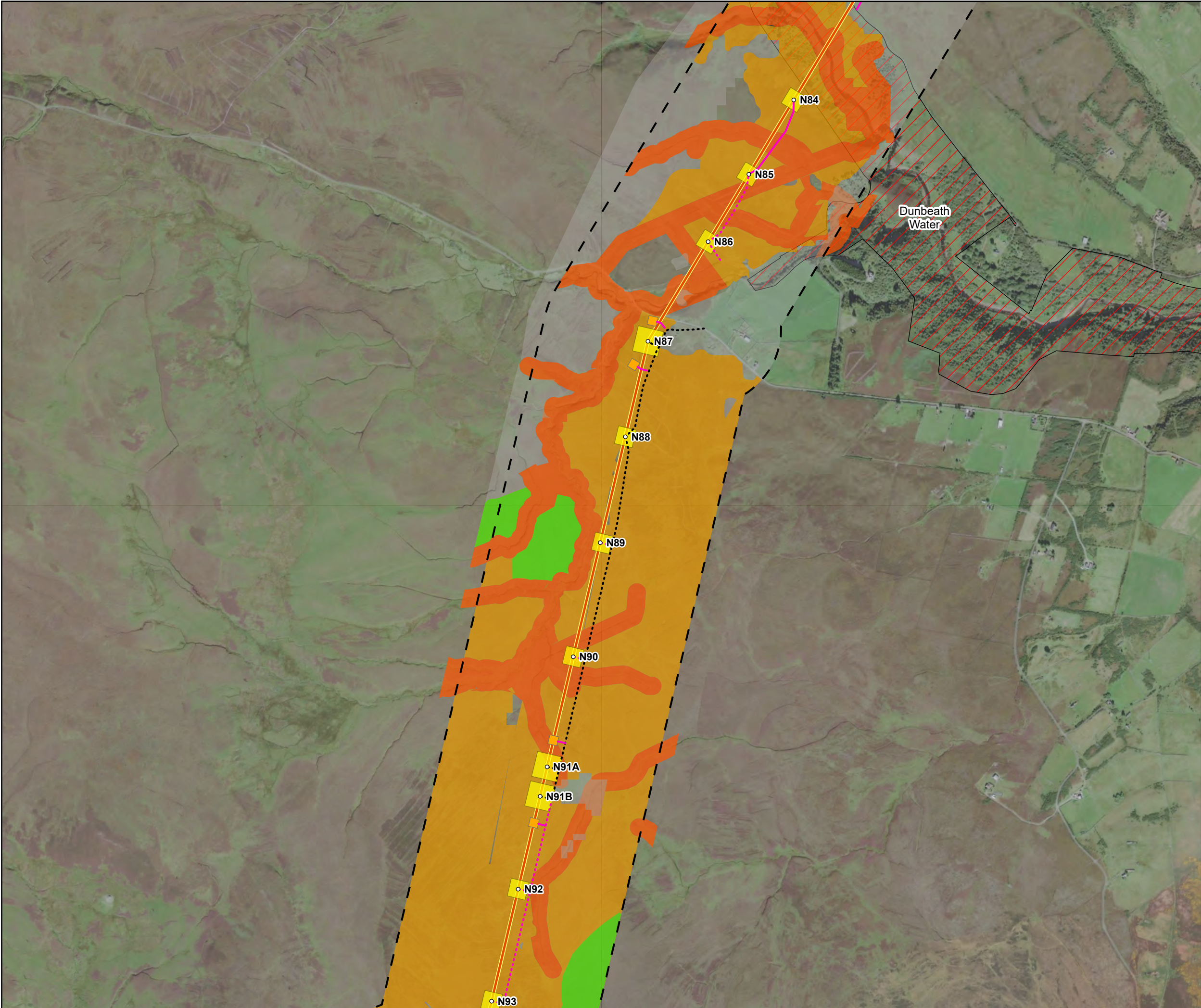
Note: n/a for Peatland Condition indicates non-peatland habitat and/or areas of shallow peat <0.5m



SCALE: See Scale Bar	VERSION: A03
SIZE: A3	DRAWN: CI
PROJECT: 0720281	CHECKED: PW
DATE: 08/08/2025	APPROVED: KG

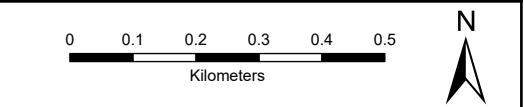
Figure 8.9 - 11
Spittal - Loch Buidhe - Beauly 400 kV OHL
Connection
Peatland Condition Desk Study





- Tower Location
 - Alignment Section A
 - Temporary Tower Compound Area
 - Equipotential Zone (EPZ) (Pulling Position)
 - Temporary Access Track - Trackway Panel
 - Temporary Access Track - Floating
 - Temporary Access Track - Cut/Fill
 - Permanent Access Track - Floating
- Designated sites
- Site Of Special Scientific Interest (SSSI)
- Peat Condition Survey
- Drained
 - Modified
 - Near Natural
 - n/a

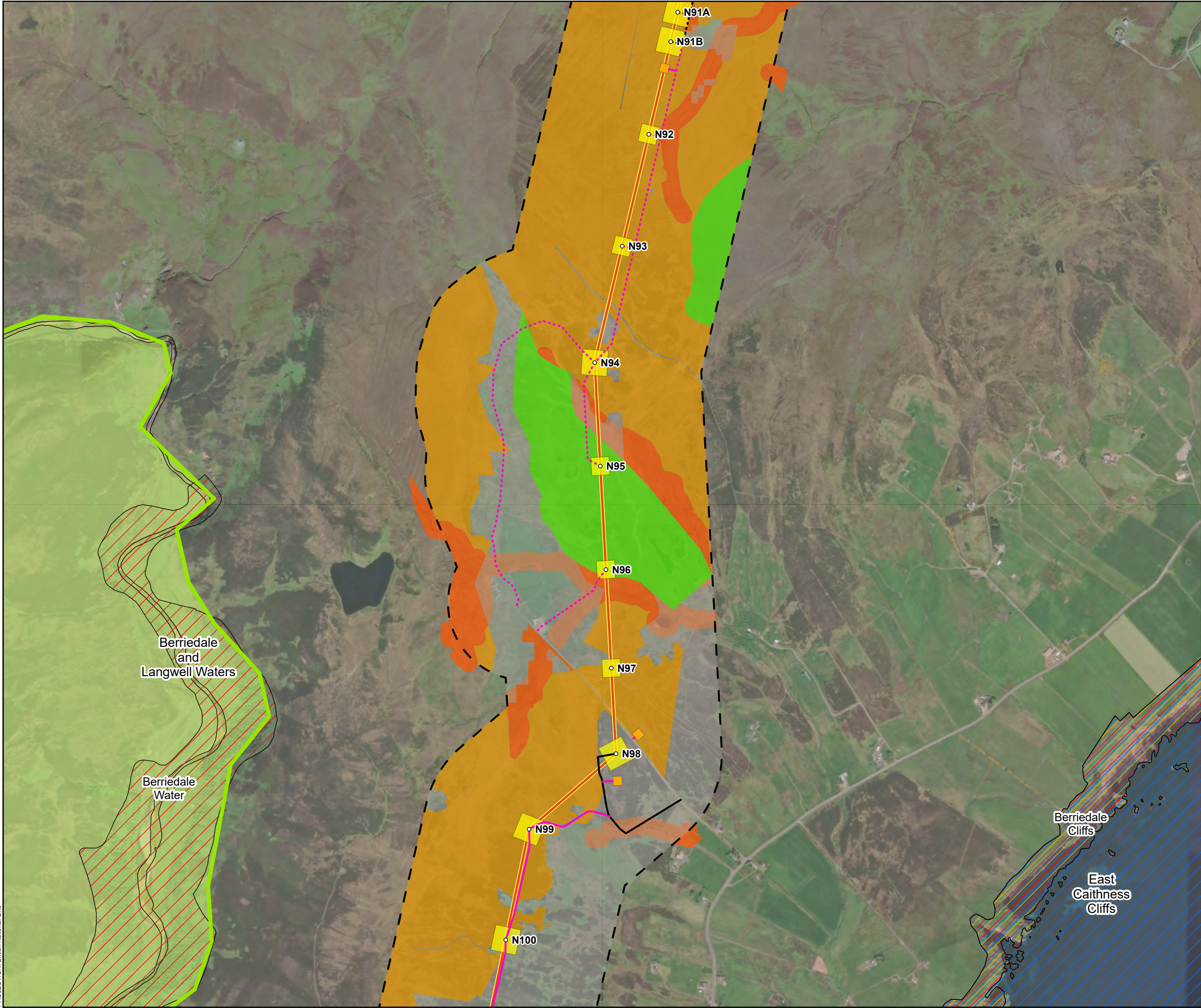
Note: n/a for Peatland Condition indicates non-peatland habitat and/or areas of shallow peat <0.5m



SCALE: See Scale Bar	VERSION: A03
SIZE: A3	DRAWN: CI
PROJECT: 0720281	CHECKED: PW
DATE: 08/08/2025	APPROVED: KG

Figure 8.9 - 12
Spittal - Loch Buidhe - Beaully 400 kV OHL
Connection
Peatland Condition Desk Study





Tower Location

Alignment Section A

Temporary Tower Compound Area

Equipotential Zone (EPZ) (Pulling Position)

Temporary Access Track - Trackway Panel

Temporary Access Track - Floating

Temporary Access Track - Cut/Fill

Permanent Access Track - Floating

Flow Country World Heritage Site

Designated sites

Site Of Special Scientific Interest (SSSI)

Special Protection Area (SPA)

Special Area Of Conservation (SAC)

Peat Condition Survey

Drained

Modified

Near Natural

n/a

Note: n/a for Peatland Condition indicates non-peatland habitat and/or areas of shallow peat <0.5m

0

0.1

0.2

0.3

0.4

0.5

Kilometers

N

SCALE: See Scale Bar

SIZE: A3

PROJECT: 0720281

DATE: 08/08/2025

VERSION: A03

DRAWN: CI

CHECKED: PW

APPROVED: KG

Figure 8.9 - 13

Spittal - Loch Buidhe - Beauly 400 kV OHL Connection

Peatland Condition Desk Study

ERM

Scottish & Southern

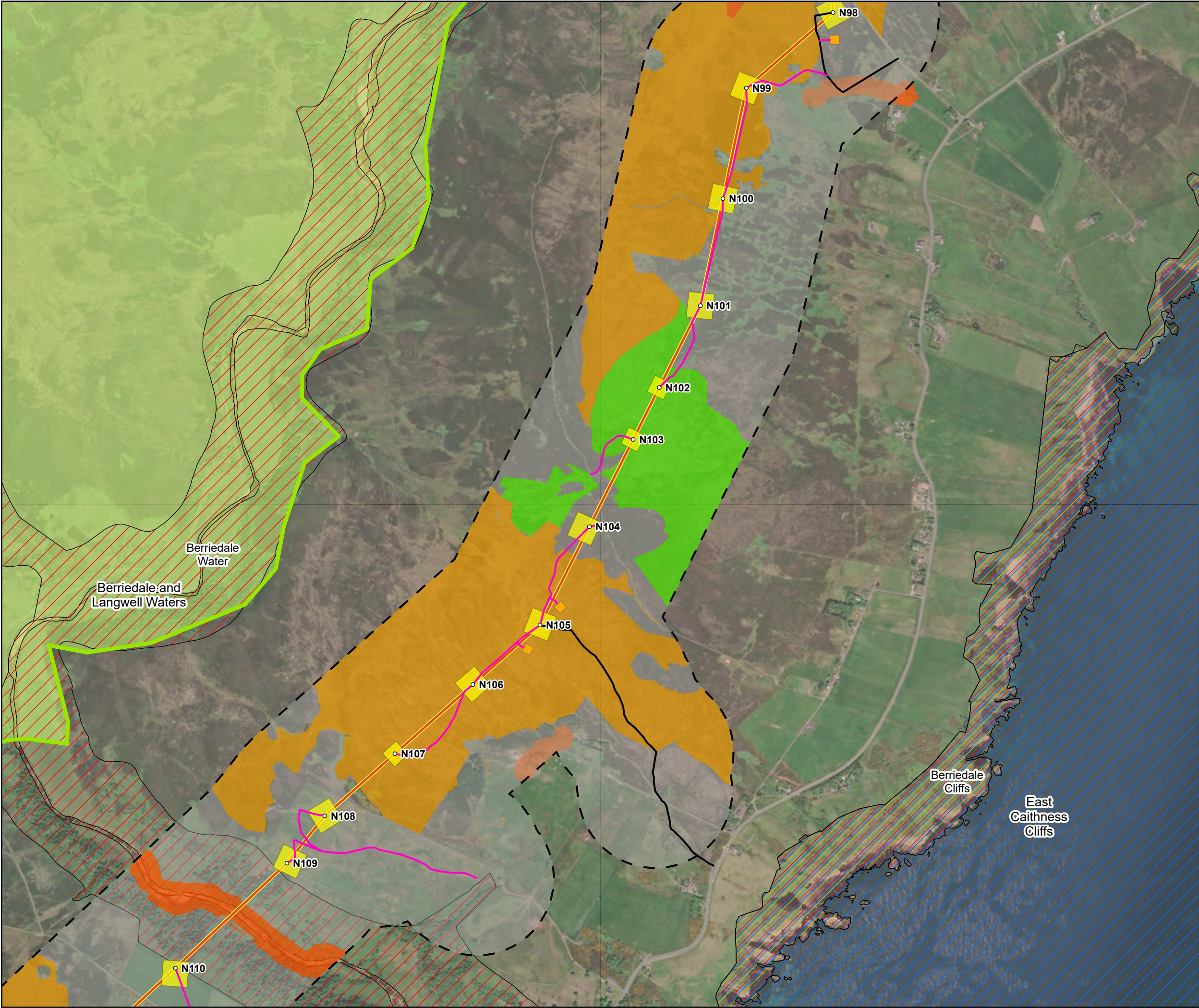
Electricity Networks

TRANSMISSION

PROJECTION: British National Grid

Maxar, Microsoft, Sources: Esri, TomTom, Garmin, FAO, NOAA, USGS, © OpenStreetMap contributors, and the GIS User Community, Esri, USGS; © Landmark Information Group Limited and/or its Data Suppliers (All rights reserved 2010).

Path: \\uksprdgisf01\Data\London\Projects\0652629 - SSE Beauly to Loch Buidhe\Maps\0720281 - SLBB - Ecology.aprx / 0720281 - SLBB - EIA - Ecology - Figure 8.7 - Peatland Condition Desk Study - A03



Tower Location

Alignment Section A

Temporary Tower Compound Area

Equipotential Zone (EPZ) (Pulling Position)

Temporary Access Track - Trackway Panel

Temporary Access Track - Floating

Temporary Access Track - Cut/Fill

Permanent Access Track - Floating

Flow Country World Heritage Site

Designated sites

Site Of Special Scientific Interest (SSSI)

Special Protection Area (SPA)

Special Area Of Conservation (SAC)

Peat Condition Survey

Drained

Modified

Near Natural

n/a

Note: n/a for Peatland Condition indicates non-peatland habitat and/or areas of shallow peat <0.5m

00.10.20.30.40.5

Kilometers

N

SCALE: See Scale Bar

VERSION: A03

SIZE: A3

DRAWN: CI

PROJECT: 0720281

CHECKED: PW

DATE: 08/08/2025

APPROVED: KG

Figure 8.9 - 14
Spittal - Loch Buidhe - Beauly 400 kV OHL
Connection
Peatland Condition Desk Study

ERM

Scottish & Southern

Electricity Networks

TRANSMISSION

PROJECTION: British National Grid

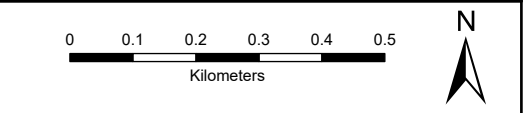
Maxar, Microsoft, Sources: Esri, TomTom, Garmin, FAO, NOAA, USGS, © OpenStreetMap contributors, and the GIS User Community, Esri, USGS; © Landmark Information Group Limited and/or its Data Suppliers (All rights reserved 2010). © NatureScot, Contains Ordnance Survey data © Crown copyright and database right (2025)

Path: \\uksprdgis01\Data\London\Projects\0652629 - SSE Beauly to Loch Buidhe\Maps\0720281 - SLBB - Ecology.aprx / 0720281 - SLBB - EIA - Ecology - Figure 8.7 - Peatland Condition Desk Study - A03



- Tower Location
- Alignment Section A
- Temporary Tower Compound Area
- Equipotential Zone (EPZ) (Pulling Position)
- Temporary Access Track - Trackway Panel
- Temporary Access Track - Floating
- Temporary Access Track - Cut/Fill
- Permanent Access Track - Floating
- Flow Country World Heritage Site
- Designated sites
 - Site Of Special Scientific Interest (SSSI)
 - Special Protection Area (SPA)
 - Special Area Of Conservation (SAC)
- Peat Condition Survey
 - Drained
 - Modified
 - n/a

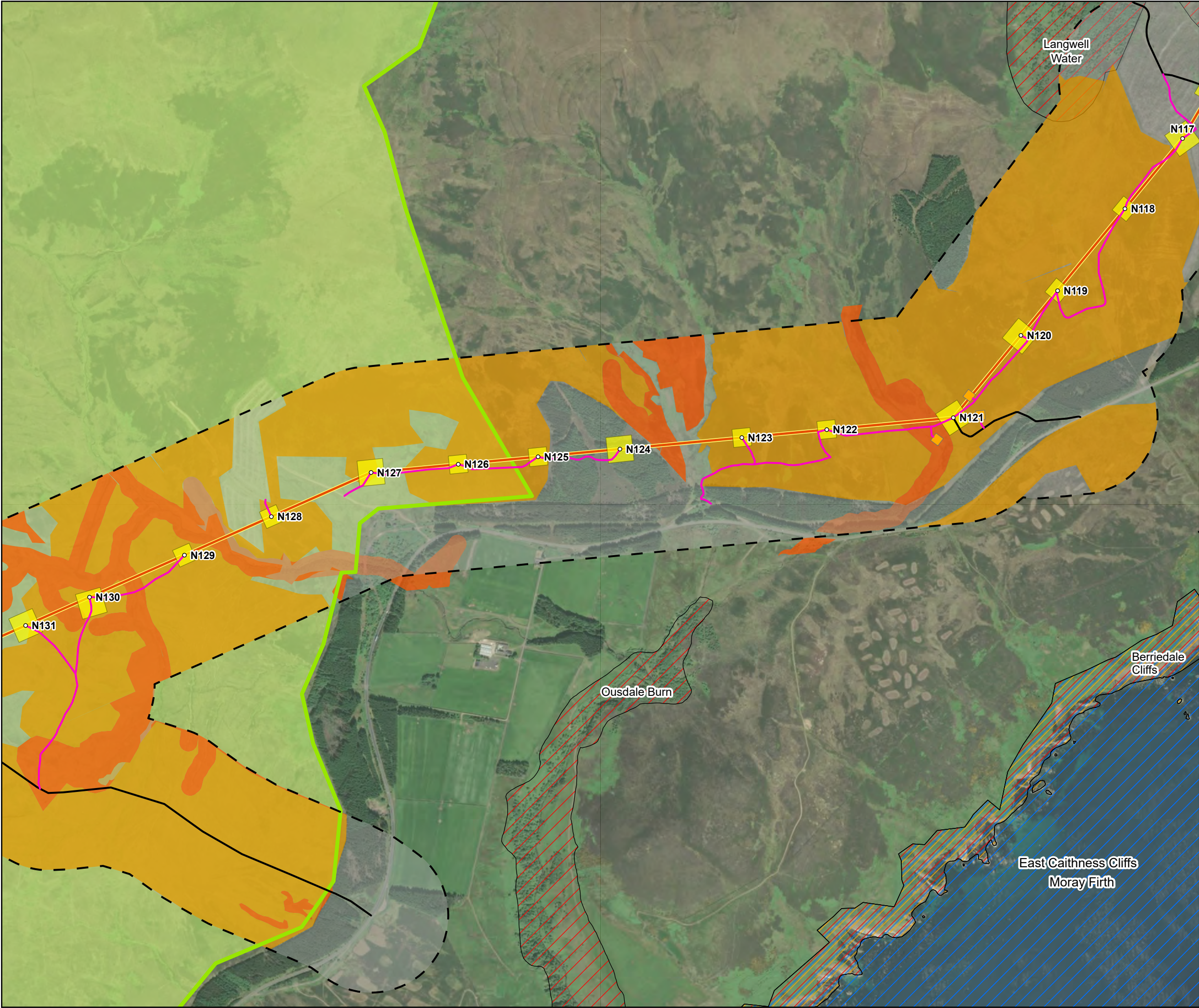
Note: n/a for Peatland Condition indicates non-peatland habitat and/or areas of shallow peat <0.5m



SCALE: See Scale Bar	VERSION: A03
SIZE: A3	DRAWN: CI
PROJECT: 0720281	CHECKED: PW
DATE: 08/08/2025	APPROVED: KG

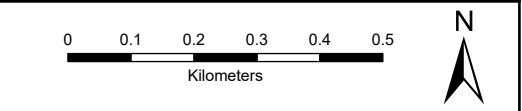
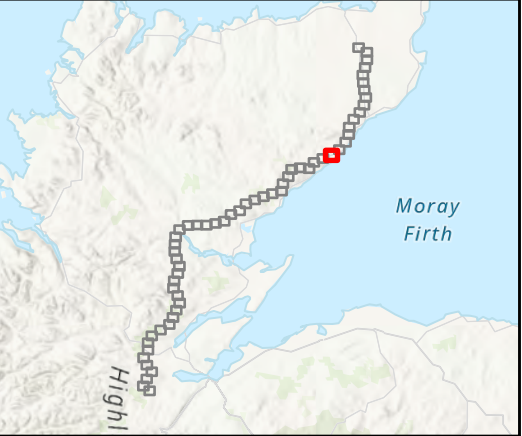
Figure 8.9 - 15
Spittal - Loch Buidhe - Beauly 400 kV OHL
Connection
Peatland Condition Desk Study





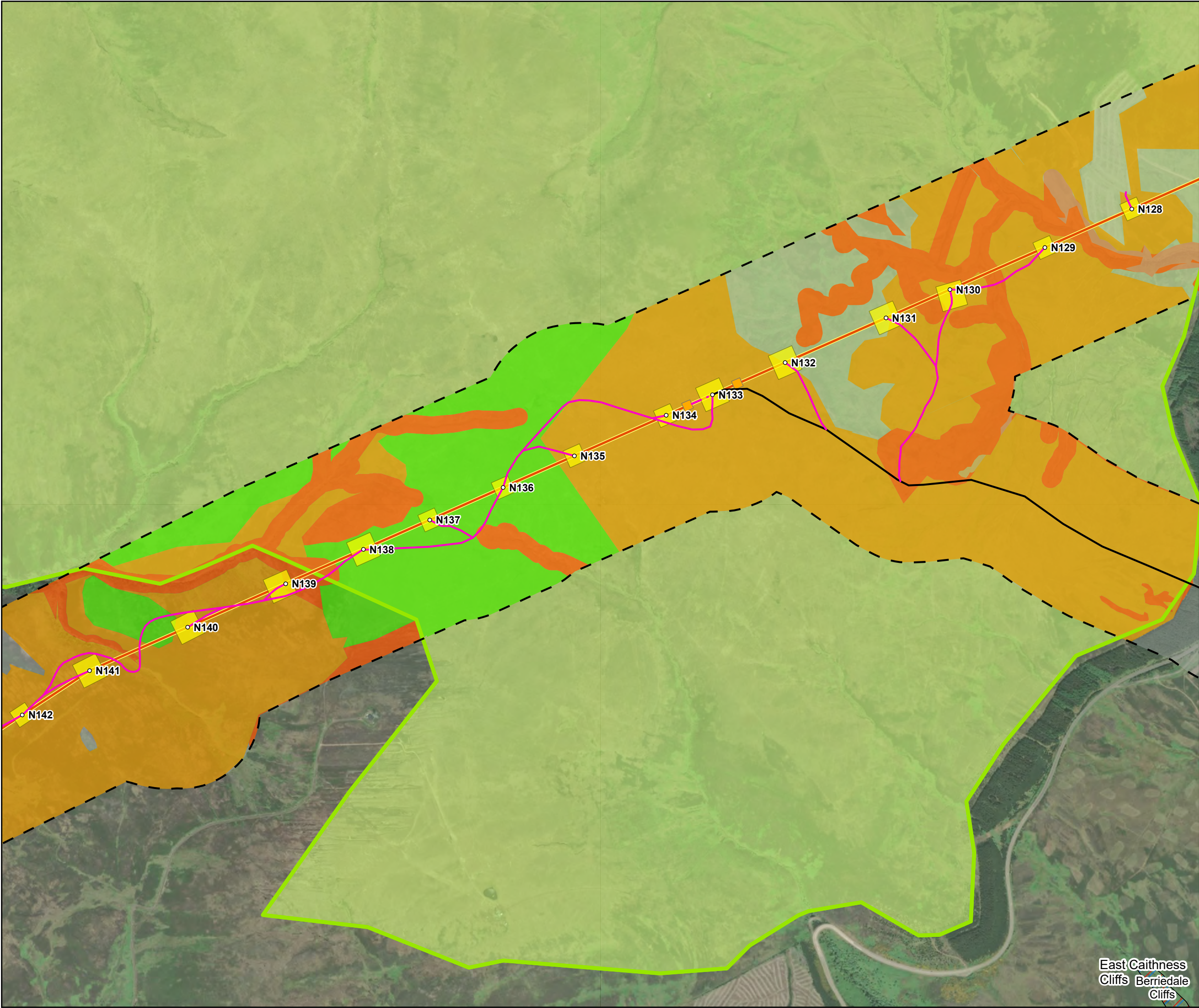
- Tower Location
 - Alignment Section A
 - Temporary Tower Compound Area
 - Equipotential Zone (EPZ) (Pulling Position)
 - Temporary Access Track - Trackway Panel
 - Temporary Access Track - Floating
 - Temporary Access Track - Cut/Fill
 - Permanent Access Track - Floating
 - Flow Country World Heritage Site
- Designated sites
- Site Of Special Scientific Interest (SSSI)
 - Special Protection Area (SPA)
 - Special Area Of Conservation (SAC)
- Peat Condition Survey
- Drained
 - Modified
 - n/a

Note: n/a for Peatland Condition indicates non-peatland habitat and/or areas of shallow peat <0.5m



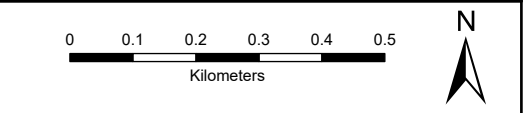
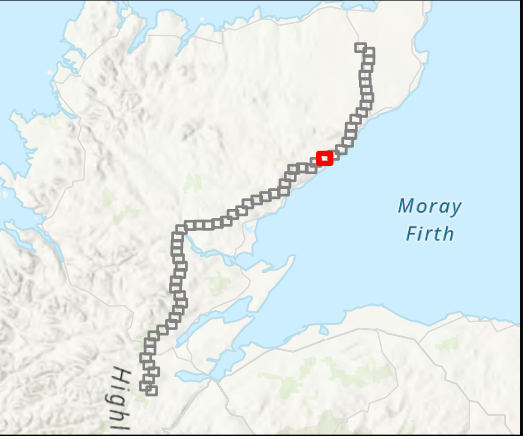
SCALE: See Scale Bar	VERSION: A03
SIZE: A3	DRAWN: CI
PROJECT: 0720281	CHECKED: PW
DATE: 08/08/2025	APPROVED: KG

Figure 8.9 - 16
Spittal - Loch Buidhe - Beauly 400 kV OHL Connection
Peatland Condition Desk Study



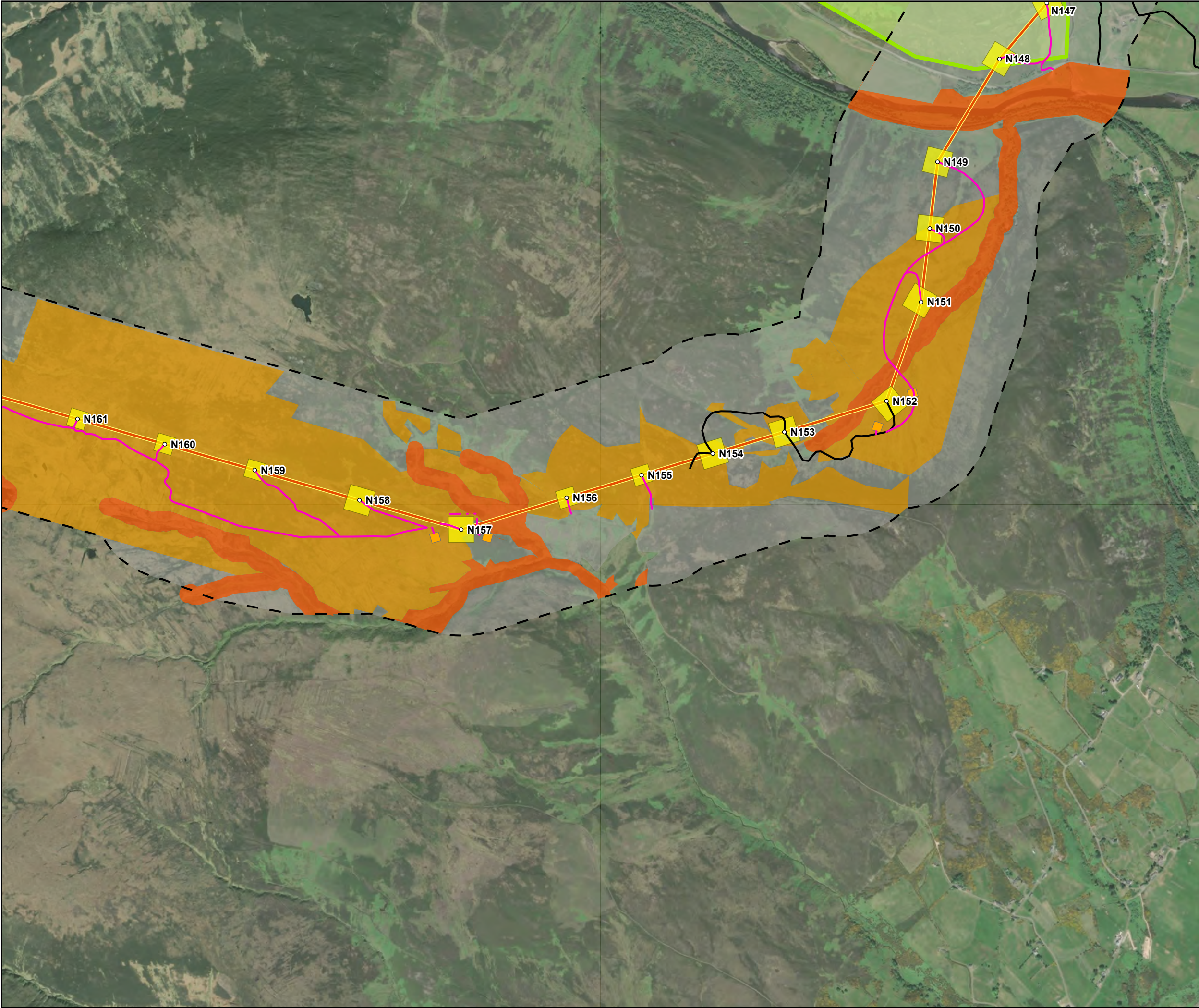
- Tower Location
- Alignment Section A
- Temporary Tower Compound Area
- Equipotential Zone (EPZ) (Pulling Position)
- Temporary Access Track - Trackway Panel
- Temporary Access Track - Floating
- Temporary Access Track - Cut/Fill
- Permanent Access Track - Floating
- Flow Country World Heritage Site
- Designated sites
 - Site Of Special Scientific Interest (SSSI)
 - Special Protection Area (SPA)
- Peat Condition Survey
 - Drained
 - Modified
 - Near Natural
 - n/a

Note: n/a for Peatland Condition indicates non-peatland habitat and/or areas of shallow peat <0.5m



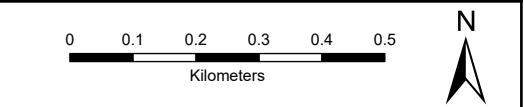
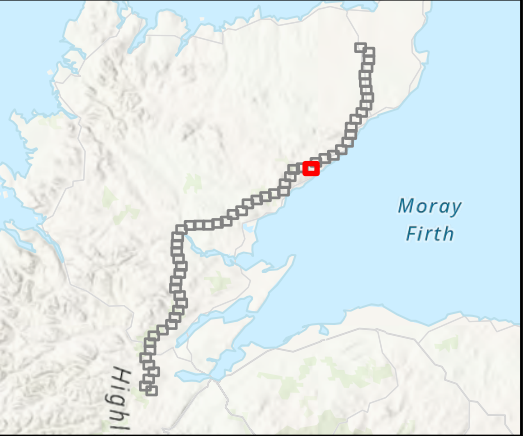
SCALE: See Scale Bar	VERSION: A03
SIZE: A3	DRAWN: CI
PROJECT: 0720281	CHECKED: PW
DATE: 08/08/2025	APPROVED: KG

Figure 8.9 - 17
Spittal - Loch Buidhe - Beauly 400 kV OHL
Connection
Peatland Condition Desk Study



- Tower Location
 - Alignment Section A
 - Temporary Tower Compound Area
 - Equipotential Zone (EPZ) (Pulling Position)
 - - - Temporary Access Track - Trackway Panel
 - ... Temporary Access Track - Floating
 - Temporary Access Track - Cut/Fill
 - - - Permanent Access Track - Floating
 - Flow Country World Heritage Site
- Peat Condition Survey
- Drained
 - Modified
 - n/a

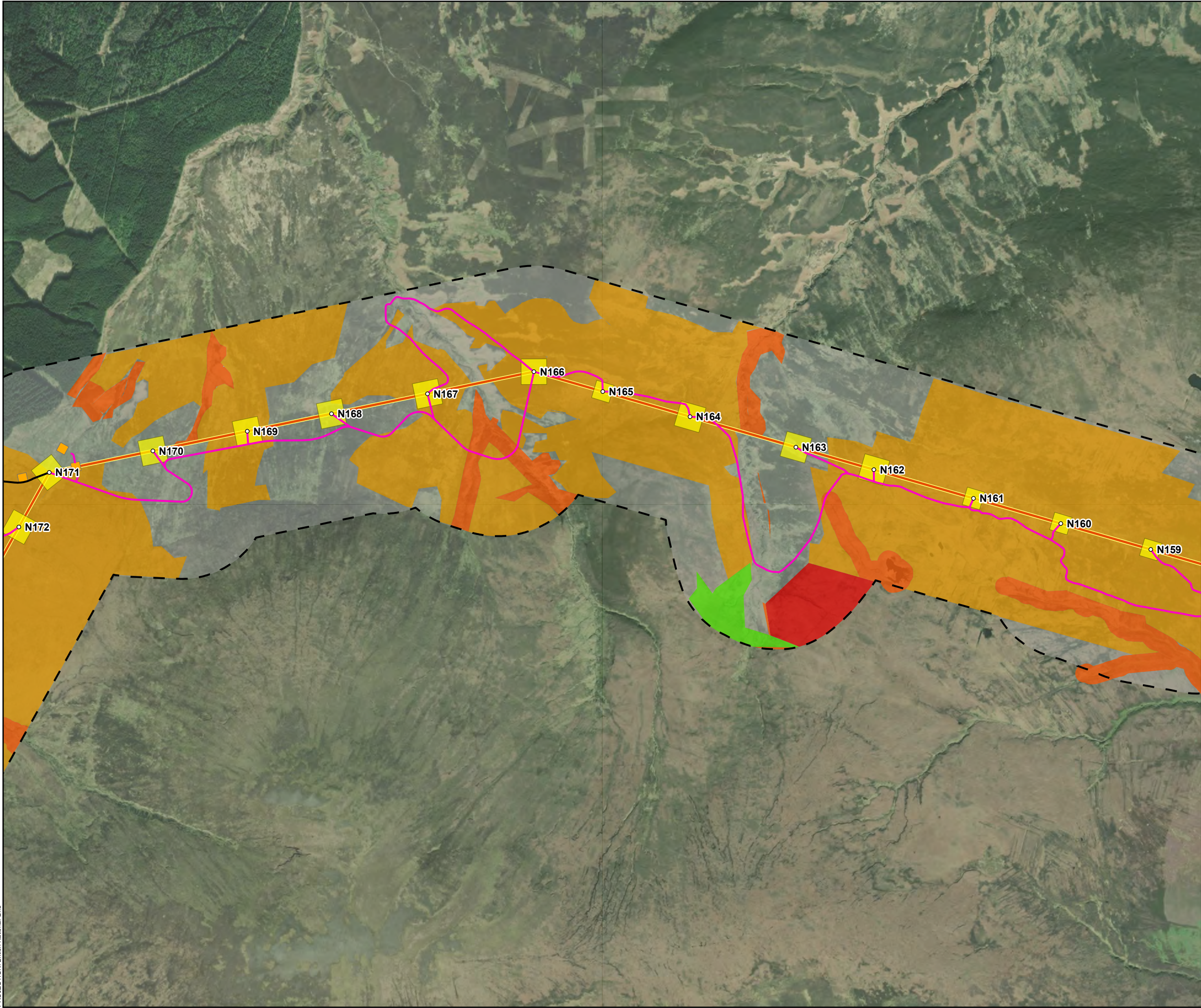
Note: n/a for Peatland Condition indicates non-peatland habitat and/or areas of shallow peat <0.5m



SCALE: See Scale Bar	VERSION: A03
SIZE: A3	DRAWN: CI
PROJECT: 0720281	CHECKED: PW
DATE: 08/08/2025	APPROVED: KG

Figure 8.9 - 19
Spittal - Loch Buidhe - Beauly 400 kV OHL
Connection
Peatland Condition Desk Study





Tower Location

Alignment Section A

Temporary Tower Compound Area

Equipotential Zone (EPZ) (Pulling Position)

Temporary Access Track - Trackway Panel

Temporary Access Track - Floating

Temporary Access Track - Cut/Fill

Permanent Access Track - Floating

Peat Condition Survey

Actively Eroding

Drained

Modified

Near Natural

n/a

Note: n/a for Peatland Condition indicates non-peatland habitat and/or areas of shallow peat <0.5m

High

Moray Firth

0

0.1

0.2

0.3

0.4

0.5

Kilometers

N

SCALE: See Scale Bar

VERSION: A03

SIZE: A3

DRAWN: CI

PROJECT: 0720281

CHECKED: PW

DATE: 08/08/2025

APPROVED: KG

Figure 8.9 - 20

Spittal - Loch Buidhe - Beauly 400 kV OHL Connection

Peatland Condition Desk Study

ERM

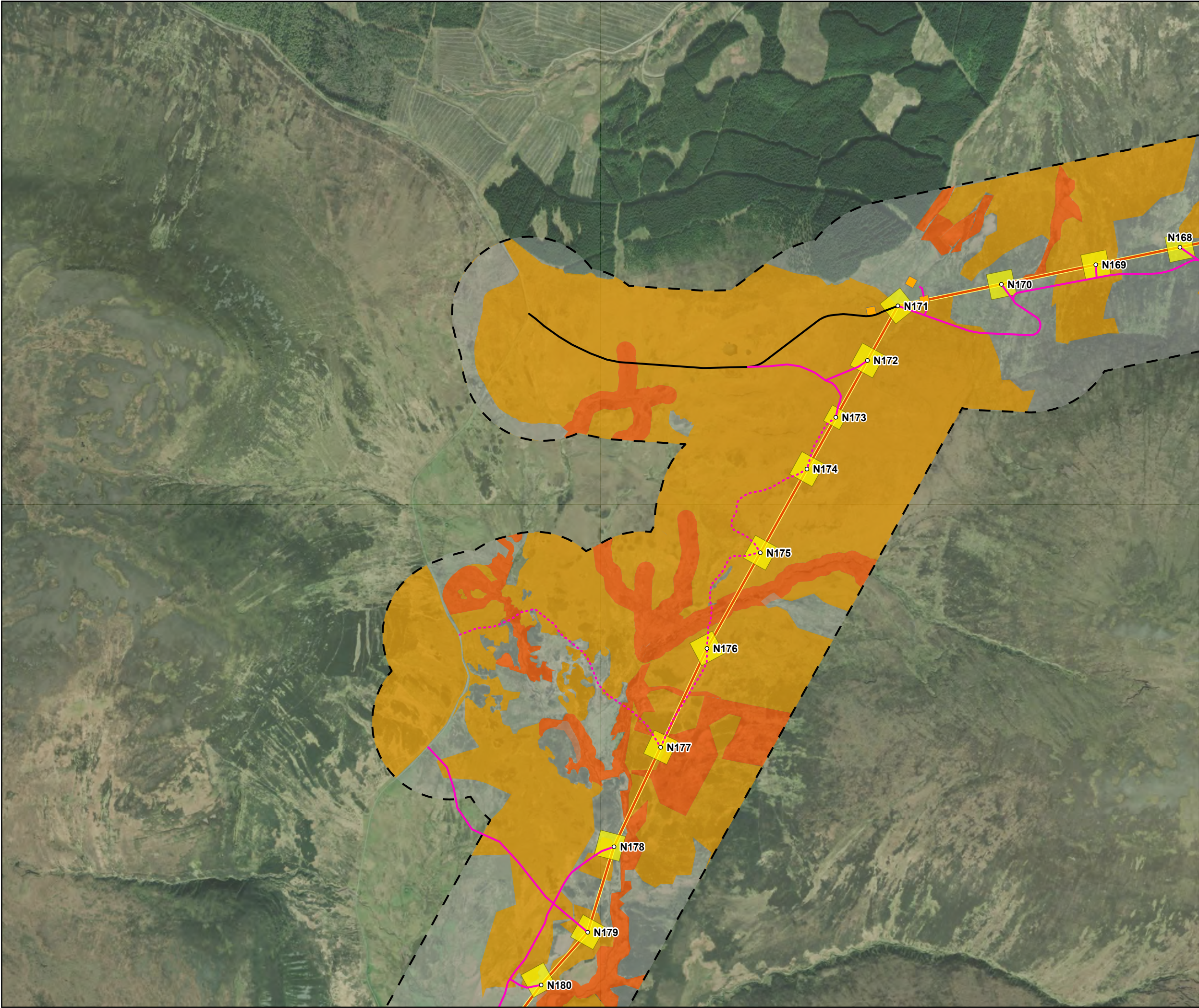
Scottish & Southern Electricity Networks

TRANSMISSION

PROJECTION: British National Grid

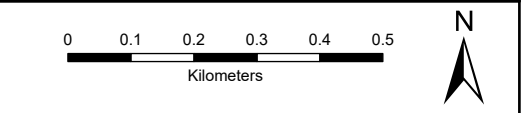
Maxar, Microsoft, Sources: Esri, TomTom, Garmin, FAO, NOAA, USGS, © OpenStreetMap contributors, and the GIS User Community, Esri, USGS, © Landmark Information Group Limited and/or its Data Suppliers (All rights reserved 2010). © NatureScot, Contains Ordnance Survey data © Crown copyright and database right (2025)

Path: \\uksprdgisfs01\Data\London\Projects\0652629 - SSE Beauly to Loch Buidhe\Maps\0720281 - SLBB - Ecology.aprx / 0720281 - SLBB - EIA - Ecology - Figure 8.7 - Peatland Condition Desk Study - A03



- Tower Location
- Alignment Section A
- Temporary Tower Compound Area
- Equipotential Zone (EPZ) (Pulling Position)
- Temporary Access Track - Trackway Panel
- Temporary Access Track - Floating
- Temporary Access Track - Cut/Fill
- Permanent Access Track - Floating
- Peat Condition Survey
 - Drained
 - Modified
 - n/a

Note: n/a for Peatland Condition indicates non-peatland habitat and/or areas of shallow peat <0.5m



SCALE: See Scale Bar	VERSION: A03
SIZE: A3	DRAWN: CI
PROJECT: 0720281	CHECKED: PW
DATE: 08/08/2025	APPROVED: KG

Figure 8.9 - 21
Spittal - Loch Buidhe - Beauly 400 kV OHL
Connection
Peatland Condition Desk Study