

Tower Location

Alignment Section A

Temporary Tower Compound Area

Equipotential Zone (EPZ) (Pulling Position)

Temporary Access Track - Trackway Panel

Temporary Access Track - Floating

Temporary Access Track - Cut/Fill

Permanent Access Track - Floating

Peat Condition Survey

Drained

Modified

n/a

Note: n/a for Peatland Condition indicates non-peatland habitat and/or areas of shallow peat <0.5m

High

Moray Firth

0

0.1

0.2

0.3

0.4

0.5

Kilometers

N

SCALE: See Scale Bar

VERSION: A03

SIZE: A3

DRAWN: CI

PROJECT: 0720281

CHECKED: PW

DATE: 08/08/2025

APPROVED: KG

Figure 8.9 - 22

Spittal - Loch Buidhe - Beauly 400 kV OHL Connection

Peatland Condition Desk Study

ERM

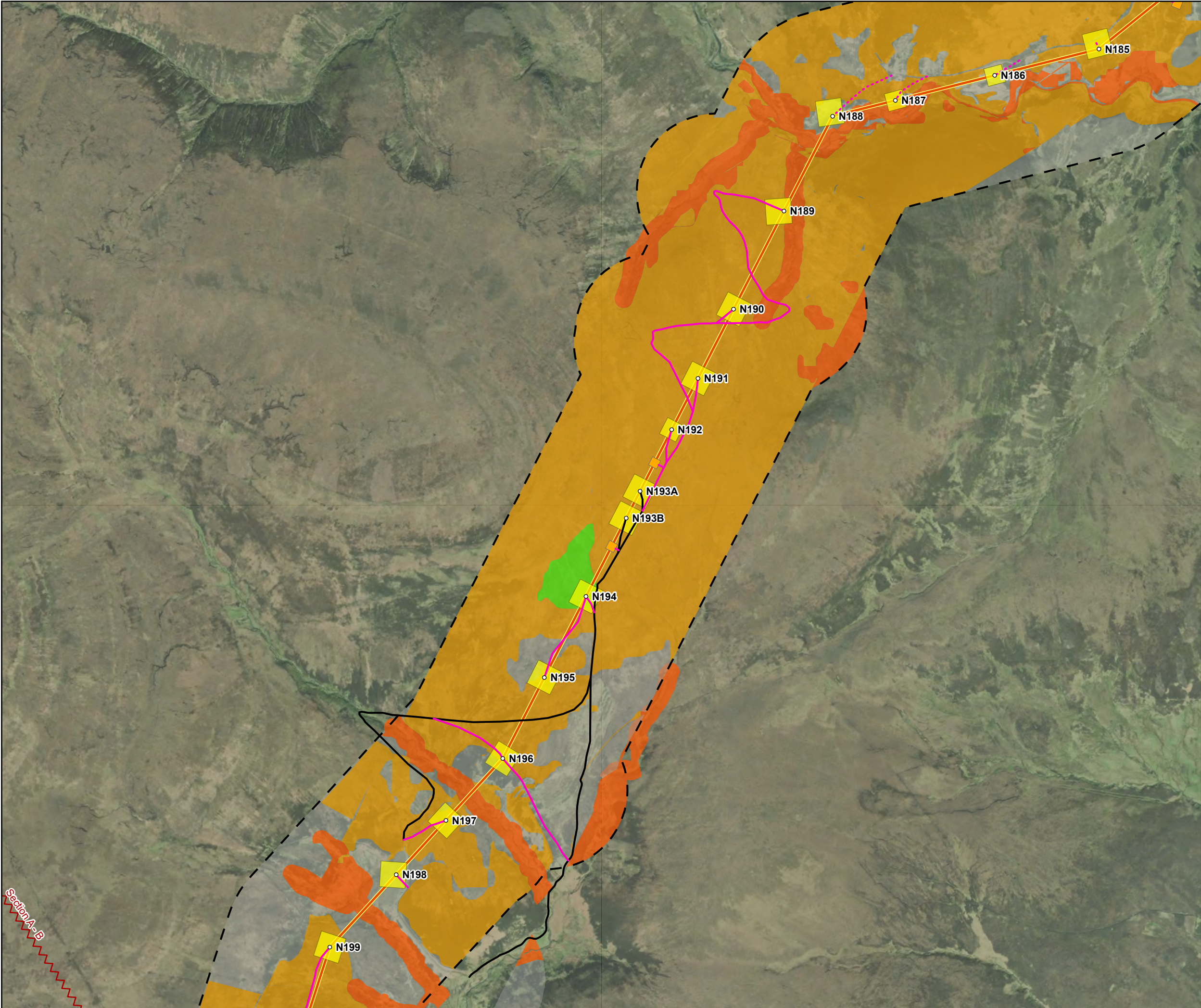
Scottish & Southern Electricity Networks

TRANSMISSION

PROJECTION: British National Grid

Maxar, Microsoft, Sources: Esri, TomTom, Garmin, FAO, NOAA, USGS, © OpenStreetMap contributors, and the GIS User Community, Esri, USGS; © Landmark Information Group Limited and/or its Data Suppliers (All rights reserved 2010).
© NatureScot, Contains Ordnance Survey data © Crown copyright and database right (2025)

Path: \\uksprdgisf01\Data\London\Projects\0652629 - SSE Beauly to Loch Buidhe\Maps\0720281 - SLBB - Ecology.aprx / 0720281 - SLBB - EIA - Ecology - Figure 8.7 - Peatland Condition Desk Study - A03



Tower Location

Alignment Section A

Temporary Tower Compound Area

Equipotential Zone (EPZ) (Pulling Position)

Temporary Access Track - Trackway Panel

Temporary Access Track - Floating

Temporary Access Track - Cut/Fill

Permanent Access Track - Floating

Alignment Section Break

Peat Condition Survey

Drained

Modified

Near Natural

n/a

Note: n/a for Peatland Condition indicates non-peatland habitat and/or areas of shallow peat <0.5m

00.10.20.30.40.5

Kilometers

N

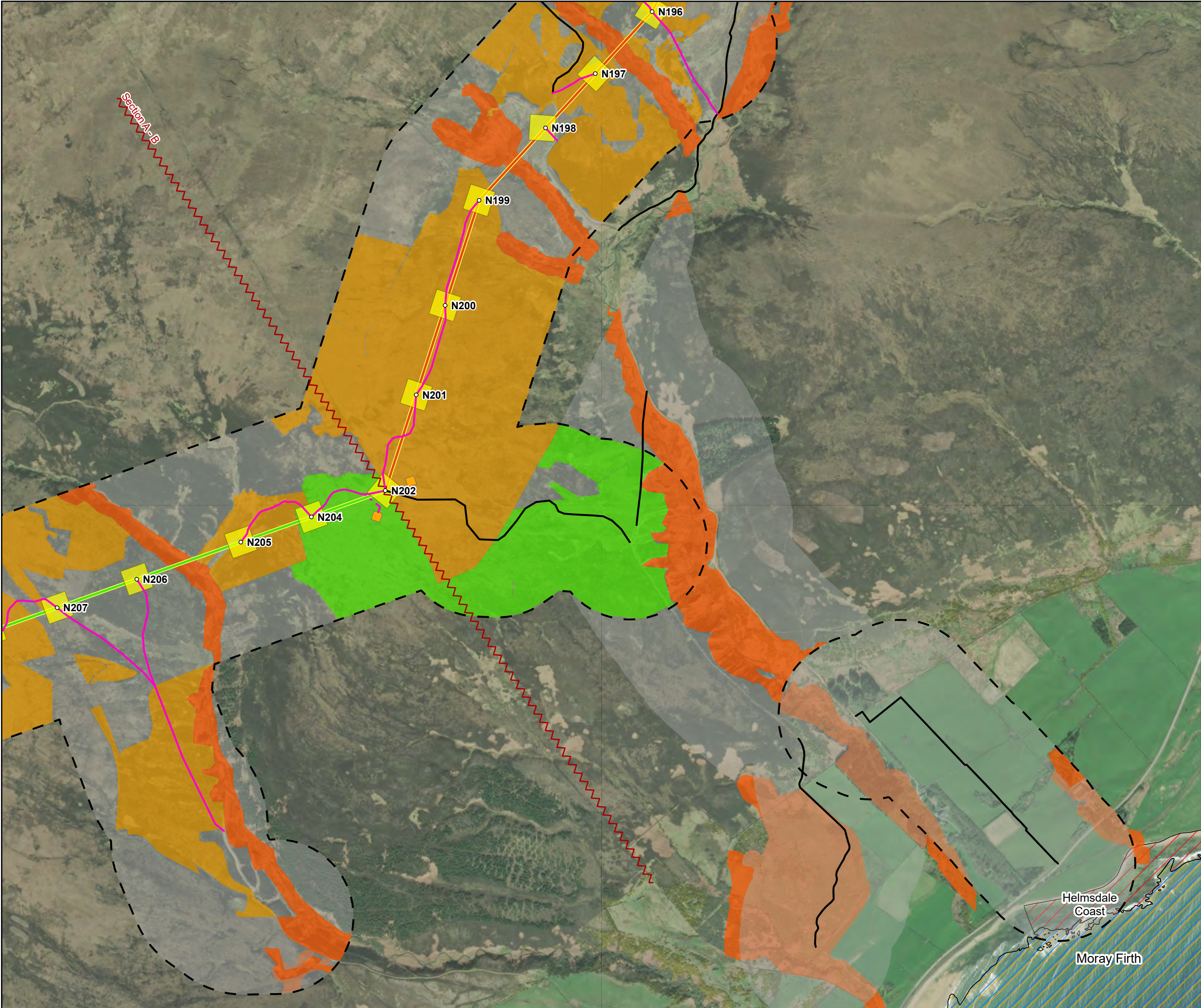
SCALE: See Scale Bar	VERSION: A03
SIZE: A3	DRAWN: CI
PROJECT: 0720281	CHECKED: PW
DATE: 08/08/2025	APPROVED: KG

Figure 8.9 - 23
Spittal - Loch Buidhe - Beauly 400 kV OHL Connection
Peatland Condition Desk Study

PROJECTION: British National Grid

Maxar, Microsoft, Sources: Esri, TomTom, Garmin, FAO, NOAA, USGS, © OpenStreetMap contributors, and the GIS User Community, Esri, USGS; © Landmark Information Group Limited and/or its Data Suppliers (All rights reserved 2010).
© NatureScot, Contains Ordnance Survey data © Crown copyright and database right (2025)

Path: \\uksprdgisfs01\Data\London\Projects\0652629 - SSE Beauly to Loch Buidhe\Maps\0720281 - SLBB - Ecology.aprx / 0720281 - SLBB - EIA - Ecology - Figure 8.7 - Peatland Condition Desk Study - A03



Tower Location

Alignment Section A

Alignment Section B

Temporary Tower Compound Area

Equipotential Zone (EPZ) (Pulling Position)

Temporary Access Track - Trackway Panel

Temporary Access Track - Floating

Temporary Access Track - Cut/Fill

Permanent Access Track - Floating

Alignment Section Break

Designated sites

Site Of Special Scientific Interest (SSSI)

Special Protection Area (SPA)

Special Area Of Conservation (SAC)

Peat Condition Survey

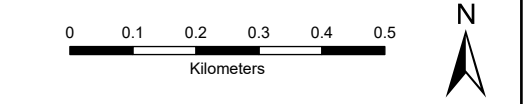
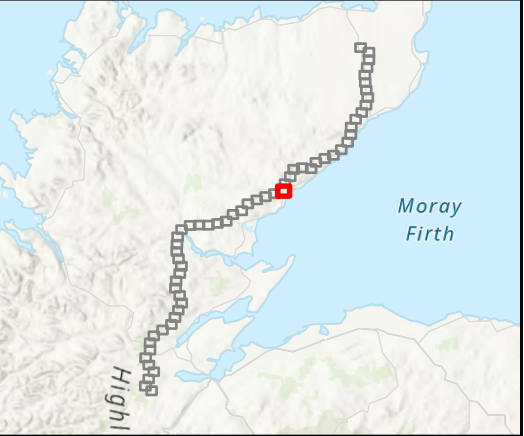
Drained

Modified

Near Natural

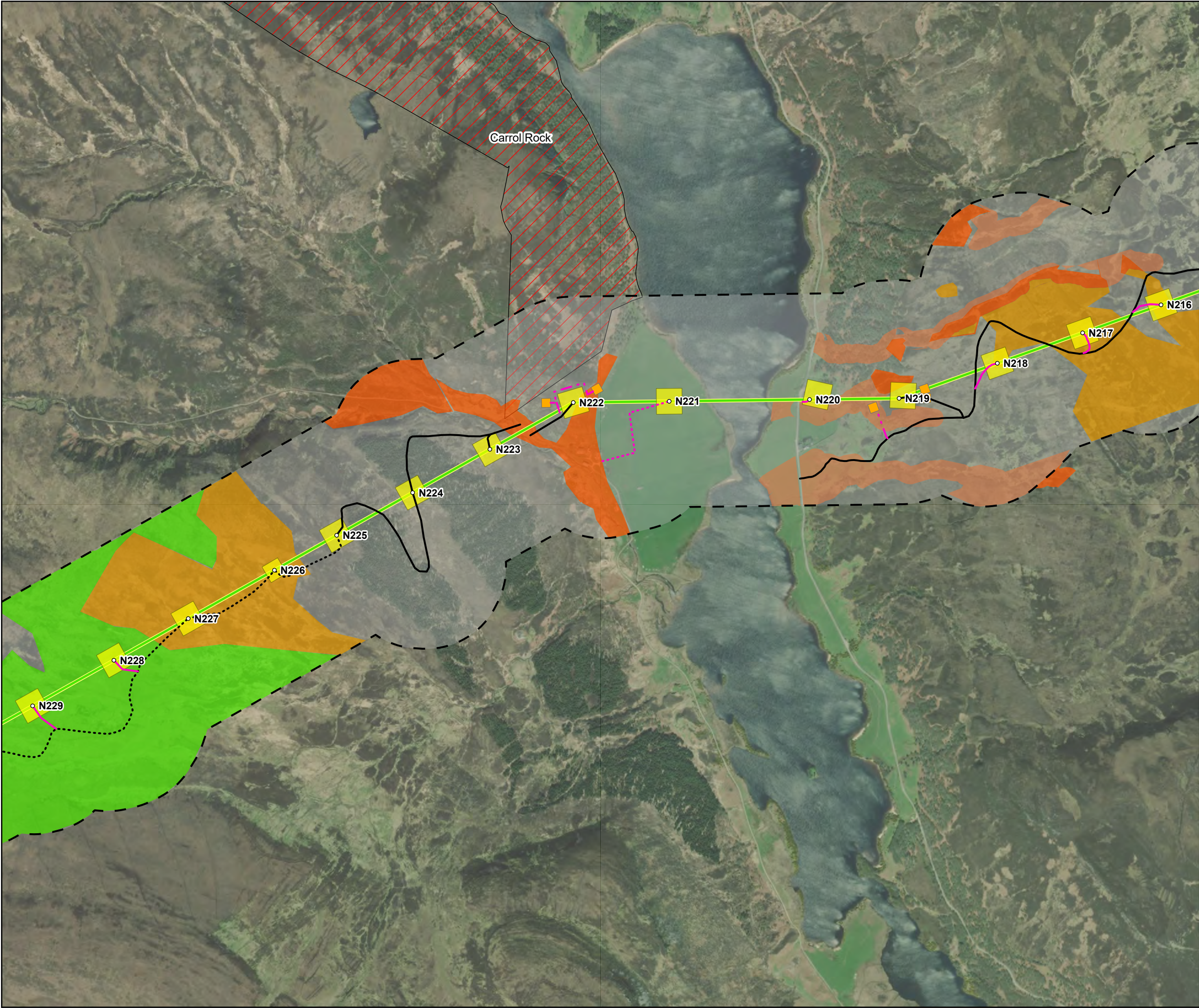
n/a

Note: n/a for Peatland Condition indicates non-peatland habitat and/or areas of shallow peat <0.5m



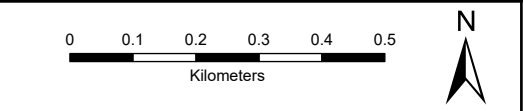
SCALE: See Scale Bar	VERSION: A03
SIZE: A3	DRAWN: CI
PROJECT: 0720281	CHECKED: PW
DATE: 08/08/2025	APPROVED: KG

Figure 8.9 - 24
Spittal - Loch Buidhe - Beauly 400 kV OHL Connection
Peatland Condition Desk Study



- Tower Location
- Alignment Section B
- Temporary Tower Compound Area
- Equipotential Zone (EPZ) (Pulling Position)
- Temporary Access Track - Trackway Panel
- Temporary Access Track - Floating
- Temporary Access Track - Cut/Fill
- Permanent Access Track - Floating
- Designated sites
- Site Of Special Scientific Interest (SSSI)
- Peat Condition Survey
- Drained
- Modified
- Near Natural
- n/a

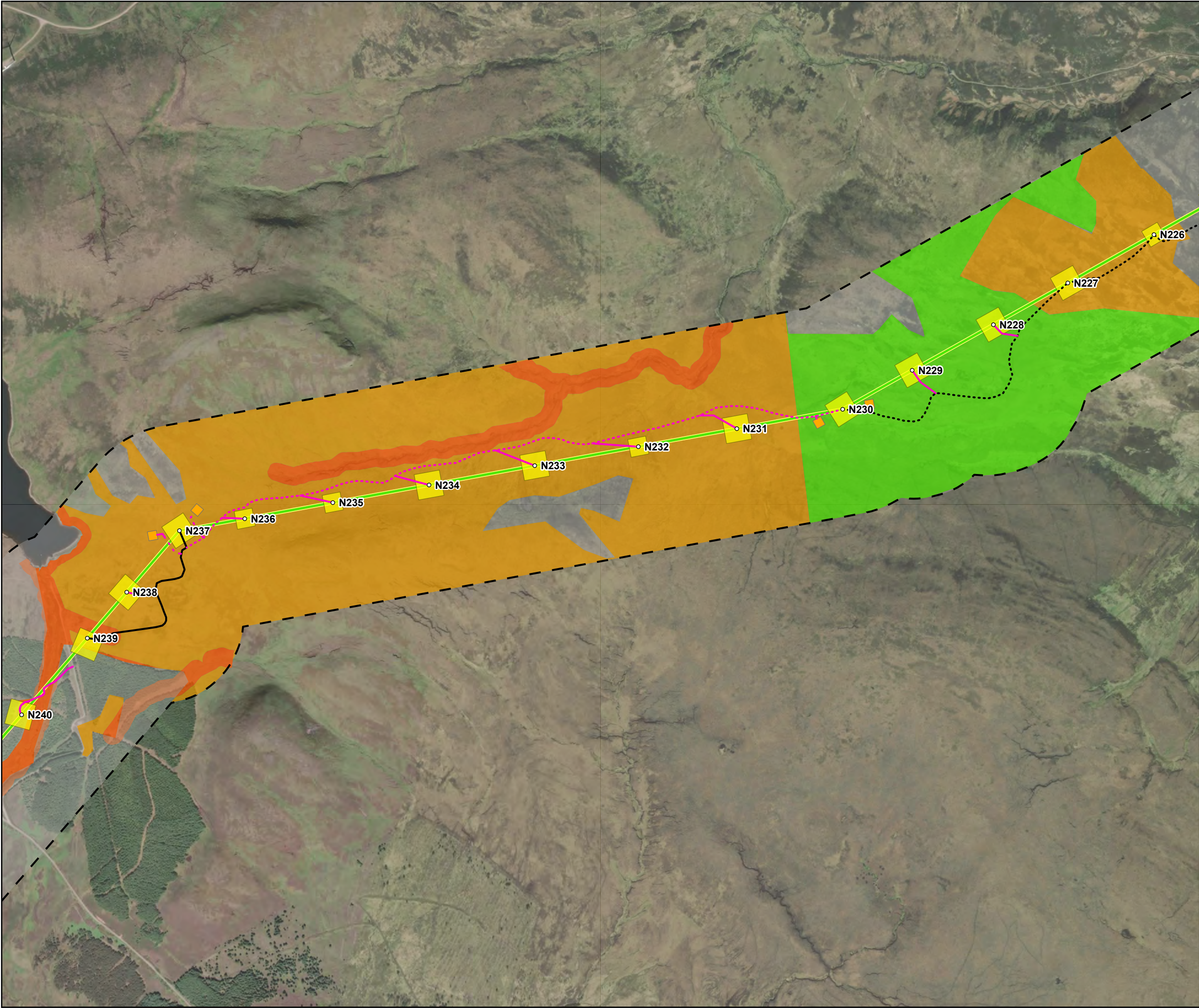
Note: n/a for Peatland Condition indicates non-peatland habitat and/or areas of shallow peat <0.5m



SCALE: See Scale Bar	VERSION: A03
SIZE: A3	DRAWN: CI
PROJECT: 0720281	CHECKED: PW
DATE: 08/08/2025	APPROVED: KG

Figure 8.9 - 26
Spittal - Loch Buidhe - Beauly 400 kV OHL
Connection
Peatland Condition Desk Study





Tower Location

Alignment Section B

Temporary Tower Compound Area

Equipotential Zone (EPZ) (Pulling Position)

Temporary Access Track - Trackway Panel

Temporary Access Track - Floating

Temporary Access Track - Cut/Fill

Permanent Access Track - Floating

Peat Condition Survey

Drained

Modified

Near Natural

n/a

Note: n/a for Peatland Condition indicates non-peatland habitat and/or areas of shallow peat <0.5m

00.10.20.30.40.5

Kilometers

N

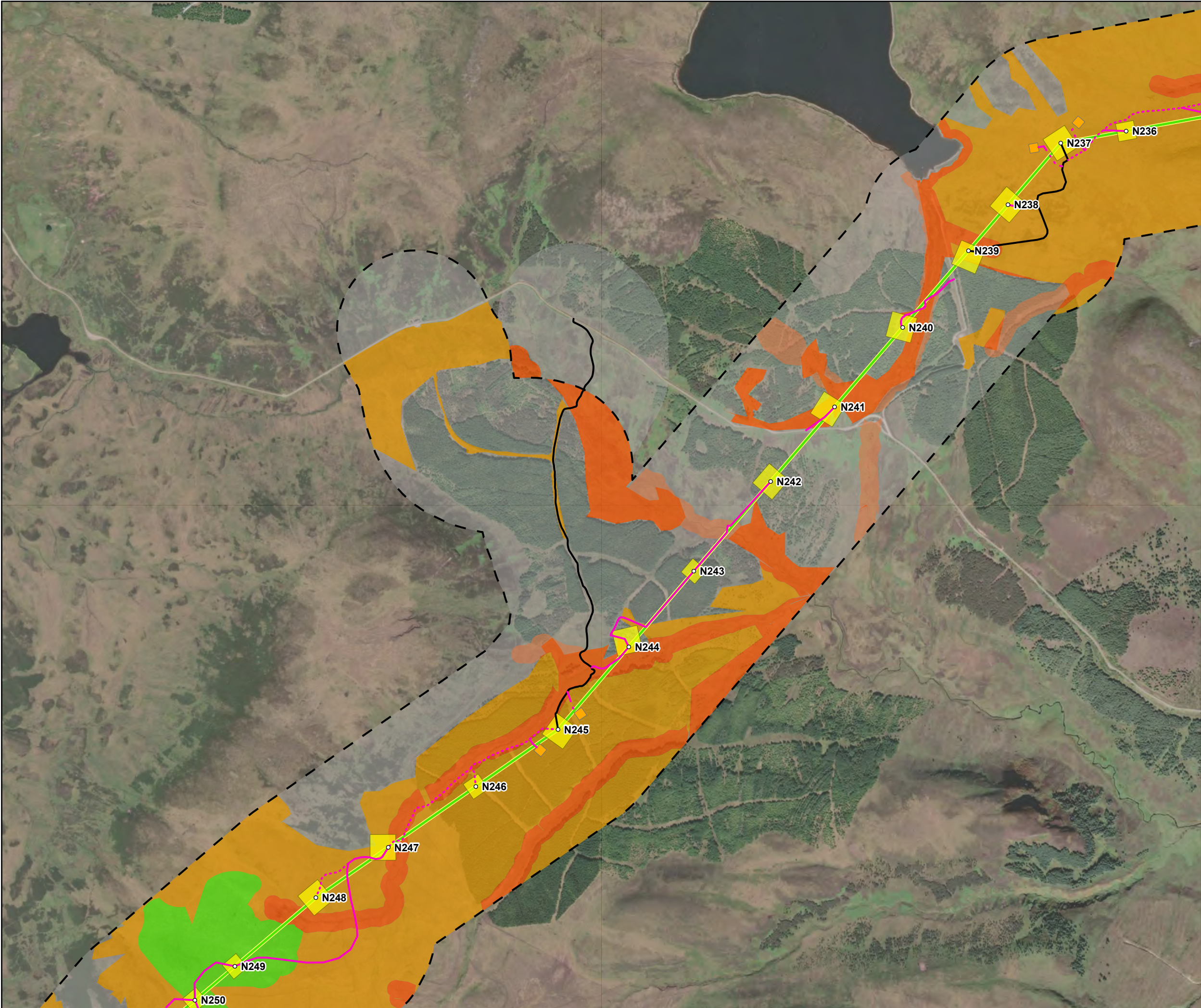
SCALE: See Scale Bar	VERSION: A03
SIZE: A3	DRAWN: CI
PROJECT: 0720281	CHECKED: PW
DATE: 08/08/2025	APPROVED: KG

Figure 8.9 - 27
Spittal - Loch Buidhe - Beauly 400 kV OHL Connection
Peatland Condition Desk Study

PROJECTION: British National Grid

Maxar, Microsoft, Sources: Esri, TomTom, Garmin, FAO, NOAA, USGS, © OpenStreetMap contributors, and the GIS User Community, Esri, USGS; © Landmark Information Group Limited and/or its Data Suppliers (All rights reserved 2010). © NatureScot, Contains Ordnance Survey data © Crown copyright and database right (2025)

Path: \\uksprdgisfs01\Data\London\Projects\0652629 - SSE Beauly to Loch Buidhe\Maps\0720281 - SLBB - Ecology.aprx / 0720281 - SLBB - EIA - Ecology - Figure 8.7 - Peatland Condition Desk Study - A03



Tower Location

Alignment Section B

Temporary Tower Compound Area

Equipotential Zone (EPZ) (Pulling Position)

Temporary Access Track - Trackway Panel

Temporary Access Track - Floating

Temporary Access Track - Cut/Fill

Permanent Access Track - Floating

Peat Condition Survey

Drained

Modified

Near Natural

n/a

Note: n/a for Peatland Condition indicates non-peatland habitat and/or areas of shallow peat <0.5m

00.10.20.30.40.5

Kilometers

N

SCALE: See Scale Bar

VERSION: A03

SIZE: A3

DRAWN: CI

PROJECT: 0720281

CHECKED: PW

DATE: 08/08/2025

APPROVED: KG

Figure 8.9 - 28

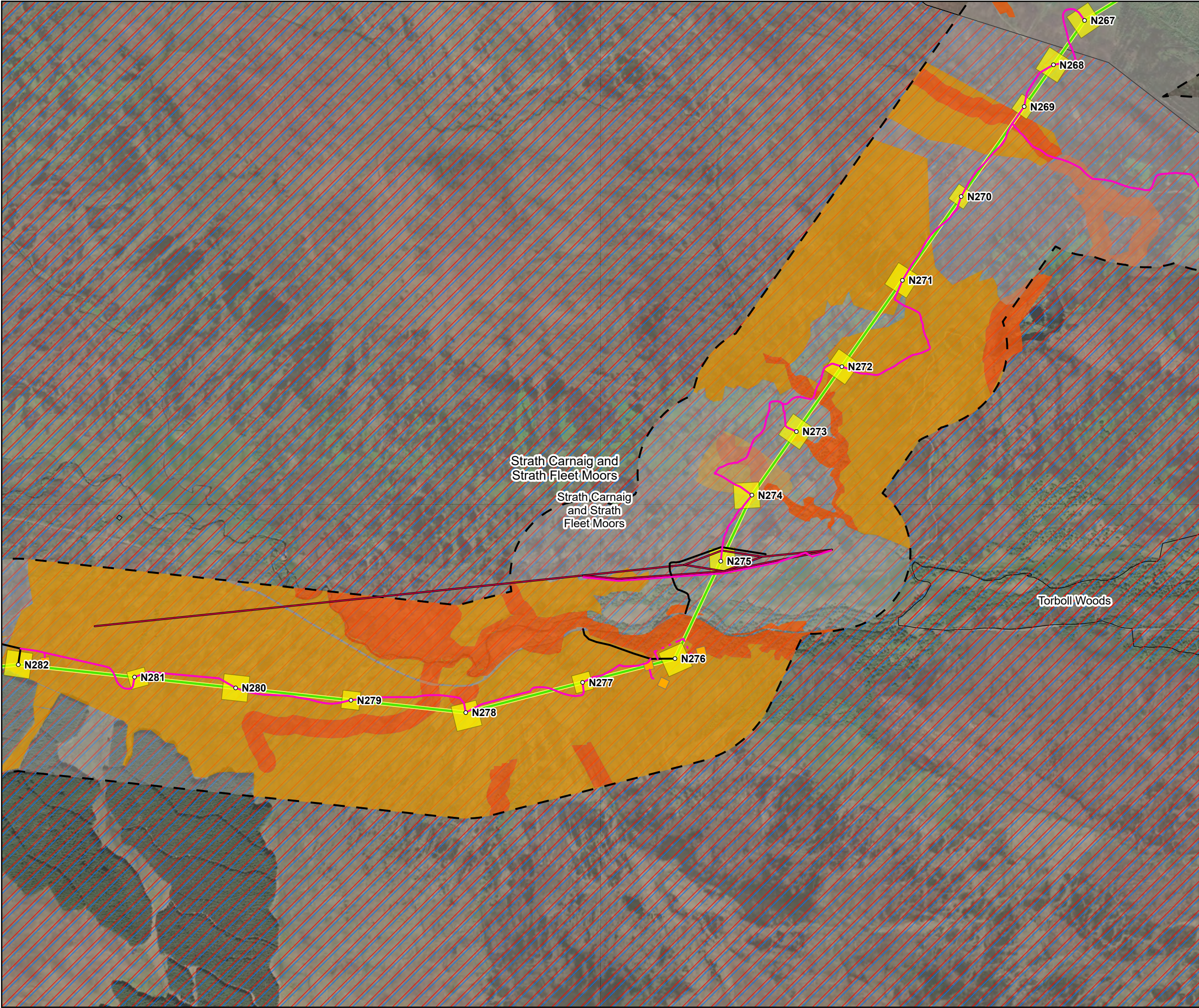
Spittal - Loch Buidhe - Beauly 400 kV OHL Connection

Peatland Condition Desk Study

PROJECTION: British National Grid

Maxar, Microsoft, Sources: Esri, TomTom, Garmin, FAO, NOAA, USGS, © OpenStreetMap contributors, and the GIS User Community, Esri, USGS; © Landmark Information Group Limited and/or its Data Suppliers (All rights reserved 2010).

Path: \\uksprdgsifs01\Data\London\Projects\0652629 - SSE Beauly to Loch Buidhe\Maps\0720281 - SLBB - Ecology.aprx / 0720281 - SLBB - EIA - Ecology - Figure 8.7 - Peatland Condition Desk Study - A03



Tower Location

Alignment Section B

Special Arrangement

Temporary Tower Compound Area

Equipotential Zone (EPZ) (Pulling Position)

Temporary Access Track - Trackway Panel

Temporary Access Track - Floating

Temporary Access Track - Cut/Fill

Permanent Access Track - Floating

Designated sites

Site Of Special Scientific Interest (SSSI)

Special Protection Area (SPA)

Peat Condition Survey

Drained

Modified

n/a

Note: n/a for Peatland Condition indicates non-peatland habitat and/or areas of shallow peat <0.5m

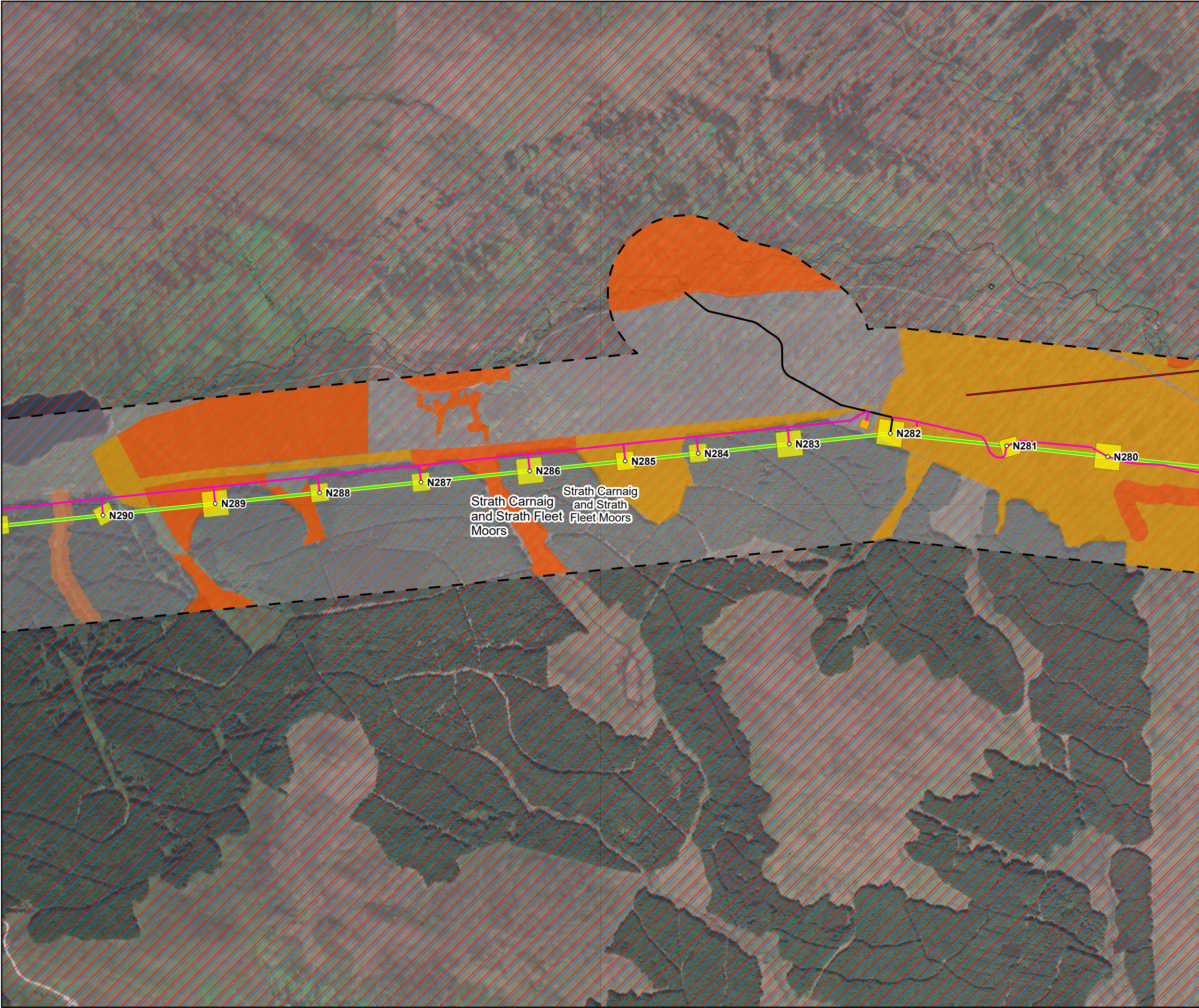
SCALE: See Scale Bar	VERSION: A03
SIZE: A3	DRAWN: CI
PROJECT: 0720281	CHECKED: PW
DATE: 08/08/2025	APPROVED: KG

Figure 8.9 - 31
Spittal - Loch Buidhe - Beauly 400 kV OHL Connection
Peatland Condition Desk Study

PROJECTION: British National Grid

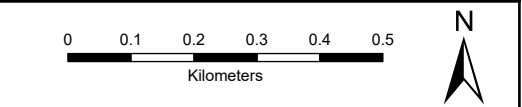
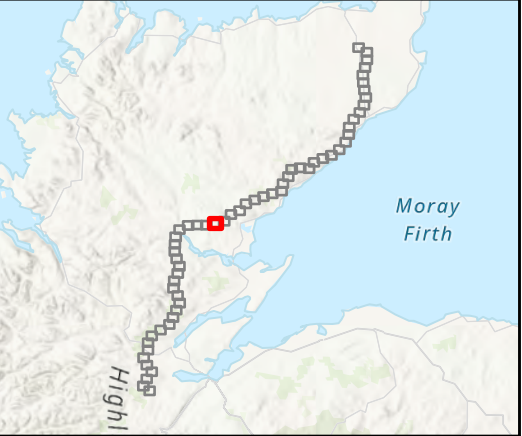
Maxar, Microsoft, Sources: Esri, TomTom, Garmin, FAO, NOAA, USGS, © OpenStreetMap contributors, and the GIS User Community, Esri, USGS, © Landmark Information Group Limited and/or its Data Suppliers (All rights reserved 2010). © NatureScot, Contains Ordnance Survey data © Crown copyright and database right (2025)

Path: \\uksprdgisf01\Data\London\Projects\0652629 - SSE Beauly to Loch Buidhe\Maps\0720281 - SLBB - Ecology.aprx / 0720281 - SLBB - EIA - Ecology - Figure 8.7 - Peatland Condition Desk Study - A03



- Tower Location
 - Alignment Section B
 - Special Arrangement
 - Temporary Tower Compound Area
 - Equipotential Zone (EPZ) (Pulling Position)
 - Temporary Access Track - Trackway Panel
 - Temporary Access Track - Floating
 - Temporary Access Track - Cut/Fill
 - Permanent Access Track - Floating
- Designated sites
- Site Of Special Scientific Interest (SSSI)
 - Special Protection Area (SPA)
- Peat Condition Survey
- Drained
 - Modified
 - n/a

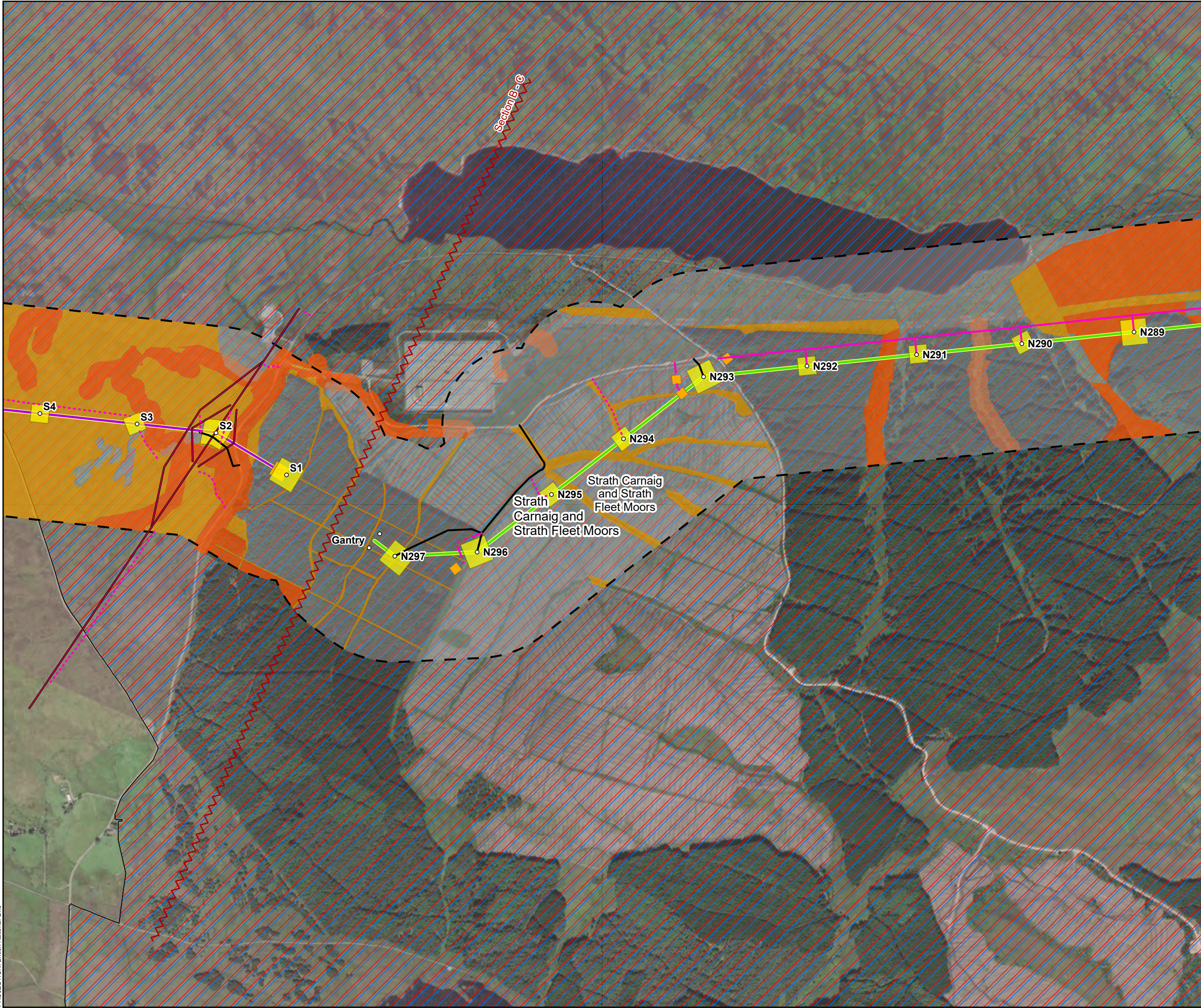
Note: n/a for Peatland Condition indicates non-peatland habitat and/or areas of shallow peat <0.5m



SCALE: See Scale Bar	VERSION: A03
SIZE: A3	DRAWN: CI
PROJECT: 0720281	CHECKED: PW
DATE: 08/08/2025	APPROVED: KG

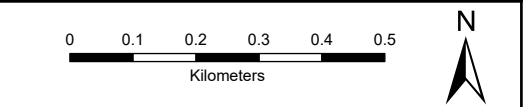
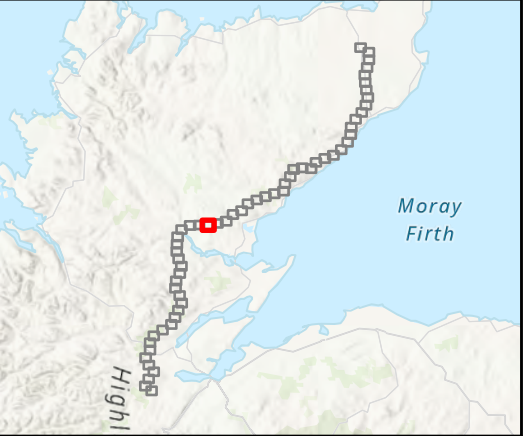
Figure 8.9 - 32
Spittal - Loch Buidhe - Beauly 400 kV OHL Connection
Peatland Condition Desk Study





- Tower Location
- Alignment Section B
- Alignment Section C
- Special Arrangement
- Temporary Tower Compound Area
- Equipotential Zone (EPZ) (Pulling Position)
- - - Temporary Access Track - Trackway Panel
- ... Temporary Access Track - Floating
- Temporary Access Track - Cut/Fill
- - - Permanent Access Track - Floating
- ~ Alignment Section Break
- Designated sites
 - ▨ Site Of Special Scientific Interest (SSSI)
 - ▨ Special Protection Area (SPA)
- Peat Condition Survey
 - Drained
 - Modified
 - n/a

Note: n/a for Peatland Condition indicates non-peatland habitat and/or areas of shallow peat <0.5m



SCALE: See Scale Bar	VERSION: A03
SIZE: A3	DRAWN: CI
PROJECT: 0720281	CHECKED: PW
DATE: 08/08/2025	APPROVED: KG

Figure 8.9 - 33
Spittal - Loch Buidhe - Beauly 400 kV OHL Connection
Peatland Condition Desk Study





Tower Location

Alignment Section C

Special Arrangement

Temporary Tower Compound Area

Equipotential Zone (EPZ) (Pulling Position)

Temporary Access Track - Trackway Panel

Temporary Access Track - Floating

Temporary Access Track - Cut/Fill

Permanent Access Track - Floating

Alignment Section Break

Designated sites

Site Of Special Scientific Interest (SSSI)

Special Protection Area (SPA)

Peat Condition Survey

Drained

Modified

n/a

Note: n/a for Peatland Condition indicates non-peatland habitat and/or areas of shallow peat <0.5m

SCALE: See Scale Bar	VERSION: A03
SIZE: A3	DRAWN: CI
PROJECT: 0720281	CHECKED: PW
DATE: 08/08/2025	APPROVED: KG

Figure 8.9 - 34
Spittal - Loch Buidhe - Beauly 400 kV OHL Connection
Peatland Condition Desk Study

PROJECTION: British National Grid

Maxar, Microsoft, Sources: Esri, TomTom, Garmin, FAO, NOAA, USGS, © OpenStreetMap contributors, and the GIS User Community, Esri, USGS, © Landmark Information Group Limited and/or its Data Suppliers (All rights reserved 2010).

Path: \\uksprdgisfs01\Data\London\Projects\0652629 - SSE Beauly to Loch Buidhe\Maps\0720281 - SLBB - Ecology.aprx / 0720281 - SLBB - EIA - Ecology - Figure 8.7 - Peatland Condition Desk Study - A03



Tower Location

Alignment Section C

Temporary Tower Compound Area

Equipotential Zone (EPZ) (Pulling Position)

Temporary Access Track - Trackway Panel

Temporary Access Track - Floating

Temporary Access Track - Cut/Fill

Permanent Access Track - Floating

Designated sites

Site Of Special Scientific Interest (SSSI)

Peat Condition Survey

Drained

Modified

n/a

Note: n/a for Peatland Condition indicates non-peatland habitat and/or areas of shallow peat <0.5m

0 0.1 0.2 0.3 0.4 0.5
Kilometers

N

SCALE: See Scale Bar
SIZE: A3
PROJECT: 0720281
DATE: 08/08/2025

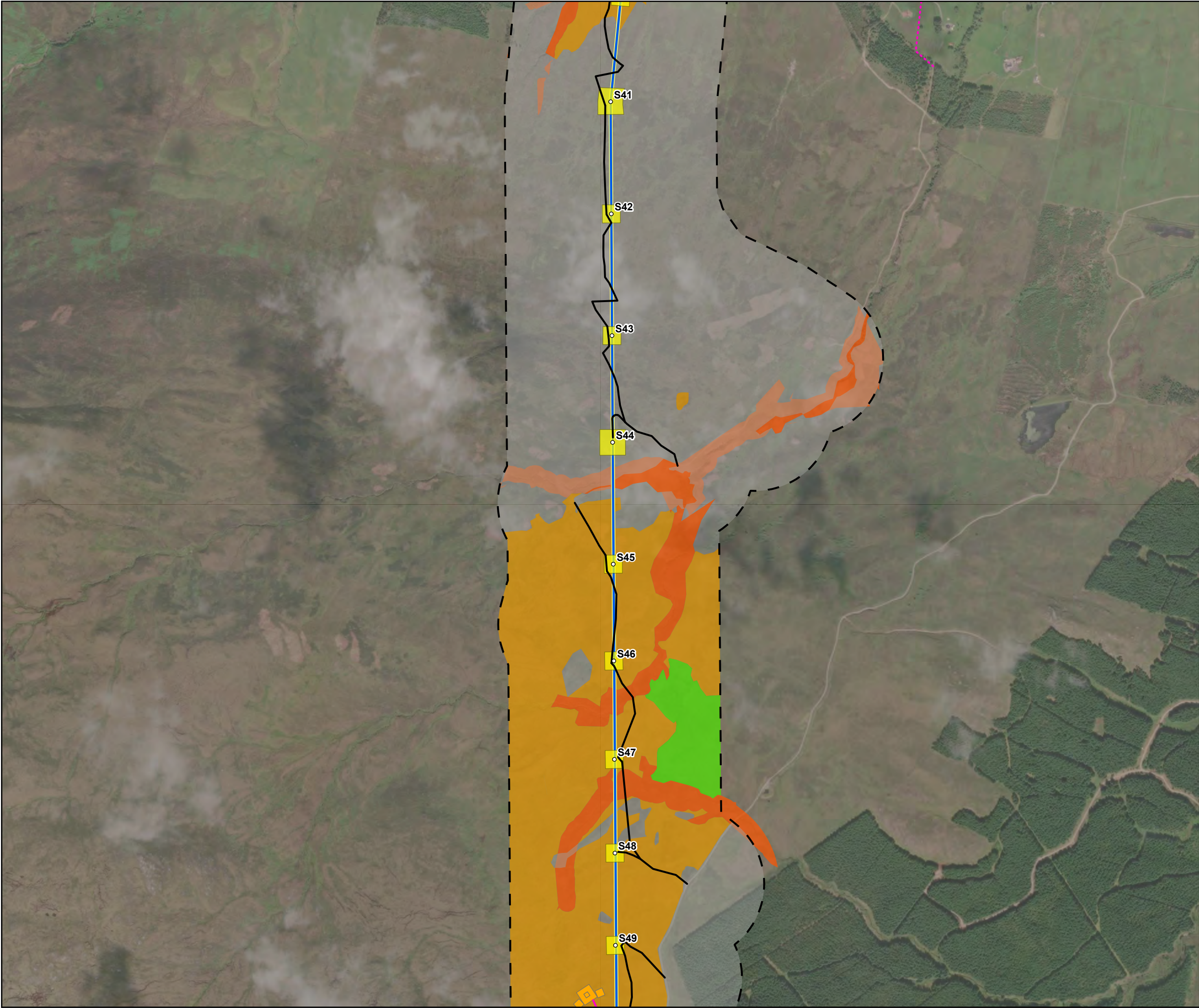
VERSION: A03
DRAWN: CI
CHECKED: PW
APPROVED: KG

Figure 8.9 - 37
Spittal - Loch Buidhe - Beauly 400 kV OHL Connection
Peatland Condition Desk Study

PROJECTION: British National Grid

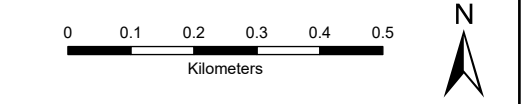
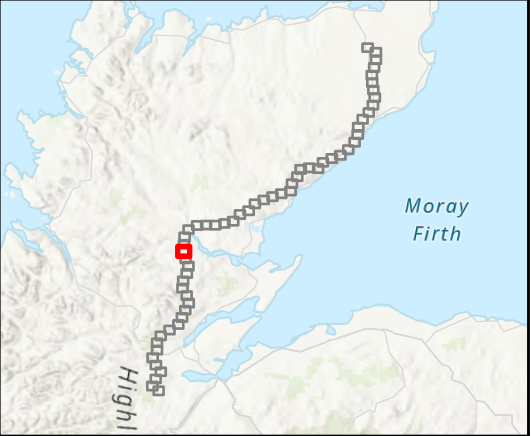
Maxar, Microsoft, Sources: Esri, TomTom, Garmin, FAO, NOAA, USGS, © OpenStreetMap contributors, and the GIS User Community, Esri, USGS, © Landmark Information Group Limited and/or its Data Suppliers (All rights reserved 2010).
© NatureScot, Contains Ordnance Survey data © Crown copyright and database right (2025)

Path: \\uksprdgisf01\Data\London\Projects\0652629 - SSE Beauly to Loch Buidhe\Maps\0720281 - SLBB - Ecology.aprx / 0720281 - SLBB - EIA - Ecology - Figure 8.7 - Peatland Condition Desk Study - A03



- Tower Location
 - Alignment Section D
 - Temporary Tower Compound Area
 - Equipotential Zone (EPZ) (Pulling Position)
 - Temporary Access Track - Trackway Panel
 - Temporary Access Track - Floating
 - Temporary Access Track - Cut/Fill
 - Permanent Access Track - Floating
- Peat Condition Survey
- Drained
 - Modified
 - Near Natural
 - n/a

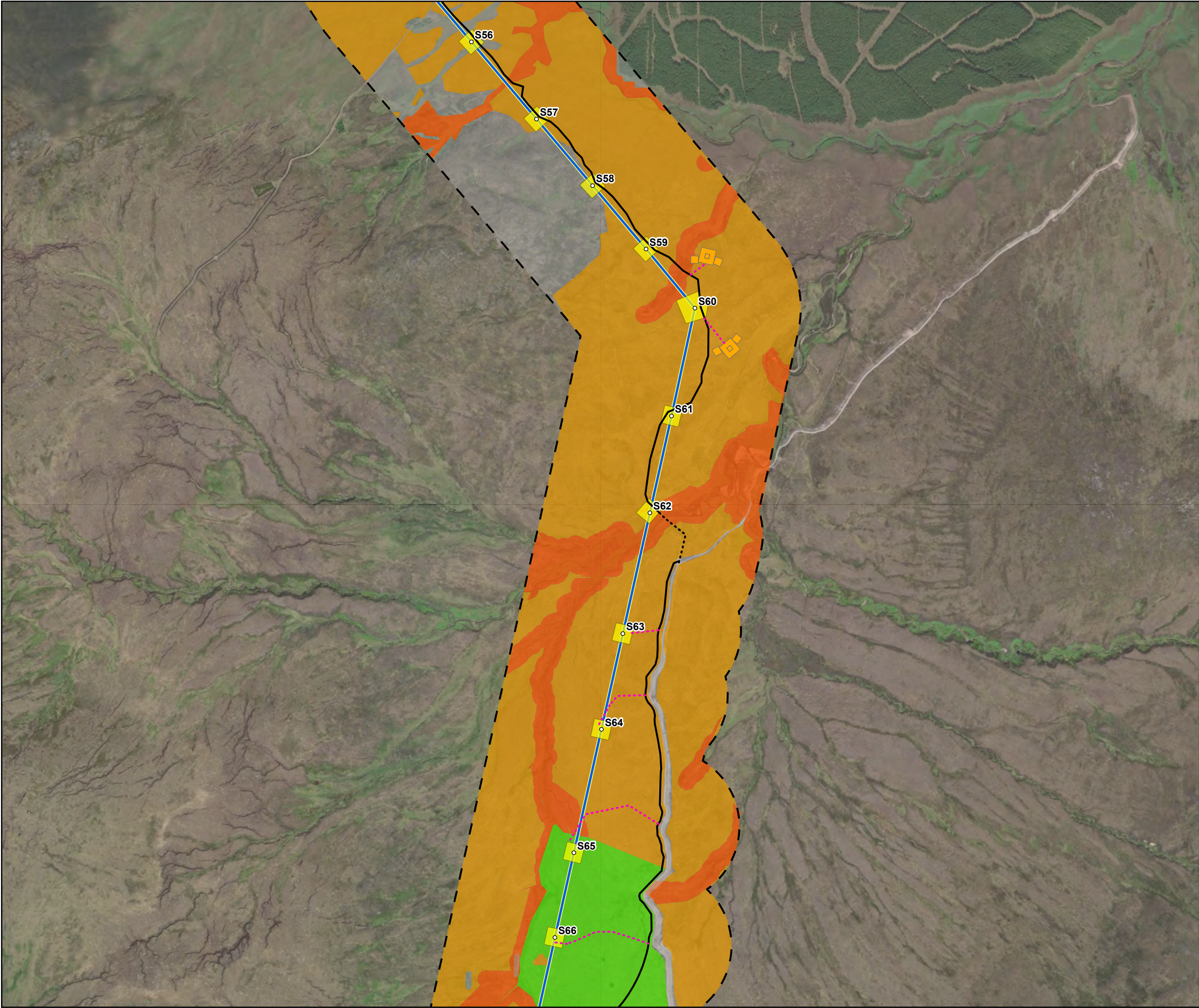
Note: n/a for Peatland Condition indicates non-peatland habitat and/or areas of shallow peat <0.5m



SCALE: See Scale Bar	VERSION: A03
SIZE: A3	DRAWN: CI
PROJECT: 0720281	CHECKED: PW
DATE: 08/08/2025	APPROVED: KG

Figure 8.9 - 39
Spittal - Loch Buidhe - Beauly 400 kV OHL
Connection
Peatland Condition Desk Study

PROJECTION: British National Grid



Tower Location

Alignment Section D

Temporary Tower Compound Area

Equipotential Zone (EPZ) (Pulling Position)

Temporary Access Track - Trackway Panel

Temporary Access Track - Floating

Temporary Access Track - Cut/Fill

Permanent Access Track - Floating

Peat Condition Survey

Drained

Modified

Near Natural

n/a

Note: n/a for Peatland Condition indicates non-peatland habitat and/or areas of shallow peat <0.5m

Moray Firth

High

00.10.20.30.40.5

Kilometers

N

SCALE: See Scale Bar

VERSION: A03

SIZE: A3

DRAWN: CI

PROJECT: 0720281

CHECKED: PW

DATE: 08/08/2025

APPROVED: KG

Figure 8.9 - 41

Spittal - Loch Buidhe - Beauly 400 kV OHL Connection

Peatland Condition Desk Study

ERM

Scottish & Southern

Electricity Networks

TRANSMISSION

PROJECTION: British National Grid

Maxar, Microsoft, Sources: Esri, TomTom, Garmin, FAO, NOAA, USGS, © OpenStreetMap contributors, and the GIS User Community, Esri, USGS; © Landmark Information Group Limited and/or its Data Suppliers (All rights reserved 2010).

Path: \\uksprdgsfs01\Data\London\Projects\0652629 - SSE Beauly to Loch Buidhe\Maps\0720281 - SLBB - Ecology.aprx / 0720281 - SLBB - EIA - Ecology - Figure 8.7 - Peatland Condition Desk Study - A03

© NatureScot, Contains Ordnance Survey data © Crown copyright and database right (2025)