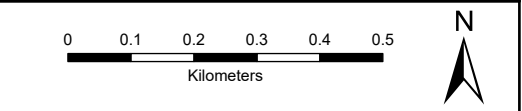
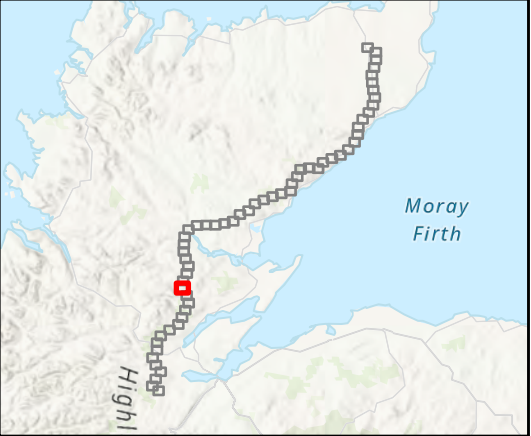


- Tower Location
 - Alignment Section D
 - Temporary Tower Compound Area
 - Equipotential Zone (EPZ) (Pulling Position)
 - Temporary Access Track - Trackway Panel
 - Temporary Access Track - Floating
 - Temporary Access Track - Cut/Fill
 - Permanent Access Track - Floating
- Peat Condition Survey
- Drained
 - Modified
 - Near Natural
 - n/a

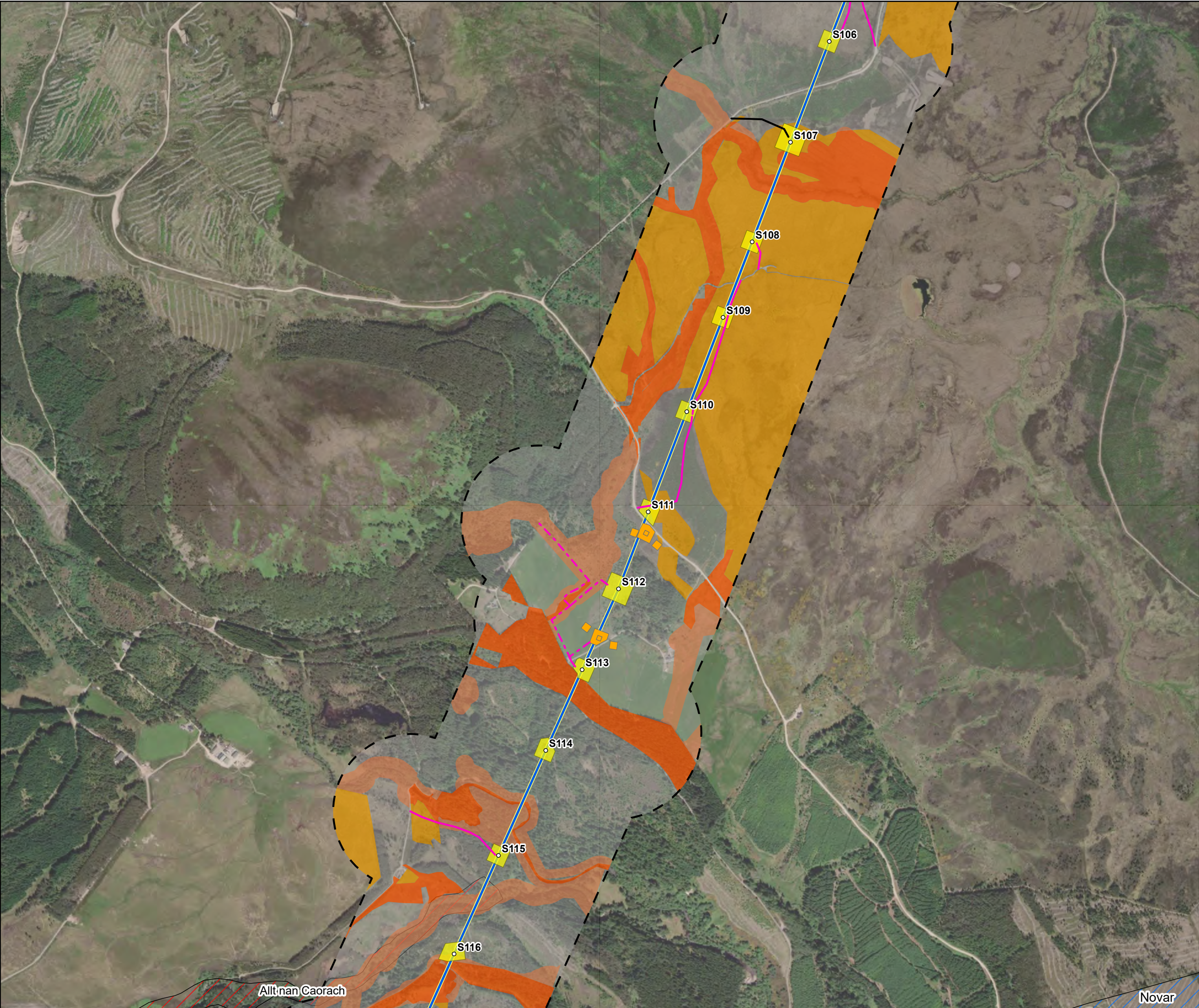
Note: n/a for Peatland Condition indicates non-peatland habitat and/or areas of shallow peat <0.5m



SCALE: See Scale Bar	VERSION: A03
SIZE: A3	DRAWN: CI
PROJECT: 0720281	CHECKED: PW
DATE: 08/08/2025	APPROVED: KG

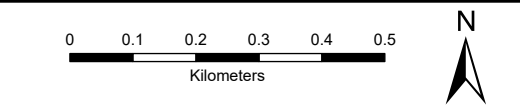
Figure 8.9 - 44
Spittal - Loch Buidhe - Beauly 400 kV OHL
Connection
Peatland Condition Desk Study





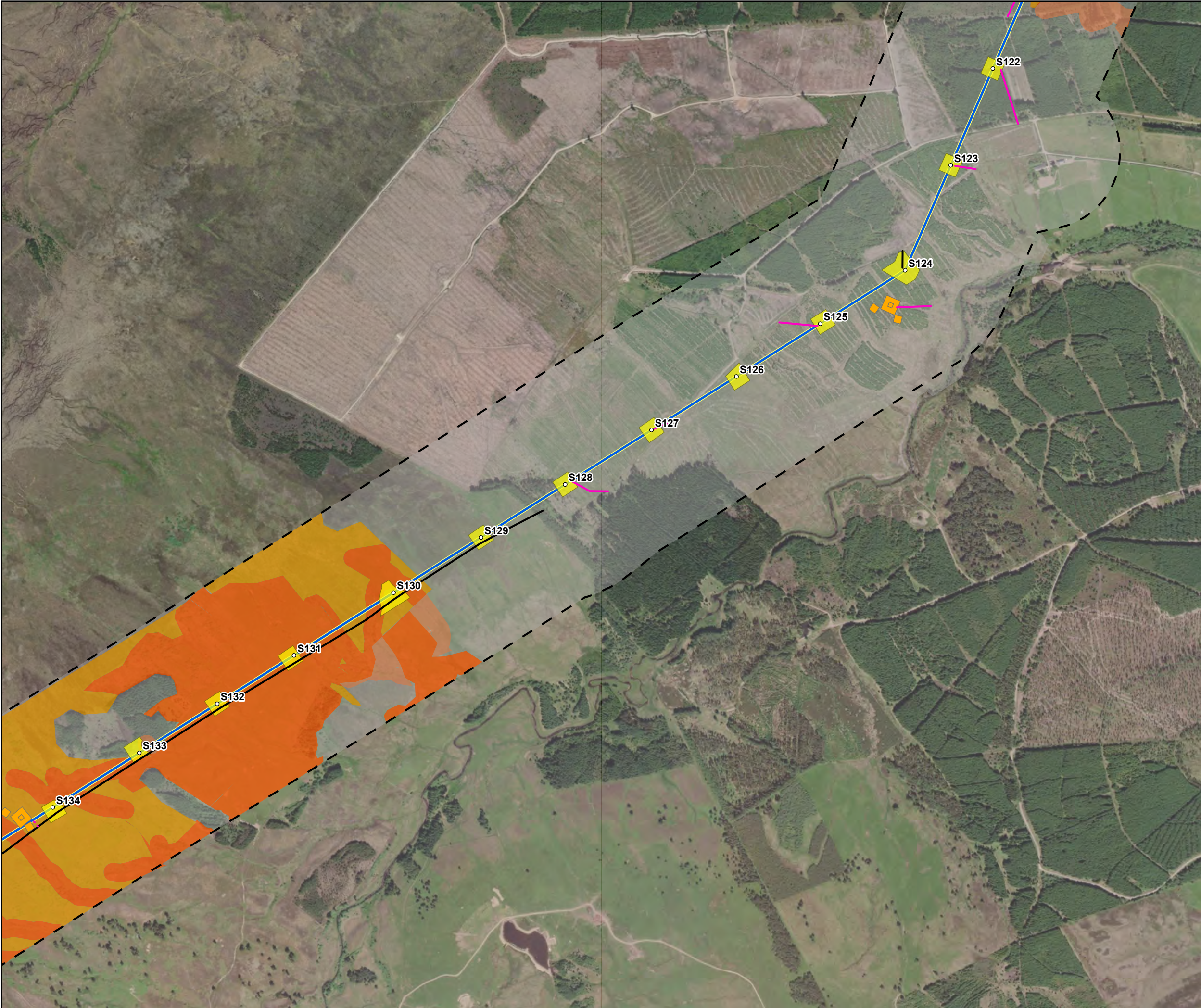
- Tower Location
 - Alignment Section D
 - Temporary Tower Compound Area
 - Equipotential Zone (EPZ) (Pulling Position)
 - Temporary Access Track - Trackway Panel
 - Temporary Access Track - Floating
 - Temporary Access Track - Cut/Fill
 - Permanent Access Track - Floating
- Designated sites
- Site Of Special Scientific Interest (SSSI)
 - Special Protection Area (SPA)
- Peat Condition Survey
- Drained
 - Modified
 - n/a

Note: n/a for Peatland Condition indicates non-peatland habitat and/or areas of shallow peat <0.5m



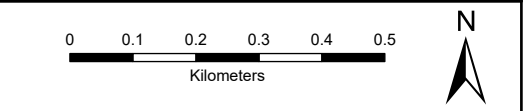
SCALE: See Scale Bar	VERSION: A03
SIZE: A3	DRAWN: CI
PROJECT: 0720281	CHECKED: PW
DATE: 08/08/2025	APPROVED: KG

Figure 8.9 - 47
Spittal - Loch Buidhe - Beauly 400 kV OHL Connection
Peatland Condition Desk Study



- Tower Location
- Alignment Section D
- Temporary Tower Compound Area
- Equipotential Zone (EPZ) (Pulling Position)
- Temporary Access Track - Trackway Panel
- Temporary Access Track - Floating
- Temporary Access Track - Cut/Fill
- Permanent Access Track - Floating
- Peat Condition Survey
 - Drained
 - Modified
 - n/a

Note: n/a for Peatland Condition indicates non-peatland habitat and/or areas of shallow peat <0.5m



SCALE: See Scale Bar	VERSION: A03
SIZE: A3	DRAWN: CI
PROJECT: 0720281	CHECKED: PW
DATE: 08/08/2025	APPROVED: KG

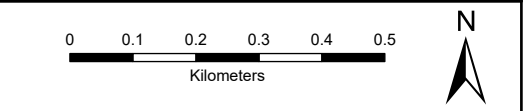
Figure 8.9 - 49
Spittal - Loch Buidhe - Beauly 400 kV OHL
Connection
Peatland Condition Desk Study





- Tower Location
- Alignment Section D
- Alignment Section E
- Temporary Tower Compound Area
- Equipotential Zone (EPZ) (Pulling Position)
- Temporary Access Track - Trackway Panel
- Temporary Access Track - Floating
- Temporary Access Track - Cut/Fill
- Permanent Access Track - Floating
- Alignment Section Break
- Peat Condition Survey
 - Drained
 - Modified
 - Near Natural
 - n/a

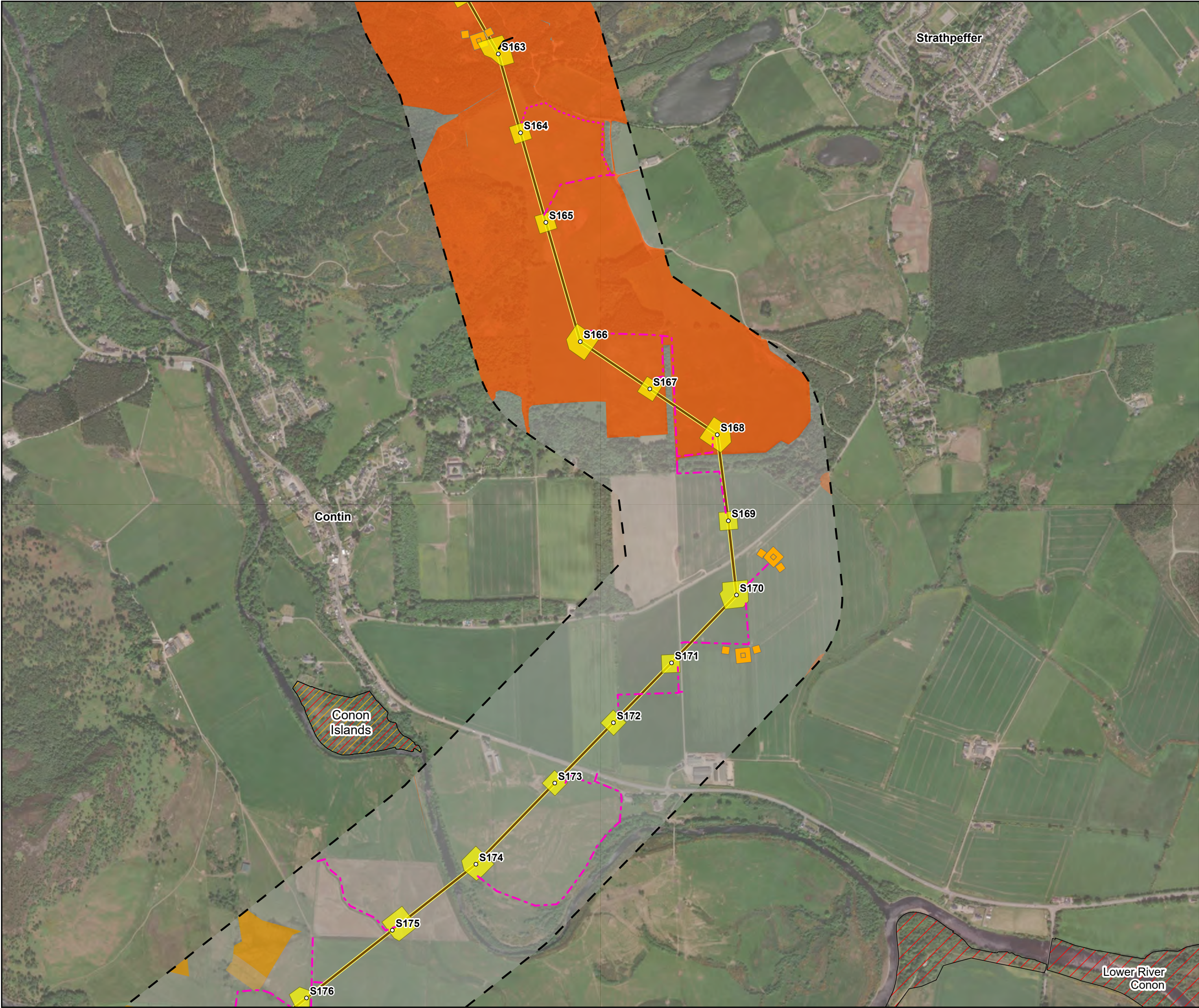
Note: n/a for Peatland Condition indicates non-peatland habitat and/or areas of shallow peat <0.5m



SCALE: See Scale Bar	VERSION: A03
SIZE: A3	DRAWN: CI
PROJECT: 0720281	CHECKED: PW
DATE: 08/08/2025	APPROVED: KG

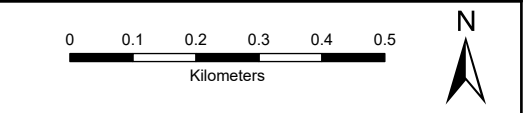
Figure 8.9 - 51
Spittal - Loch Buidhe - Beauly 400 kV OHL
Connection
Peatland Condition Desk Study





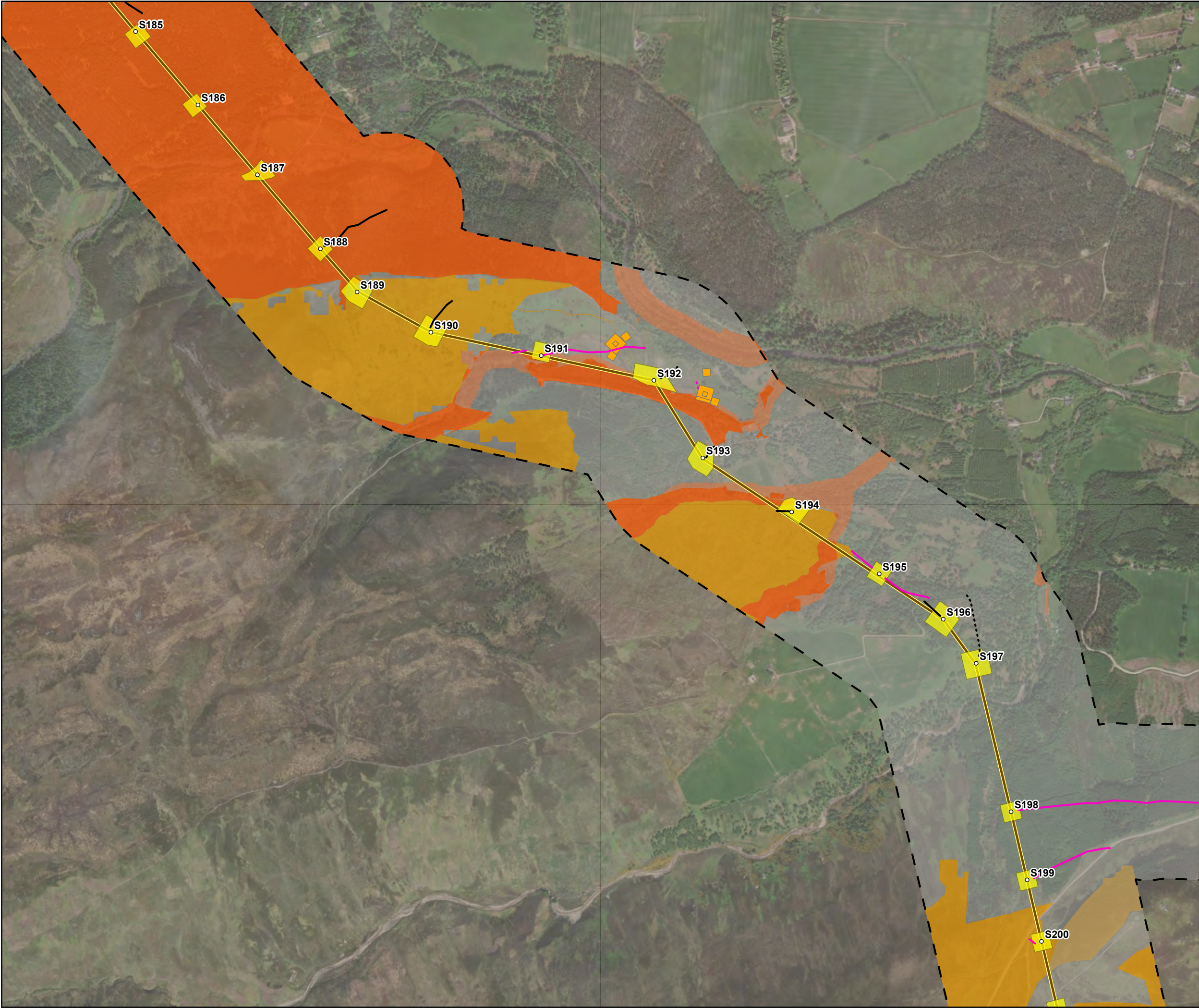
- Tower Location
 - Alignment Section E
 - Temporary Tower Compound Area
 - Equipotential Zone (EPZ) (Pulling Position)
 - Temporary Access Track - Trackway Panel
 - Temporary Access Track - Floating
 - Temporary Access Track - Cut/Fill
 - Permanent Access Track - Floating
- Designated sites
- Site Of Special Scientific Interest (SSSI)
 - Special Area Of Conservation (SAC)
- Peat Condition Survey
- Drained
 - Modified
 - n/a

Note: n/a for Peatland Condition indicates non-peatland habitat and/or areas of shallow peat <0.5m



SCALE: See Scale Bar	VERSION: A03
SIZE: A3	DRAWN: CI
PROJECT: 0720281	CHECKED: PW
DATE: 08/08/2025	APPROVED: KG

Figure 8.9 - 53
Spittal - Loch Buidhe - Beauly 400 kV OHL
Connection
Peatland Condition Desk Study



Tower Location

Alignment Section E

Temporary Tower Compound Area

Equipotential Zone (EPZ) (Pulling Position)

Temporary Access Track - Trackway Panel

Temporary Access Track - Floating

Temporary Access Track - Cut/Fill

Permanent Access Track - Floating

Peat Condition Survey

Drained

Modified

n/a

Note: n/a for Peatland Condition indicates non-peatland habitat and/or areas of shallow peat <0.5m

00.10.20.30.40.5

Kilometers

N

SCALE: See Scale Bar	VERSION: A03
SIZE: A3	DRAWN: CI
PROJECT: 0720281	CHECKED: PW
DATE: 08/08/2025	APPROVED: KG

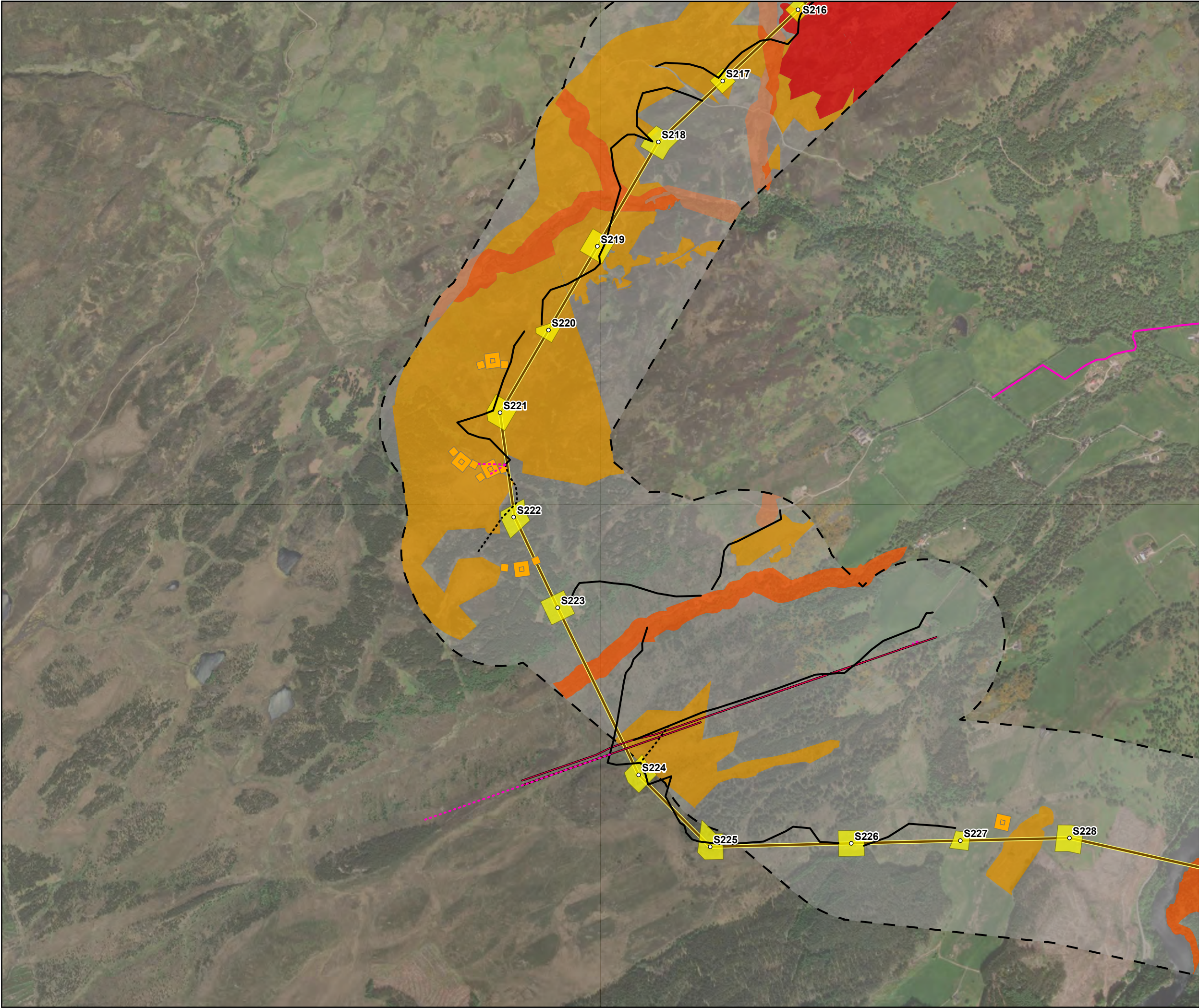
Figure 8.9 - 55
Spittal - Loch Buidhe - Beauly 400 kV OHL Connection
Peatland Condition Desk Study

ERMScottish & Southern Electricity Networks
TRANSMISSION

PROJECTION: British National Grid

Maxar, Microsoft, Sources: Esri, TomTom, Garmin, FAO, NOAA, USGS, © OpenStreetMap contributors, and the GIS User Community, Esri, USGS; © Landmark Information Group Limited and/or its Data Suppliers (All rights reserved 2010). © NatureScot, Contains Ordnance Survey data © Crown copyright and database right (2025)

Path: \\uksprdgisfs01\Data\London\Projects\0652629 - SSE Beauly to Loch Buidhe\Maps\0720281 - SLBB - Ecology.aprx / 0720281 - SLBB - EIA - Ecology - Figure 8.7 - Peatland Condition Desk Study - A03



Tower Location

Alignment Section E

Special Arrangement

Temporary Tower Compound Area

Equipotential Zone (EPZ) (Pulling Position)

Temporary Access Track - Trackway Panel

Temporary Access Track - Floating

Temporary Access Track - Cut/Fill

Permanent Access Track - Floating

Peat Condition Survey

Actively Eroding

Drained

Modified

n/a

Note: n/a for Peatland Condition indicates non-peatland habitat and/or areas of shallow peat <0.5m

0 0.1 0.2 0.3 0.4 0.5
Kilometers

N

SCALE: See Scale Bar	VERSION: A03
SIZE: A3	DRAWN: CI
PROJECT: 0720281	CHECKED: PW
DATE: 08/08/2025	APPROVED: KG

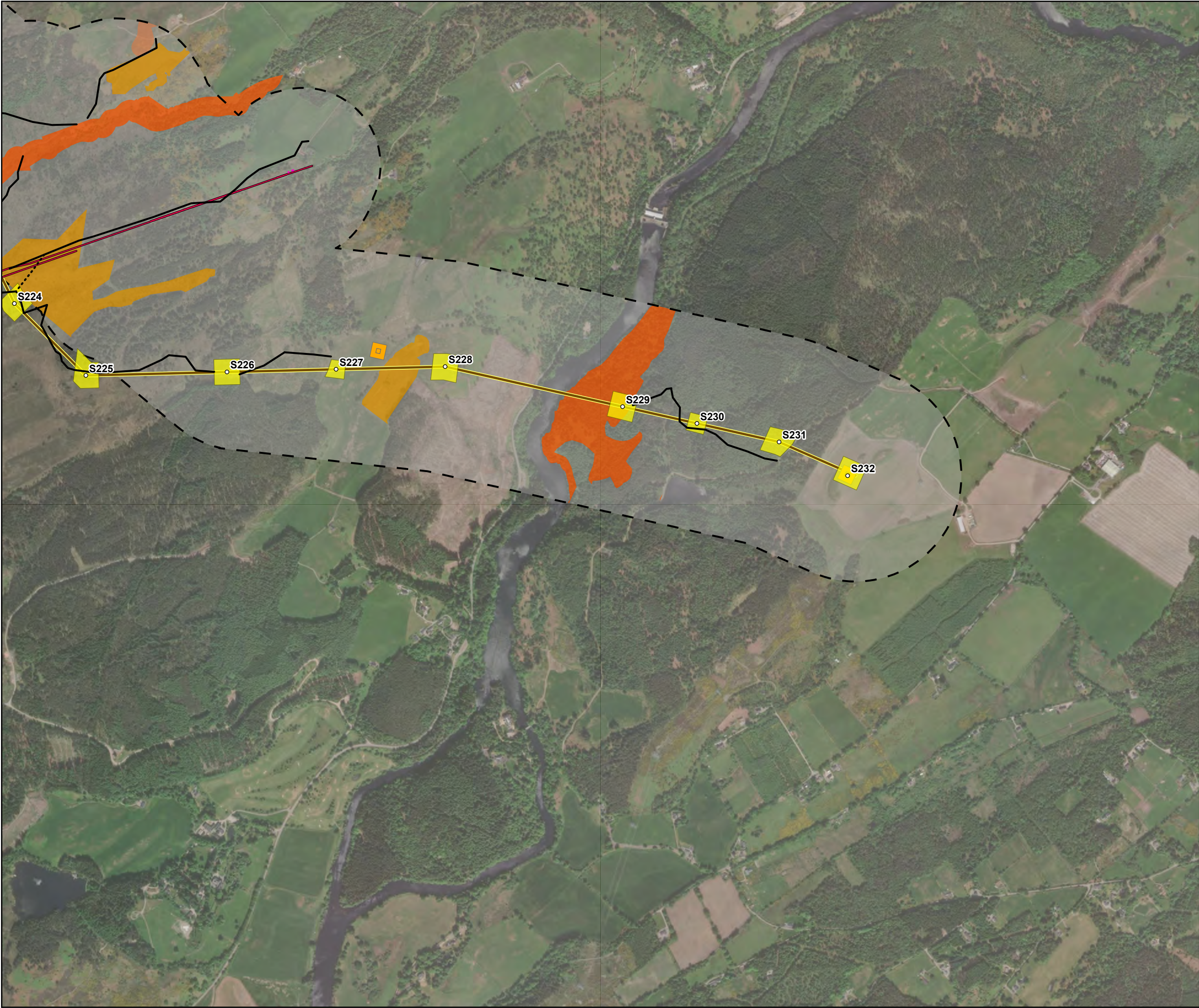
Figure 8.9 - 58
Spittal - Loch Buidhe - Beauly 400 kV OHL Connection
Peatland Condition Desk Study

ERMScottish & Southern Electricity Networks
TRANSMISSION

PROJECTION: British National Grid

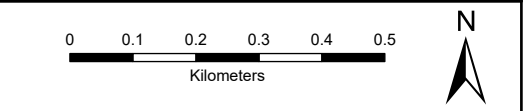
Maxar, Microsoft, Sources: Esri, TomTom, Garmin, FAO, NOAA, USGS, © OpenStreetMap contributors, and the GIS User Community, Esri, USGS; © Landmark Information Group Limited and/or its Data Suppliers (All rights reserved 2010).
© NatureScot, Contains Ordnance Survey data © Crown copyright and database right (2025)

Path: \\uksprdgisfs01\Data\London\Projects\0652629 - SSE Beauly to Loch Buidhe\Maps\0720281 - SLBB - Ecology.aprx / 0720281 - SLBB - EIA - Ecology - Figure 8.7 - Peatland Condition Desk Study - A03



- Tower Location
 - Alignment Section E
 - Special Arrangement
 - Temporary Tower Compound Area
 - Equipotential Zone (EPZ) (Pulling Position)
 - Temporary Access Track - Trackway Panel
 - Temporary Access Track - Floating
 - Temporary Access Track - Cut/Fill
 - Permanent Access Track - Floating
- Peat Condition Survey
- Drained
 - Modified
 - n/a

Note: n/a for Peatland Condition indicates non-peatland habitat and/or areas of shallow peat <0.5m



SCALE: See Scale Bar	VERSION: A03
SIZE: A3	DRAWN: CI
PROJECT: 0720281	CHECKED: PW
DATE: 08/08/2025	APPROVED: KG

Figure 8.9 - 59
Spittal - Loch Buidhe - Beauly 400 kV OHL Connection
Peatland Condition Desk Study

PROJECTION: British National Grid