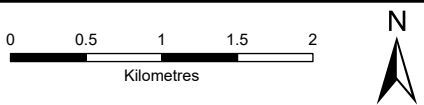
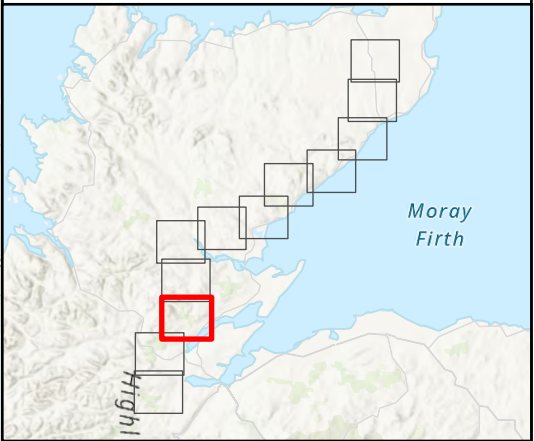


- Tower Location
- Alignment Section D
- Temporary Tower Compound Area
- Equipotential Zone (EPZ) (Pulling Position)
- Temporary Access Track - Trackway Panel
- Temporary Access Track - Cut/Fill
- Temporary Access Track - Floating
- Permanent Access Track - Cut/Fill
- Permanent Access Track - Floating
- Alignment Section Break
- Study Area (1 km Buffer)
- WFD Watercourse (SEPA)
- WFD Loch (SEPA)
- Recommended Riparian Corridor (SEPA)
  - 10m Buffer
  - 15m Buffer
  - 30m Buffer

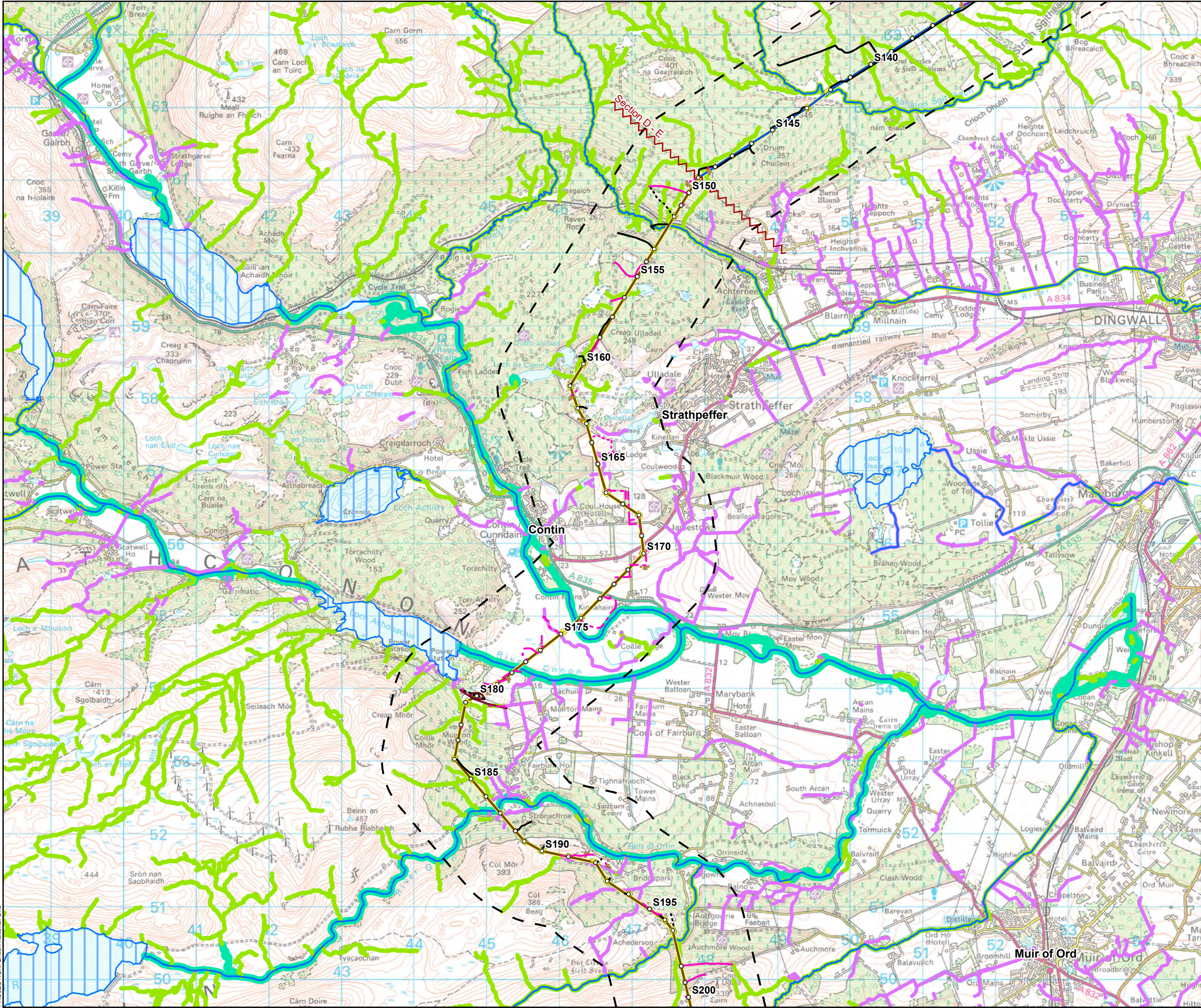


SCALE: See Scale Bar	VERSION: A04
SIZE: A3	DRAWN: JG
PROJECT: 0720281	CHECKED: RD
DATE: 11/08/2025	APPROVED: KG

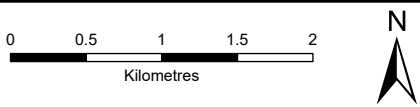
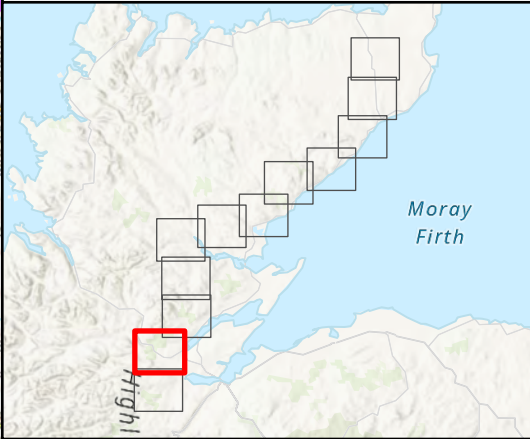
**Figure 10.2 - 10**  
**Spittal - Loch Buidhe - Beauly 400 kV OHL**  
**Connection**  
**Surface Watercourses and Waterbodies**







- Tower Location
- Alignment Section D
- Alignment Section E
- Special Arrangement
- Temporary Tower Compound Area
- Equipotential Zone (EPZ) (Pulling Position)
- Temporary Access Track - Trackway Panel
- Temporary Access Track - Cut/Fill
- Temporary Access Track - Floating
- Permanent Access Track - Cut/Fill
- Permanent Access Track - Floating
- Alignment Section Break
- Study Area (1 km Buffer)
- WFD Watercourse (SEPA)
- WFD Loch (SEPA)
- Recommended Riparian Corridor (SEPA)
  - 10m Buffer
  - 15m Buffer
  - 30m Buffer



SCALE: See Scale Bar	VERSION: A04
SIZE: A3	DRAWN: JG
PROJECT: 0720281	CHECKED: RD
DATE: 11/08/2025	APPROVED: KG

**Figure 10.2 - 11**  
**Spittal - Loch Buidhe - Beauly 400 kV OHL**  
**Connection**  
**Surface Watercourses and Waterbodies**

