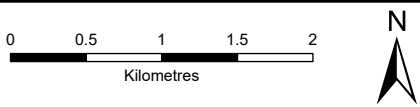
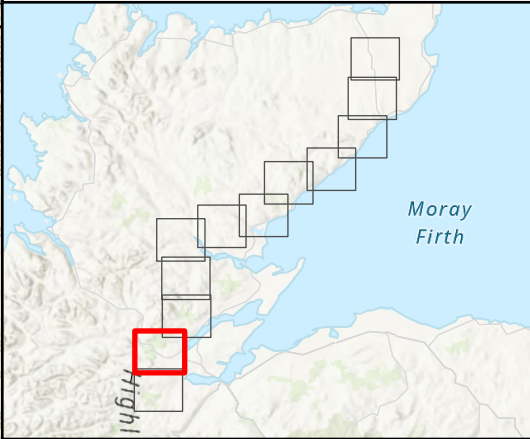


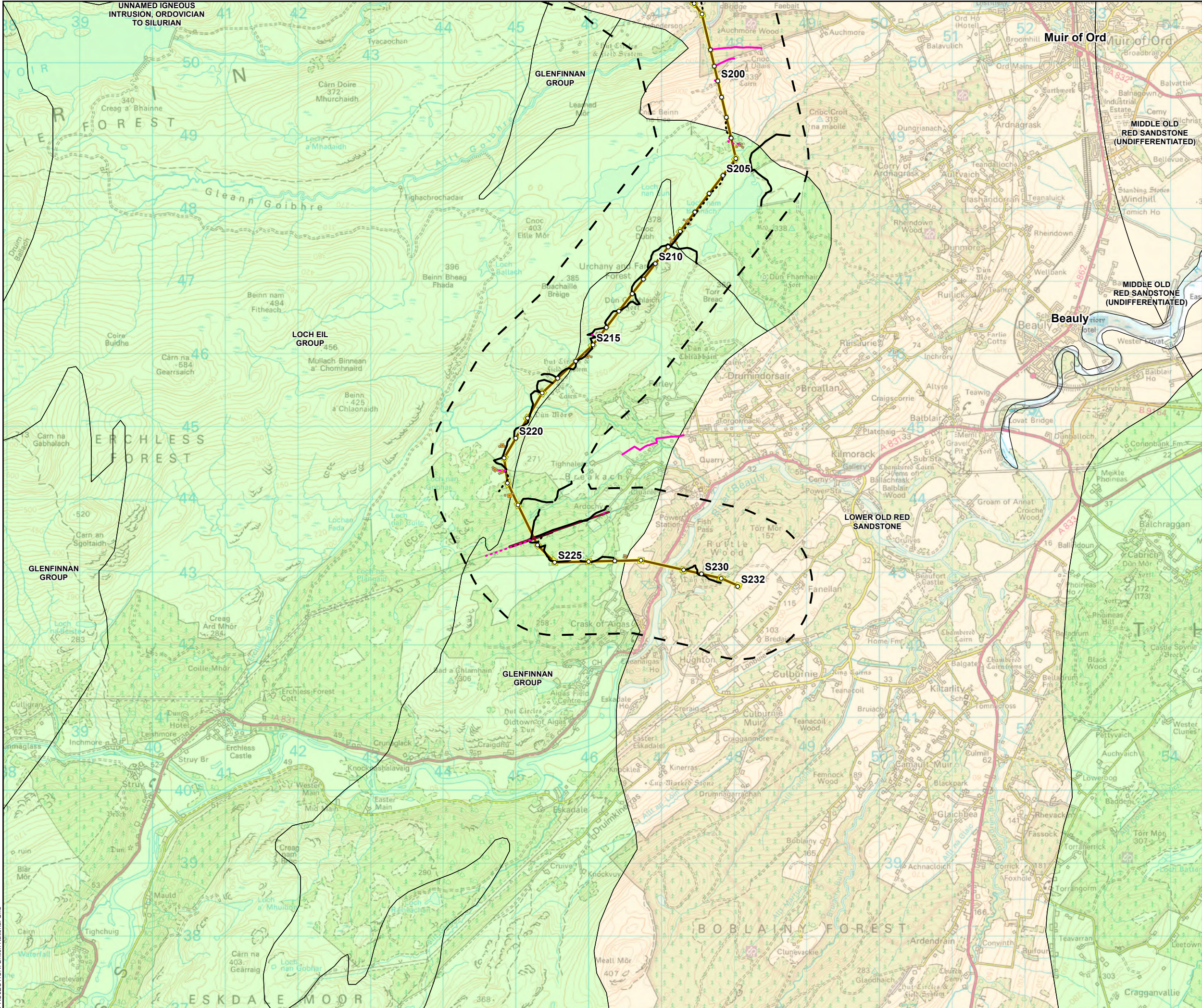
- Tower Location
- Alignment Section D
- Alignment Section E
- Special Arrangement
- Temporary Tower Compound Area
- Equipotential Zone (EPZ) (Pulling Position)
- Temporary Access Track - Trackway Panel
- Temporary Access Track - Cut/Fill
- Temporary Access Track - Floating
- Permanent Access Track - Cut/Fill
- Permanent Access Track - Floating
- Alignment Section Break
- Study Area (1 km Buffer)
- 625K Hydrogeology (British Geological Survey)
- Moderately productive aquifer
- Low productivity aquifer



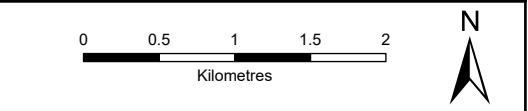
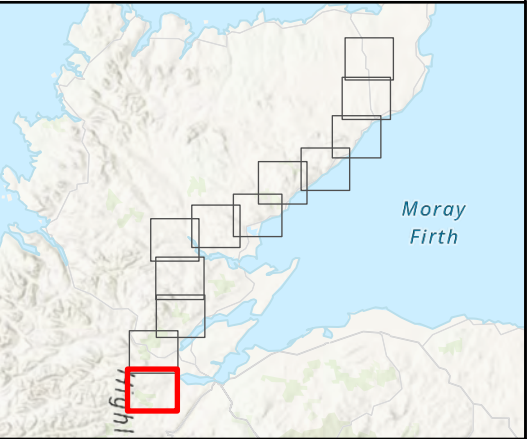
SCALE: See Scale Bar	VERSION: A04
SIZE: A3	DRAWN: JG
PROJECT: 0720281	CHECKED: RD
DATE: 11/08/2025	APPROVED: KG

Figure 10.5 - 11
Spittal - Loch Buidhe - Beauly 400 kV OHL
Connection
BGS 625,000 Scale Hydrogeology





- Tower Location
- Alignment Section E
- Special Arrangement
- Temporary Tower Compound Area
- Equipotential Zone (EPZ) (Pulling Position)
- Temporary Access Track - Cut/Fill
- Temporary Access Track - Floating
- Permanent Access Track - Cut/Fill
- Permanent Access Track - Floating
- Study Area (1 km Buffer)
- 625K Hydrogeology (British Geological Survey)
- Moderately productive aquifer
- Low productivity aquifer



SCALE: See Scale Bar	VERSION: A04
SIZE: A3	DRAWN: JG
PROJECT: 0720281	CHECKED: RD
DATE: 11/08/2025	APPROVED: KG

Figure 10.5 - 12
Spittal - Loch Buidhe - Beaulieu 400 kV OHL
Connection
BGS 625,000 Scale Hydrogeology