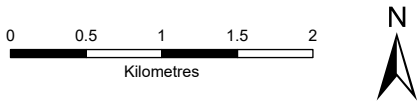
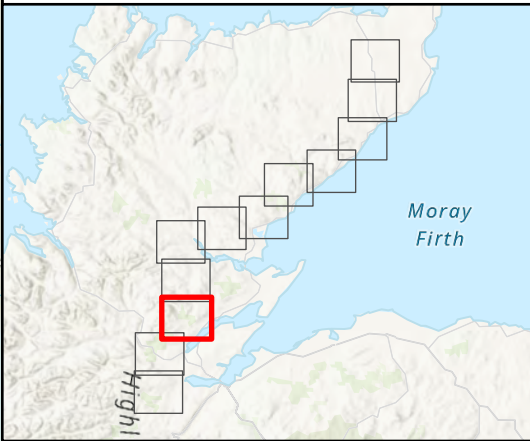


- Tower Location
- Alignment Section D
- Temporary Tower Compound Area
- Equipotential Zone (EPZ) (Pulling Position)
- Temporary Access Track - Trackway Panel
- Temporary Access Track - Cut/Fill
- Temporary Access Track - Floating
- Permanent Access Track - Cut/Fill
- Permanent Access Track - Floating
- Alignment Section Break
- Study Area (1 km Buffer)
- Drinking Water Protected Area (River) (SEPA)
- Drinking Water Protected Area (Loch) (SEPA)
- Drinking Water Protected Area (Groundwater) (SEPA)
- Drinking Water Protected Area (Catchment) (SEPA)

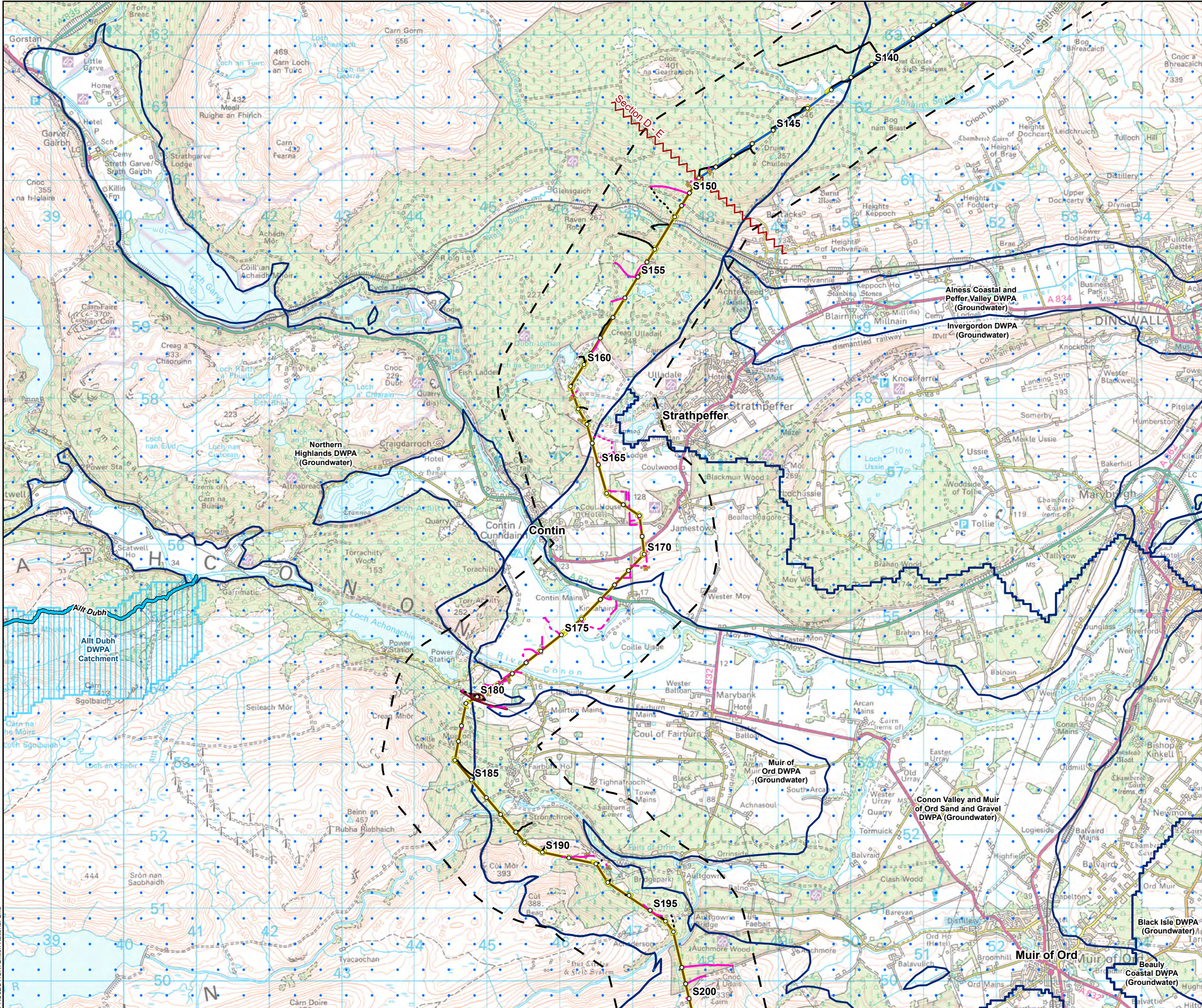


SCALE: See Scale Bar
SIZE: A3
PROJECT: 0720281
DATE: 11/08/2025

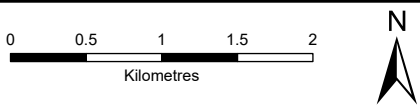
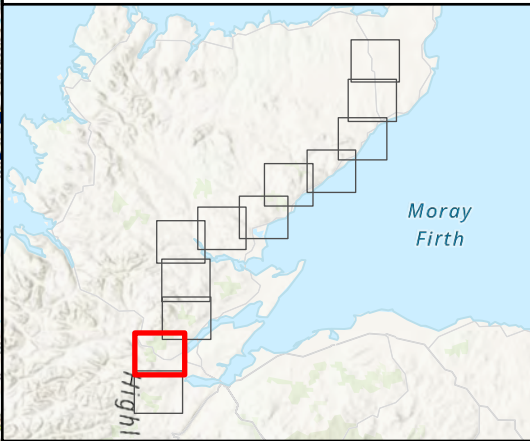
VERSION: A04
DRAWN: JG
CHECKED: RD
APPROVED: KG

Figure 10.8 - 10
Spittal - Loch Buidhe - Beauly 400 kV OHL
Connection
Drinking Water Catchments and Abstractions





- Tower Location
- Alignment Section D
- Alignment Section E
- Special Arrangement
- Temporary Tower Compound Area
- Equipotential Zone (EPZ) (Pulling Position)
- Temporary Access Track - Trackway Panel
- Temporary Access Track - Cut/Fill
- Temporary Access Track - Floating
- Permanent Access Track - Cut/Fill
- Permanent Access Track - Floating
- Alignment Section Break
- Study Area (1 km Buffer)
- Drinking Water Protected Area (River) (SEPA)
- Drinking Water Protected Area (Groundwater) (SEPA)
- Drinking Water Protected Area (Catchment) (SEPA)



| | |
|----------------------|--------------|
| SCALE: See Scale Bar | VERSION: A04 |
| SIZE: A3 | DRAWN: JG |
| PROJECT: 0720281 | CHECKED: RD |
| DATE: 11/08/2025 | APPROVED: KG |

Figure 10.8 - 11
Spittal - Loch Buidhe - Beauly 400 kV OHL
Connection
Drinking Water Catchments and Abstractions

