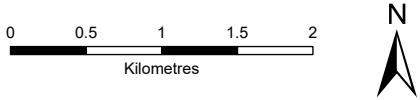
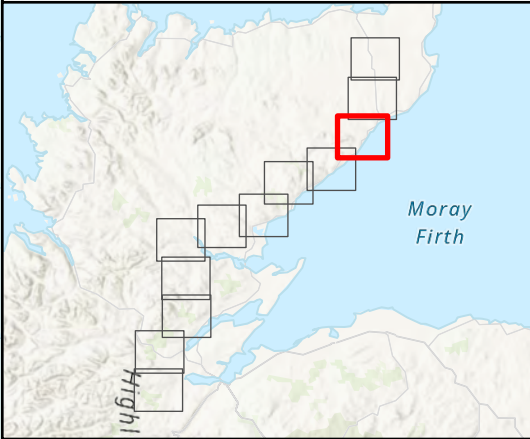
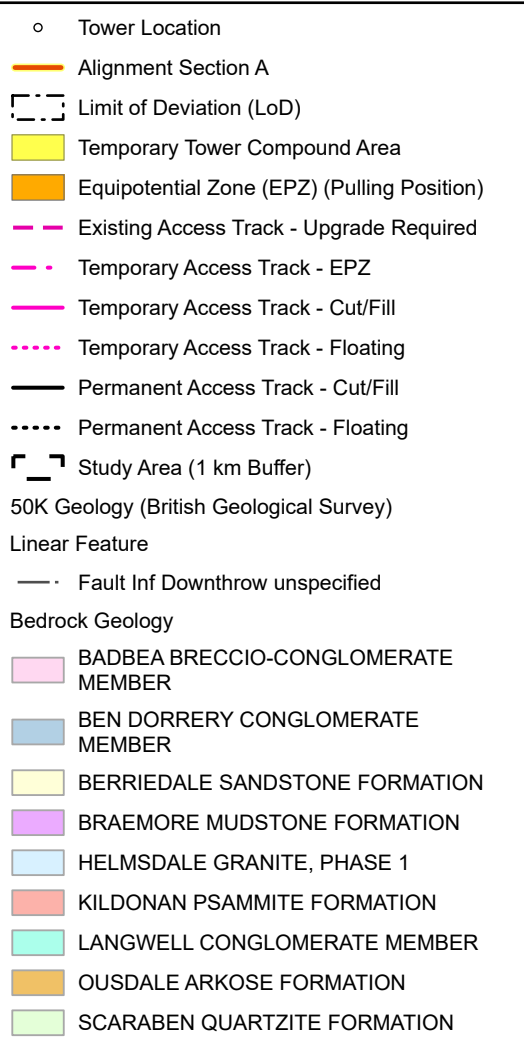
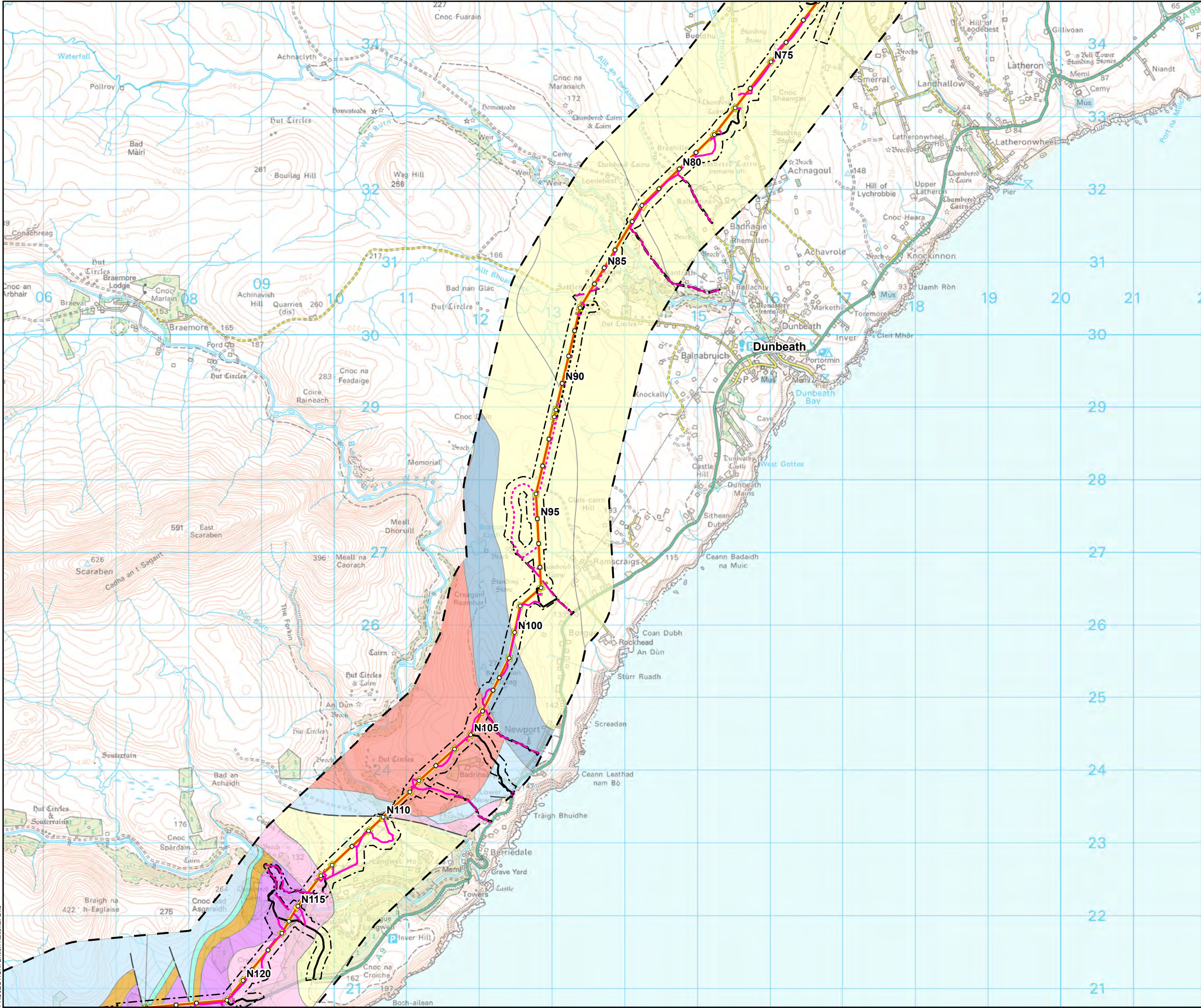


SCALE: See Scale Bar	VERSION: A06
SIZE: A3	DRAWN: JG
PROJECT: 0720281	CHECKED: CM
DATE: 11/08/2025	APPROVED: KG

Figure 11.2 - 2
Spittal - Loch Buidhe - Beauly 400 kV OHL
Connection
Bedrock Geology



PROJECTION: British National Grid

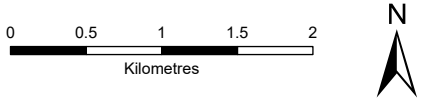
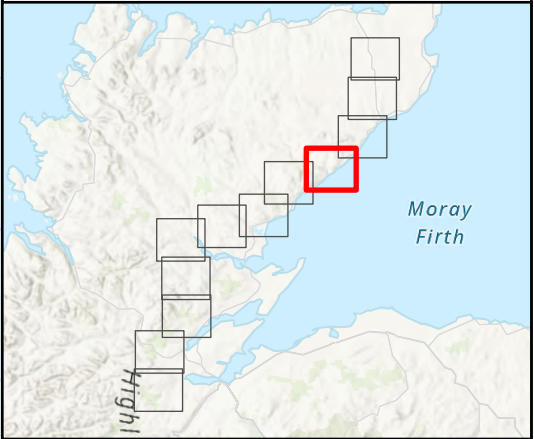
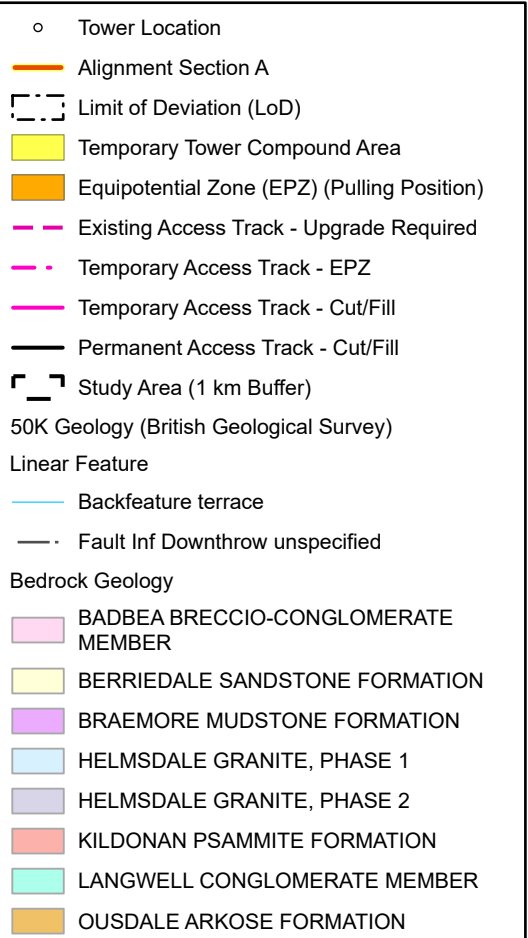
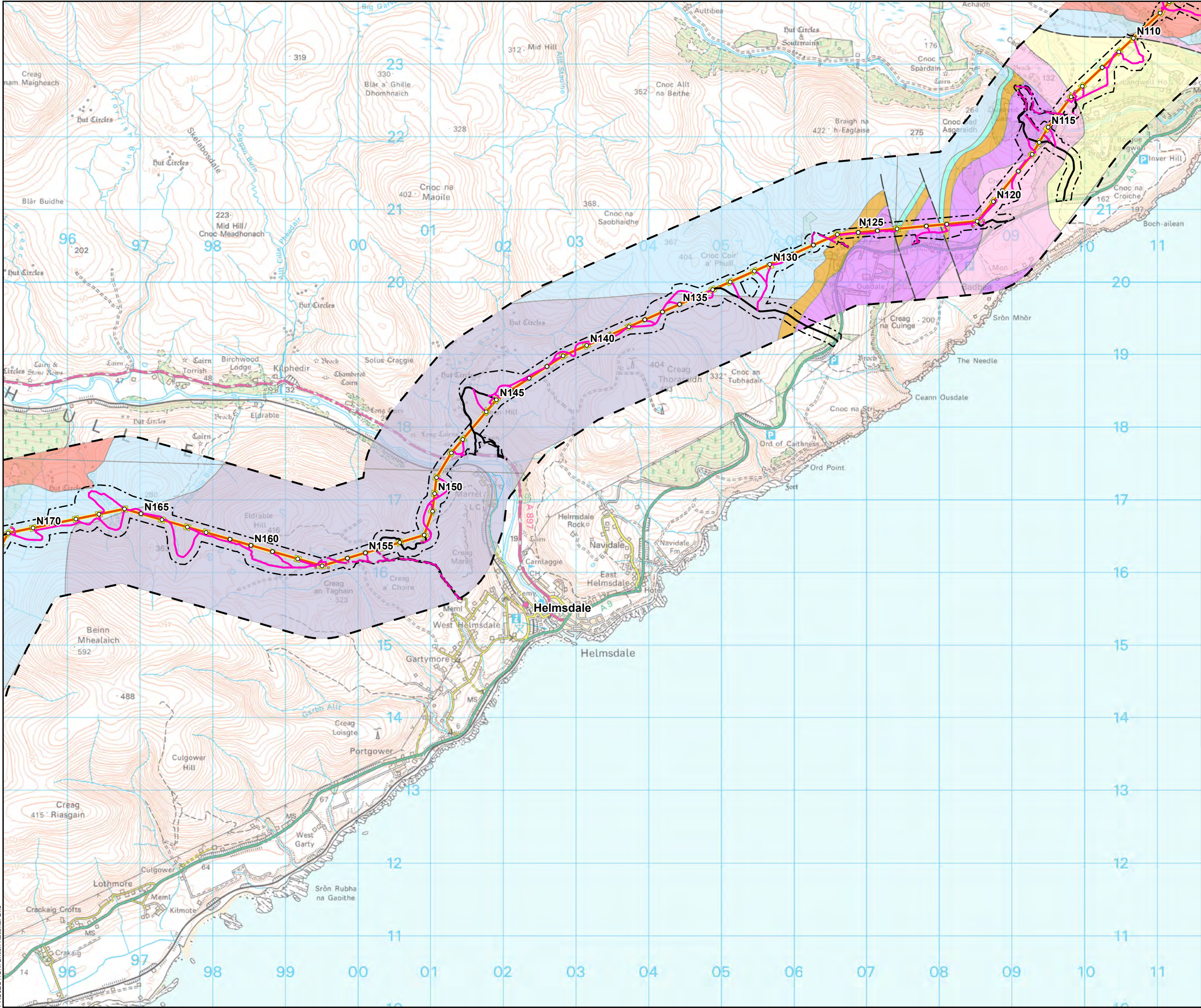


SCALE: See Scale Bar
SIZE: A3
PROJECT: 0720281
DATE: 11/08/2025

VERSION: A06
DRAWN: JG
CHECKED: CM
APPROVED: KG

Figure 11.2 - 3
Spittal - Loch Buidhe - Beauly 400 kV OHL
Connection
Bedrock Geology





SCALE: See Scale Bar

SIZE: A3

PROJECT: 0720281

DATE: 11/08/2025

VERSION: A06

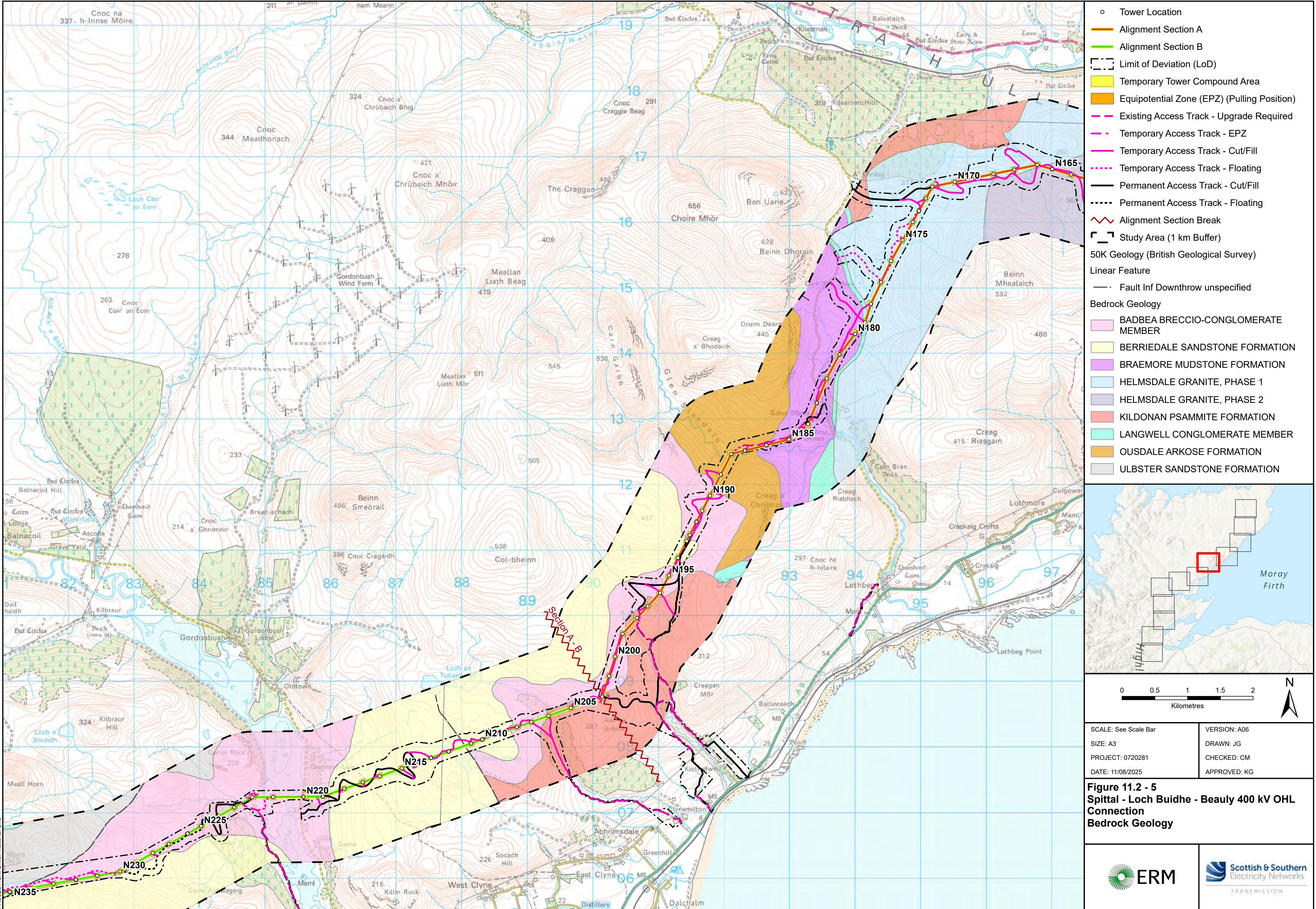
DRAWN: JG

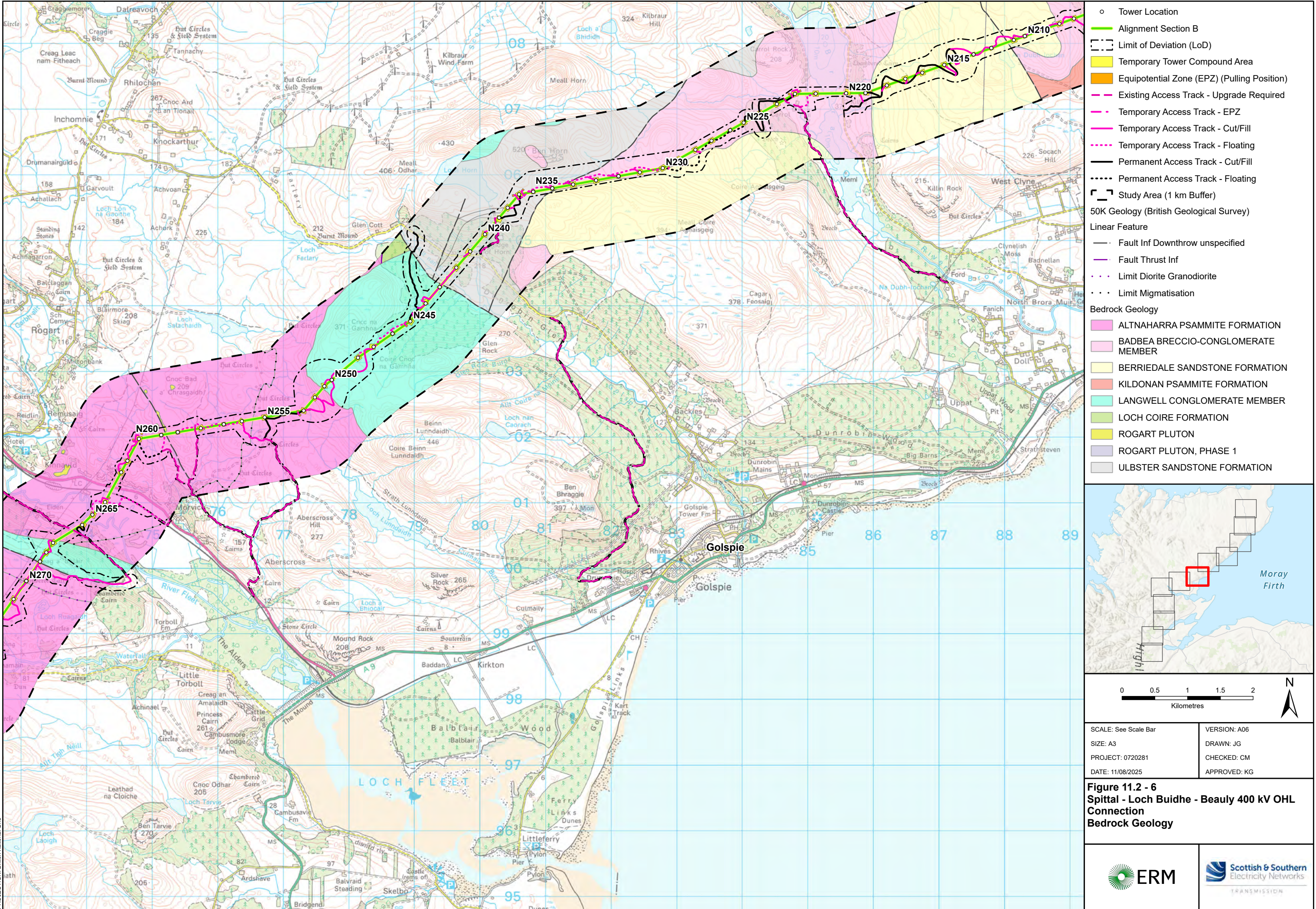
CHECKED: CM

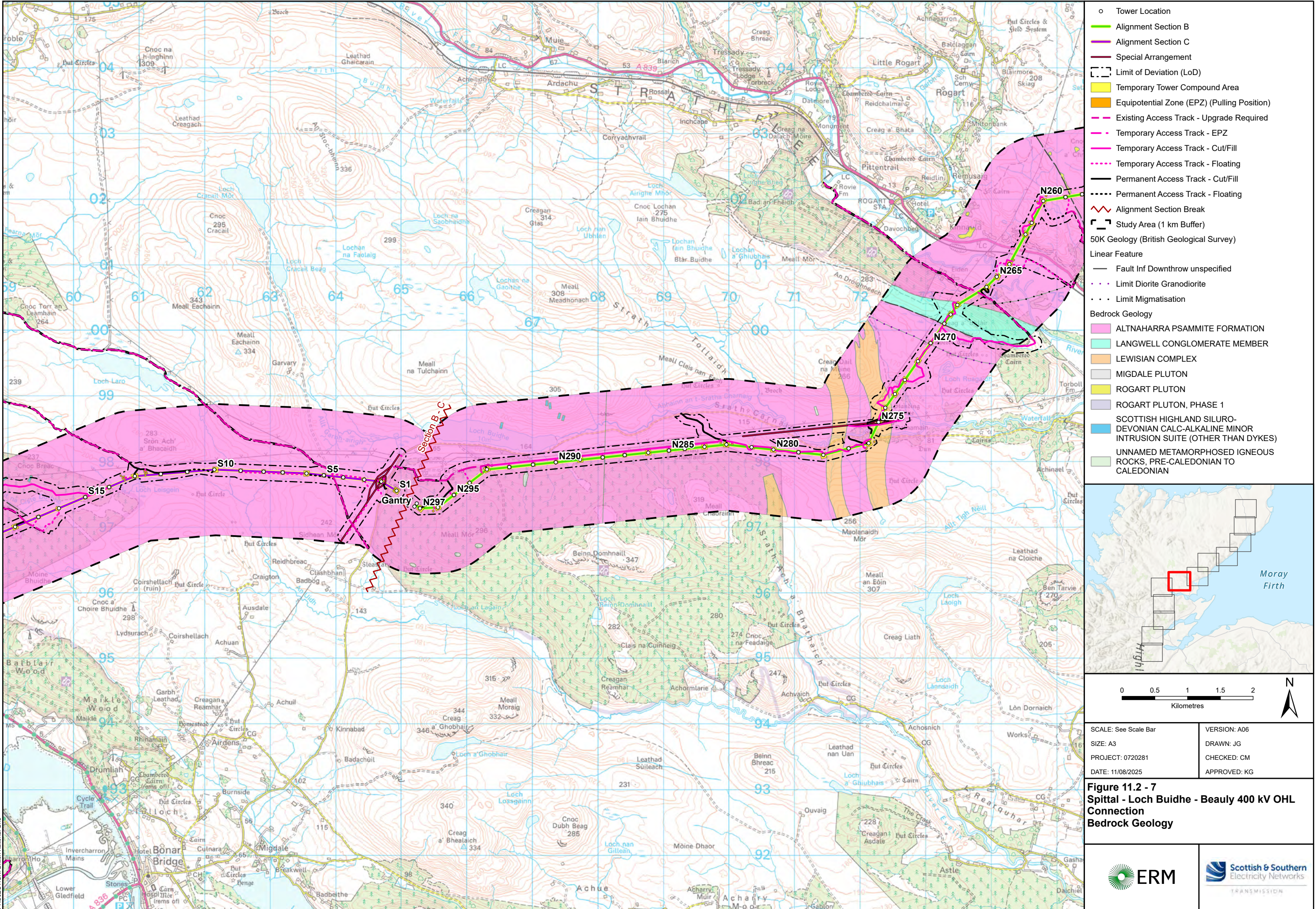
APPROVED: KG

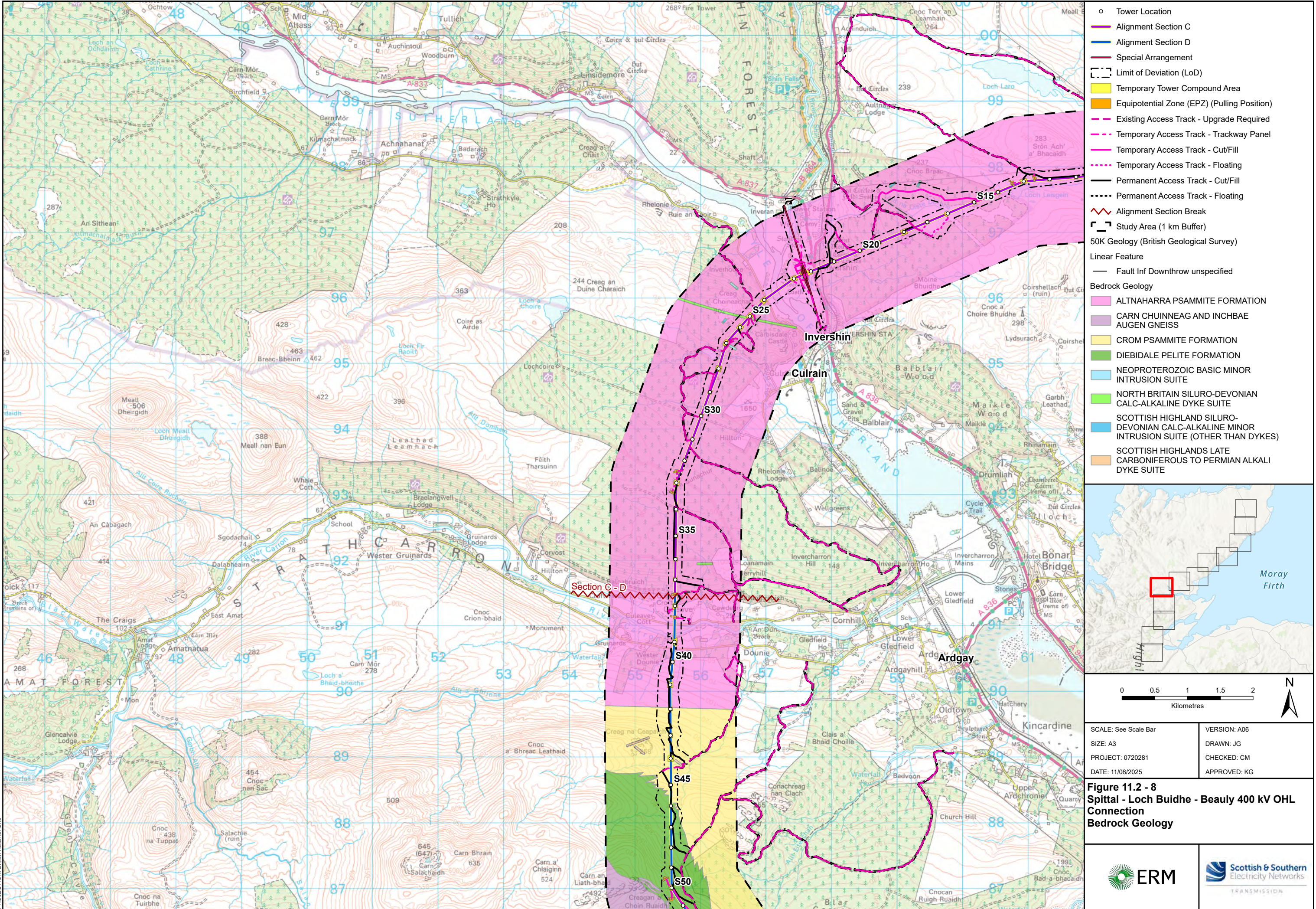
Figure 11.2 - 4
Spittal - Loch Buidhe - Beauly 400 kV OHL
Connection
Bedrock Geology

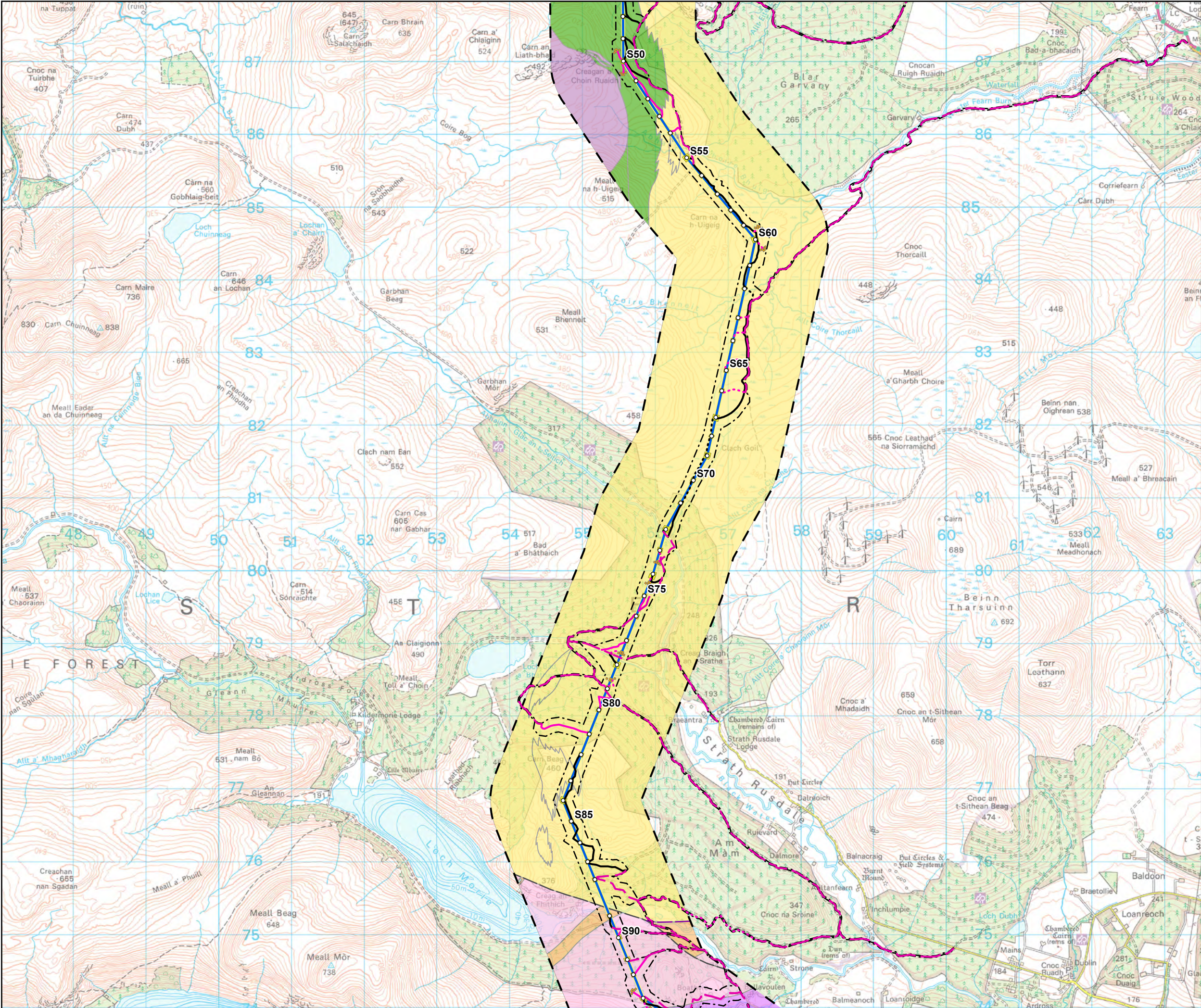




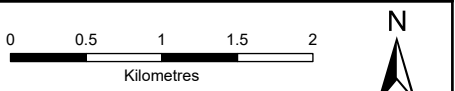
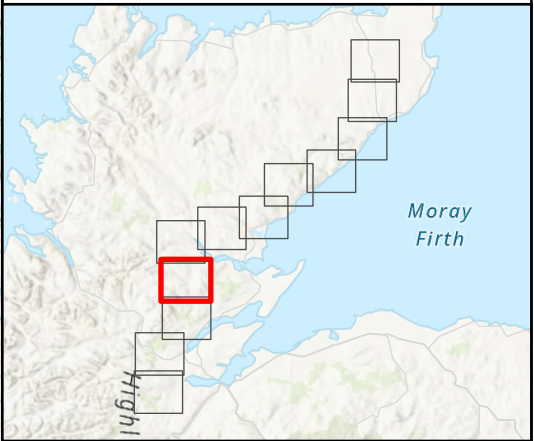








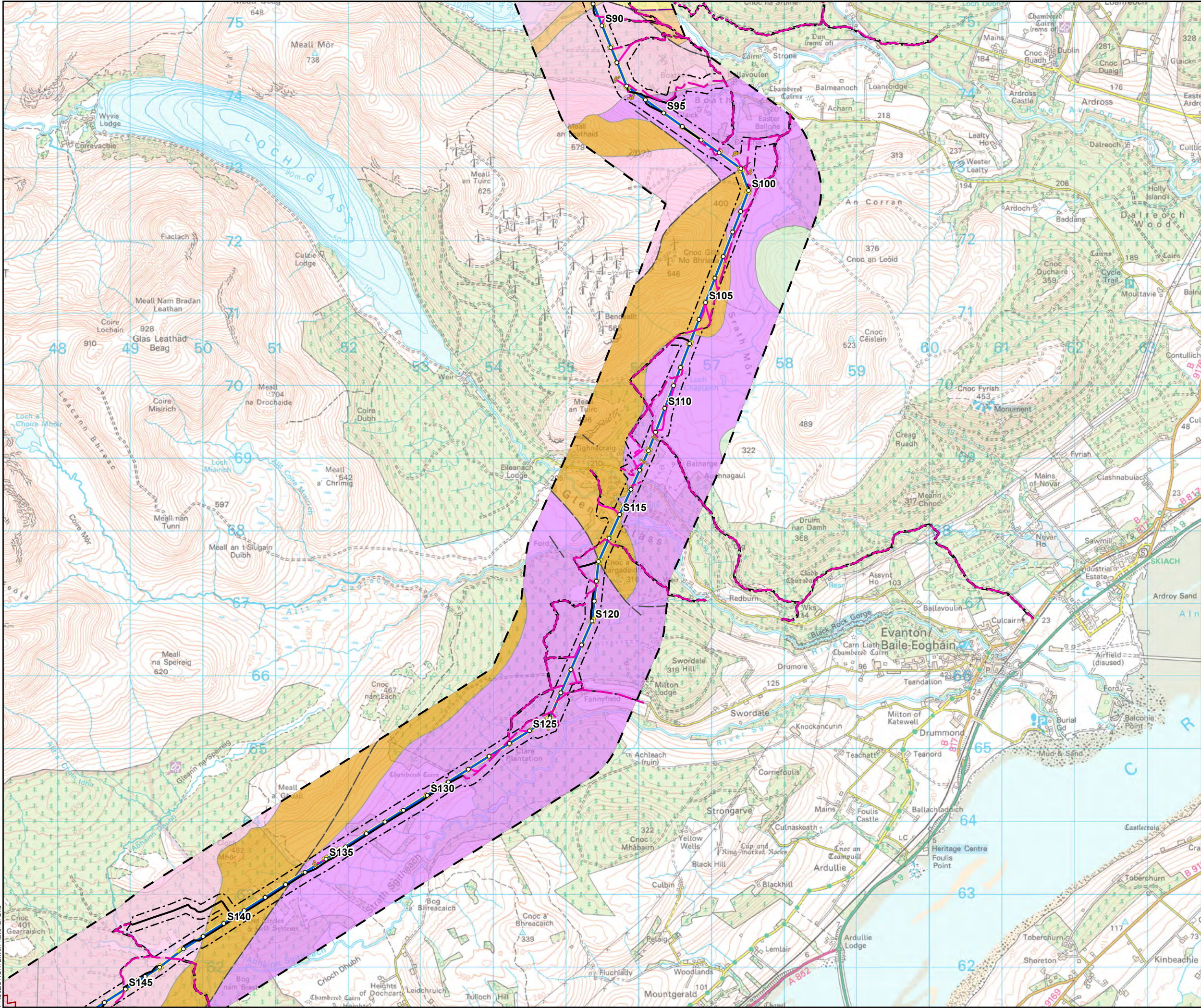
- Tower Location
- Alignment Section D
- - - Limit of Deviation (LoD)
- Temporary Tower Compound Area
- Equipotential Zone (EPZ) (Pulling Position)
- Existing Access Track - Upgrade Required
- Temporary Access Track - Cut/Fill
- Temporary Access Track - Floating
- Permanent Access Track - Cut/Fill
- Permanent Access Track - Floating
- Study Area (1 km Buffer)
- 50K Geology (British Geological Survey)
- Linear Feature
 - Fault Inf Downthrow unspecified
 - Fault Thrust Inf
- Bedrock Geology
 - BEN WYVIS PELITE FORMATION
 - BRAEMORE MUDSTONE FORMATION
 - CARN CHUINNEAG AND INCHBAE AUGEN GNEISS
 - CROM PSAMMITE FORMATION
 - DIEBIDALE PELITE FORMATION
 - PRE-CALEDONIAN AND/OR CALEDONIAN MINOR INTRUSION SUITE
 - TARVIE PSAMMITE FORMATION



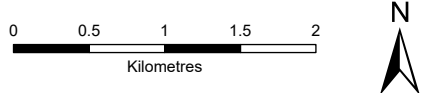
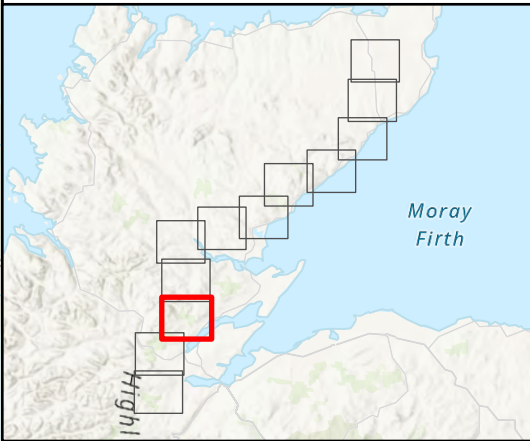
SCALE: See Scale Bar	VERSION: A06
SIZE: A3	DRAWN: JG
PROJECT: 0720281	CHECKED: CM
DATE: 11/08/2025	APPROVED: KG

Figure 11.2 - 9
Spittal - Loch Buidhe - Beauly 400 kV OHL
Connection
Bedrock Geology





- Tower Location
- Alignment Section D
- - - Limit of Deviation (LoD)
- Temporary Tower Compound Area
- Equipotential Zone (EPZ) (Pulling Position)
- Existing Access Track - Upgrade Required
- Temporary Access Track - Trackway Panel
- Temporary Access Track - Cut/Fill
- Temporary Access Track - Floating
- Permanent Access Track - Cut/Fill
- Permanent Access Track - Floating
- Alignment Section Break
- Study Area (1 km Buffer)
- 50K Geology (British Geological Survey)
- Linear Feature
 - Fault Inf Downthrow unspecified
 - Fault Thrust Inf
- Bedrock Geology
 - BEN WYVIS PELITE FORMATION
 - BRAEMORE MUDSTONE FORMATION
 - CNOC FYRISH CONGLOMERATE FORMATION
 - CROM PSAMMITE FORMATION
 - OUSDALE ARKOSE FORMATION
 - TARVIE PSAMMITE FORMATION



SCALE: See Scale Bar
SIZE: A3
PROJECT: 0720281
DATE: 11/08/2025

VERSION: A06
DRAWN: JG
CHECKED: CM
APPROVED: KG

Figure 11.2 - 10
Spittal - Loch Buidhe - Beaulieu 400 kV OHL
Connection
Bedrock Geology

