

SCALE: See Scale Bar

SIZE: A3

PROJECT: 0720281

DATE: 11/08/2025

VERSION: A06

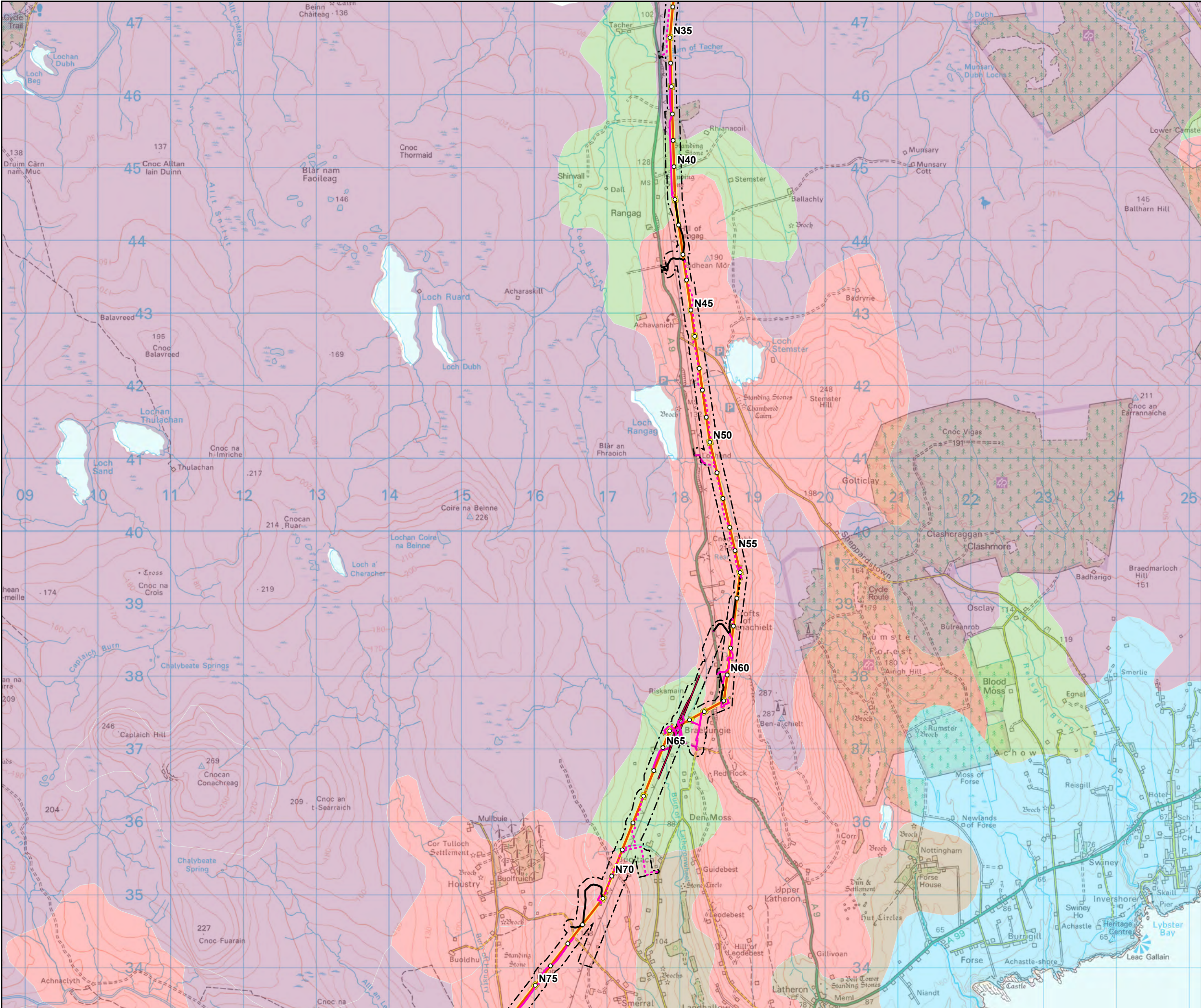
DRAWN: JG

CHECKED: CM

APPROVED: KG

Figure 11.3 - 1
Spittal - Loch Buidhe - Beauly 400 kV OHL
Connection
National Soil Map of Scotland





Tower Location

Alignment Section A

Special Arrangement

Limit of Deviation (LoD)

Temporary Tower Compound Area

Equipotential Zone (EPZ) (Pulling Position)

Existing Access Track - Upgrade Required

Temporary Access Track - EPZ

Temporary Access Track - Cut/Fill

Temporary Access Track - Floating

Permanent Access Track - Cut/Fill

Permanent Access Track - Floating

National Soil Map of Scotland (The James Hutton Institute)

Generalised Soil Type

Brown soils

Mineral gleys

Peat

Peaty gleys

Peaty podzols

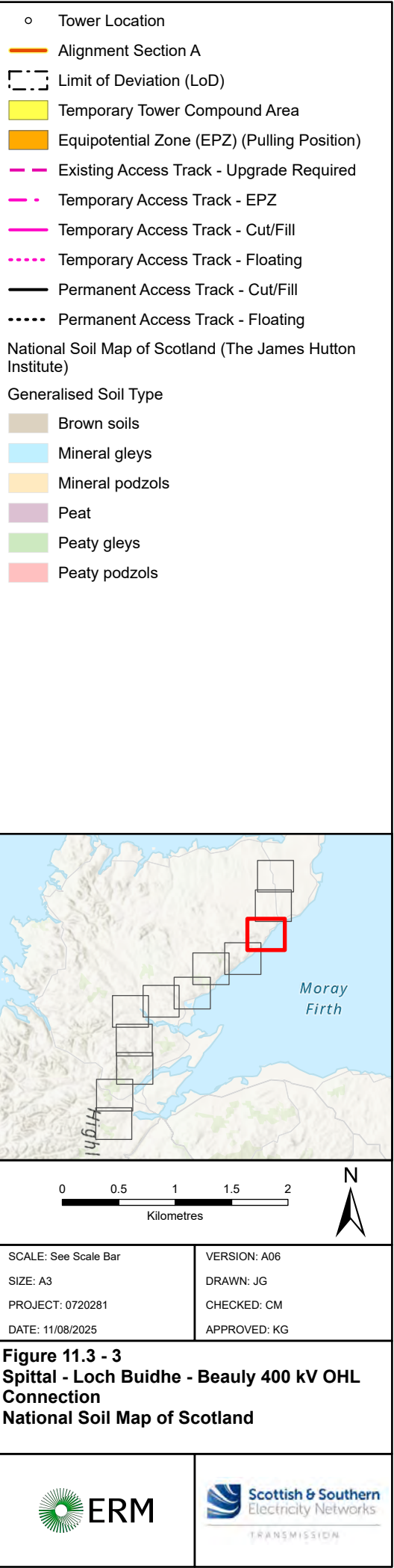
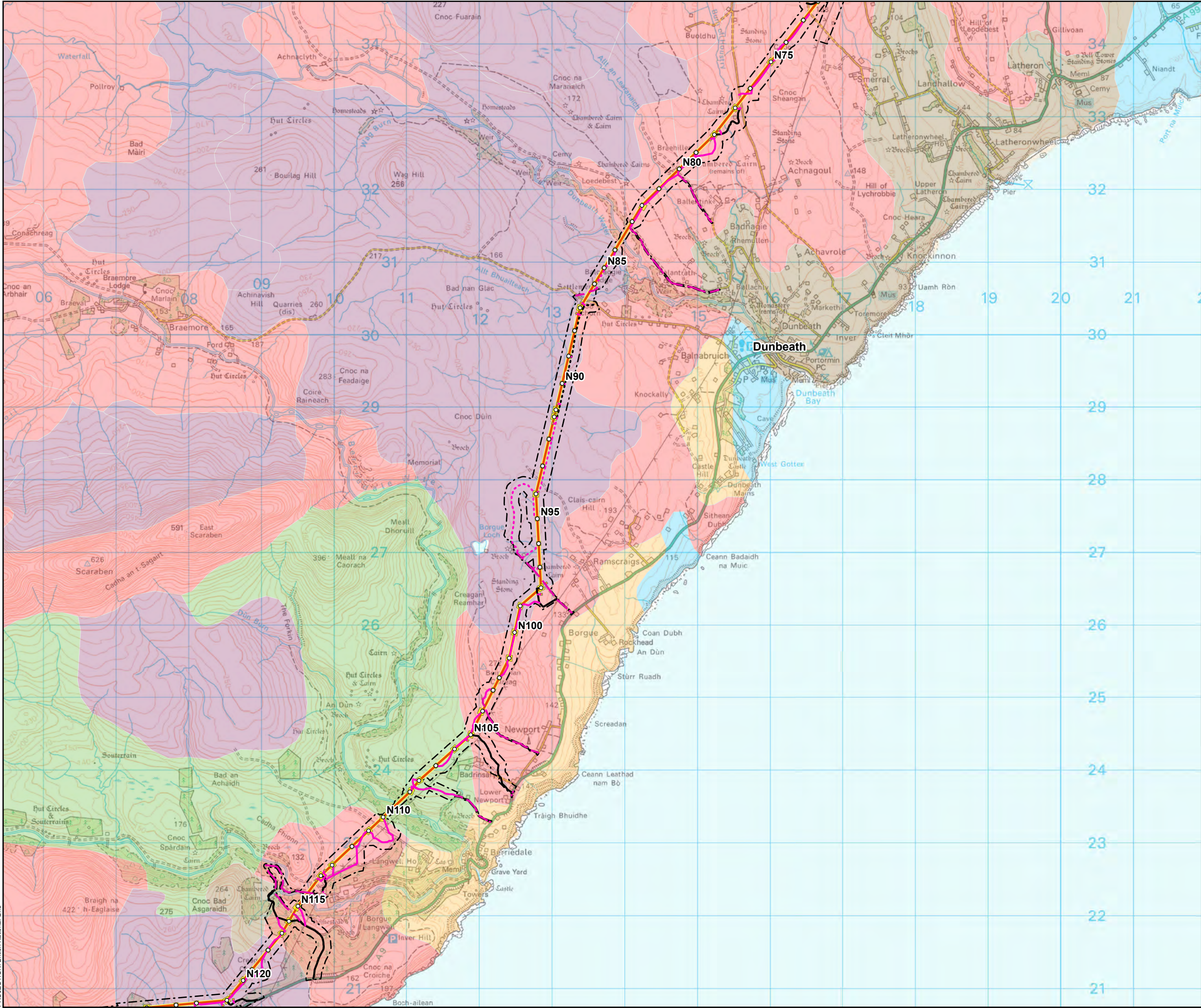
SCALE: See Scale Bar	VERSION: A06
SIZE: A3	DRAWN: JG
PROJECT: 0720281	CHECKED: CM
DATE: 11/08/2025	APPROVED: KG

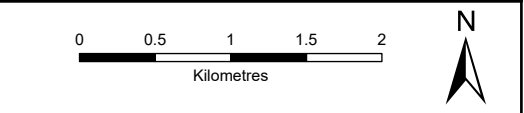
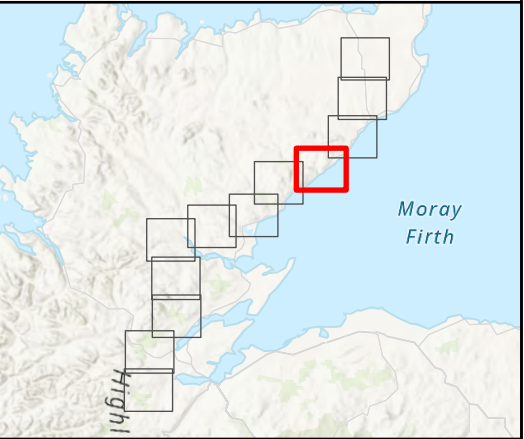
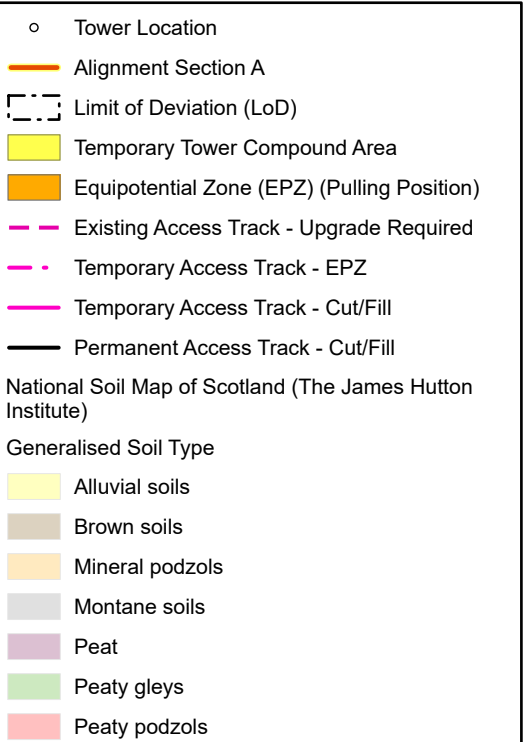
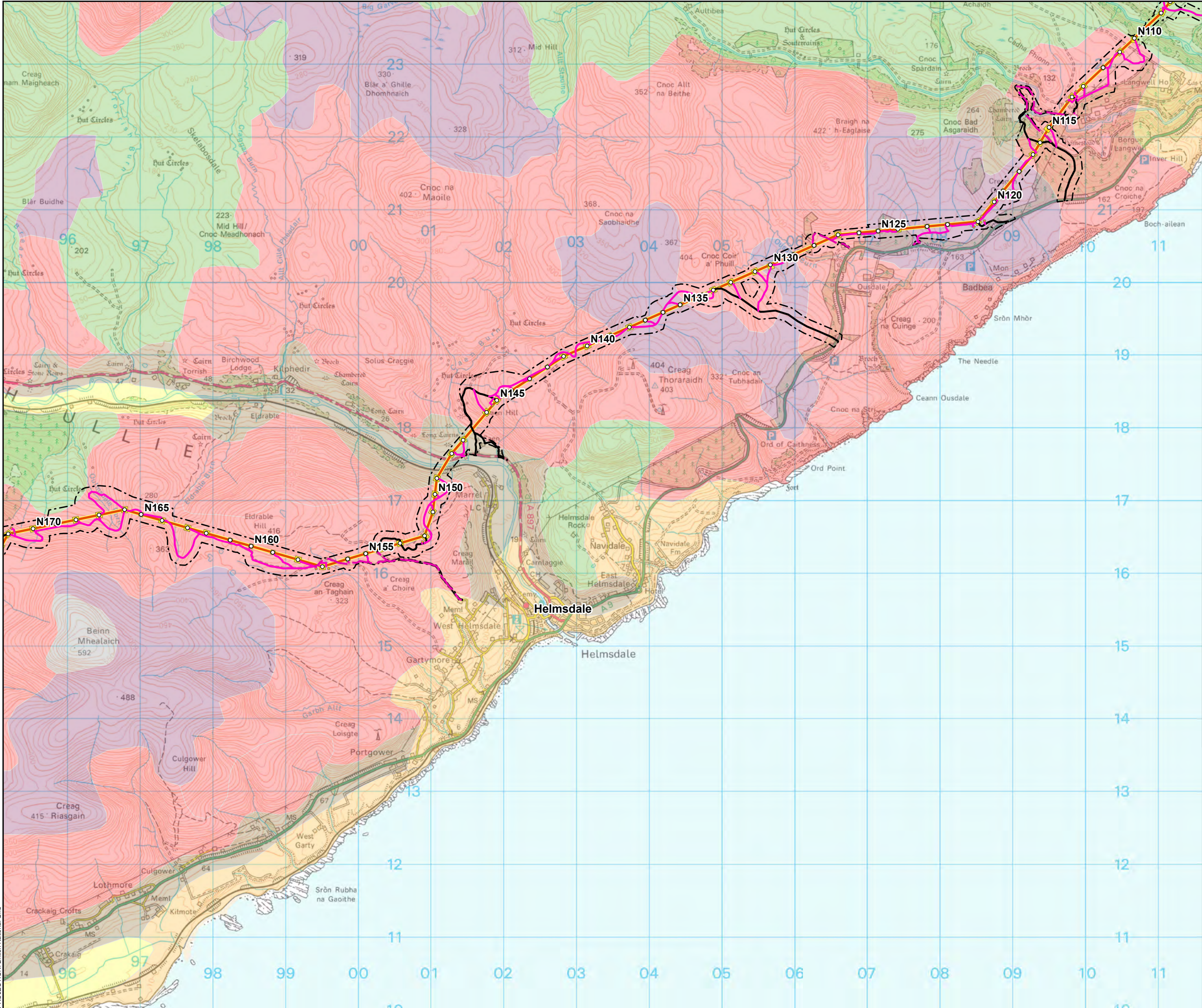
Figure 11.3 - 2
Spittal - Loch Buidhe - Beauly 400 kV OHL
Connection
National Soil Map of Scotland

PROJECTION: British National Grid

© Landmark Information Group Limited and/or its Data Suppliers (All rights reserved 2010). National Soil Map of Scotland copyright and database right The James Hutton Institute (2020). Used with the permission of The James Hutton Institute. All rights reserved. Any public sector information contained in these data is licensed under the Open Government Licence v2.0. Esri, CGIAR, N Robinson, NCEAS, USGS, Sources: Esri, TomTom, Garmin, FAO, NOAA, USGS, © OpenStreetMap contributors, and the GIS User Community

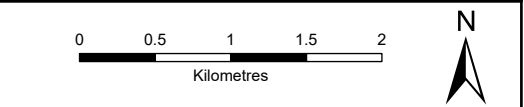
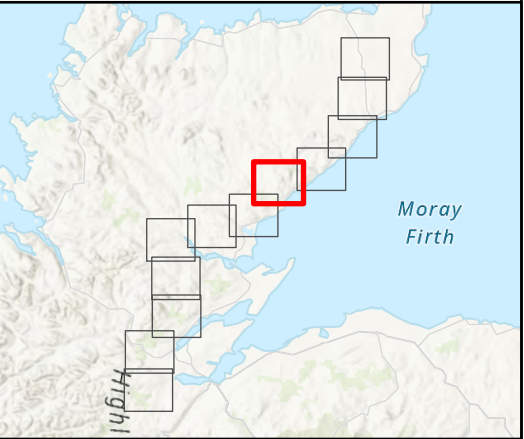
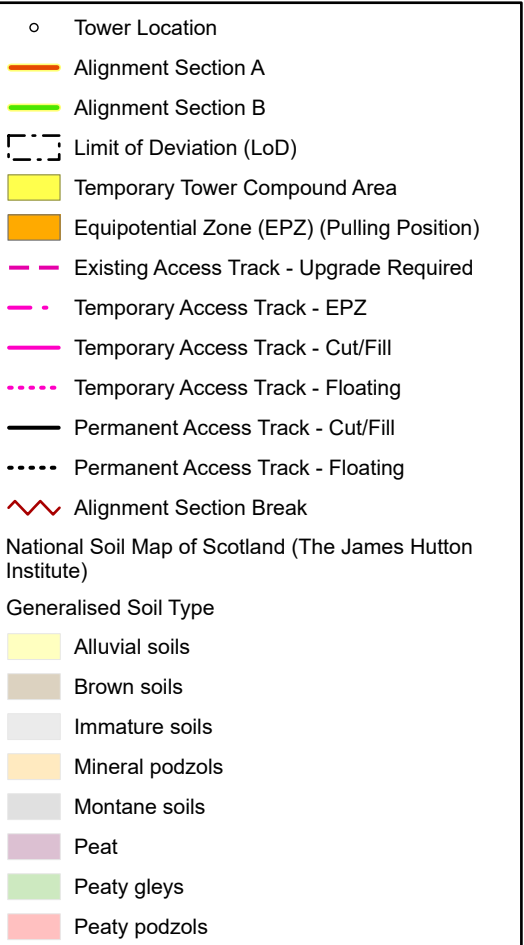
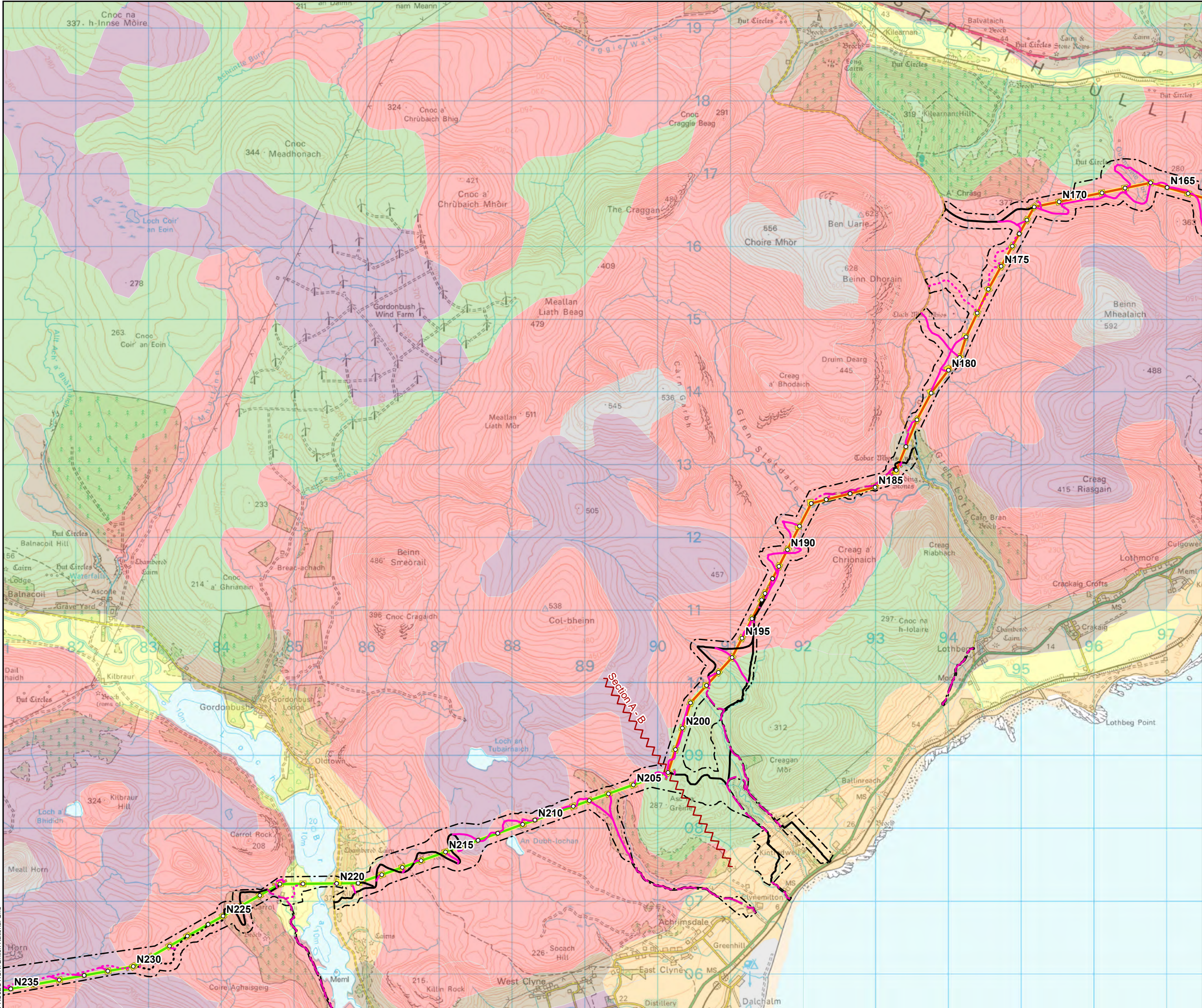
Path: \\UKSPRDISGIS01\Data\London\Projects\0652629 - SSE Beauly to Loch Buidhe\Maps\0720281 - SLBB - Geological Environment.aprx / 0720281 - SLBB - EIA - Geology and Soils Environment - National Soil Map of Scotland - A06





SCALE: See Scale Bar	VERSION: A06
SIZE: A3	DRAWN: JG
PROJECT: 0720281	CHECKED: CM
DATE: 11/08/2025	APPROVED: KG

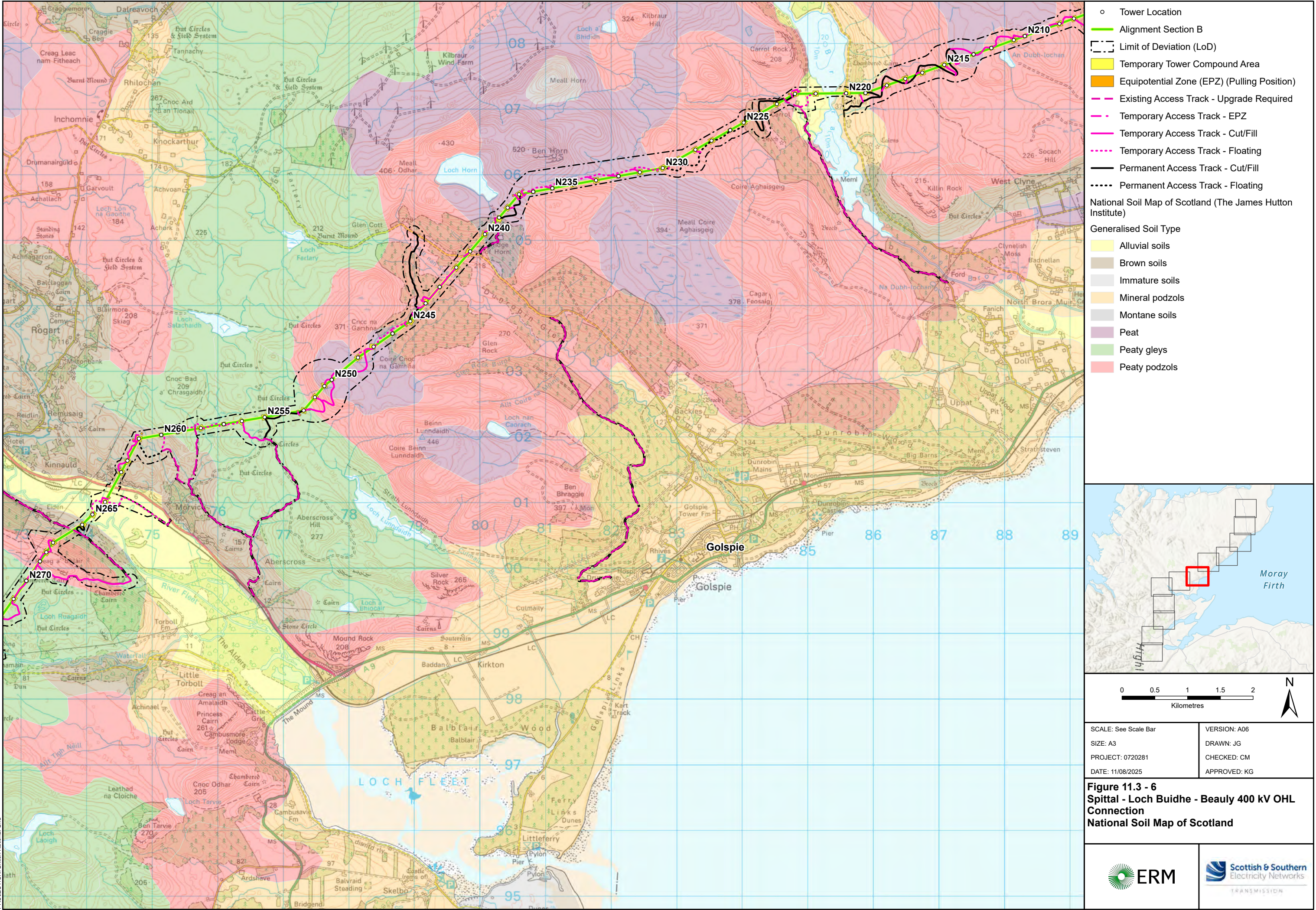
Figure 11.3 - 4
Spittal - Loch Buidhe - Beauly 400 kV OHL
Connection
National Soil Map of Scotland

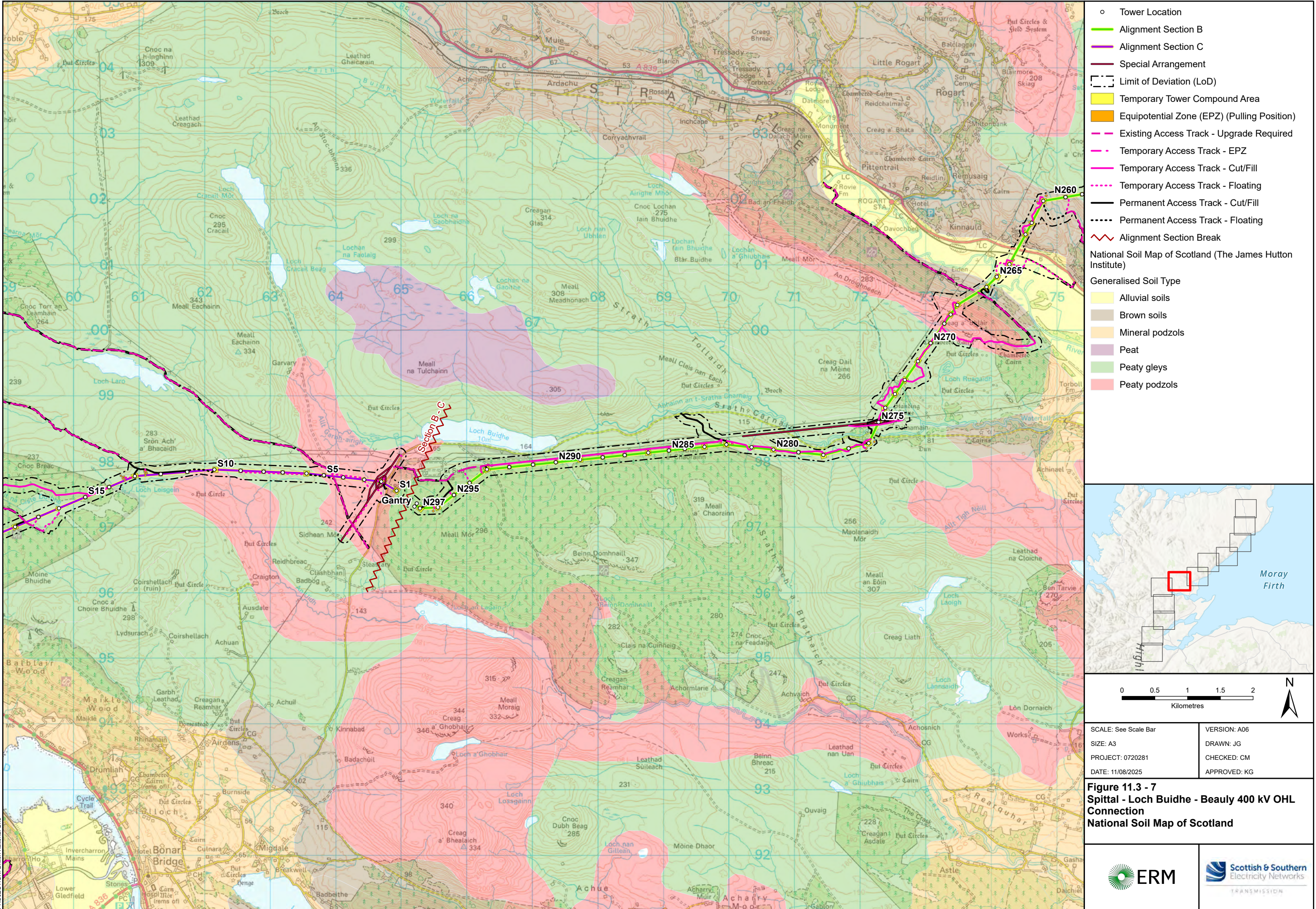


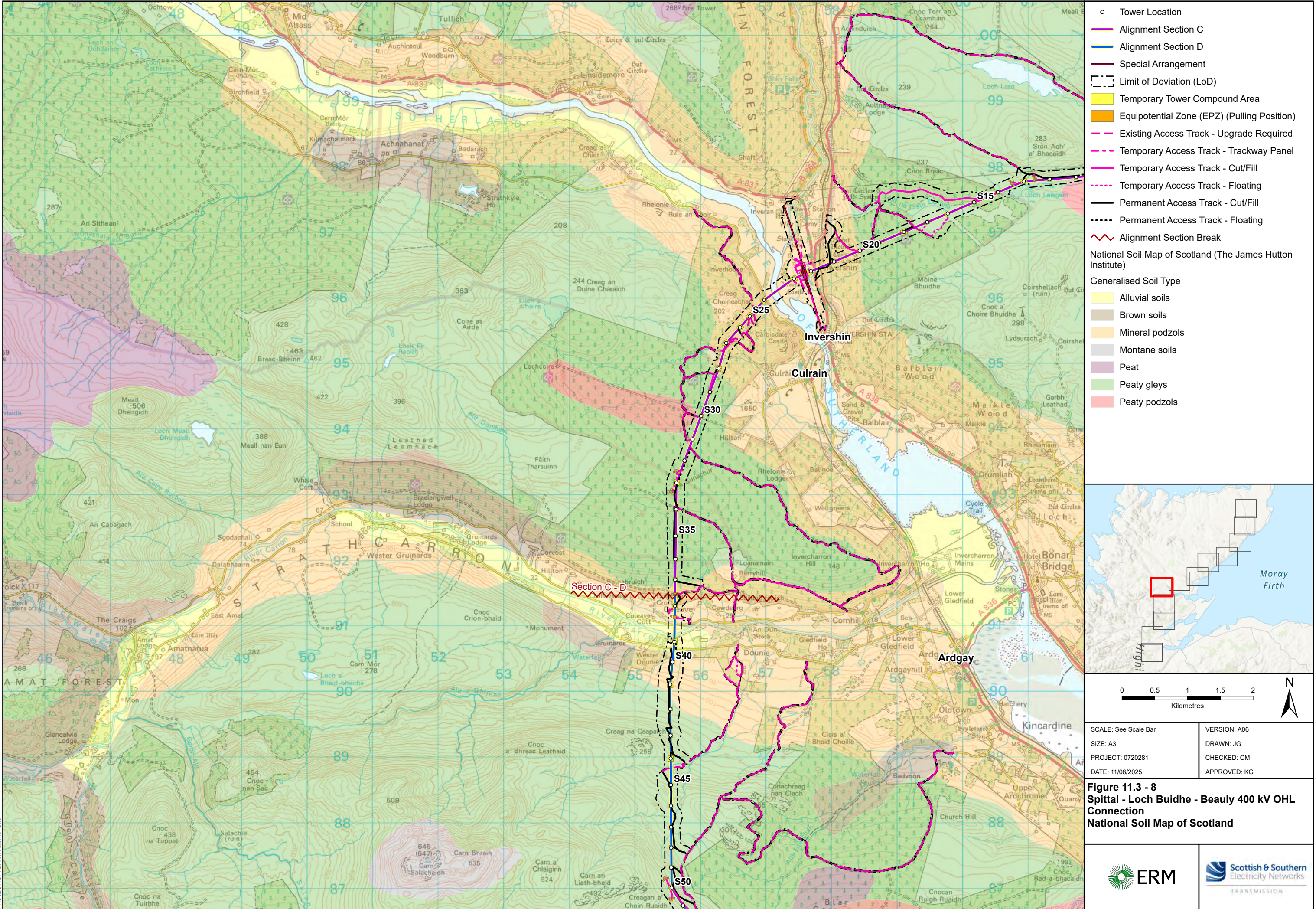
SCALE: See Scale Bar	VERSION: A06
SIZE: A3	DRAWN: JG
PROJECT: 0720281	CHECKED: CM
DATE: 11/08/2025	APPROVED: KG

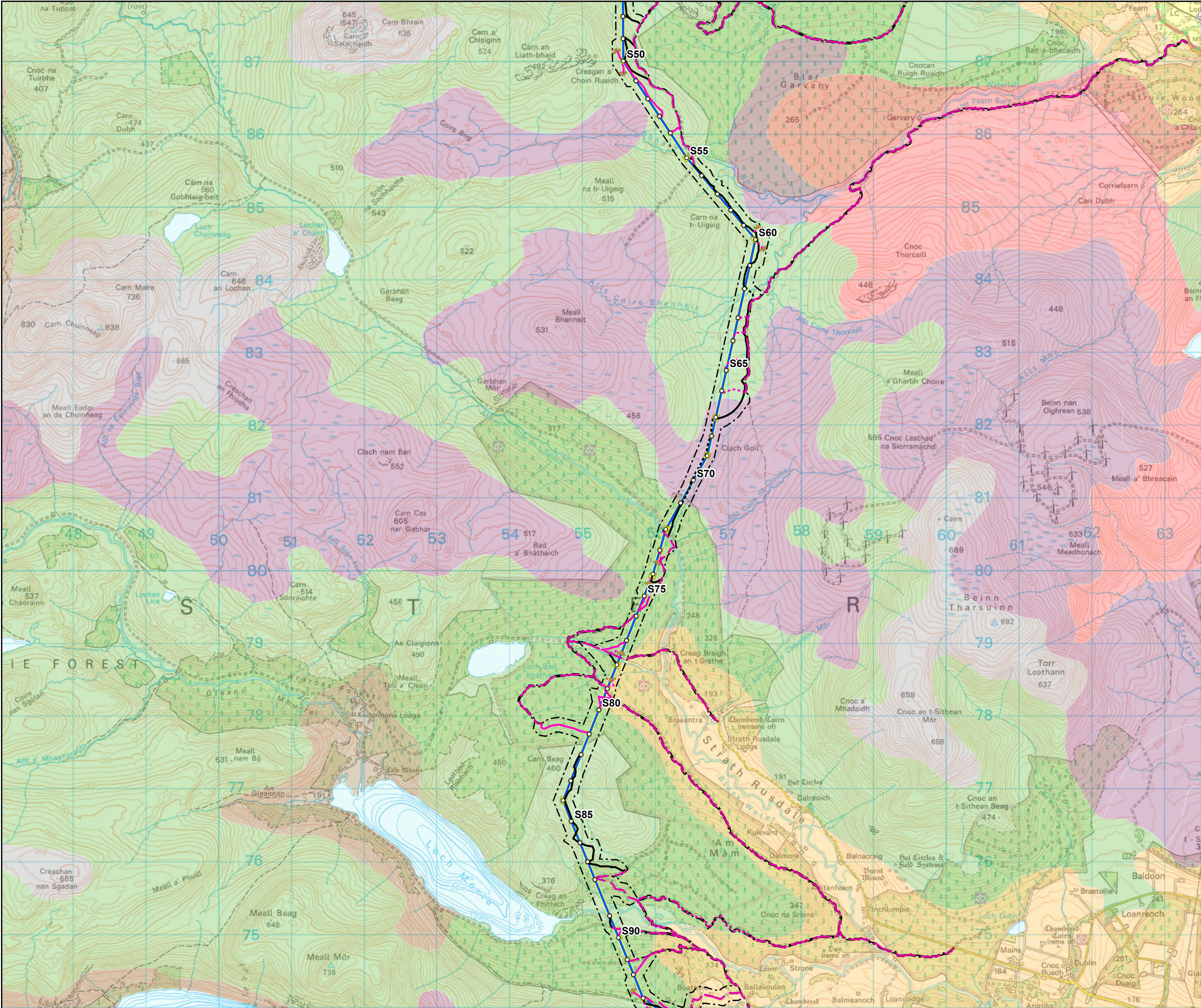
Figure 11.3 - 5
Spittal - Loch Buidhe - Beauly 400 kV OHL
Connection
National Soil Map of Scotland







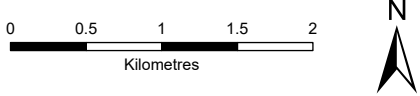
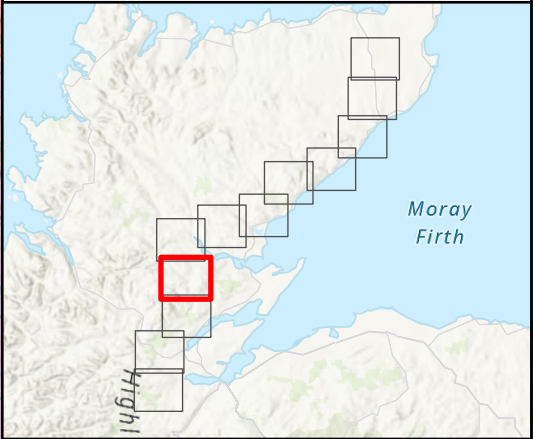




- Tower Location
- Alignment Section D
- - - Limit of Deviation (LoD)
- Temporary Tower Compound Area
- Equipotential Zone (EPZ) (Pulling Position)
- Existing Access Track - Upgrade Required
- Temporary Access Track - Cut/Fill
- Temporary Access Track - Floating
- Permanent Access Track - Cut/Fill
- Permanent Access Track - Floating

National Soil Map of Scotland (The James Hutton Institute)

- Generalised Soil Type
- Alluvial soils
 - Brown soils
 - Mineral podzols
 - Montane soils
 - Peat
 - Peaty gleys
 - Peaty podzols



SCALE: See Scale Bar	VERSION: A06
SIZE: A3	DRAWN: JG
PROJECT: 0720281	CHECKED: CM
DATE: 11/08/2025	APPROVED: KG

Figure 11.3 - 9
Spittal - Loch Buidhe - Beauly 400 kV OHL
Connection
National Soil Map of Scotland

