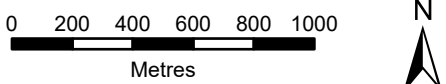
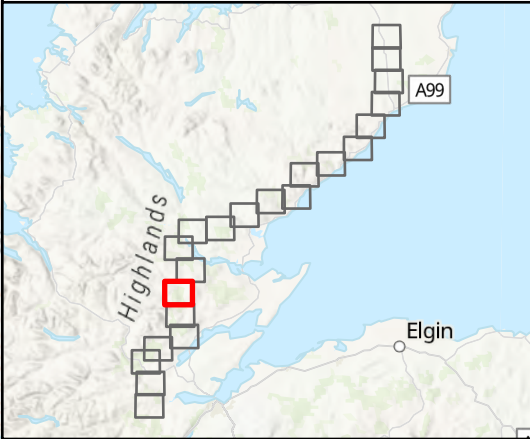


- Tower Location
- Alignment Section D
- - - Limit of Deviation (LoD)
- Temporary Access Track - Cut/Fill
- ... Temporary Access Track - Floating
- Permanent Access Track - Cut/Fill
- ... Permanent Access Track - Floating
- 90 m Operational Corridor
- Equipotential Zone (EPZ) (Pulling Position)
- EPZ Buffer
- 20 m Access Corridor
- Conifer Woodland within Operational Corridor and Special Arrangements Buffer (90m)
- Broadleaved Woodland within Operational Corridor and Special Arrangements Buffer (90m)
- Felled Woodland within Operational Corridor
- Management Felling

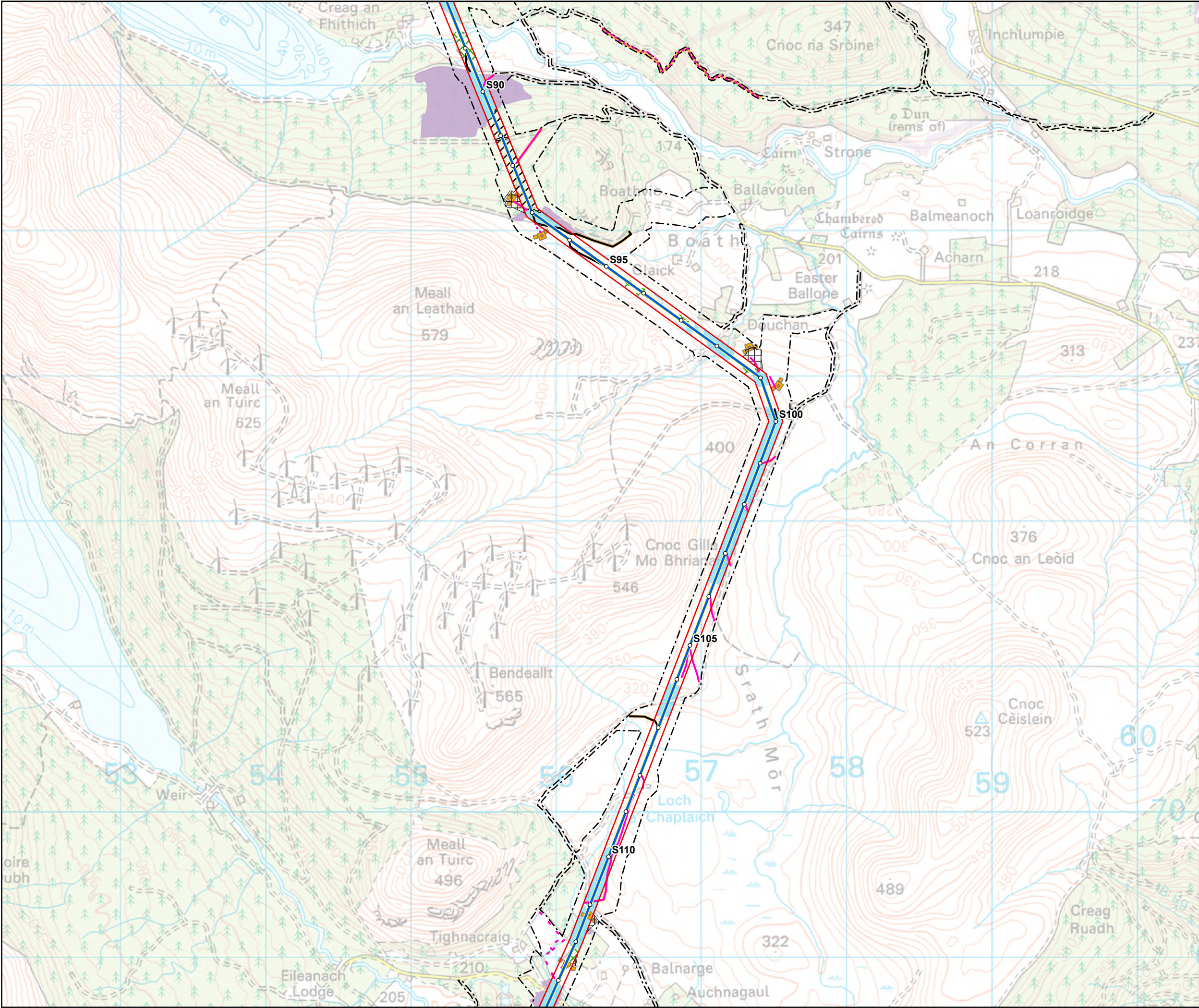


SCALE: See Scale Bar	VERSION: A02
SIZE: A3	DRAWN: BW
PROJECT: 0720281	CHECKED: BM
DATE: 07/08/2025	APPROVED: KG

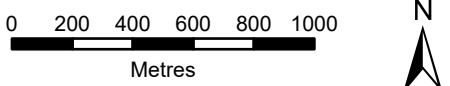
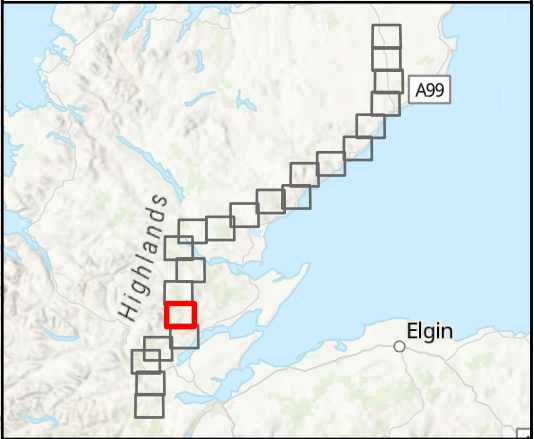
**Figure 13.1 - 16**  
**Spittal - Loch Buidhe - Beaulieu 400 kV OHL**  
**Connection**  
**Proposed Development Felling Plan**







- Tower Location
- Alignment Section D
- - - Limit of Deviation (LoD)
- Temporary Access Track - Cut/Fill
- ... Temporary Access Track - Floating
- - - Temporary Access Track - Trackway Panels
- Permanent Access Track - Cut/Fill
- 90 m Operational Corridor
- Equipotential Zone (EPZ) (Pulling Position)
- EPZ Buffer
- 20 m Access Corridor
- Conifer Woodland within Operational Corridor and Special Arrangements Buffer (90m)
- Broadleaved Woodland within Operational Corridor and Special Arrangements Buffer (90m)
- Felled Woodland within Operational Corridor
- Management Felling

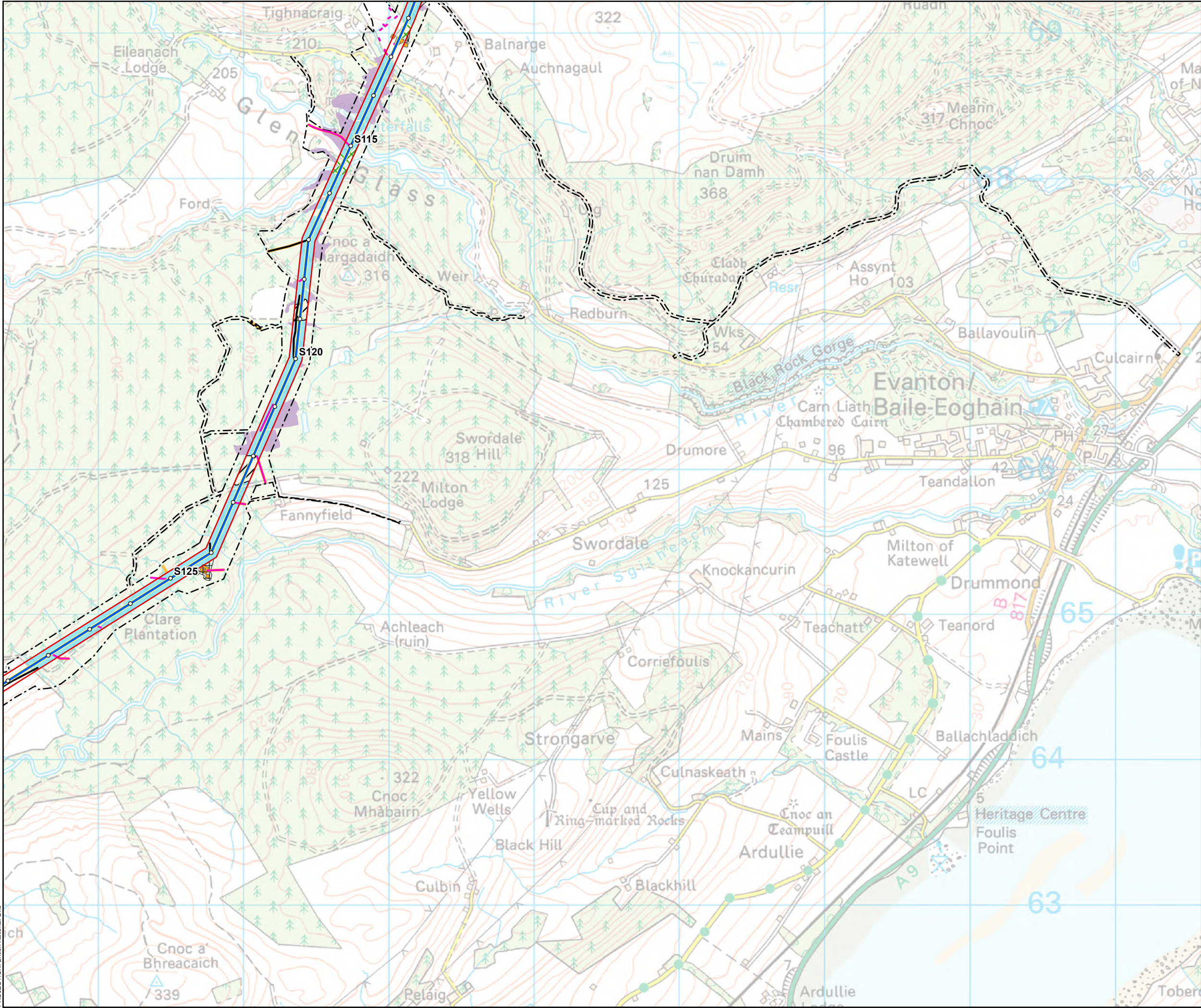


SCALE: See Scale Bar	VERSION: A02
SIZE: A3	DRAWN: BW
PROJECT: 0720281	CHECKED: BM
DATE: 07/08/2025	APPROVED: KG

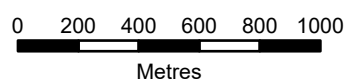
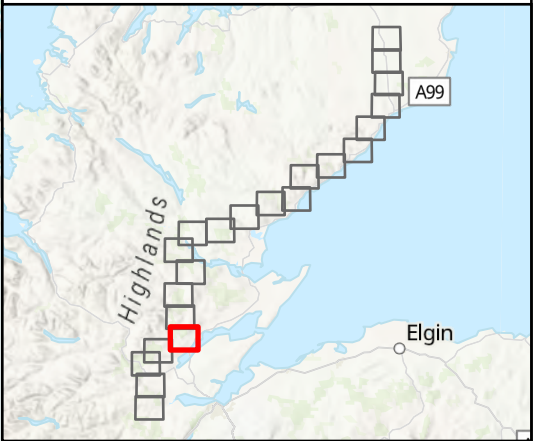
**Figure 13.1 - 17**  
**Spittal - Loch Buidhe - Beauly 400 kV OHL Connection**  
**Proposed Development Felling Plan**







- Tower Location
- Alignment Section D
- - - Limit of Deviation (LoD)
- Temporary Access Track - Cut/Fill
- - - Temporary Access Track - Trackway Panels
- Permanent Access Track - Cut/Fill
- - - Permanent Access Track - Floating
- 90 m Operational Corridor
- Equipotential Zone (EPZ) (Pulling Position)
- EPZ Buffer
- 20 m Access Corridor
- Conifer Woodland within Operational Corridor and Special Arrangements Buffer (90m)
- Broadleaved Woodland within Operational Corridor and Special Arrangements Buffer (90m)
- Felled Woodland within Operational Corridor
- Management Felling

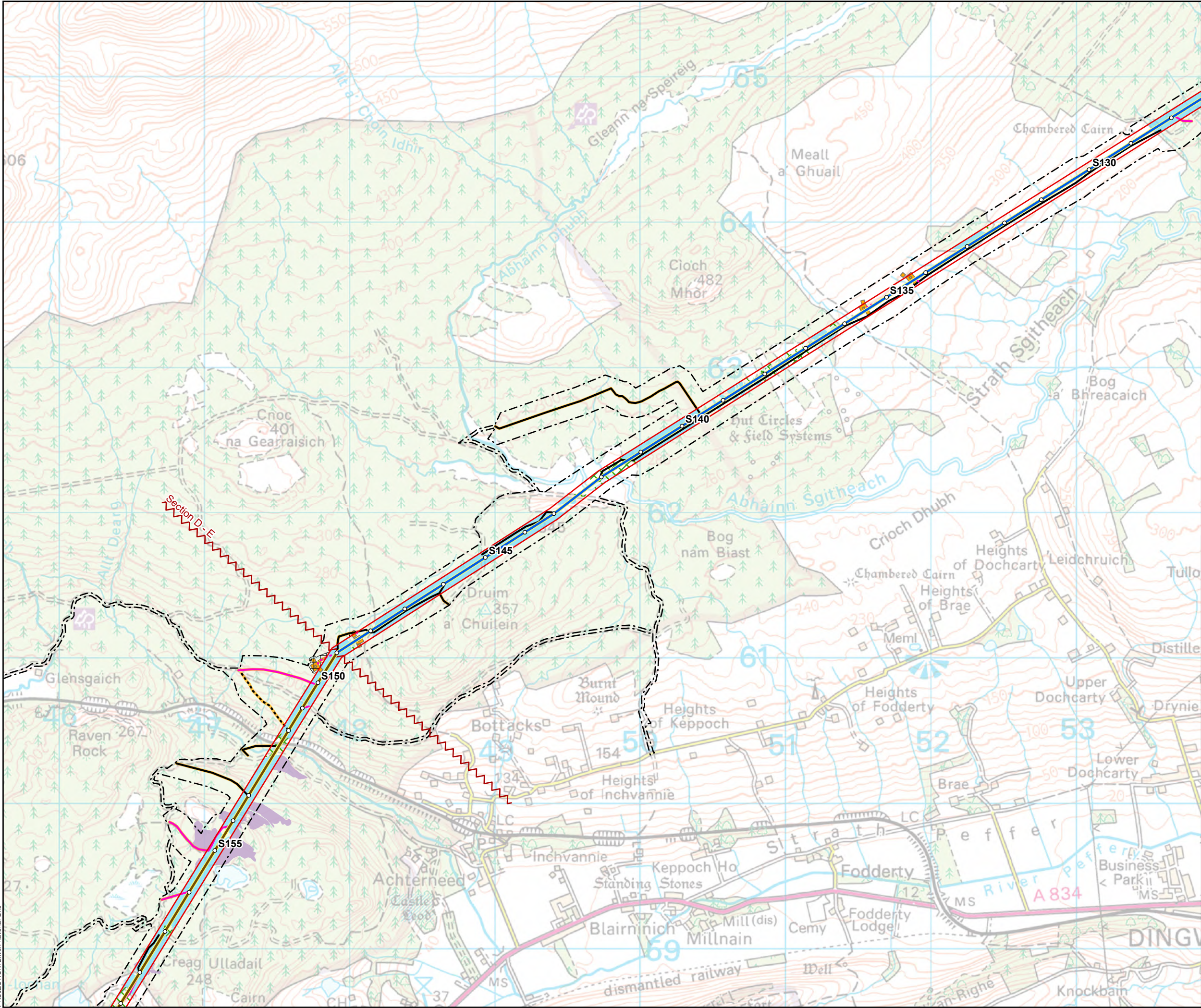


SCALE: See Scale Bar	VERSION: A02
SIZE: A3	DRAWN: BW
PROJECT: 0720281	CHECKED: BM
DATE: 07/08/2025	APPROVED: KG

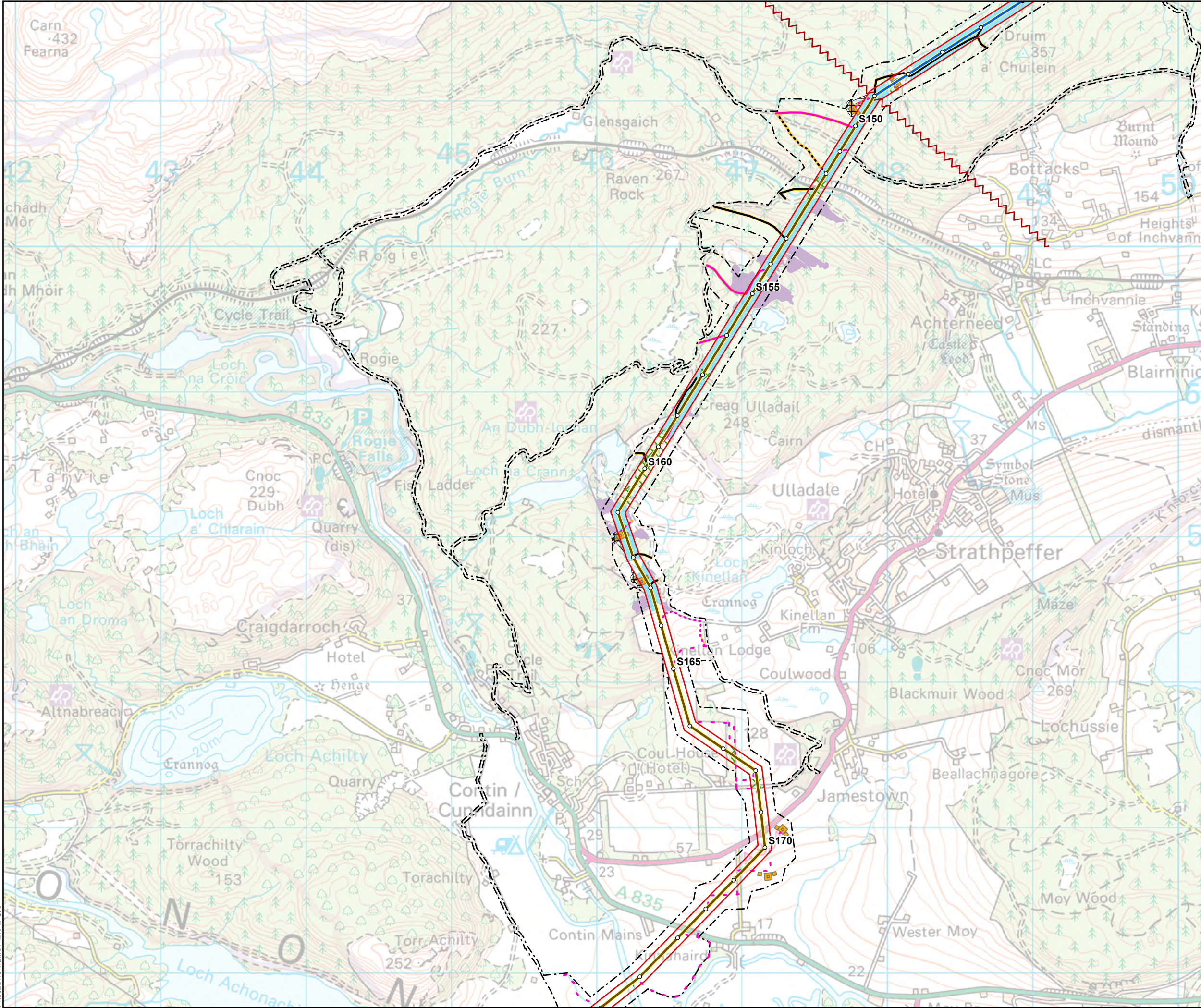
**Figure 13.1 - 18**  
**Spittal - Loch Buidhe - Beaulieu 400 kV OHL**  
**Connection**  
**Proposed Development Felling Plan**



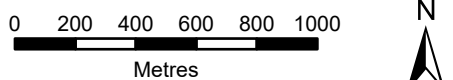
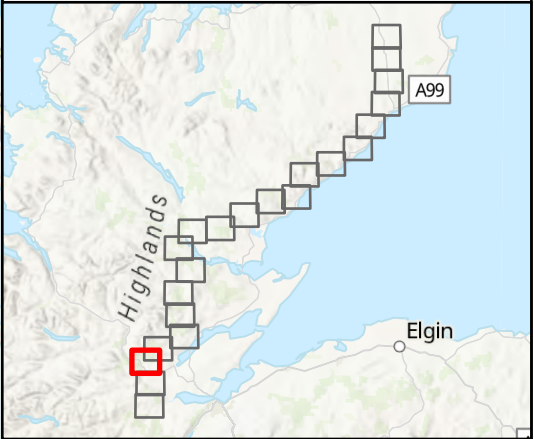








- Tower Location
- Alignment Section D
- Alignment Section E
- - - Limit of Deviation (LoD)
- Temporary Access Track - Cut/Fill
- ... Temporary Access Track - Floating
- - - Temporary Access Track - Trackway Panels
- Permanent Access Track - Cut/Fill
- ... Permanent Access Track - Floating
- ~ Alignment Section Break
- 90 m Operational Corridor
- Equipotential Zone (EPZ) (Pulling Position)
- EPZ Buffer
- 20 m Access Corridor
- Conifer Woodland within Operational Corridor and Special Arrangements Buffer (90m)
- Broadleaved Woodland within Operational Corridor and Special Arrangements Buffer (90m)
- Management Felling

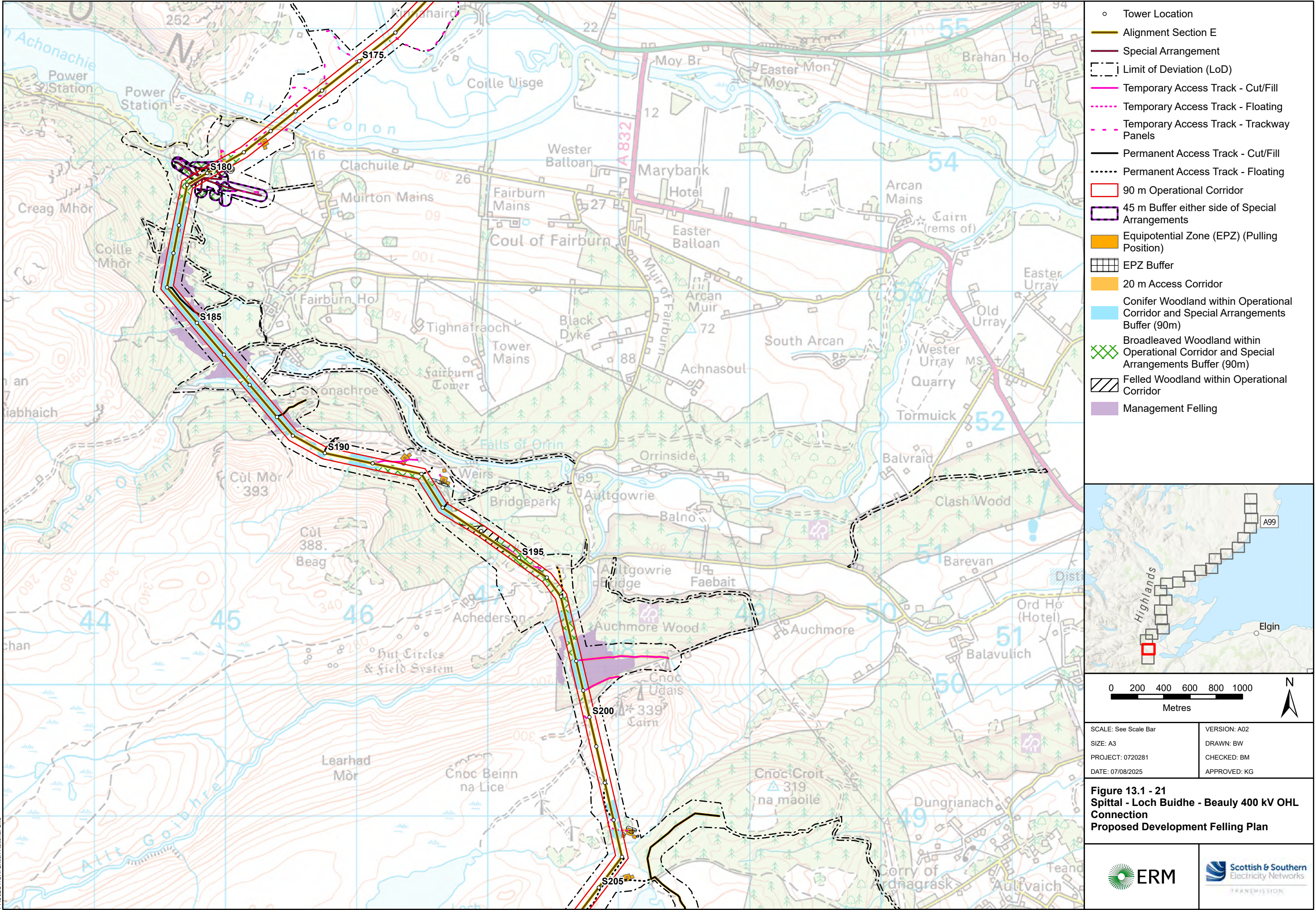


SCALE: See Scale Bar	VERSION: A02
SIZE: A3	DRAWN: BW
PROJECT: 0720281	CHECKED: BM
DATE: 07/08/2025	APPROVED: KG

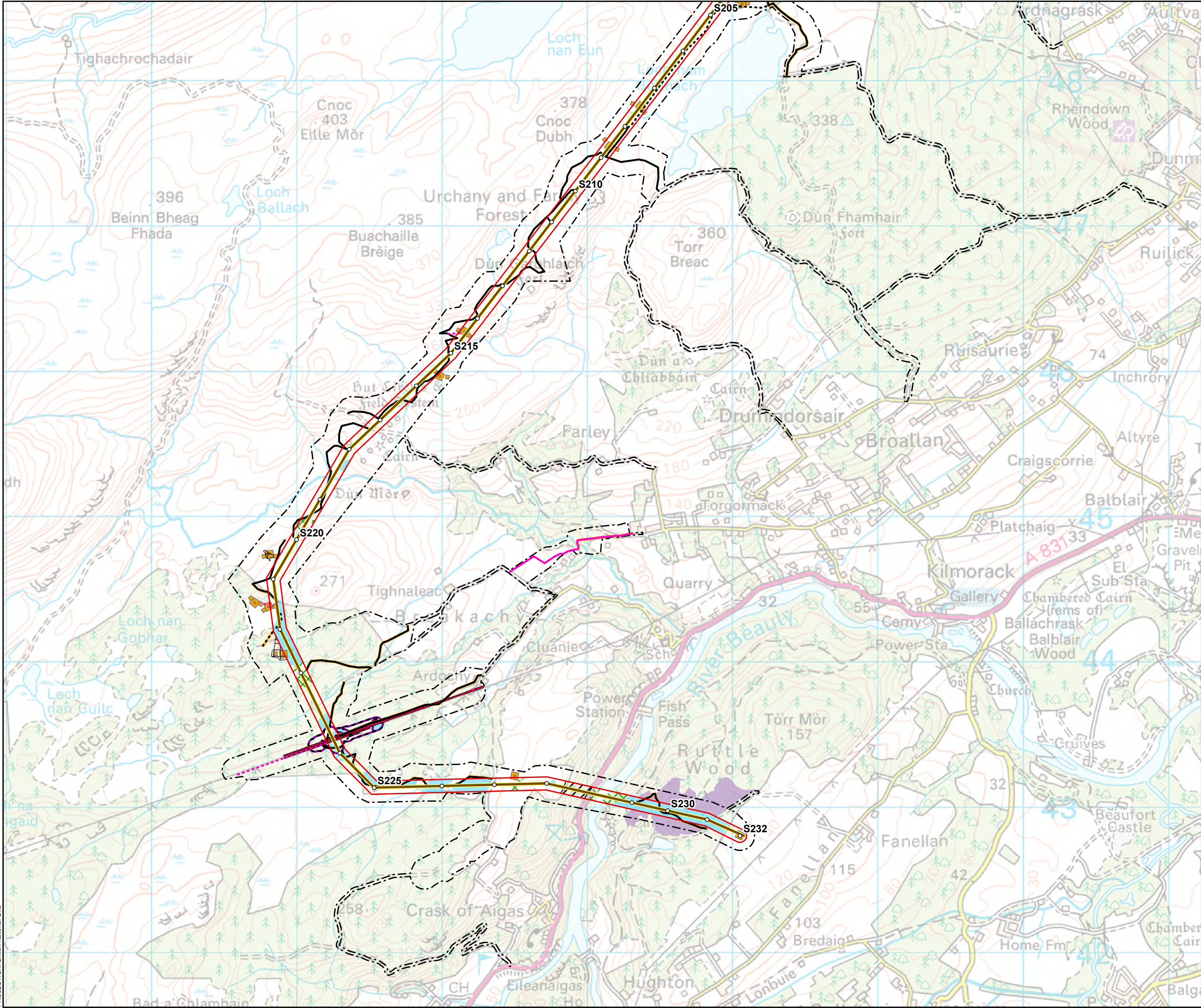
**Figure 13.1 - 20**  
**Spittal - Loch Buidhe - Beaulay 400 kV OHL**  
**Connection**  
**Proposed Development Felling Plan**



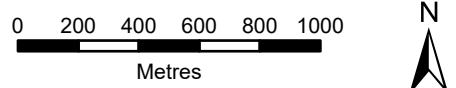
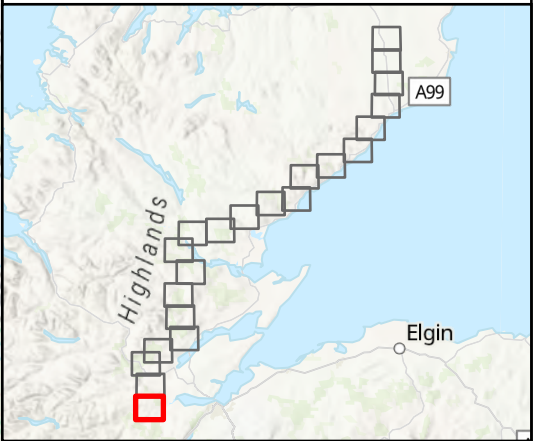








- Tower Location
- Alignment Section E
- Special Arrangement
- - - Limit of Deviation (LoD)
- Temporary Access Track - Cut/Fill
- ... Temporary Access Track - Floating
- Permanent Access Track - Cut/Fill
- ... Permanent Access Track - Floating
- 90 m Operational Corridor
- 45 m Buffer either side of Special Arrangements
- Equipotential Zone (EPZ) (Pulling Position)
- EPZ Buffer
- 20 m Access Corridor
- Conifer Woodland within Operational Corridor and Special Arrangements Buffer (90m)
- Broadleaved Woodland within Operational Corridor and Special Arrangements Buffer (90m)
- Felled Woodland within Operational Corridor
- Management Felling



SCALE: See Scale Bar	VERSION: A02
SIZE: A3	DRAWN: BW
PROJECT: 0720281	CHECKED: BM
DATE: 07/08/2025	APPROVED: KG

**Figure 13.1 - 22**  
**Spittal - Loch Buidhe - Beaulay 400 kV OHL**  
**Connection**  
**Proposed Development Felling Plan**

