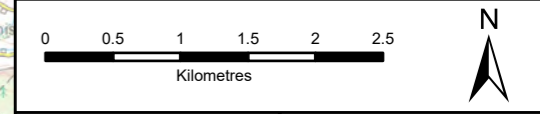
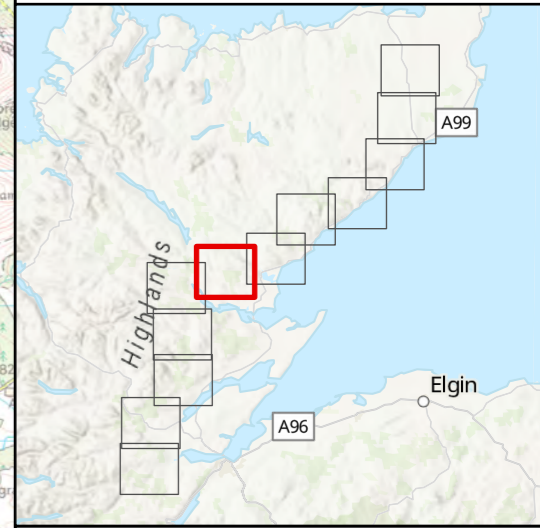


- Tower Location
- Alignment Section
  - Alignment Section B
  - Alignment Section C
- - - Study Area (500m buffer from LoD)
- Noise Sensitive Receptors



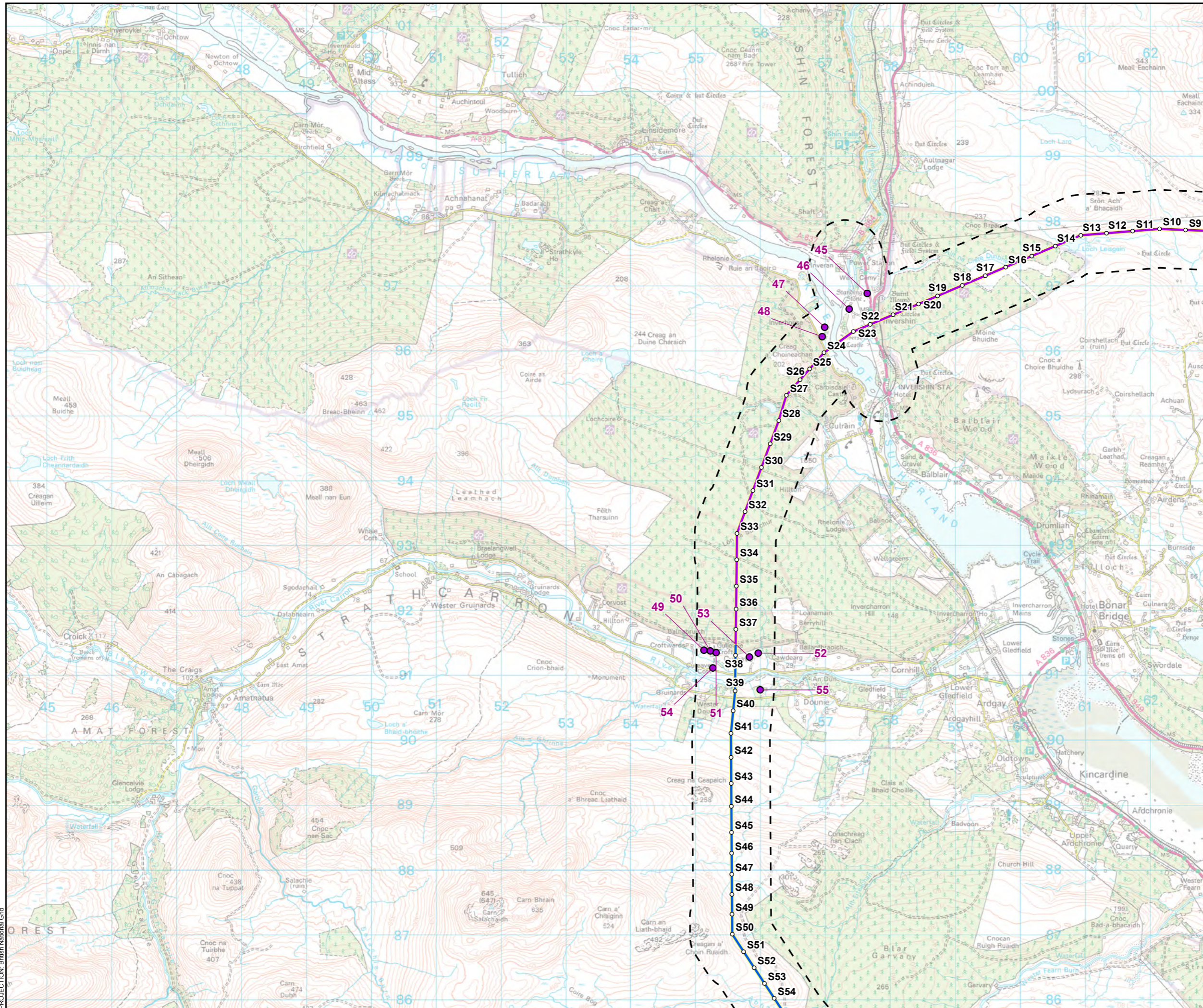
SCALE: See Scale Bar	VERSION: A01
SIZE: A3	DRAWN: CI
PROJECT: 0652629	CHECKED: ES
DATE: 8/12/2025	APPROVED: KG

**Figure 15.1 - 7**  
**Spittal - Loch Buidhe - Beaulieu**  
**400 kV OHL Connection**  
**Noise Sensitive Receptors**

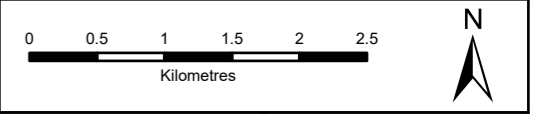
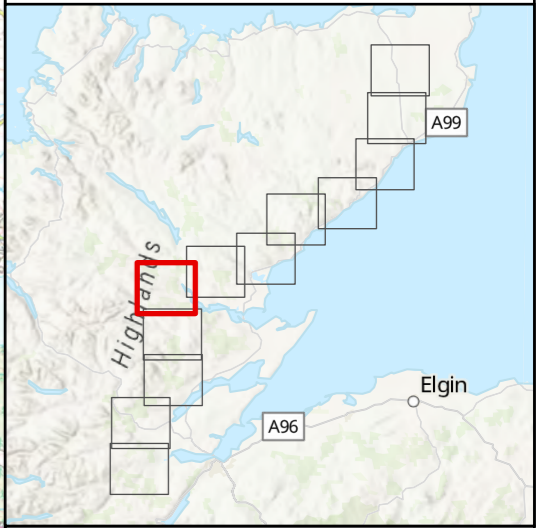



PROJECTION: British National Grid





- Tower Location
- Alignment Section
  - Alignment Section C
  - Alignment Section D
- - - Study Area (500m buffer from LoD)
- Noise Sensitive Receptors



SCALE: See Scale Bar	VERSION: A01
SIZE: A3	DRAWN: CI
PROJECT: 0652629	CHECKED: ES
DATE: 8/12/2025	APPROVED: KG

**Figure 15.1 - 8**  
**Spittal - Loch Buidhe - Beaulieu**  
**400 kV OHL Connection**  
**Noise Sensitive Receptors**

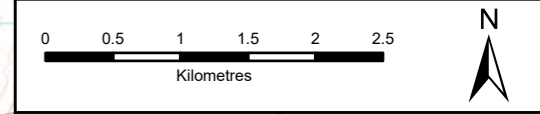
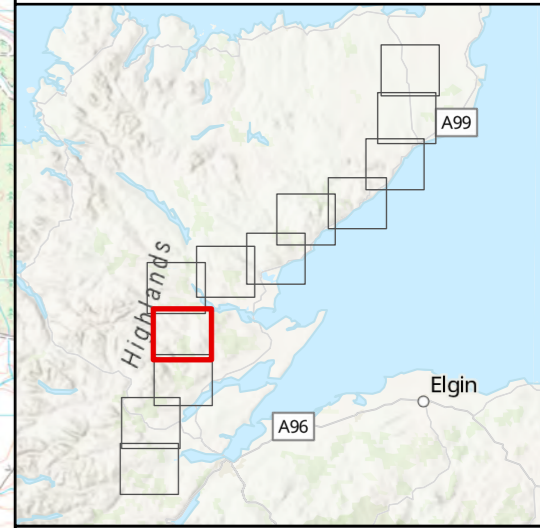


PROJECTION: British National Grid





- Tower Location
- Alignment Section D
- - - Study Area (500m buffer from LoD)
- Noise Sensitive Receptors

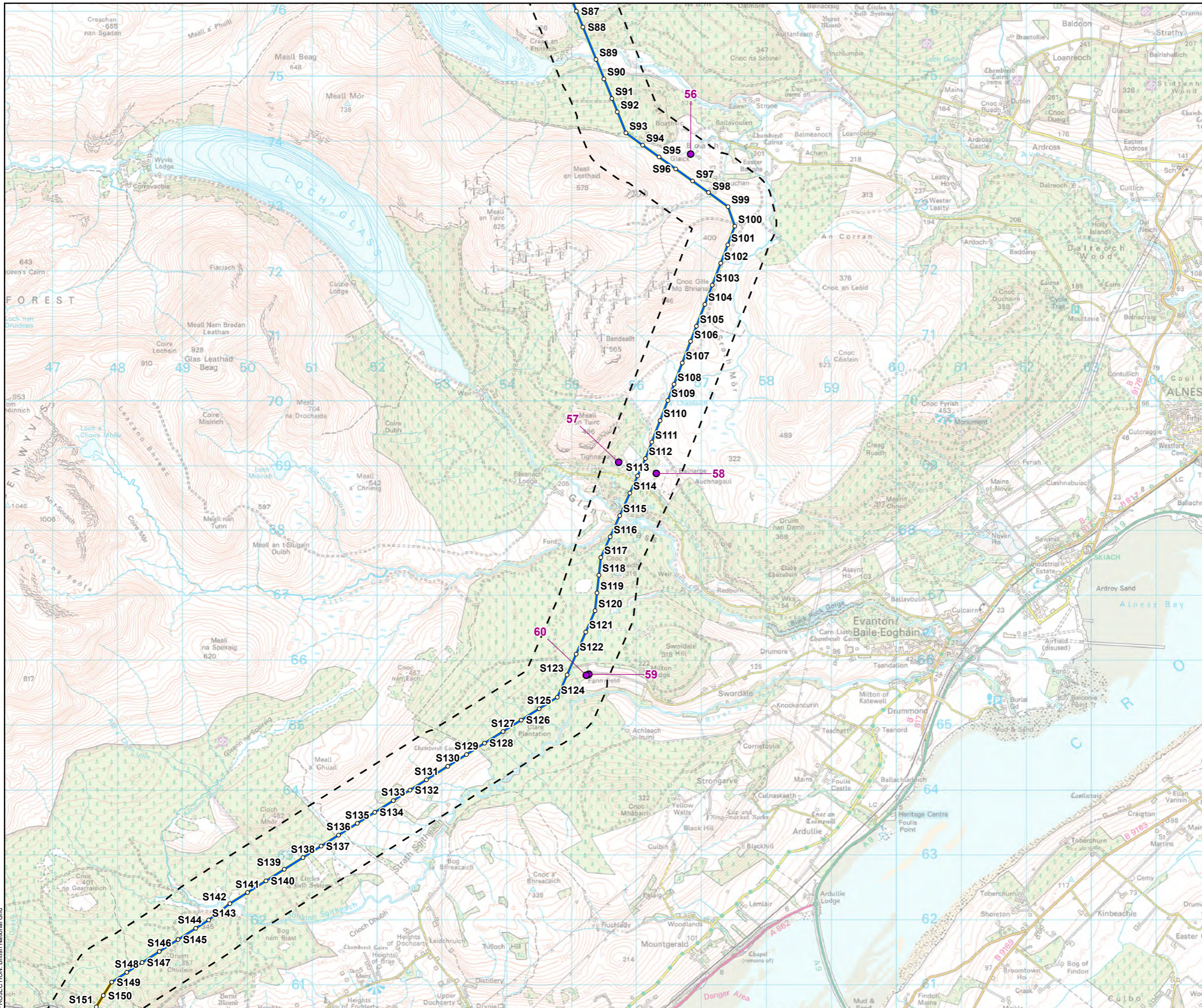


SCALE: See Scale Bar	VERSION: A01
SIZE: A3	DRAWN: CI
PROJECT: 0652629	CHECKED: ES
DATE: 8/12/2025	APPROVED: KG

**Figure 15.1 - 9**  
**Spittal - Loch Buidhe - Beaulieu**  
**400 kV OHL Connection**  
**Noise Sensitive Receptors**

PROJECTION: British National Grid





○ Tower Location

Alignment Section

— Alignment Section D

— Alignment Section E

- - - Study Area (500m buffer from LoD)

● Noise Sensitive Receptors

0 0.5 1 1.5 2 2.5  
Kilometres

SCALE: See Scale Bar  
VERSION: A01  
SIZE: A3  
PROJECT: 0652629  
DATE: 8/12/2025

DRAWN: CI  
CHECKED: ES  
APPROVED: KG

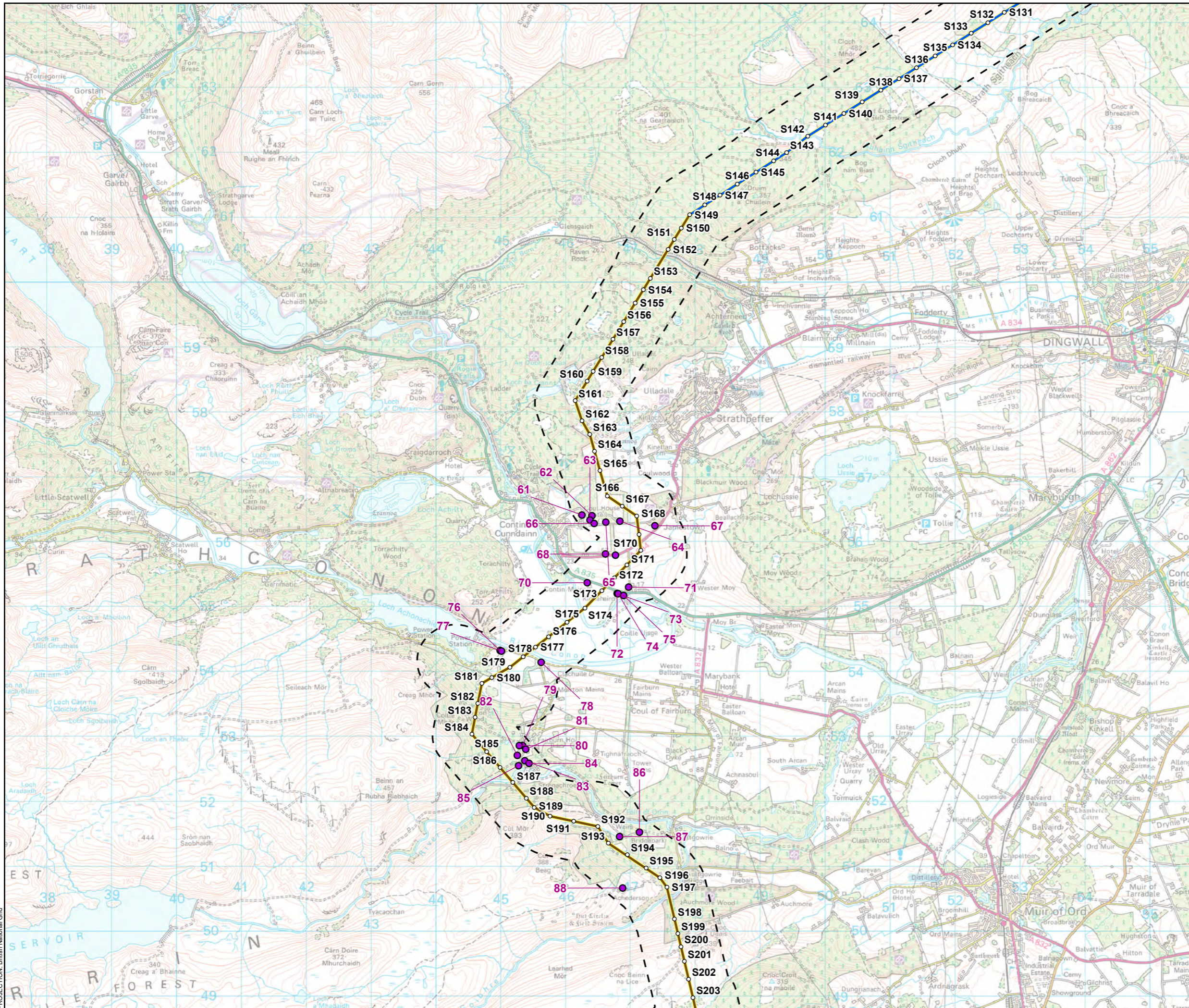
**Figure 15.1 - 10**  
**Spittal - Loch Buidhe - Beaulieu**  
**400 kV OHL Connection**  
**Noise Sensitive Receptors**

ERM

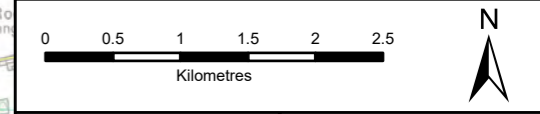
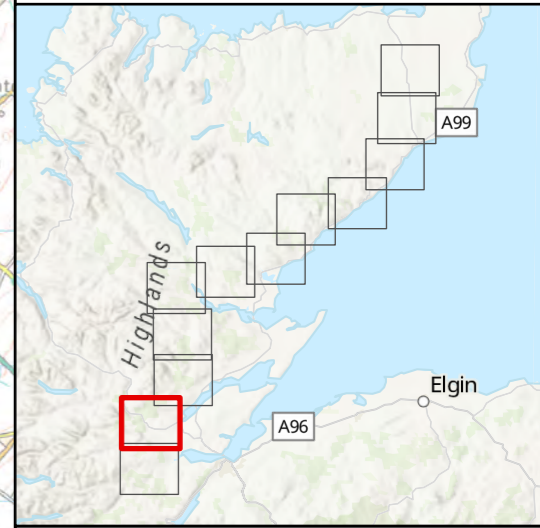
Scottish & Southern  
Electricity Networks  
TRANSMISSION

PROJECTION: British National Grid





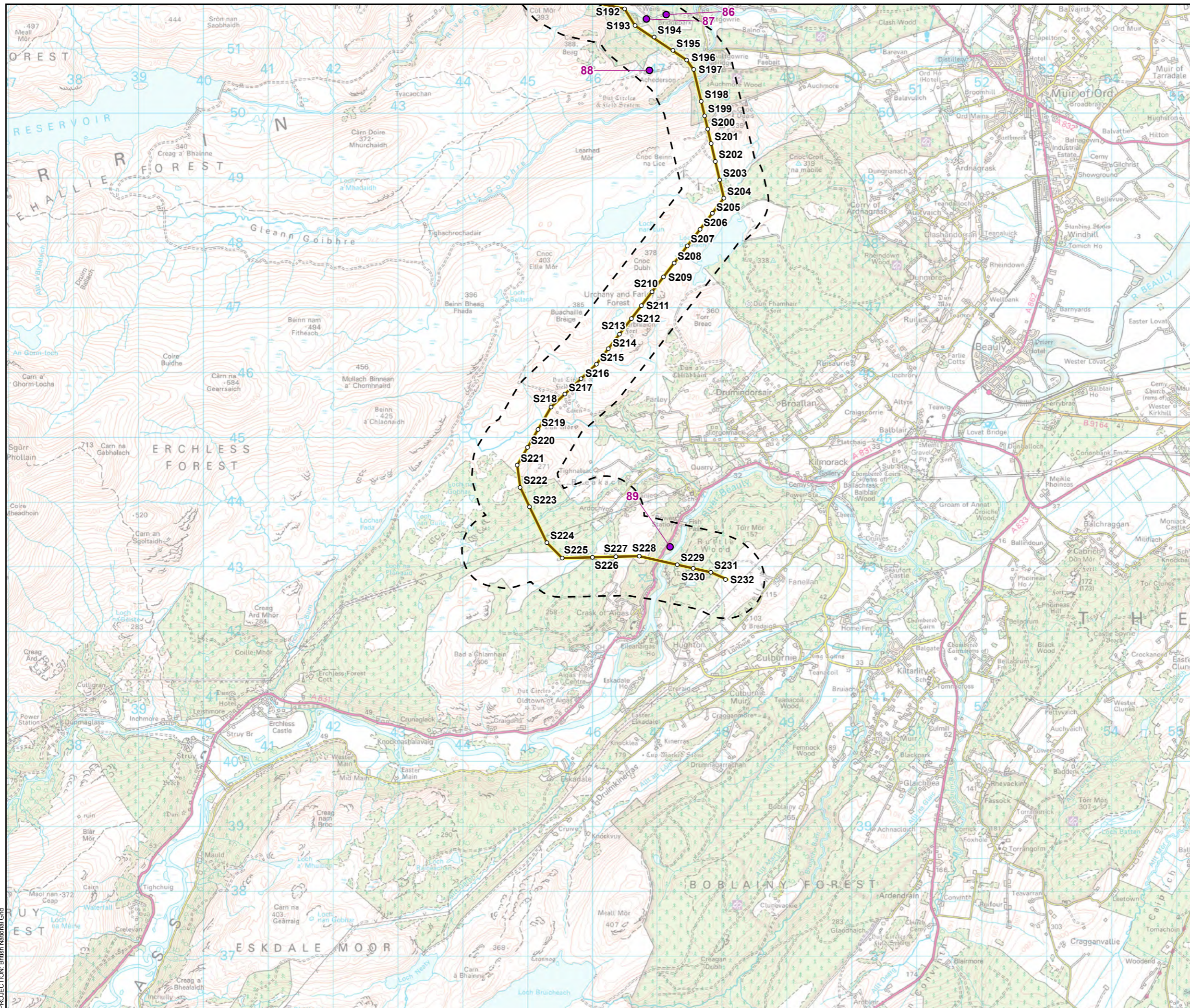
- Tower Location
- Alignment Section
  - Alignment Section D
  - Alignment Section E
- - - Study Area (500m buffer from LoD)
- Noise Sensitive Receptors



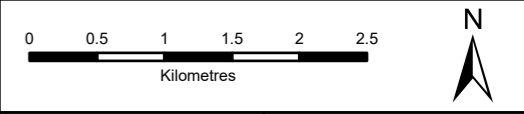
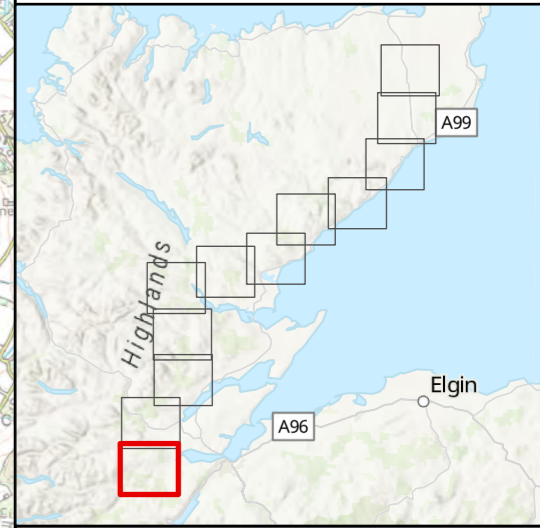
SCALE: See Scale Bar	VERSION: A01
SIZE: A3	DRAWN: CI
PROJECT: 0652629	CHECKED: ES
DATE: 8/12/2025	APPROVED: KG

**Figure 15.1 - 11**  
**Spittal - Loch Buidhe - Beaulieu**  
**400 kV OHL Connection**  
**Noise Sensitive Receptors**





- Tower Location
- Alignment Section
- Study Area (500m buffer from LoD)
- Noise Sensitive Receptors



SCALE: See Scale Bar	VERSION: A01
SIZE: A3	DRAWN: CI
PROJECT: 0652629	CHECKED: ES
DATE: 8/12/2025	APPROVED: KG

**Figure 15.1 - 12**  
**Spittal - Loch Buidhe - Beaulieu**  
**400 kV OHL Connection**  
**Noise Sensitive Receptors**

PROJECTION: British National Grid