



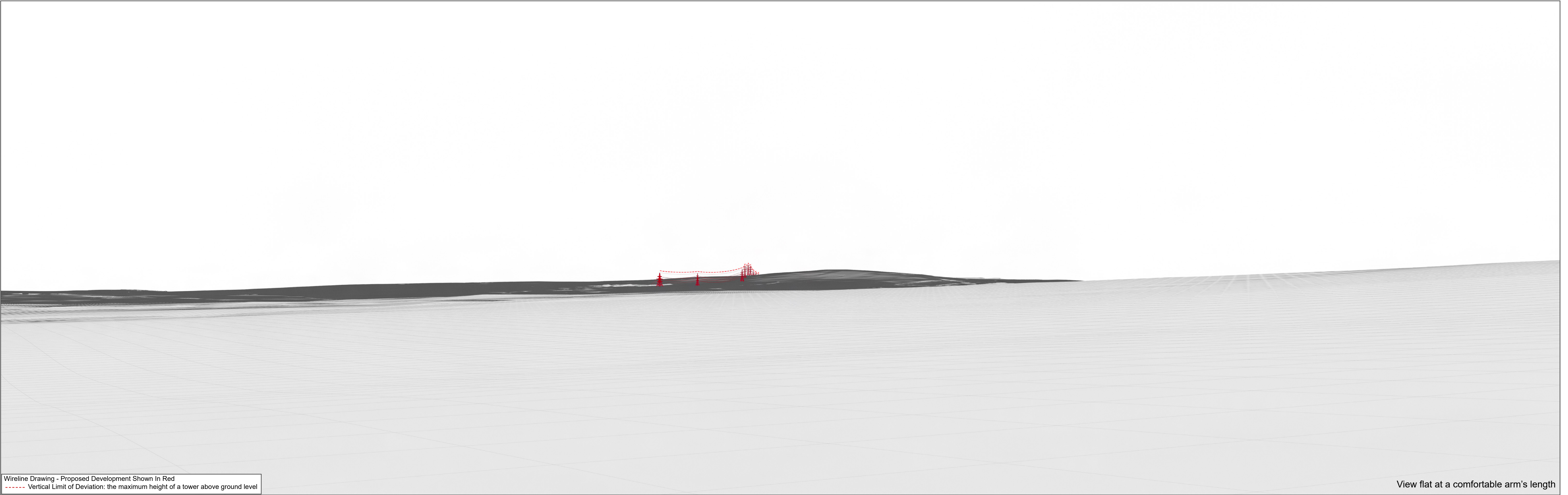
Baseline Photograph

This image provides landscape and visual context only



Wireline Drawing - Proposed Development Shown In Red  
----- Vertical Limit of Deviation: the maximum height of a tower above ground level





Wireline Drawing - Proposed Development Shown In Red  
----- Vertical Limit of Deviation: the maximum height of a tower above ground level

View flat at a comfortable arm's length





Photomontage

View flat at a comfortable arm's length

OS reference:	310066 959507	Horizontal field of view:	53.5° (planar projection)	Camera:	Canon EOS R5
Eye Level:	51m AOD	Principal distance:	812.5mm	Lens:	50mm (Canon AF 50mm f/1.2)
Direction of view:	132°	Paper size:	841 x 297 mm	Camera height:	1.5m AGL
Distance to Development:	6.2 km	Correct printed image size:	820 x 260 mm	Date and time:	28/11/2024 15:15







Baseline Photograph

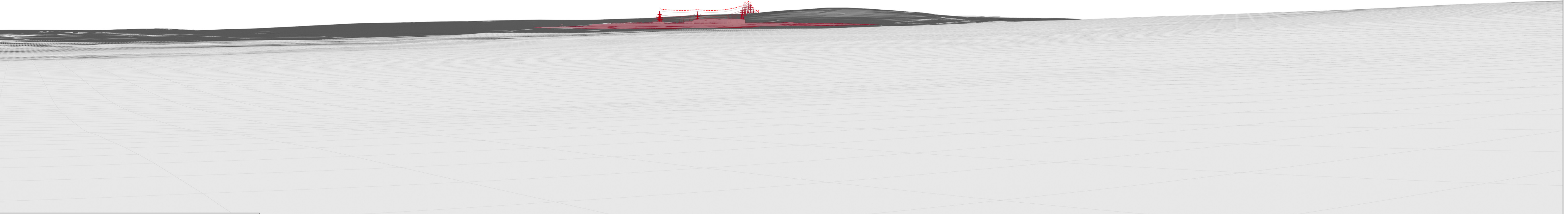
This image provides landscape and visual context only

Wireline - Showing Proposed Substation Development



Wireline Drawing - Proposed Development Shown In Red  
----- Vertical Limit of Deviation: the maximum height of a tower above ground level





Wireline Drawing - Proposed Development Shown In Red  
----- Vertical Limit of Deviation: the maximum height of a tower above ground level

View flat at a comfortable arm's length





Photomontage Showing Proposed Substation Development

View flat at a comfortable arm's length

OS reference:	310066 959507	Horizontal field of view:	53.5° (planar projection)	Camera:	Canon EOS R5
Eye Level:	51m AOD	Principal distance:	812.5mm	Lens:	50mm (Canon AF 50mm f/1.2)
Direction of view:	132°	Paper size:	841 x 297 mm	Camera height:	1.5m AGL
Distance to Development:	6.2 km	Correct printed image size:	820 x 260 mm	Date and time:	28/11/2024 15:15