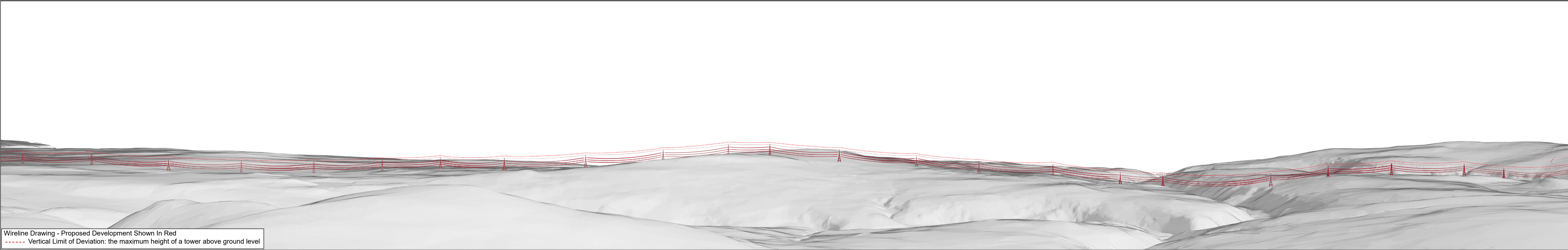


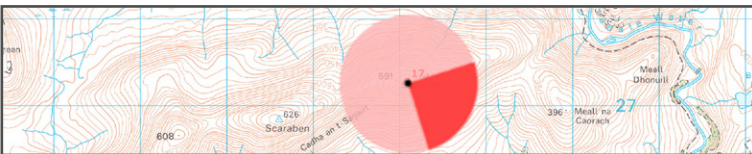


Baseline Photograph

This image provides landscape and visual context only



Wireline Drawing - Proposed Development Shown In Red
----- Vertical Limit of Deviation: the maximum height of a tower above ground level

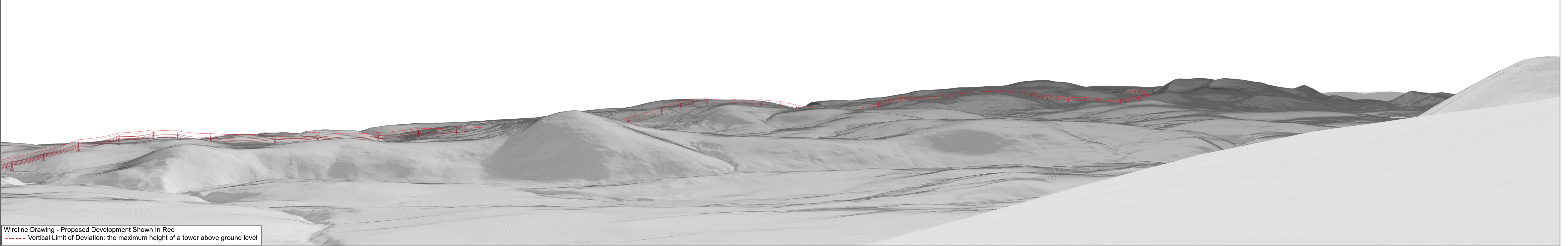


OS reference:	308088 927282	Horizontal field of view:	(90° cylindrical projection)	Camera:	Canon EOS R5
Eye Level:	585m AOD	Principal distance:	812.5mm	Lens:	50mm (Canon AF 50mm f/1.2)
Direction of view:	119°			Camera height:	1.5m AGL
Distance to Development:	4.575 km			Date and time:	28/11/2024 09:45



Baseline Photograph

This image provides landscape and visual context only



Wireline Drawing - Proposed Development Shown In Red
----- Vertical Limit of Deviation: the maximum height of a tower above ground level

V4a Figure 7-17a(ii)
Viewpoint 17: East Scaraben
Beauly to Spittal OHL

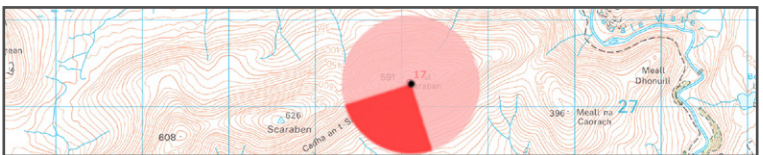


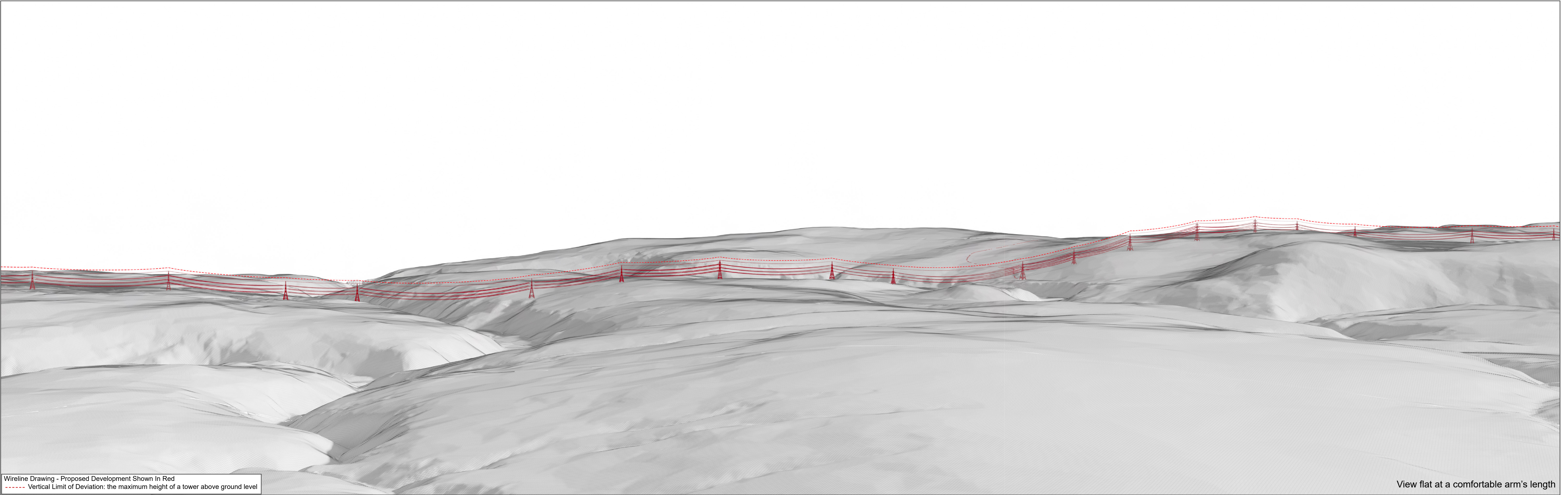
OS reference: 308088 927282
Eye Level: 585m AOD
Direction of view: 209°
Distance to Development: 4.575 km

Horizontal field of view: (90° cylindrical projection)
Principal distance: 812.5mm

Camera:
Lens:
Camera height:
Date and time:

Canon EOS R5
50mm (Canon AF 50mm f/1.2)
1.5m AGL
28/11/2024 09:45





Wireline Drawing - Proposed Development Shown In Red
----- Vertical Limit of Deviation: the maximum height of a tower above ground level

View flat at a comfortable arm's length



Photomontage

View flat at a comfortable arm's length

OS reference:	308088 927282	Horizontal field of view:	53.5° (planar projection)	Camera:	Canon EOS R5
Eye Level:	585m AOD	Principal distance:	812.5mm	Lens:	50mm (Canon AF 50mm f/1.2)
Direction of view:	165°	Paper size:	841 x 297 mm	Camera height:	1.5m AGL
Distance to Development:	4.575 km	Correct printed image size:	820 x 260 mm	Date and time:	28/11/2024 09:45