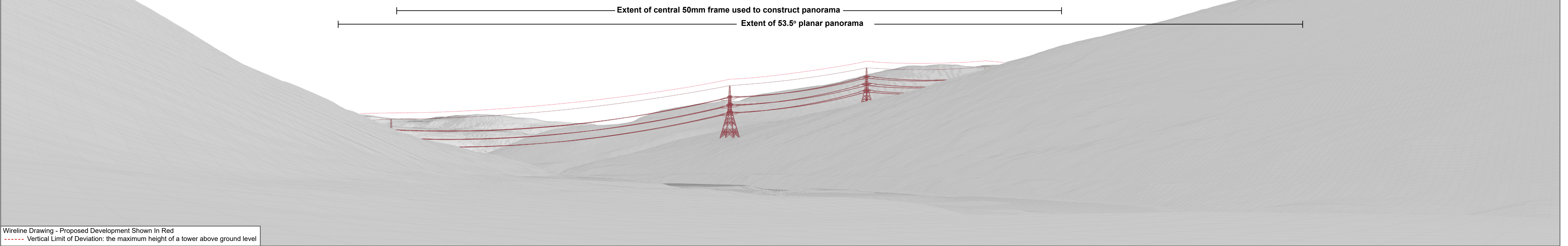




Baseline Photograph

This image provides landscape and visual context only



Wireline Drawing - Proposed Development Shown In Red
----- Vertical Limit of Deviation: the maximum height of a tower above ground level

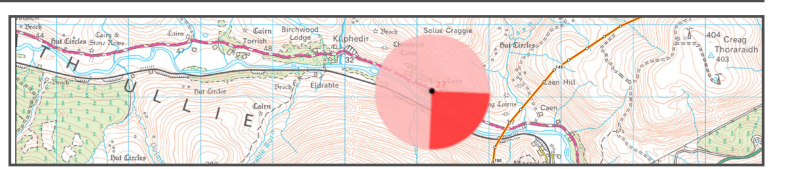
V4a Figure 7-27a
Viewpoint 27: A897 (East of Kilphedir)
Beauly to Spittal OHL

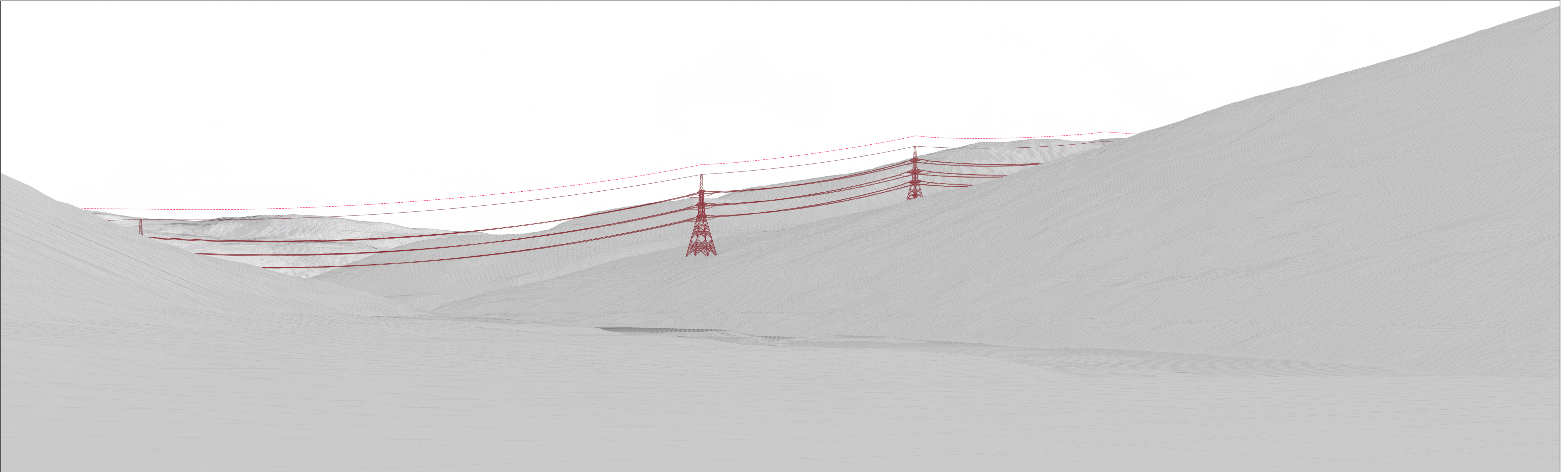


OS reference: 300210 918087
Eye Level: 19m AOD
Direction of view: 139°
Distance to Development: 1.15 km

Horizontal field of view: (90° cylindrical projection)
Principal distance: 812.5mm

Camera: Canon EOS R5
Lens: 50mm (Canon AF 50mm f/1.2)
Camera height: 1.5m AGL
Date and time: 30/11/2024 15:15





Wireline Drawing - Proposed Development Shown In Red
----- Vertical Limit of Deviation: the maximum height of a tower above ground level

View flat at a comfortable arm's length

V4a Figure 7-27b
Viewpoint 27: A897 (East of Kilphedir)
Beauly to Spittal OHL



OS reference: 300210 918087
Eye Level: 19m AOD
Direction of view: 139°
Distance to Development: 1.15 km

Horizontal field of view: 53.5° (planar projection)
Principal distance: 812.5mm
Paper size: 841 x 297 mm
Correct printed image size: 820 x 260 mm

Camera: Canon EOS R5
Lens: 50mm (Canon AF 50mm f/1.2)
Camera height: 1.5m AGL
Date and time: 30/11/2024 15:15



Photomontage

View flat at a comfortable arm's length

OS reference:	300210 918087	Horizontal field of view:	53.5° (planar projection)	Camera:	Canon EOS R5
Eye Level:	19m AOD	Principal distance:	812.5mm	Lens:	50mm (Canon AF 50mm f/1.2)
Direction of view:	139°	Paper size:	841 x 297 mm	Camera height:	1.5m AGL
Distance to Development:	1.15 km	Correct printed image size:	820 x 260 mm	Date and time:	30/11/2024 15:15