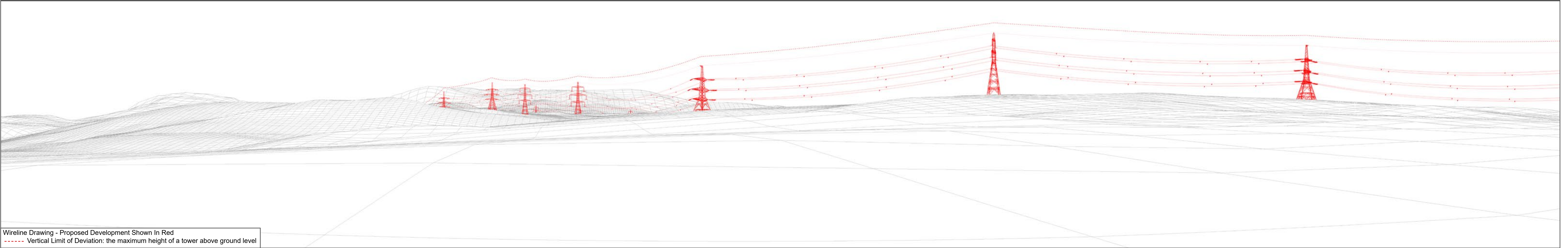


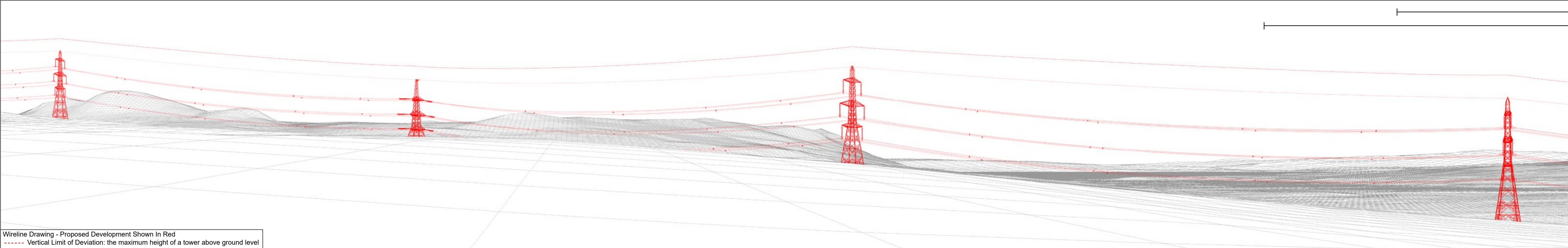


Baseline Photograph

This image provides landscape and visual context only



Wireline Drawing - Proposed Development Shown In Red
----- Vertical Limit of Deviation: the maximum height of a tower above ground level



Wireline Drawing - Proposed Development Shown In Red
----- Vertical Limit of Deviation: the maximum height of a tower above ground level



OS reference: 246513 855758
Eye Level: 52m AOD
Direction of view: 95°
Distance to Development: 0.4 km

Horizontal field of view: (90° cylindrical projection)
Principal distance: 812.5mm

Camera: Canon EOS R5
Lens: 50mm (Canon AF 50mm f/1.2)
Camera height: 1.5m AGL
Date and time: 26/09/2024 18:00

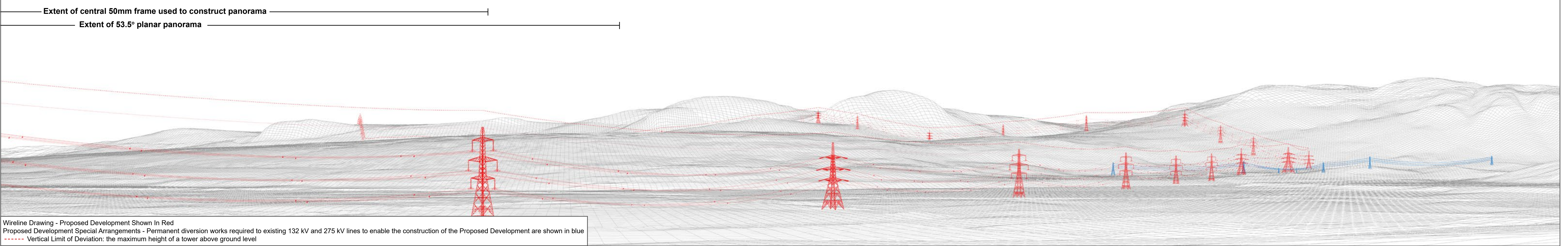


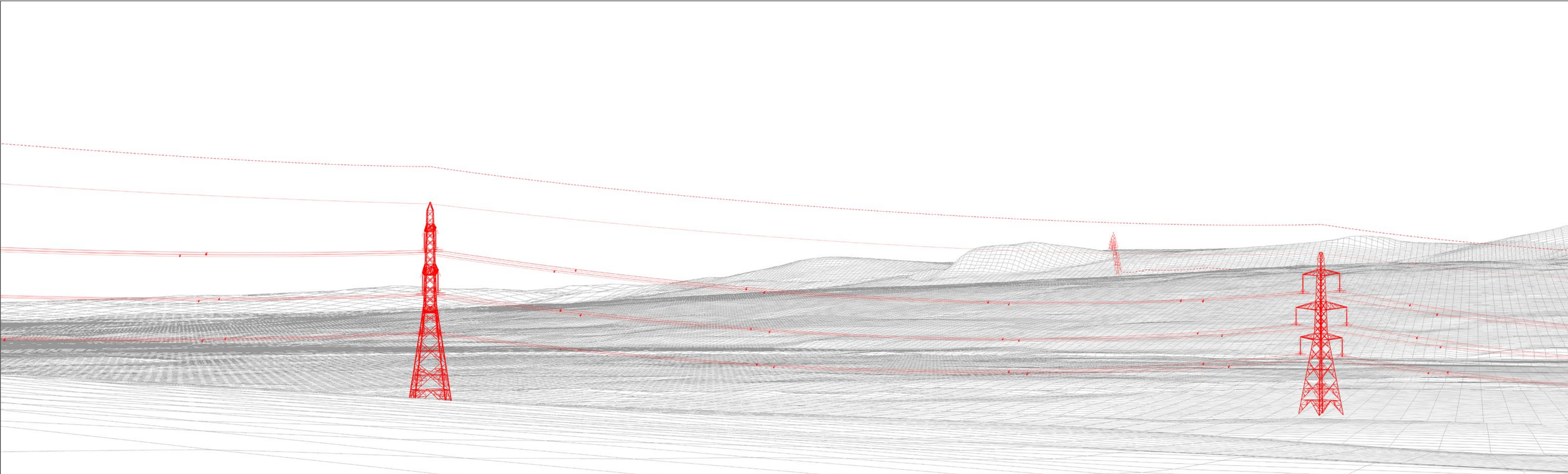
V4a Figure 7-80a(i)
Viewpoint 80: A834 (east of Contin)
Beauly to Spittal OHL



Baseline Photograph

This image provides landscape and visual context only





Wireline Drawing - Proposed Development Shown In Red
----- Vertical Limit of Deviation: the maximum height of a tower above ground level

View flat at a comfortable arm's length

OS reference:	246513 855758	Horizontal field of view:	53.5° (planar projection)	Camera:	Canon EOS R5
Eye Level:	52m AOD	Principal distance:	812.5mm	Lens:	50mm (Canon AF 50mm f/1.2)
Direction of view:	151°	Paper size:	841 x 297 mm	Camera height:	1.5m AGL
Distance to Development:	0.4 km	Correct printed image size:	820 x 260 mm	Date and time:	26/09/2024 18:00



Photomontage

View flat at a comfortable arm's length