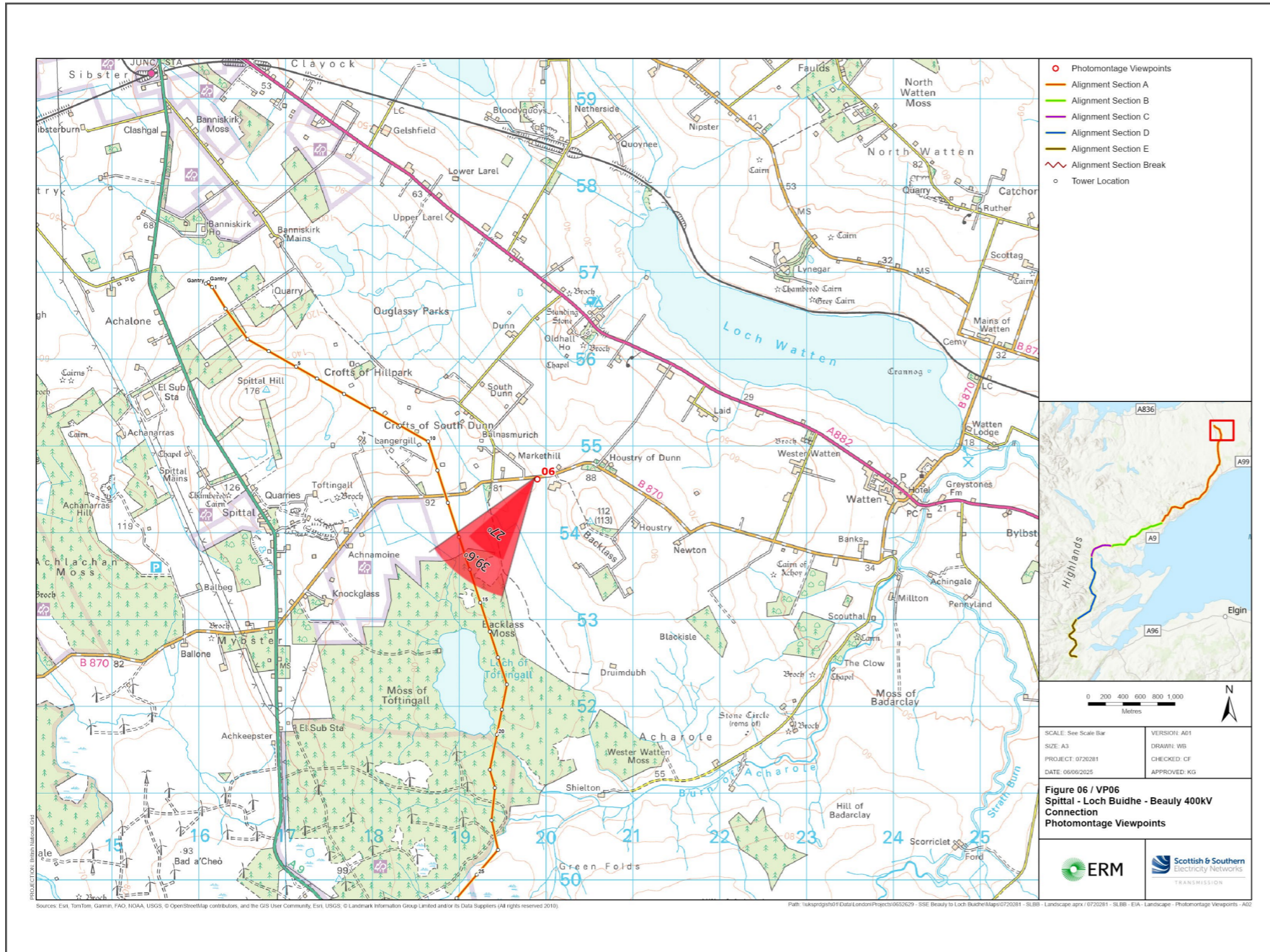


V4b Figure 7- 06a - Viewpoint 6: B870 (west of Houstry of Dunn)

Reproduced from Ordnance Survey digital map data © Crown copyright 2020. All rights reserved. Licence number 100048606



Grid Reference: 319903 954616      Distance to the development: 1285m      AOD: 91m      Direction of view: 215°

This viewpoint is on the B870 west of Houstry of Dun.

Travel north east from Halkirk on the B874 for approximately 2.5 km. Turn left onto the A9 at Roadside, and continue on the A9 for 8km. Turn left onto the B870. After 3km there is a dense block of trees on the left, and space to park just past the trees.

The camera location is on the right, near the gate, as shown in the adjacent photograph.



Extent of 50mm single frame image



Photomontage

**V4b Figure 7- 06b**  
**Viewpoint 6: B870 (west of Houstry of Dunn)**

Distance to the development: 1285m Camera: Canon EOS R5 Focal Length: 50mm vertical (27°) x 28mm horizontal (65.5°) Camera height: 1.5m Date: 03/10/2024 12:45

The images contained on this page and the following page are not representative of scale and distance from the actual viewpoint and show the development in its wider landscape context only.

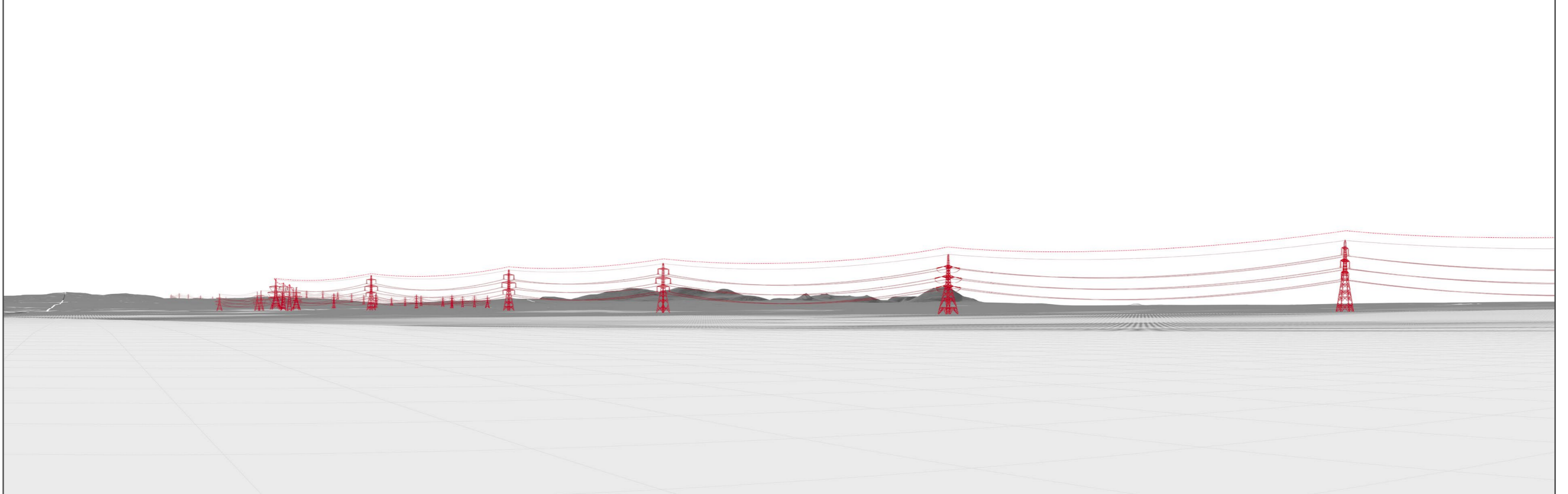
For empirical testing, the wireline image on the next page can be accurately assessed in the field when converted to a transparency. If viewed with one eye at a distance of 300mm from exactly the same location and height as the original camera lens, the image will fit the real landscape cues.





V4b Figure 7- 06c - Viewpoint 6: B870 (west of Houstry of Dunn) - Existing View

V4b Figure 7- 06d - Viewpoint 6: B870 (west of Houstry of Dunn) - Wireline Overlay

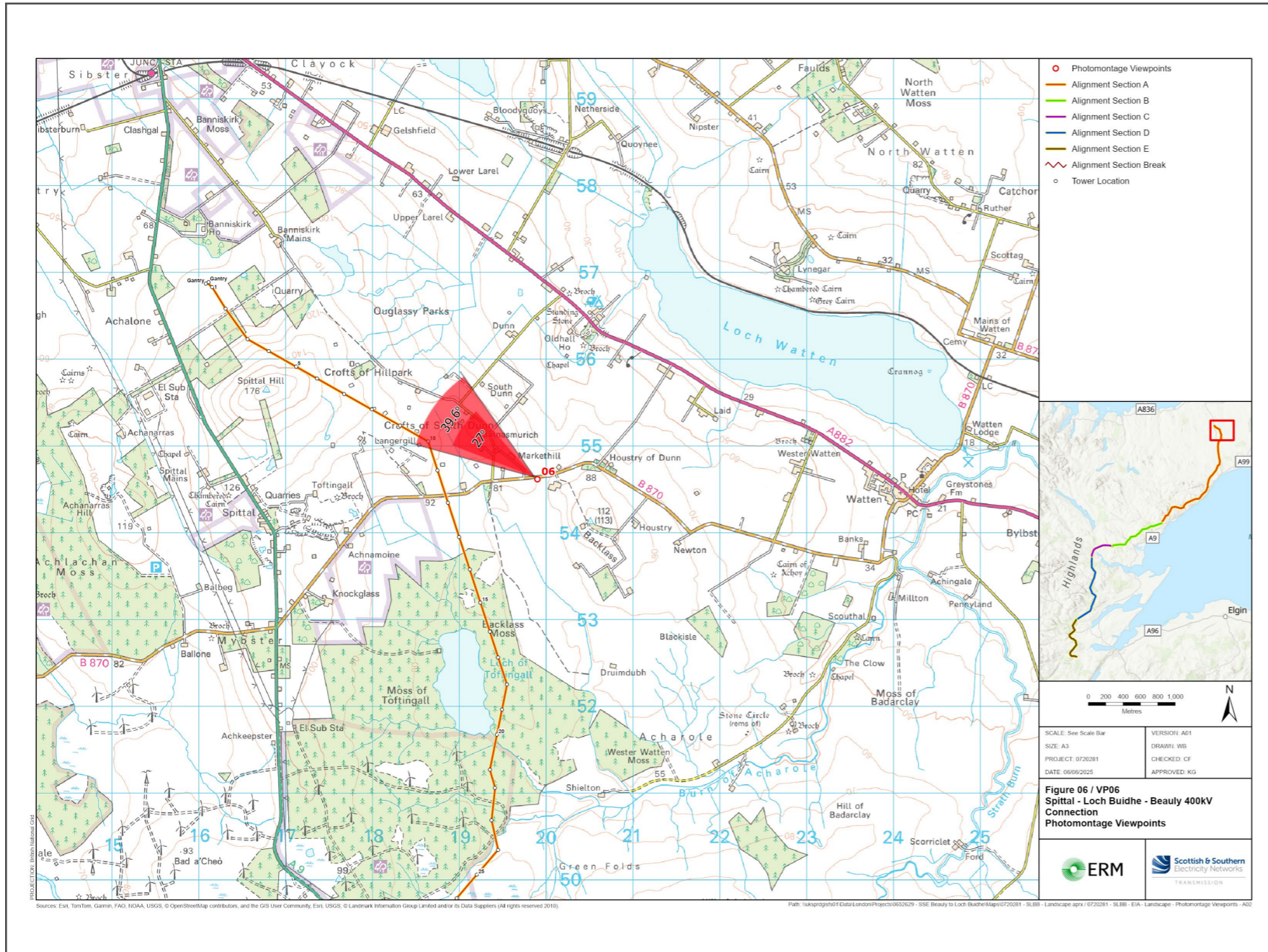


Wireline Drawing - Proposed Development Shown In Red  
----- Vertical Limit of Deviation: the maximum height of a tower above ground level



V4b Figure 7- 06a(i) - Viewpoint 6: B870 (west of Houstry of Dunn)

Reproduced from Ordnance Survey digital map data © Crown copyright 2020. All rights reserved. Licence number 100048606



Grid Reference: 319903 954616      Distance to the development: 1285m      AOD: 91m      Direction of view: 305°

This viewpoint is on the B870 west of Houstry of Dun.

Travel north east from Halkirk on the B874 for approximately 2.5 km. Turn left onto the A9 at Roadside, and continue on the A9 for 8km. Turn left onto the B870. After 3km there is a dense block of trees on the left, and space to park just past the trees.

The camera location is on the right, near the gate, as shown in the adjacent photograph.



Extent of 50mm single frame image



**V4b Figure 7- 06b(i)**  
**Viewpoint 6: B870 (west of Houstry of Dunn)**

Distance to the development: 1285m Camera: Canon EOS R5 Focal Length: 50mm vertical (27°) x 28mm horizontal (65.5°) Camera height: 1.5m Date: 03/10/2024 12:45

The images contained on this page and the following page are not representative of scale and distance from the actual viewpoint and show the development in its wider landscape context only.

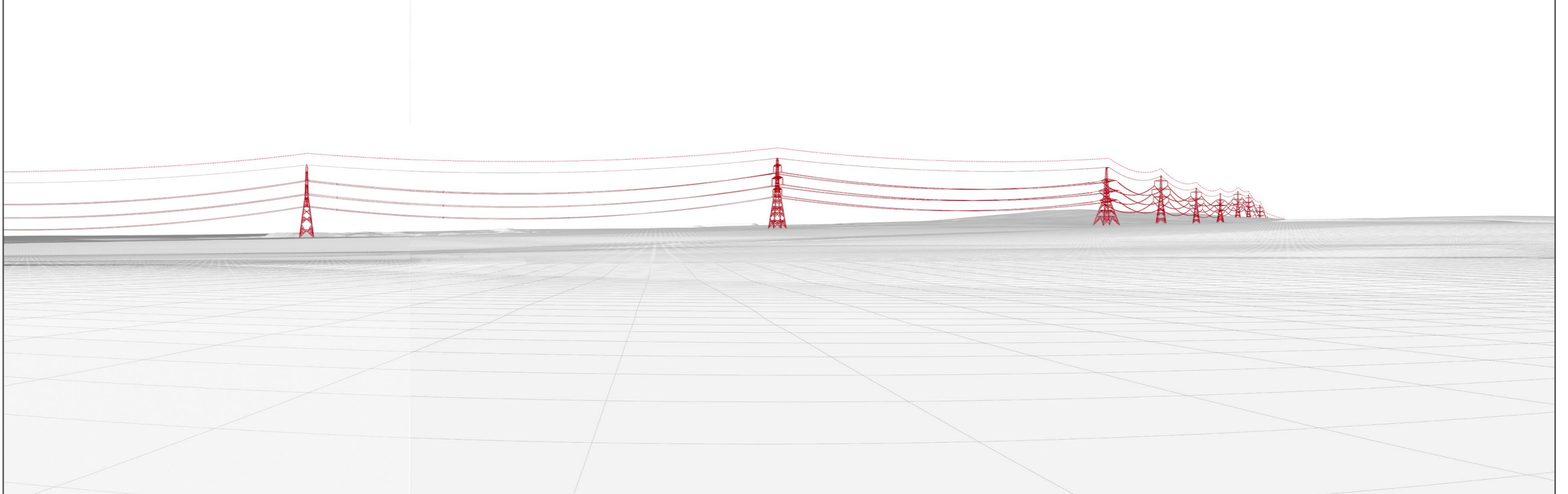
For empirical testing, the wireline image on the next page can be accurately assessed in the field when converted to a transparency. If viewed with one eye at a distance of 300mm from exactly the same location and height as the original camera lens, the image will fit the real landscape cues.





V4b Figure 7- 06c(i) - Viewpoint 6: B870 (west of Houstry of Dunn) - Existing View

V4b Figure 7- 06d(i) - Viewpoint 6: B870 (west of Houstry of Dunn) - Wireline Overlay



Wireline Drawing - Proposed Development Shown In Red  
----- Vertical Limit of Deviation: the maximum height of a tower above ground level





**V4b Figure 7- 06b(ii)**

**Viewpoint 6: B870 (west of Houstry of Dunn)**

This image should be viewed at a comfortable arms length (approx. 500mm)

Distance to the development: 1285m    Camera: Canon EOS R5    Focal Length: 50mm    Camera height: 1.5m    Date: 03/10/2024 12:45





**V4b Figure 7- 06b(iii)**

**Viewpoint 6: B870 (west of Houstry of Dunn)**

This image should be viewed at a comfortable arms length (approx. 500mm)

Distance to the development: 1285m    Camera: Canon EOS R5    Focal Length: 75mm    Camera height: 1.5m    Date: 03/10/2024 12:45