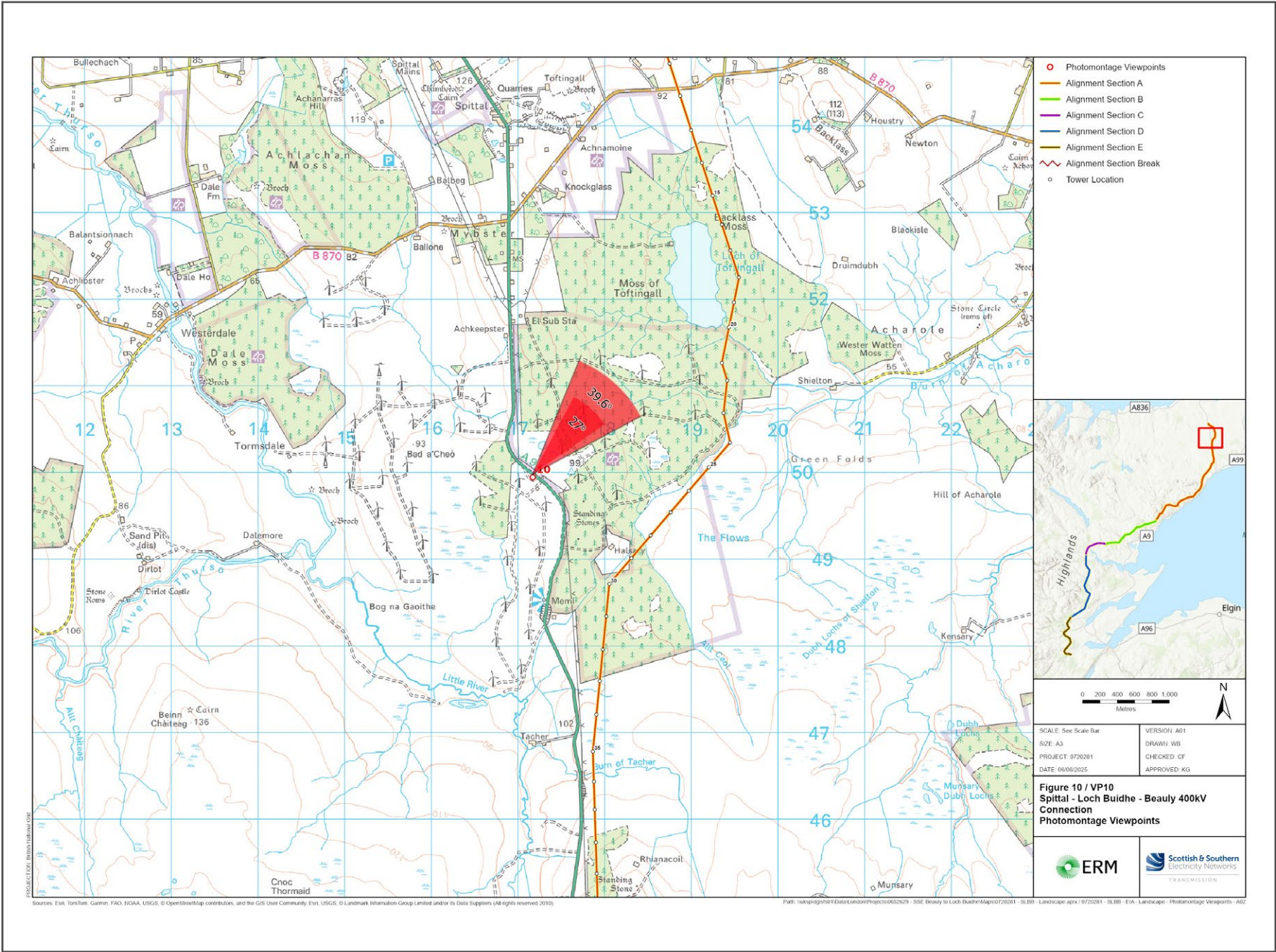


V4b Figure 7- 10a - Viewpoint 10: A9 (T) Lay-by (Bad a Cheo)



Grid Reference: 317173 949945 Distance to the development: 1230m AOD: 89m Direction of view: 37.5°

This viewpoint is on the A9, at Westerdale, about 10 km south of Halkirk.

Leave Halkirk travelling east on the B874. After 2.5 km turn right onto the A9, then in 0.7 km, turn right to stay on the A9. Continue for 10.5 km and turn into the car park on the right.



V4b Figure 7- 10b -
Viewpoint 10: A9 (T) Lay-by (Bad a Cheo)

Distance to the development: 1230m Camera: Canon EOS R5 Focal Length: 50mm vertical (27°) x 28mm horizontal (65.5°) Camera height: 1.5m Date: 28/11/2024 13:45

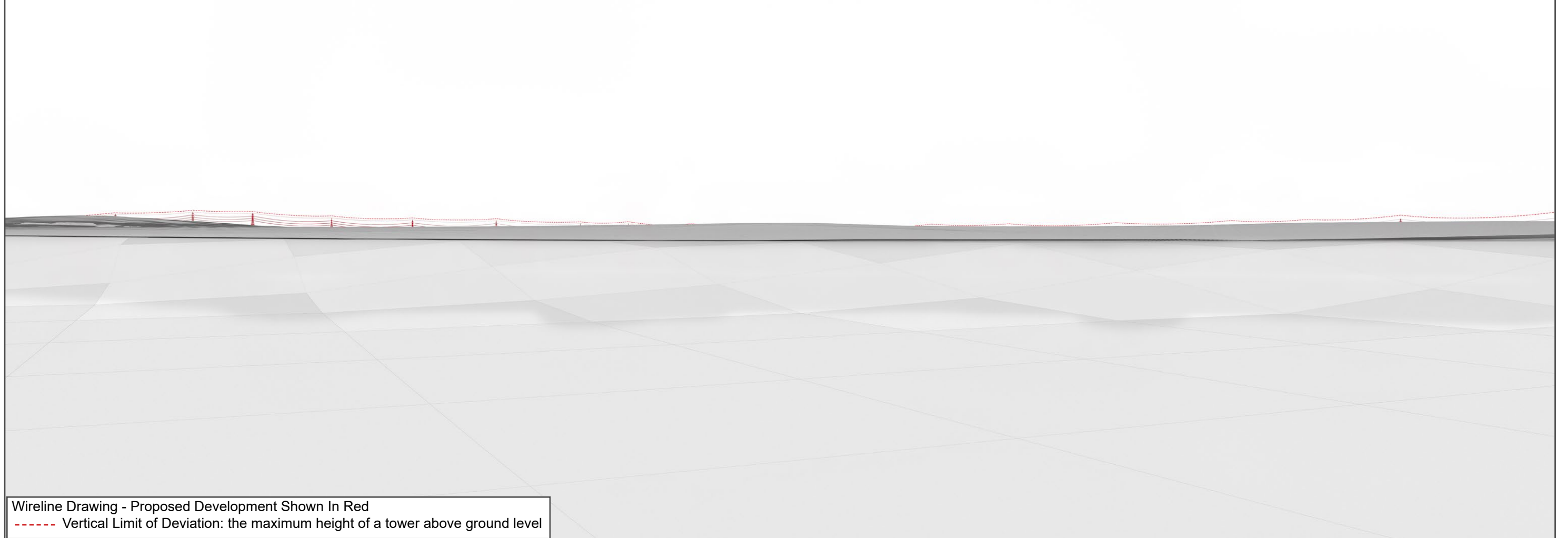
The images contained on this page and the following page are not representative of scale and distance from the actual viewpoint and show the development in its wider landscape context only.

For empirical testing, the wireline image on the next page can be accurately assessed in the field when converted to a transparency. If viewed with one eye at a distance of 300mm from exactly the same location and height as the original camera lens, the image will fit the real landscape cues.



V4b Figure 7- 10c - Viewpoint 10: A9 (T) Lay-by (Bad a Cheo) - Existing View

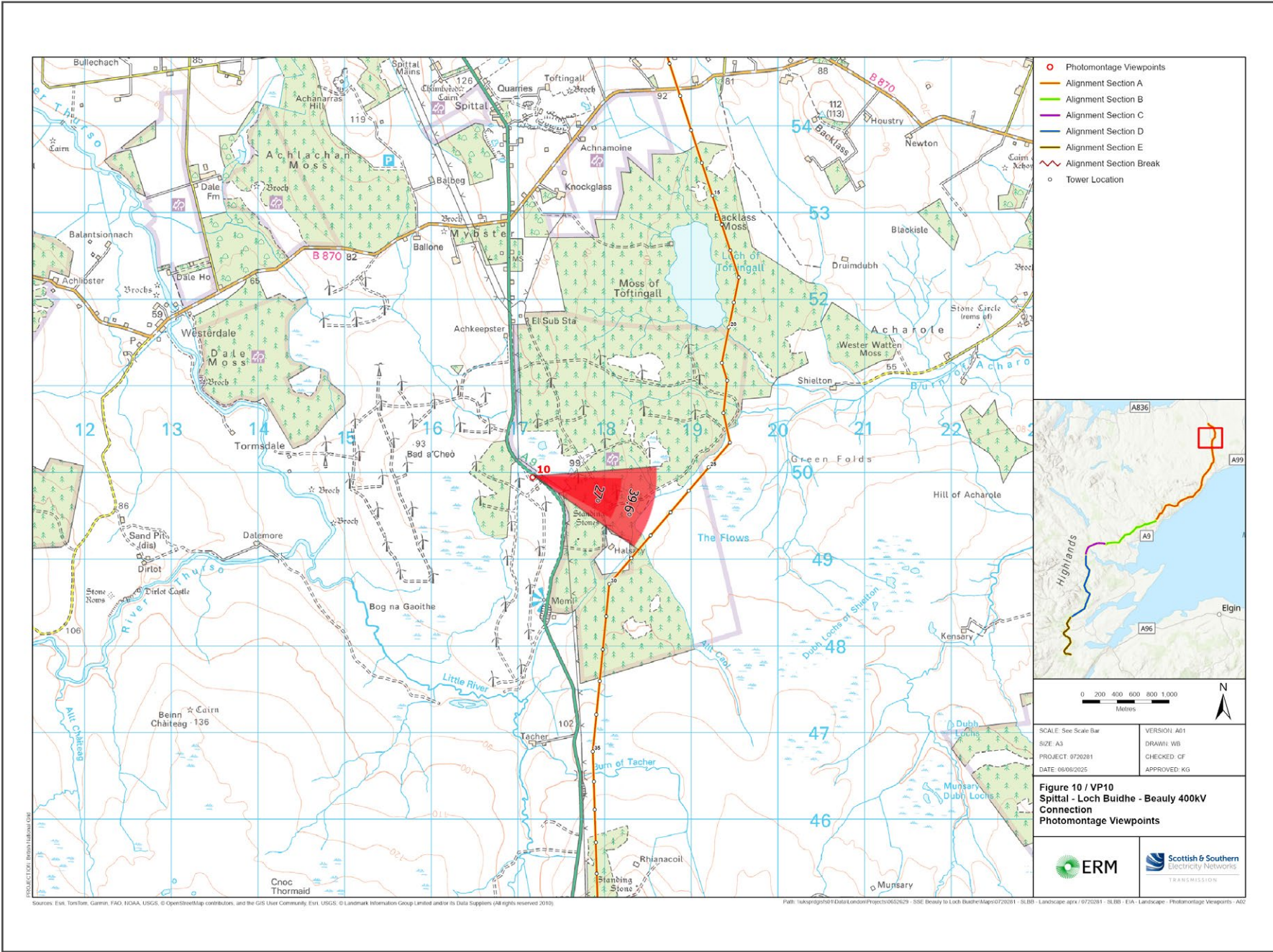
V4b Figure 7- 10d - Viewpoint 10: A9 (T) Lay-by (Bad a Cheo) - Wireline Overlay



Wireline Drawing - Proposed Development Shown In Red
 ----- Vertical Limit of Deviation: the maximum height of a tower above ground level

V4b Figure 7- 10a(i) - Viewpoint 10: A9 (T) Lay-by (Bad a Cheo)

Reproduced from Ordnance Survey digital map data © Crown copyright 2020. All rights reserved. Licence number 100048606



Grid Reference: 317173 949945 Distance to the development: 1230m AOD: 89m Direction of view: 103°

This viewpoint is on the A9, at Westerdale, about 10 km south of Halkirk.

Leave Halkirk travelling east on the B874. After 2.5 km turn right onto the A9, then in 0.7 km, turn right to stay on the A9. Continue for 10.5 km and turn into the car park on the right.



V4b Figure 7- 10b(i) -
Viewpoint 10: A9 (T) Lay-by (Bad a Cheo)

Distance to the development: 1230m Camera: Canon EOS R5 Focal Length: 50mm vertical (27°) x 28mm horizontal (65.5°) Camera height: 1.5m Date: 28/11/2024 13:45

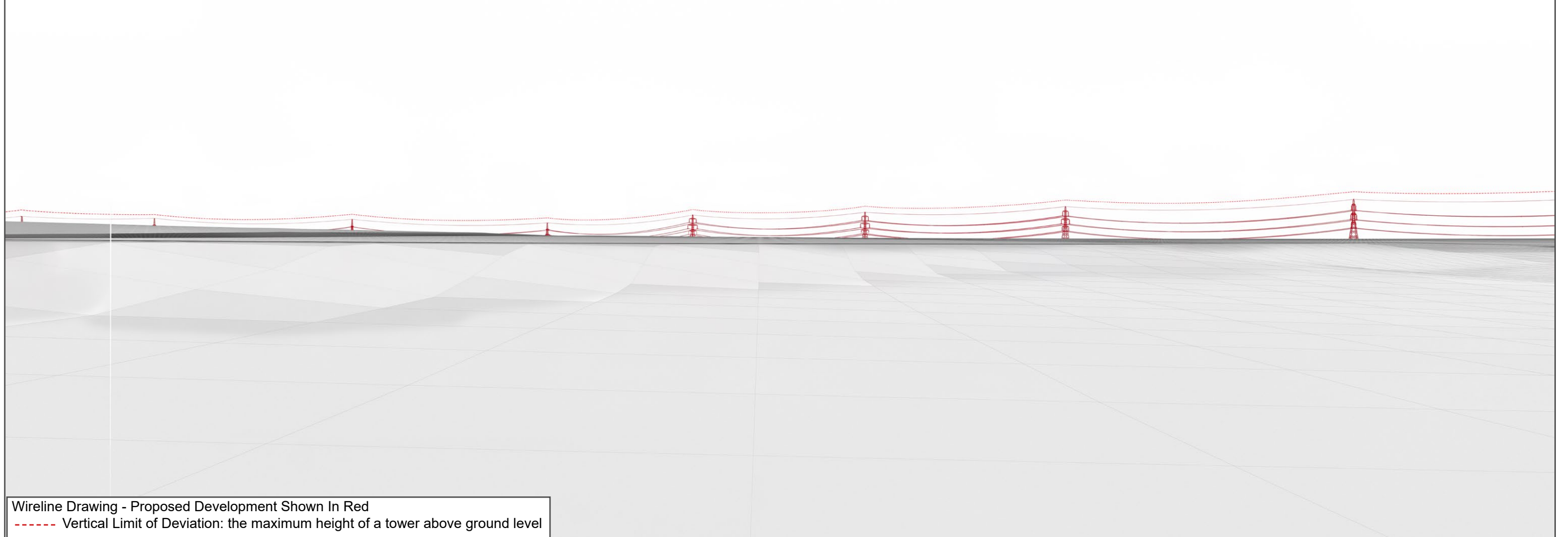
The images contained on this page and the following page are not representative of scale and distance from the actual viewpoint and show the development in its wider landscape context only.

For empirical testing, the wireline image on the next page can be accurately assessed in the field when converted to a transparency. If viewed with one eye at a distance of 300mm from exactly the same location and height as the original camera lens, the image will fit the real landscape cues.

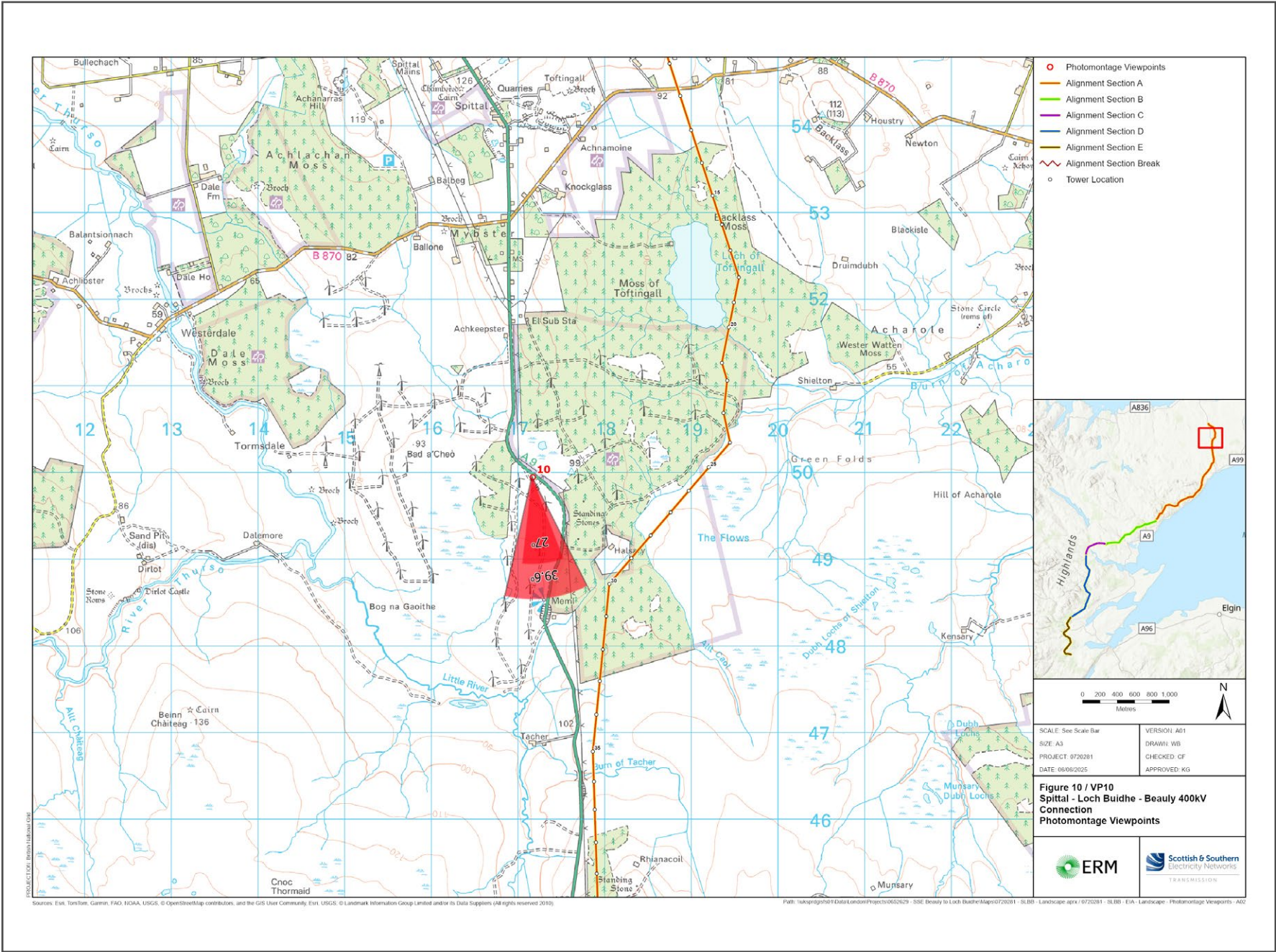


V4b Figure 7- 10c(i) - Viewpoint 10: A9 (T) Lay-by (Bad a Cheo) - Existing View

V4b Figure 7- 10d(i) - Viewpoint 10: A9 (T) Lay-by (Bad a Cheo) - Wireline Overlay



V4b Figure 7- 10a(ii) - Viewpoint 10: A9 (T) Lay-by (Bad a Cheo)



Grid Reference: 317173 949945 Distance to the development: 1230m AOD: 89m Direction of view: 168.5°

This viewpoint is on the A9, at Westerdale, about 10 km south of Halkirk.

Leave Halkirk travelling east on the B874. After 2.5 km turn right onto the A9, then in 0.7 km, turn right to stay on the A9. Continue for 10.5 km and turn into the car park on the right.

Extent of 50mm single frame image



**V4b Figure 7- 10b(ii) -
Viewpoint 10: A9 (T) Lay-by (Bad a Cheo)**

Distance to the development: 1230m Camera: Canon EOS R5 Focal Length: 50mm vertical (27°) x 28mm horizontal (65.5°) Camera height: 1.5m Date: 28/11/2024 13:45

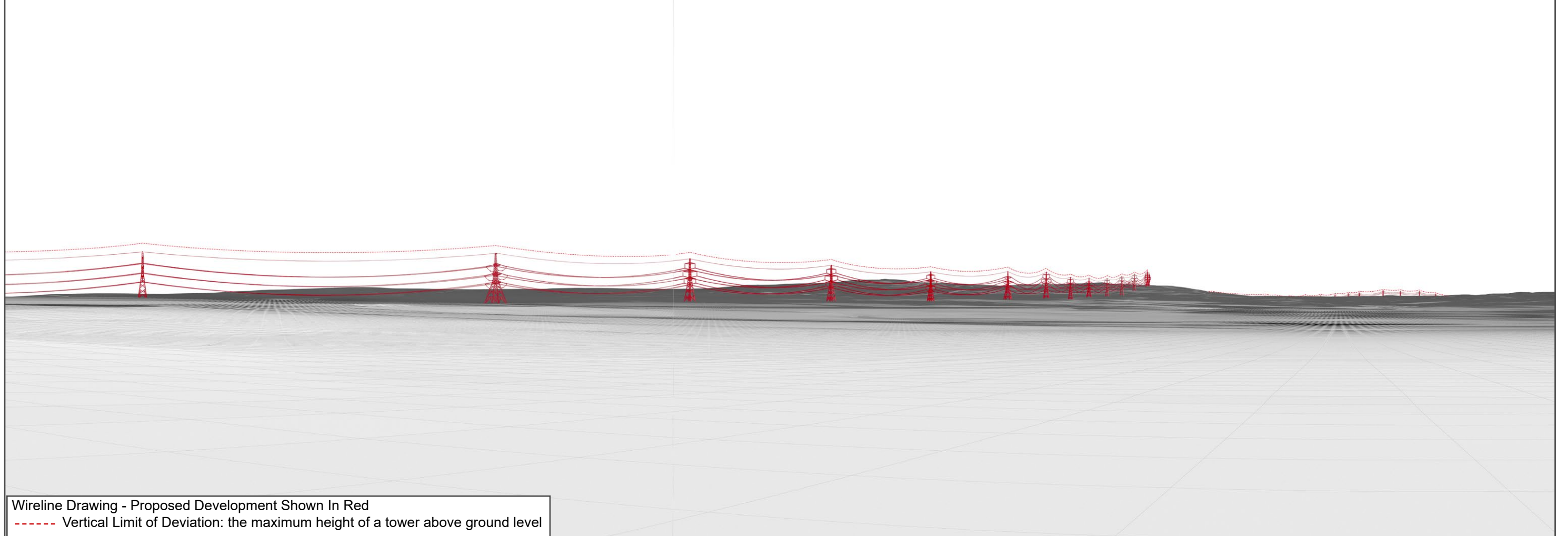
The images contained on this page and the following page are not representative of scale and distance from the actual viewpoint and show the development in its wider landscape context only.

For empirical testing, the wireline image on the next page can be accurately assessed in the field when converted to a transparency. If viewed with one eye at a distance of 300mm from exactly the same location and height as the original camera lens, the image will fit the real landscape cues.



V4b Figure 7- 10c(ii) - Viewpoint 10: A9 (T) Lay-by (Bad a Cheo) - Existing View

V4b Figure 7- 10d(ii) - Viewpoint 10: A9 (T) Lay-by (Bad a Cheo) - Wireline Overlay





V4b Figure 7- 10b(iii) -
Viewpoint 10: A9 (T) Lay-by (Bad a Cheo)

This image should be viewed at a comfortable arms length (approx. 500mm)

Distance to the development: 1230m Camera: Canon EOS R5 Focal Length: 50mm Camera height: 1.5m Date: 28/11/2024 13:45



V4b Figure 7- 10b(iv) -
Viewpoint 10: A9 (T) Lay-by (Bad a Cheo)

Distance to the development: 1230m Camera: Canon EOS R5 Focal Length: 75mm Camera height: 1.5m Date: 28/11/2024 13:45