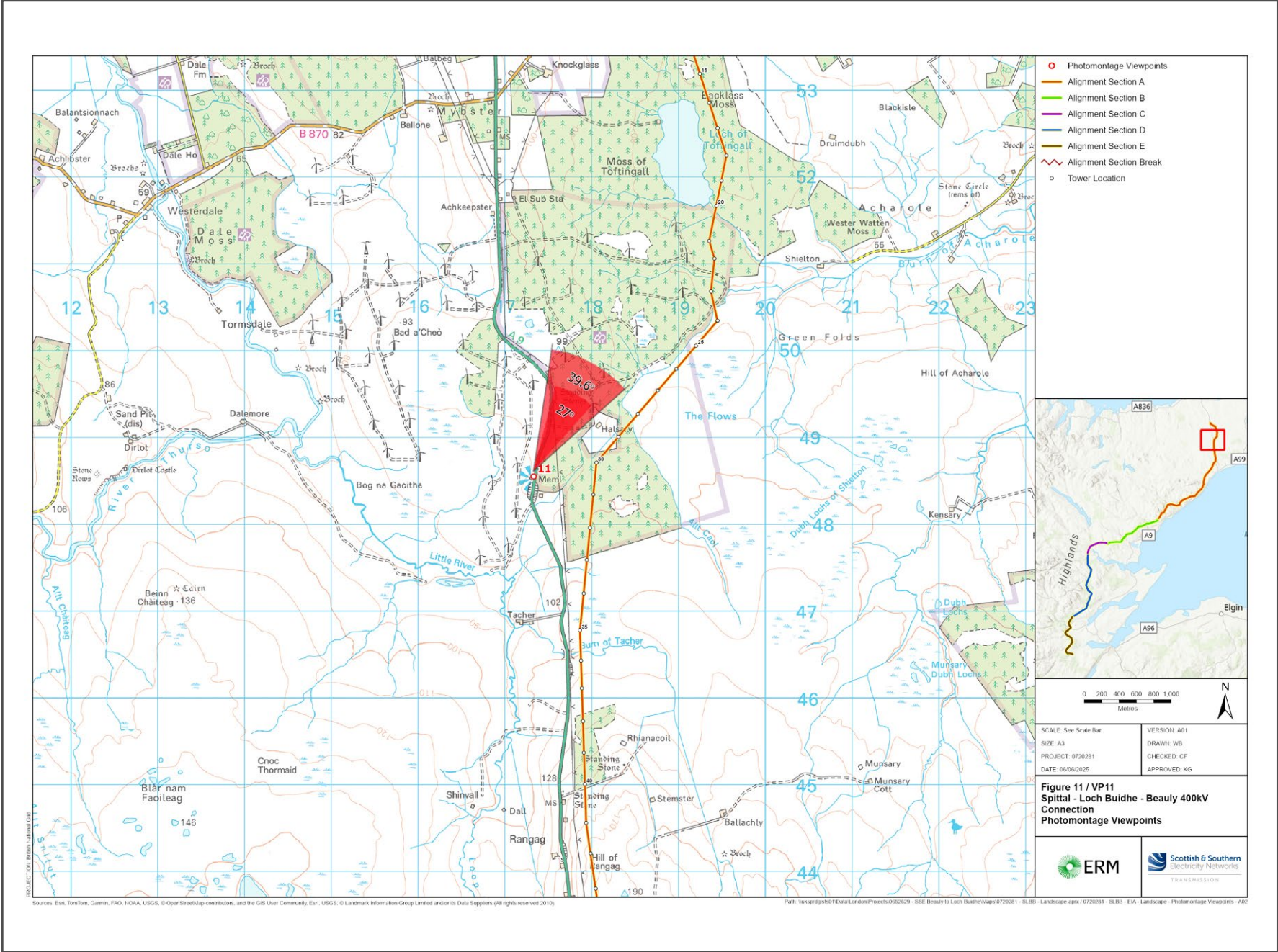


V4b Figure 7 - 11a - Viewpoint 11: A9 (T) Air Crew Memorial



Grid Reference: 317332 948551 Distance to the development: 660m AOD: 86m Direction of view: 27°

This viewpoint is on the A9, at Westerdale, about 10 km south of Halkirk.

Leave Halkirk travelling east on the B874. After 2.5 km turn right onto the A9, then in 0.7 km, turn right to stay on the A9. Continue for 10.5 km and turn into the car park on the right.

Extent of 50mm single frame image



V4b Figure 7 - 11b -
Viewpoint 11: A9 (T) Air Crew Memorial

Distance to the development: 660m Camera: Canon EOS R5 Focal Length: 50mm vertical (27°) x 28mm horizontal (65.5°) Camera height: 1.5m Date: 28/11/2024 12:45

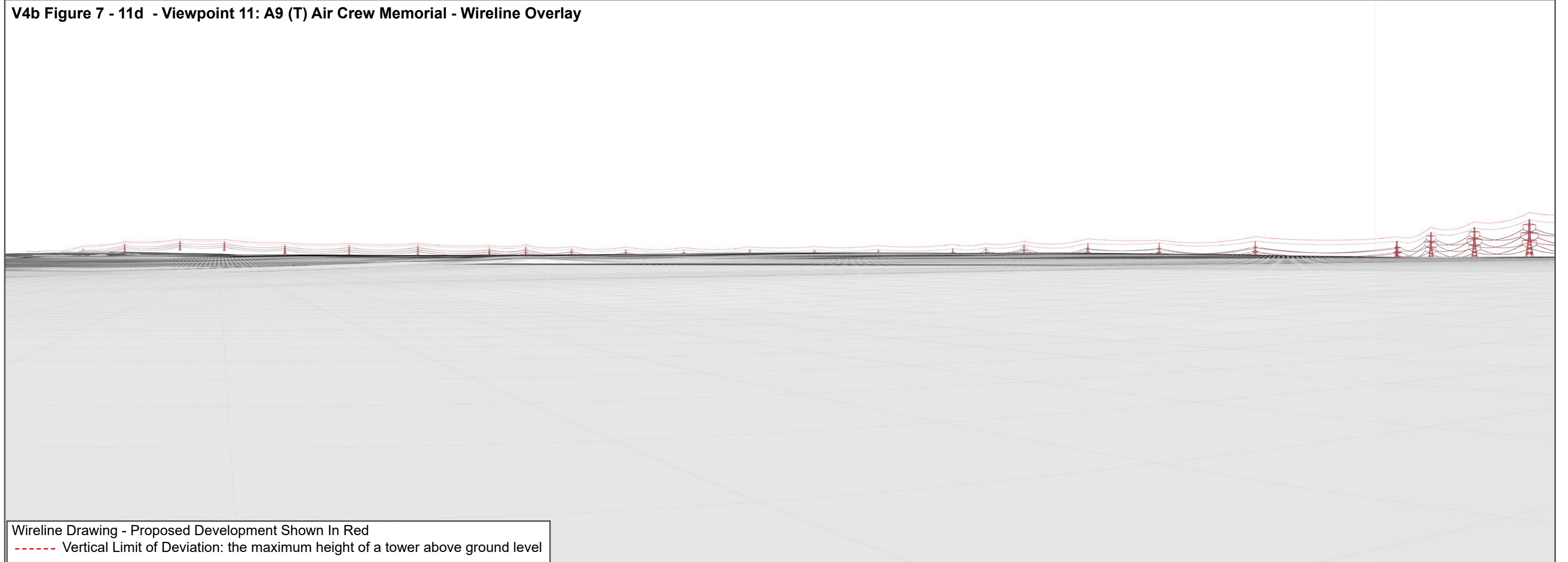
The images contained on this page and the following page are not representative of scale and distance from the actual viewpoint and show the development in its wider landscape context only.

For empirical testing, the wireline image on the next page can be accurately assessed in the field when converted to a transparency. If viewed with one eye at a distance of 300mm from exactly the same location and height as the original camera lens, the image will fit the real landscape cues.



V4b Figure 7 - 11c - Viewpoint 11: A9 (T) Air Crew Memorial - Existing View

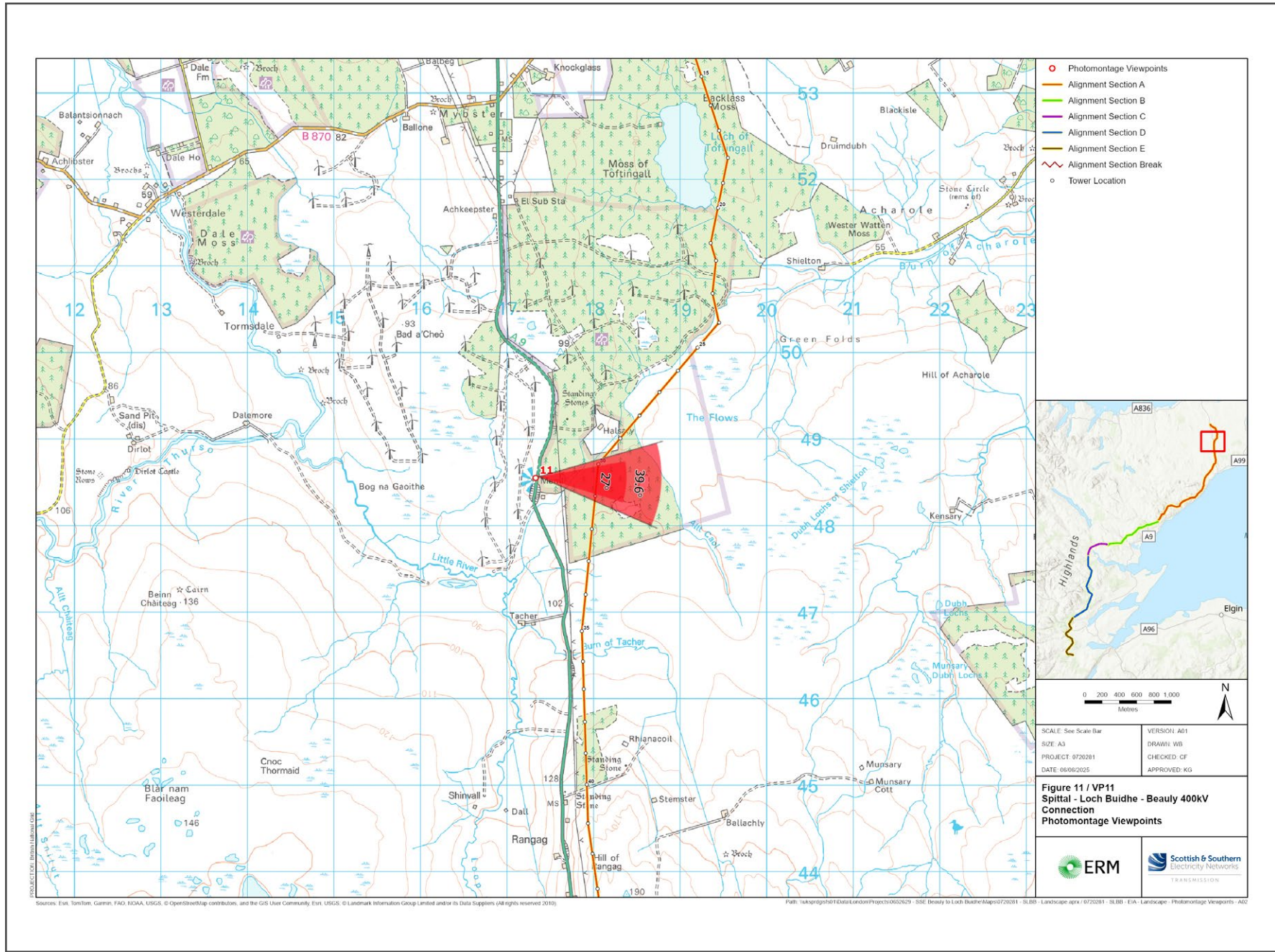
V4b Figure 7 - 11d - Viewpoint 11: A9 (T) Air Crew Memorial - Wireline Overlay



Wireline Drawing - Proposed Development Shown In Red
 - - - - - Vertical Limit of Deviation: the maximum height of a tower above ground level

V4b Figure 7 - 11a(i) - Viewpoint 11: A9 (T) Air Crew Memorial

Reproduced from Ordnance Survey digital map data © Crown copyright 2020. All rights reserved. Licence number 100048606



Grid Reference: 317332 948551 Distance to the development: 660m AOD: 86m Direction of view: 92°

This viewpoint is on the A9, at Westerdale, about 10 km south of Halkirk.

Leave Halkirk travelling east on the B874. After 2.5 km turn right onto the A9, then in 0.7 km, turn right to stay on the A9. Continue for 10.5 km and turn into the car park on the right.

Extent of 50mm single frame image



**V4b Figure 7 - 11b(i) -
Viewpoint 11: A9 (T) Air Crew Memorial**

Distance to the development: 660m Camera: Canon EOS R5 Focal Length: 50mm vertical (27°) x 28mm horizontal (65.5°) Camera height: 1.5m Date: 28/11/2024 12:45

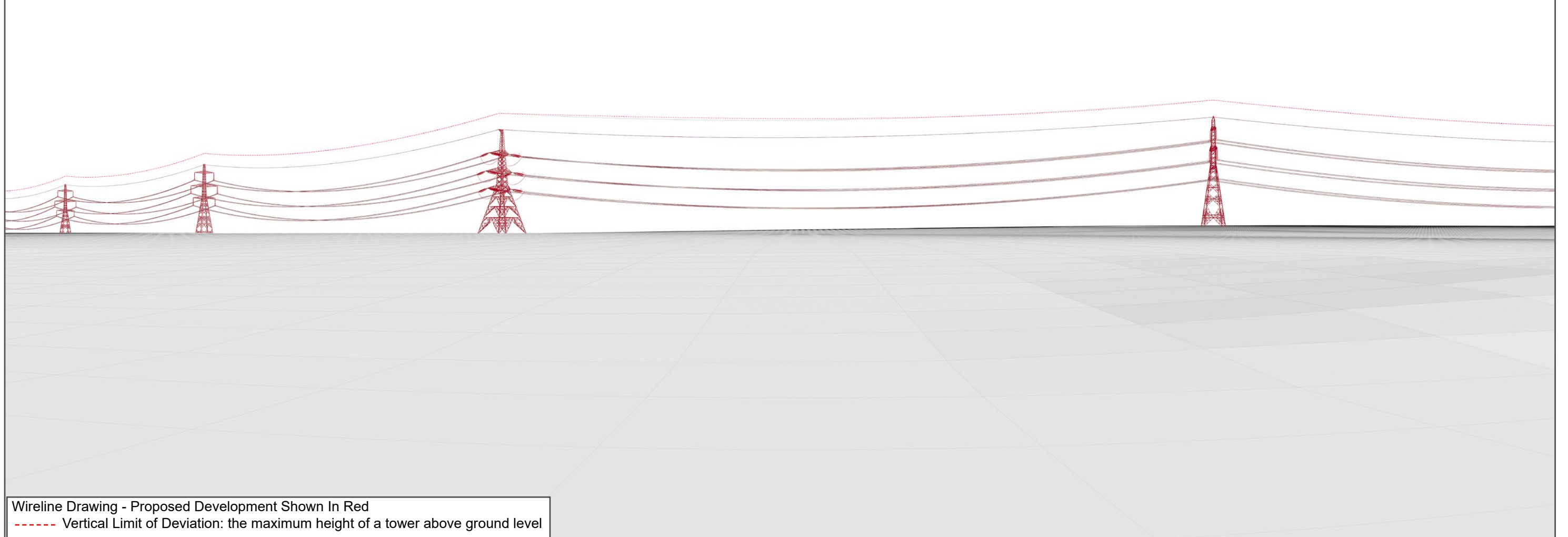
The images contained on this page and the following page are not representative of scale and distance from the actual viewpoint and show the development in its wider landscape context only.

For empirical testing, the wireline image on the next page can be accurately assessed in the field when converted to a transparency. If viewed with one eye at a distance of 300mm from exactly the same location and height as the original camera lens, the image will fit the real landscape cues.



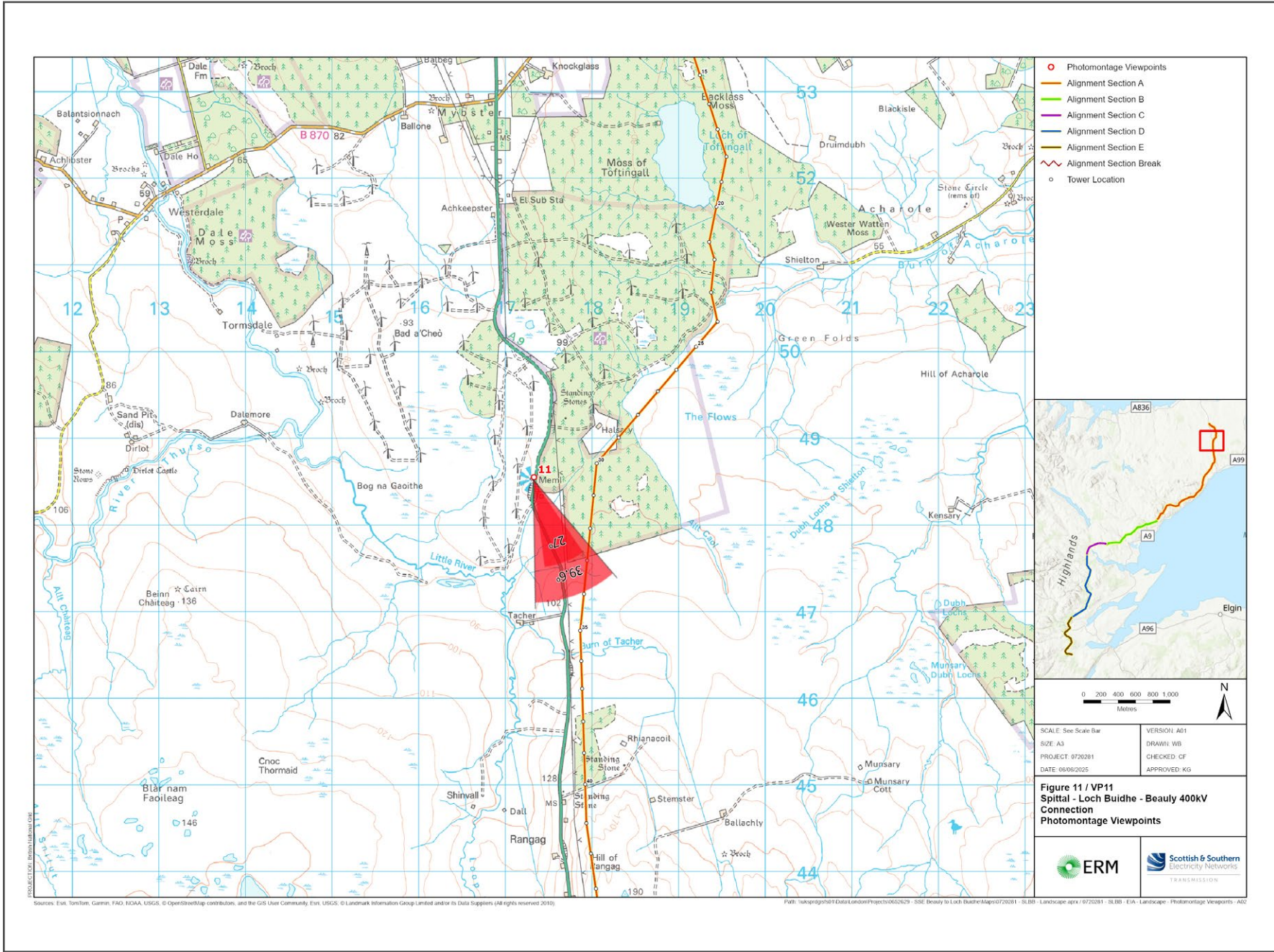
V4b Figure 7 - 11c(i) - Viewpoint 11: A9 (T) Air Crew Memorial - Existing View

V4b Figure 7 - 11d(i) - Viewpoint 11: A9 (T) Air Crew Memorial - Wireline Overlay



V4b Figure 7 - 11a(ii) - Viewpoint 11: A9 (T) Air Crew Memorial

Reproduced from Ordnance Survey digital map data © Crown copyright 2020. All rights reserved. Licence number 100048606



Grid Reference: 317332 948551 Distance to the development: 660m AOD: 86m Direction of view: 157°

This viewpoint is on the A9, at Westerdale, about 10 km south of Halkirk.

Leave Halkirk travelling east on the B874. After 2.5 km turn right onto the A9, then in 0.7 km, turn right to stay on the A9. Continue for 10.5 km and turn into the car park on the right.

Extent of 50mm single frame image



**V4b Figure 7 - 11b(ii) -
Viewpoint 11: A9 (T) Air Crew Memorial**

Distance to the development: 660m Camera: Canon EOS R5 Focal Length: 50mm vertical (27°) x 28mm horizontal (65.5°) Camera height: 1.5m Date: 28/11/2024 12:45

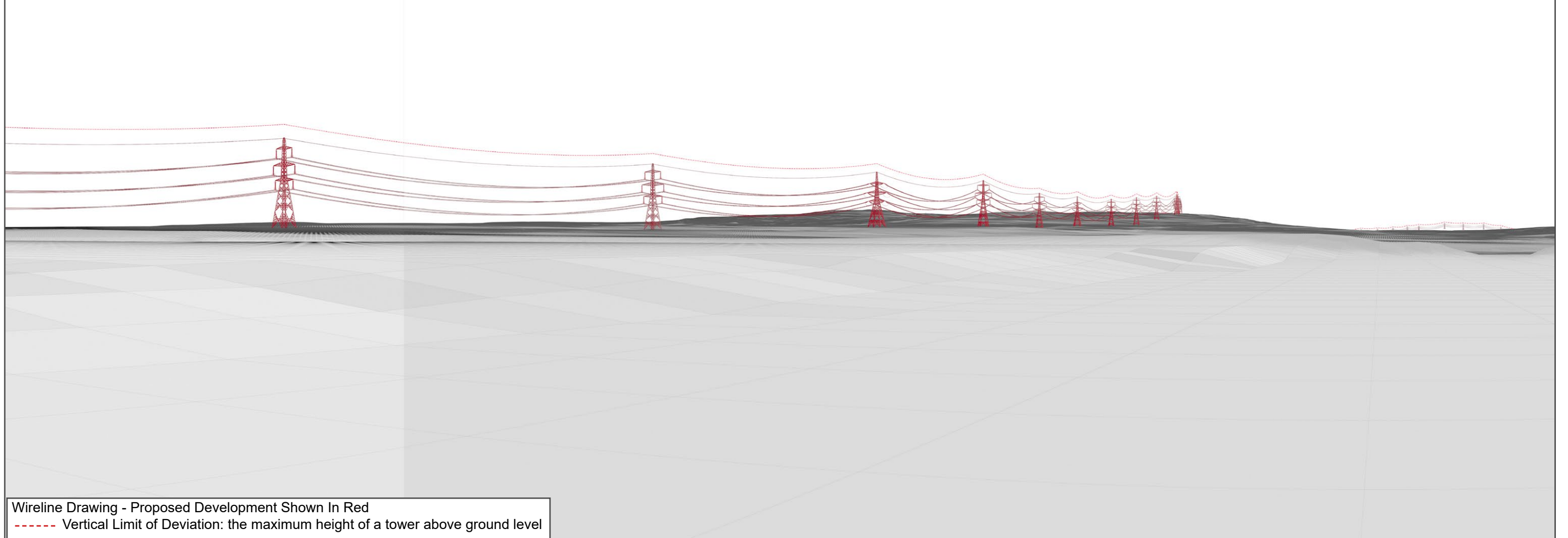
The images contained on this page and the following page are not representative of scale and distance from the actual viewpoint and show the development in its wider landscape context only.

For empirical testing, the wireline image on the next page can be accurately assessed in the field when converted to a transparency. If viewed with one eye at a distance of 300mm from exactly the same location and height as the original camera lens, the image will fit the real landscape cues.



V4b Figure 7 - 11c(ii) - Viewpoint 11: A9 (T) Air Crew Memorial - Existing View

V4b Figure 7 - 11d(ii) - Viewpoint 11: A9 (T) Air Crew Memorial - Wireline Overlay





V4b Figure 7 - 11b(iii) -
Viewpoint 11: A9 (T) Air Crew Memorial

This image should be viewed at a comfortable arms length (approx. 500mm)

Distance to the development: 660m

Camera: Canon EOS R5

Focal Length: 50mm

Camera height: 1.5m

Date: 28/11/2024 12:45



**V4b Figure 7 - 11b(iv) -
Viewpoint 11: A9 (T) Air Crew Memorial**

This image should be viewed at a comfortable arms length (approx. 500mm)

Distance to the development: 660m

Camera: Canon EOS R5

Focal Length: 75mm

Camera height: 1.5m

Date: 28/11/2024 12:45