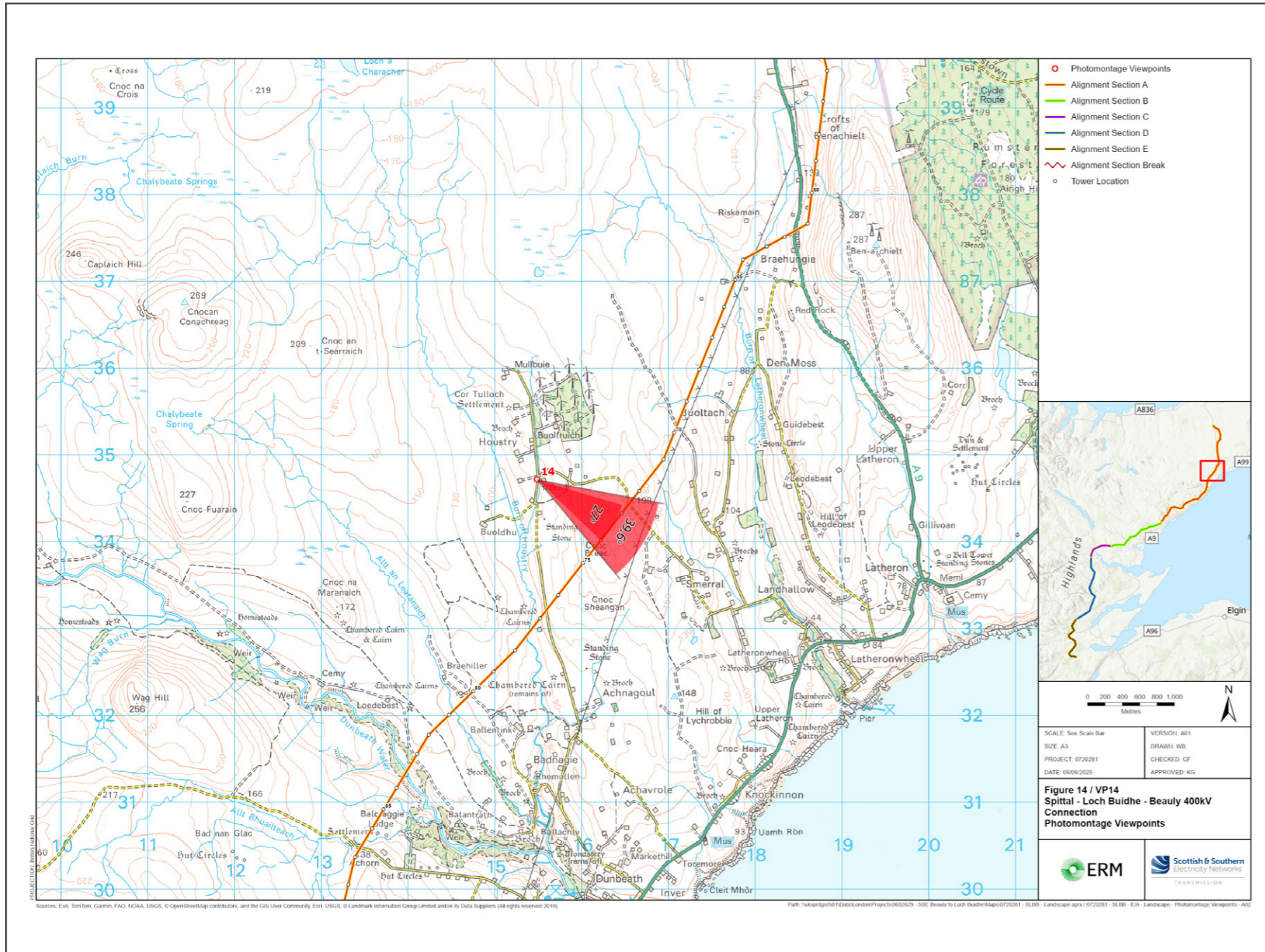


V4b Figure 7- 14a - Viewpoint 14: Houstry

Reproduced from Ordnance Survey digital map data © Crown copyright 2020. All rights reserved. Licence number 100048606



Grid Reference: 315489 934719 Distance to the development: 1025m AOD: 127m Direction of view: 120°

This viewpoint is near a residential property at Houstry.

Turn off the A9 into Dunbeath. Go straight across the junction and past the local Spar shop. Continue north on the unnamed road for 700m, and turn left at the end of the road. Continue for 4.6km, and stop at the four way junction

The camera location is on the right of the junction, as shown in the adjacent photograph.

Extent of 50mm single frame image



Photomontage

V4b Figure 7- 14b - Viewpoint 14: Houstry

Distance to the development: 1025m Camera: Canon EOS R5 Focal Length: 50mm vertical (27°) x 28mm horizontal (65.5°) Camera height: 1.5m Date: 29/11/2024 11:00

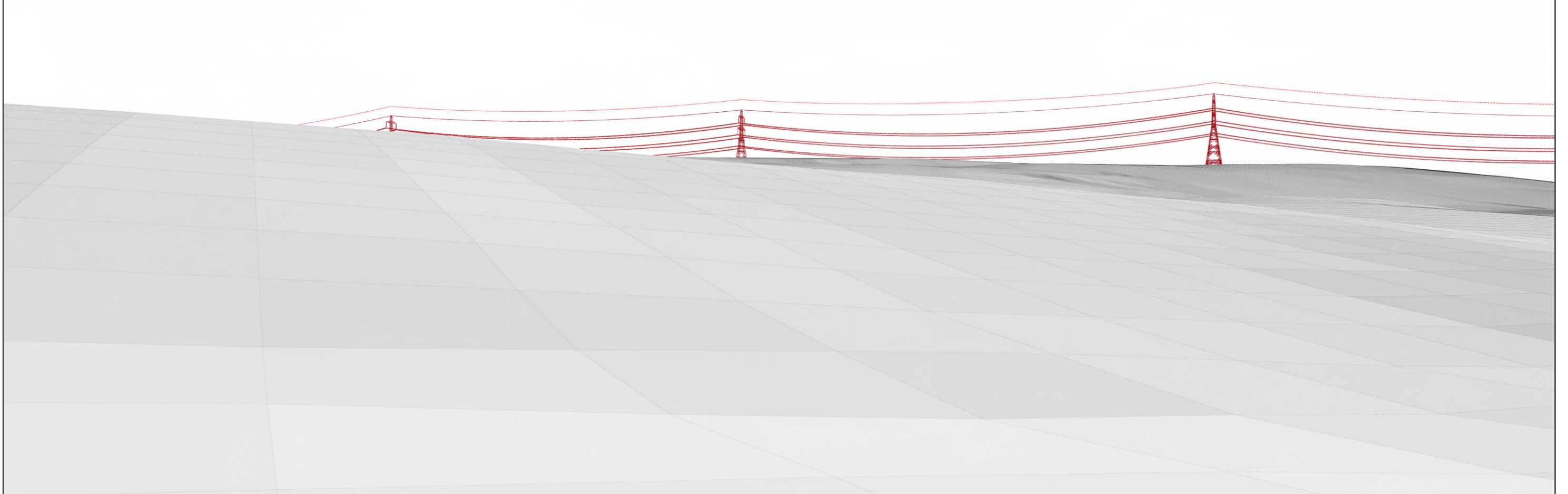
The images contained on this page and the following page are not representative of scale and distance from the actual viewpoint and show the development in its wider landscape context only.

For empirical testing, the wireline image on the next page can be accurately assessed in the field when converted to a transparency. If viewed with one eye at a distance of 300mm from exactly the same location and height as the original camera lens, the image will fit the real landscape cues.



V4b Figure 7- 14c - Viewpoint 14: Houstry - Existing View

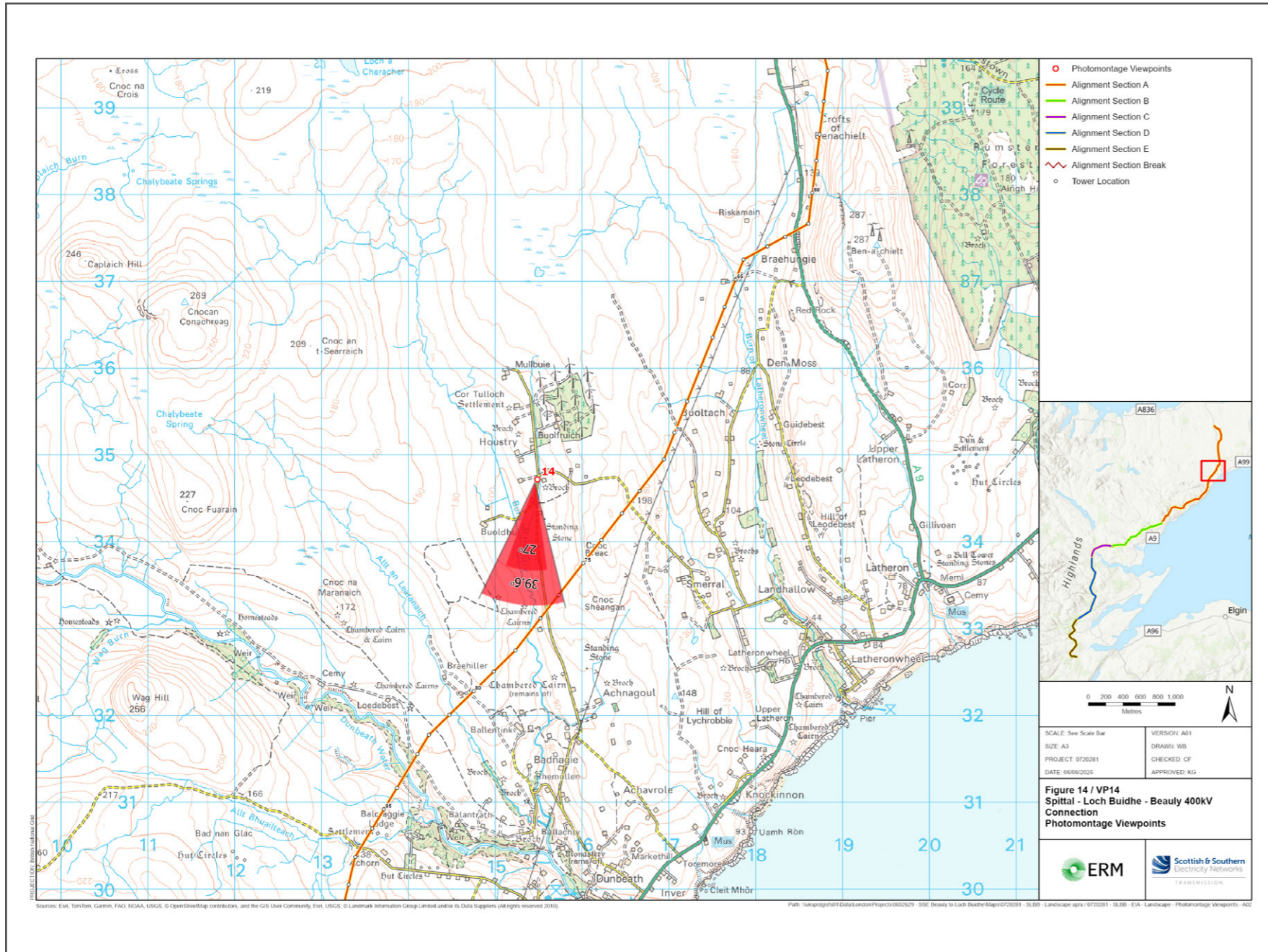
V4b Figure 7- 14d - Viewpoint 14: Houstry - Wireline Overlay



Wireline Drawing - Proposed Development Shown In Red
----- Vertical Limit of Deviation: the maximum height of a tower above ground level

V4b Figure 7- 14a(i) - Viewpoint 14: Houstry

Reproduced from Ordnance Survey digital map data © Crown copyright 2020. All rights reserved. Licence number 100048606



Grid Reference: 315489 934719 Distance to the development: 1025m AOD: 127m Direction of view: 185°

This viewpoint is near a residential property at Houstry.

Turn off the A9 into Dunbeath. Go straight across the junction and past the local Spar shop. Continue north on the unnamed road for 700m, and turn left at the end of the road. Continue for 4.6km, and stop at the four way junction

The camera location is on the right of the junction, as shown in the adjacent photograph.

Extent of 50mm single frame image

**V4b Figure 7- 14b(i) - Viewpoint 14: Houstry**

Distance to the development: 1025m Camera: Canon EOS R5 Focal Length: 50mm vertical (27°) x 28mm horizontal (65.5°) Camera height: 1.5m Date: 29/11/2024 11:00

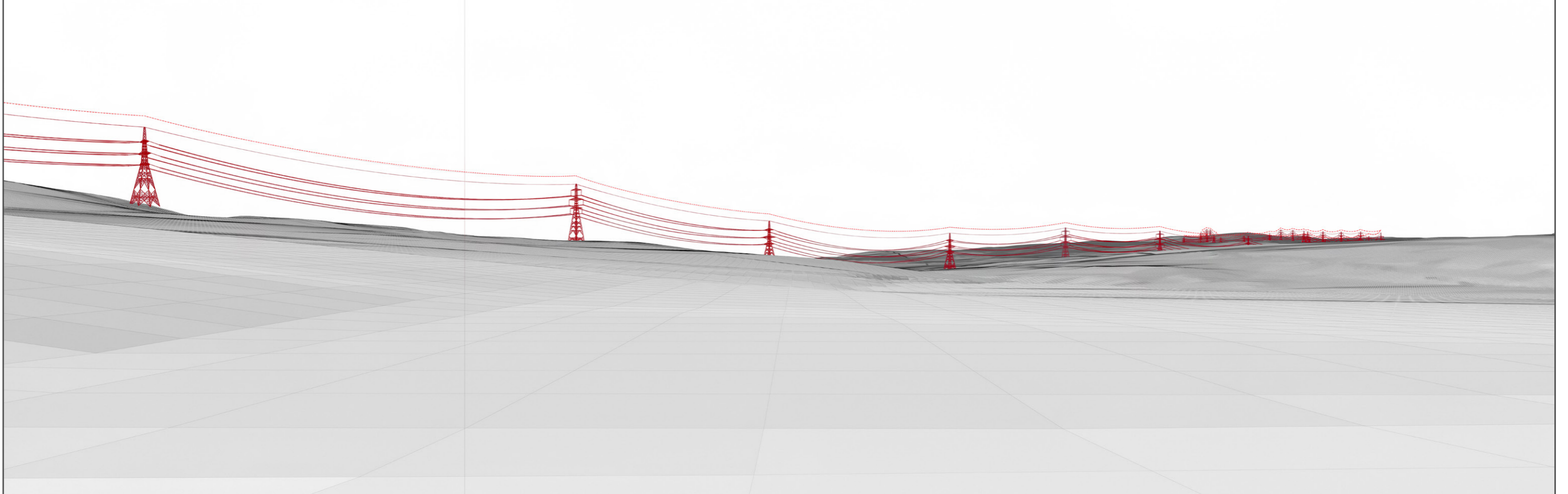
The images contained on this page and the following page are not representative of scale and distance from the actual viewpoint and show the development in its wider landscape context only.

For empirical testing, the wireline image on the next page can be accurately assessed in the field when converted to a transparency. If viewed with one eye at a distance of 300mm from exactly the same location and height as the original camera lens, the image will fit the real landscape cues.



V4b Figure 7- 14c(i) - Viewpoint 14: Houstry - Existing View

V4b Figure 7- 14d(i) - Viewpoint 14: Houstry - Wireline Overlay



Wireline Drawing - Proposed Development Shown In Red
----- Vertical Limit of Deviation: the maximum height of a tower above ground level



V4b Figure 7- 14b(ii) - Viewpoint 14: Houstry

Distance to the development: 1025m Camera: Canon EOS R5 Focal Length: 50mm Camera height: 1.5m Date: 29/11/2024 11:00

This image should be viewed at a comfortable arms length (approx. 500mm)



V4b Figure 7- 14b(iii) - Viewpoint 14: Houstry

Distance to the development: 1025m Camera: Canon EOS R5 Focal Length: 75mm Camera height: 1.5m Date: 29/11/2024 11:00

This image should be viewed at a comfortable arms length (approx. 500mm)