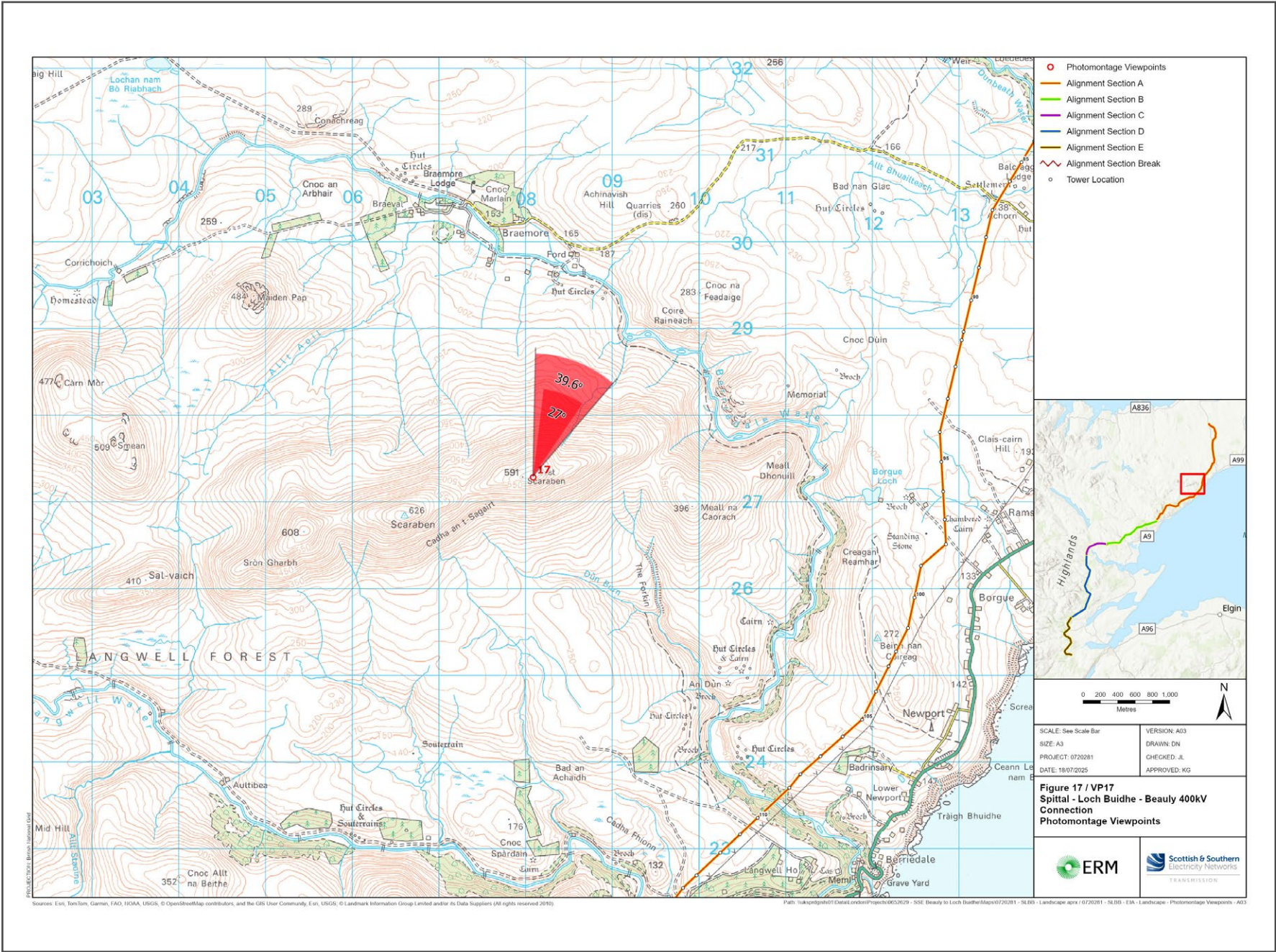


V4b Figure 7- 17a - Viewpoint 17: East Scaraben

Reproduced from Ordnance Survey digital map data © Crown copyright 2020. All rights reserved. Licence number 100048606



Grid Reference: 308088 927282      Distance to the development: 4575m      AOD: 585m

This viewpoint is on the summit of East Scaraben.

The camera location is as shown in the adjacent photograph.



Extent of 50mm single frame image



**V4b Figure 7- 17b - Viewpoint 17: East Scaraben**

Distance to the development: 4575m    Camera: Canon EOS R5    Focal Length: 50mm vertical (27°) x 28mm horizontal (65.5°)    Camera height: 1.5m    Date: 18/09/2024 16:26

The images contained on this page and the following page are not representative of scale and distance from the actual viewpoint and show the development in its wider landscape context only.

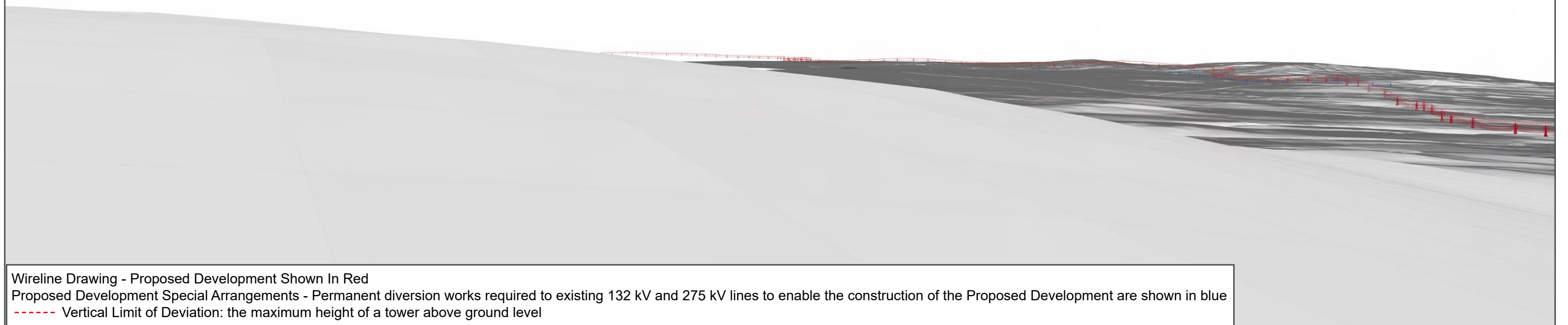
For empirical testing, the wireline image on the next page can be accurately assessed in the field when converted to a transparency. If viewed with one eye at a distance of 300mm from exactly the same location and height as the original camera lens, the image will fit the real landscape cues.





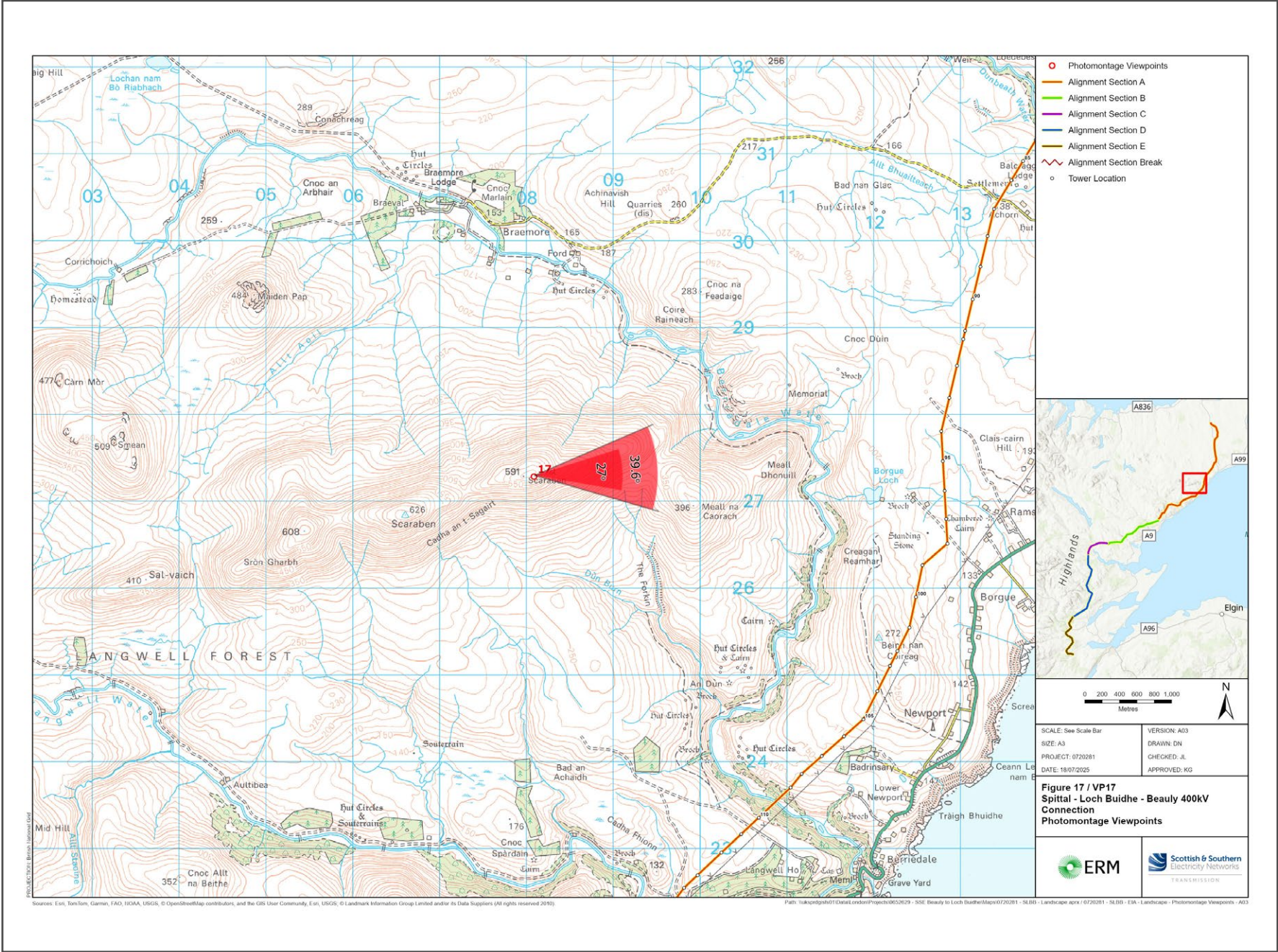
V4b Figure 7- 17c - Viewpoint 17: East Scaraben - Existing View

V4b Figure 7- 17d - Viewpoint 17: East Scaraben - Wireline Overlay





V4b Figure 7- 17a(i) - Viewpoint 17: East Scaraben



Grid Reference: 308088 927282      Distance to the development: 4575m      AOD: 585m

This viewpoint is on the summit of East Scaraben.

The camera location is as shown in the adjacent photograph.





Extent of 50mm single frame image



**V4b Figure 7- 17b(i) - Viewpoint 17: East Scaraben**

Distance to the development: 4575m    Camera: Canon EOS R5    Focal Length: 50mm vertical (27°) x 28mm horizontal (65.5°)    Camera height: 1.5m    Date: 18/09/2024 16:26

The images contained on this page and the following page are not representative of scale and distance from the actual viewpoint and show the development in its wider landscape context only.

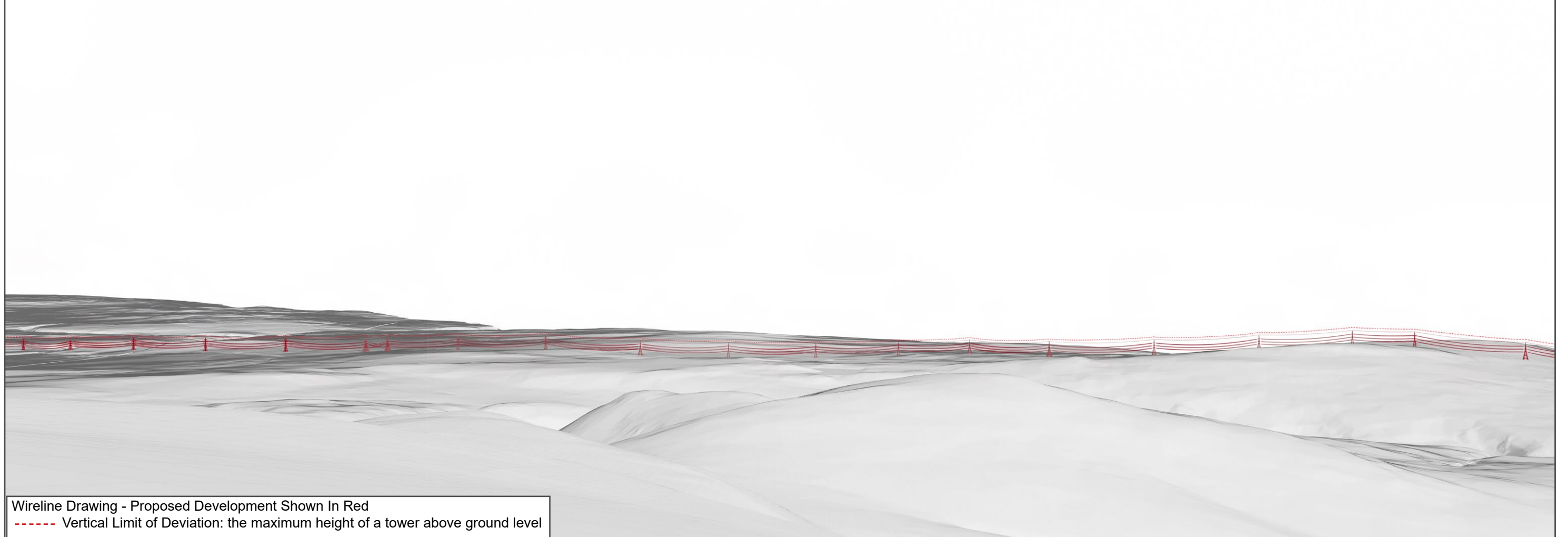
For empirical testing, the wireline image on the next page can be accurately assessed in the field when converted to a transparency. If viewed with one eye at a distance of 300mm from exactly the same location and height as the original camera lens, the image will fit the real landscape cues.





V4b Figure 7- 17c(i) - Viewpoint 17: East Scaraben - Existing View

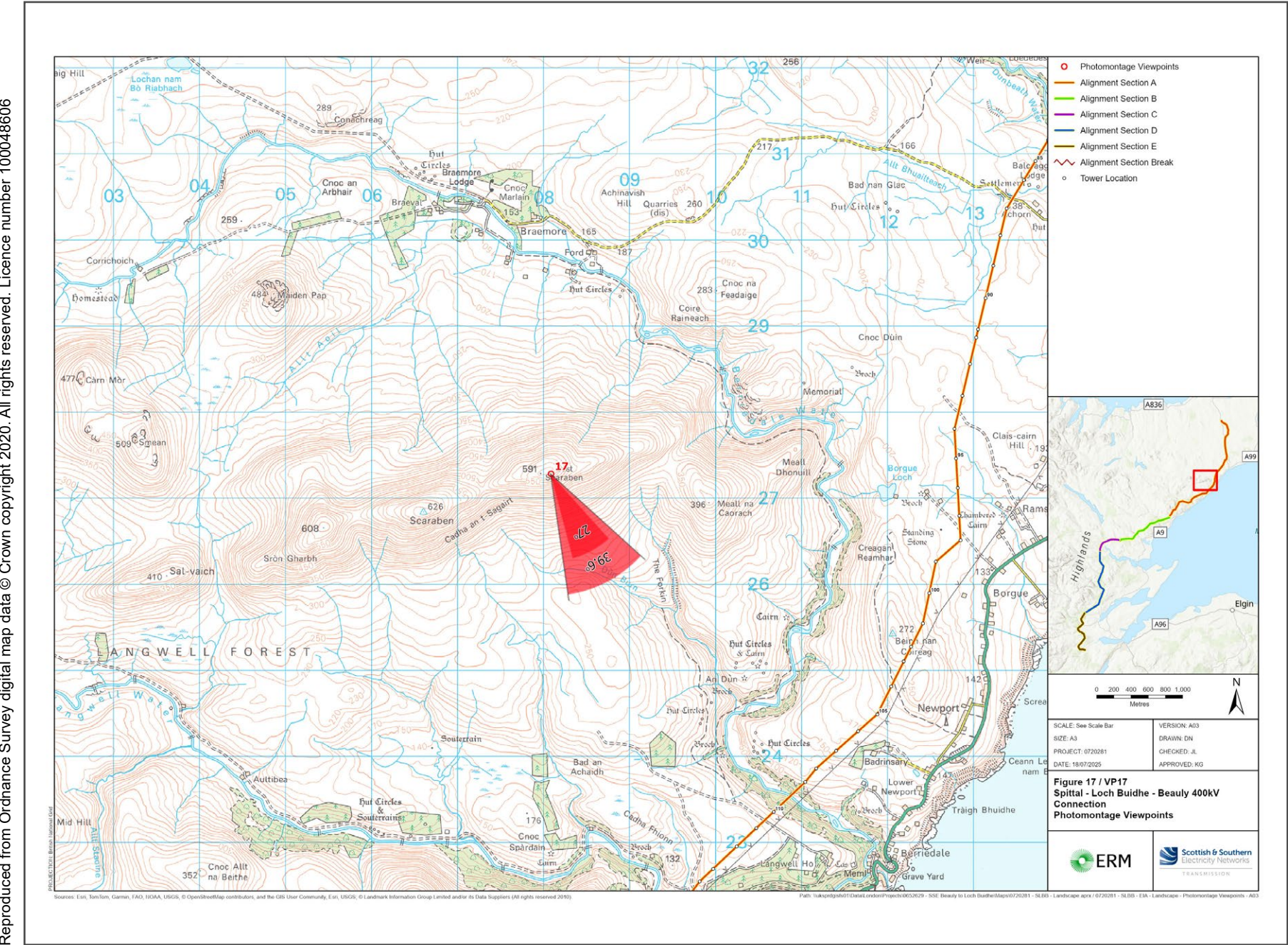
V4b Figure 7- 17d(i) - Viewpoint 17: East Scaraben - Wireline Overlay



Wireline Drawing - Proposed Development Shown In Red  
 ----- Vertical Limit of Deviation: the maximum height of a tower above ground level



V4b Figure 7- 17a(ii) - Viewpoint 17: East Scaraben



Grid Reference: 308088 927282 Distance to the development: 4575m AOD: 585m

This viewpoint is on the summit of East Scaraben.

The camera location is as shown in the adjacent photograph.





Extent of 50mm single frame image



**V4b Figure 7- 17b(ii) - Viewpoint 17: East Scaraben** Distance to the development: 4575m Camera: Canon EOS R5 Focal Length: 50mm vertical (27°) x 28mm horizontal (65.5°) Camera height: 1.5m Date: 18/09/2024 16:26

The images contained on this page and the following page are not representative of scale and distance from the actual viewpoint and show the development in its wider landscape context only.

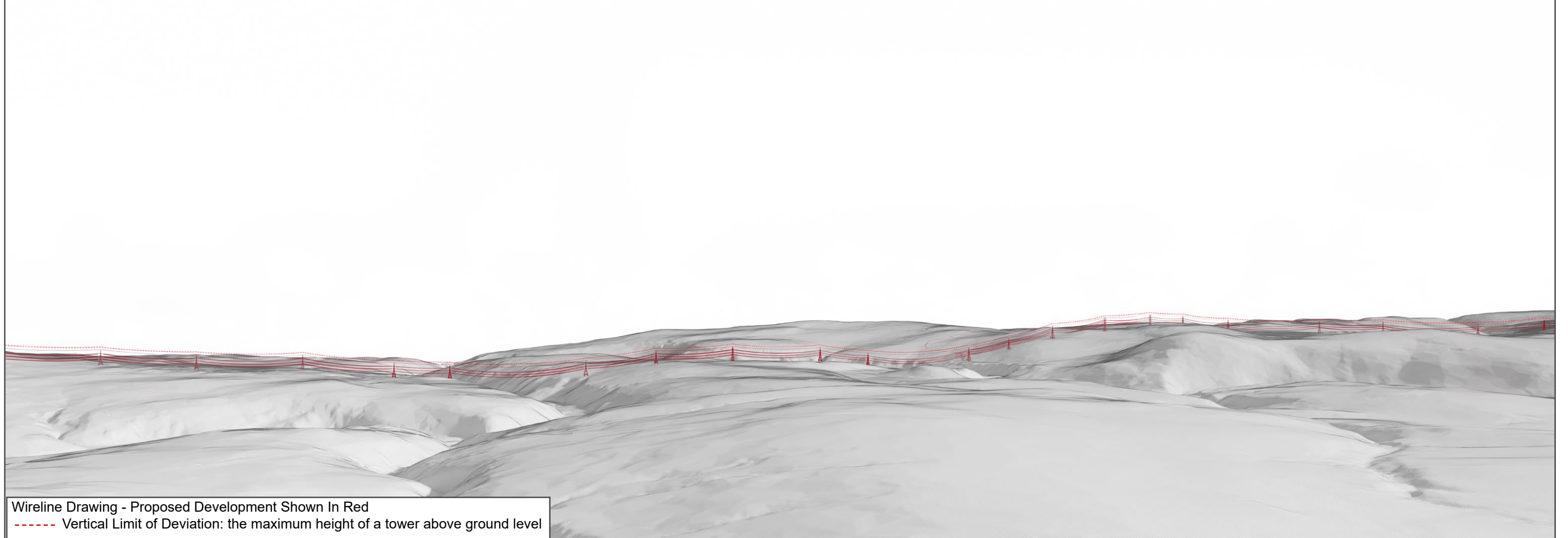
For empirical testing, the wireline image on the next page can be accurately assessed in the field when converted to a transparency. If viewed with one eye at a distance of 300mm from exactly the same location and height as the original camera lens, the image will fit the real landscape cues.





V4b Figure 7- 17c(ii) - Viewpoint 17: East Scaraben - Existing View

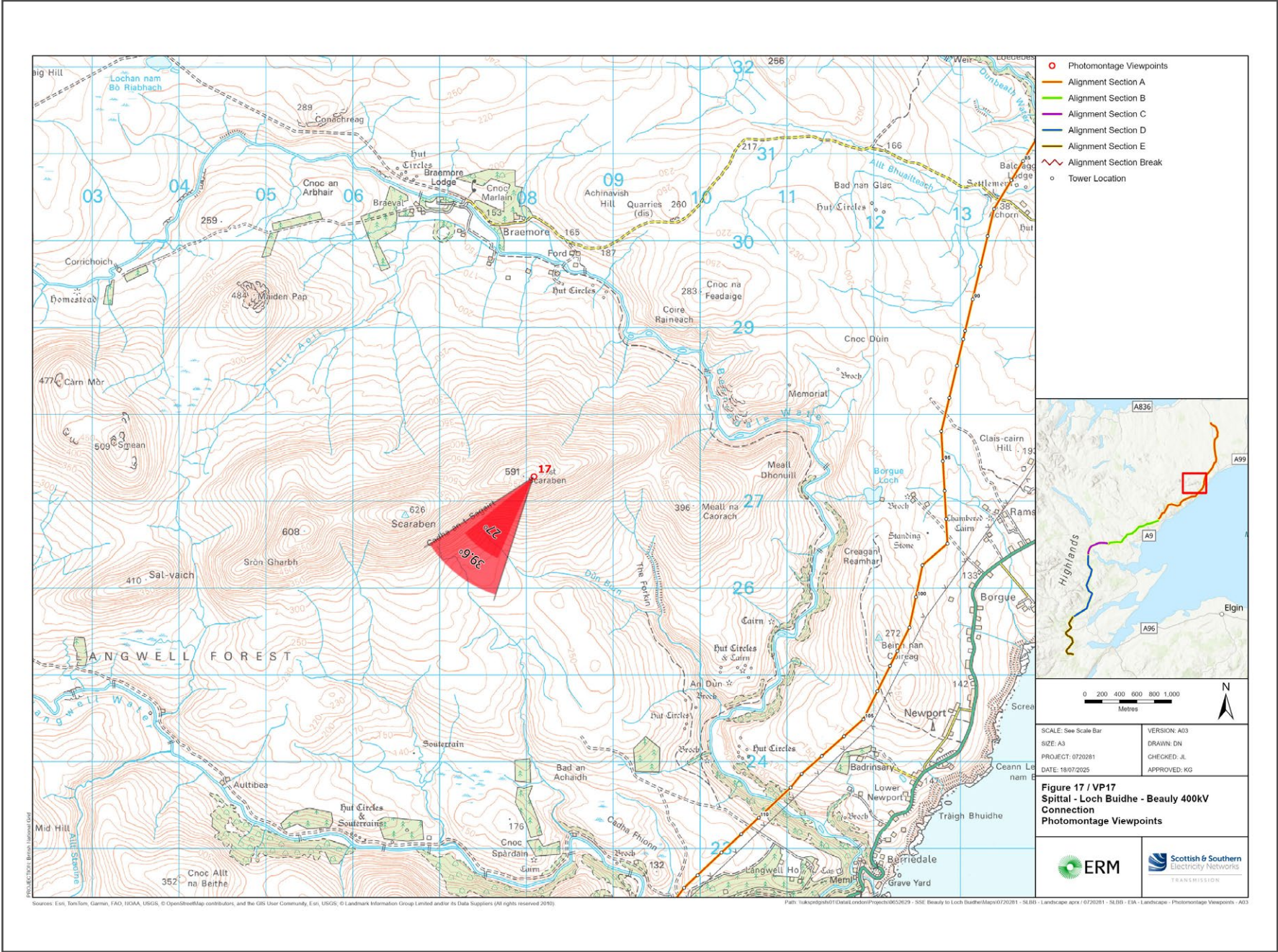
V4b Figure 7- 17d(ii) - Viewpoint 17: East Scaraben - Wireline Overlay



Wireline Drawing - Proposed Development Shown In Red  
 ----- Vertical Limit of Deviation: the maximum height of a tower above ground level



V4b Figure 7- 17a(iii) - Viewpoint 17: East Scaraben



Grid Reference: 308088 927282      Distance to the development: 4575m      AOD: 585m

This viewpoint is on the summit of East Scaraben.

The camera location is as shown in the adjacent photograph.





Extent of 50mm single frame image



Photomontage

**V4b Figure 7- 17b(iii) - Viewpoint 17: East Scaraben** Distance to the development: 4575m Camera: Canon EOS R5 Focal Length: 50mm vertical (27°) x 28mm horizontal (65.5°) Camera height: 1.5m Date: 18/09/2024 16:26

The images contained on this page and the following page are not representative of scale and distance from the actual viewpoint and show the development in its wider landscape context only.

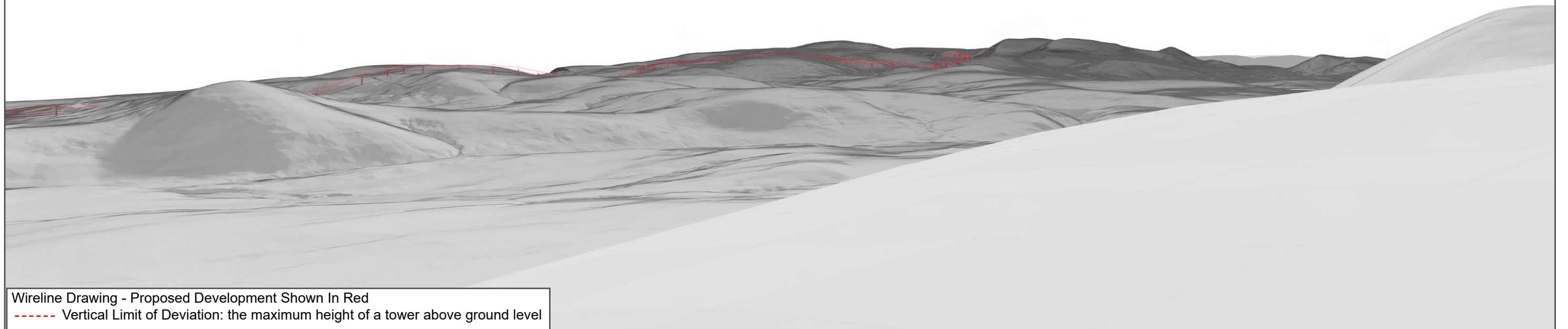
For empirical testing, the wireline image on the next page can be accurately assessed in the field when converted to a transparency. If viewed with one eye at a distance of 300mm from exactly the same location and height as the original camera lens, the image will fit the real landscape cues.





V4b Figure 7- 17c(iii) - Viewpoint 17: East Scaraben - Existing View

V4b Figure 7- 17d(iii) - Viewpoint 17: East Scaraben - Wireline Overlay



Wireline Drawing - Proposed Development Shown In Red  
 ----- Vertical Limit of Deviation: the maximum height of a tower above ground level





**V4b Figure 7- 17b(iv) - Viewpoint 17: East Scaraben**

Distance to the development: 4575m

Camera: Canon EOS R5

Focal Length: 50mm

Camera height: 1.5m

Date: 18/09/2024 16:26

This image should be viewed at a comfortable arms length (approx. 500mm)





**V4b Figure 7- 17b(v) - Viewpoint 17: East Scaraben**

Distance to the development: 4575m

Camera: Canon EOS R5

Focal Length: 75mm

Camera height: 1.5m

Date: 18/09/2024 16:26

This image should be viewed at a comfortable arms length (approx. 500mm)