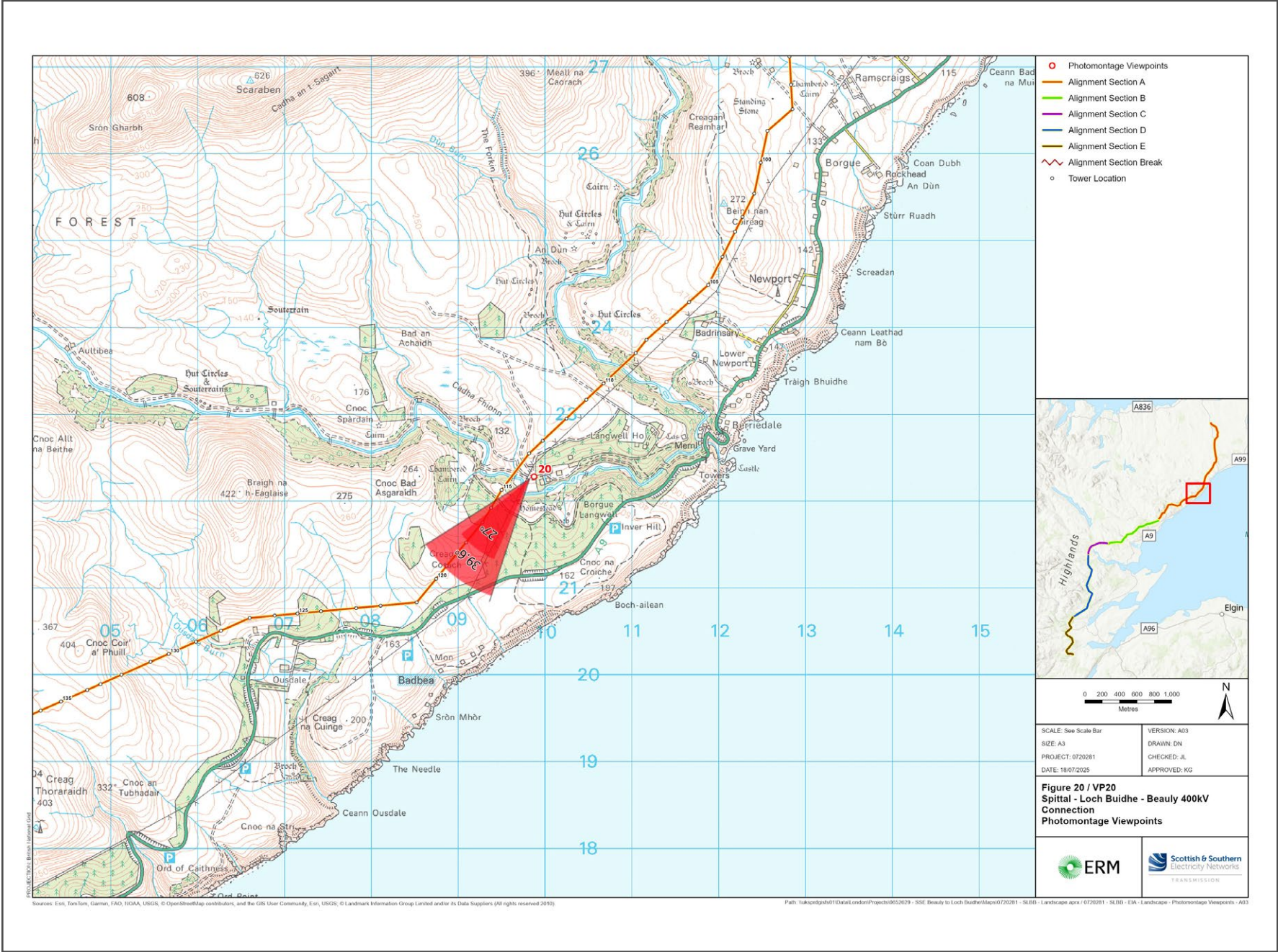


V4b Figure 7- 20a - Viewpoint 20: Langwell



Grid Reference: 309874 922280      Distance to the development: 200m      AOD: 66m      Direction of view: 219°

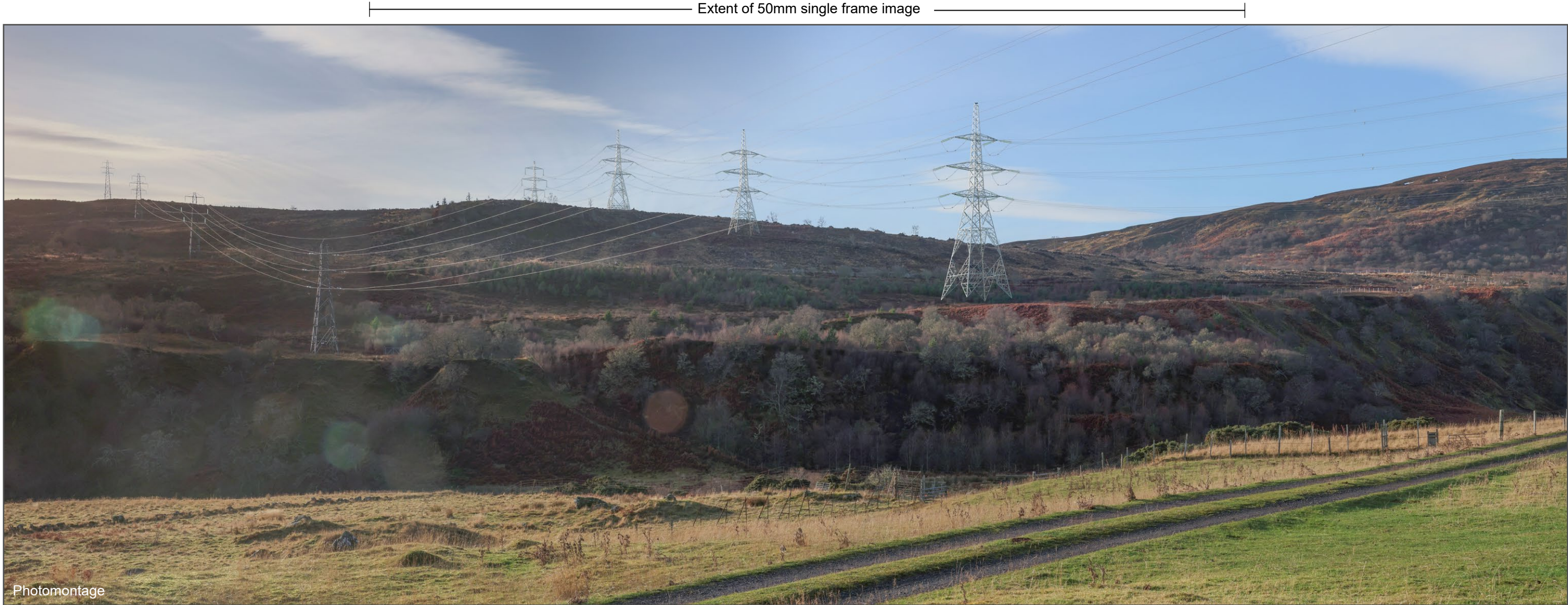
This viewpoint is on an unnamed road, near the Tulloch Langwell heritage site.

Travel south from Berriedale on the A9. At the war memorial on the right, turn right onto a single track road. Continue for 2.2km.

The camera location is near the closed gate, as shown in the adjacent photograph.







**V4b Figure 7- 20b - Viewpoint 20: Langwell**

Distance to the development: 200m    Camera: Canon EOS R5    Focal Length: 50mm vertical (27°) x 28mm horizontal (65.5°)    Camera height: 1.5m    Date: 30/11/2024 12:20

The images contained on this page and the following page are not representative of scale and distance from the actual viewpoint and show the development in its wider landscape context only.

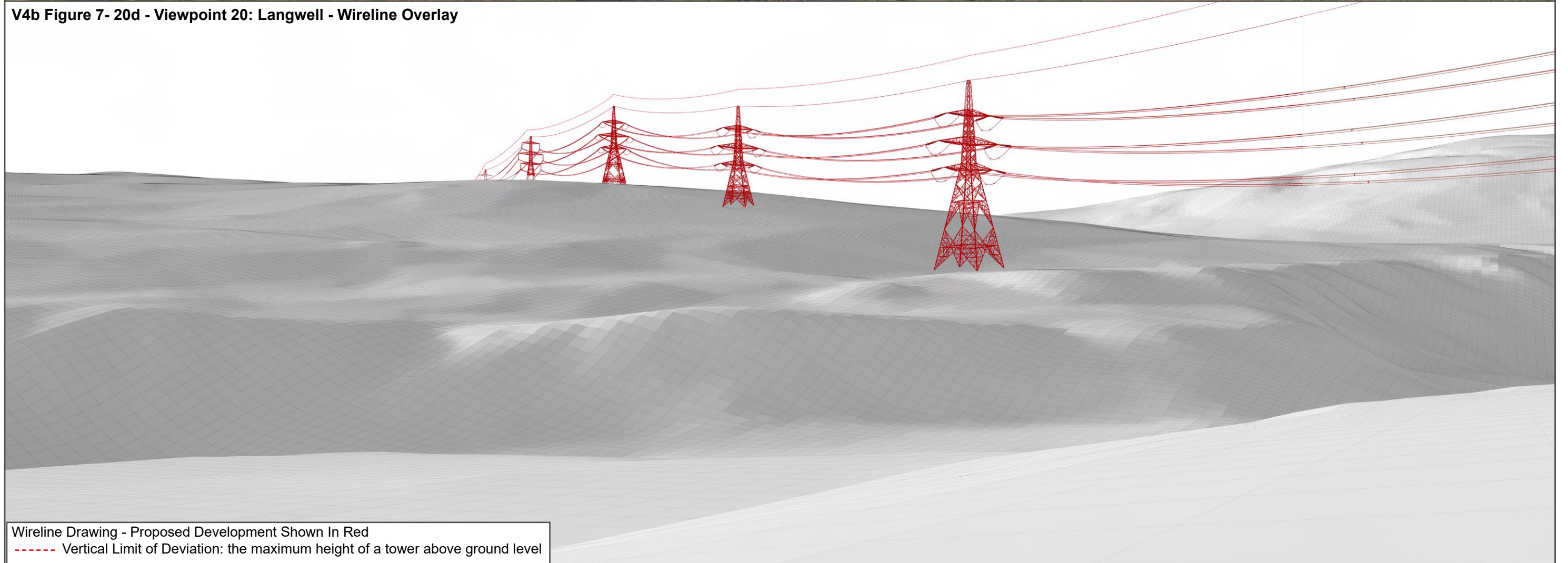
For empirical testing, the wireline image on the next page can be accurately assessed in the field when converted to a transparency. If viewed with one eye at a distance of 300mm from exactly the same location and height as the original camera lens, the image will fit the real landscape cues.





V4b Figure 7- 20c - Viewpoint 20: Langwell - Existing View

V4b Figure 7- 20d - Viewpoint 20: Langwell - Wireline Overlay

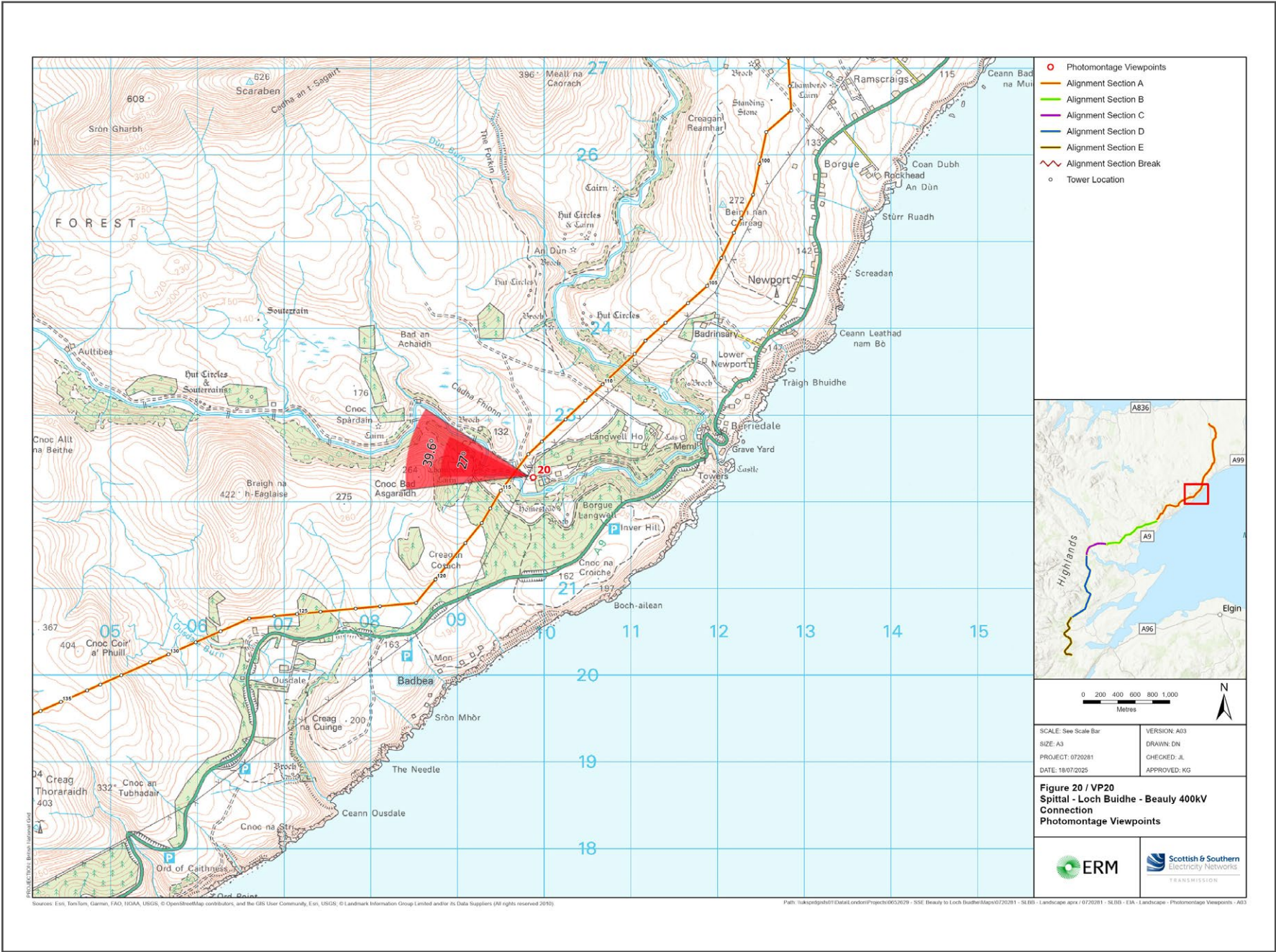


Wireline Drawing - Proposed Development Shown In Red  
 ----- Vertical Limit of Deviation: the maximum height of a tower above ground level



V4b Figure 7- 20a(i) - Viewpoint 20: Langwell

Reproduced from Ordnance Survey digital map data © Crown copyright 2020. All rights reserved. Licence number 100048606



Grid Reference: 309874 922280 Distance to the development: 200m AOD: 66m Direction of view: 284°

This viewpoint is on an unnamed road, near the Tulloch Langwell heritage site.

Travel south from Berriedale on the A9. At the war memorial on the right, turn right onto a single track road. Continue for 2.2km.

The camera location is near the closed gate, as shown in the adjacent photograph.



Extent of 50mm single frame image



**V4b Figure 7- 20b(i) - Viewpoint 20: Langwell**

Distance to the development: 200m    Camera: Canon EOS R5    Focal Length: 50mm vertical (27°) x 28mm horizontal (65.5°)    Camera height: 1.5m    Date: 30/11/2024 12:20

The images contained on this page and the following page are not representative of scale and distance from the actual viewpoint and show the development in its wider landscape context only.

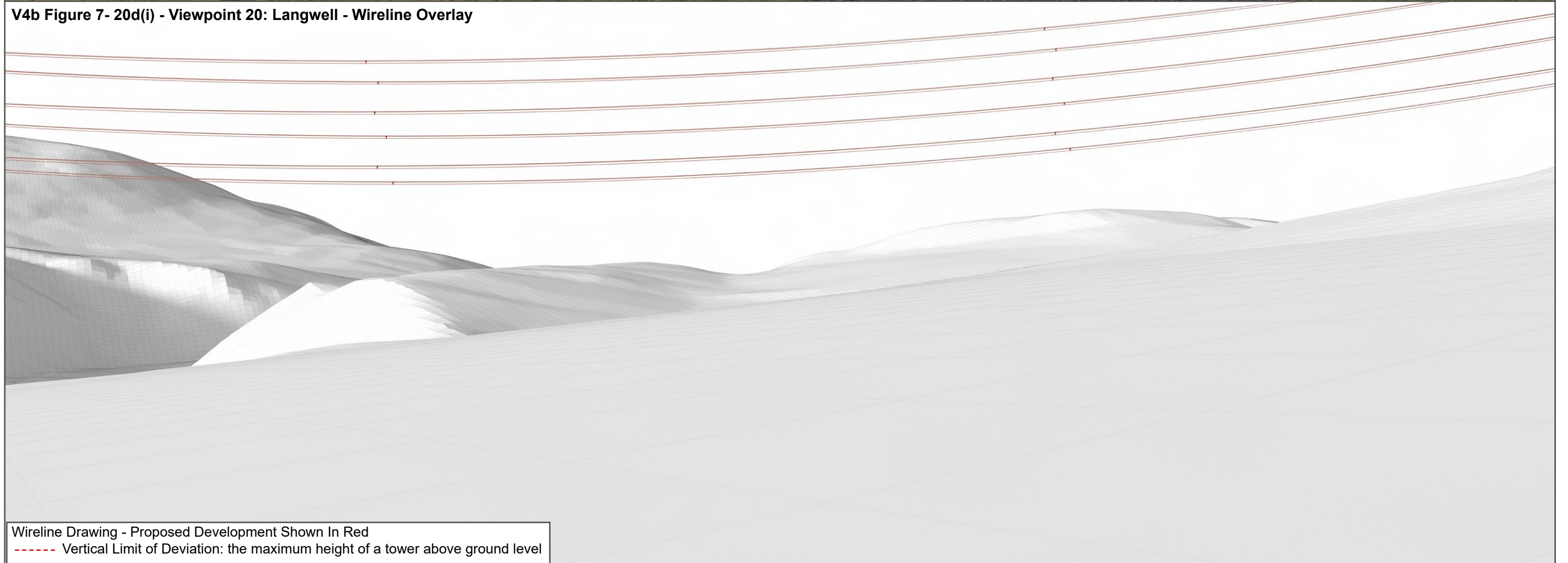
For empirical testing, the wireline image on the next page can be accurately assessed in the field when converted to a transparency. If viewed with one eye at a distance of 300mm from exactly the same location and height as the original camera lens, the image will fit the real landscape cues.





V4b Figure 7- 20c(i) - Viewpoint 20: Langwell - Existing View

V4b Figure 7- 20d(i) - Viewpoint 20: Langwell - Wireline Overlay



Wireline Drawing - Proposed Development Shown In Red  
 ----- Vertical Limit of Deviation: the maximum height of a tower above ground level



V4b Figure 7- 20a(ii) - Viewpoint 20: Langwell

Reproduced from Ordnance Survey digital map data © Crown copyright 2020. All rights reserved. Licence number 100048606



Grid Reference: 309874 922280 Distance to the development: 200m AOD: 66m Direction of view: 350°

This viewpoint is on an unnamed road, near the Tulloch Langwell heritage site.

Travel south from Berriedale on the A9. At the war memorial on the right, turn right onto a single track road. Continue for 2.2km.

The camera location is near the closed gate, as shown in the adjacent photograph.





Extent of 50mm single frame image



V4b Figure 7- 20b(ii) - Viewpoint 20: Langwell

Distance to the development: 200m    Camera: Canon EOS R5    Focal Length: 50mm vertical (27°) x 28mm horizontal (65.5°)    Camera height: 1.5m    Date: 30/11/2024 12:20

The images contained on this page and the following page are not representative of scale and distance from the actual viewpoint and show the development in its wider landscape context only.

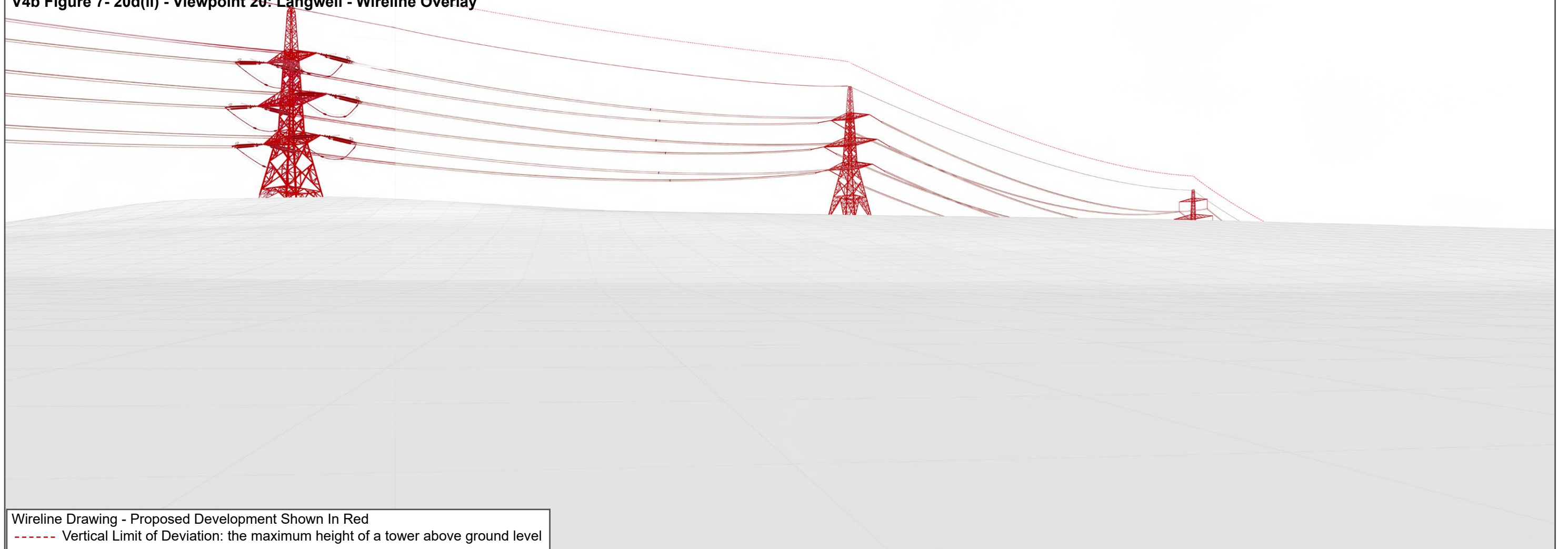
For empirical testing, the wireline image on the next page can be accurately assessed in the field when converted to a transparency. If viewed with one eye at a distance of 300mm from exactly the same location and height as the original camera lens, the image will fit the real landscape cues.





V4b Figure 7- 20c(ii) - Viewpoint 20: Langwell - Existing View

V4b Figure 7- 20d(ii) - Viewpoint 20: Langwell - Wireline Overlay



Wireline Drawing - Proposed Development Shown In Red  
 ----- Vertical Limit of Deviation: the maximum height of a tower above ground level





**V4b Figure 7- 20b(iii) - Viewpoint 20: Langwell**

Distance to the development: 200m

Camera: Canon EOS R5

Focal Length: 50mm

Camera height: 1.5m

Date: 30/11/2024 12:20

This image should be viewed at a comfortable arms length (approx. 500mm)





**V4b Figure 7- 20b(iv) - Viewpoint 20: Langwell**

Distance to the development: 200m

Camera: Canon EOS R5

Focal Length: 75mm

Camera height: 1.5m

Date: 30/11/2024 12:20

This image should be viewed at a comfortable arms length (approx. 500mm)