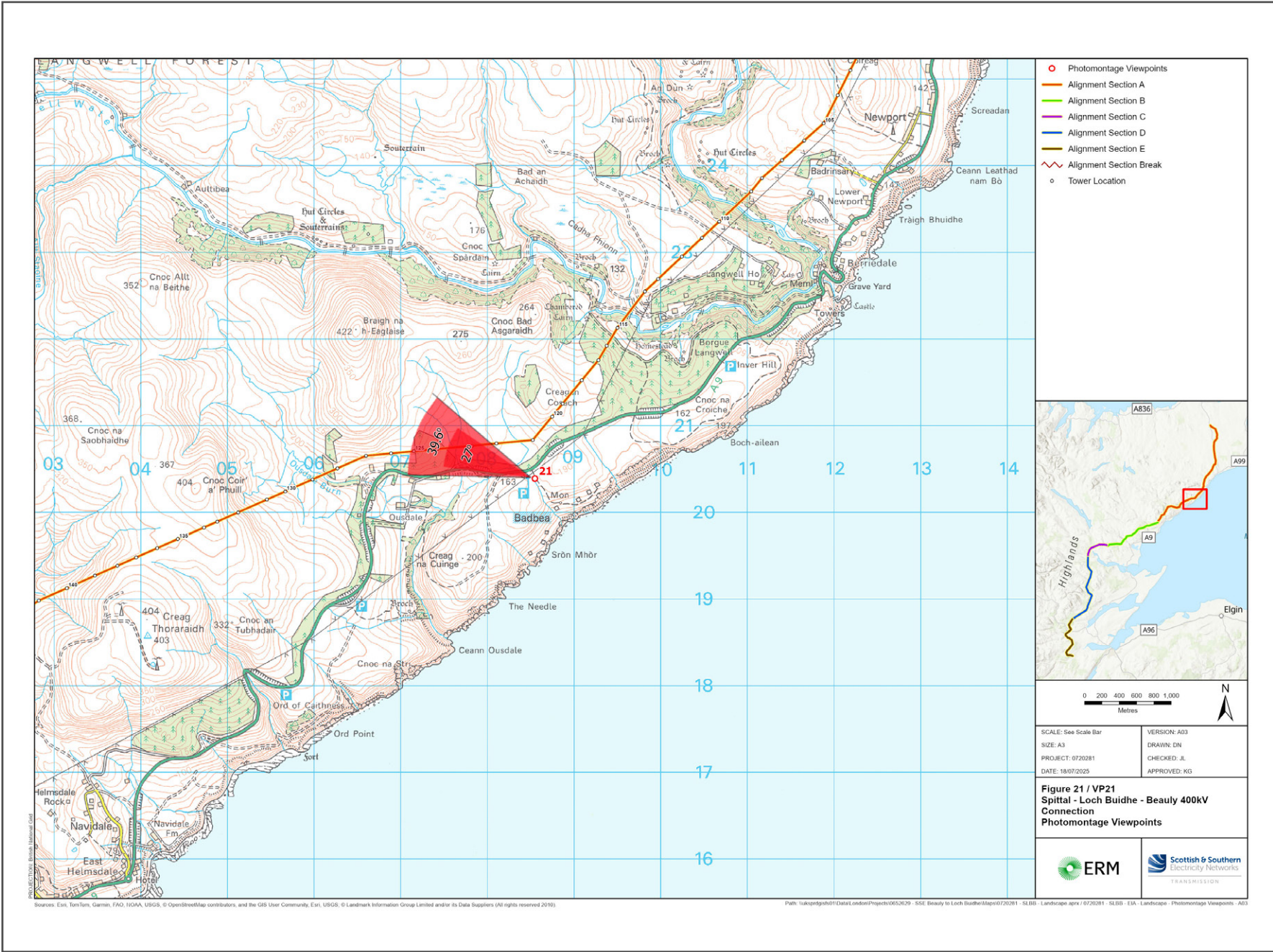


V4b Figure 7 - 21a - Viewpoint 21: A9 (T) Badbea Historical Village

Reproduced from Ordnance Survey digital map data © Crown copyright 2020. All rights reserved. Licence number 100048606



Grid Reference: 308549 920388 Distance to the development: 440m AOD: 170m Direction of view: 273°

This viewpoint is near Badbea Historical Village, off the A9.

Travel south from Berriedale on the A9. Continue for approximately 4km and turn into the parking area on the left. Walk through the gate, and follow the path for 80m.

The camera location is on the path, as shown in the adjacent photograph.



Extent of 50mm single frame image



Photomontage

**V4b Figure 7 - 21b -  
Viewpoint 21: A9 (T) Badbea Historical Village**

Distance to the development: 440m    Camera: Canon EOS R5    Focal Length: 50mm vertical (27°) x 28mm horizontal (65.5°)    Camera height: 1.5m    Date: 29/11/2024 12:45

The images contained on this page and the following page are not representative of scale and distance from the actual viewpoint and show the development in its wider landscape context only.

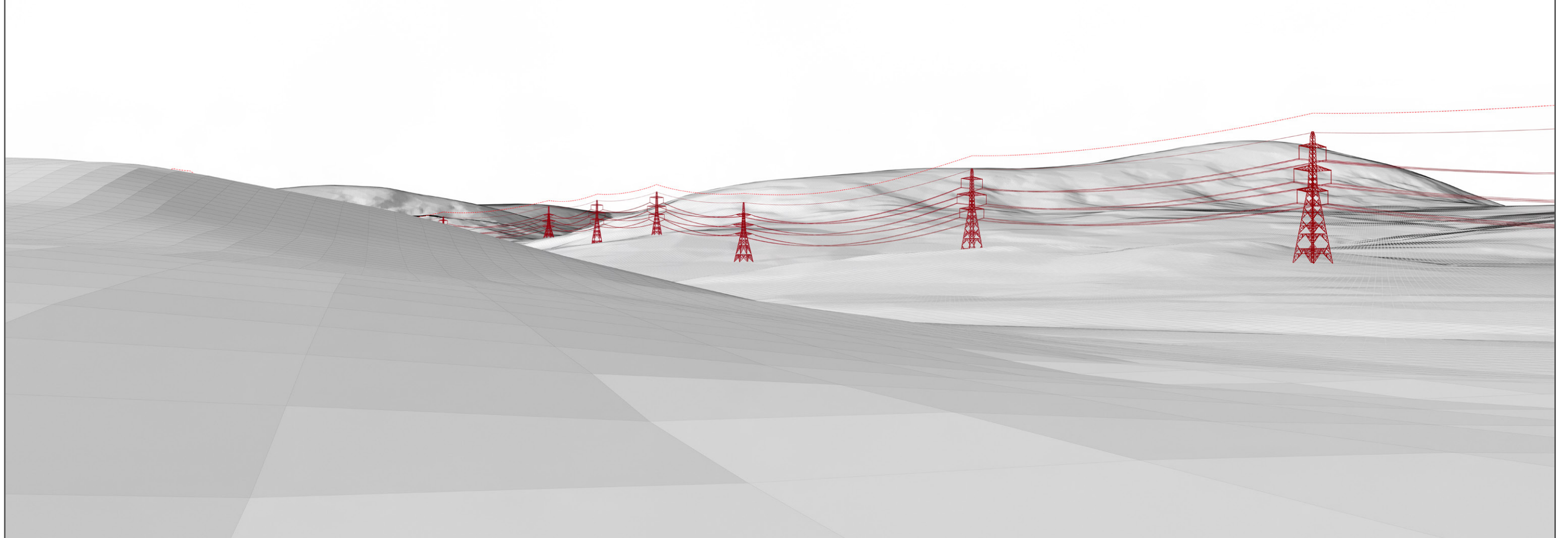
For empirical testing, the wireline image on the next page can be accurately assessed in the field when converted to a transparency. If viewed with one eye at a distance of 300mm from exactly the same location and height as the original camera lens, the image will fit the real landscape cues.





V4b Figure 7 - 21c - Viewpoint 21: A9 (T) Badbea Historical Village - Existing View

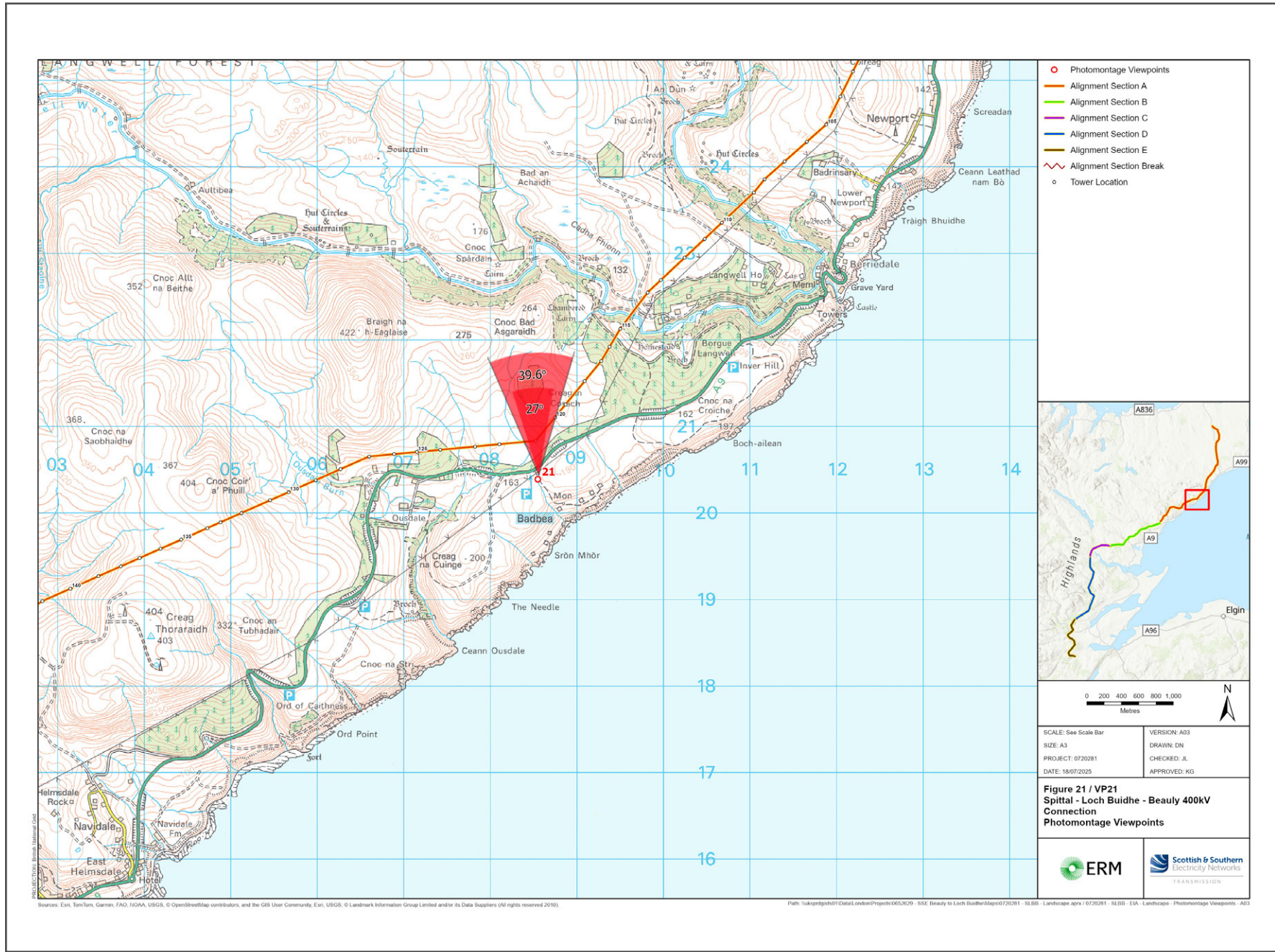
V4b Figure 7 - 21d - Viewpoint 21: A9 (T) Badbea Historical Village - Wireline Overlay





V4b Figure 7 - 21a(i) - Viewpoint 21: A9 (T) Badbea Historical Village

Reproduced from Ordnance Survey digital map data © Crown copyright 2020. All rights reserved. Licence number 100048606



Grid Reference: 308549 920388      Distance to the development: 440m      AOD: 170m      Direction of view: 339°

This viewpoint is near Badbea Historical Village, off the A9.

Travel south from Berriedale on the A9. Continue for approximately 4km and turn into the parking area on the left. Walk through the gate, and follow the path for 80m.

The camera location is on the path, as shown in the adjacent photograph.



Extent of 50mm single frame image



Photomontage

**V4b Figure 7 - 21b(i) -  
Viewpoint 21: A9 (T) Badbea Historical Village**

Distance to the development: 440m    Camera: Canon EOS R5    Focal Length: 50mm vertical (27°) x 28mm horizontal (65.5°)    Camera height: 1.5m    Date: 29/11/2024 12:45

The images contained on this page and the following page are not representative of scale and distance from the actual viewpoint and show the development in its wider landscape context only.

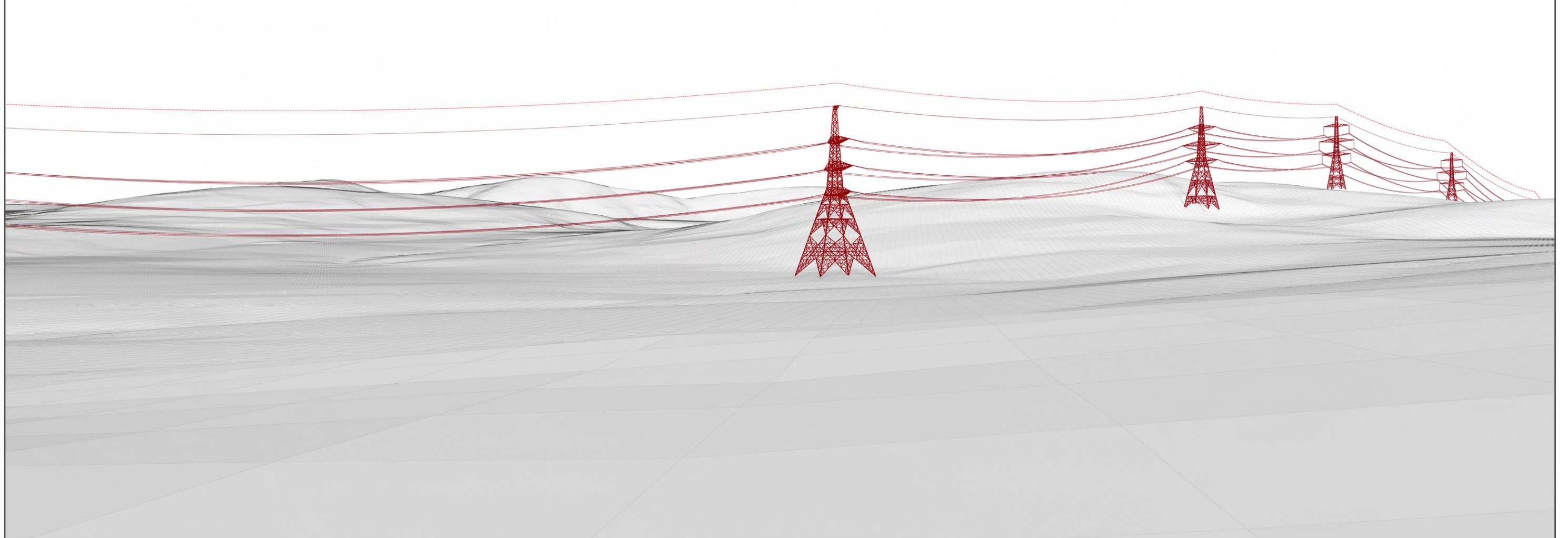
For empirical testing, the wireline image on the next page can be accurately assessed in the field when converted to a transparency. If viewed with one eye at a distance of 300mm from exactly the same location and height as the original camera lens, the image will fit the real landscape cues.





V4b Figure 7 - 21c(i) - Viewpoint 22: A9 (T) Badbea Historical Village - Existing View

V4b Figure 7 - 21d(i) - Viewpoint 22: A9 (T) Badbea Historical Village - Wireline Overlay







**V4b Figure 7 - 21b(ii) -**  
**Viewpoint 21: A9 (T) Badbea Historical Village**

This image should be viewed at a comfortable arms length (approx. 500mm)

Distance to the development: 440m

Camera: Canon EOS R5

Focal Length: 50mm

Camera height: 1.5m

Date: 29/11/2024 12:45





**V4b Figure 7 - 21b(iii) -  
Viewpoint 21: A9 (T) Badbea Historical Village**

This image should be viewed at a comfortable arms length (approx. 500mm)

Distance to the development: 440m

Camera: Canon EOS R5

Focal Length: 75mm

Camera height: 1.5m

Date: 29/11/2024 12:45