

Grid Reference: 293394 913764      Distance to the development: 215m      AOD: 162m      Direction of view: 27.5°

This viewpoint is on an unnamed road in Glen Loth.

Travel north on the A9 from Brora for 7km, then turn left into Glen Loth. Continue for approximately 4.1km.

The camera location is on the right, about 10 from the roadside, as shown in the adjacent photograph.



Extent of 50mm single frame image



Photomontage

**V4b Figure 7- 30b - Viewpoint 30: Glen Loth (south)** Distance to the development: 215m Camera: Canon EOS R5 Focal Length: 50mm vertical (27°) x 28mm horizontal (65.5°) Camera height: 1.5m Date: 13/02/2024 15:35

The images contained on this page and the following page are not representative of scale and distance from the actual viewpoint and show the development in its wider landscape context only.

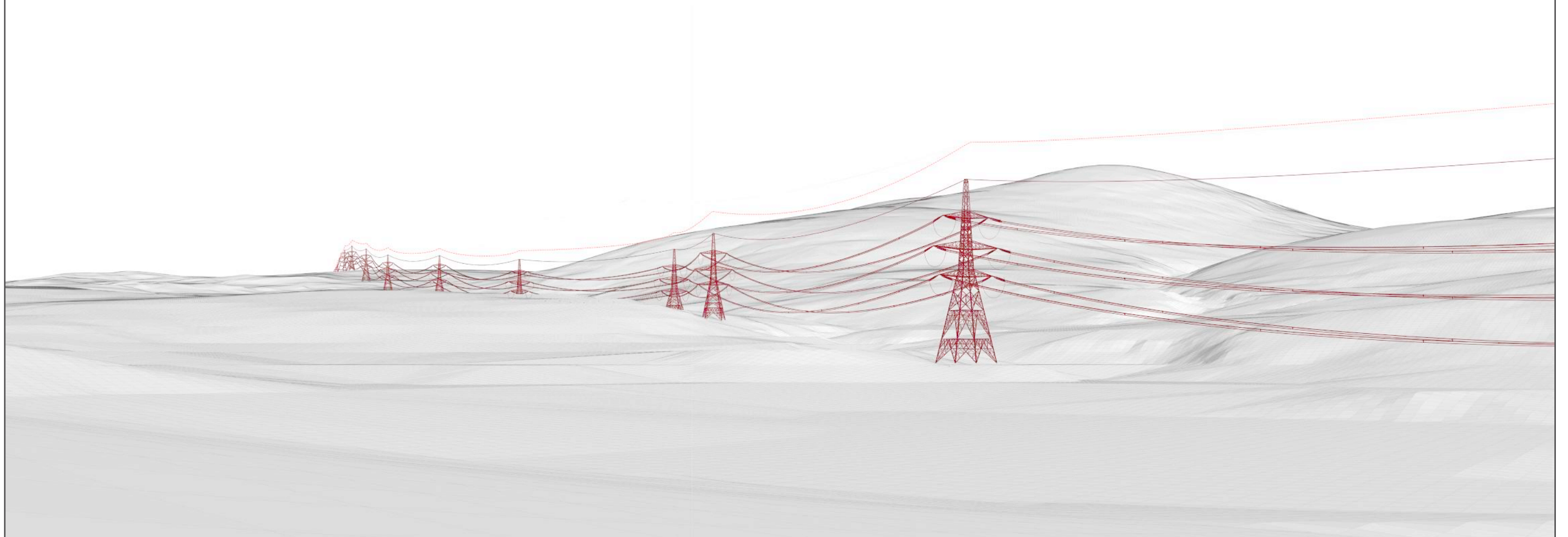
For empirical testing, the wireline image on the next page can be accurately assessed in the field when converted to a transparency. If viewed with one eye at a distance of 300mm from exactly the same location and height as the original camera lens, the image will fit the real landscape cues.





V4b Figure 7- 30c - Viewpoint 30: Glen Loth (south) - Existing View

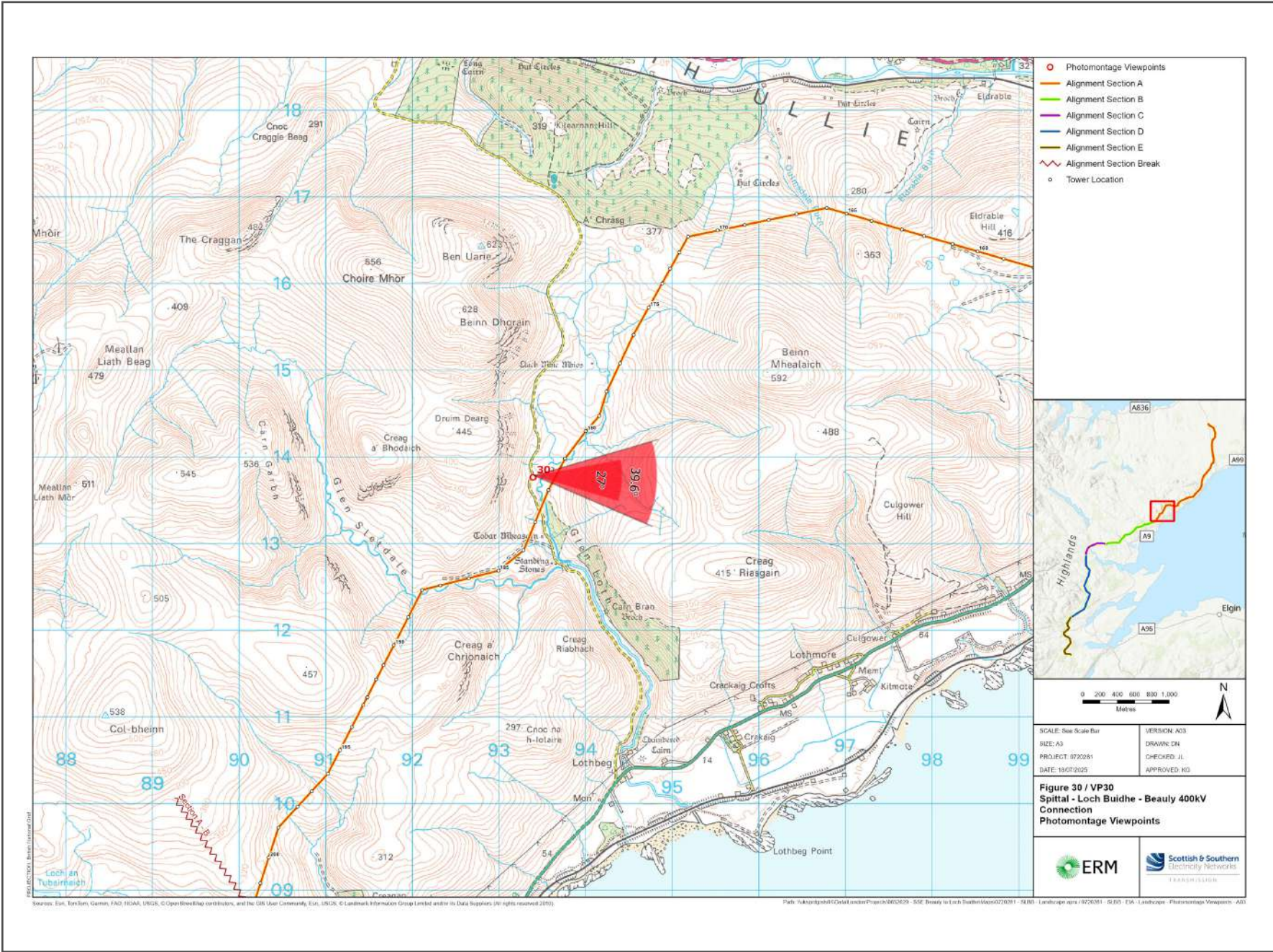
V4b Figure 7- 30d - Viewpoint 30: Glen Loth (south) - Wireline Overlay





V4b Figure 7- 30a(i) - Viewpoint 30: Glen Loth (south)

Reproduced from Ordnance Survey digital map data © Crown copyright 2020. All rights reserved. Licence number 100048606



Grid Reference: 293394 913764 Distance to the development: 215m AOD: 162m Direction of view: 93°

This viewpoint is on an unnamed road in Glen Loth.

Travel north on the A9 from Brora for 7km, then turn left into Glen Loth. Continue for approximately 4.1km.

The camera location is on the right, about 10 from the roadside, as shown in the adjacent photograph.



Extent of 50mm single frame image



Photomontage

**V4b Figure 7- 30b(i) - Viewpoint 30: Glen Loth (south)** Distance to the development: 215m Camera: Canon EOS R5 Focal Length: 50mm vertical (27°) x 28mm horizontal (65.5°) Camera height: 1.5m Date: 13/02/2024 15:35

The images contained on this page and the following page are not representative of scale and distance from the actual viewpoint and show the development in its wider landscape context only.

For empirical testing, the wireline image on the next page can be accurately assessed in the field when converted to a transparency. If viewed with one eye at a distance of 300mm from exactly the same location and height as the original camera lens, the image will fit the real landscape cues.





V4b Figure 7- 30c(i) - Viewpoint 30: Glen Loth (south) - Existing View

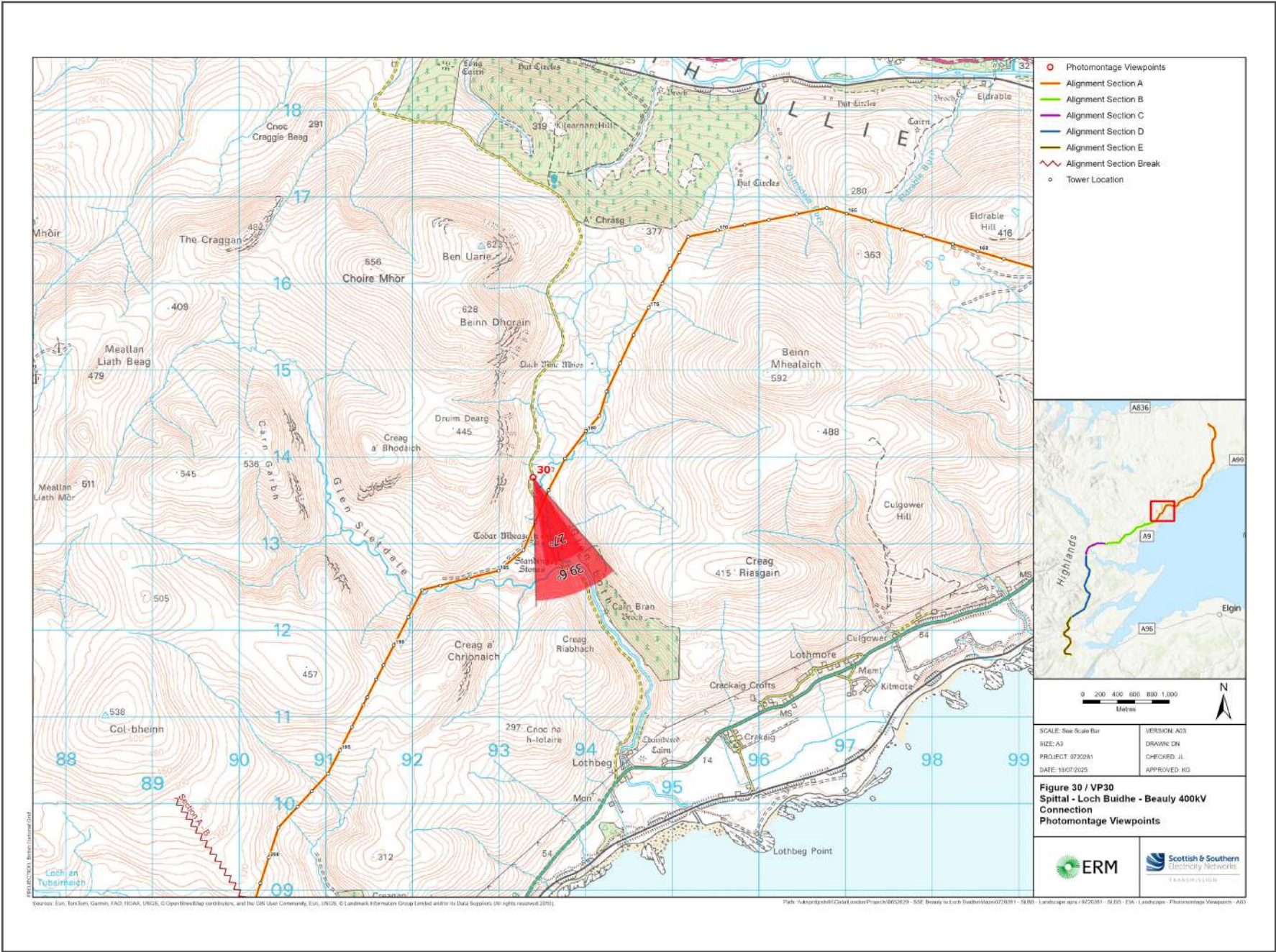


V4b Figure 7- 30d(i) - Viewpoint 30: Glen Loth (south) - Wireline Overlay



V4b Figure 7- 30a(ii) - Viewpoint 30: Glen Loth (south)

Reproduced from Ordnance Survey digital map data © Crown copyright 2020. All rights reserved. Licence number 100048606



Grid Reference: 293394 913764 Distance to the development: 215m AOD: 162m Direction of view: 158.5°

This viewpoint is on an unnamed road in Glen Loth.

Travel north on the A9 from Brora for 7km, then turn left into Glen Loth. Continue for approximately 4.1km.

The camera location is on the right, about 10 from the roadside, as shown in the adjacent photograph.



Extent of 50mm single frame image



Photomontage

**V4b Figure 7- 30b(ii) - Viewpoint 30: Glen Loth (south)** Distance to the development: 215m Camera: Canon EOS R5 Focal Length: 50mm vertical (27°) x 28mm horizontal (65.5°) Camera height: 1.5m Date: 13/02/2024 15:35

The images contained on this page and the following page are not representative of scale and distance from the actual viewpoint and show the development in its wider landscape context only.

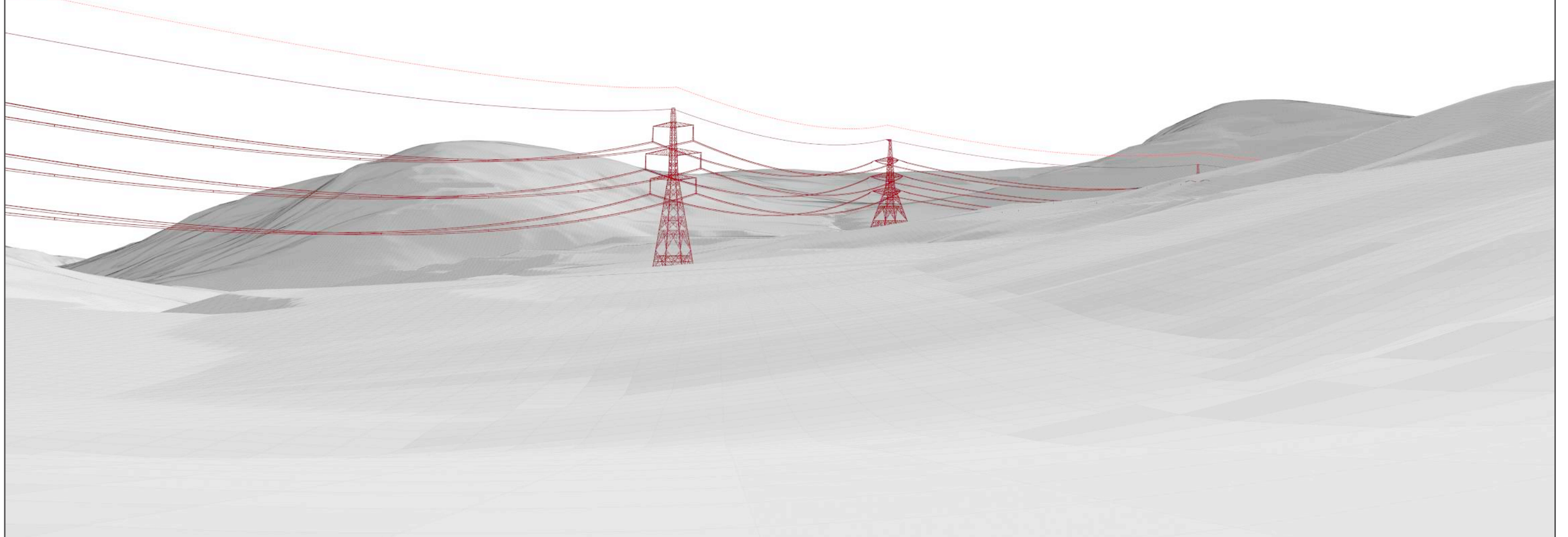
For empirical testing, the wireline image on the next page can be accurately assessed in the field when converted to a transparency. If viewed with one eye at a distance of 300mm from exactly the same location and height as the original camera lens, the image will fit the real landscape cues.





V4b Figure 7- 30c(ii) - Viewpoint 30: Glen Loth (south) - Existing View

V4b Figure 7- 30d(ii) - Viewpoint 30: Glen Loth (south) - Wireline Overlay







**V4b Figure 7- 30b(iii) - Viewpoint 30: Glen Loth (south)**

Distance to the development: 215m

Camera: Canon EOS R5

Focal Length: 50mm

Camera height: 1.5m

Date: 13/02/2024 15:35

This image should be viewed at a comfortable arms length (approx. 500mm)





**V4b Figure 7- 30b(iv) - Viewpoint 30: Glen Loth (south)**

Distance to the development: 215m

Camera: Canon EOS R5

Focal Length: 75mm

Camera height: 1.5m

Date: 13/02/2024 15:35

This image should be viewed at a comfortable arms length (approx. 500mm)