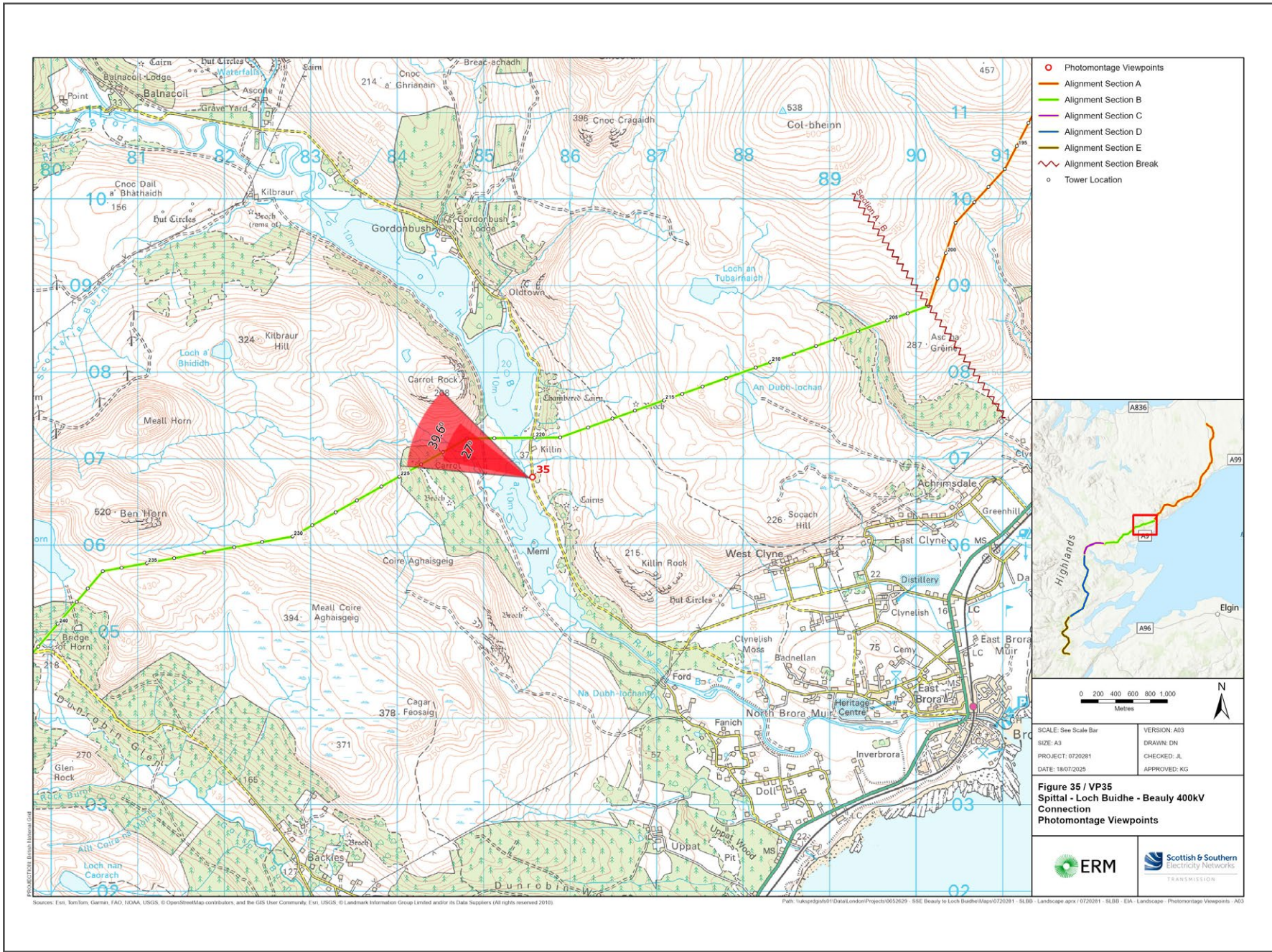


V4b Figure 7- 35a - Viewpoint 35: South of Killin

Reproduced from Ordnance Survey digital map data © Crown copyright 2020. All rights reserved. Licence number 100048606



Grid Reference: 285564 906786 Distance to the development: 450m AOD: 31m Direction of view: 294°

This viewpoint is on an unnamed road on the east shore of Loch Brora.

Travel south on the A9 from Brora and turn right, directly before the bridge at the river Brora towards Brora Heritage Centre and Recreation Area. Continue for approximately 6km.

The camera location is at the north end of the passing place, south of Killin, as shown in the adjacent photograph.

Extent of 50mm single frame image



V4b Figure 7- 35b - Viewpoint 35: South of Killin

Distance to the development: 450m Camera: Canon EOS R5 Focal Length: 50mm vertical (27°) x 28mm horizontal (65.5°) Camera height: 1.5m Date: 13/02/2024 10:25

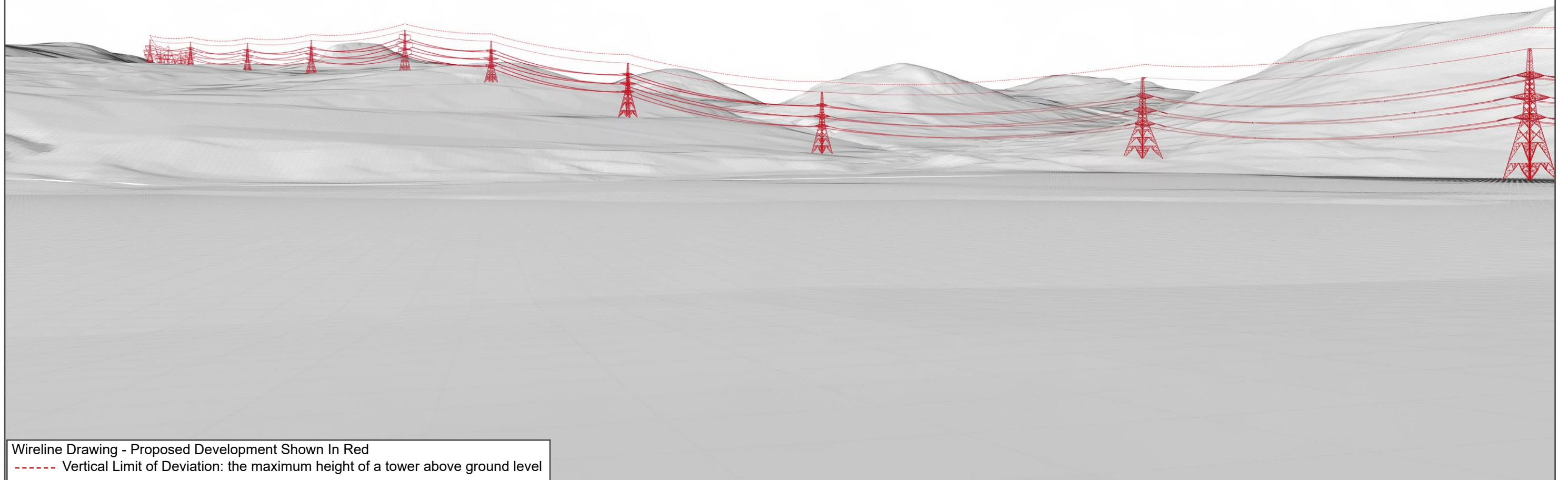
The images contained on this page and the following page are not representative of scale and distance from the actual viewpoint and show the development in its wider landscape context only.

For empirical testing, the wireline image on the next page can be accurately assessed in the field when converted to a transparency. If viewed with one eye at a distance of 300mm from exactly the same location and height as the original camera lens, the image will fit the real landscape cues.



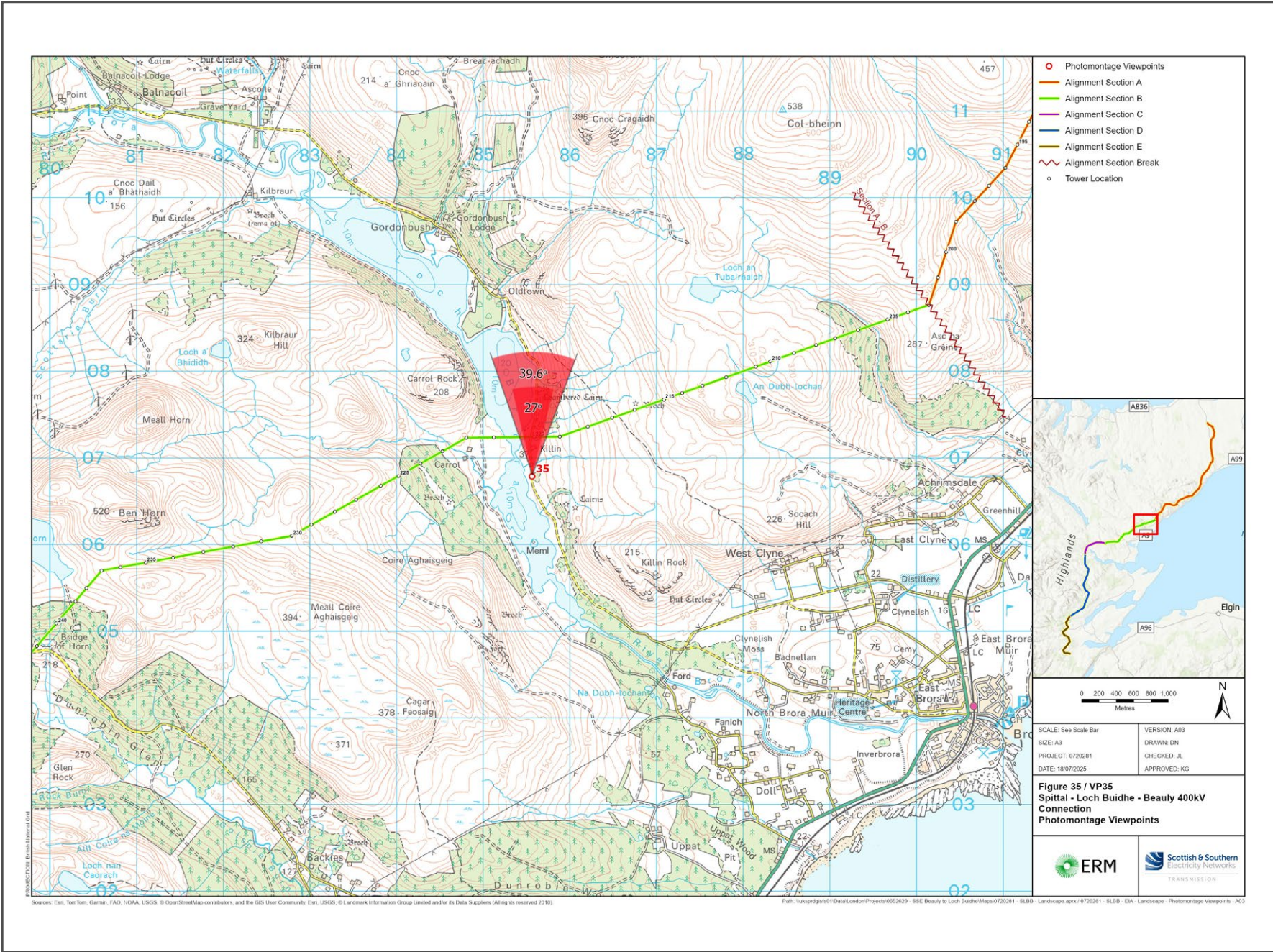
V4b Figure 7- 35c - Viewpoint 35: South of Killin - Existing View

V4b Figure 7- 35d - Viewpoint 35: South of Killin - Wireline Overlay



V4b Figure 7- 35a(i) - Viewpoint 35: South of Killin

Reproduced from Ordnance Survey digital map data © Crown copyright 2020. All rights reserved. Licence number 100048606



Grid Reference: 285564 906786 Distance to the development: 450m AOD: 31m Direction of view: 1°

This viewpoint is on an unnamed road on the east shore of Loch Brora.

Travel south on the A9 from Brora and turn right, directly before the bridge at the river Brora towards Brora Heritage Centre and Recreation Area. Continue for approximately 6km.

The camera location is at the north end of the passing place, South of Killin, as shown in the adjacent photograph.

Extent of 50mm single frame image



V4b Figure 7- 35b(i) - Viewpoint 35: South of Killin

Distance to the development: 450m Camera: Canon EOS R5 Focal Length: 50mm vertical (27°) x 28mm horizontal (65.5°) Camera height: 1.5m Date: 13/02/2024 10:25

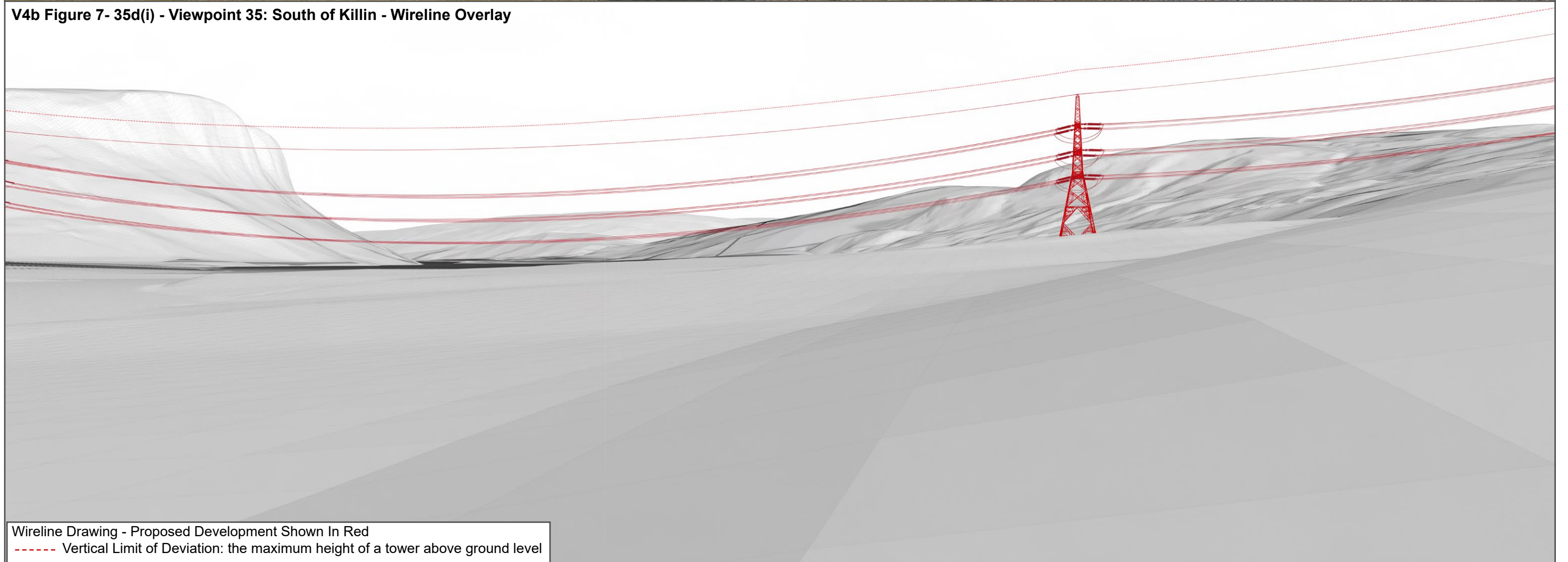
The images contained on this page and the following page are not representative of scale and distance from the actual viewpoint and show the development in its wider landscape context only.

For empirical testing, the wireline image on the next page can be accurately assessed in the field when converted to a transparency. If viewed with one eye at a distance of 300mm from exactly the same location and height as the original camera lens, the image will fit the real landscape cues.



V4b Figure 7- 35c(i) - Viewpoint 35: South of Killin - Existing View

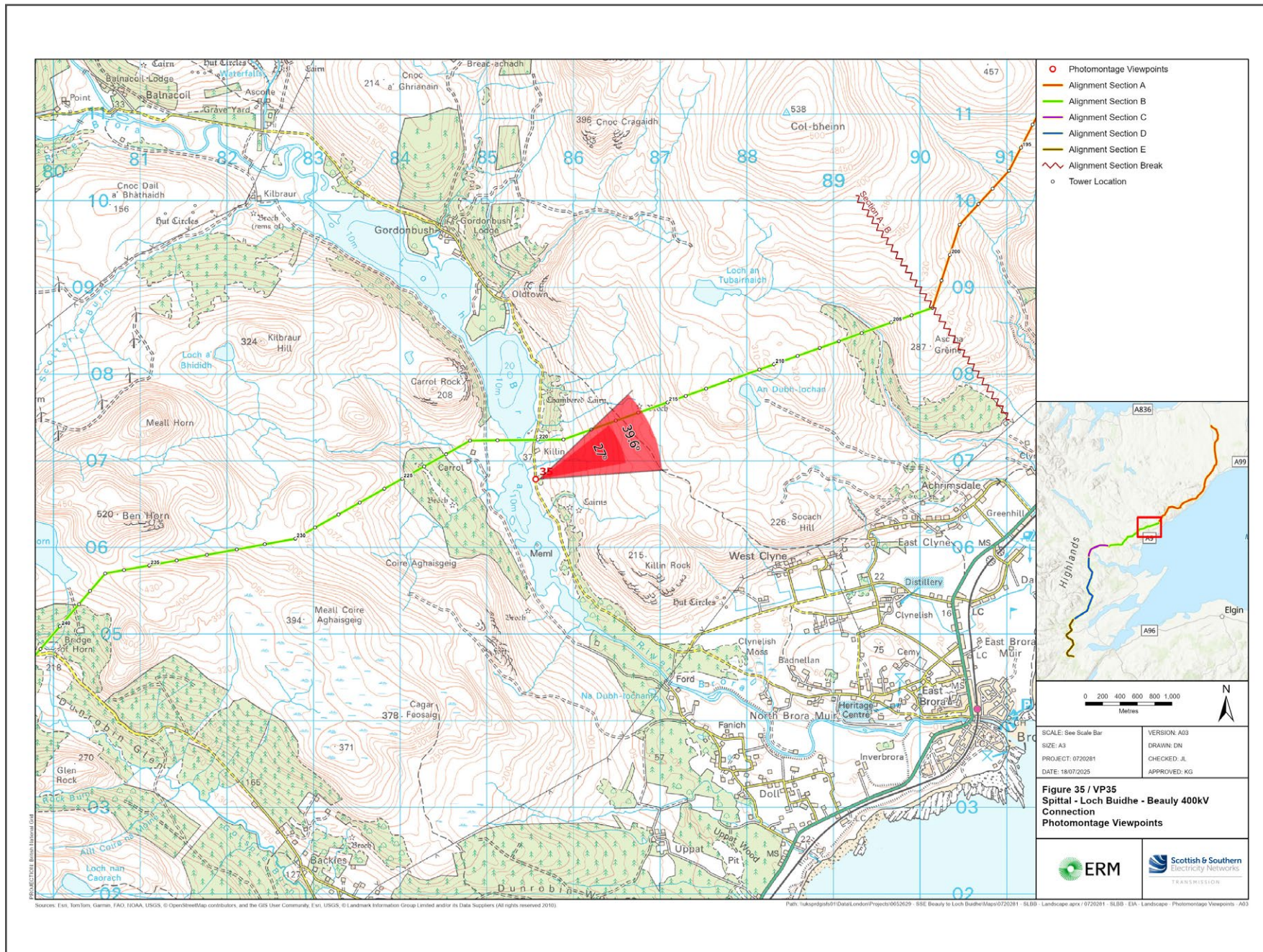
V4b Figure 7- 35d(i) - Viewpoint 35: South of Killin - Wireline Overlay



Wireline Drawing - Proposed Development Shown In Red
 ----- Vertical Limit of Deviation: the maximum height of a tower above ground level

V4b Figure 7- 35a(ii) - Viewpoint 35: South of Killin

Reproduced from Ordnance Survey digital map data © Crown copyright 2020. All rights reserved. Licence number 100048606

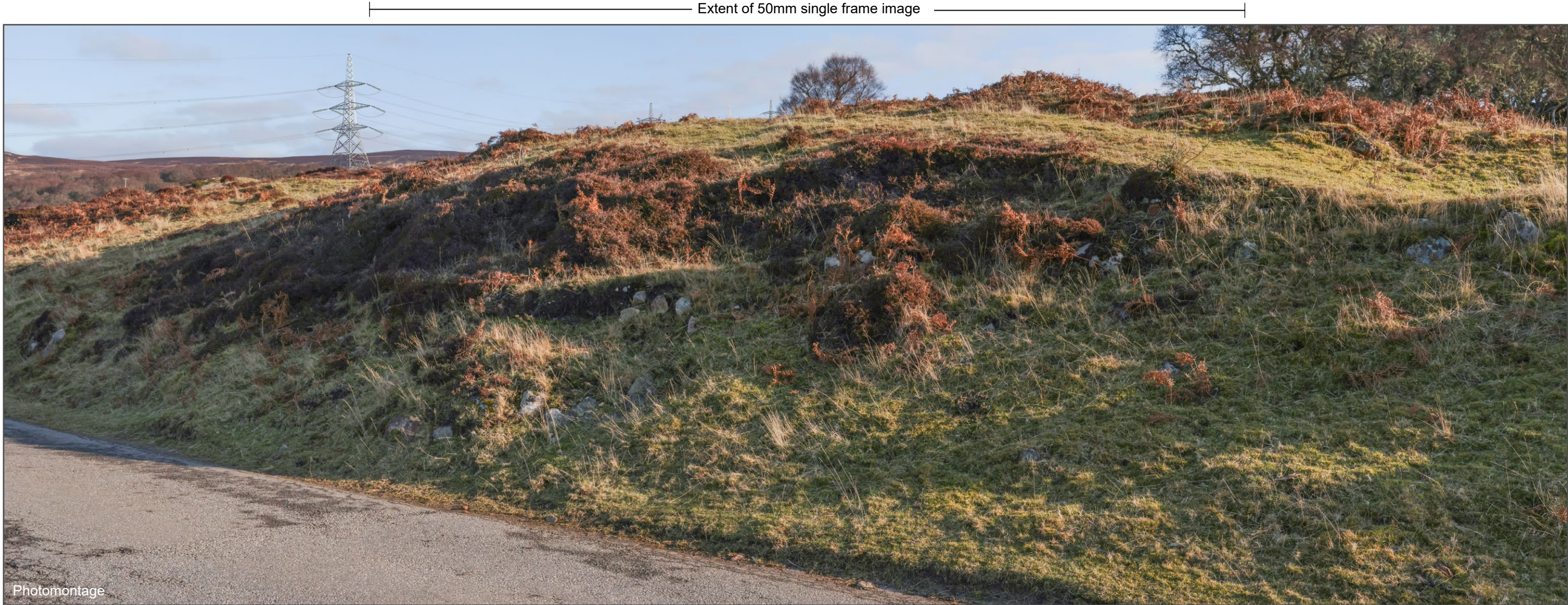


Grid Reference: 285564 906786 Distance to the development: 450m AOD: 31m Direction of view: 67°

This viewpoint is on an unnamed road on the east shore of Loch Brora.

Travel south on the A9 from Brora and turn right, directly before the bridge at the river Brora towards Brora Heritage Centre and Recreation Area. Continue for approximately 6km.

The camera location is at the north end of the passing place, South of Killin, as shown in the adjacent photograph.



V4b Figure 7- 35b(ii) - Viewpoint 35: South of Killin Distance to the development: 450m Camera: Canon EOS R5 Focal Length: 50mm vertical (27°) x 28mm horizontal (65.5°) Camera height: 1.5m Date: 13/02/2024 10:25

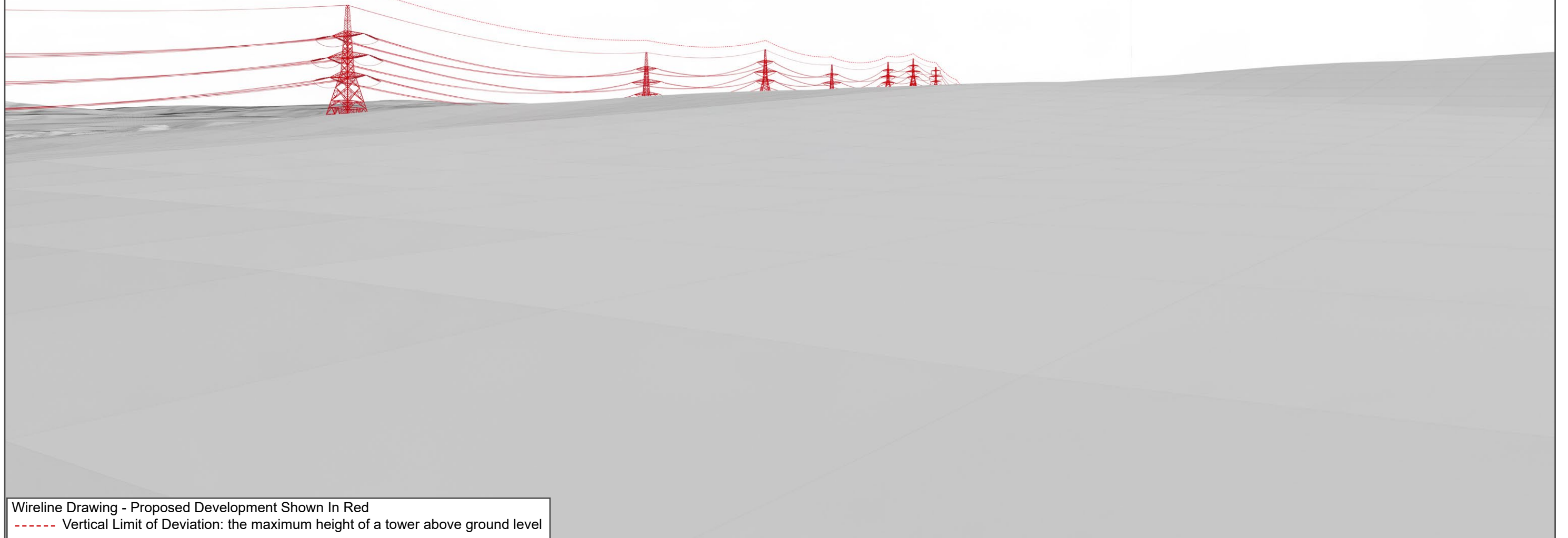
The images contained on this page and the following page are not representative of scale and distance from the actual viewpoint and show the development in its wider landscape context only.

For empirical testing, the wireline image on the next page can be accurately assessed in the field when converted to a transparency. If viewed with one eye at a distance of 300mm from exactly the same location and height as the original camera lens, the image will fit the real landscape cues.



V4b Figure 7- 35c(ii) - Viewpoint 35: South of Killin - Existing View

V4b Figure 7- 35d(ii) - Viewpoint 35: South of Killin - Wireline Overlay





V4b Figure 7- 35b(iii) - Viewpoint 35: South of Killin

Distance to the development: 450m

Camera: Canon EOS R5

Focal Length: 50mm

Camera height: 1.5m

Date: 13/02/2024 10:25

This image should be viewed at a comfortable arms length (approx. 500mm)



V4b Figure 7- 35b(iv) - Viewpoint 35: South of Killin

Distance to the development: 450m

Camera: Canon EOS R5

Focal Length: 75mm

Camera height: 1.5m

Date: 13/02/2024 10:25

This image should be viewed at a comfortable arms length (approx. 500mm)