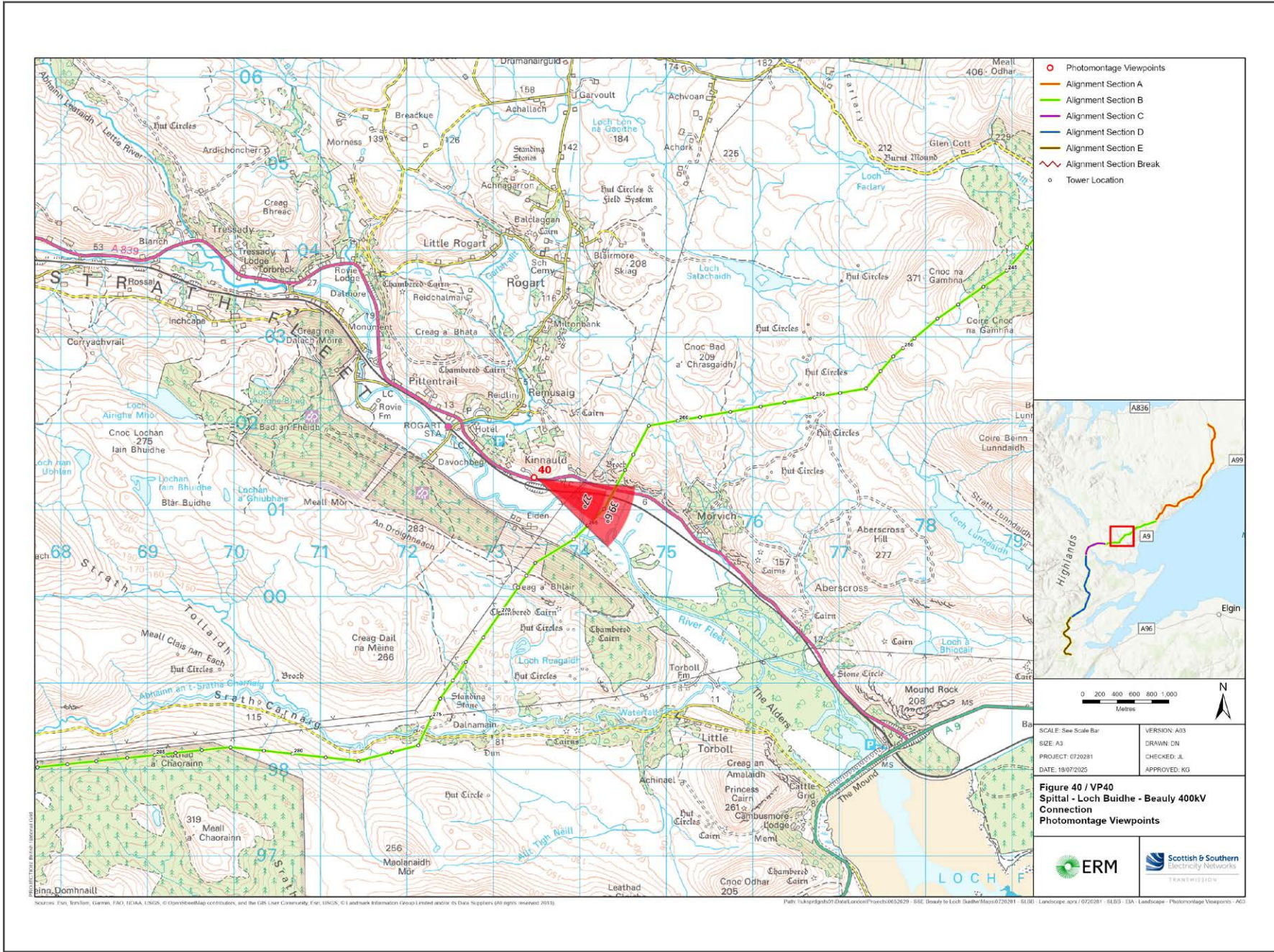


V4b Figure 7-40a Viewpoint 40 - A839 Rogart

Reproduced from Ordnance Survey digital map data © Crown copyright 2020. All rights reserved. Licence number 100048606



Grid Reference: 273472 901374 Distance to development : 825m AOD: 10m Direction of view: 115°

This viewpoint is located on roadside on A839.

From Rogart train station, head north-east towards A839 and turn right onto A839.

After 1126 meters turn left. you will arrive at the viewpoint location as shown in the adjacent photograph.



Extent of 50mm single frame image



Photomontage

**V4b Figure 7-40b Viewpoint 40 - A839 Rogart** Distance to development: 825m Camera: Canon EOS R5 Focal Length: 50mm vertical (27°) x 28mm horizontal (65.5°) Camera height: 1.5m Date: 08/11/2024 15:00

The images contained on this page and the following page are not representative of scale and distance from the actual viewpoint and show the development in its wider landscape context only.

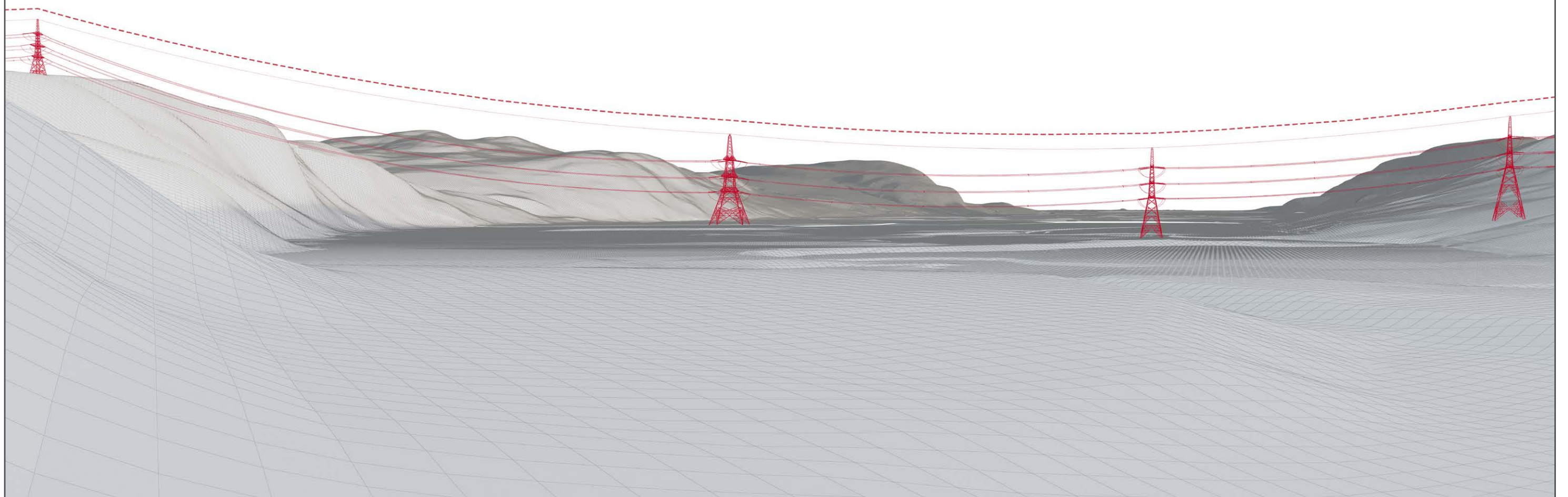
For empirical testing, the wireline image on the next page can be accurately assessed in the field when converted to a transparency. If viewed with one eye at a distance of 300mm from exactly the same location and height as the original camera lens, the image will fit the real landscape cues.





V4b Figure 7-40c Viewpoint 40 - A839 Rogart - Existing View

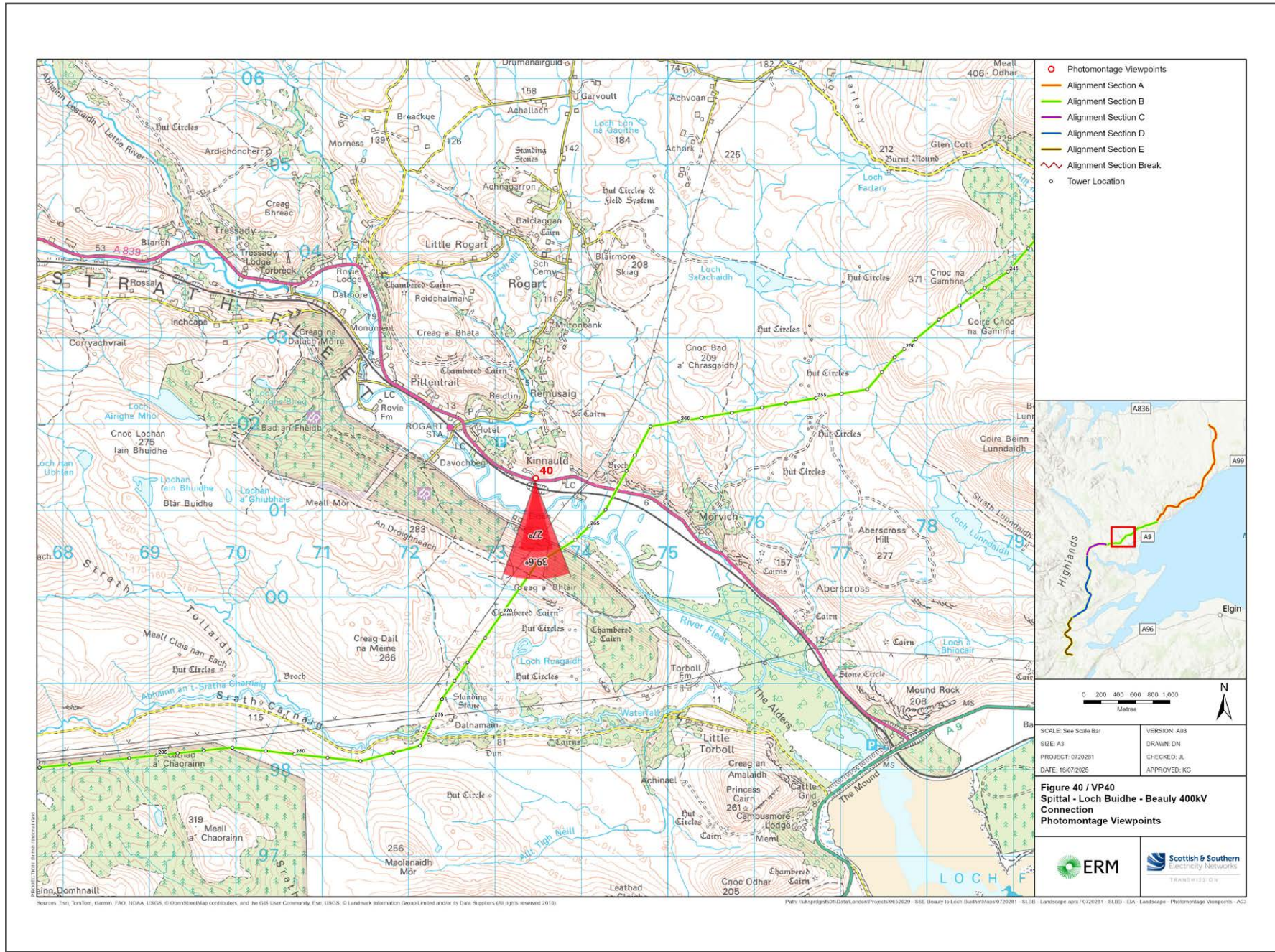
V4b Figure 7-40d Viewpoint 40 - A839 Rogart - Wireline Overlay





V4b Figure 7-40a(i) Viewpoint 40 - A839 Rogart

Reproduced from Ordnance Survey digital map data © Crown copyright 2020. All rights reserved. Licence number 100048606



Grid Reference: 273472 901374      Distance to development : 825m      AOD: 10m      Direction of view: 180°

This viewpoint is located on roadside on A839.

From Rogart train station, head north-east towards A839 and turn right onto A839.

After 1126 meters turn left. you will arrive at the viewpoint location as shown in the adjacent photograph.



Extent of 50mm single frame image



**V4b Figure 7-40b(i) Viewpoint 40 - A839 Rogart**

Distance to development: 825m      Camera: Canon EOS R5      Focal Length: 50mm vertical (27°) x 28mm horizontal (65.5°)      Camera height: 1.5m      Date: 08/11/2024 15:00

The images contained on this page and the following page are not representative of scale and distance from the actual viewpoint and show the development in its wider landscape context only.

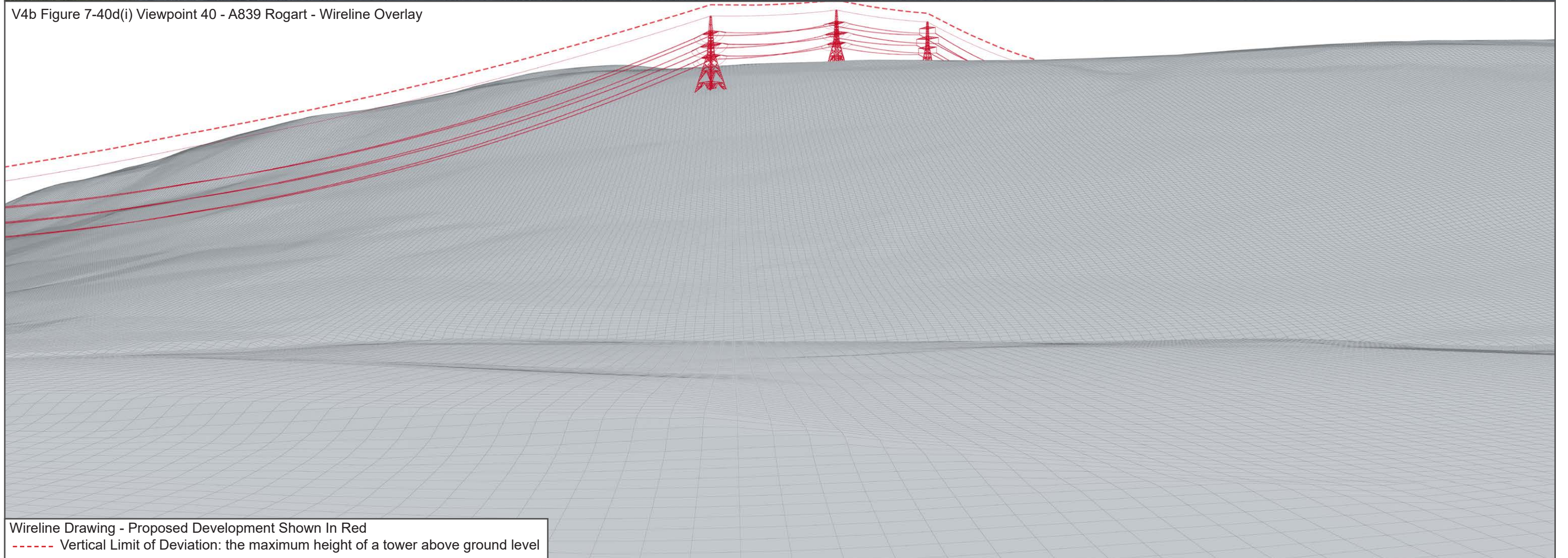
For empirical testing, the wireline image on the next page can be accurately assessed in the field when converted to a transparency. If viewed with one eye at a distance of 300mm from exactly the same location and height as the original camera lens, the image will fit the real landscape cues.





V4b Figure 7-40c(i) Viewpoint 40 - A839 Rogart - Existing View

V4b Figure 7-40d(i) Viewpoint 40 - A839 Rogart - Wireline Overlay



Wireline Drawing - Proposed Development Shown In Red  
 ----- Vertical Limit of Deviation: the maximum height of a tower above ground level





**V4b Figure 7-40b(ii) Viewpoint 40 - A839 Rogart**

Distance to development: 825m

Camera: Canon EOS R5

Focal Length: 50mm

Camera height: 1.5m

Date: 08/11/2024 15:00

This image should be viewed at a comfortable arms length (approx. 500mm)





**V4b Figure 7-40b(iii) Viewpoint 40 - A839 Rogart**

Distance to development: 825m    Camera: Canon EOS R5    Focal Length: 75mm    Camera height: 1.5m    Date: 08/11/2024 15:00

This image should be viewed at a comfortable arms length (approx. 500mm)