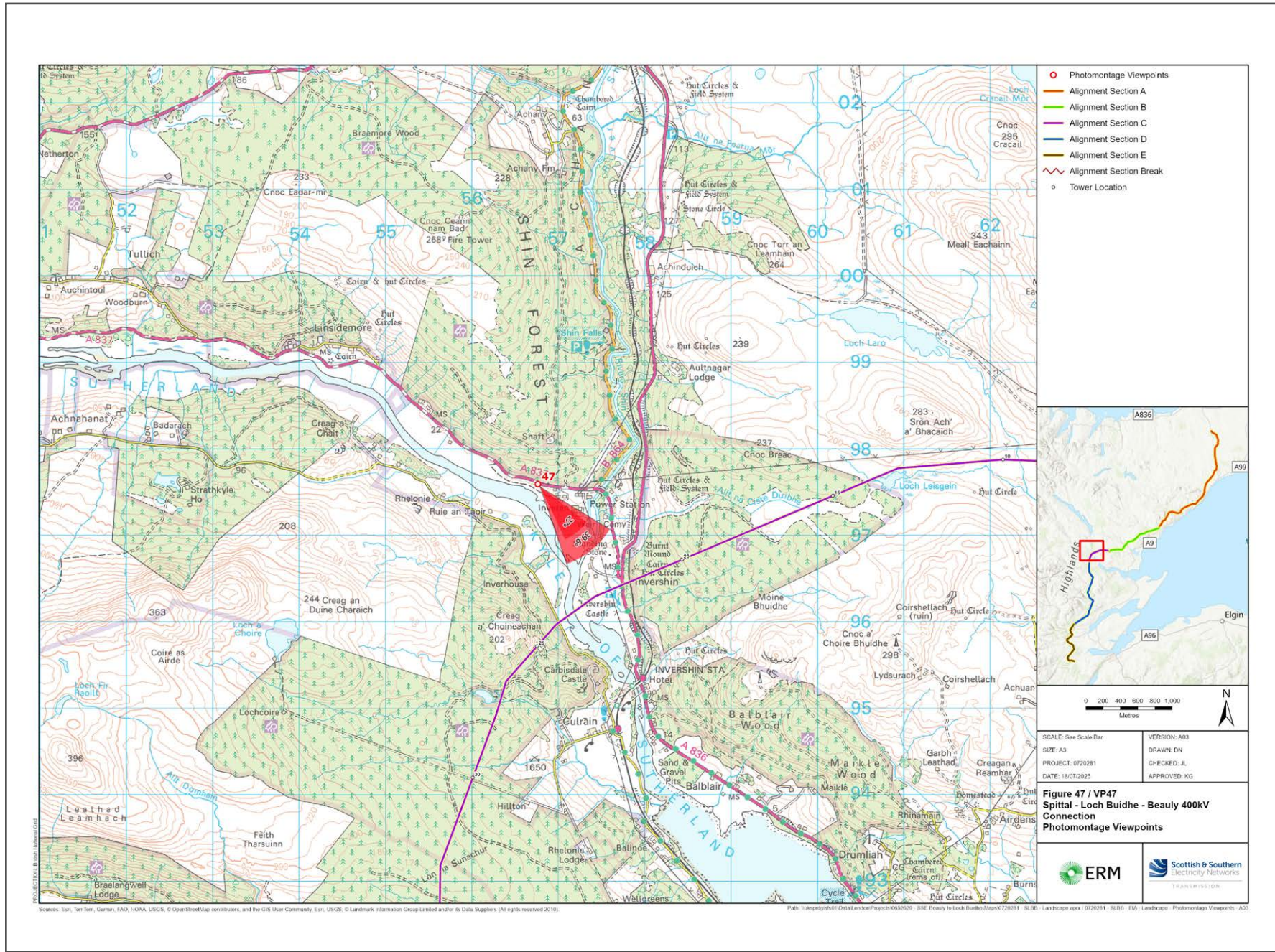


V4b Figure 7-47a Viewpoint 47: A837 (near Inveran)

Reproduced from Ordnance Survey digital map data © Crown copyright 2020. All rights reserved. Licence number 100048606



Grid Reference: 256765 897590      Distance to development : 1511m      AOD: 17m      Direction of view: 141°

This viewpoint is located on the roadside along A837.

From Invershin station, head north-west towards A836. After 160 meter turn Right onto A836. Travel for 965 meters then turn left on A837. Continue for 1931 meters until you reach your destination on the left side.

Viewpoint is located just on the side, close to the stone wall as shown in the adjacent photograph.



Extent of 50mm single frame image



**V4b Figure 7-47b Viewpoint 47: A837 (near Inveran)** Distance to development: 1511m Camera: Canon EOS R5 Focal Length: 50mm vertical (27°) x 28mm horizontal (65.5°) Camera height: 1.5m Date: 10/12/2024 12:30

The images contained on this page and the following page are not representative of scale and distance from the actual viewpoint and show the development in its wider landscape context only.

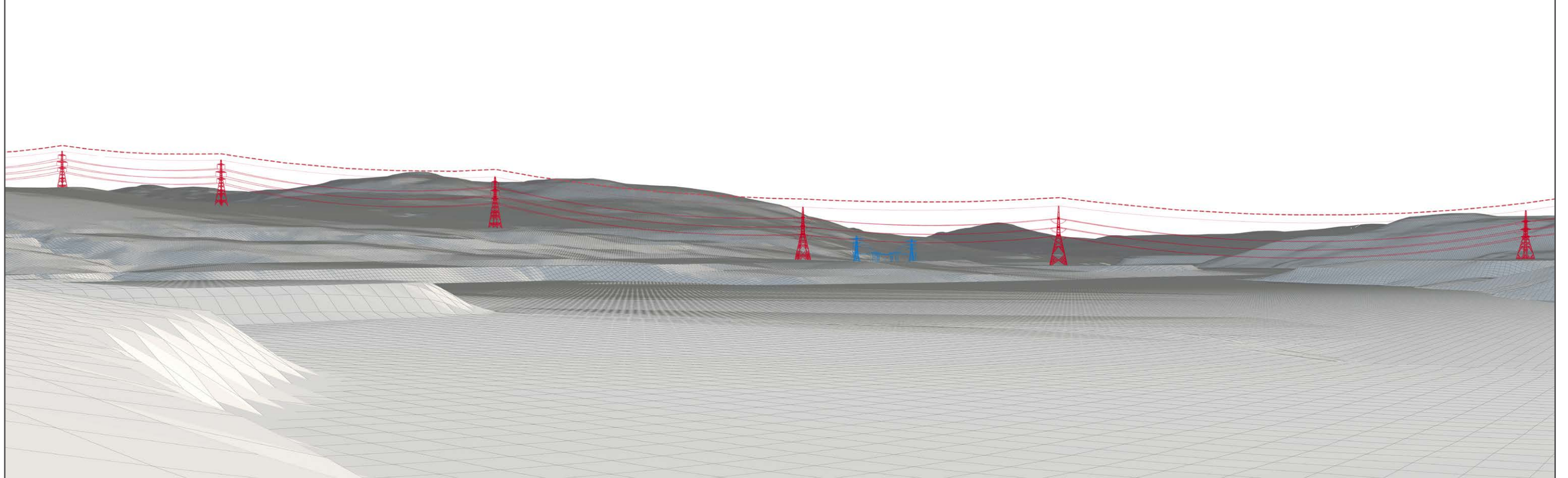
For empirical testing, the wireline image on the next page can be accurately assessed in the field when converted to a transparency. If viewed with one eye at a distance of 300mm from exactly the same location and height as the original camera lens, the image will fit the real landscape cues.





V4b Figure 7-47c Viewpoint 47: A837 (near Inveran) - Existing View

V4b Figure 7-47d Viewpoint 47: A837 (near Inveran) - Wireline Overlay



Wireline Drawing - Proposed Development Shown In Red  
 Proposed Development Special Arrangements - Permanent diversion works required to existing 132 kV and 275 kV lines to enable the construction of the Proposed Development are shown in blue  
 ----- Vertical Limit of Deviation: the maximum height of a tower above ground level





**V4b Figure 7-47b(i) Viewpoint 47: A837 (near Inveran)**

Distance to development: 1511m    Camera: Canon EOS R5    Focal Length: 50mm    Camera height: 1.5m    Date: 10/12/2024 12:30

This image should be viewed at a comfortable arms length (approx. 500mm)





**V4b Figure 7-47b(ii) Viewpoint 47: A837 (near Inveran)**

Distance to development: 1511m    Camera: Canon EOS R5    Focal Length: 75mm    Camera height: 1.5m    Date: 10/12/2024 12:30

This image should be viewed at a comfortable arms length (approx. 500mm)