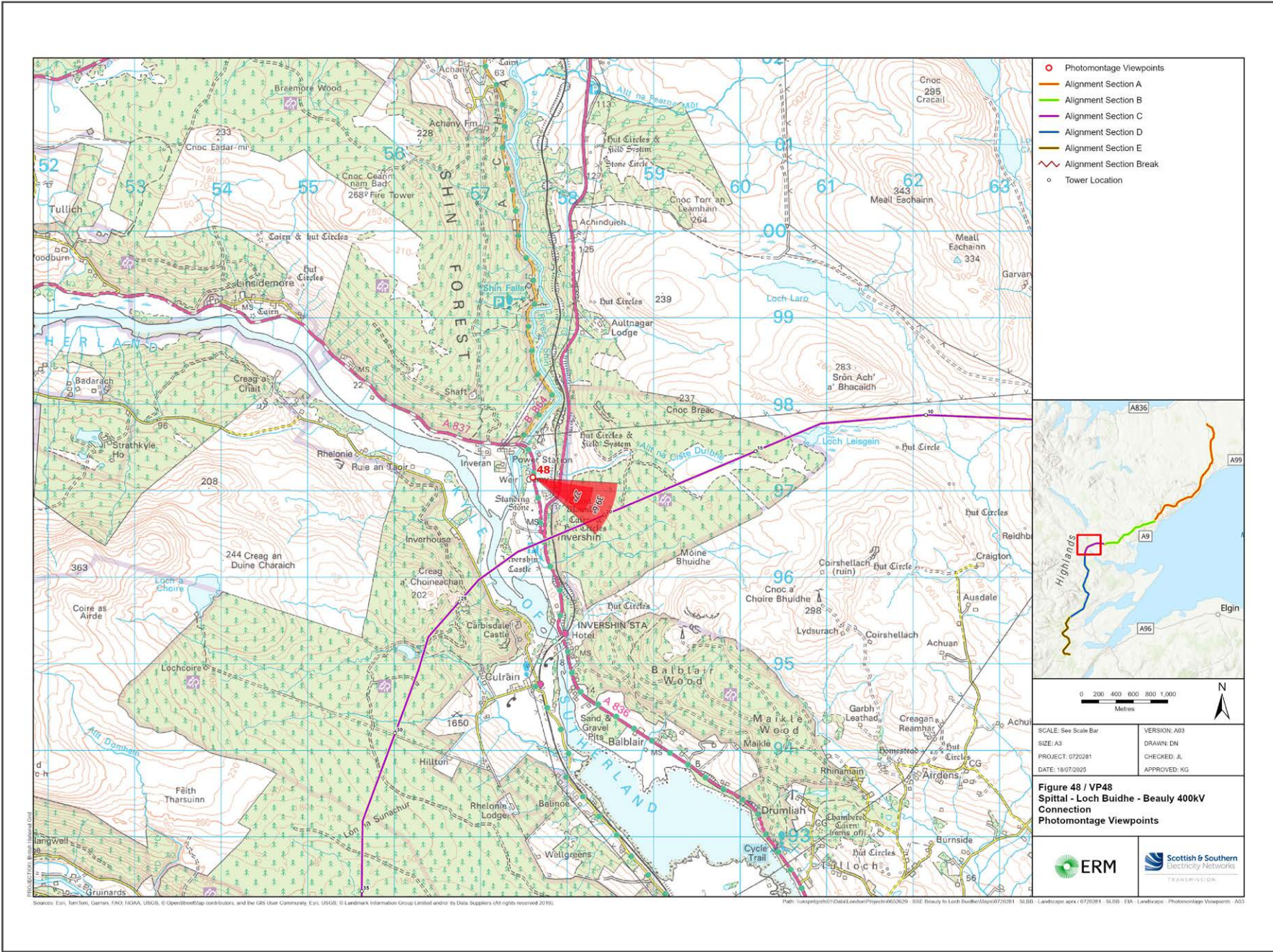


V4b Figure 7-48a Viewpoint 48: A837 Invershin Cemetery

Reproduced from Ordnance Survey digital map data © Crown copyright 2020. All rights reserved. Licence number 100048606



Grid Reference: 257604 897153      Distance to development : 985m      AOD: 19m      Direction of view: 113°

This viewpoint is located on the roadside just before Invershin Cemetery on A837.

From Invershin station, head north-west for 160 meters and then turn Right onto A836. Travel for 965 meters then turn left onto A837. Travel for 643 meters until you reach the viewpoint location as shown in the adjacent photo.



Extent of 50mm single frame image



**V4b Figure 7-48b**  
**Viewpoint 48: A837 Invershin Cemetery**

Distance to development: 985m      Camera: Canon EOS R5      Focal Length: 50mm vertical (27°) x 28mm horizontal (65.5°)      Camera height: 1.5m      Date: 10/12/2024 12:00

The images contained on this page and the following page are not representative of scale and distance from the actual viewpoint and show the development in its wider landscape context only.

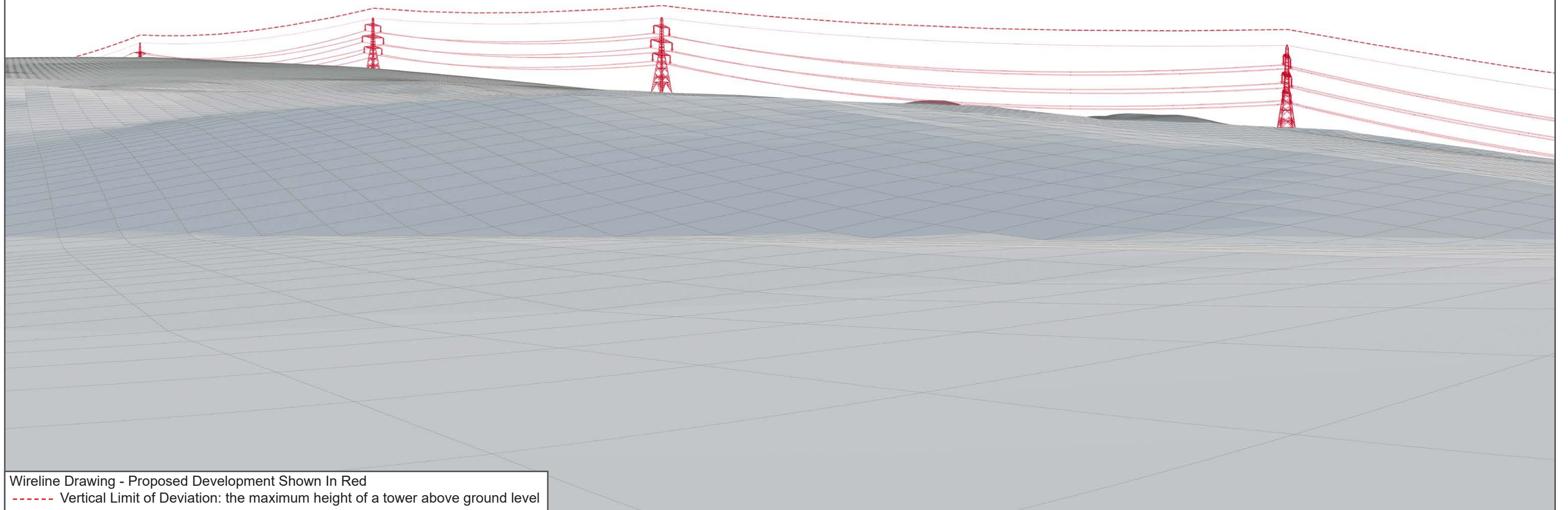
For empirical testing, the wireline image on the next page can be accurately assessed in the field when converted to a transparency. If viewed with one eye at a distance of 300mm from exactly the same location and height as the original camera lens, the image will fit the real landscape cues.





V4b Figure 7-48c Viewpoint 48: A837 Invershin Cemetery - Existing View

V4b Figure 7-48d Viewpoint 48: A837 Invershin Cemetery - Wireline Overlay

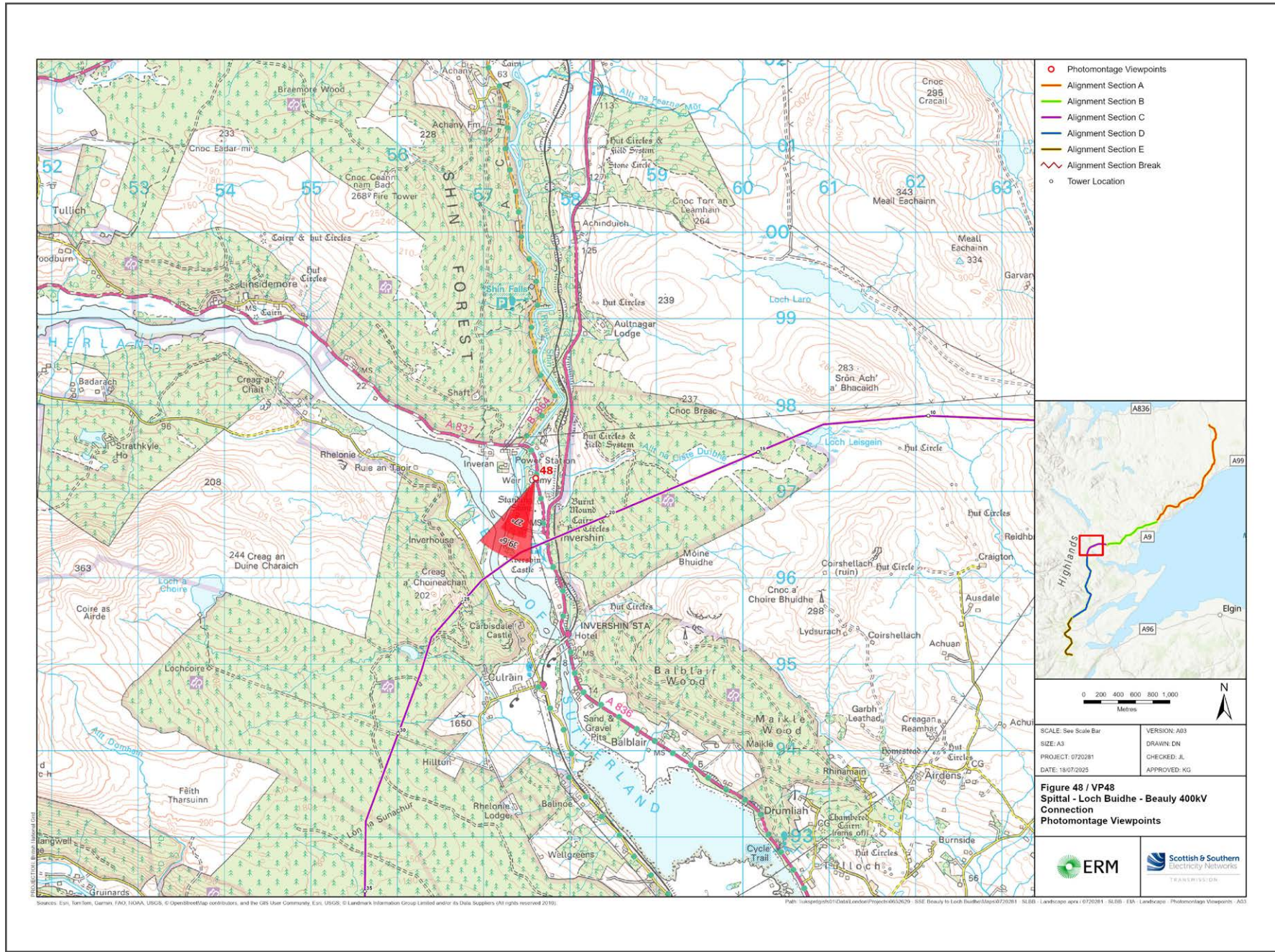


Wireline Drawing - Proposed Development Shown In Red  
 ----- Vertical Limit of Deviation: the maximum height of a tower above ground level



V4b Figure 7-48a(i) Viewpoint 48: A837 Invershin Cemetery

Reproduced from Ordnance Survey digital map data © Crown copyright 2020. All rights reserved. Licence number 100048606



Grid Reference: 257604 897153      Distance to development : 985m      AOD: 19m      Direction of view: 204°

This viewpoint is located on the roadside just before Invershin Cemetery on A837.

From Invershin station, head north-west for 160 meters and then turn Right onto A836. Travel for 965 meters then turn left onto A837. Travel for 643 meters until you reach the viewpoint location as shown in the adjacent photo.



Extent of 50mm single frame image



Photomontage

**V4b Figure 7-48b(i)**  
**Viewpoint 48: A837 Invershin Cemetery**

Distance to development: 985m      Camera: Canon EOS R5      Focal Length: 50mm vertical (27°) x 28mm horizontal (65.5°)      Camera height: 1.5m      Date: 10/12/2024 12:00

The images contained on this page and the following page are not representative of scale and distance from the actual viewpoint and show the development in its wider landscape context only.

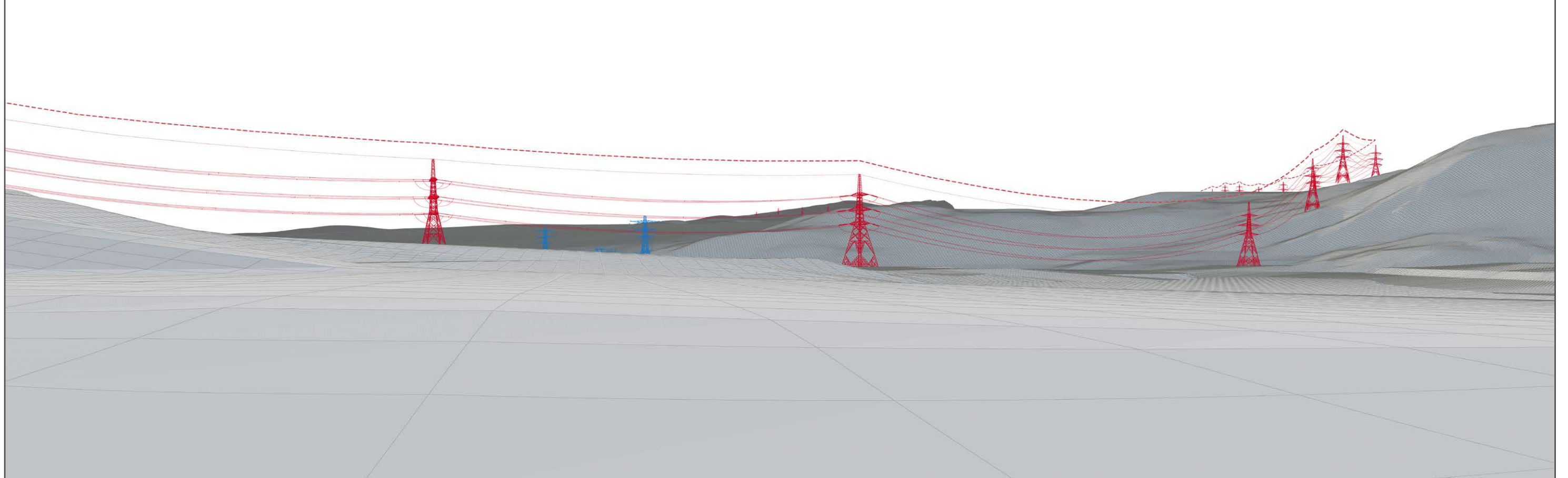
For empirical testing, the wireline image on the next page can be accurately assessed in the field when converted to a transparency. If viewed with one eye at a distance of 300mm from exactly the same location and height as the original camera lens, the image will fit the real landscape cues.





V4b Figure 7-48c(i) Viewpoint 48: A837 Invershin Cemetery - Existing View

V4b Figure 7-48d(i) Viewpoint 48: A837 Invershin Cemetery - Wireline Overlay



Wireline Drawing - Proposed Development Shown In Red  
 Proposed Development Special Arrangements - Permanent diversion works required to existing 132 kV and 275 kV lines to enable the construction of the Proposed Development are shown in blue  
 ----- Vertical Limit of Deviation: the maximum height of a tower above ground level





**V4b Figure 7-48b(ii) Viewpoint 48: A837 Invershin Cemetery**

Distance to development: 985m

Camera: Canon EOS R5

Focal Length: 50mm

Camera height: 1.5m

Date: 10/12/2024 12:00

This image should be viewed at a comfortable arms length (approx. 500mm)





**V4b Figure 7-48b(iii) Viewpoint 48: A837 Invershin Cemetery**

Distance to development: 985m

Camera: Canon EOS R5

Focal Length: 75mm

Camera height: 1.5m

Date: 10/12/2024 12:00

This image should be viewed at a comfortable arms length (approx. 500mm)