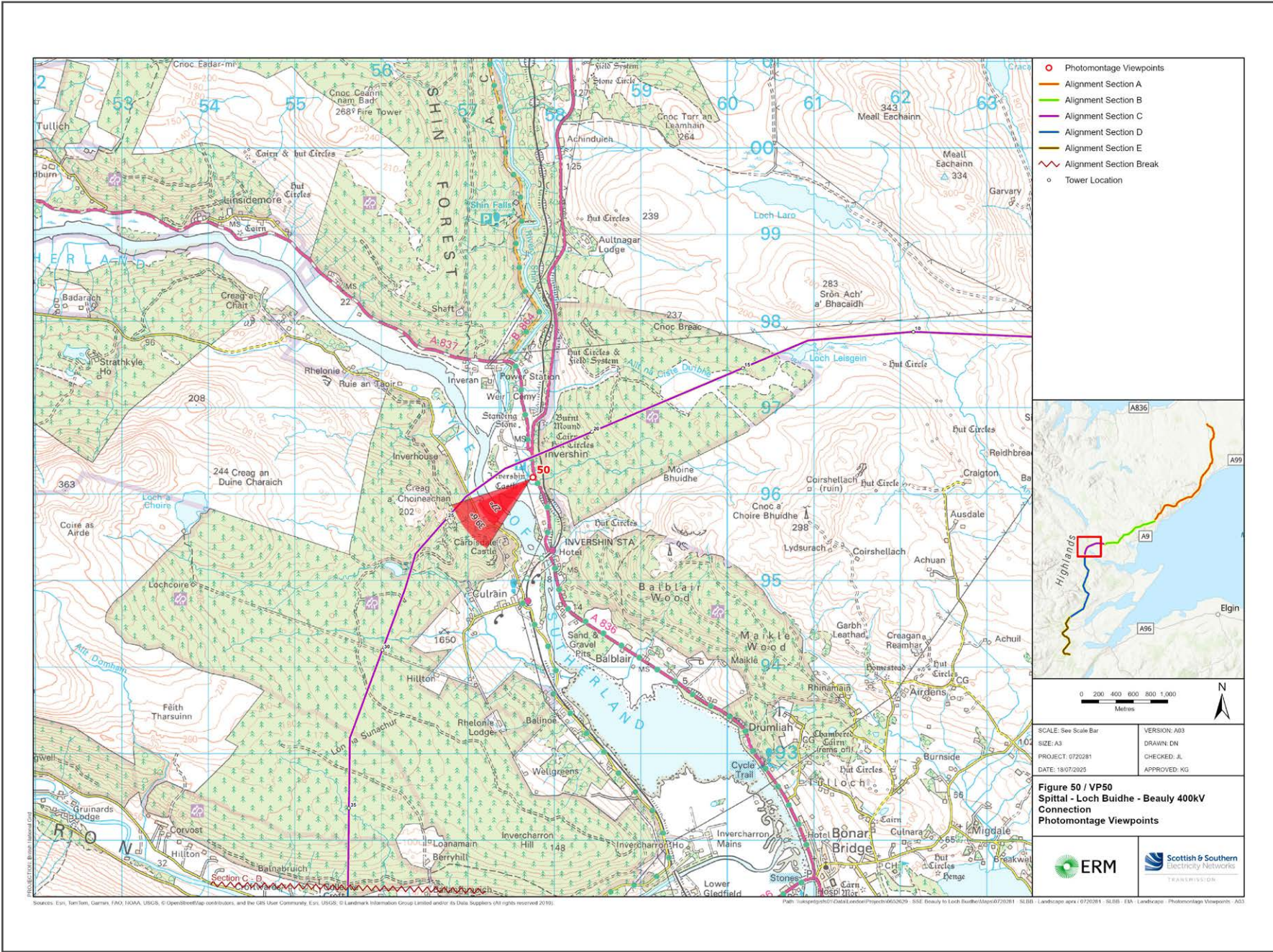


V4b Figure 7-50a Viewpoint 50: A837 Invershin

Reproduced from Ordnance Survey digital map data © Crown copyright 2020. All rights reserved. Licence number 100048606



Grid Reference: 257751 896192 Distance to development : 330m AOD: 17m Direction of view: 232°

This viewpoint is located on the roadside on A836.

From Invershin station, head north-west towards A836. After 160 meters turn right onto A836. Continue for 643 meters then turn Left.

The viewpoint will be located on the side of the road as shown in the photograph.



Extent of 50mm single frame image



V4b Figure 7-50b Viewpoint 50: A837 Invershin

Distance to development: 330m Camera: Canon EOS R5 Focal Length: 50mm vertical (27°) x 28mm horizontal (65.5°) Camera height: 1.5m Date: 09/12/2024 11:15

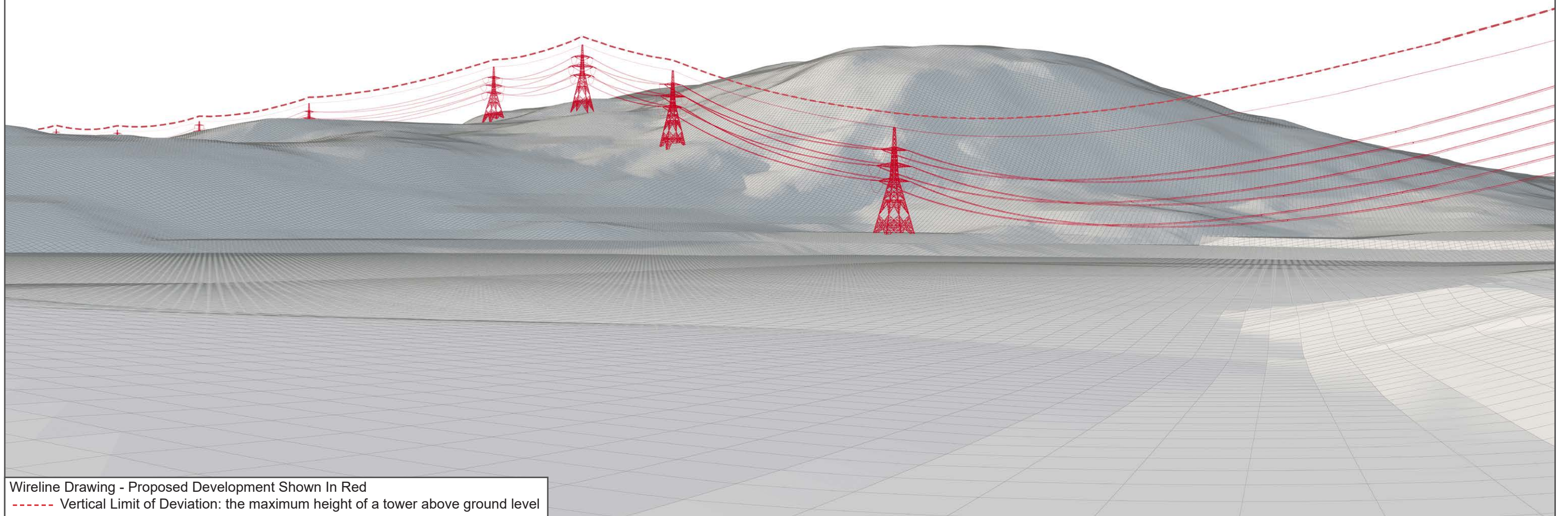
The images contained on this page and the following page are not representative of scale and distance from the actual viewpoint and show the development in its wider landscape context only.

For empirical testing, the wireline image on the next page can be accurately assessed in the field when converted to a transparency. If viewed with one eye at a distance of 300mm from exactly the same location and height as the original camera lens, the image will fit the real landscape cues.



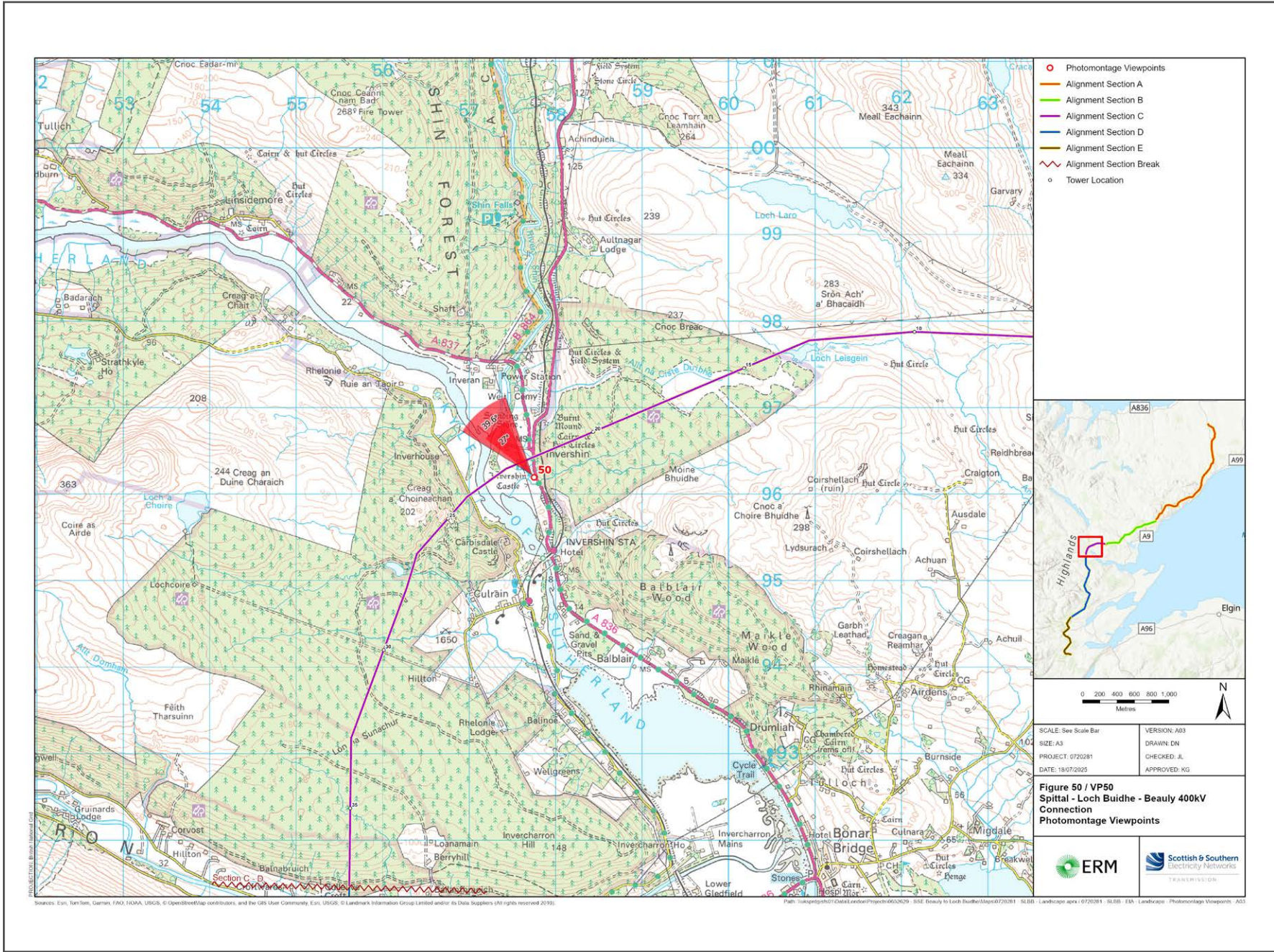
V4b Figure 7-50c Viewpoint 50: A837 Invershin - Existing View

V4b Figure 7-50d Viewpoint 50: A837 Invershin - Wireline Overlay



V4b Figure 7-50a(i) Viewpoint 50: A837 Invershin

Reproduced from Ordnance Survey digital map data © Crown copyright 2020. All rights reserved. Licence number 100048606



Grid Reference: 257751 896192 Distance to development : 330m AOD: 17m Direction of view: 322°

This viewpoint is located on the roadside on A836.

From Invershin station, head north-west towards A836. After 160 meters turn right onto A836. Continue for 643 meters then turn Left.

The viewpoint will be located on the side of the road as shown in the photograph.



Extent of 50mm single frame image



V4b Figure 7-50b(i) Viewpoint 50: A837 Invershin

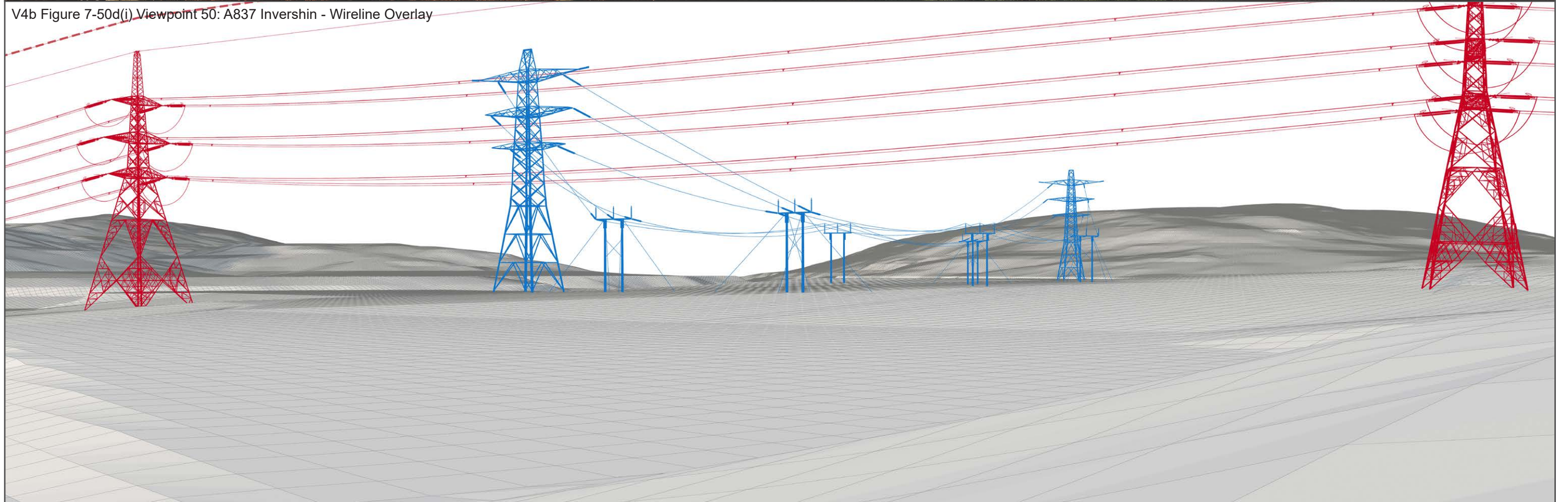
Distance to development: 330m Camera: Canon EOS R5 Focal Length: 50mm vertical (27°) x 28mm horizontal (65.5°) Camera height: 1.5m Date: 09/12/2024 11:15

The images contained on this page and the following page are not representative of scale and distance from the actual viewpoint and show the development in its wider landscape context only.

For empirical testing, the wireline image on the next page can be accurately assessed in the field when converted to a transparency. If viewed with one eye at a distance of 300mm from exactly the same location and height as the original camera lens, the image will fit the real landscape cues.



V4b Figure 7-50c(i) Viewpoint 50: A837 Invershin - Existing View



V4b Figure 7-50d(i) Viewpoint 50: A837 Invershin - Wireline Overlay

Wireline Drawing - Proposed Development Shown In Red
 Proposed Development Special Arrangements - Permanent diversion works required to existing 132 kV and 275 kV lines to enable the construction of the Proposed Development are shown in blue
 ----- Vertical Limit of Deviation: the maximum height of a tower above ground level



V4b Figure 7-50b(ii) Viewpoint 50: A837 Invershin

Distance to development: 330m

Camera: Canon EOS R5

Focal Length: 50mm

Camera height: 1.5m

Date: 09/12/2024 11:15

This image should be viewed at a comfortable arms length (approx. 500mm)



V4b Figure 7-50b(iii) Viewpoint 50: A837 Invershin

Distance to development: 330m

Camera: Canon EOS R5

Focal Length: 75mm

Camera height: 1.5m

Date: 09/12/2024 11:15

This image should be viewed at a comfortable arms length (approx. 500mm)